



# Weekly Weather Update

2:30 PM CDT  
Thursday, July 8, 2021

*Andrew Tingler, NWS Lake Charles*



NWSLakeCharles

[www.weather.gov/LakeCharles](http://www.weather.gov/LakeCharles)



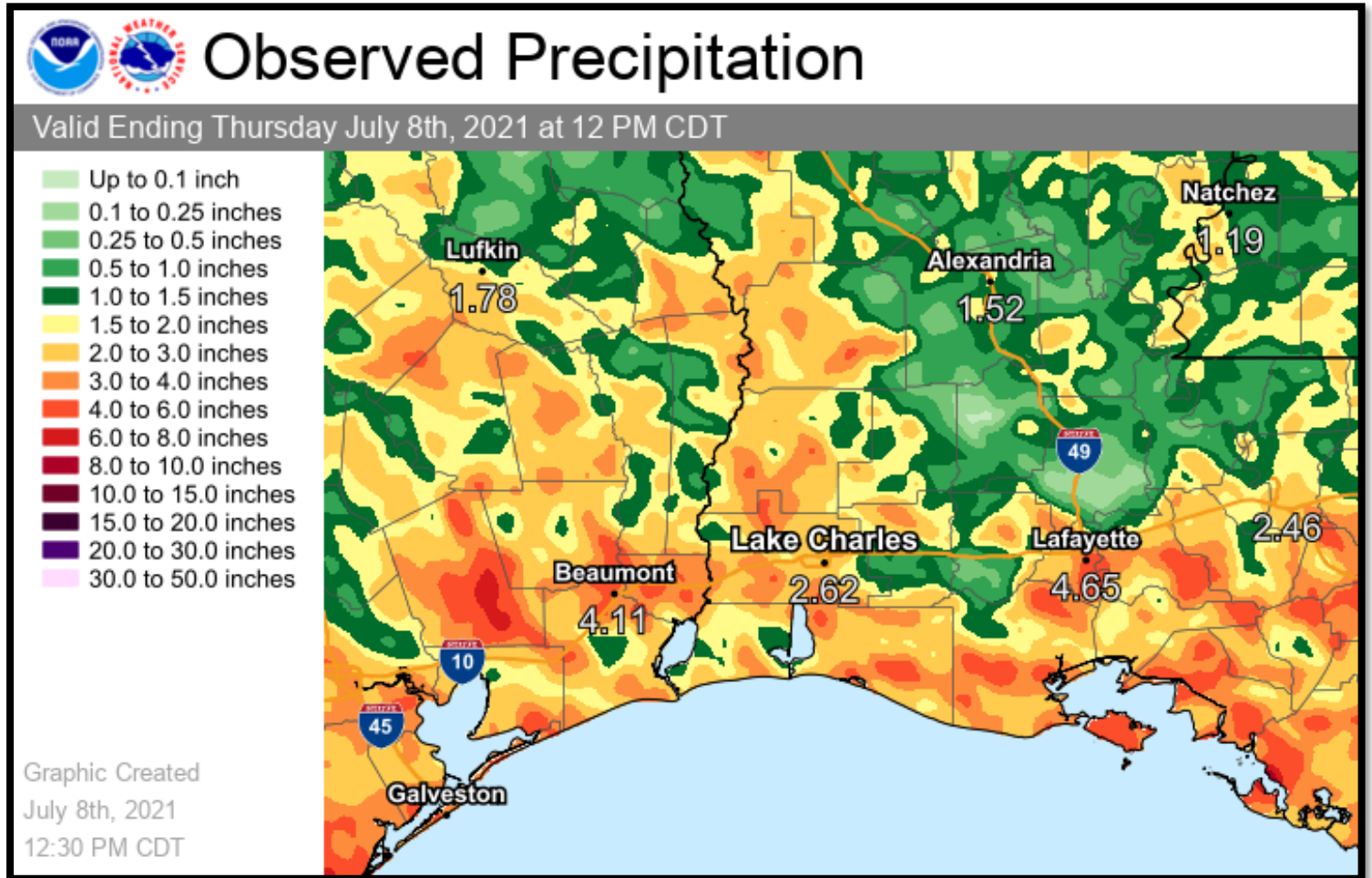
## TOP STORY:

**Stormy pattern to continue with only a slight decrease in rain chances through the middle of next week.**

	Low Temperatures	High Temperatures	Chance For Rain
Thursday	71-75 F	85-89 F	60-75%
Friday	72-76 F	87-88 F	40-45%
Saturday	73-77 F	89-92 F	50-65%
Sunday	73-77 F	90-92 F	45-55%
Monday	73-76 F	91-93 F	40-50%
Tuesday	71-76 F	90-93 F	45-50%
Wednesday	71-76 F	90-93 F	40-45%
Normals This Time of Year	70-74 F	90-93 F	35%-50%



It has been slightly drier in Central Louisiana, but everyone has seen some rain over the past week.



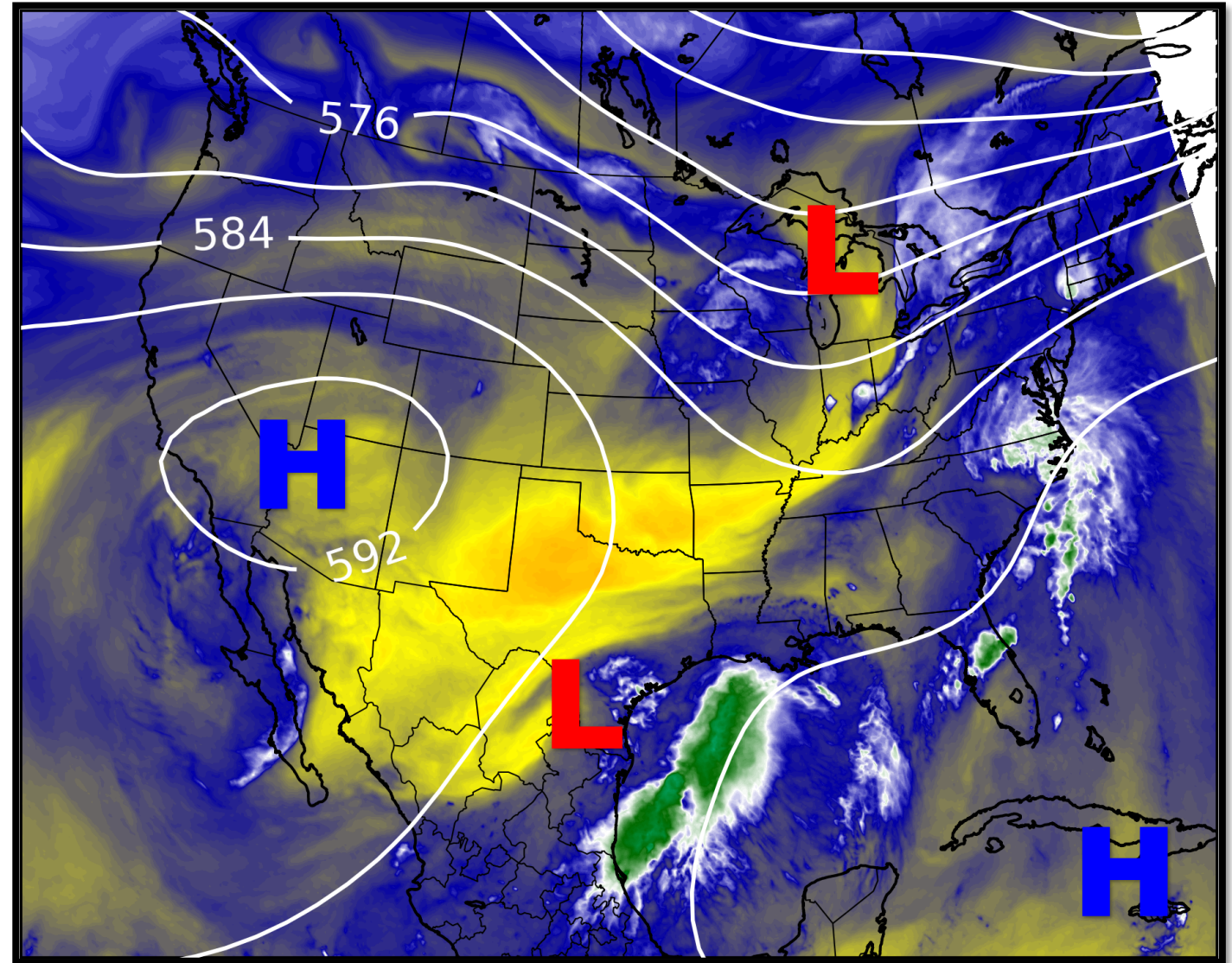


# Upper Level Steering Patterns



Lake Charles  
WEATHER FORECAST OFFICE

An upper low is over South Texas which is keeping rain chances high locally. A trough is over the central sections of the country while a ridge is over the west.

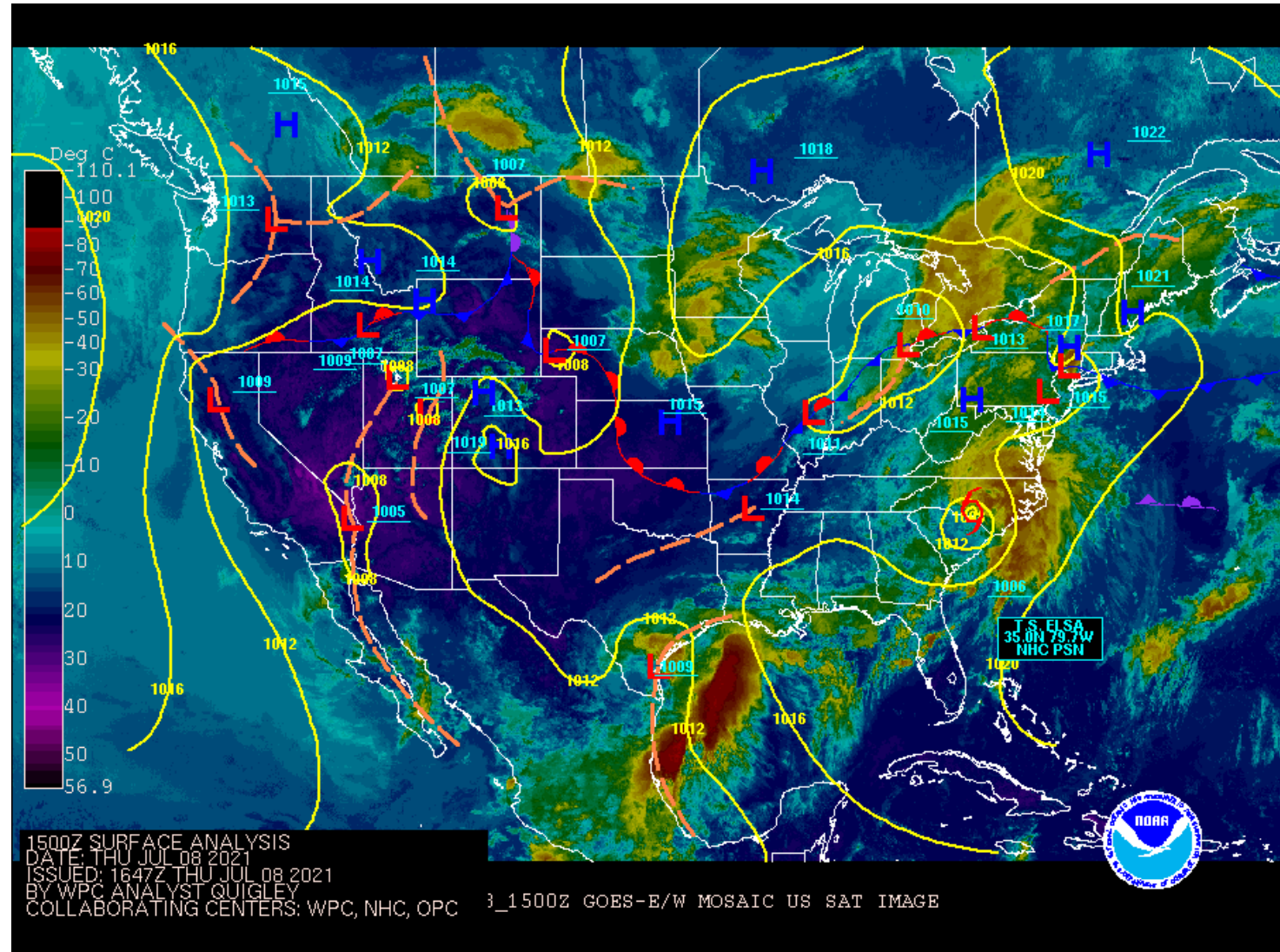


# Surface Weather Map with Fronts



Lake Charles  
WEATHER FORECAST OFFICE

Low pressure is along the northwest gulf coast. Tropical Storm Elsa is over the Carolinas. Hot and dry weather is over the west states while the eastern states remain in a stormy pattern.

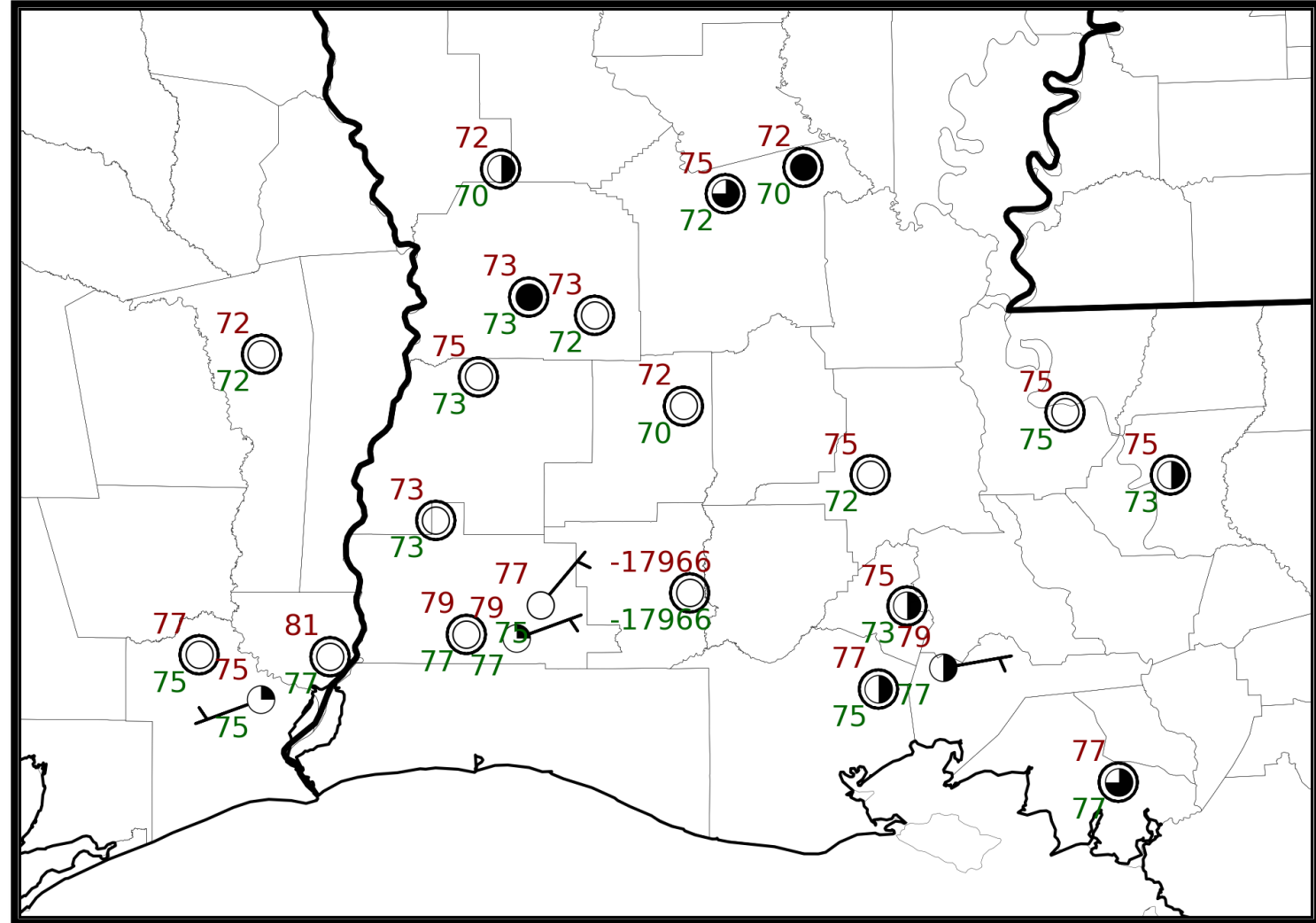


# 6 am Weather Observations



Lake Charles  
WEATHER FORECAST OFFICE

Light winds with temperatures generally in the 70s occurred this morning.

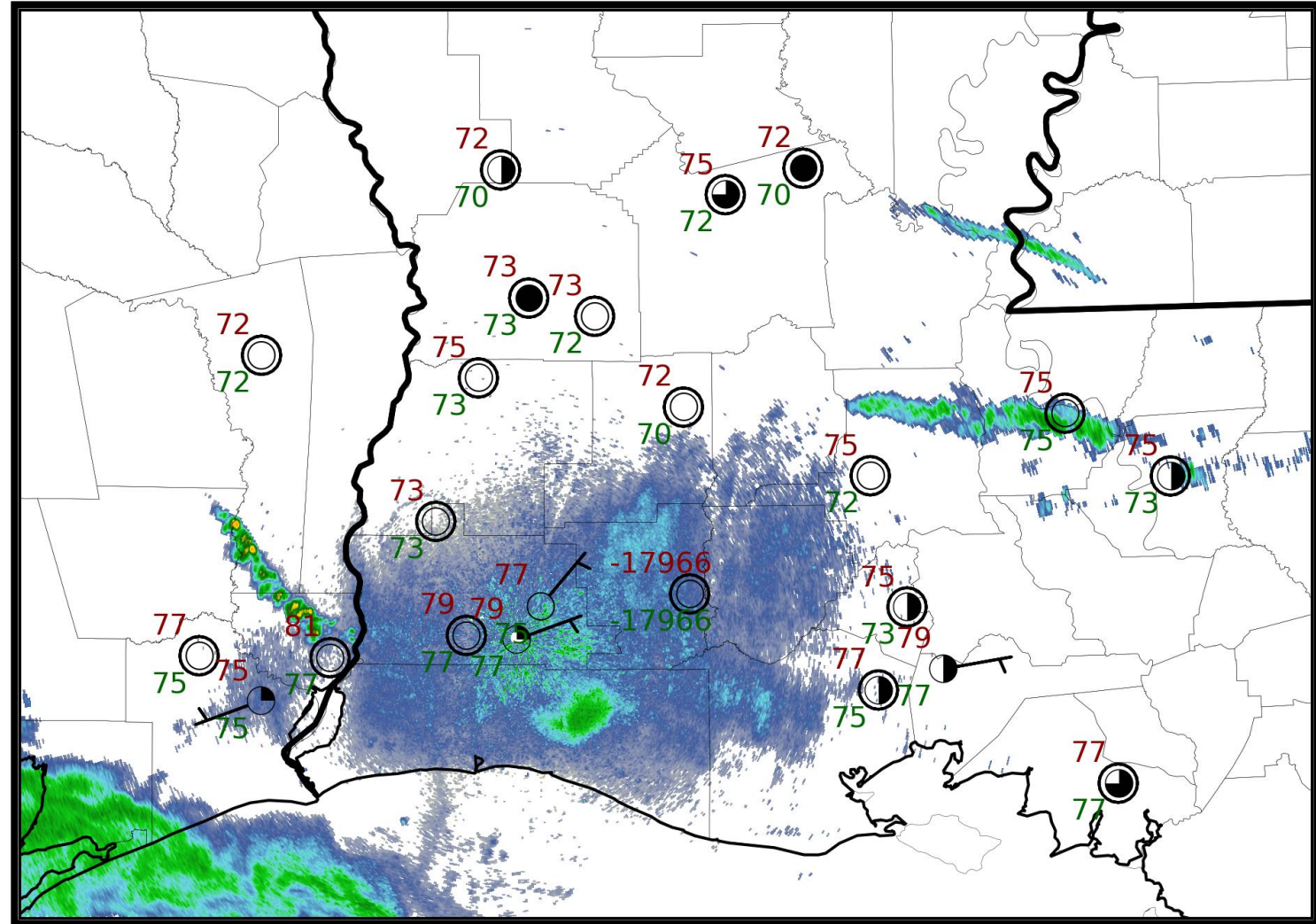


# 6 am Weather Observations



Lake Charles  
WEATHER FORECAST OFFICE

A few showers were already developing this morning with a larger shield of rain off the coast.



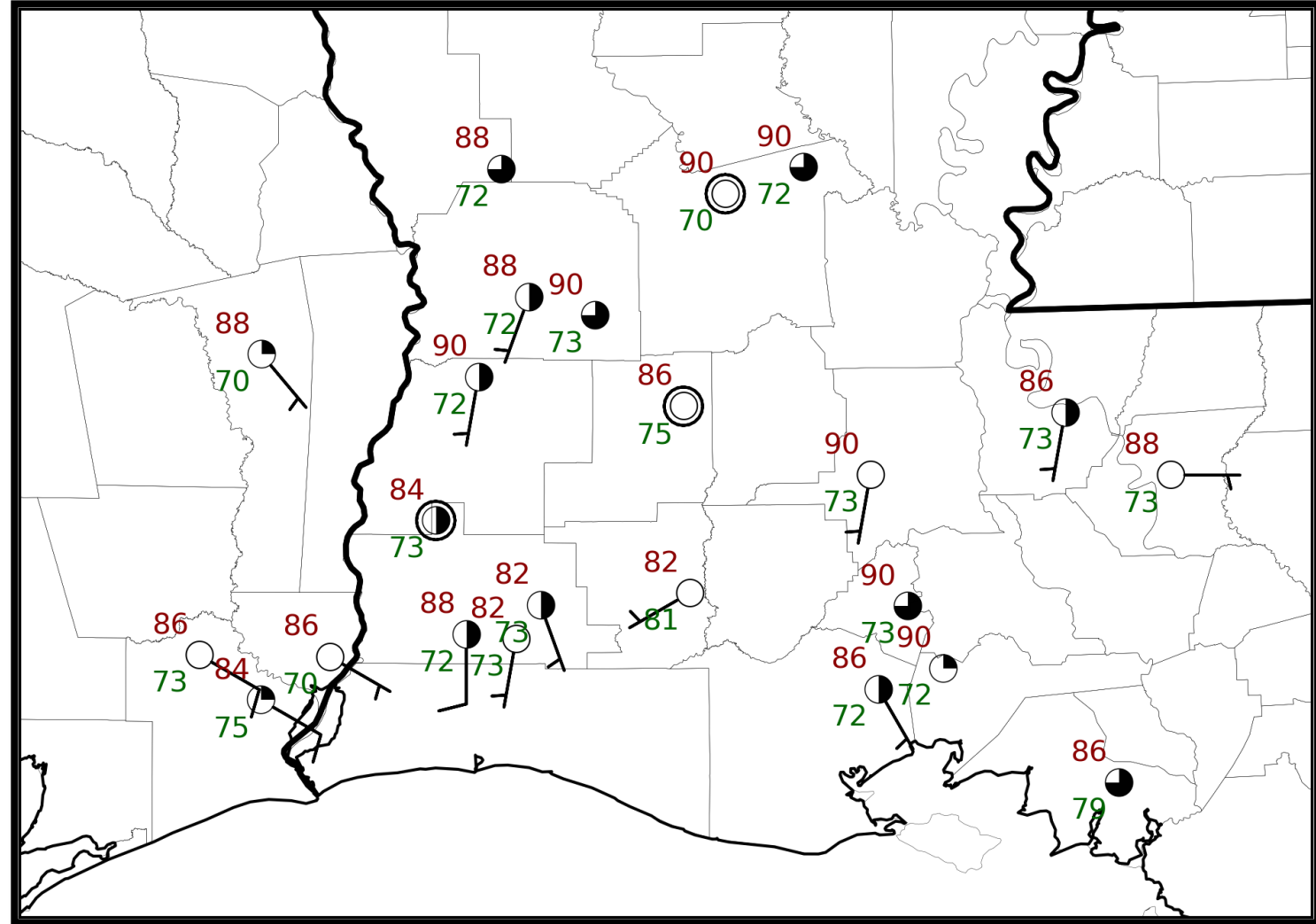


# 2 pm Weather Observations



Lake Charles  
WEATHER FORECAST OFFICE

Temperatures were suppressed at some sites by overcast conditions and isolated showers, however temperatures ranged from the low 80s to around 90.

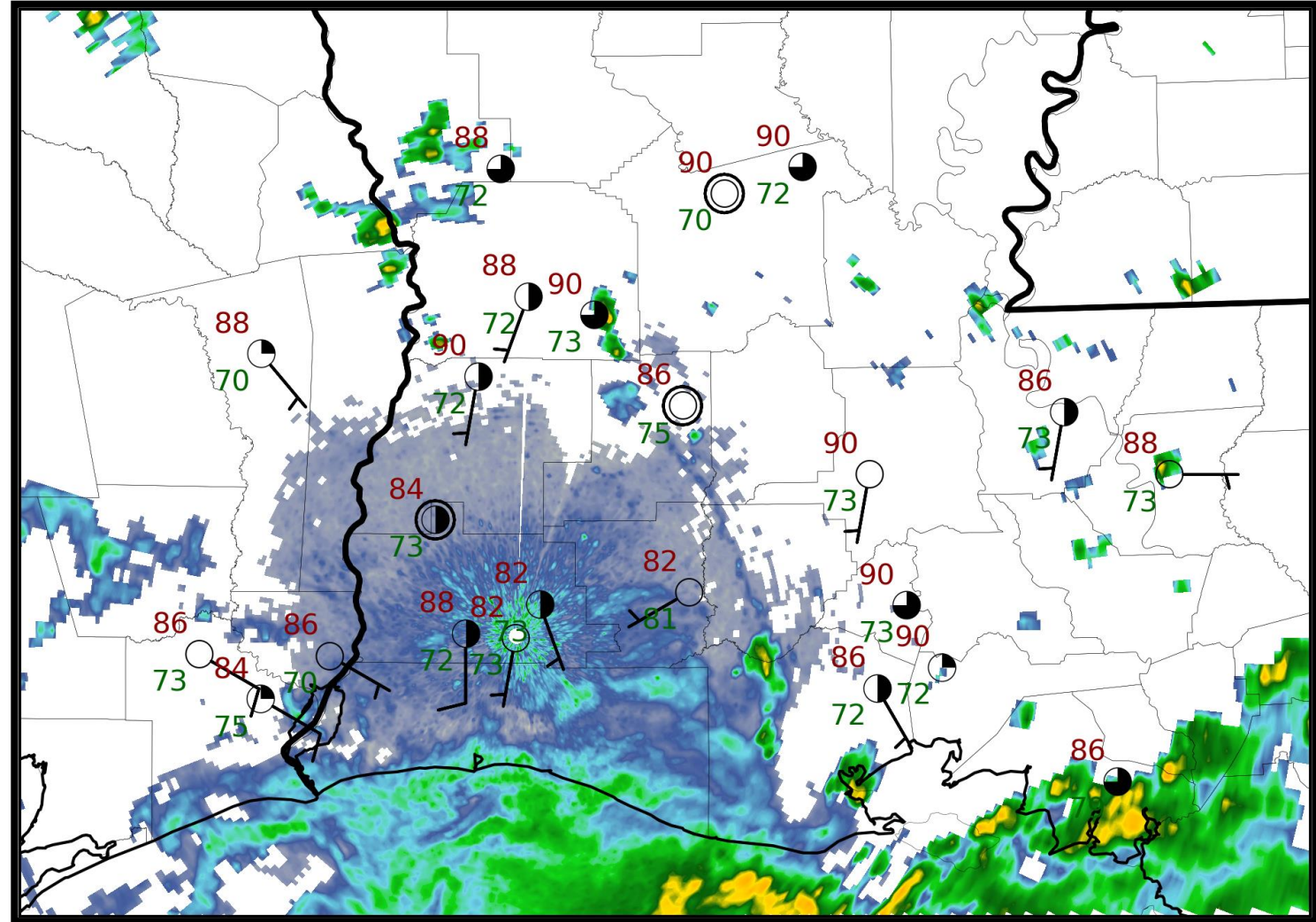


# 2 pm Weather Observations

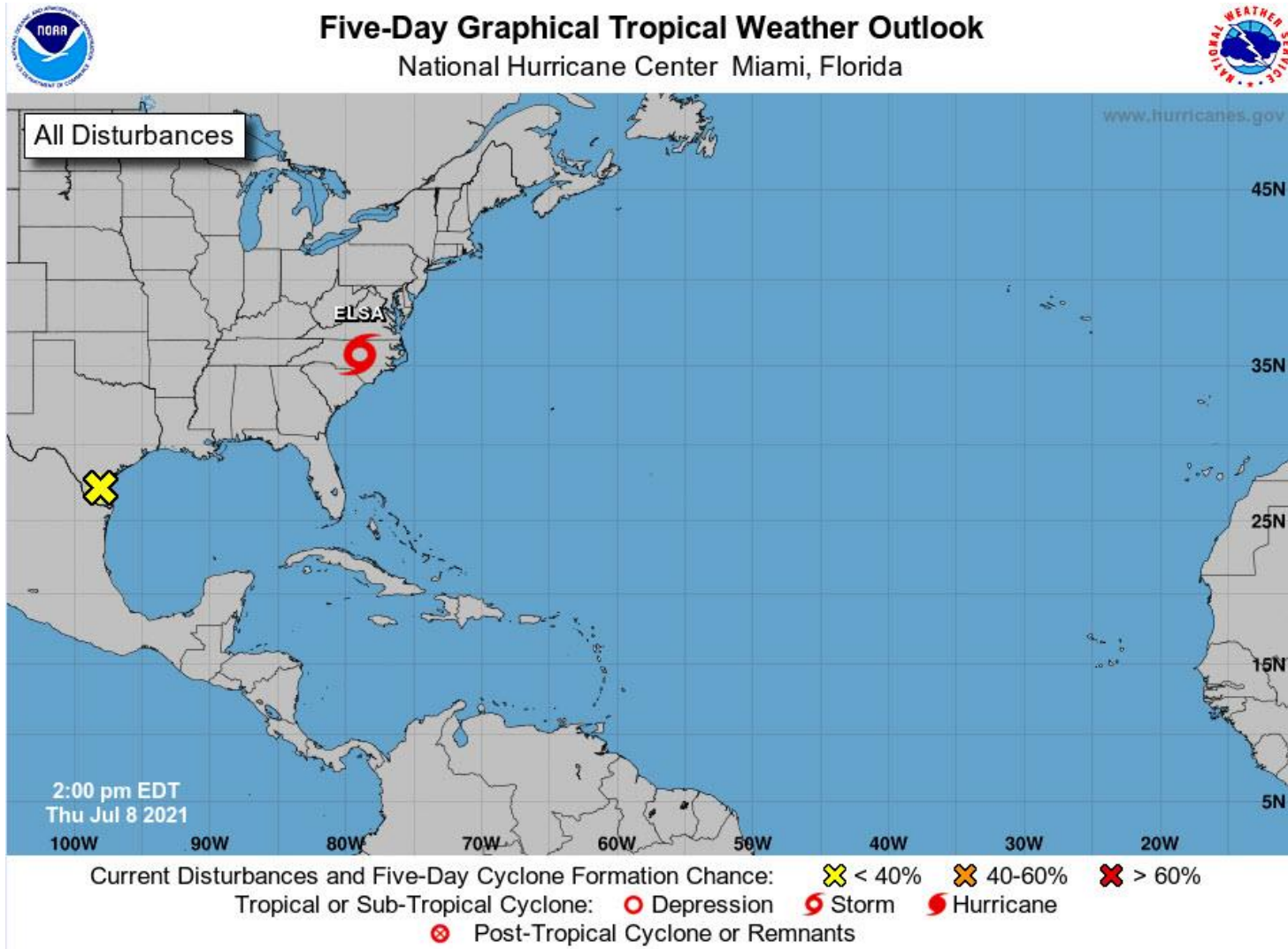


Lake Charles  
WEATHER FORECAST OFFICE

A large area of rain with embedded thunderstorms is moving in from the Gulf of Mexico. Additional isolated showers and storms continue inland.



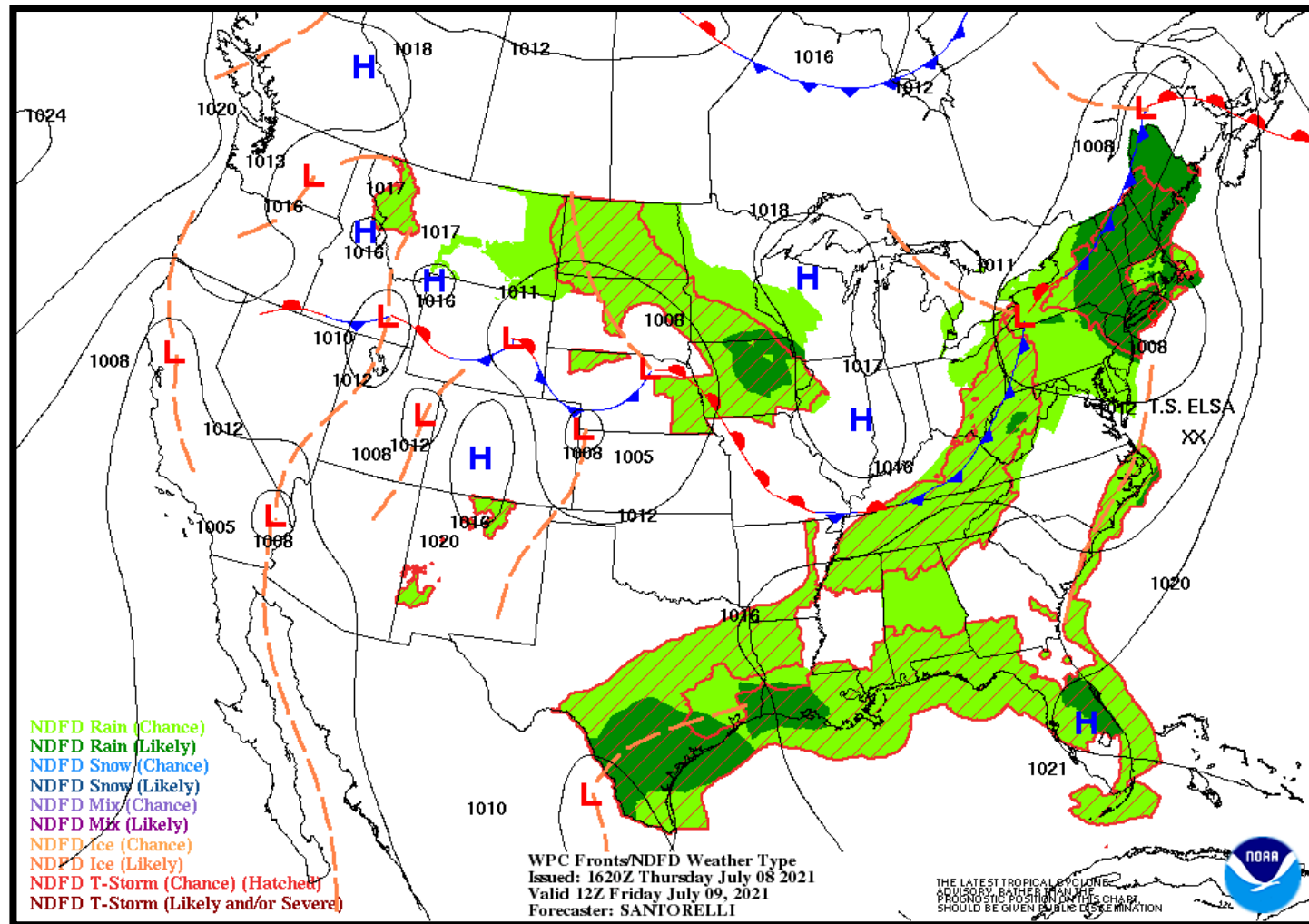
A weak area of low pressure is near Brownsville, TX, but no development is expected. Elsa continues northeast across the Carolinas. No other area is being monitored.





### NWS LCH REGIONAL WEATHER

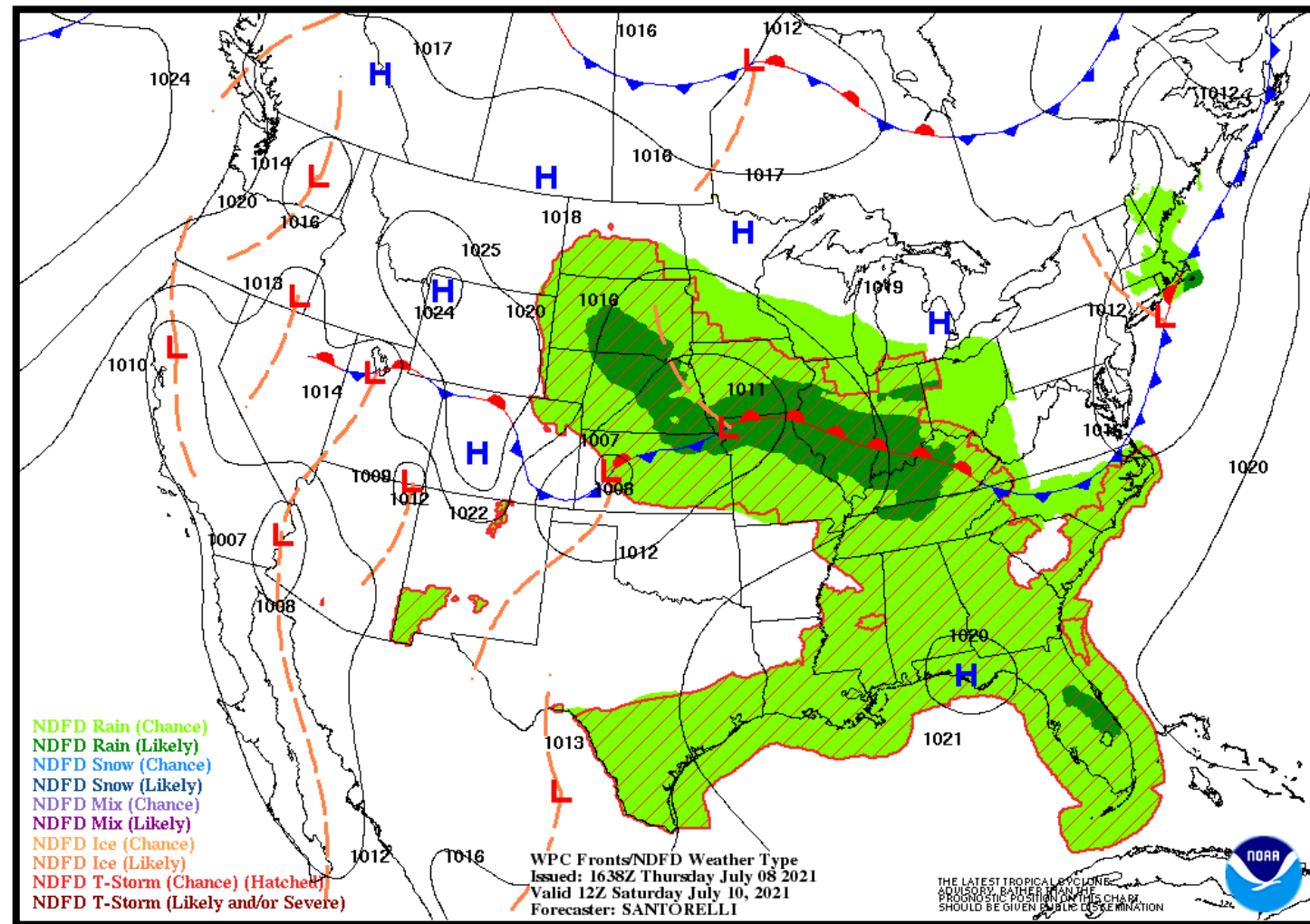
Low Temperature	71-75 F
High Temperature	85-89 F
Wind	SSE 5 mph
Rain Chances	60-75%
Weather Hazards	Thunderstorms





### NWS LCH REGIONAL WEATHER

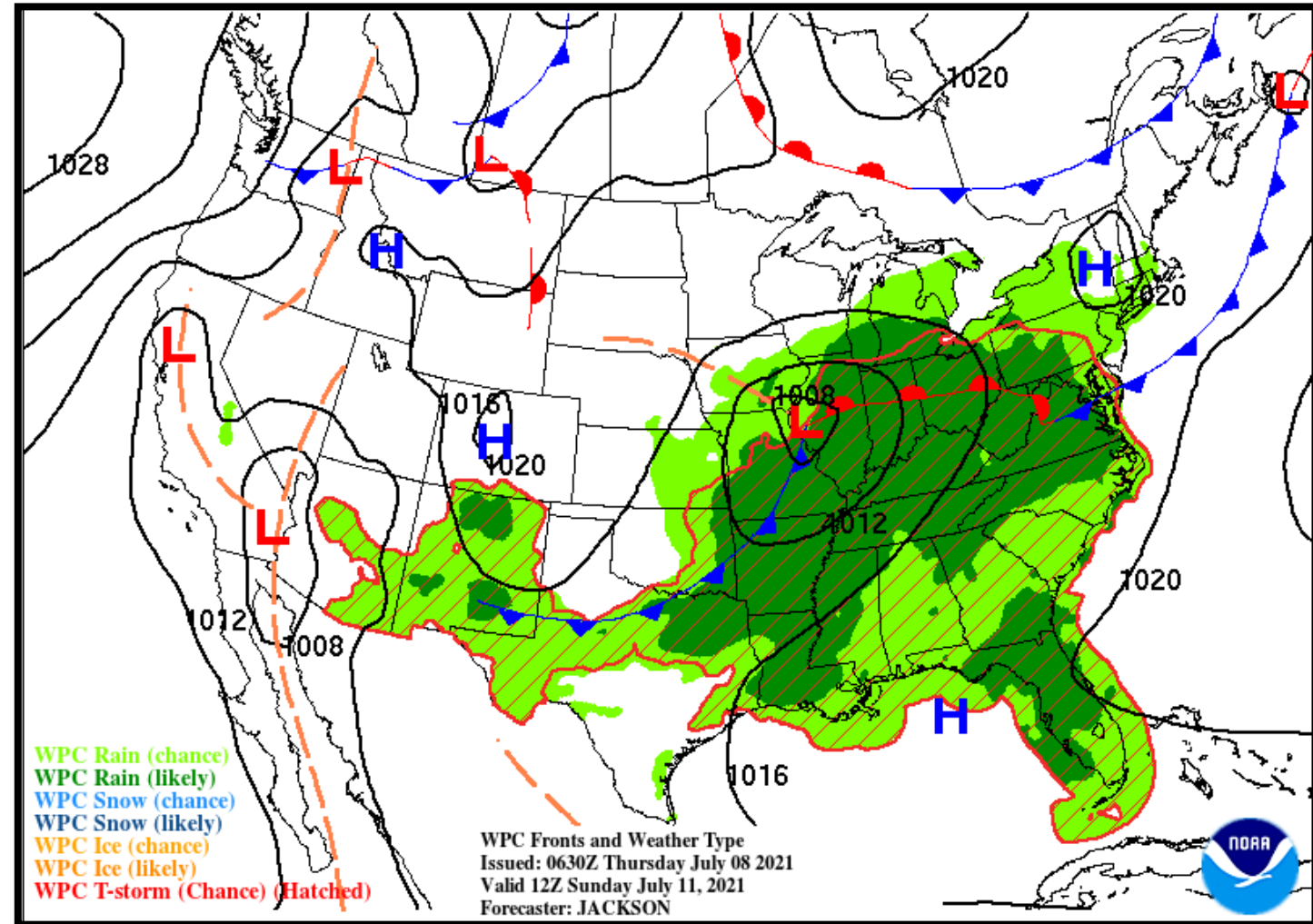
Low Temperature	72-76 F
High Temperature	87-88 F
Wind	SSE 5 mph
Rain Chances	40-45%
Weather Hazards	Thunderstorms





### NWS LCH REGIONAL WEATHER

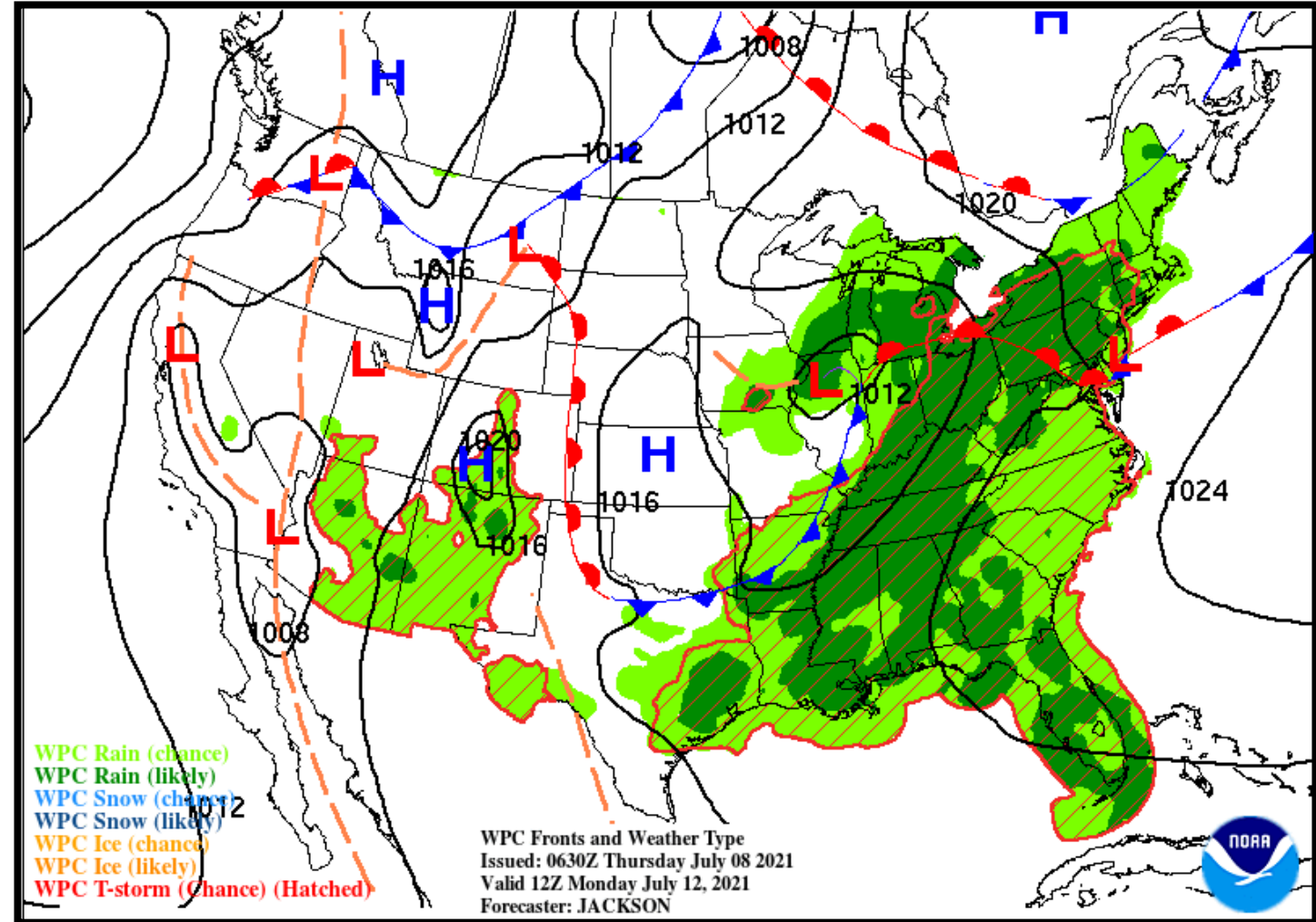
Low Temperature	73-77 F
High Temperature	89-92 F
Wind	S 5-10 mph
Rain Chances	50-65%
Weather Hazards	Thunderstorms





### NWS LCH REGIONAL WEATHER

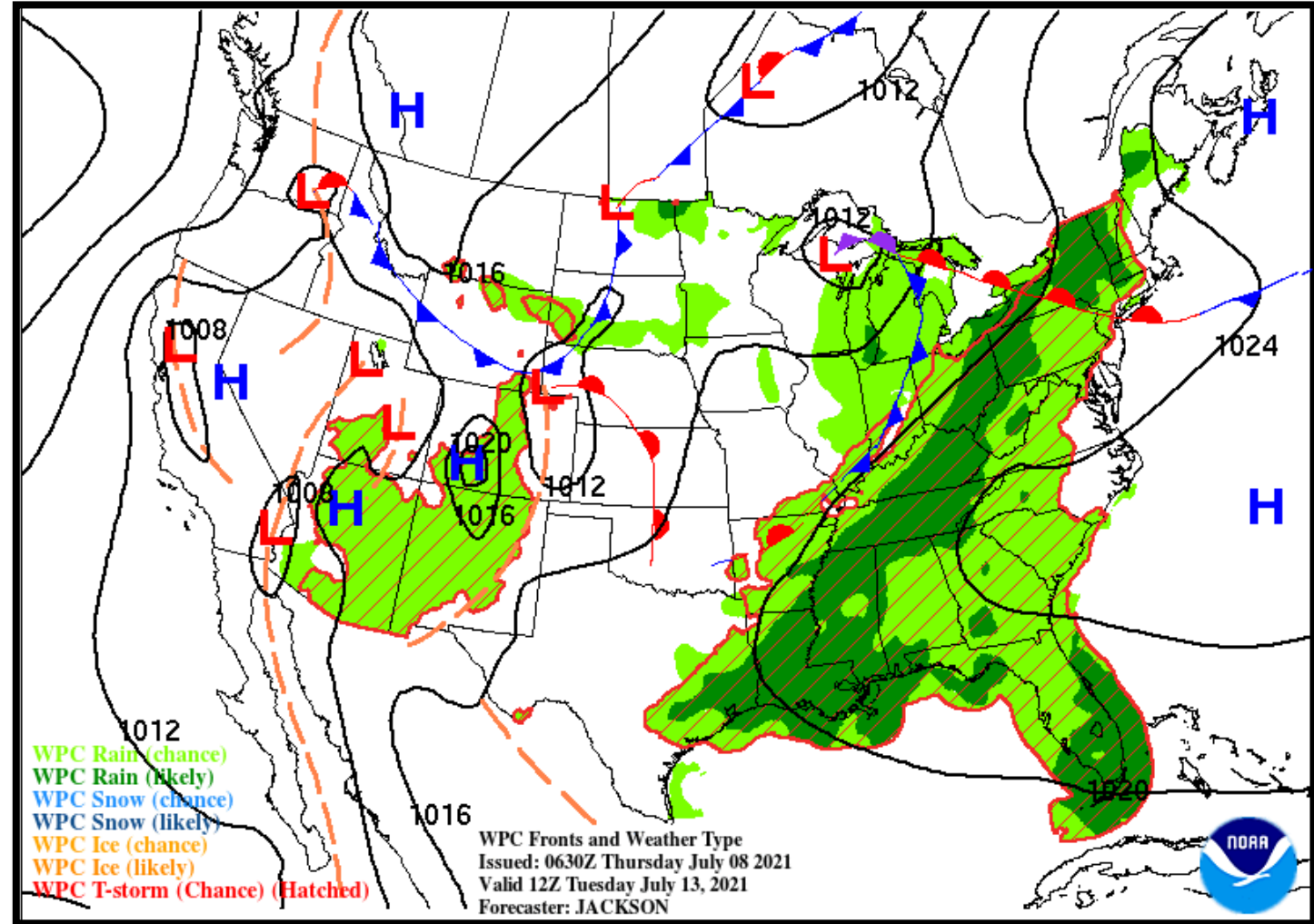
Low Temperature	73-77 F
High Temperature	90-92 F
Wind	S 5 mph
Rain Chances	45-55%
Weather Hazards	Thunderstorms





### NWS LCH REGIONAL WEATHER

Low Temperature	73-76 F
High Temperature	91-93 F
Wind	S 5 mph
Rain Chances	40-50%
Weather Hazards	Thunderstorms

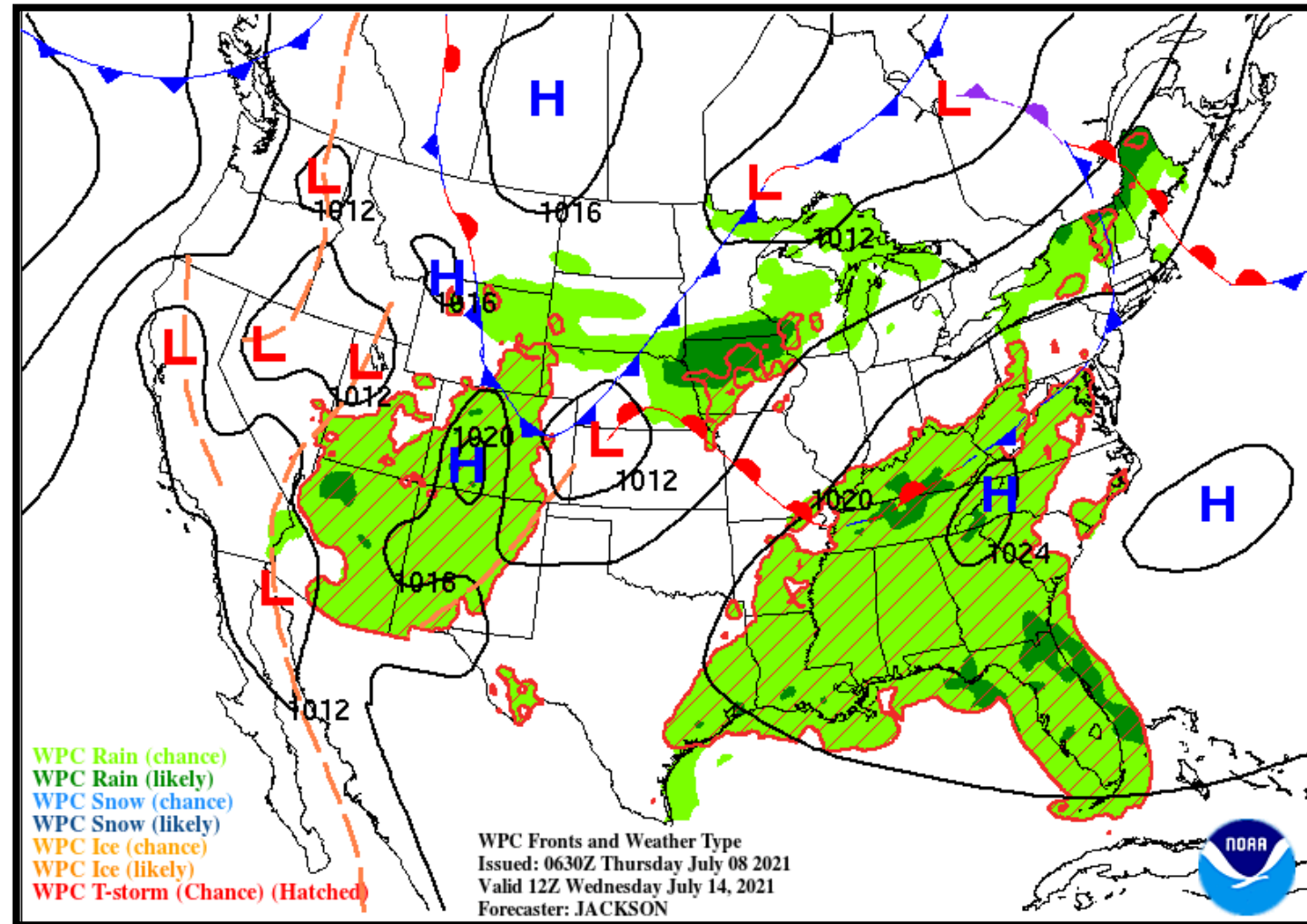






### NWS LCH REGIONAL WEATHER

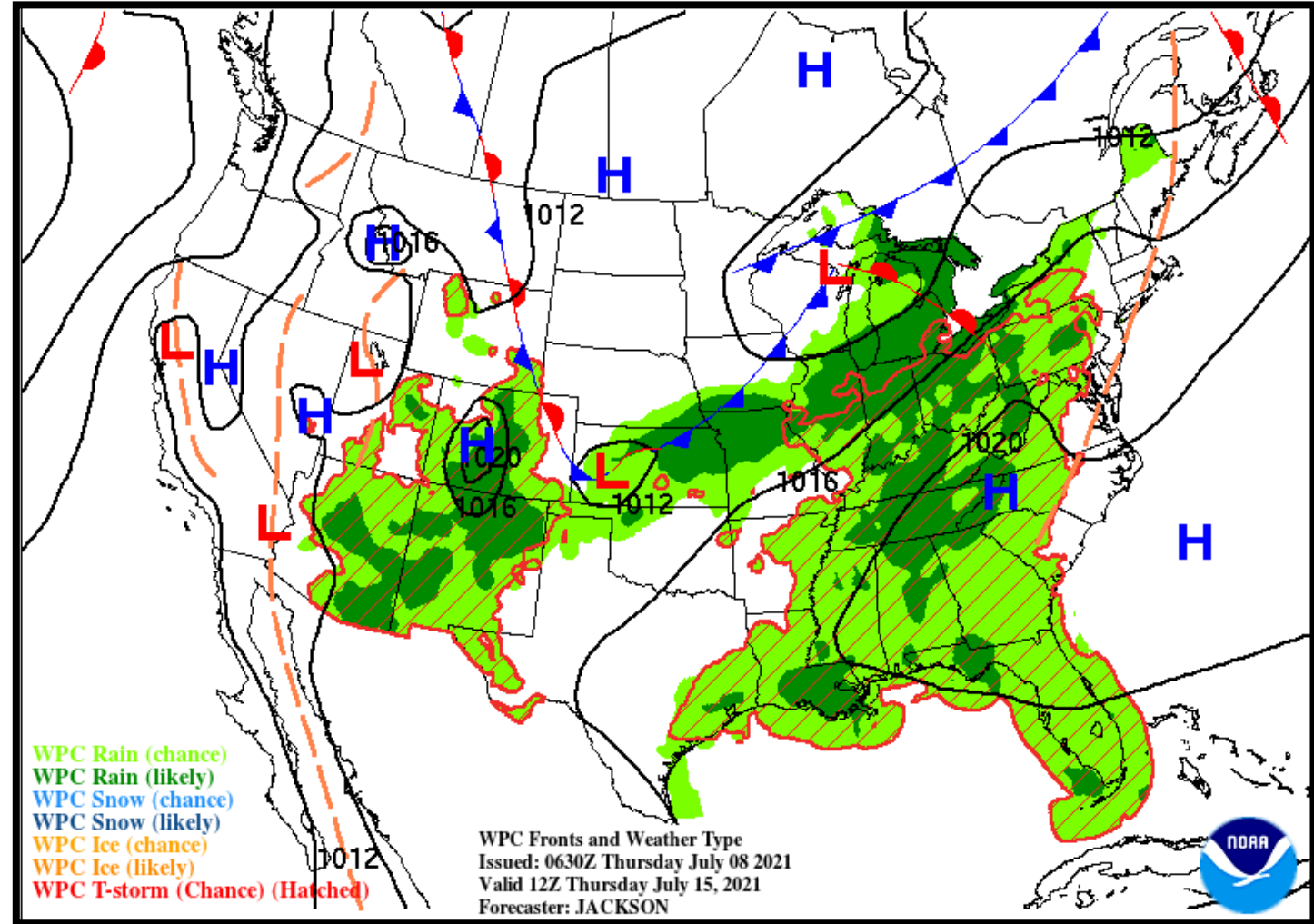
Low Temperature	71-76 F
High Temperature	90-93 F
Wind	SSE 5 mph
Rain Chances	45-50%
Weather Hazards	Thunderstorms





### NWS LCH REGIONAL WEATHER

Low Temperature	71-76 F
High Temperature	90-93 F
Wind	SSE 5 mph
Rain Chances	40-45%
Weather Hazards	Thunderstorms



# Weekly Weather Summary Table



Lake Charles  
WEATHER FORECAST OFFICE

Color Codes Except for Temperatures	Weather	Thursday 07/08/21	Friday 07/09/21	Saturday 07/10/21	Sunday 07/11/21	Monday 07/12/21	Tuesday 07/13/21	Wednesday 07/14/21
Yellow = Low Threat	Rain Total	1.0-2.0"	0.10-0.25"	0.10-0.25"	0.50-1.0"	0.25-0.50"	0.10-0.25"	<0.10"
Orange = Moderate Threat	F-Storm/Lightning	scattered	scattered	scattered	scattered	scattered	scattered	scattered
Red = High Threat	Hurricane/Hail/Dmg Wind	None	None	None	None	None	None	None
Color Codes For Temperatures	Wind	SSE 5 mph	SSE 5 mph	S 5-10 mph	S 5 mph	S 5 mph	SSE 5 mph	SSE 5 mph
Yellow=5 F above normal	Tides	Above Normal	Above Normal	Above Normal	Above Normal	Above Normal	Above Normal	Above Normal
Orange=10 F above normal	Wave Height	Near: 1-4 ft Off: 4-5 ft	Near: 1-4 ft Off: 4-5 ft	Near: 1-4 ft Off: 4-5 ft	Near: 1-3 ft Off: 4-5 ft	Near: 1-3 ft Off: 3-4 ft	Near: 1-3 ft Off: 3-4 ft	Near: 1-3 ft Off: 3-4 ft
Red=15 F above normal	Temperature	Low: 71-75 F	Low: 72-76 F	Low: 73-77 F	Low: 73-77 F	Low: 73-76 F	Low: 71-76 F	Low: 71-76 F
Vry Lt Blue=5 F below normal	High: 85-89 F	High: 87-88 F	High: 89-92 F	High: 90-92 F	High: 91-93 F	High: 90-93 F	High: 90-93 F	High: 90-93 F
Lt Blue=10 F below normal								
Blue=15 F below normal								



- Wet weather to continue into next week
- A slight decrease in rain chances can be expected by the middle of next week
- No severe weather is anticipated, however localized flooding may be possible.

