



Weekly Weather Update

2:30 PM CDT
Thursday, October 21, 2021

Montra Lockwood, NWS Lake Charles



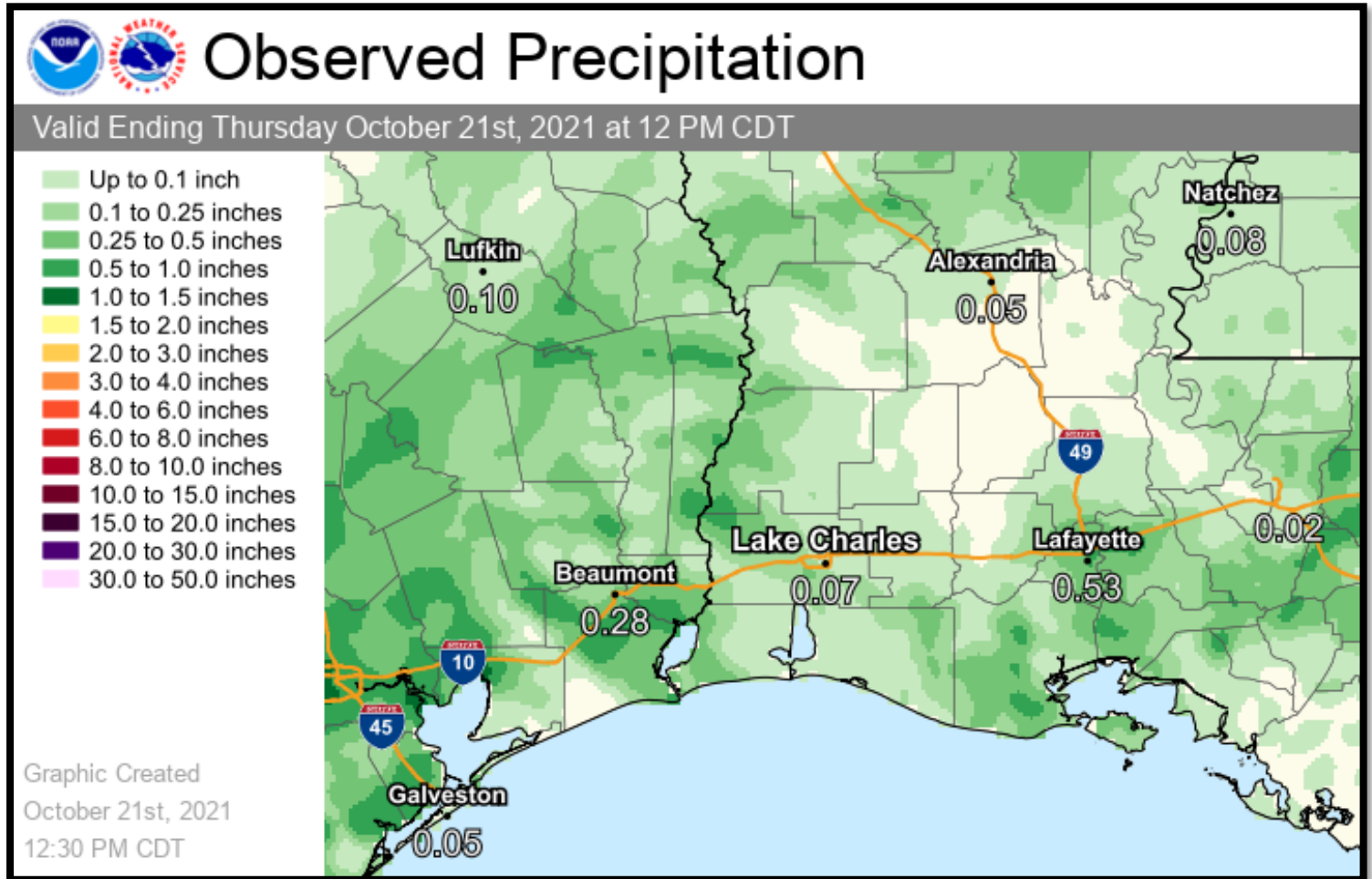


TOP STORY:

Above normal temperatures expected, despite a series of weak fronts affecting the area.

	Low Temperatures	High Temperatures	Chance For Rain
Friday	58-68 F	84-87 F	10%
Saturday	60-67 F	83-86 F	10-25%
Sunday	63-69 F	83-87 F	30-50%
Monday	67-72 F	86-89 F	20-30%
Tuesday	65-70 F	85-89 F	10-15%
Wednesday	68-72 F	79-84 F	40-50%
Thursday	56-62 F	76-79 F	10-20%
Normals This Time of Year	50-57 F	75-77 F	20%-30%

Last week's front brought some light rain to the area, with spotty amounts of one quarter to one half inch.

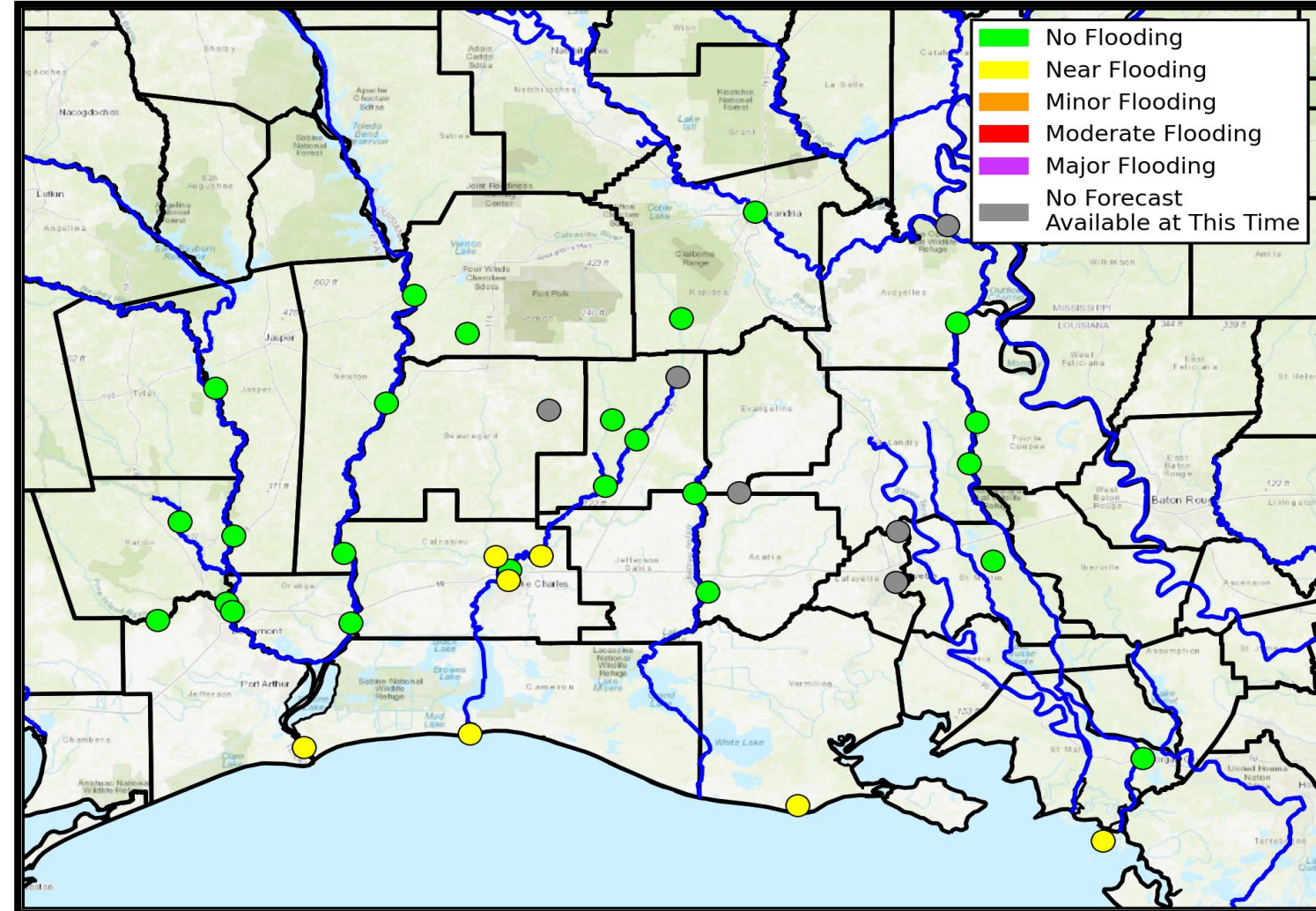


River Forecasts



Lake Charles
WEATHER FORECAST OFFICE

No rivers are in flood currently, but tidal fluctuations will keep water levels elevated during times of high tide along the lower Calcasieu River, and along the coast.

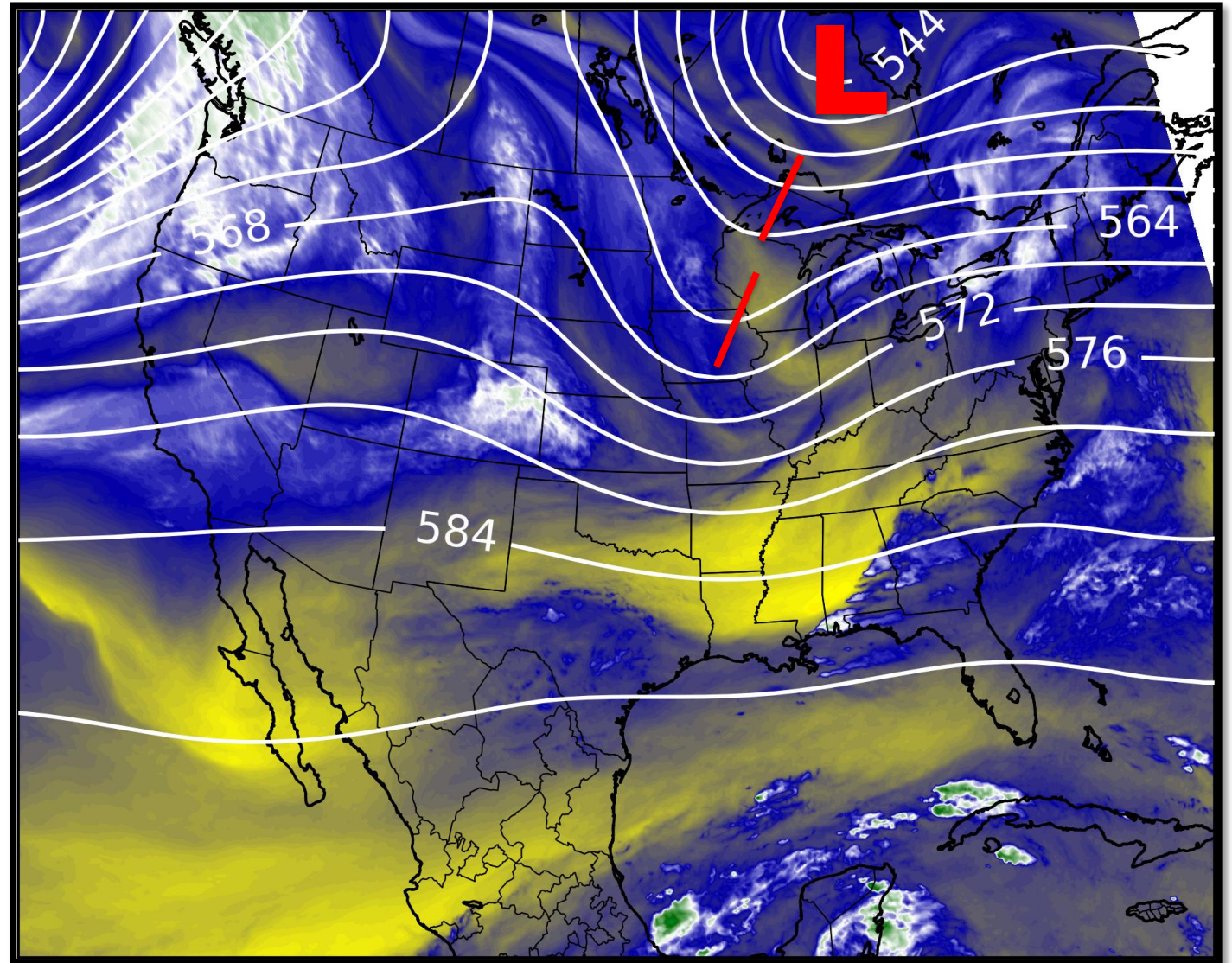


Upper Level Steering Patterns



Lake Charles
WEATHER FORECAST OFFICE

The pattern over the region is relatively flat (or zonal), with a low pressure trough further north over the western Great Lakes.

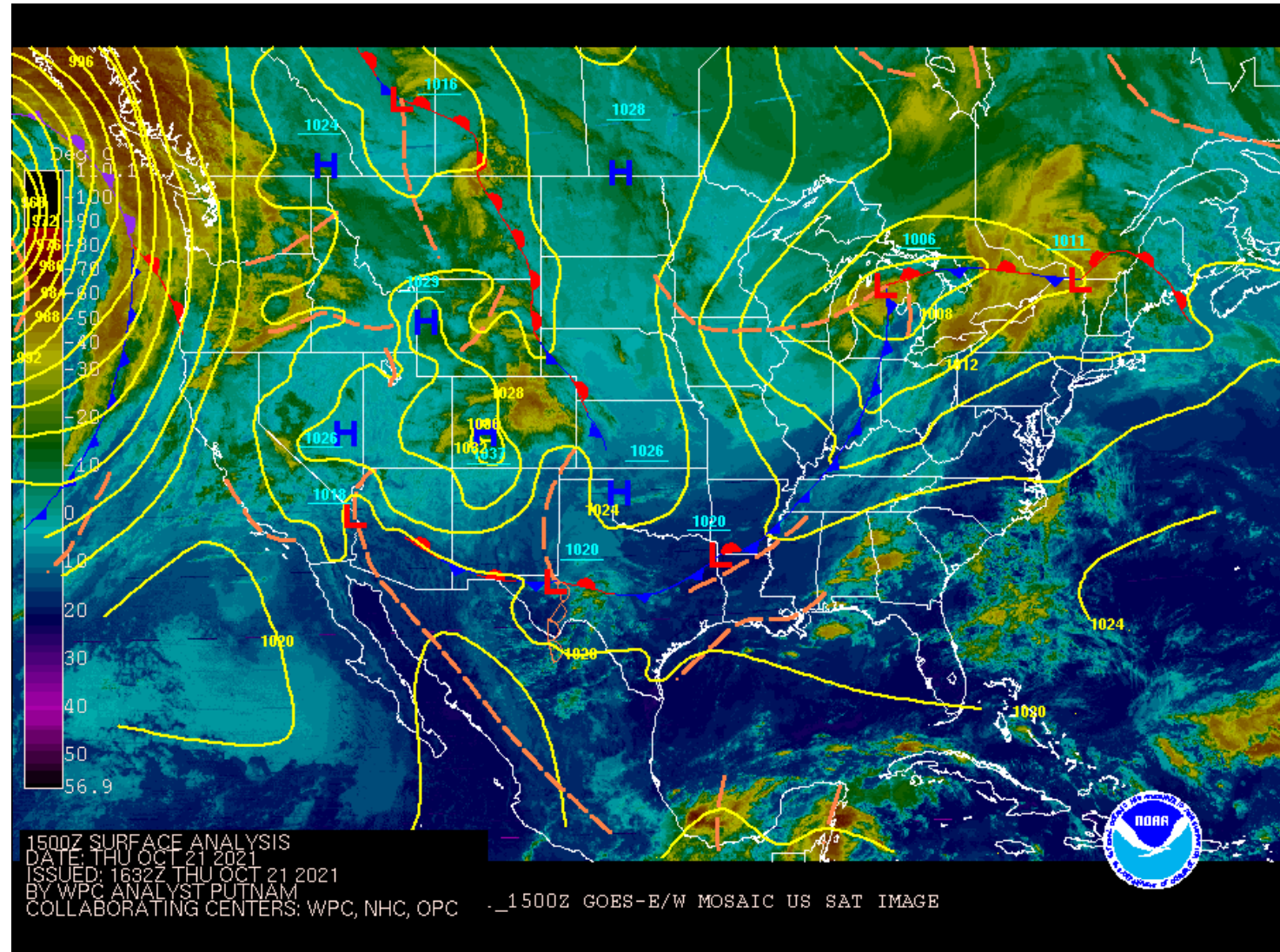


Surface Weather Map with Fronts



Lake Charles
WEATHER FORECAST OFFICE

A trailing cold front is noted from central Texas northeast toward low pressure over the Great Lakes. A weak trough is also located across southeast Louisiana into the northwest Gulf of Mexico.

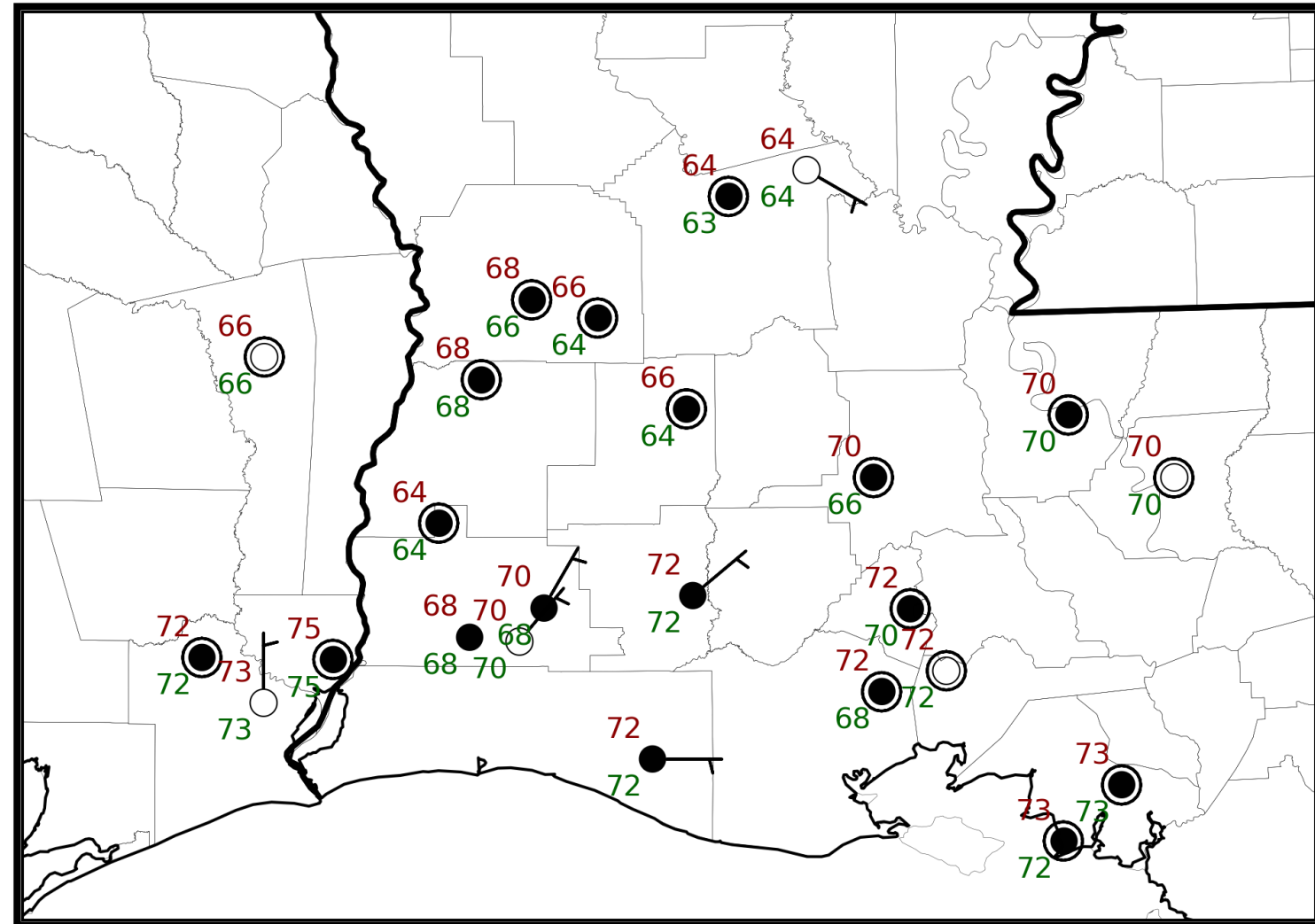


6 am Weather Observations



Lake Charles
WEATHER FORECAST OFFICE

Early this morning, low level moisture and light winds combined to produce widespread dense fog across the area. Temperatures were mostly in the upper 60s to lower 70s.

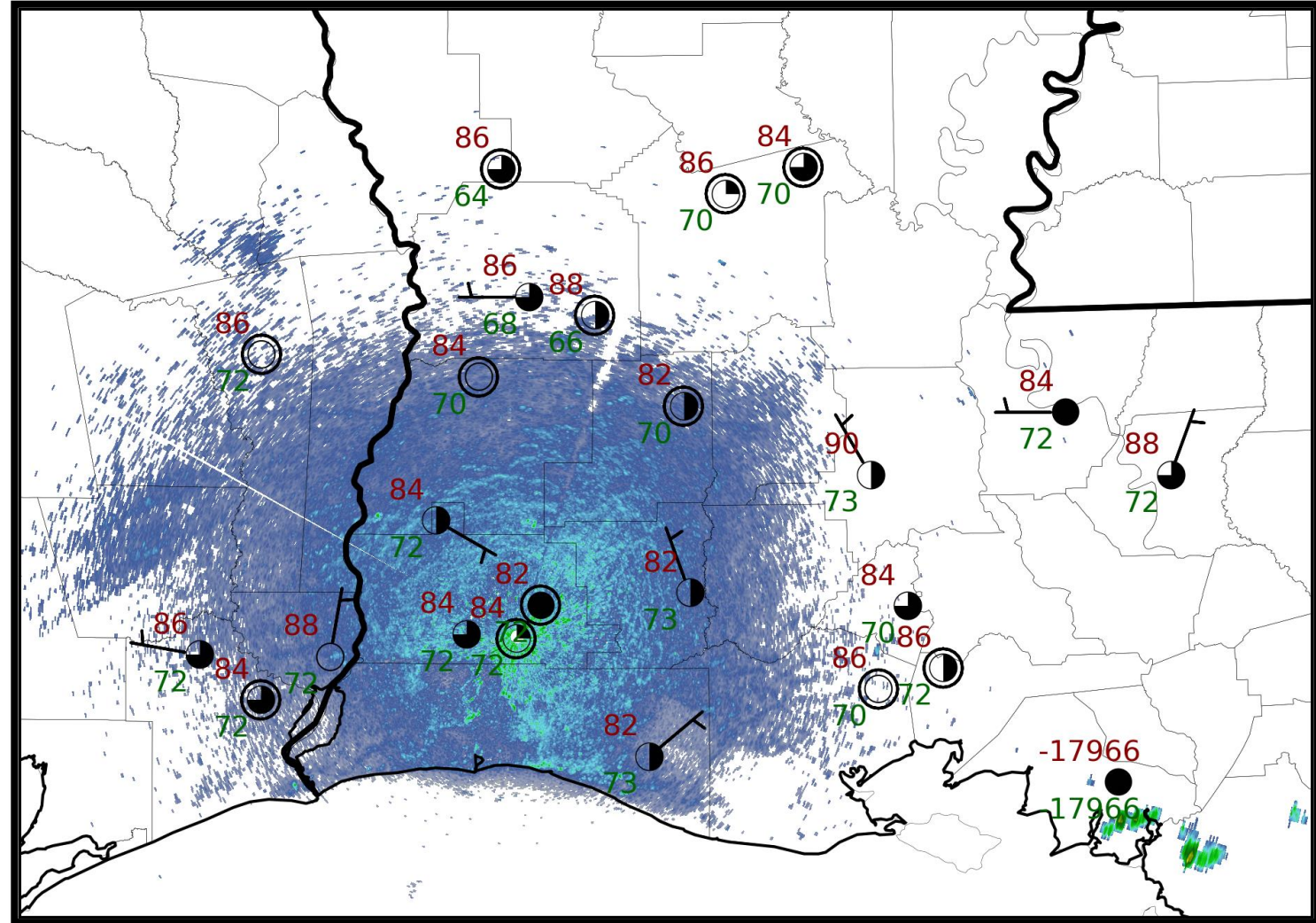


2 pm Weather Observations



Lake Charles
WEATHER FORECAST OFFICE

Warm and muggy conditions are noted across the area, with temperatures in the middle 80s. A few showers have developed over the lower Atchafalaya Basin.





NWS LCH REGIONAL WEATHER

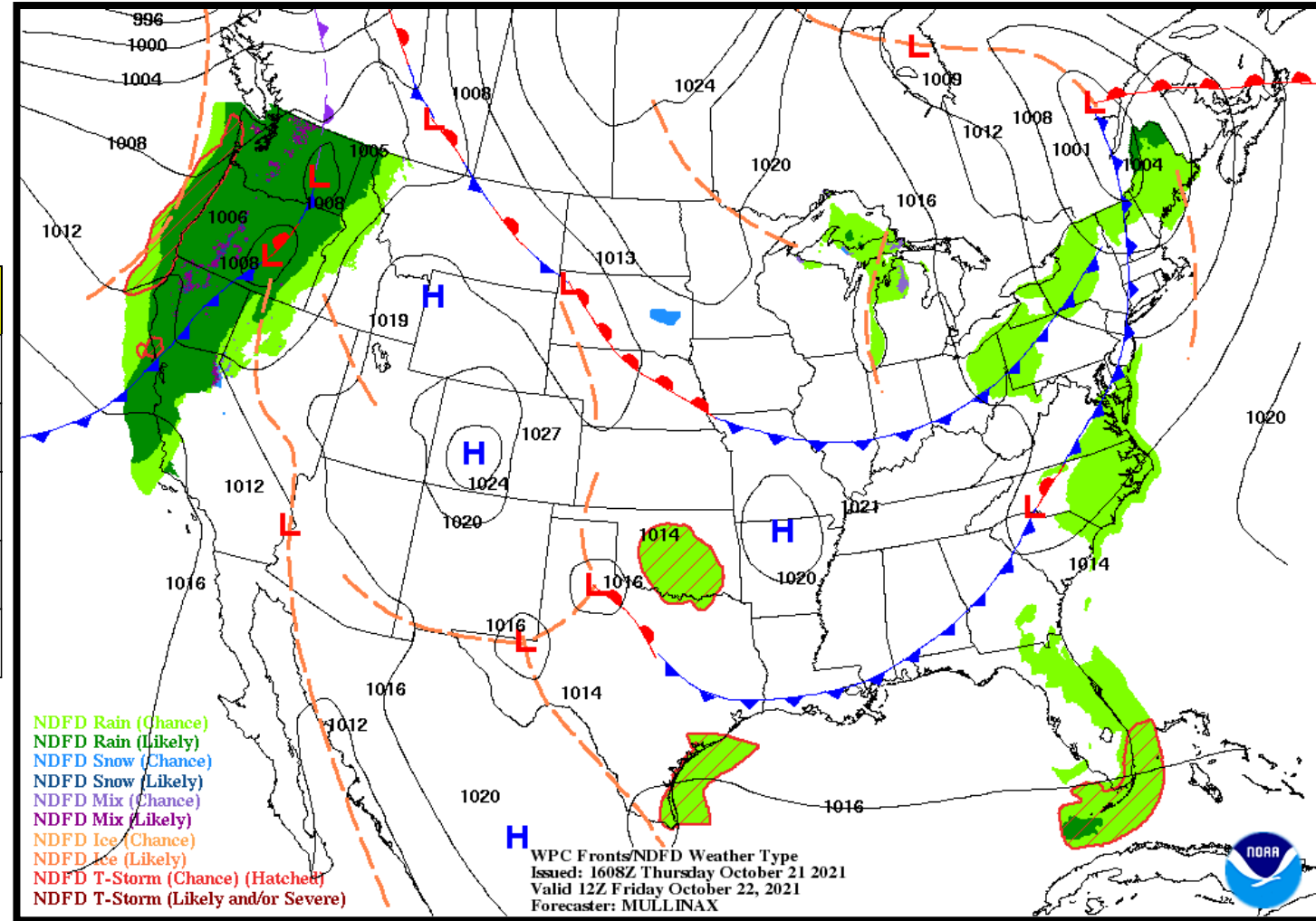
Low Temperature 58-68 F

High Temperature 84-87 F

Wind NE 5 mph

Rain Chances 10%

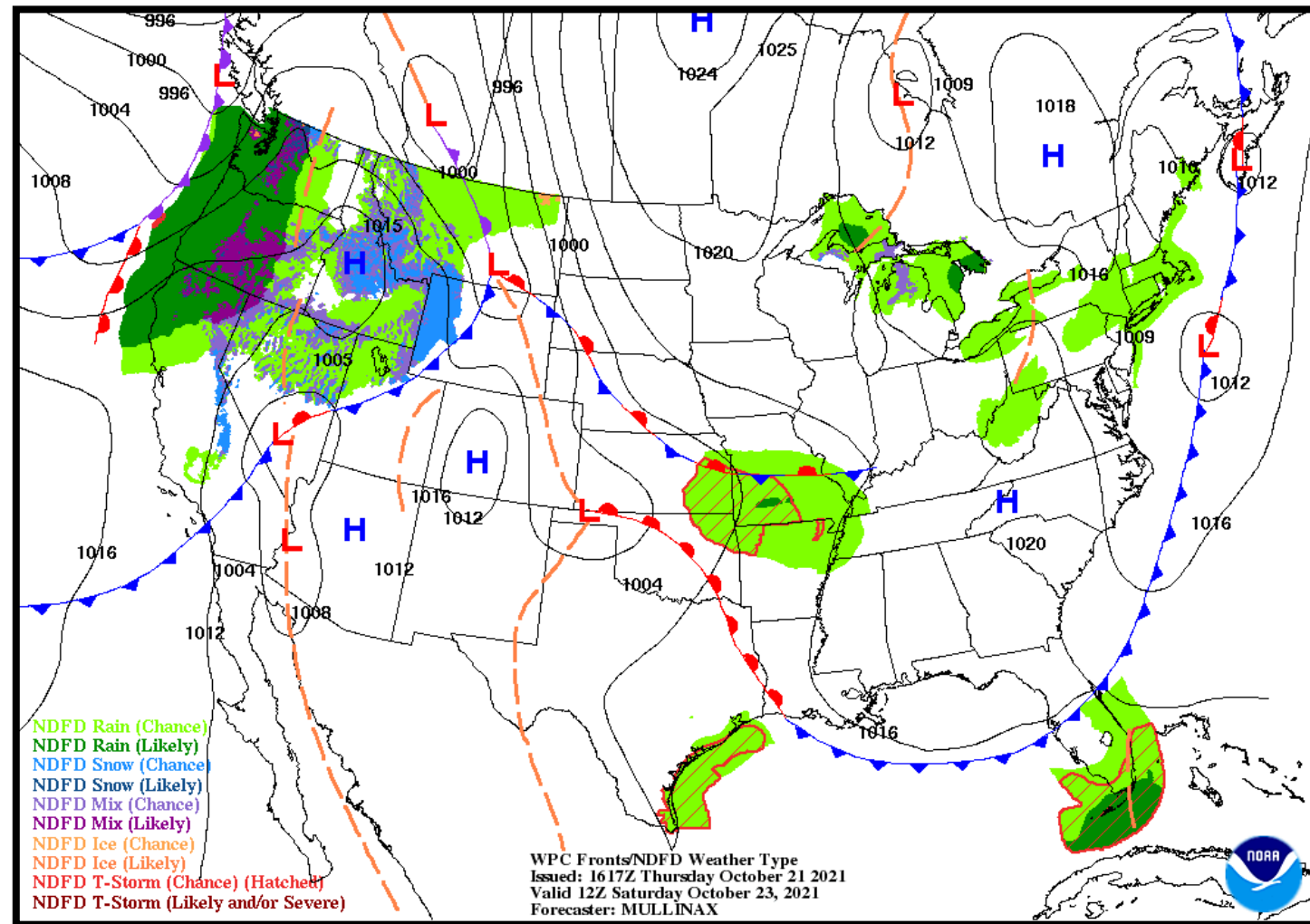
Weather Hazards None





NWS LCH REGIONAL WEATHER

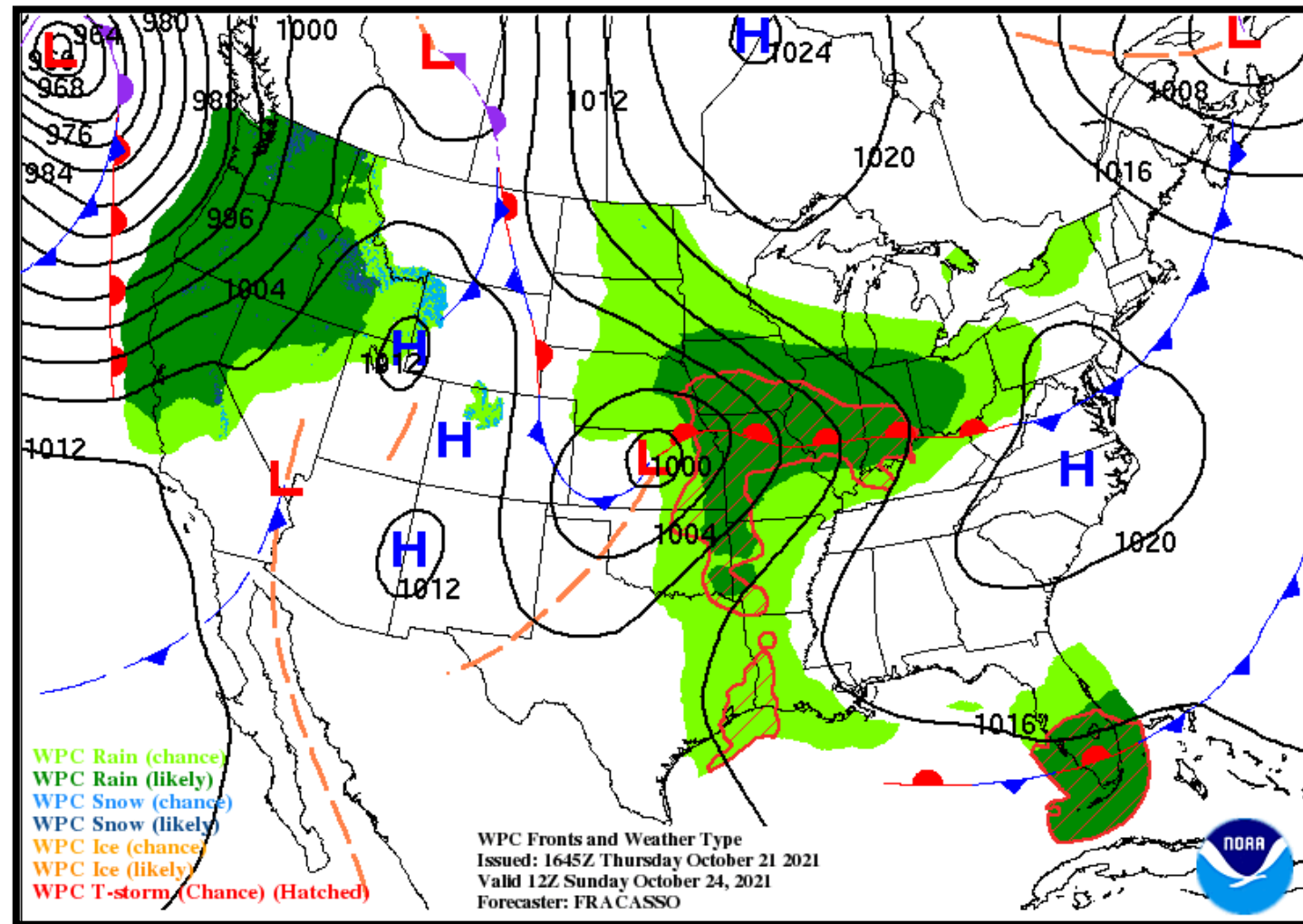
Low Temperature	60-67 F
High Temperature	83-86 F
Wind	SSE 5 mph
Rain Chances	10-25%
Weather Hazards	Thunderstorms





NWS LCH REGIONAL WEATHER

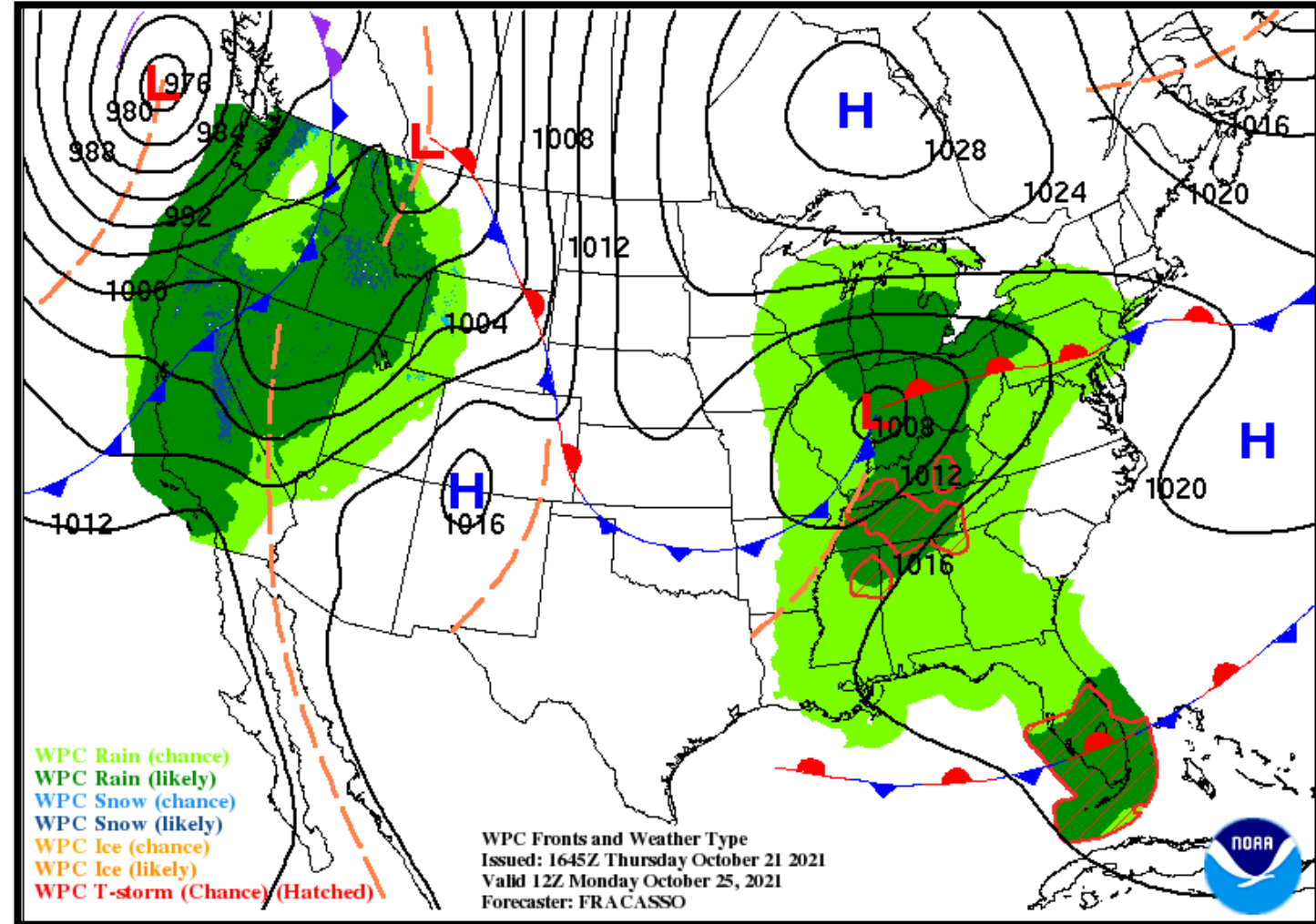
Low Temperature	63-69 F
High Temperature	83-87 F
Wind	SSE 5-10 mph
Rain Chances	30-50%
Weather Hazards	Thunderstorms





NWS LCH REGIONAL WEATHER

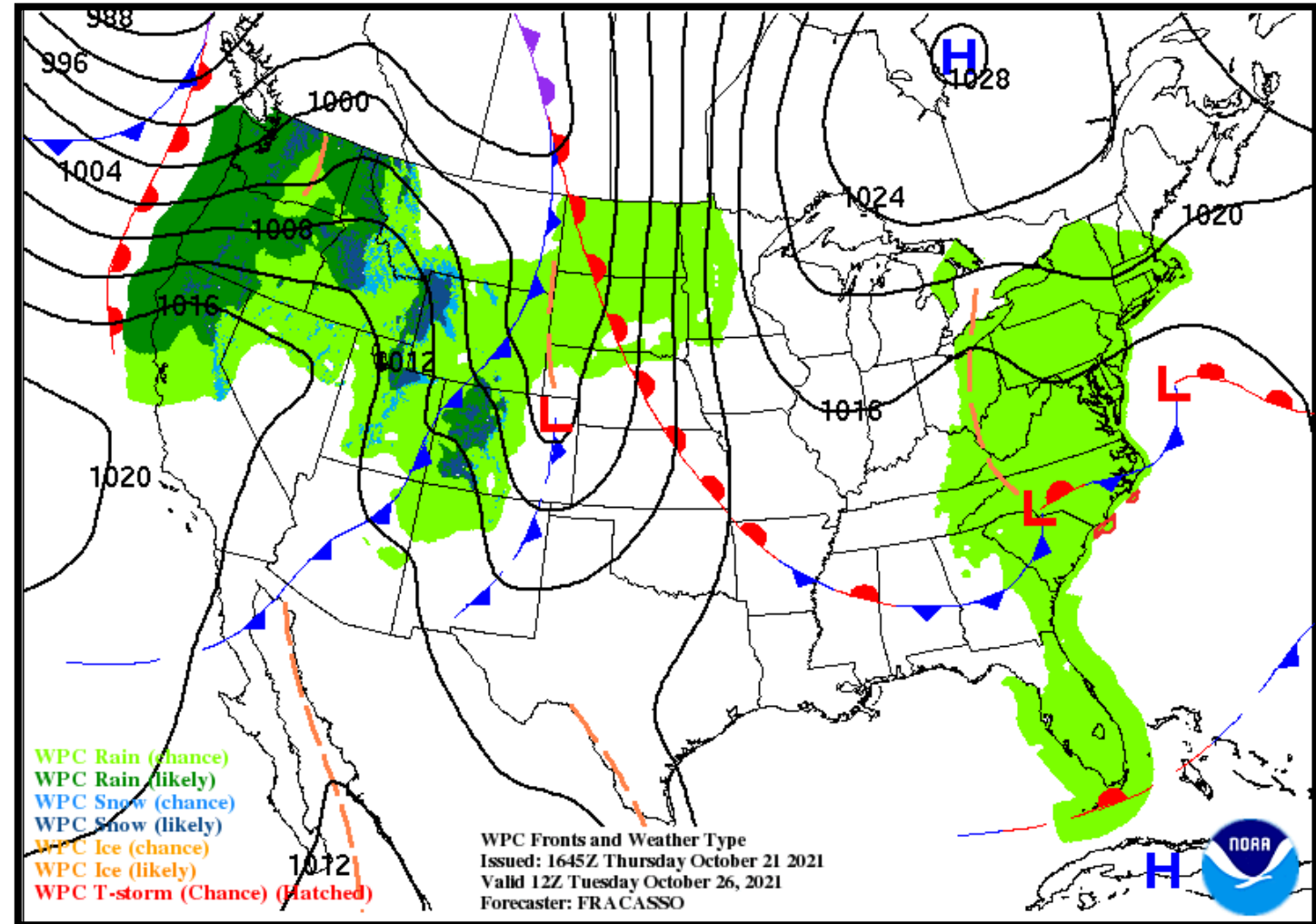
Low Temperature	67-72 F
High Temperature	86-89 F
Wind	SW 5 mph
Rain Chances	20-30%
Weather Hazards	Thunderstorms





NWS LCH REGIONAL WEATHER

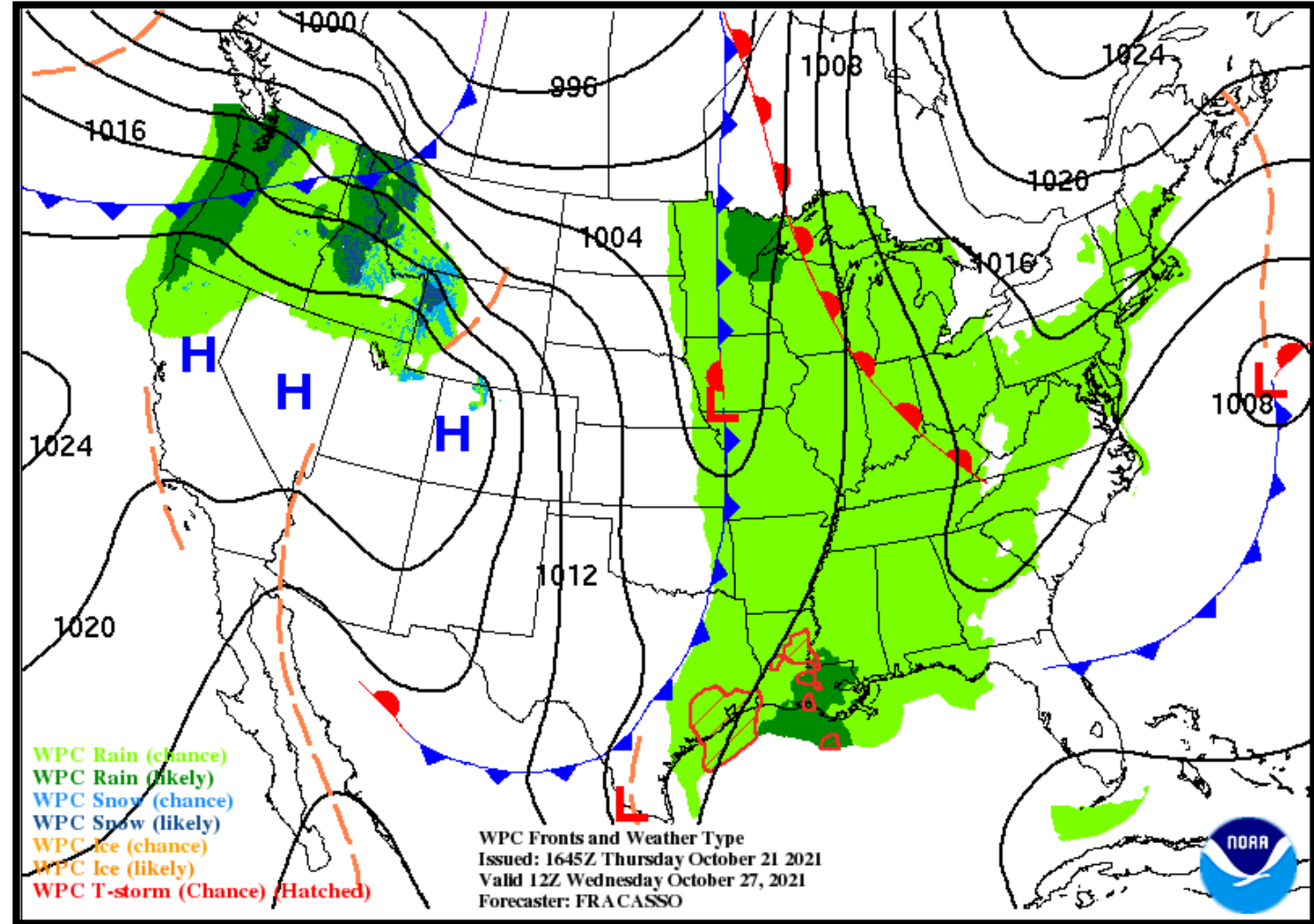
Low Temperature	65-70 F
High Temperature	85-89 F
Wind	S 5 mph
Rain Chances	15-20%
Weather Hazards	Thunderstorms





NWS LCH REGIONAL WEATHER

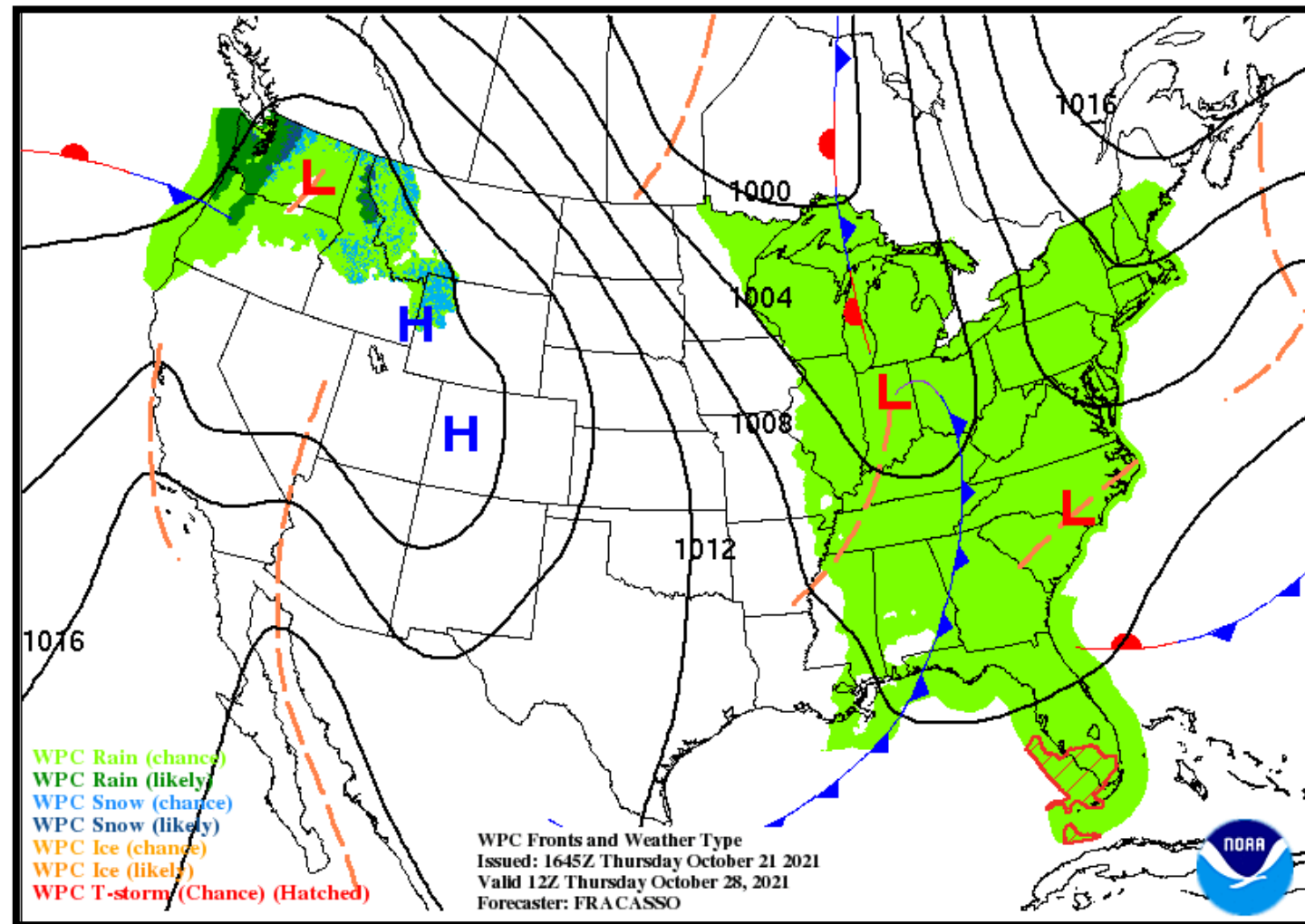
Low Temperature	68-72 F
High Temperature	79-84 F
Wind	S 5-10 mph
Rain Chances	40-50%
Weather Hazards	Thunderstorms





NWS LCH REGIONAL WEATHER

Low Temperature	56-62 F
High Temperature	76-79 F
Wind	NNW 5-10 mph
Rain Chances	10-20%
Weather Hazards	Thunderstorms



Weekly Weather Summary Table



Lake Charles
WEATHER FORECAST OFFICE

Color Codes Except for Temperatures	Weather	Friday 10/22/21	Saturday 10/23/21	Sunday 10/24/21	Monday 10/25/21	Tuesday 10/26/21	Wednesday 10/27/21	Thursday 10/28/21
Yellow = Low Threat	Rain Total	None	< 0.10"	< 0.10"	< 0.10"	< 0.10"	0.50-1.0"	0.10-0.25"
Orange = Moderate Threat								
Red = High Threat	T-Storm/ Lightning	None	Isolated	Scattered	Scattered	Isolated	Scattered	None
	Tornado/Hail/ Dmg Wind	None	None	None	None	None	None	None
Color Codes For Temperatures	Wind	NE 5 mph	SSE 5 mph	SSE 5-10 mph	SW 5 mph	S 5 mph	S 5-10 mph	NNW 5-10 mph
Yellow=5 F above normal	Tides	Above Normal	Above Normal	Above Normal	Above Normal	Above Normal	Above Normal	Above Normal
Orange=10 F above normal								
Red=15 F above normal	Wave Height	Near: 0-1 ft Off: 1-2 ft	Near: 1-2 ft Off: 2-3 ft	Near: 1-3 ft Off: 4-5 ft	Near: 1-3 ft Off: 3-4 ft	Near: 1-2 ft Off: 2-3 ft	Near: 2-4 ft Off: 4-6 ft	Near: 2-4 ft Off: 4-6 ft
Vry Lt Blue=5 F below normal	Temperature <small>Normal Low: 50-57 F Normal High: 75-77 F</small>	Low: 58-68 F	Low: 60-67 F	Low: 63-69 F	Low: 67-72 F	Low: 65-70 F	Low: 68-72 F	Low: 56-62 F
Lt Blue=10 F below normal		High: 84-87 F	High: 83-86 F	High: 83-87 F	High: 86-89 F	High: 85-89 F	High: 76-79 F	High: 76-79 F
Blue=15 F below normal								



- Above normal temperatures expected through the next seven days
- Isolated to scattered showers or storms will be possible each day, but no heavy rainfall is expected.
- The next significant cold front is expected to move through late next week.

