



Weekly Weather Update

2:30 PM CST

Thursday, December 9, 2021

Alex Donato, *NWS Lake Charles*



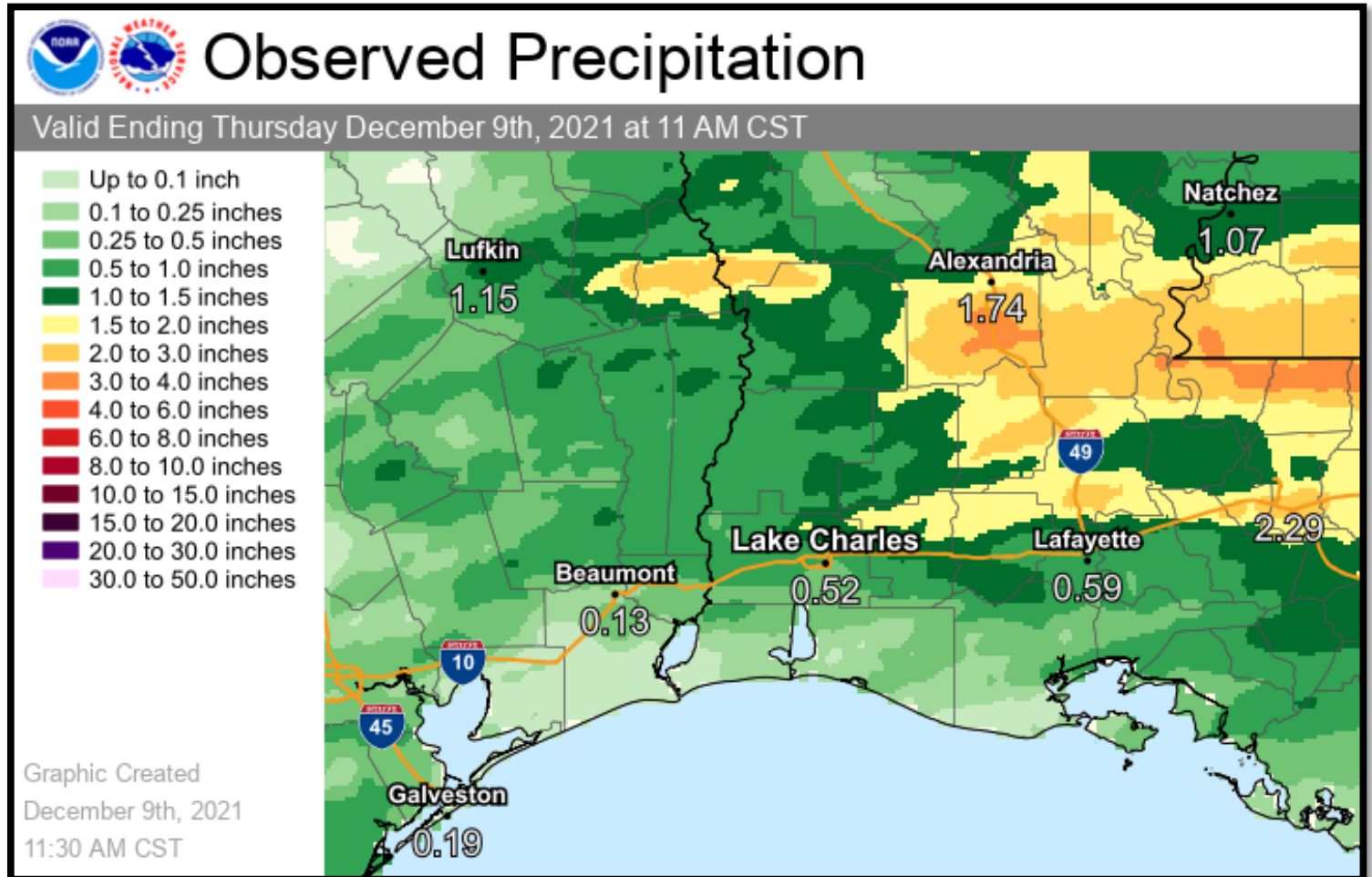


TOP STORY:

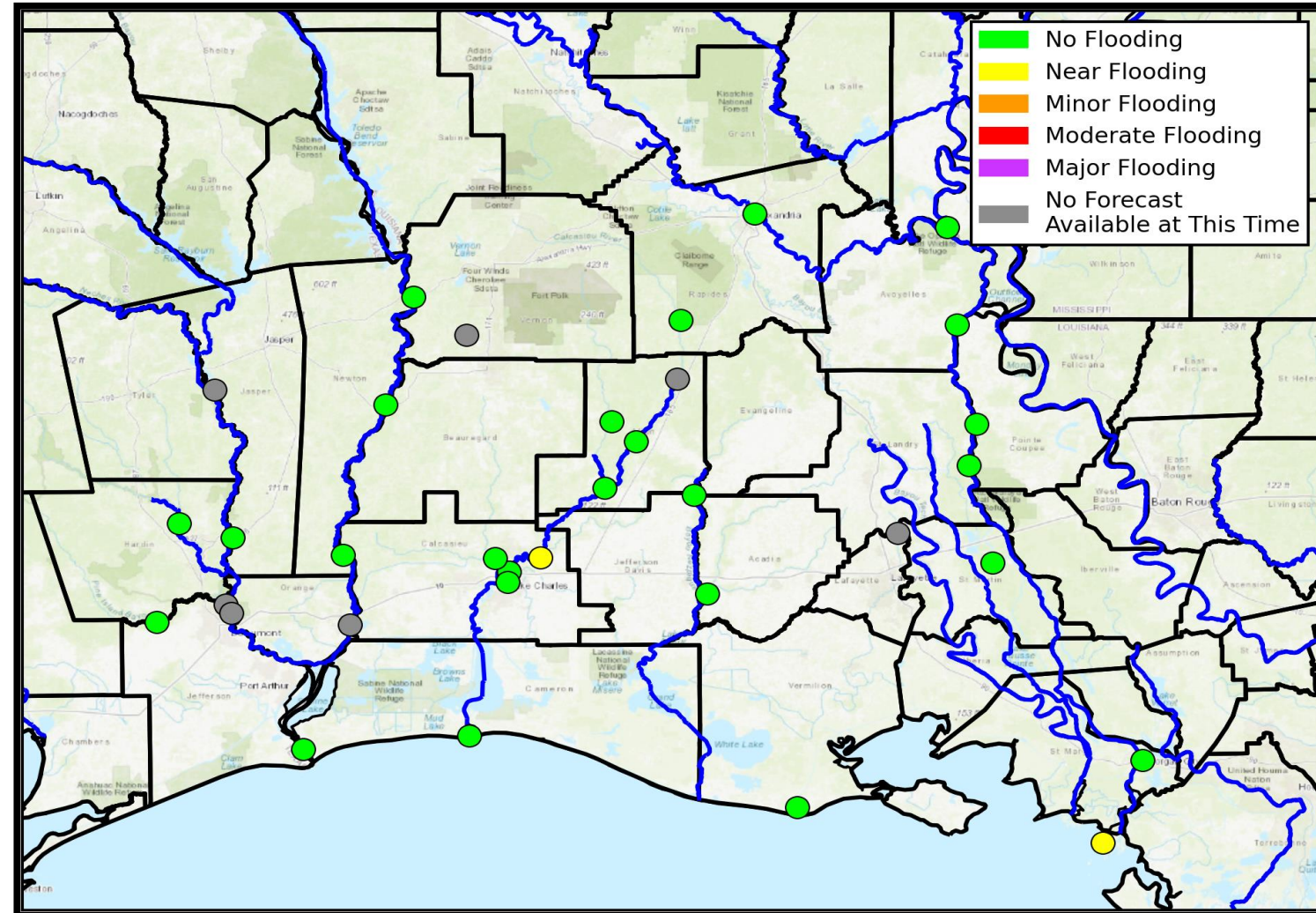
Slight Risk of Severe Weather Friday evening into Saturday as a cold front moves through the area. Much cooler weather will be expected Sunday with a quick warm up early next week.

	Low Temperatures	High Temperatures	Chance For Rain
Friday	67-70 F	80-82 F	10-35%
Saturday	54-64 F	63-73 F	20-60%
Sunday	37-43 F	60-64 F	<10%
Monday	39-50 F	69-73 F	10%
Tuesday	52-61 F	75-78 F	<10%
Wednesday	55-62 F	75-78 F	<10%
Thursday	58-64 F	75-79 F	10%
Normals This Time of Year	38-45 F	61-65 F	30%-45%

A frontal system came through the area early this week which brought some rainfall accumulation.



There are currently no rivers in flood. There will be a marginal risk of flooding for parts of the area Friday evening into Saturday.

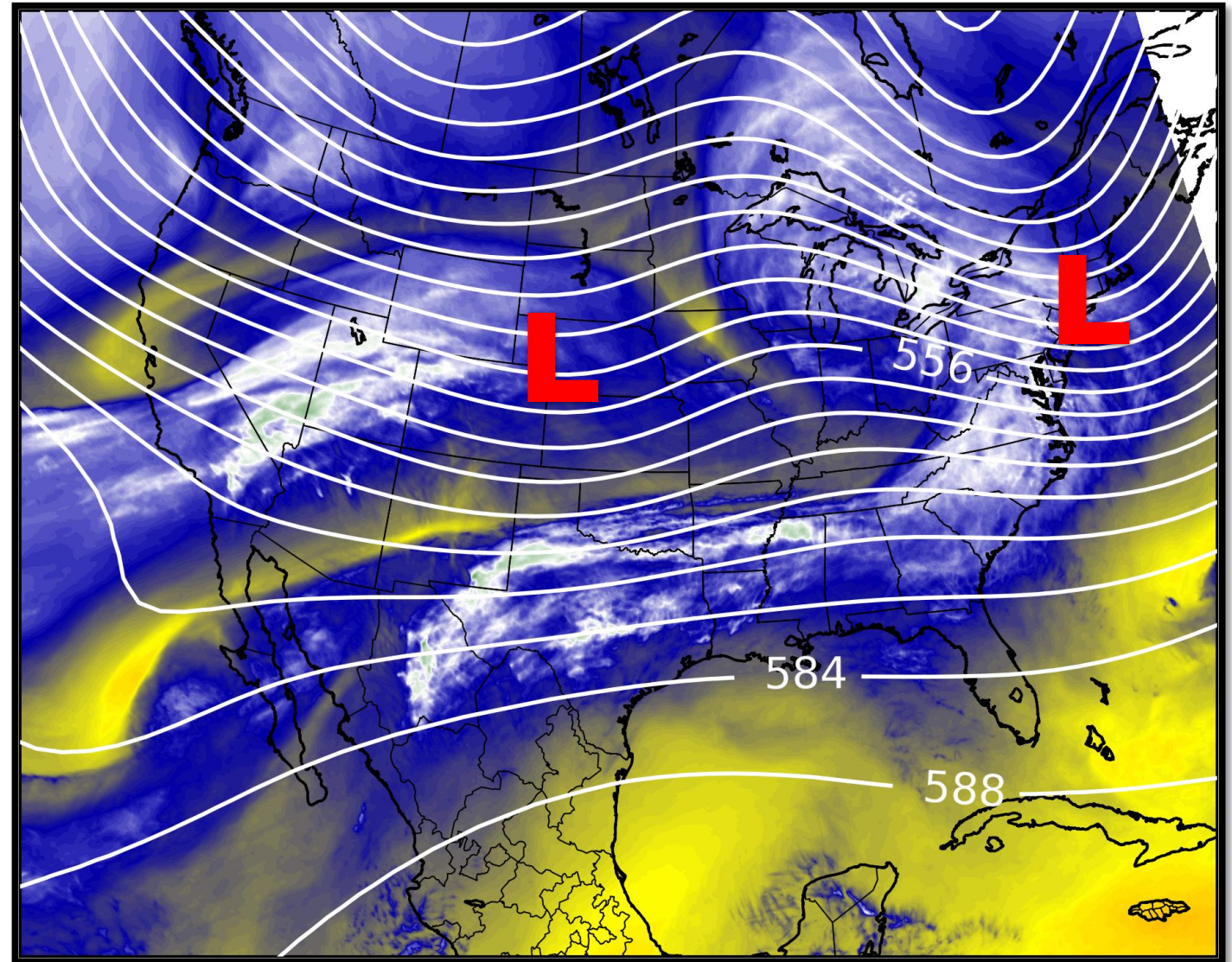


Upper Level Steering Patterns



Lake Charles
WEATHER FORECAST OFFICE

Upper-level trough over the Eastern U.S. with another trough in the Central U.S.

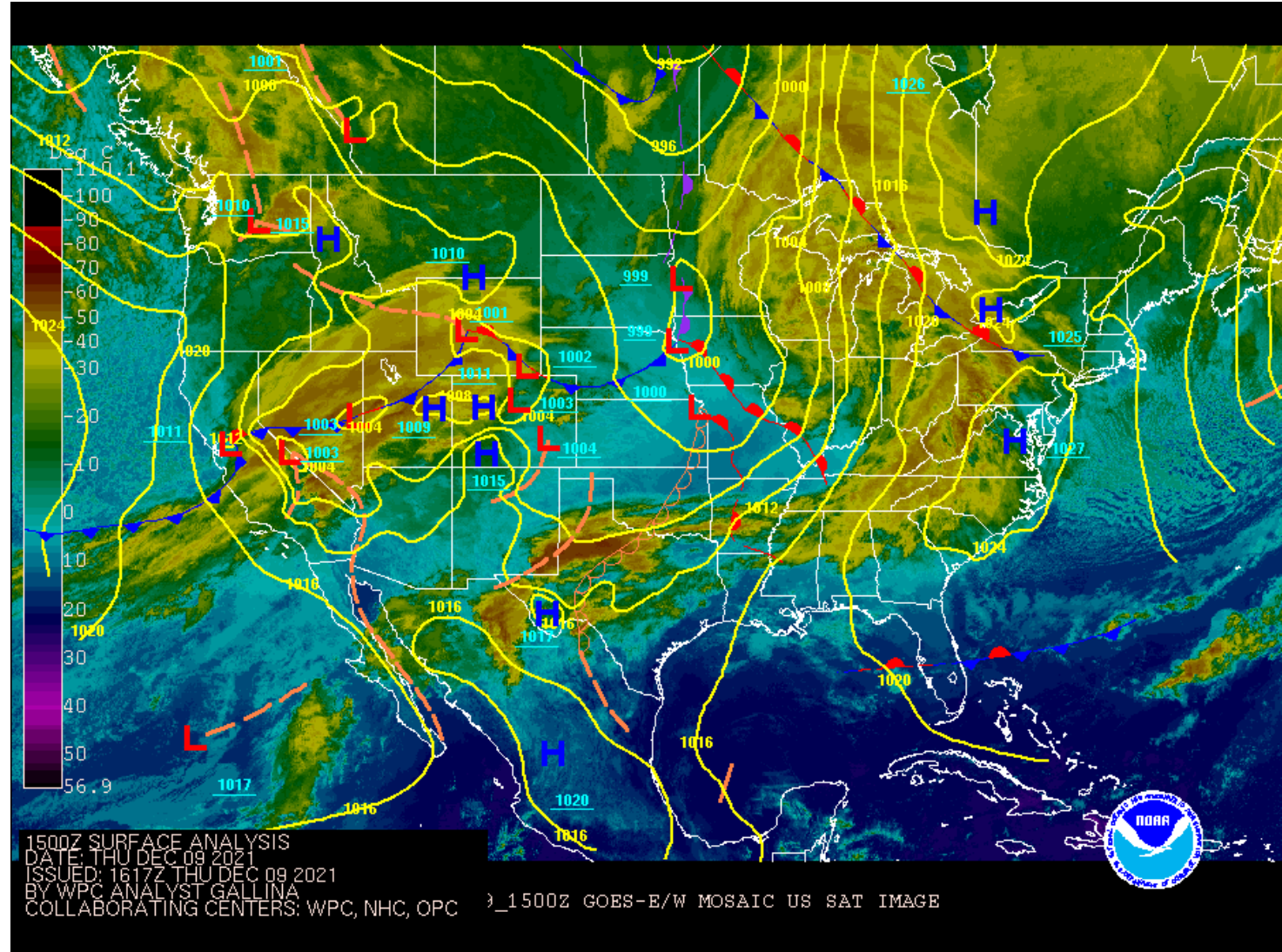


Surface Weather Map with Fronts



Lake Charles
WEATHER FORECAST OFFICE

A frontal system currently over the Central U.S. will be impacting our area Friday into Saturday.

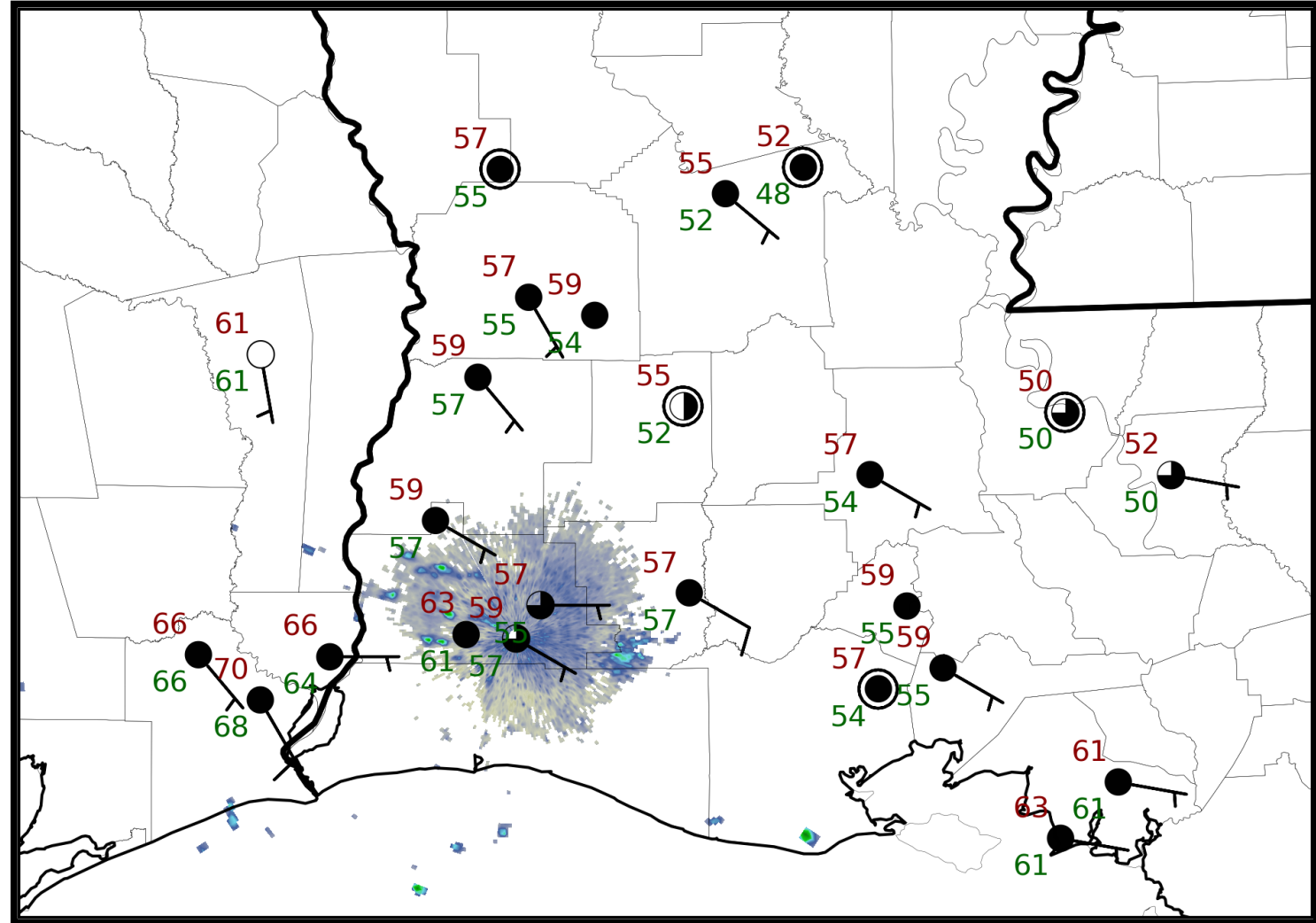


6 am Weather Observations



Lake Charles
WEATHER FORECAST OFFICE

A few showers were present this morning over parts of the area with cloudy skies and low-level clouds. Temperatures were primarily in the 50s and 60s with ESE winds at 5 to 10 MPH.

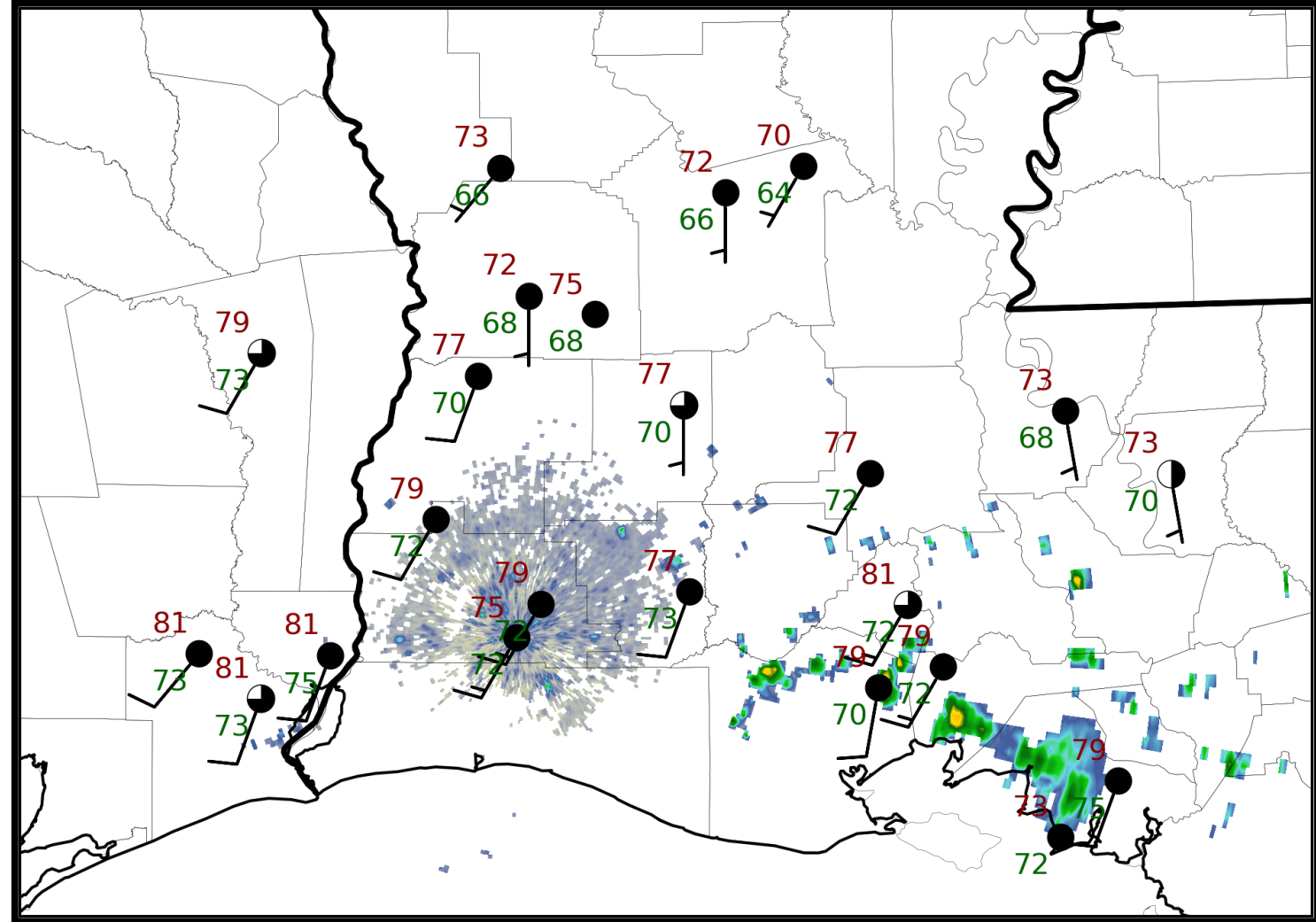


2 pm Weather Observations



Lake Charles
WEATHER FORECAST OFFICE

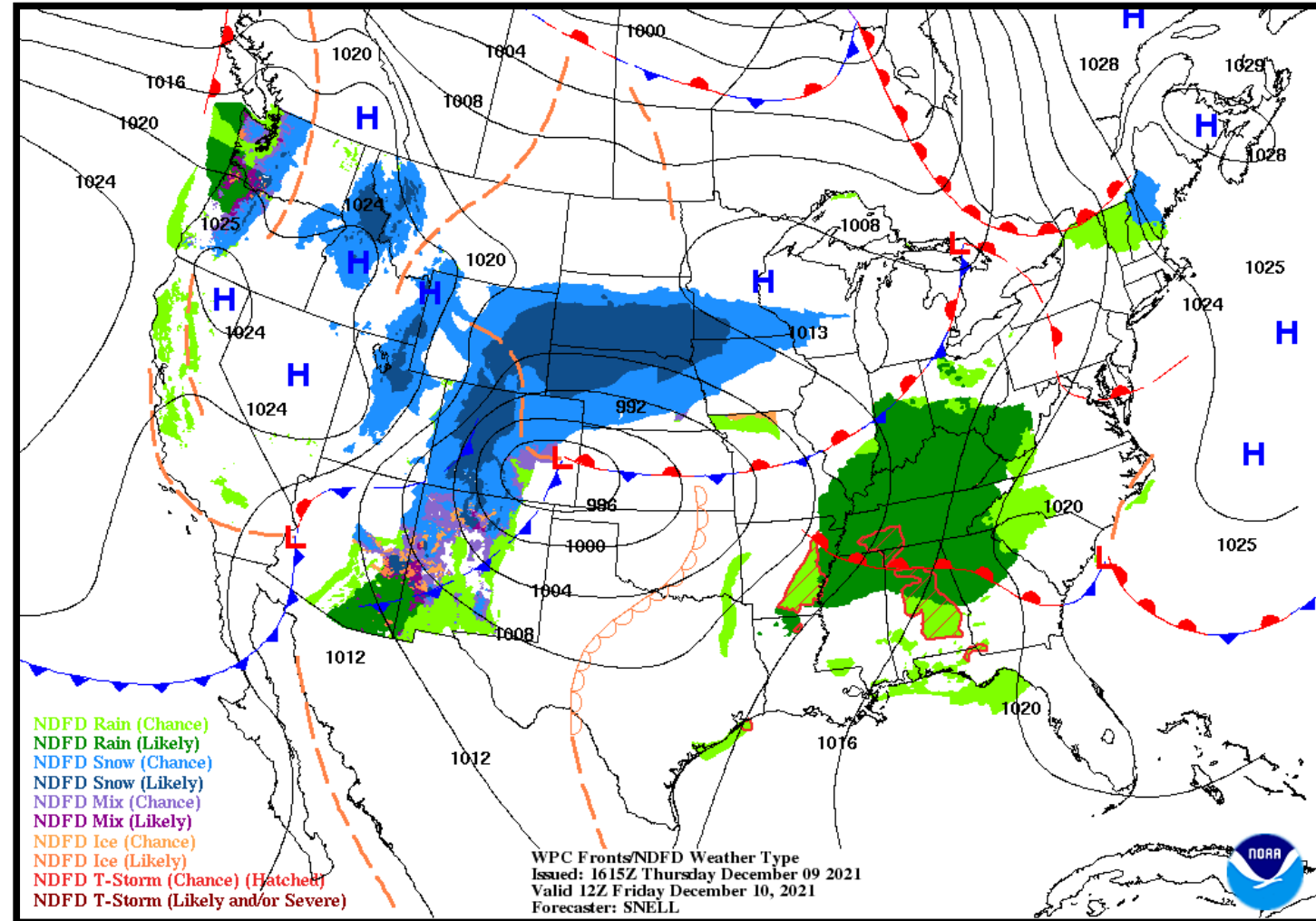
Cloudy skies throughout the area with a few showers and thunderstorms. Temperatures were in the 70s and low 80s with SSW winds at 5 to 15 MPH.





NWS LCH REGIONAL WEATHER

Low Temperature	67-70 F
High Temperature	80-82 F
Wind	S 10-20 mph
Rain Chances	10-35%
Weather Hazards	Thunderstorms



Friday/Saturday Severe Threat



Lake Charles
WEATHER FORECAST OFFICE

The Storm Prediction Center has part of our area in a Slight Risk of Severe Weather Friday evening into Saturday morning. Damaging wind gusts, a few tornadoes, and lightning will be the primary risks.

Severe Weather Outlook - Slight

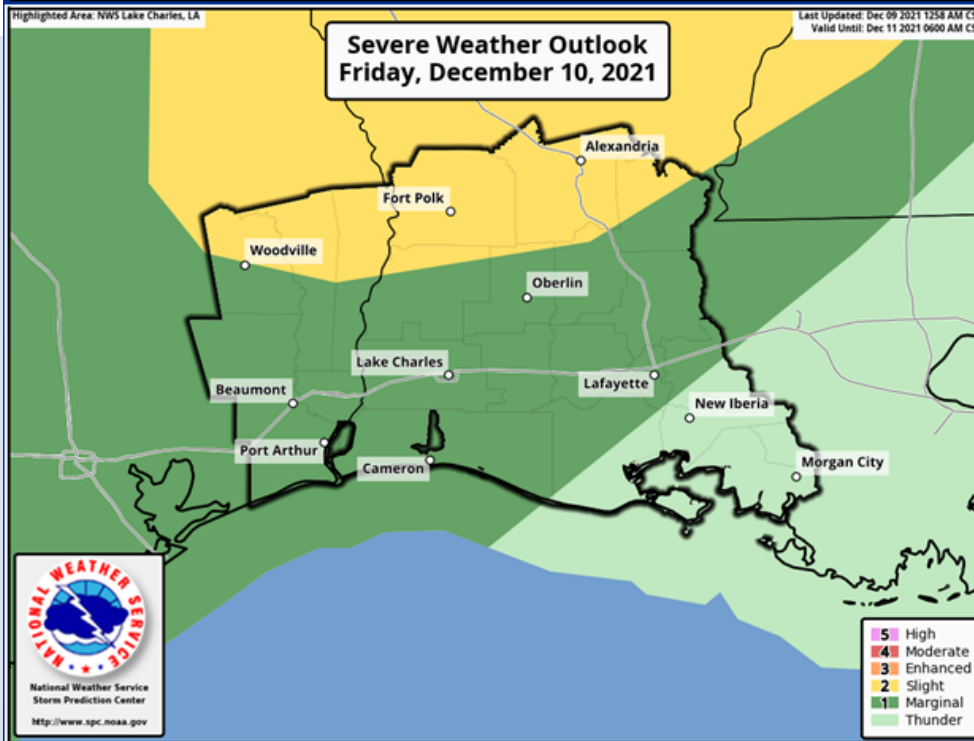
Storm Prediction Center Day 2 Outlook

Weather Forecast Office
Lake Charles, LA

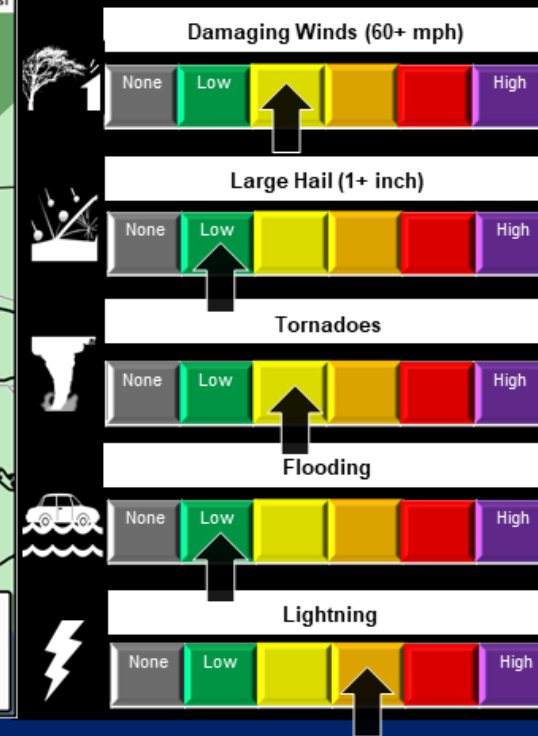
Issued December 9, 2021 10:08 AM CDT

Potential Risk Level : 2 out of 5

Timing : Friday Evening into Saturday Morning



Hazards



NWSLakeCharles

weather.gov/lch

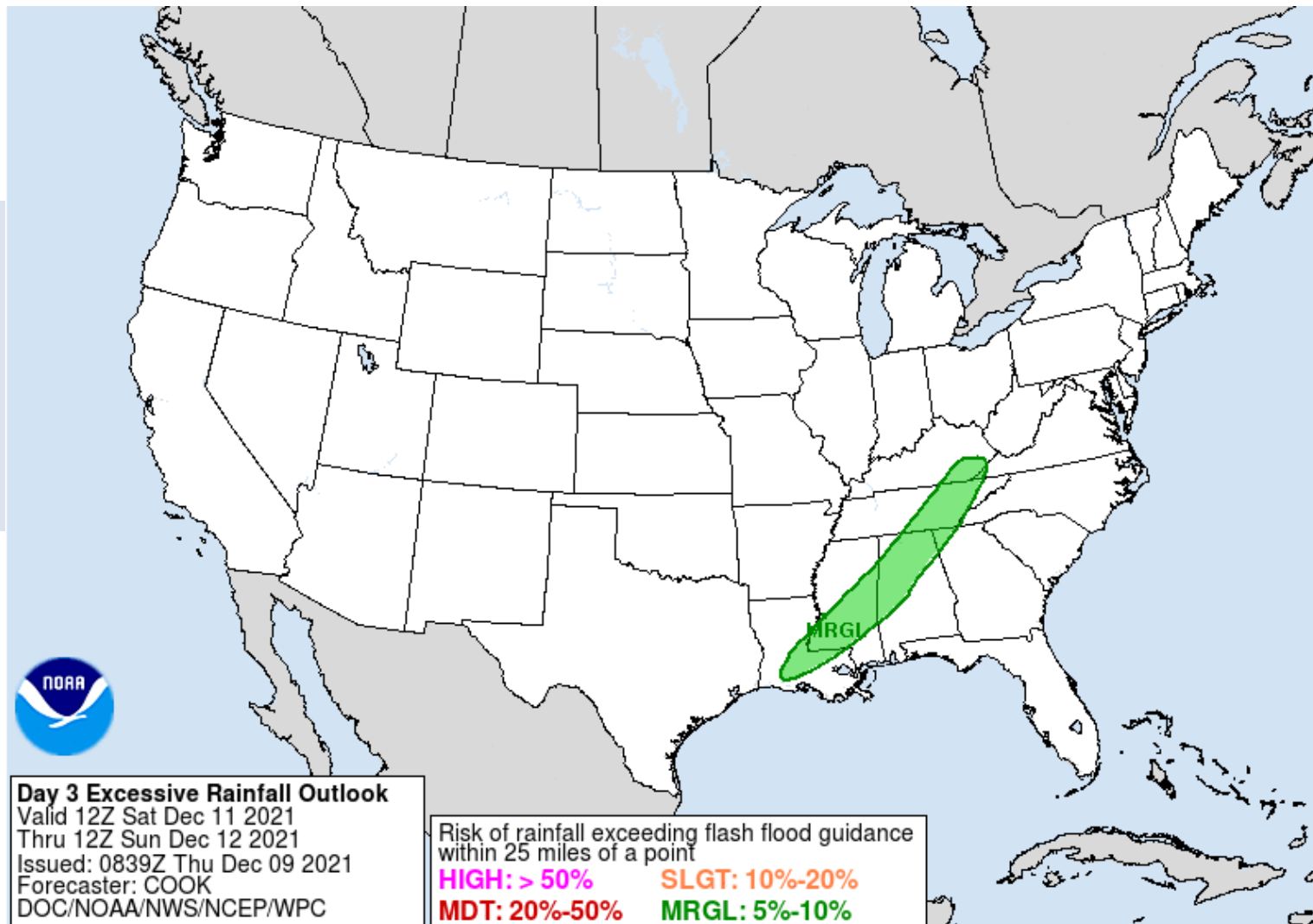


Friday/Saturday Excessive Rainfall Threat



Lake Charles
WEATHER FORECAST OFFICE

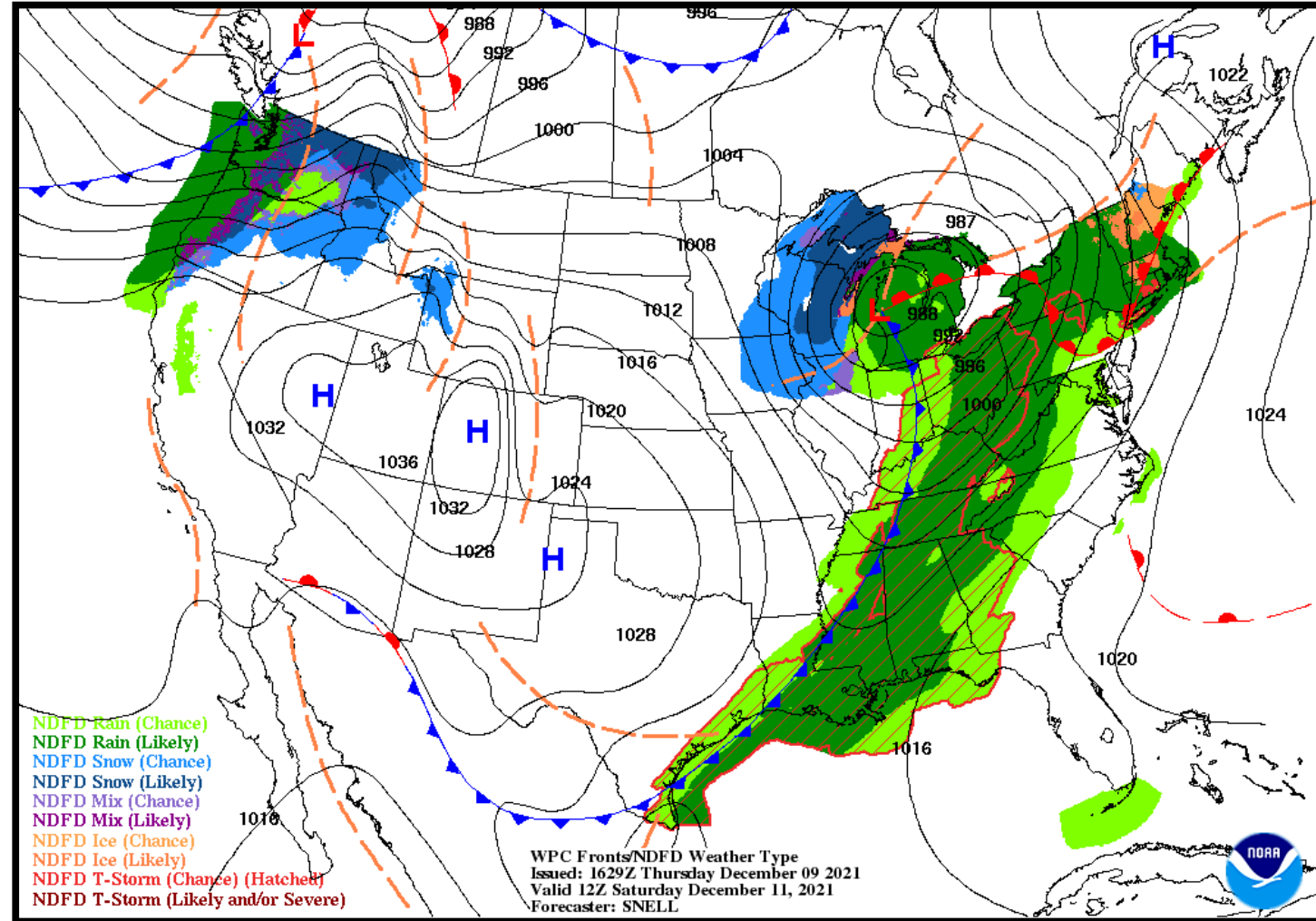
The Weather Prediction Center has part of our area in a Marginal Risk of Excessive Rainfall on Saturday.





NWS LCH REGIONAL WEATHER

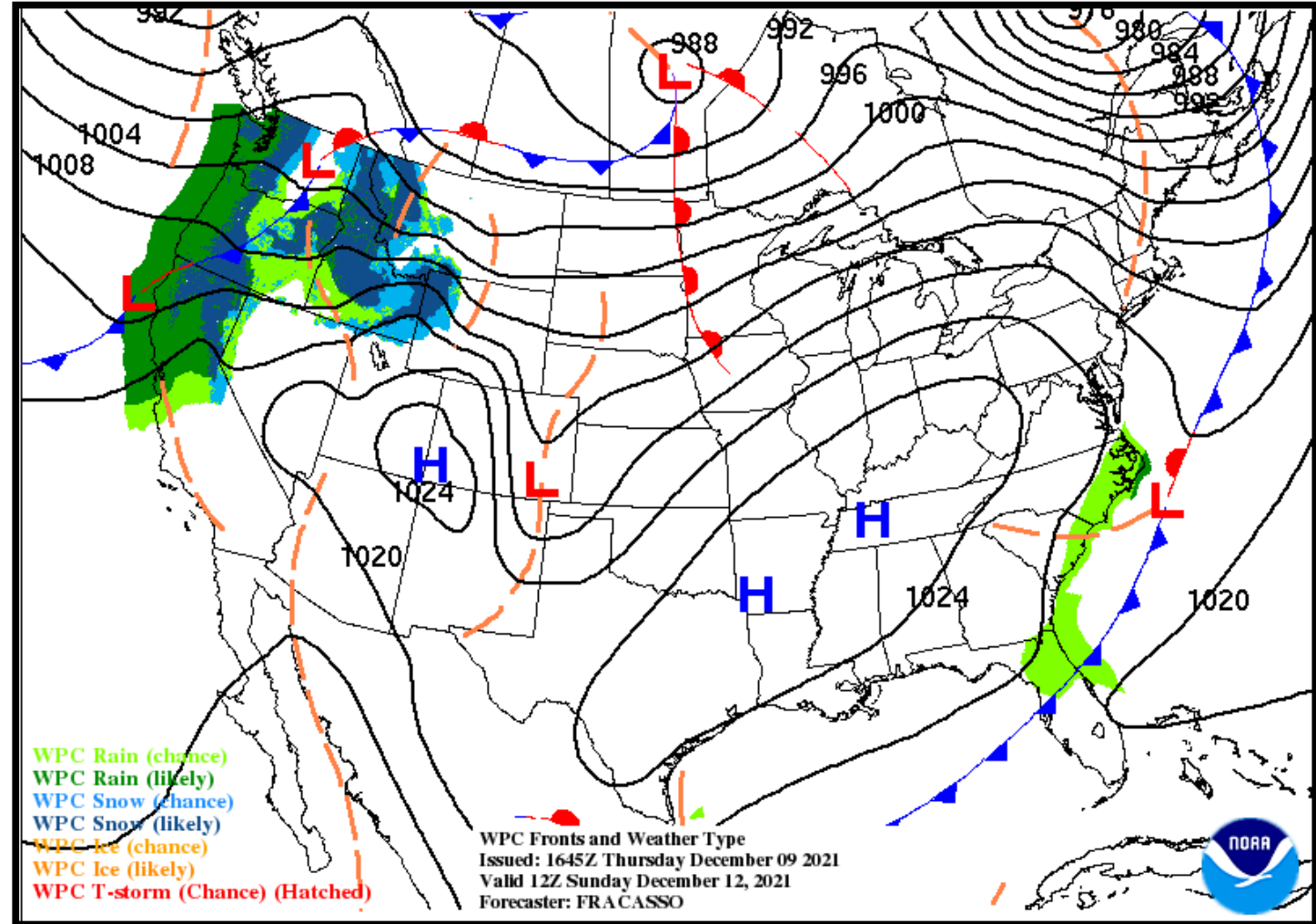
Low Temperature	54-64 F
High Temperature	63-73 F
Wind	N 10-15 mph
Rain Chances	20-60%
Weather Hazards	Thunderstorms





NWS LCH REGIONAL WEATHER

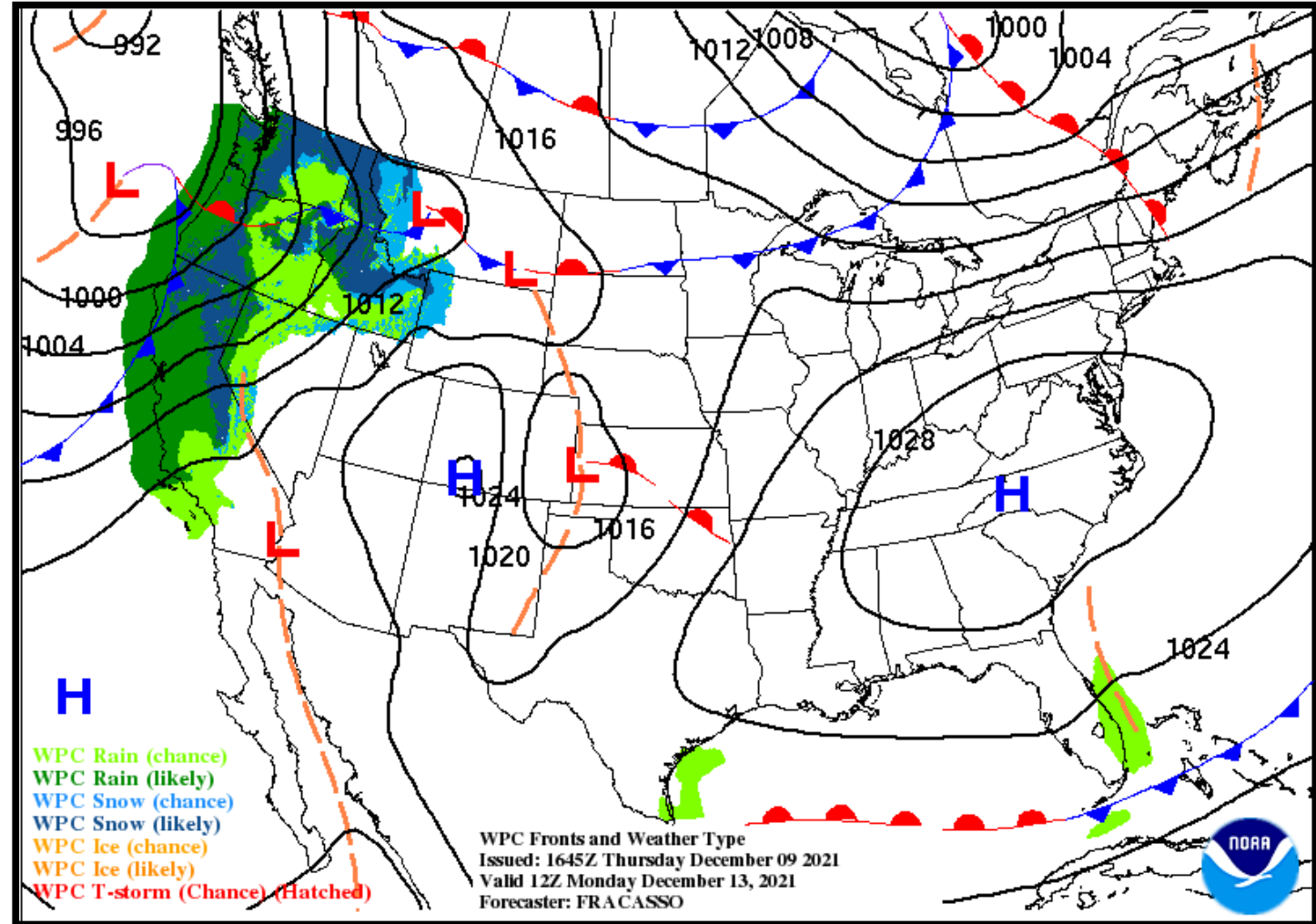
Low Temperature	37-43 F
High Temperature	60-64 F
Wind	ENE 5-10 mph
Rain Chances	<10%
Weather Hazards	Thunderstorms





NWS LCH REGIONAL WEATHER

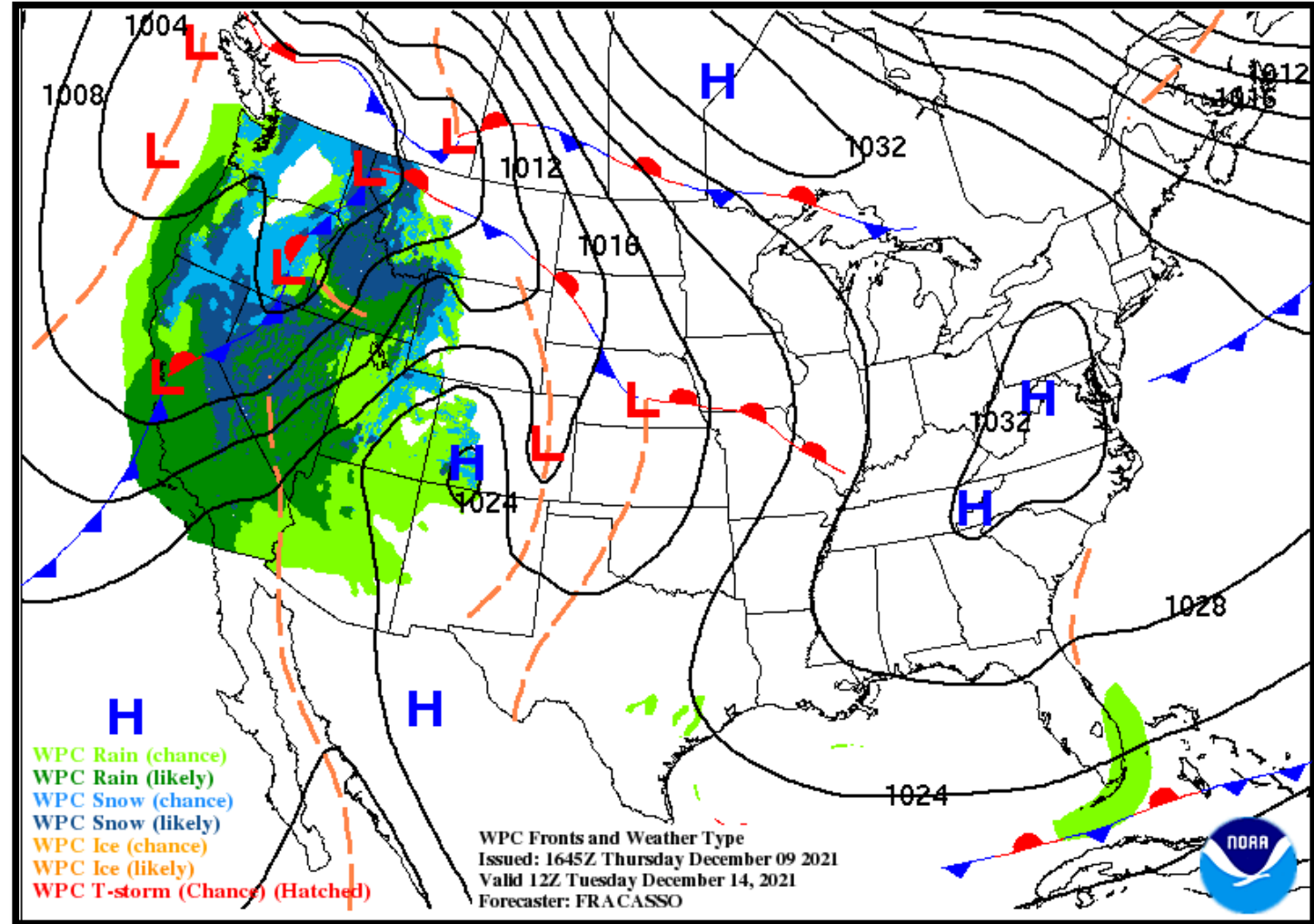
Low Temperature	39-50 F
High Temperature	69-73 F
Wind	E 5-10 mph
Rain Chances	10%
Weather Hazards	Thunderstorms





NWS LCH REGIONAL WEATHER

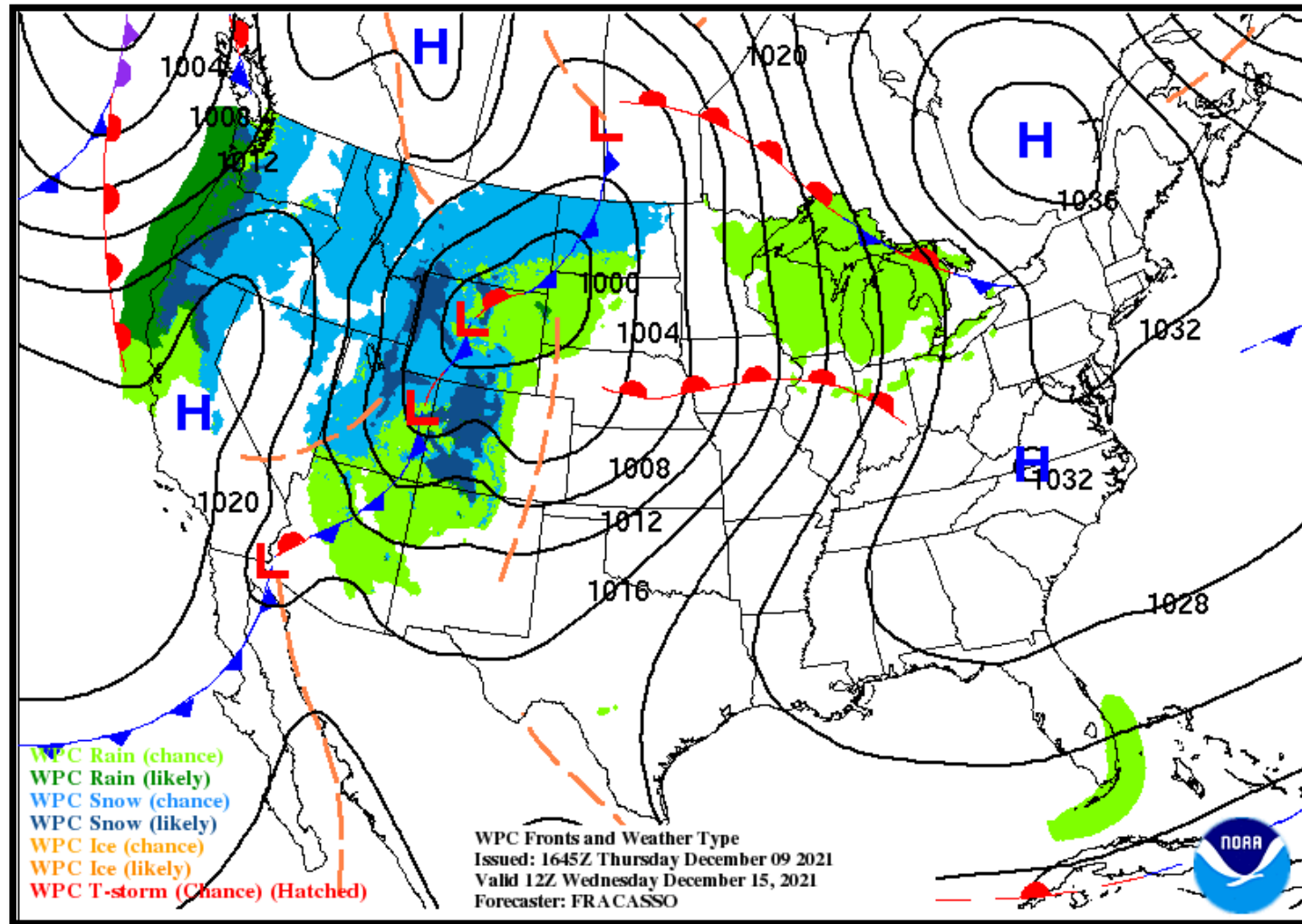
Low Temperature	52-61 F
High Temperature	75-78 F
Wind	SE 5-10 mph
Rain Chances	<10%
Weather Hazards	Thunderstorms





NWS LCH REGIONAL WEATHER

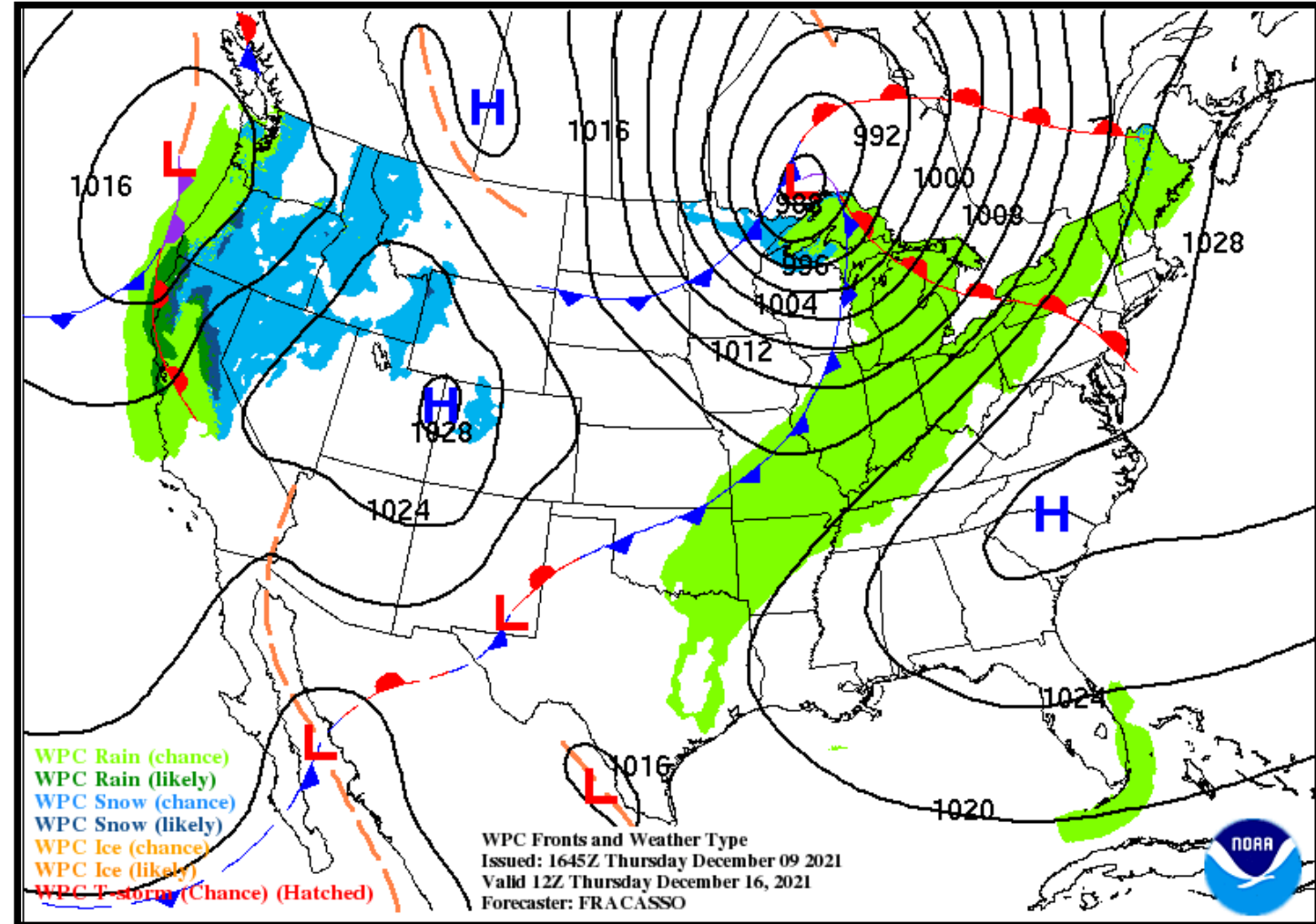
Low Temperature	55-62 F
High Temperature	75-78 F
Wind	SE 10 mph
Rain Chances	<10%
Weather Hazards	Thunderstorms





NWS LCH REGIONAL WEATHER

Low Temperature	58-64 F
High Temperature	75-79 F
Wind	SSE 5-10 mph
Rain Chances	10%
Weather Hazards	Thunderstorms



Weekly Weather Summary Table



Lake Charles
WEATHER FORECAST OFFICE

Color Codes Except for Temperatures	Weather	Friday 12/10/21	Saturday 12/11/21	Sunday 12/12/21	Monday 12/13/21	Tuesday 12/14/21	Wednesday 12/15/21	Thursday 12/16/21
Yellow = Low Threat	Rain Total	0.50-1.0"	0.25-0.50"	None	None	None	None	None
Orange = Moderate Threat	T-Storm/ Lightning	Scattered/ Numerous	Scattered/ Numerous					
Red = High Threat	Tornado/Hail/ Dmg Wind	Slight	Slight	None	None	None	None	None
	Wind	S 10-20 mph	N 10-15 mph	ENE 5-10 mph	E 5-10 mph	SE 5-10 mph	SE 10 mph	SSE 5-10 mph
	Tides	Near Normal	Near Normal	Near Normal	Near Normal	Near Normal	Near Normal	Near Normal
	Wave Height	Near: 1-4 ft Off: 5-6 ft	Near: 2-5 ft Off: 6-7 ft	Near: 1-5 ft Off: 6-7 ft	Near: 1-3 ft Off: 3-4 ft	Near: 1-3 ft Off: 4-5 ft	Near: 1-4 ft Off: 5-6 ft	Near: 1-4 ft Off: 5-6 ft
	Temperature	Low: 67-70 F	Low: 54-64 F	Low: 37-43 F	Low: 39-50 F	Low: 52-61 F	Low: 55-62 F	Low: 58-64 F
	Normal Low: 38-45 F Normal High: 61-65 F	High: 80-82 F	High: 63-73 F	High: 60-64 F	High: 69-73 F	High: 75-78 F	High: 75-78 F	High: 75-79 F

Color Codes For Temperatures
Yellow=5 F above normal
Orange=10 F above normal
Red=15 F above normal
Vry Lt Blue=5 F below normal
Lt Blue=10 F below normal
Blue=15 F below normal



- Slight Risk of severe weather Friday evening into Saturday as a cold front moves through the area.
- Marginal Risk of flooding for parts of the area Friday evening into Saturday.
- A significant cooldown expected after the front passes with a quick warm up early next week.
- Possibility for overnight/morning fog next week.

