



HEAVY RAIN BRIEFING

11:00 AM CDT

Wednesday, July 16, 2025

Prepared by:

NWS New Orleans/Baton Rouge

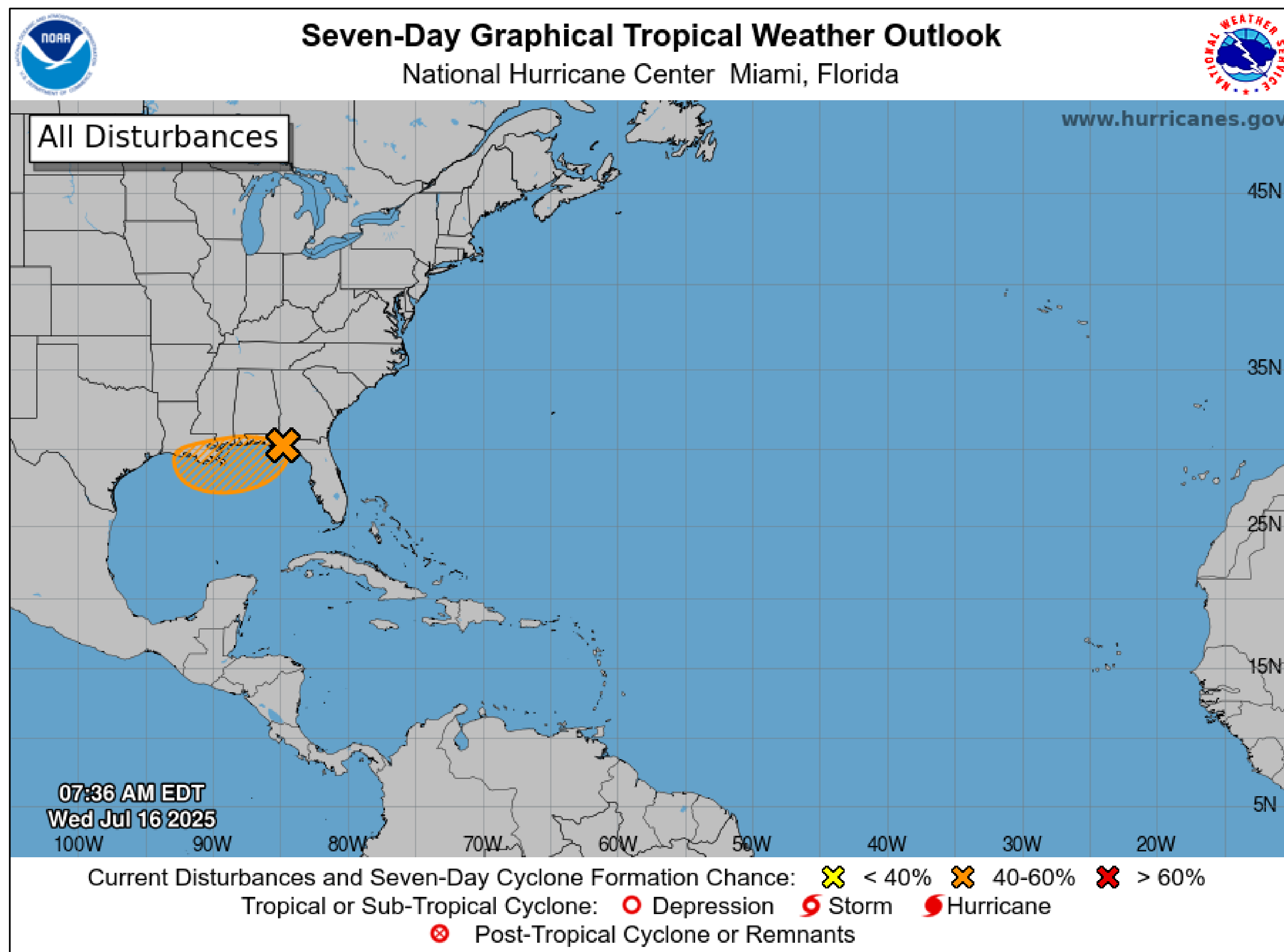


Situation Overview

- There is a medium (40%) chance of tropical cyclone development in the northern Gulf late this week.
- Regardless of development, the system will bring multiple rounds of heavy rain today through Saturday, with the greatest threat Thursday and Friday.
- High rainfall rates are likely to overwhelm drainage capacity at times, resulting in street flooding and at least a localized flash flooding threat.
- Areas that see the most rain could experience more significant flash flooding, especially if any “training” storms result in a longer period of heavy rain over a given area.



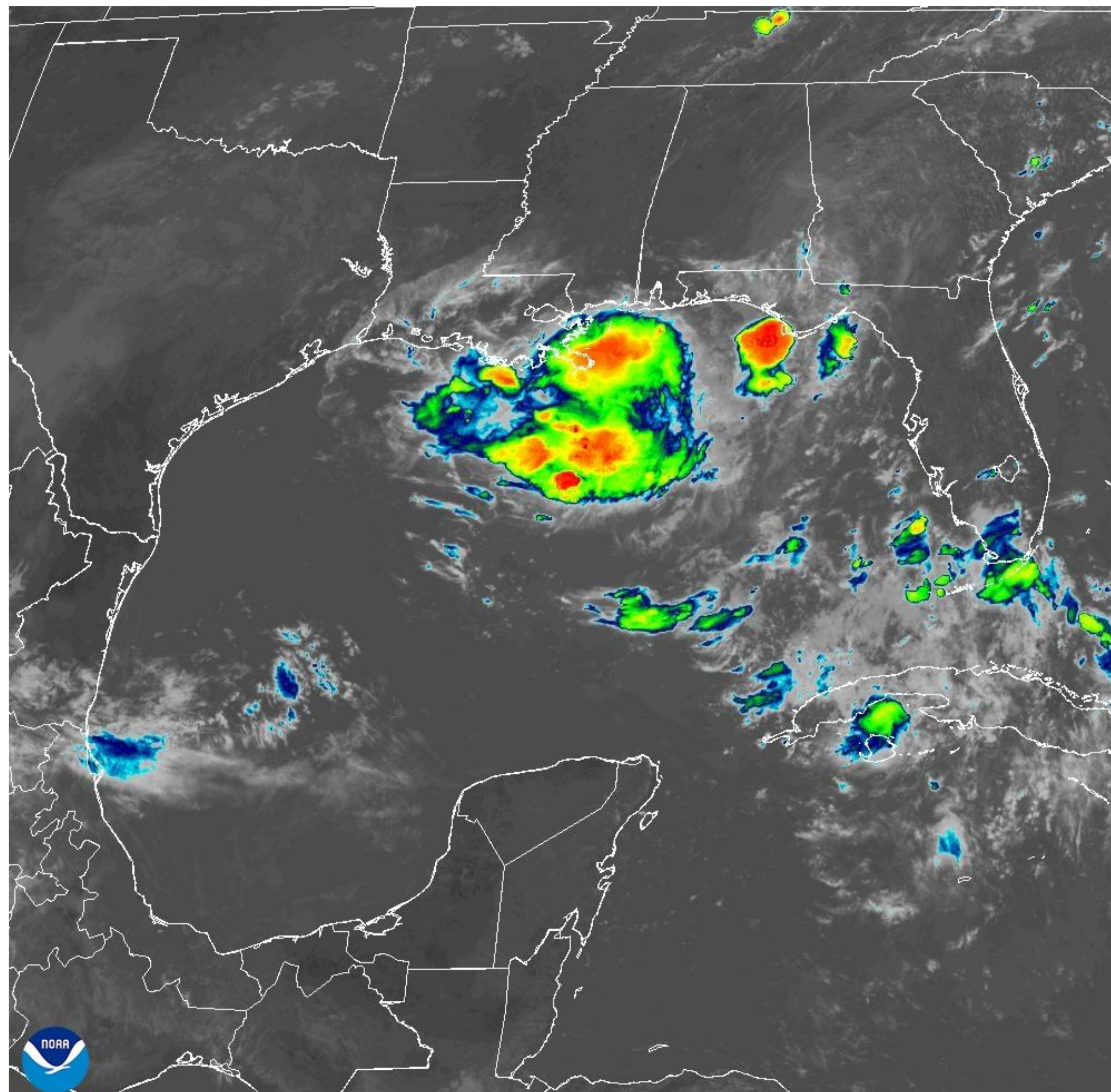
Tropical Weather Outlook



- There is a medium (40%) chance of tropical cyclone development as a disturbance moves through the northern Gulf.
- The system is currently located near Apalachicola and is quite disorganized.
- Even if the system does develop, it is expected to remain weak.



Current Satellite



- The showers and storms currently moving through the local coastal waters are NOT the main disturbance.
- The main disturbance remains disorganized and is located near Apalachicola.

16 Jul 2025 15:31Z - NOAA/NESDIS/STAR - GOES-19 - Band 13 - GA



7-Day Threat Outlook

Day/ Threat	Today	Thu	Fri	Sat	Sun	Mon	Tue
Heavy Rain	Nuissance type flooding possible in urban/low lying/poor drainage areas	Localized of flash flooding possible, esp urban areas	localized flash flooding likely, mainly western areas	Threat will be conditional on how much rain falls Thurs/Fri			
Gusty Winds			Low threat *IF* the system strengthens more than forecast.				
Coastal Flooding			Low threat *IF* the system strengthens more than forecast.				
Heat	Mainly northwestern areas where rain chances are lower				Max heat index 105-110	Max heat index 105-110	Max heat index 105-110

Threat Level

Limited

Elevated

Significant

Extreme



Flash Flood Threat Thursday - Saturday

7AM Thu through 7AM Fri



7AM Fri through 7AM Sat



7AM Sat through 7AM Sun



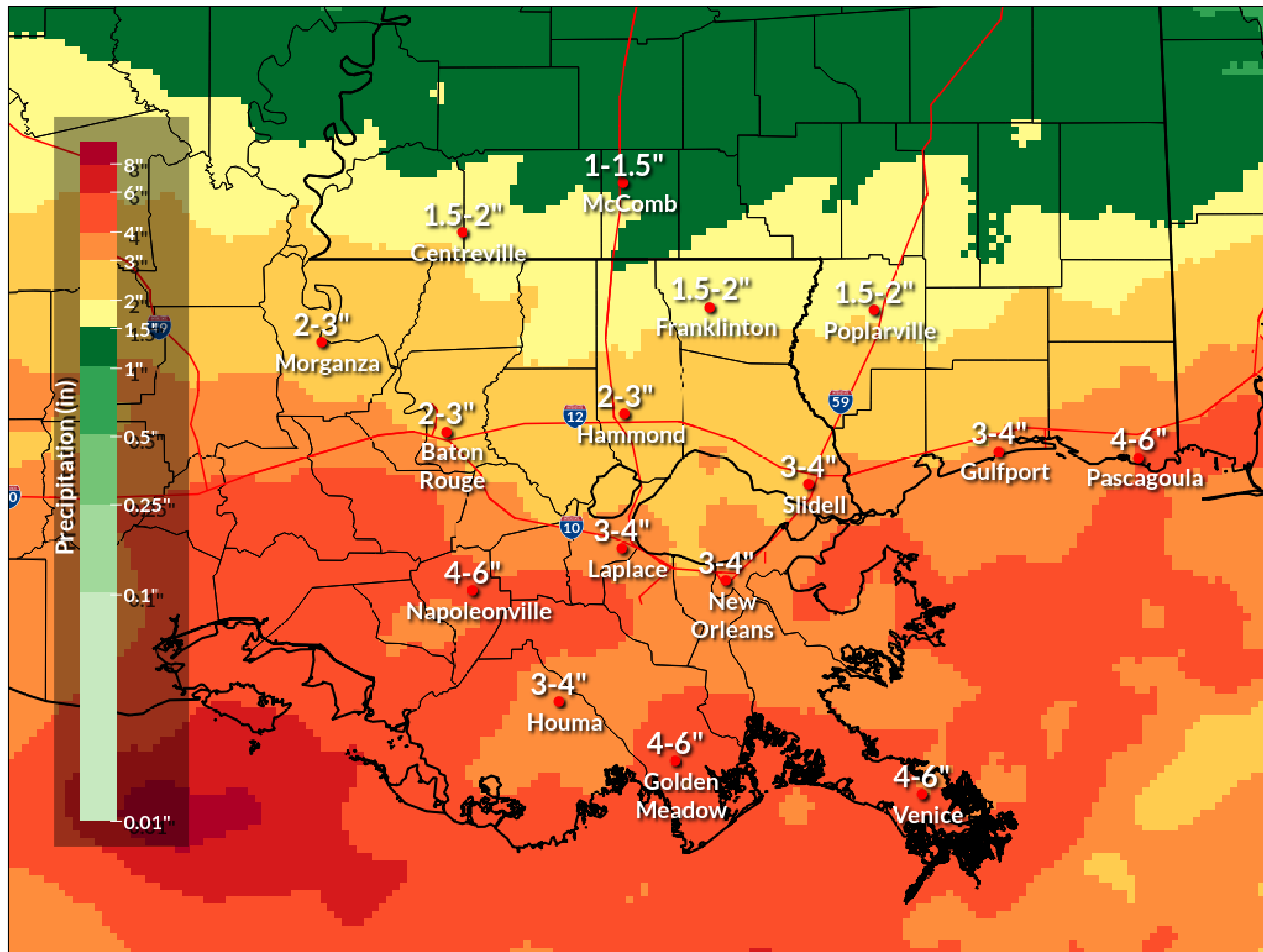
1 - Marginal Localized Flash Flooding
2 - Slight Areas of Flash Flooding, Especially in Urban Areas
3 - Moderate Flash Flooding Likely, Potentially with Significant Impacts
4 - High Max Threat Level Flooding Likely with Significant Impacts

- The heaviest rain is currently forecast Thursday and Friday
- Rainfall rates in excess of 2-3 inches per hour will likely lead to ponding of water in low lying and poor drainage areas at times
- Some roads could become impassable especially around underpasses, and in areas where the heaviest rain falls, a few low lying structures may be flooded as well
- Heavy rain threat over the weekend has diminished somewhat, with the area of greatest threat shifting westward more toward southwestern Louisiana



Storm Total Rainfall Forecast

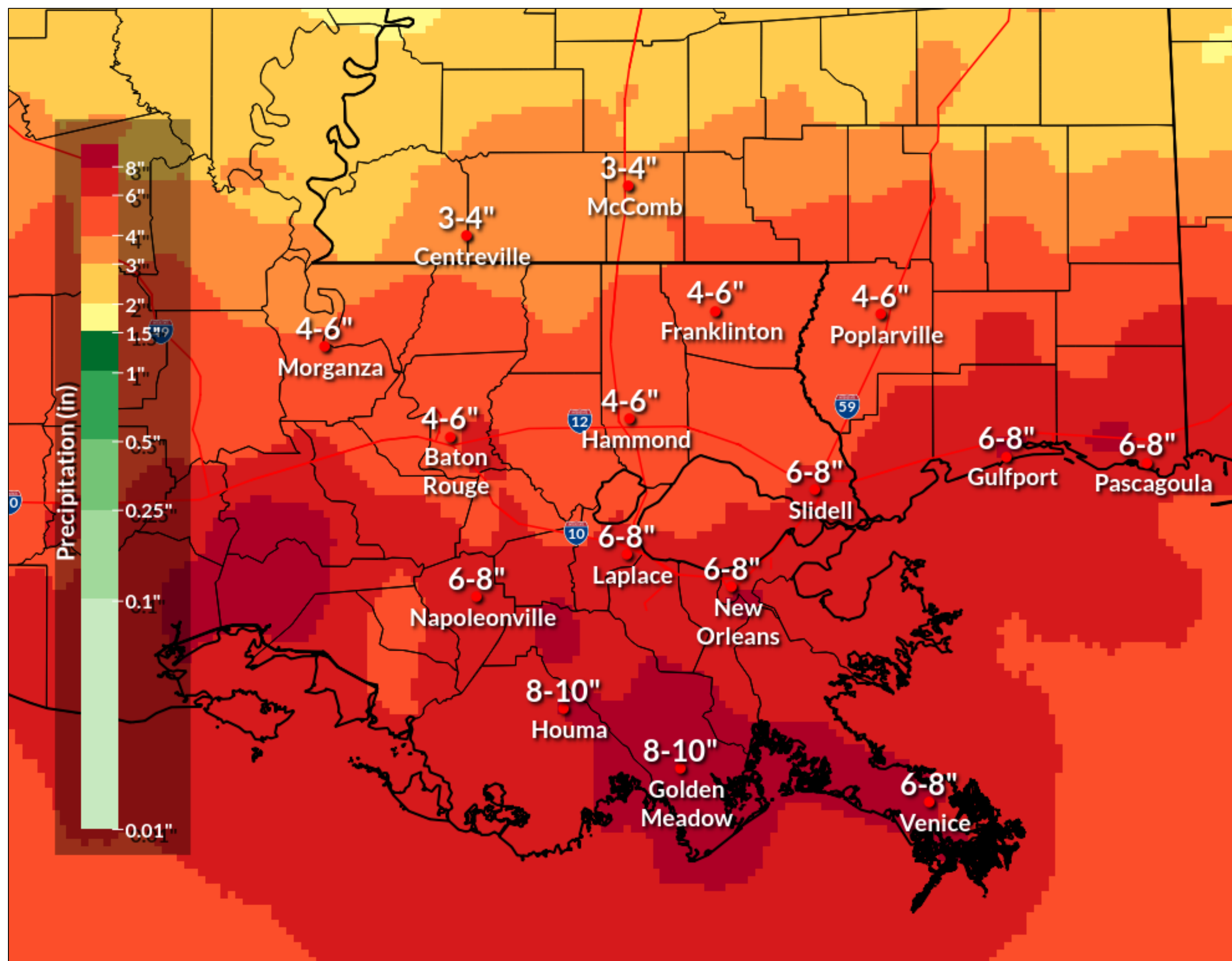
Valid Today through Sunday



- Generally 3-6" of rain is forecast along/south of the I-10 corridor through Sunday with 1-3" forecast north of the I-10 corridor
- The heaviest rain is still forecast Thursday and Friday
- Rain will come in multiple waves, and the specific timing of those waves remains uncertain.
- Locally higher amounts are likely, with some storms producing 2-3" of rain in a relatively short period of time.



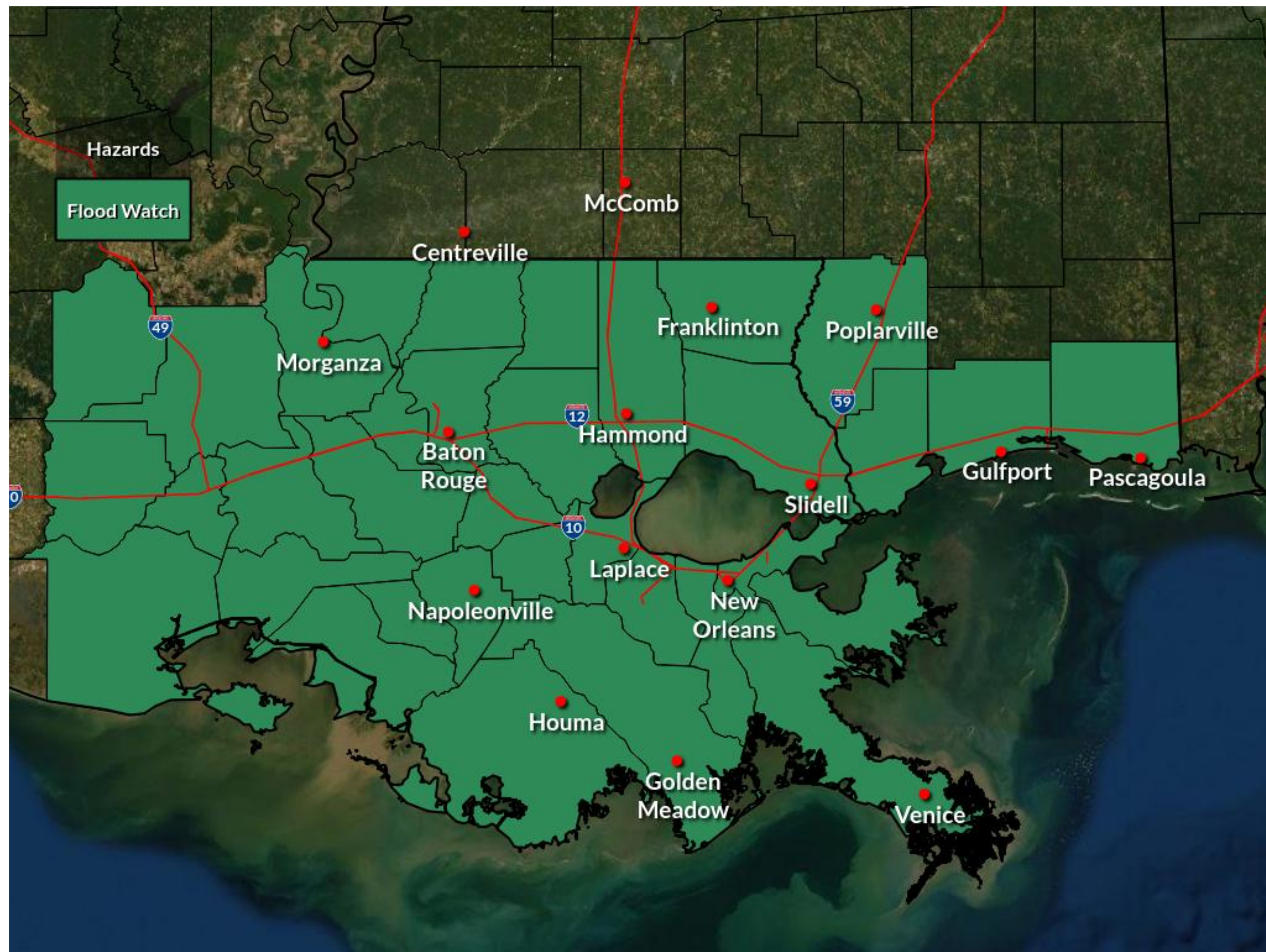
High End Rainfall Forecast



- Taking into account uncertainty and reasonable forecast errors, some locations could see 10+ inches of rain.
- The values in the map represent a reasonable worst case based on the current forecast for each individual location. It is unlikely that these values will be realized everywhere.
- The exact location of the higher bullseye amounts is nearly impossible to forecast in advance.



Flood Watch



- A Flood Watch remains in effect from 1 PM this afternoon through 1AM Saturday.
- The Watch does NOT include SW MS where the threat continues to be lower
- The watch area and timing may be adjusted

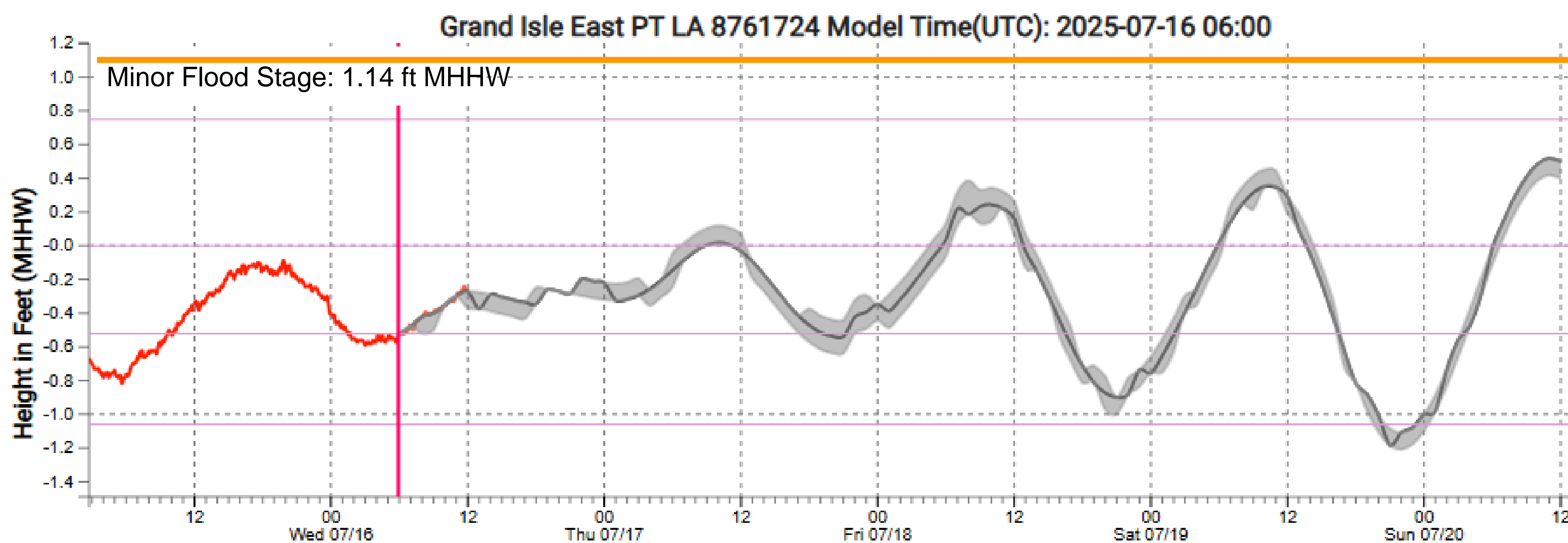
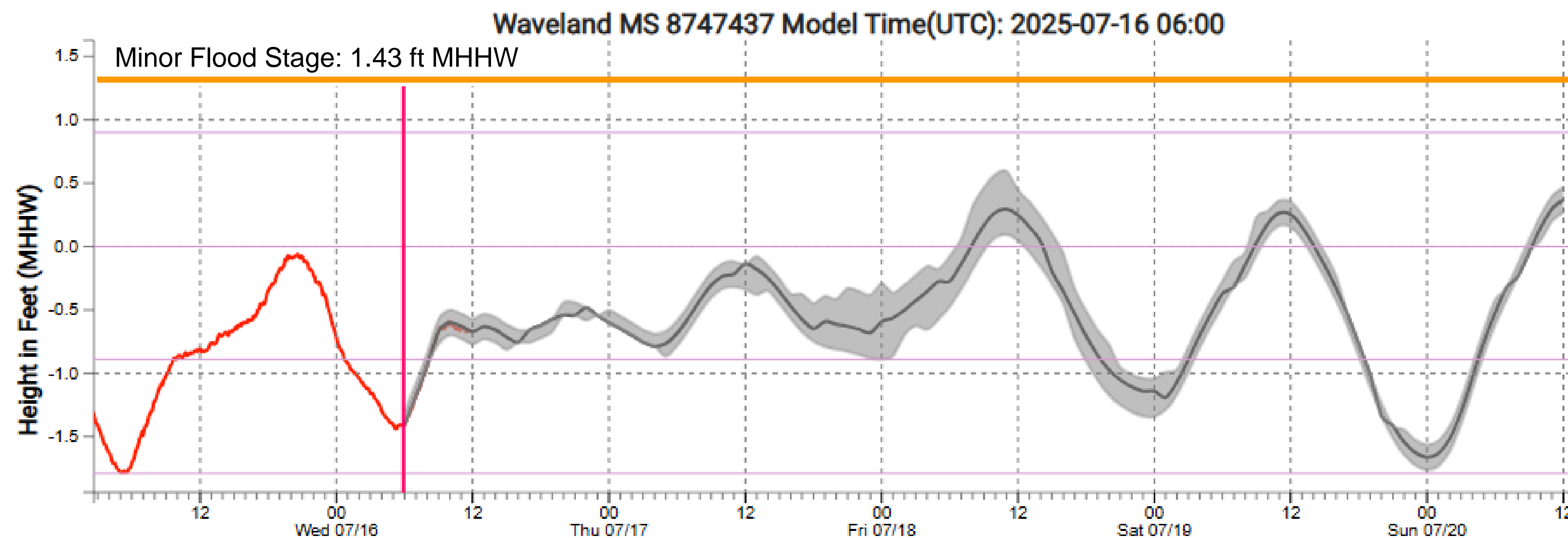


River Flood Threat

- As heavy rain drains into area rivers, expect water levels to rise.
- River crests are extremely sensitive to exactly where and how quickly rain falls, so it is currently too soon to project whether any river flooding will occur.
- With rivers at base flow rates or lower (except for the Mississippi), the threat of significant river flooding is relatively low.



Coastal Flood Threat



- A combination of favorable tide cycles (low ranges) and not a lot of strong wind will result in little to no coastal flood threat.
- Gray shading indicates the uncertainty range of the tide forecast.
- Even the higher end forecasts remain well below minor flood stages.



Summary of Impacts

- There is a medium (40%) chance of tropical cyclone development in the northern Gulf late this week.
- Regardless of development, the system forecast to move through the gulf will bring multiple rounds of heavy rain during the Wed-Sun time frame, with the greatest threat Thursday and Friday.
- High rainfall rates are likely to overwhelm drainage capacity at times, resulting in street flooding and at least a localized flash flooding threat.
- Areas that see the most rain could experience more significant flash flooding, especially if there aren't sufficient breaks between rounds of heavy rain to allow drainage to catch up.



Questions?

Contact WFO New Orleans at
504-522-7330 or 985-649-0429
or through the #wfo-new-orleans-la
channel on NWSChat 2.0 (slack)

*Get the latest forecast and hazard information at
www.weather.gov/neworleans*