



Drought Information Statement for Northeast Illinois and Northwest Indiana

Valid October 7, 2023

Issued By: WFO Chicago, IL

Contact Information: nws.chicago@noaa.gov

- This product is not scheduled to be updated unless drought conditions deteriorate.
- Please see all currently available products at <https://drought.gov/drought-information-statements>.
- Please visit <https://www.weather.gov/lot/DroughtInformationStatement> for previous statements.



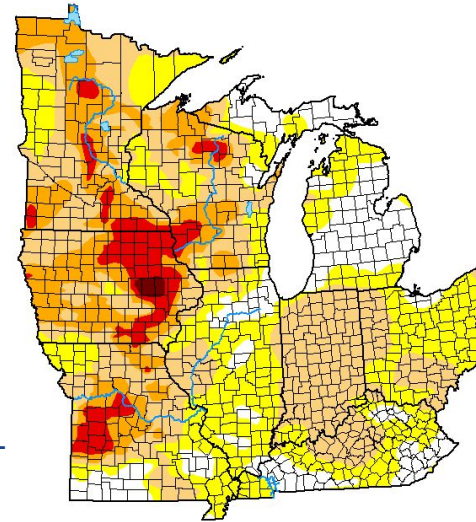


U.S. Drought Monitor

Link to the [latest U.S. Drought Monitor](#) for the Midwest

- Abnormal Dry to Moderate Drought Conditions ongoing across portions of northwestern Illinois and Indiana.
- Drought intensity and Extent
 - D1 (Moderate Drought): Northwestern Indiana along with portions of northwestern Illinois including Ogle, Winnebago, Boone, northwestern DeKalb and northwestern McHenry Counties.
 - D0: (Abnormally Dry): small portions of northern IL surrounding areas of moderate drought .

U.S. Drought Monitor Midwest



October 3, 2023
(Released Thursday, Oct. 5, 2023)
Valid 8 a.m. EDT

	Drought Conditions (Percent Area)					
	None	D0-D4	D1-D4	D2-D4	D3-D4	D4
Current	14.48	85.52	65.96	22.83	6.40	0.35
Last Week 09-26-2023	16.82	83.18	54.98	23.81	6.21	0.13
3 Months Ago 07-04-2023	12.20	87.80	63.54	24.88	4.27	0.00
Start of Calendar Year 01-01-2023	43.25	56.74	28.01	7.67	1.00	0.06
Start of Water Year 09-26-2023	16.82	83.18	54.98	23.81	6.21	0.13
One Year Ago 10-04-2022	36.24	63.76	24.50	9.74	2.95	0.27

Intensity:

None	D2 Severe Drought
D0 Abnormally Dry	D3 Extreme Drought
D1 Moderate Drought	D4 Exceptional Drought

The Drought Monitor focuses on broad-scale conditions. Local conditions may vary. For more information on the Drought Monitor, go to <https://droughtmonitor.unl.edu/About.aspx>

Author:
Brad Pugh
CPC/NOAA



droughtmonitor.unl.edu

Image Caption: U.S. Drought Monitor for the Midwest





Recent Change in Drought Intensity

Link to the latest [4-week change map](#) for the Midwest

- Four Week Drought Monitor Class Change.
 - Drought Worsened: Across northwestern Indiana including Lake, Porter, Jasper, Newton and Benton counties. Additional degradation was also seen in portions of eastern Iroquois and southwestern Livingston counties in Illinois.
 - Drought Improved: Improvement has occurred across most of northern IL due to recent heavier rainfalls.

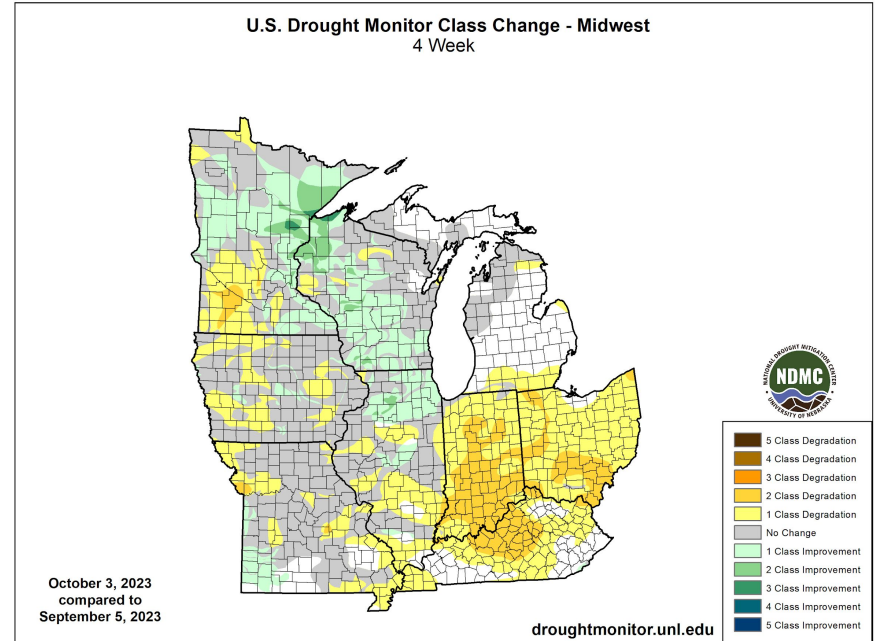


Image Caption: U.S. Drought Monitor 4-week change map for the Midwest





Precipitation

- Over the last 30 days, precipitation (liquid equivalent) was approximately 3-4 inches across northeastern Illinois, and 1 to 3 inches across northwest Indiana
- 30-day precipitation was generally 100 to 150% of the climatic average in Illinois, but only 50 to 75% of normal in much of northwestern Indiana.

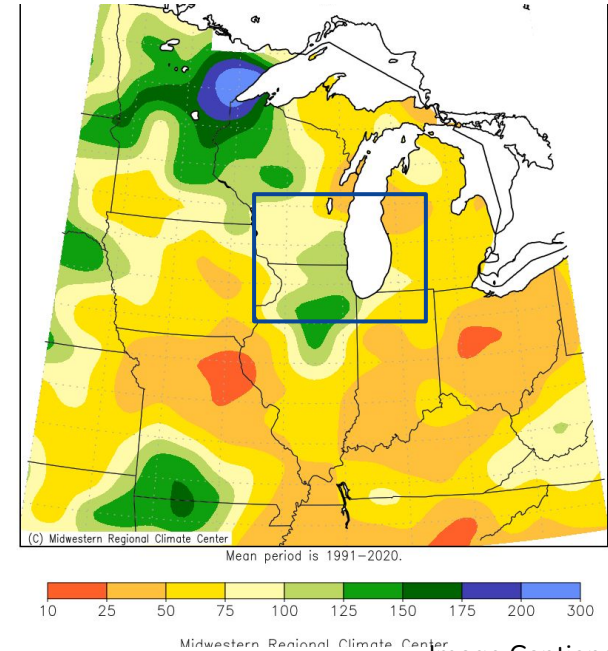
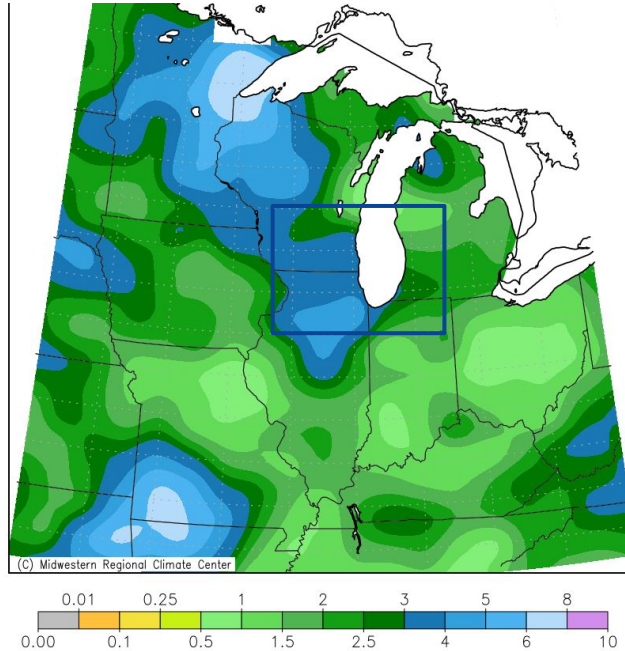


Image Captions:
 Left: 30-day Percent of Climatology Precipitation for the Midwest
 Right: 30-day Precipitation for the Midwest
 Data Courtesy Midwestern Regional Climate Center.





Summary of Impacts

Links: See/submit [Condition Monitoring Observer Reports \(CMOR\)](#) and view the [Drought Impacts Reporter](#)

Hydrologic Impacts

- No known impacts

Agricultural Impacts

- No additional known impacts at this time

Fire Hazard Impacts

- No known impacts

Mitigation Actions

- Please refer to your municipality and/or water provider for mitigation information.





Drought Outlook

The latest monthly and seasonal outlooks can be found on the [CPC homepage](#)

- The monthly drought outlook generally favors the continuation of drought conditions across northwestern Illinois and parts of northwestern Indiana. However, some potential for heavy rain next week could result in some areas of improvement.

U.S. Monthly Drought Outlook Drought Tendency During the Valid Period

Valid for October 2023
Released September 30, 2023

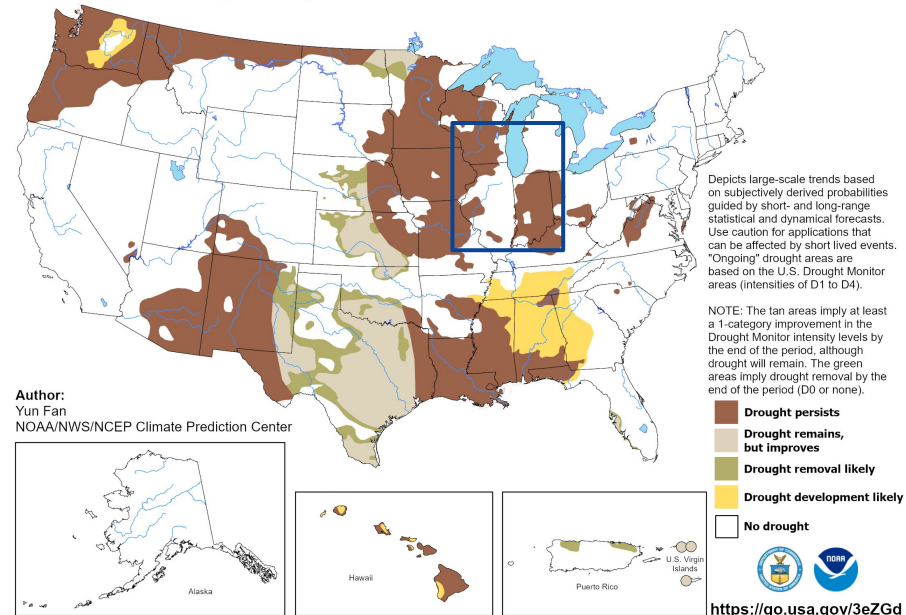


Image Caption:

Climate Prediction Center Monthly Drought Outlook Released September 30, 2023 valid for October 2023

Links to the latest:

[Climate Prediction Center Monthly Drought Outlook](#)

[Climate Prediction Center Seasonal Drought Outlook](#)



National Oceanic and Atmospheric Administration

U.S. Department of Commerce

National Weather Service
Chicago, IL