

National Weather Service - Oxnard

Fire Weather Snooper Primer

Designed by Ryan Kittell
Training Developed By: Curt Kaplan



www.weather.gov/losangeles



NWSLosAngeles

Photo by Eric Boldt

Customize Your Weather.gov

City, ST

Enter Your City, ST or
ZIP Code

☐ Remember Me

Get Weather

[Privacy Policy](#)

NWS Forecast Office Los Angeles, CA

[Weather.gov](#) > Los Angeles, CA

Los Angeles, CA

Weather Forecast Office

[Current Hazards](#) [Current Conditions](#) [Radar](#) [Forecasts](#) [Rivers and Lakes](#) [Climate and Past Weather](#) [Local Programs](#)

Click a location below for detailed forecast.



[Watches,
Warnings &
Advisories](#)

[Beach Hazards
Statement](#)



Last Map Update: Wed, Nov. 13, 2019 at 10:06:10 pm PST

How to get to “Fire Weather Snooper”

NWS Los Angeles Homepage
weather.gov/losangeles

Text Product Selector (Selected product opens in current window)

Latest Text Products Issued by LOX



[Hazards](#)



[Observations](#)



[Marine Weather](#)



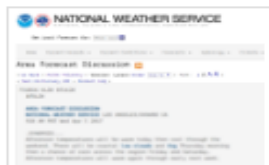
[Fire Weather](#)



[Aviation Weather](#)



[Hydrology](#)



[Forecast Discussion](#)



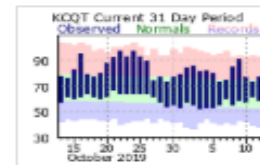
[Graphical Forecasts](#)



[Mobile Devices](#)



[Fast Page](#)



[Recent Area
Temperatures/Precipitation](#)



[Past Weather Data](#)

Customize Your Weather.gov

City, ST

Enter Your City, ST or
ZIP Code

☐ Remember Me

Get Weather

[Privacy Policy](#)

NWS Forecast Office Los Angeles, CA

[Weather.gov](#) > Los Angeles, CA

Los Angeles, CA

Weather Forecast Office

[Current Hazards](#)

[Current Conditions](#)

[Radar](#)

[Forecasts](#)

[Rivers and Lakes](#)

[Climate and Past Weather](#)

[Local Programs](#)

Click a location below for detailed forecast.



[Watches,
Warnings &
Advisories](#)

[Beach Hazards
Statement](#)



NWS Los Angeles Homepage
weather.gov/losangeles

Click on to "[Fast Page](#)"

Text Product Selector (Selected product opens in current window)

Latest Text Products Issued by LOX



[Hazards](#)



[Observations](#)



[Marine Weather](#)



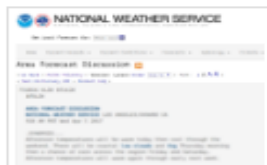
[Fire Weather](#)



[Aviation Weather](#)



[Hydrology](#)



[Forecast Discussion](#)



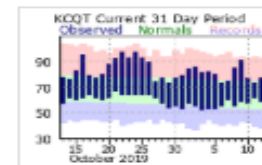
[Graphical Forecasts](#)



[Mobile Devices](#)



[Fast Page](#)



[Recent Area
Temperatures/Precipitation](#)



[Past Weather Data](#)

Fire Weather Snooper Page

- At the bottom of “Fast Page” there will be an area labeled “Additional Links”. Click on “Fire Weather Snooper” to access the page. The link has been added on the bottom of this page for easy access from power-point.

Additional Links

Local Fire Weather Information	NowDATA Climate Search
California Fire Weather Information	River Forecasts & Observations
Fire Weather Snooper	Drought Monitor
Fire Incident Information	Drought Fact Sheet
Fire Boundaries and Information	Mobile Weather Page
USFS Santa Ana Wildfire Threat Index (SAWTI)	Local 3km WRF Model
Debris Flow Fact Sheet	National Hurricane Center
Records and Normals	El Nino Information
CliPlot Summaries	Medium & Long-Range Forecasts
Specific Location Climate Summaries - WRCC	NOAA Contact Points

Click on [Fire Weather Snooper](#)

Fire Weather Snooper Page

- Here is a sample of what Fire Weather Snooper will look like when opened.
 - In this sample I have clicked on the “Wind” category to view descending wind speeds



November 12, 2019 Update. New Help Section. Added New Features in Options Menu. Improved Map.
This version is still under construction. Some features may not work or may change without notice.

Fire Weather Snooper

Updated on Wed Nov 13 2019 22:11 (Pacific Standard Time)											Flirting Stations: 2 Red Flag Stations: 0 Total Stations: 107																								
Station	Time	RH	Wind†	Duration	Temp	Fuel	Elev	Zone	Station	Time	RH	Wind†	Duration	Temp	Fuel	Elev	Zone	Station	Time	RH	Wind†	Duration	Temp	Fuel	Elev	Zone	Station	Time	RH	Wind†	Duration	Temp	Fuel	Elev	Zone
Lake Palmdale	9:55PM	17%	WSW23G36mph	0 2	66	4	2980	CA259	Cuyama Valley	9:43PM	27%	VRB0G5mph	0 1	61	4	2535	CA238	Santa Fe Dam	9:57PM	100%	VRB0G3mph	0 0	54	15	500	CA548									
Poppy Park	9:56PM	24%	SW14G21mph	0 0	62	4	2760	CA259	Lp05 Portable (Fraz	9:46PM	30%	SSE3G5mph	0 0	50	5	7838	CA253	Montecito	9:47PM	70%	VRB0G3mph	0 0	58	10	1619	CA252									
Tepusquet	9:06PM	12%	SSE16G20mph	0 2	65	4	3200	CA252	Montecito #2	9:07PM	93%	ENE2G5mph	0 0	56	16	285	CA239	Malibu Hills	9:56PM	51%	N1G3mph	0 0	63	10	1575	CA246									
Camp 9	9:55PM	16%	S12G16mph	0 2	62	4	4000	CA254	Henninger Flats	9:58PM	16%	NNW3G5mph	0 0	66	5	2800	CA254	Las Tablas	9:07PM	69%	VRB0G3mph	0 0	51	7	967	CA237									
Branch Mountain	9:35PM	17%	S11G15mph	0 0	63	4	3770	CA251	Clear Creek	9:54PM	18%	N3G5mph	0 0	62	4	3000	CA254	La Panza	9:54PM	63%	WSW1G3mph	0 0	46	4	1633	CA237									
Grass Mountain	9:59PM	25%	SSW9G13mph	0 2	56	4	4626	CA254	Little Tujunga	9:54PM	75%	NE4G5mph	0 0	53	5	1390	CA547	Malibu Canyon	9:56PM	94%	VRB0G2mph	0 0	49	15	610	CA547									
Wiley Ridge	9:49PM	45%	ESE7G13mph	0 0	63	10	1625	CA245	Whitaker Peak	9:57PM	34%	W3G5mph	0 1	59	4	4120	CA254	Temescal (Lpf)	9:12PM	89%	VRB0G2mph	0 0	52	7	1124	CA244									
Gaviota	9:09PM	99%	NNW9G12mph	0 0	49	20	878	CA239	Warm Springs	9:53PM	42%	SW3G5mph	0 0	59	4	4930	CA254	Saugus	9:57PM	79%	VRB0G2mph	0 0	55	5	1450	CA288									
Sandstone	10:00PM	12%	SW9G12mph	0 3	65		3110	CA245	Saddleback Butte	9:56PM	41%	ESE1G5mph	0 0	46	3	2590	CA259	Chuchupate	9:22PM	37%	VRB0G2mph	0 0	36	4	5280	CA253									
Mount Wilson	9:49PM	16%	WSW9G10mph	0 0	57		5710	CA254	Los Prietos	9:35PM	84%	VRB0G5mph	0 0	49	7	982	CA236	Rose Valley	9:30PM	54%	WNW1G2mph	0 0	42		3400	CA253									
Palmdale	9:53PM	18%	S10mph	0 0	63		2543	CA259	Del Valle	9:55PM	80%	NE3G5mph	0 0	53	6	1278	CA288	San Luis Harbor	9:49PM	83%	WSW1G1mph	0 0	57		20	CA234									
Vandenberg Portable	9:34PM	86%	NE8G9mph	0 0	55	19	130	CA235	Chilao	9:53PM	16%	W1G5mph	0 0	57	3	5450	CA254	Rose Valley	9:24PM	53%	VRB0G1mph	0 0	42	4	3331	CA253									
San Clemente Nro	9:30PM	91%	WNW5G9mph	0 0	56	19	700	CA287	Ventura County Gover	10:00PM	91%	NW2G5mph	0 0	56		227	CA240	Morro Bay Harbor	9:49PM	87%	N0G1mph	0 0	58		20	CA234									
Tonner Canyon	9:57PM	91%	ENE6G9mph	0 0	57	15	1340	CA548	South Mountain West	10:00PM	93%	NNW2G5mph	0 0	53		660	CA240	Cal State Northridge	10:00PM	83%	VRB0mph	0 0	56		904	CA547									
Cheeseboro	9:38PM	83%	NE7G9mph	0 1	56	7	1707	CA245	Los Angeles	8:00PM	88%	E5mph	0 0	59		1004	CA547	Santa Barbara	10:03PM	81%	Calm	0 0	58		20	CA239									
Leo Carrillo	9:55PM	86%	NNE6G8mph	0 0	56	18	50	CA241	General Wm J Fox	9:56PM	32%	NW5mph	0 0	54		2333	CA259	Oceano County	9:55PM	88%	Calm	0 0	55		14	CA234									
Beverly Hills	9:55PM	100%	NNE7G8mph	0 0	55	14	1260	CA241	Torrance	7:47PM	88%	WSW5mph	0 0	59		102	CA241	Ojai	9:58PM	89%	VRB0mph	0 0	47		745	CA244									
Acton	9:54PM	47%	ENE2G8mph	0 0	47	4	2600	CA254	Oxnard	9:51PM	87%	NNW5mph	0 0	58		43	CA240	Casmalia	10:02PM	92%	Calm	0 0	50		760	CA235									
San Simeon	9:33PM	86%	ESE3G7mph	0 0	54	19	228	CA234	El Monte	5:49PM	83%	SSW5mph	0 0	63		295	CA548	West Big Pine	9:41PM	16%	Calm	0 0	51		6360	CA252									
Catalina Island	9:22PM	53%	SE5G7mph	0 0	61	7	1570	CA287	Camarillo	9:55PM	84%	NE5mph	0 0	58		75	CA240	Tajiguas Landfill	9:59PM	81%	Calm	0 0	51		350	CA239									
Carrizo	10:00PM	17%	W3G7mph	0 1	65		2490	CA251	Lockwood Valley	9:45PM	41%	NW3G4mph	0 0	40		5150	CA253	La Cumbre Peak	10:00PM	9%	Calm	0 0	63		3820	CA252									
Sbdfd Portable 2	9:46PM	100%	E2G6mph	0 0	50	23	1169	CA235	Refugio	9:06PM	66%	NNE2G4mph	0 0	53	8	1465	CA239	Santa Ynez	9:55PM	93%	Calm	0 0	46		673	CA236									
Carpinteria	9:42PM	48%	E3G6mph	0 0	58	6	1770	CA252	Newhall Pass	9:56PM	57%	NNW4G4mph	0 0	60	4	2135	CA288	Avalon Catalina	9:51PM	19%	Calm	0 0	66		1578	CA287									
Sbdfd Portable 1	9:20PM	100%	N4G6mph	0 0	48	11	1538	CA235	Casitas	9:09PM	95%	WSW1G4mph	0 0	50	10	639	CA244	Van Nuys	9:51PM	87%	Calm	0 0	58		797	CA547									
Sedgwick	9:09PM	92%	S1G6mph	0 0	50	10	1402	CA236	Valyermo	9:54PM	28%	VRB0G4mph	0 0	56	3	3780	CA259	Lompoc	9:58PM	90%	Calm	0 0	53		367	CA235									
Sb Botanic Garden	9:24PM	100%	N2G6mph	0 0	52	19	753	CA239	Vandenberg	9:22PM	99%	N1G4mph	0 0	50	27	1017	CA235	Santa Maria	9:51PM	80%	Calm	0 0	56		243	CA235									
Topanga	9:57PM	75%	NE3G6mph	0 0	59	11	1600	CA246	Tanbank	10:01PM	29%	NNW3G4mph	0 0	62	4	2600	CA254	Santa Monica	9:51PM	83%	Calm	0 0	59		174	CA241									
San Rafael Hills	9:56PM	87%	E4G6mph	0 0	58	8	1770	CA547	Claremont	9:55PM	59%	NNE2G4mph	0 0	55	9	1645	CA548	San Luis Obispo	9:56PM	83%	Calm	0 0	55		207	CA234									
Big Pines	9:54PM	27%	NNE1G6mph	0 0	53	4	6964	CA254	San Luis Obispo	9:54PM	86%	WSW2G4mph	0 0	55	17	310	CA234	Brackett Field	8:47PM	100%	Calm	0 0	55		997	CA548									
Whittier Hills	9:57PM	100%	NE2G6mph	0 0	56	20	950	CA548	Paso Robles	9:53PM	83%	SE3mph	0 0	51		810	CA237	Long Beach	9:53PM	84%	Calm	0 0	58		56	CA241									
Mill Creek (Anf)	9:53PM	20%	SW1G6mph	0 0	56	5	5021	CA254	Point Mugu	9:57PM	87%	N3mph	0 0	57		10	CA240	Hawthorne	9:53PM	80%	Calm	0 0	60		62	CA241									
Gray Butte Field	9:58PM	33%	SSE6mph	0 0	51		3028	CA259	Lompoc	9:56PM	86%	NW3mph	0 0	55		89	CA235	Los Angeles	9:52PM	78%	Calm	0 0	61		179	CA241									
Sandberg	9:53PM	33%	WSW6mph	0 0	59		4521	CA254	Burbank	9:53PM	87%	NE3mph	0 0	57		728	CA547	Alamo Mountain	10:00PM	31%	Calm	0 0	48		6700	CA253									
Santa Barbara	9:53PM	84%	NE6mph	0 0	58		10	CA239	San Marcos Pass	9:06PM	86%	SW1G3mph	0 0	52	8	1491	CA239	Avalon	9:49PM	93%	Calm	0 0	51		90	CA287									
Los Angeles	9:53PM	78%	SW6mph	0 0	61		125	CA241	Ozena	9:22PM	33%	ENE1G3mph	0 0	50	3	3690	CA253	Santa Barbara Portre	9:47PM			0 0	67		5300	CA252									
La Granada Mountain	10:00PM	37%	ENE4G6mph	0 0	61		2230	CA253	Figuroa	9:35PM	18%	VRB0G3mph	0 0	60	5	3183	CA252																		

Fire Weather Snooper Wind Example

- Here is a close up look at the different categories. All of the parameters can be viewed in a descending or ascending order if you click on a particular one. The example below is for “winds”. To see strongest winds click on “Wind” click it twice for weakest to strongest winds. Relative Humidity (RH) and Temperature (Temp) categories as well as the others will work the same way.

Fire Weather Snooper

Updated on Wed Nov 13 2019 23:32 (Pacific Standard Time)					Flirting Stations: 0		Red Flag Stations:	
Station	Time	RH	Wind↑	Duration	Temp	Fuel	Elev	Zone
Lake Palmdale	10:55PM	18%	WSW19G32mph	0 2	66	4	2980	CA259
Poppy Park	10:56PM	26%	SSW15G20mph	0 0	62	4	2760	CA259
Tepusquet	11:06PM	16%	S16G18mph	0 2	64	4	3200	CA252
Camp 9	10:55PM	18%	SSE14G17mph	0 1	60	4	4000	CA254

Fire Weather Snooper **Display Map**

- On the options menu (3 bar square) located on the upper right side of the page, if you click on it, another menu will open on the upper left side of the page as seen below. There is a “Display Map” section that you can click on. This will open up an areal view version of all the tables. If the site is highlighted in red or yellow, it will be captured in the view. (See following Page)

Fire Weather Snooper

Updated on Thu Nov 14 2019 04:45 (Pacific Standard Time) Flirting Stations: 0 Red Flag Stations: 0 Total Stations: 107

Station	Time	RH	Wind↑	Duration	Temp	Fuel	Elev	Zone	Station	Time	RH	Wind↑	Duration	Temp	Fuel	Elev	Zone
Poppy Park	3:56AM	23%	WSW13G27mph	0 0	61	4	2760	CA259	Warm Springs	3:53AM	35%	S3G6mph	0 0	56	4	4930	CA254
Gaviota	4:09AM	100%	NNW17G23mph	0 0	50	25	878	CA239	Tanbark	4:01AM	34%	NNW5G6mph	0 0	57	4	2600	CA254

Option Menu

Fire Weather Snooper

Updated on Wed Nov 13 2019 22:11 (Pacific Standard Time) Flirting Stations: 2 Red Flag Stations: 0 Total Stations: 107

Customize the Snooper to your specific needs

Hide Menu Make Permalink Help

Optional Displays

Toggle 24hr Trends ON

Archive:

Month

Day

Year

Hour

 Go

Display Map

Filters

Clear All Filters

Show Only: Red Flag Stations Red Flag & Flirting Stations

Show Only Severity Index(2): 20+ 30+ 40+ 50+ 60+ 70+

Networks:

NWS+RAWS

 Utility Citizen Weather Marine

Stations to Display (start over)

Select by State or NWS Forecast Office

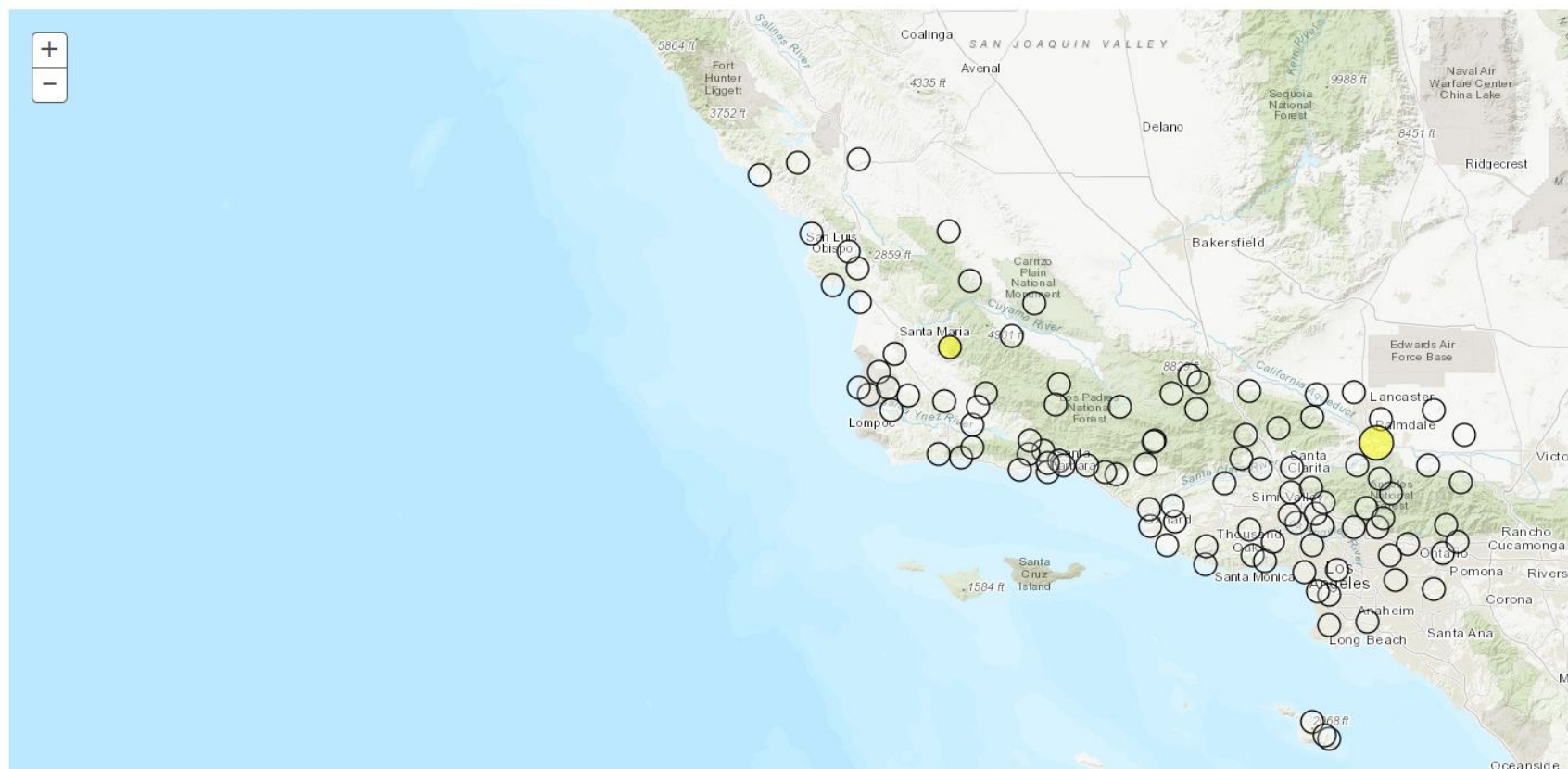
Fire Weather Snooper Display Map cont...

- The size of the circles corresponds to the wind speed. Bigger circles, stronger wind. This happens to be a quiet period, with only a couple of sites flirting with Red Flag Warning conditions (yellow).

Fire Weather Snooper

Updated on Wed Nov 13 2019 22:11 (Pacific Standard Time) Flirting Stations: 2 Red Flag Stations: 0 Total Stations: 107

● Red Flag Station ● Flirting with Red Flag (Size based on wind speed)



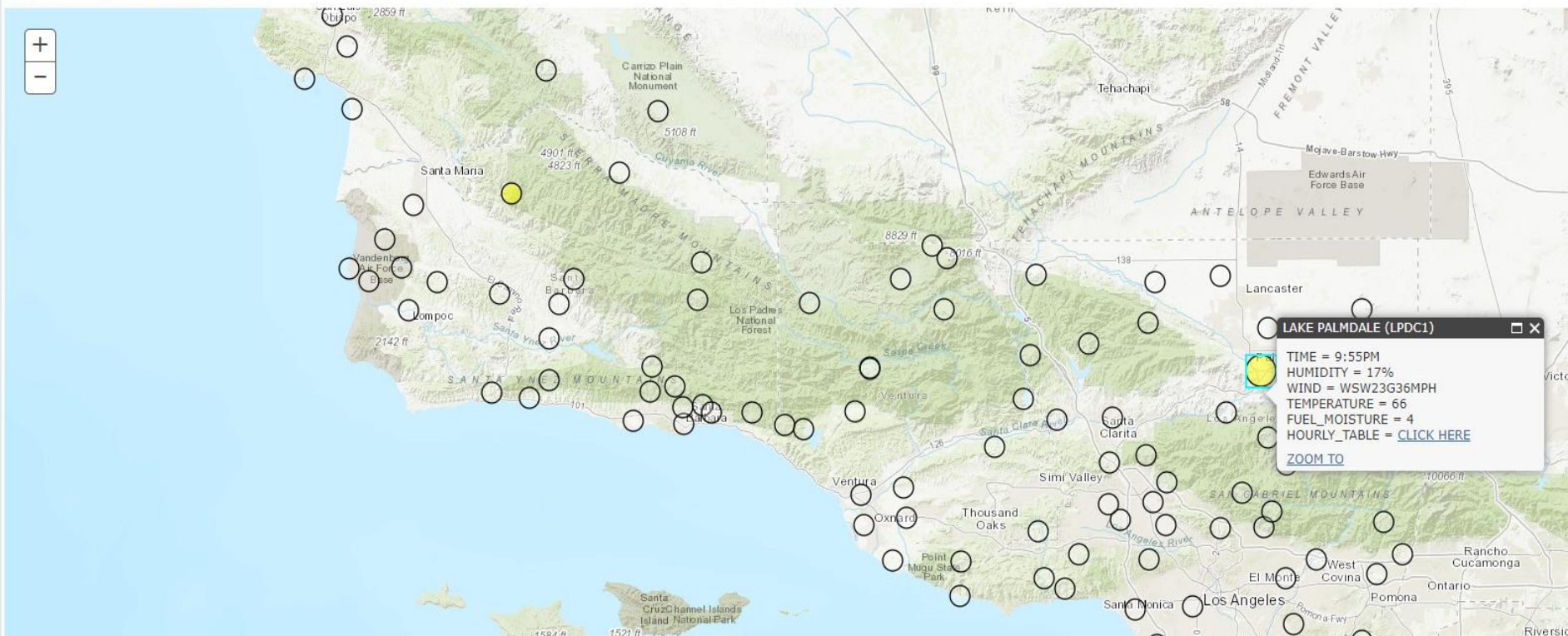
Fire Weather Snooper Display Map cont...

- By clicking on one of the sites, the site ID, along with current weather conditions will pop up. If you want to see the last 24-Hours, then click on the “CLICK HERE” within the box.

Fire Weather Snooper

Updated on Wed Nov 13 2019 22:11 (Pacific Standard Time) Flirting Stations: 2 Red Flag Stations: 0 Total Stations: 107

Red Flag Station Flirting with Red Flag (Size based on wind speed)





Back

LAKE PALMDALE (LPDC1) Severity:63				
TIME	RH	WIND	TEMP	FUEL
09:55PM	17%	WSW23G36mph	66	4
08:55PM	19%	SW23G33mph	66	4
07:55PM	29%	SW24G31mph	65	4
06:55PM	27%	SW23G32mph	66	4
05:55PM	26%	SW21G33mph	68	4
04:55PM	27%	WSW25G34mph	69	4
03:55PM	22%	WSW24G31mph	73	4
02:55PM	13%	W17G26mph	79	4
01:55PM	12%	NNE2G8mph	80	4
12:55PM	14%	NNE3G7mph	77	4
11:55AM	16%	NNE3G6mph	73	4
10:55AM	18%	NNE1G5mph	70	4
09:55AM	20%	N2G5mph	68	4
08:55AM	22%	N3G6mph	64	4
07:55AM	18%	NW1G3mph	67	4
06:55AM	16%	W1G5mph	62	4
05:55AM	16%	SSW3G6mph	61	4
04:55AM	17%	WSW1G5mph	60	4
03:55AM	15%	NW2G9mph	61	4
02:55AM	16%	SSW5G9mph	63	4
01:55AM	17%	SW4G6mph	63	4
12:55AM	18%	SW3G9mph	63	4
11:55PM	19%	SW6G10mph	64	4
10:55PM	21%	SSW2G10mph	64	4
09:55PM	20%	E4G14mph	67	3
County: Los Angeles				
Elevation: 2980				
Zone: LOX259				
Latitude: 34.536950				
Longitude: -118.102331				

After clicking the small box for Lake Palmdale from the previous page, this is what will be displayed. The map is able to zoom in or out.

After mouse-over and clicking to show 24-hours of data for that station, click “Back” to return to full listing.

Fire Weather Snooper Combining Utility Sites with NWS & RAWS sites

- To access both the NWS+RAWS sites and all SCE+PG&E sites, just click on “Utility”. Once it turns **green** you will have access to all 338 sites in the region. These weather sites will show up either as a long list which you can manipulate by strongest winds, lowest RH values, etc... Or you can click on the “Display Map” also circled in RED and see an areal view of all sites which might be easier to identify an area, rather than the ID Site of a Canyon or Road. The following Page will show all of the sites through an areal map.

Fire Weather Snooper

Updated on Fri Nov 15 2019 04:24 (Pacific Standard Time) Flirting Stations: 0 Red Flag Stations: 0 Total Stations: 338

Customize the Snooper to your specific needs
Hide Menu Make Permalink Help

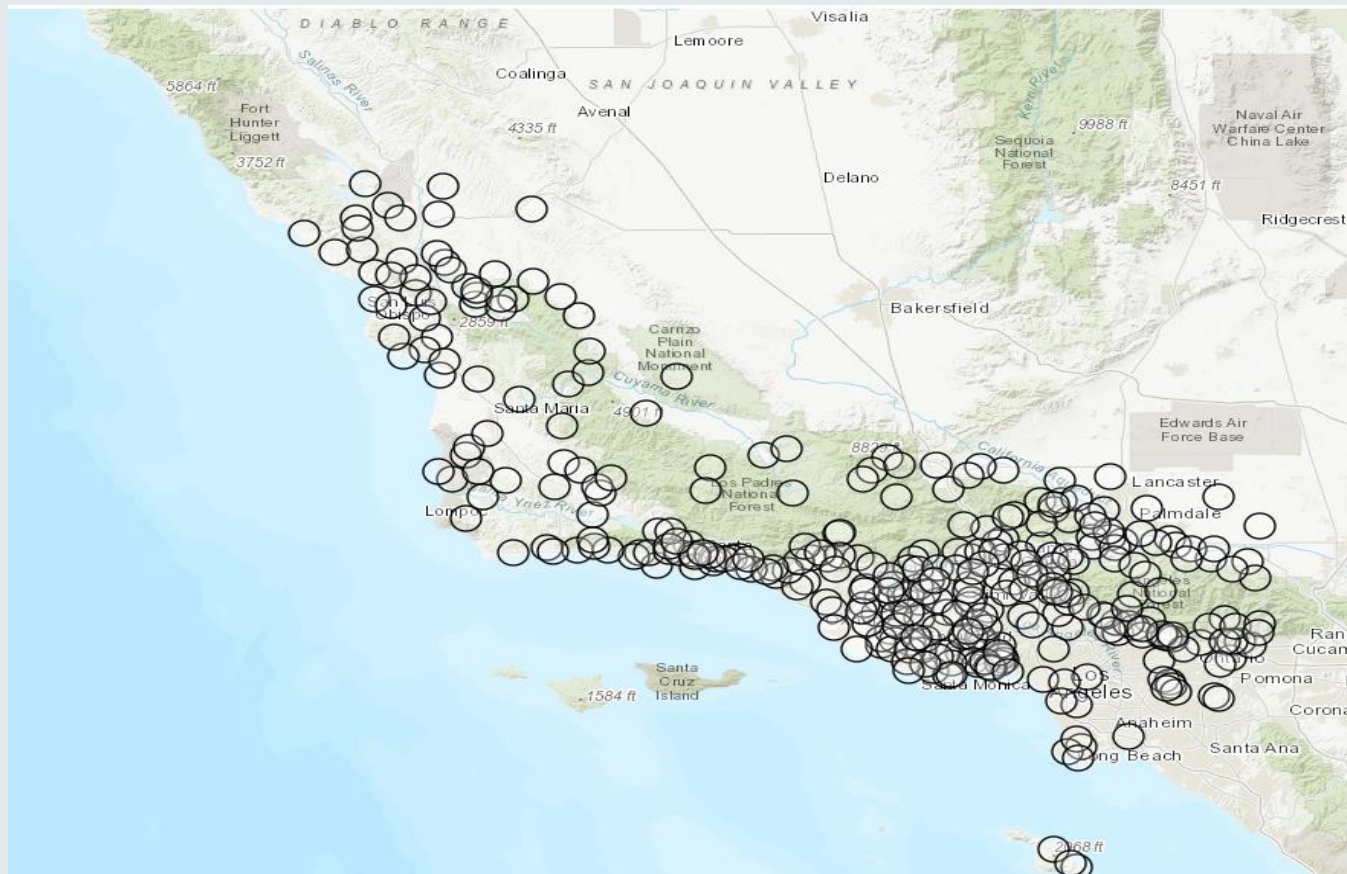
Optional Displays
Toggle 24hr Trends ON
Archive: Month Day Year Hour Go
Display Map

Filters
Clear All Filters
Show Only: Red Flag Stations Red Flag & Flirting Stations
Show Only Severity Index(?) 20+ 30+ 40+ 50+ 60+ 70+
Networks: **NWS+RAWS** **Utility** Citizen Weather Marine

Stations to Display (start over)
Select by State or NWS Forecast Office

Fire Weather Snooper Combining Utility Sites with NWS+RAWS sites

- Here is look at all 338 sites from an areal view. When there are winds involved, the circles will be larger for stronger wind gusts. I will show you an example of the earlier Woolsey Fire from Nov 8th 2018 on the following page. **Yes you can look back at archived events as well with Fire Weather Snooper.**



Fire Weather Snooper Combining Utility Sites with NWS+RAWS sites

- Notice how many red circles are on this map. They are all reaching Red Flag Warning Criteria. Some circles are bigger than others which makes it easy to identify the stronger wind gusts. The following page will show a sample of the list.

Fire Weather Snooper

ARCHIVE: Thu Nov 08 2018 18:00 (Pacific Standard Time) Flirting Stations: 15 Red Flag Stations: 52 Total Stations: 158

Customize the Snooper to your specific needs

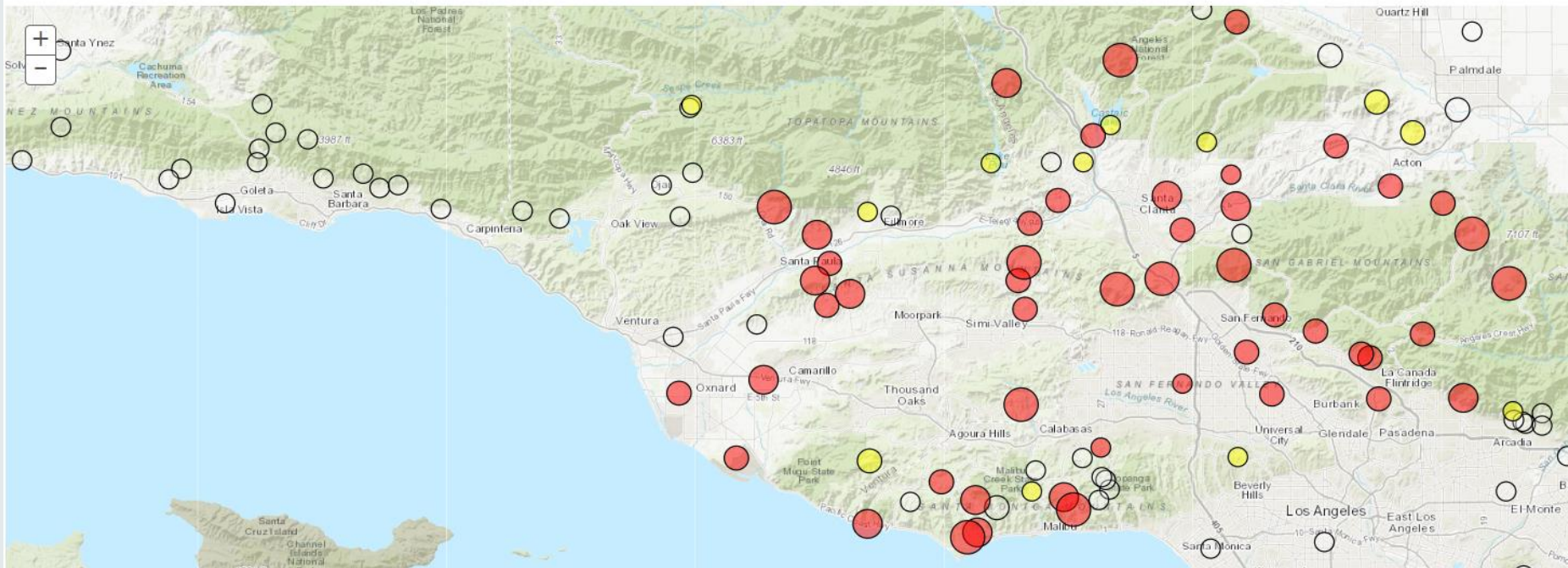
Hide Menu Make Permalink Help

Options Displays
Toggle 24hr Trends ON
Turn Archive OFF Nov 08 2018 18 Go
Display Table

Filters
Clear All Filters
Show Only: Red Flag Stations Red Flag & Flirting Stations
Show Only Severity Index: 20+ 30+ 40+ 50+ 60+ 70+
Networks: **NWS+RAWS** Utility Citizen Weather Marine

Stations to Display (start over)
Select by State or NWS Forecast Office

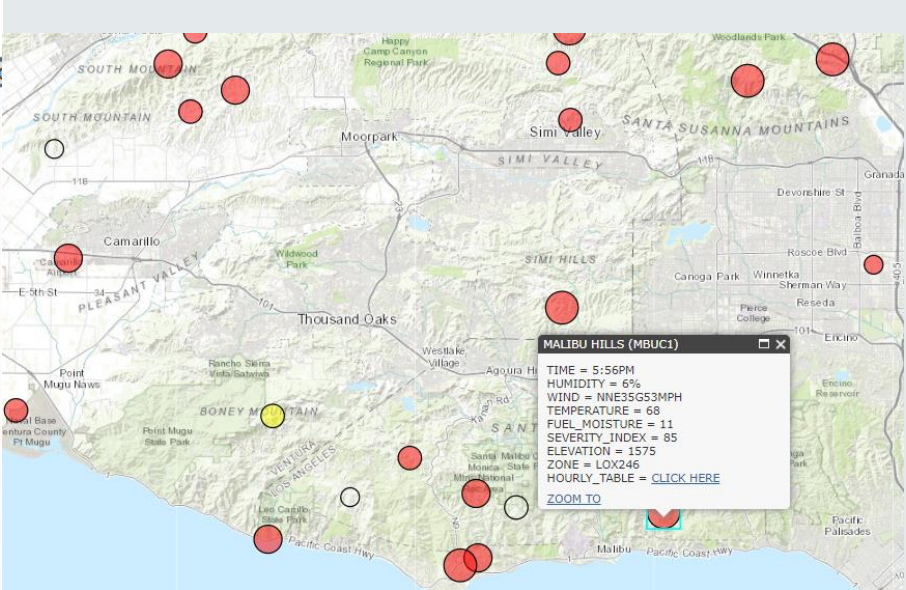
Red Flag Station Flirting with Red Flag (Size based on wind speed)



Fire Weather Snooper

ARCHIVE: Thu Nov 08 2018 18:00 (Pacific Standard Time) Flirting Stations: 15 Red Flag Stations: 52 Total Stations: 117

Station	Time	RH	Wind†	Duration	Temp	Fuel	Elev	Zone
Warm Springs	5:53PM	10%	ENE42G54mph	10 18	53	4	4930	CA254
Sce Oat Mountain	6:00PM	8%	N29G54mph	9 10	56		3450	CA254
Malibu Hills	5:56PM	6%	NNE35G53mph	4 5	68	11	1575	CA246
Chilao	5:53PM	9%	NNE41G52mph	11 11	47	4	5450	CA254
Sandberg	5:53PM	9%	E40G51mph	8 10	53		4521	CA254
Sce Anlauf Canyon	6:00PM	5%	NE28G50mph	5 5	70		1614	CA253
Camp 9	5:55PM	8%	N21G49mph	9 9	54	5	4000	CA254
Newhall Pass	5:56PM	7%	N25G46mph	9 9	64	7	2135	CA288
Mill Creek (Anf)	5:53PM	10%	NNE30G46mph	10 11	48	3	5021	CA254
Cheeseboro	5:38PM	7%	NE28G46mph	8 9	67	9	1707	CA245
Sce Ramirez Canyon	6:00PM	7%	NNE22G46mph	4 4	74		385	CA241
Sce Tapo Canyon	6:00PM	8%	NNE22G45mph	9 10	62		1515	CA245
Sce Escondido Canyon	6:00PM	6%	NNE23G44mph	4 4	73		550	CA241
Sce Saddle Peak	6:00PM	8%	NE30G42mph	4 6	61		2750	CA246
Sce Toland Park	6:00PM	6%	NE28G42mph	9 9	72		880	CA244
Whitaker Peak	5:57PM	9%	NNE16G41mph	7 12	54	4	4120	CA254
Sce Bixby Rd	6:00PM	7%	NNE20G39mph	8 9	71		870	CA245
Sce South Mountain	6:00PM	8%	NE28G39mph	9 9	66		1980	CA245
Camarillo	5:55PM	5%	ENE29G39mph	8 8	77		75	CA240
Henninger Flats	5:58PM	5%	NNW18G39mph	2 3	63	9	2800	CA254
Sce Oak Spring Canyo	6:00PM	7%	ENE20G38mph	9 11	66		1575	CA288
Saugus	5:57PM	8%	NNE21G37mph	9 10	66	4	1450	CA288
Sce Latigo Canyon (B	6:00PM	8%	NE20G36mph	8 8	65		1960	CA246
Leo Carrillo	5:55PM	6%	NE14G36mph	2 2	75	9	50	CA241
Sce Shields Canyon	6:00PM	7%	NE19G35mph	7 8	63		2486	CA254
Los Angeles	5:50PM	5%	N12G35mph	4 4	72		1004	CA547
Sce Highway 126	6:00PM	7%	NE20G34mph	9 10	71		880	CA244
Sce Acton Canyon	6:00PM	11%	NE16G34mph	8 10	55		3515	CA254
Sandstone	10:15AM	19%	N24G34mph	0 1	61		3110	CA245
Sce Antelope Valley	6:00PM	9%	ENE22G34mph	10 10	58		2950	CA254
Sce Golden Valley	6:00PM	8%	ENE17G34mph	9 10	65		1875	CA288
Del Valle	5:55PM	8%	ENE10G34mph	9 10	67	7	1278	CA288
Acton	5:54PM	8%	ENE17G34mph	9 9	60	26	2600	CA254
Lake Palmdale	5:55PM	9%	E17G33mph	6 8	56	5	2980	CA259
Sce Valley View	6:00PM	7%	NNE14G33mph	6 10	69		1180	CA245
Sce Big Tujunga Cany	6:00PM	5%	NE19G32mph	7 7	69		1510	CA547
Point Mugu	5:57PM	10%	NE17G32mph	3 5	75		10	CA240
Burbank	5:53PM	4%	NNE20G32mph	4 4	73		728	CA547
Oxnard	5:51PM	7%	ENE21G31mph	4 4	76		43	CA240
Sce Balcom Canyon	6:00PM	7%	ENE20G31mph	9 9	74		345	CA244
Tanbark	5:01PM	7%	NNE17G31mph	5 5	63	9	2600	CA254
Sce Briggs Terrace	6:00PM	7%	NE11G30mph	6 7	63		2488	CA254
Clear Creek	5:54PM	5%	NE9G29mph	7 11	56	5	3000	CA254
Little Tujunga	5:54PM	3%	NNE14G29mph	4 6	69	5	1390	CA547



From the areal view above, notice that some of the red circles are larger than others. By clicking inside the box "Click Here" a 24-Hour observation list will appear. Here is the last 6 hours shown below



Back

MALIBU HILLS (MBUC1) Severity:85

TIME	RH	WIND	TEMP	FUEL
05:56PM	6%	NNE35G53mph	68	11
04:56PM	7%	NNE32G48mph	69	11
03:56PM	8%	NNE27G42mph	72	12
02:56PM	8%	NNE24G36mph	73	12
01:56PM	12%	NE21G31mph	73	12
12:56PM	47%	E6G21mph	69	13

NOAA's National Weather Service

Here is what Snooper was showing at 6 PM Nov 8th 2018 during the Woolsey Fire. You can also put the cursor over the site and a dropdown box will show last 24-hour observations


Fire Weather Snooper Menu Option “Help” Icon

- On the options menu (3 bar square) located on the upper right side of the page, if you click on it, another menu will open on the upper left side of the page as seen below. There is a “Help” section that you can click on for instructions on how to maneuver this page, and what each product does. The following slide will show you what the page looks like.

Fire Weather Snooper

Updated on Thu Nov 14 2019 04:45 (Pacific Standard Time) Flirting Stations: 0 Red Flag Stations: 0 Total Stations: 107

Station	Time	RH	Wind↑	Duration	Temp	Fuel	Elev	Zone	Station	Time	RH	Wind↑	Duration	Temp	Fuel	Elev	Zone
Poppy Park	3:56AM	23%	WSW13G27mph	0 0	61	4	2760	CA259	Warm Springs	3:53AM	35%	S3G6mph	0 0	56	4	4930	CA254
Gaviota	4:09AM	100%	NNW17G23mph	0 0	50	25	878	CA239	Tanbark	4:01AM	34%	NNW5G6mph	0 0	57	4	2600	CA254



Option Menu

Fire Weather Snooper

Updated on Wed Nov 13 2019 22:11 (Pacific Standard Time) Flirting Stations: 2 Red Flag Stations: 0 Total Stations: 107

Customize the Snooper to your specific needs

Hide Menu Make Permalink **Help**

Optional Displays
Toggle 24hr Trends ON
Archive: Month ▾ Day ▾ Year ▾ Hour ▾ Go
Display Map

Filters
Clear All Filters
Show Only: Red Flag Stations Red Flag & Flirting Stations
Show Only Severity Index(?): 20+ 30+ 40+ 50+ 60+ 70+
Networks: **NWS+RAWS** Utility Citizen Weather Marine

Stations to Display (start over)
Select by State or NWS Forecast Office

[Back to Tables](#)

[Snooper Help](#)

What is the Severity Index?

The severity index is an attempt to boil down the important fire weather parameters into a single value. It is tuned such that it generally falls between 0 and 100, such that 30 is a typical number for a significant observation and 100 is about as bad as it gets. This is primarily intended to help filter the display of stations to only the weather significant ones, which is useful for networks with hundreds of stations.

The equation for the Severity Index (SI) is: $\text{Wind} + 0.75(50 - \text{RH}) + 0.50(T - 70)$

Where: Wind = Highest speed between the sustained and gust. RH = Relative Humidity. T = Temperature
The lowest any of the 3 terms (Wind, $0.75(50 - \text{RH})$, $0.50(T - 70)$) can be is -10. The lowest the SI can be is 0.

What does a "Red Flag" station mean?

A "Red Flag" station means that the observation is hitting Red Flag criteria. These criteria are locally set by the responsible NWS office, and vary by each office. Red Flag conditions generally mean that the weather is favorable for dangerous fire growth and behavior. Other factors are important in assessing the fire growth and behavior risk, including the moisture in the live and dead vegetation (fuels). If the weather is hitting Red Flag criteria, but the fuel moisture is high, the fire growth risk is greatly minimized.

What does a "Flirting" station mean?

A "Flirting" station means that the observation is not hitting Red Flag criteria, but it is close. If the wind is within 5 mph and the humidity is within 5% of criteria, it is considered "Flirting"

What does "Duration" mean?

The "Duration" value contains two numbers. The first number is how many hours in the last 24 that the station has hit Red Flag Criteria. The second number is how many hours in the last 24 that the station has hit Red Flag Criteria OR flirted with it.

What does "Fuel" mean?

The "Fuel" observation value is an approximate moisture content for dead vegetation (fuels) with diameter of 0.25 to 1.00 inches. This would include things like twigs and small branches. Fuel moisture sensors are only available for select stations (RAWS type). The value is the percent weight of water in the fuel compared to the dry fuel weight.

Can I narrow the list of stations to specific counties, zones, or station ID's?

Yes! A user interface is currently being developed to make this easier, but the functionality exists through the actual URL link. Use the following examples as a guide to tune the display to your needs. If you need help please reach out: w-lox.webmaster@noaa.gov

- By Weather Forecast Office: <https://www.weather.gov/lox/fwmV3?wfo=lox>
- By Counties: <https://www.weather.gov/lox/fwmV3?state=CA&county=los%20angeles,ventura> (state id required for county option)
- By Fire Zones: <https://www.weather.gov/lox/fwmV3?firezone=LOX239,LOX252> (wfo id required before each zone code)
- By Public Zones: <https://www.weather.gov/lox/fwmV3?zone=CA041,CA552,CA043>
- By States: <https://www.weather.gov/lox/fwmV3?state=AZ,NM>
- By GACC: <https://www.weather.gov/lox/fwmV3?gacc=NOCC>
- By Stations: <https://www.weather.gov/lox/fwmV3?stns=MTIC1,KSBA,MOIC1,MPWC1,RHWC1,GVTC1>

- NOTE: Which red flag criteria is used is set by the location of each individual station.

Can I just show red flag stations?

Yes! There is a filter in the option menu, or you can add "&rflonly=1" to the URL for only Red Flag stations, or "&rflonly=2" for only Red Flag and Flirting stations.

Examples:

- <https://www.weather.gov/lox/fwmV3?wfo=lox> (Normal)
- <https://www.weather.gov/lox/fwmV3?wfo=lox&rflonly=2> (Red Flag and Flirting Only)

There is a lot you can do with **Fire Weather Snooper** by reading this “Help” section, you should be able to perform many functions

NWS Los Angeles Mobile Site

<https://www.wrh.noaa.gov/lox/mobile>

Local Mobile Web Page: You can also receive many of our web products and services in a graphic lite, fast loading, and small download size version. Page also includes link to the Snooper, with all the same features as the desktop version



Thank you!

If there are any questions, please email to
Ryan.Kittell@noaa.gov

