

Severe Thunderstorms

June 27th, 2010

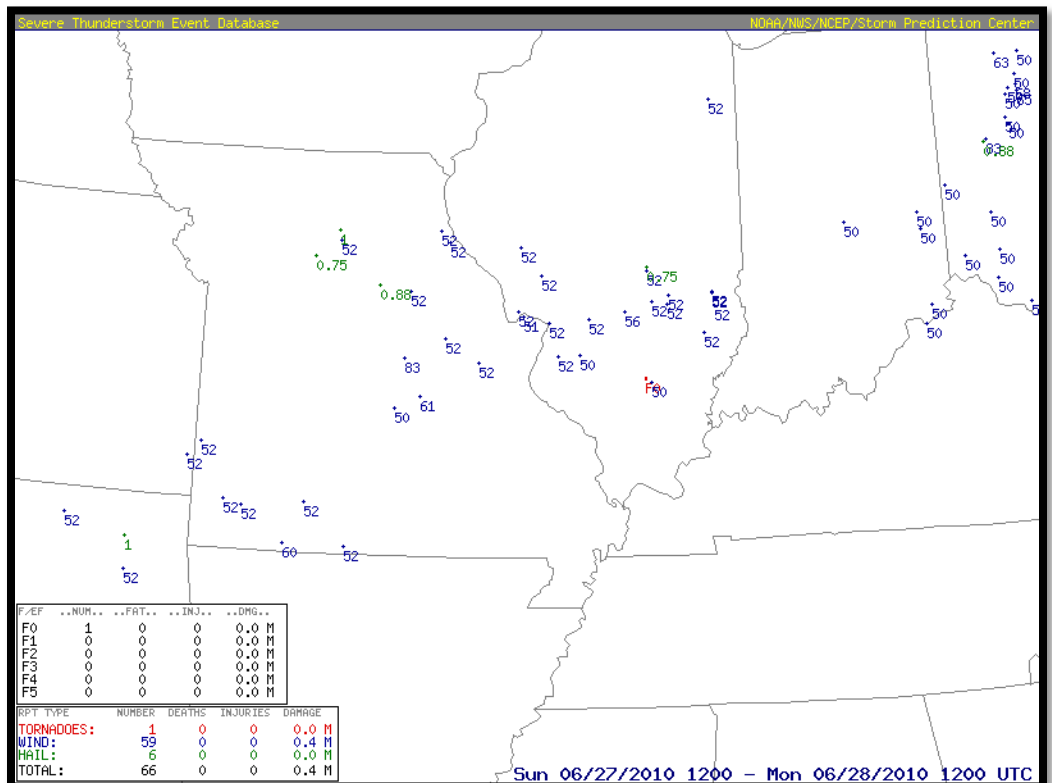
Overview

The National Weather Service conducted a damage survey over parts of west-central Osage County and determined that the tree and structural damage that occurred on June 27th, 2010 between 620 and 630 PM CDT was caused by a combination of damaging downburst winds and microbursts from a severe thunderstorm.

The damage area started one quarter mile east of County Road 608 near the Maries River or about 2.5 miles south southwest of Loose Creek, Missouri. The roof of one machine shed was uplifted to the southeast on a farmstead near County Road 608. Tree damage was confined at three locations along the Maries River. One area of tree damage extended from the river up to the ridge axis across the river. Several large oak and pecan trees were damaged along the Maries River.

Other nearby tree damage due to downbursts and microbursts occurred along Brush Creek Hollow about 2 miles south-southwest of Loose Creek. Several large oak trees over 100 years old were uprooted due to an intense microburst. Surface wind gusts were estimated between 85 and 95 mph.

Further east towards the south end of County Road 603, near Brush Creek, a second machine shed was completely destroyed with debris from the machine shed laid to the west southwest. As the machine shed started to lift to the west, five occupants moved inside a large pickup truck within the machine shed. None of the occupants were injured. A nearby house approximately 50 yards to the south was not damaged. Approximately 100 to 150 yards northeast and east of the location, several large hardwood trees were uprooted and were also lying to the west and southwest. This is an interesting area in which the tree and machine shed damage laid to the west and southwest and occurred immediately on the back side (west side) of the severe thunderstorm. This is an uncommon type of damage pattern. Surface winds were estimated between 70 and 90 mph. The final area of tree damage occurred 2.2 miles southeast of the town of Loose Creek along County Road 602. This road was along a ridge axis and several very large oak trees were uprooted to the northeast. The total tree and structural damage area extended 5 miles in length and 1 mile in width.



Damage Photos



Machine Shed Destroyed South of Country Road 603



Hardwood Tree Damage at Maries River

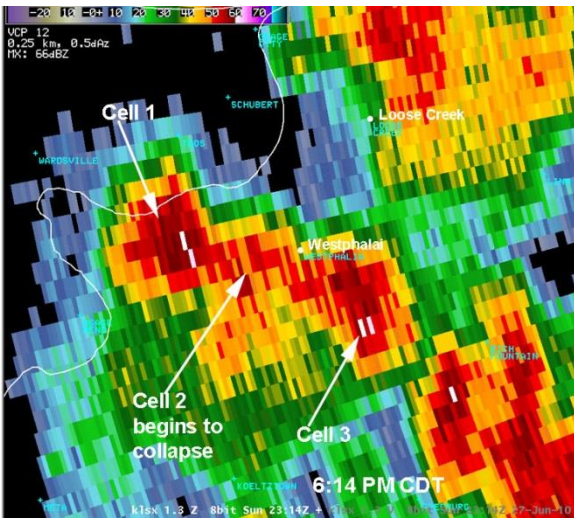
100 Year-Old Oak Trees Uprooted



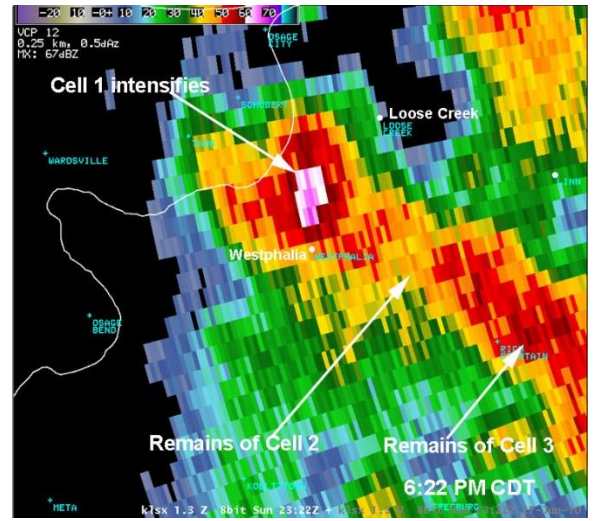
Large Hardwood Tree Uprooted



Radar Data

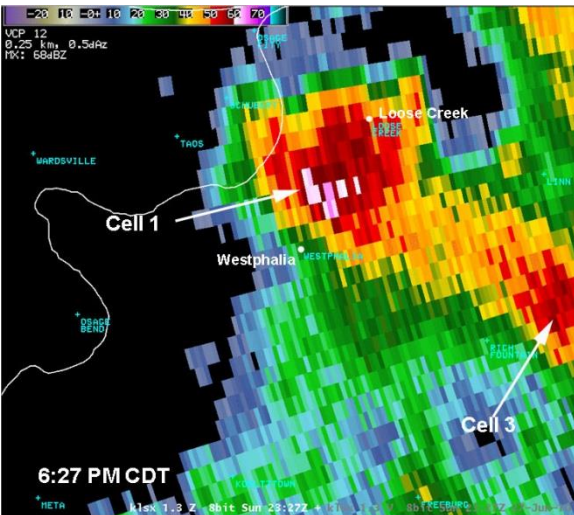


6:14 PM CDT

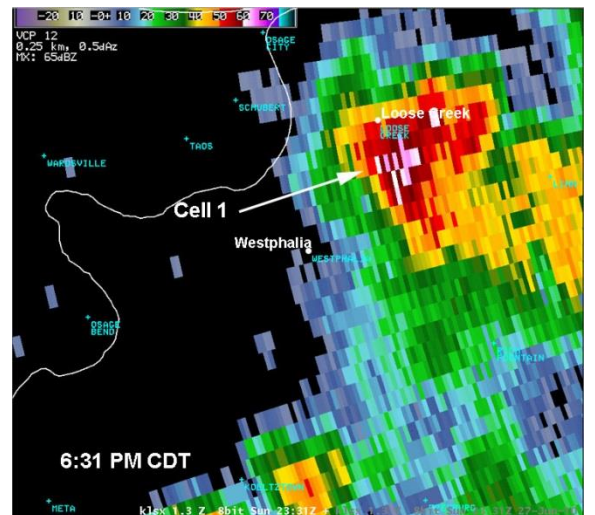


6:22 PM CDT

6:27 PM CDT



6:31 PM CDT



Please note that while the severe weather data presented in this event synopsis has been quality controlled, it is still considered unofficial. Official reports & statistics for severe weather events can be found in the **Storm Data** publication (<http://www.ncdc.noaa.gov/IPS/sd/sd.html>) or **Storm Events Database** (<http://www.ncdc.noaa.gov/stormevents/>), available from the National Centers for Environmental Information (NCEI) web page [formerly the National Climate Data Center (NCDC)].

More detailed tornado track information can be accessed using the National Weather Service Damage Assessment Toolkit for all tornadoes beginning in 2012. <https://apps.dat.noaa.gov/StormDamage/DamageViewer/>

Any questions regarding this event review should be address to w-lsx.webmaster@noaa.gov