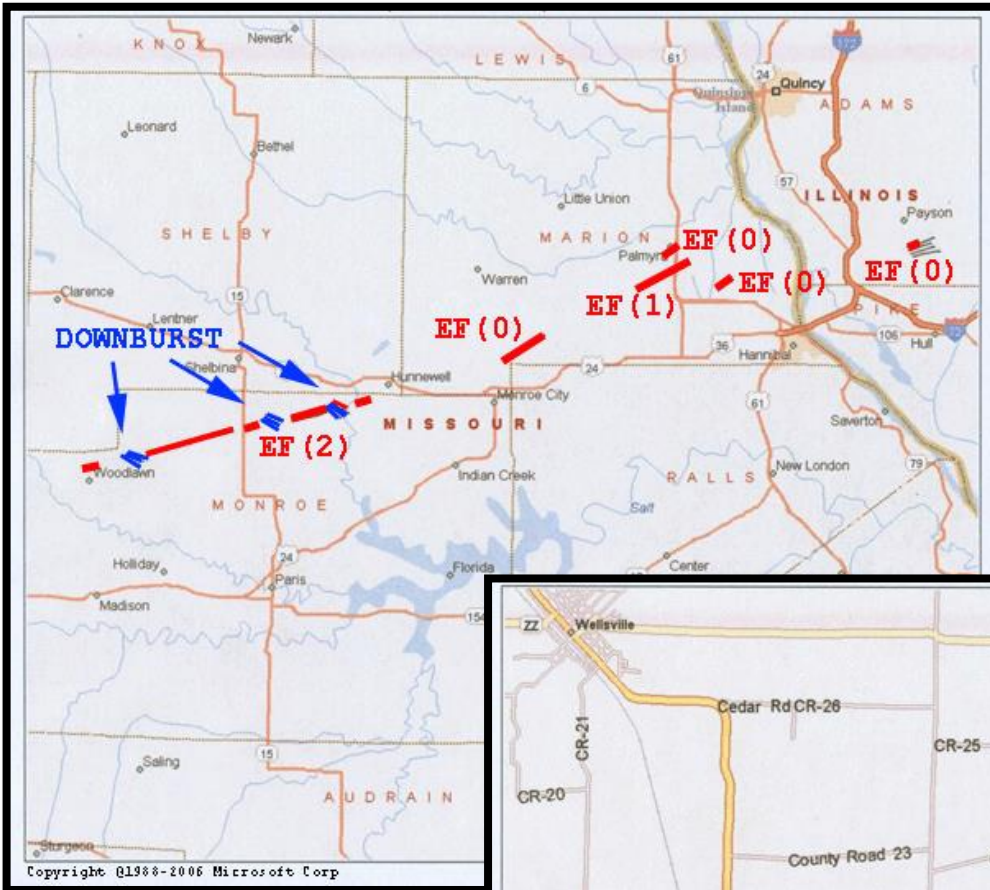


Tornado and Wind Event Over Northeast Missouri and South Central Illinois

October 2nd, 2007

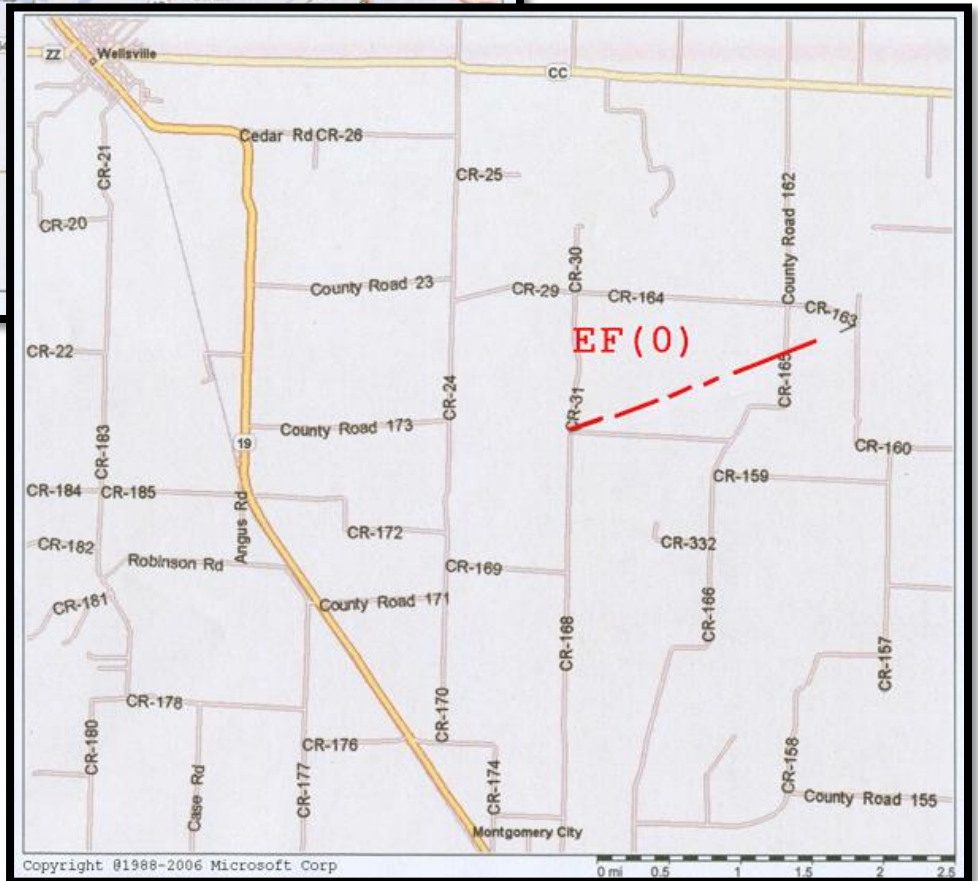
Overview

Several low-topped supercells produced 8 tornadoes and straight line wind damage from central and northeast Missouri to west central Illinois during the evening of October 2nd, 2007. This activity all occurred ahead of a cold front that moved across the region that evening and overnight.



Detailed damage map of the wind and tornado tracks in Monroe, Marion and Adams Counties on October 2nd, 2007.

Detailed damage map of the tornado track in Montgomery County on October 2nd, 2007.



Damage Surveys

Monroe County (Missouri)

The tornado first touched down briefly around 445 PM about a mile north northeast of Woodlawn on County Road 1109 knocking down a few trees. It lifted and continued to move to the northeast, touching down again on Highway A, just south of the intersection of County Roads 182 and 284. It damaged more trees as it travelled to the northeast. It then struck a residence just northwest of the intersection of Highway 15 and Highway CC. The house had half of its roof removed with debris and insulation blown 100 yards northeast, into a grove of trees. Numerous trees were damaged at this location, including a 5 foot diameter tree that was twisted and snapped off five feet above the ground. The tornado briefly lifted again before touching down near County Road 317, between County Roads 394 and 390. As it travelled to the northeast, it produced its greatest damage when it struck a single wide mobile home just east of Highway PP, approximately 1.7 miles south of US Highway 36. The mobile home was completely destroyed and the 85 year old male occupant of the mobile home suffered severe injuries. The tornado then lifted and dissipated. The path length of the tornado was 15.1 miles while the max path width was 100 yards. The tornado was rated as an EF2.



EF1 Tornado damage near the intersection of Highways CC and 15 in Monroe County.

EF2 Tornado damage on Highway PP in Monroe County. Single wide mobile home completely destroyed.



Damage Surveys

Marion County (Missouri)

A damage assessment conducted by National Weather Service meteorologists confirmed four tornado touchdowns in Marion County.

The first tornado touched down in a corn field just to the east of Highway Z, half a mile north of County Road 244. The tornado travelled to the northeast, flattening another corn field one mile north of County Road 244 on County Road 245. Also, nearby trees along the east side of County Road 245 were snapped near the base of the trees and numerous large tree limbs were blown down. The tornado then lifted and dissipated. The path length of the tornado was 1.2 miles while the max path width was 50 yards. The tornado was rated as an EF0.

A second tornado touched down half a mile east of the intersection of Highway F and County Road 255, about one and a quarter miles east of Woodland. Several trees and large tree limbs were blown down at this location. The tornado traveled to the northeast, damaging a machine shed near the intersection of County Roads 279 and 264. It continued to move to the northeast and skipped over a tree line before moving into the southern part of Palmyra where it damaged the Consolidated Machine & Welding Company on US Highway 61. Three of the four large corrugated steel buildings were severely damaged. One semi trailer was lifted and dropped onto 2 other trailers at this location. It then damaged a church and structures around the church. Further northeast a trucking company sustained minor building damage. From this point it crossed US Highway 61, where it picked up a car that was traveling south on the highway and flipped it twice. Fortunately the driver was wearing her seatbelt and only sustained minor injuries. It then caused additional tree damage a quarter of a mile northeast of the highway before lifting and dissipating. The path length of the tornado was 3.8 miles and the max path width was 100 yards. The tornado was rated as an EF1.

The third tornado initially touched down near the intersection of West Church Street and South Breckenridge Avenue in Palmyra with minor tree damage. As the tornado travelled to the east northeast, additional tree damage occurred in a residential area near the far western end of West Lafayette Street. The tornado then caused damage to 3 large corrugated buildings on South Bradley Street between West Lafayette Street and West Main Cross Street. Tree and power line damage was also observed in this area. The tornado caused minor roof damage to a store on Main Street before lifting and dissipating. The path length of the tornado was 0.7 of a mile and the max path width was 60 yards. The tornado was rated as an EF0.

The fourth tornado in Marion County touched down a quarter of a mile southeast of the intersection of County Roads 405 and 404. It travelled to the northeast for half a mile before lifting and dissipating. It only knocked down a few trees and tree limbs. No structural damage occurred. The path length of the tornado was half a mile and the max path width was 40 yards. The tornado was rated as an EF0.



Additional tornado damage in same location, south of Palmyra, Missouri.

Tornado damage just south of Palmyra, Missouri (Marion County), near Business 61 and U.S. Highway 61.



Damage Surveys

Adams County (Illinois)

A tornado briefly touched down in a field just northeast of the intersection of County Roads 1000E and 200N. The corn field was totally flattened. The path length of the tornado was 0.04 of a mile and the path width was 40 yards. The tornado was rated as an EF0.

Lincoln County (Missouri)

A tornado briefly touched down around 5 miles south southeast of Hawk Point, near Big Creek on North Rock Church Road. It damaged half a dozen trees. The tree tops were sheared off with tree limbs up to 2 feet in diameter thrown in different directions. The path length of the tornado was 0.05 of a mile and the max path width was 30 yards. The tornado was rated as an EF0.

Montgomery County (Missouri)

The tornado touched down near the intersection of County Roads 165 and 168. It travelled to the northeast destroying one outbuilding and damaging or destroying numerous trees. Also, the southeast corner of a hog confinement building was damaged, leading to a partial roof collapse. Some of the debris was thrown a third of a mile to the northeast. An unoccupied car was also damaged. The tornado lifted and dissipated on County Road 160 about a quarter of a mile south of County Road 164. The path length of the tornado was 2.1 miles and the max path width was 40 yards. The tornado was rated as an EF0.



Large outbuilding completely destroyed by EF0 tornado in Montgomery County.

Please note that while the severe weather data presented in this event synopsis has been quality controlled, it is still considered unofficial. Official reports & statistics for severe weather events can be found in the **Storm Data** publication (<http://www.ncdc.noaa.gov/IPS/sd/sd.html>) or **Storm Events Database** (<http://www.ncdc.noaa.gov/stormevents/>), available from the National Centers for Environmental Information (NCEI) web page [formerly the National Climate Data Center (NCDC)].

More detailed tornado track information can be accessed using the National Weather Service Damage Assessment Toolkit for all tornadoes beginning in 2012. <https://apps.dat.noaa.gov/StormDamage/DamageViewer/>

Any questions regarding this event review should be address to w-lsx.webmaster@noaa.gov