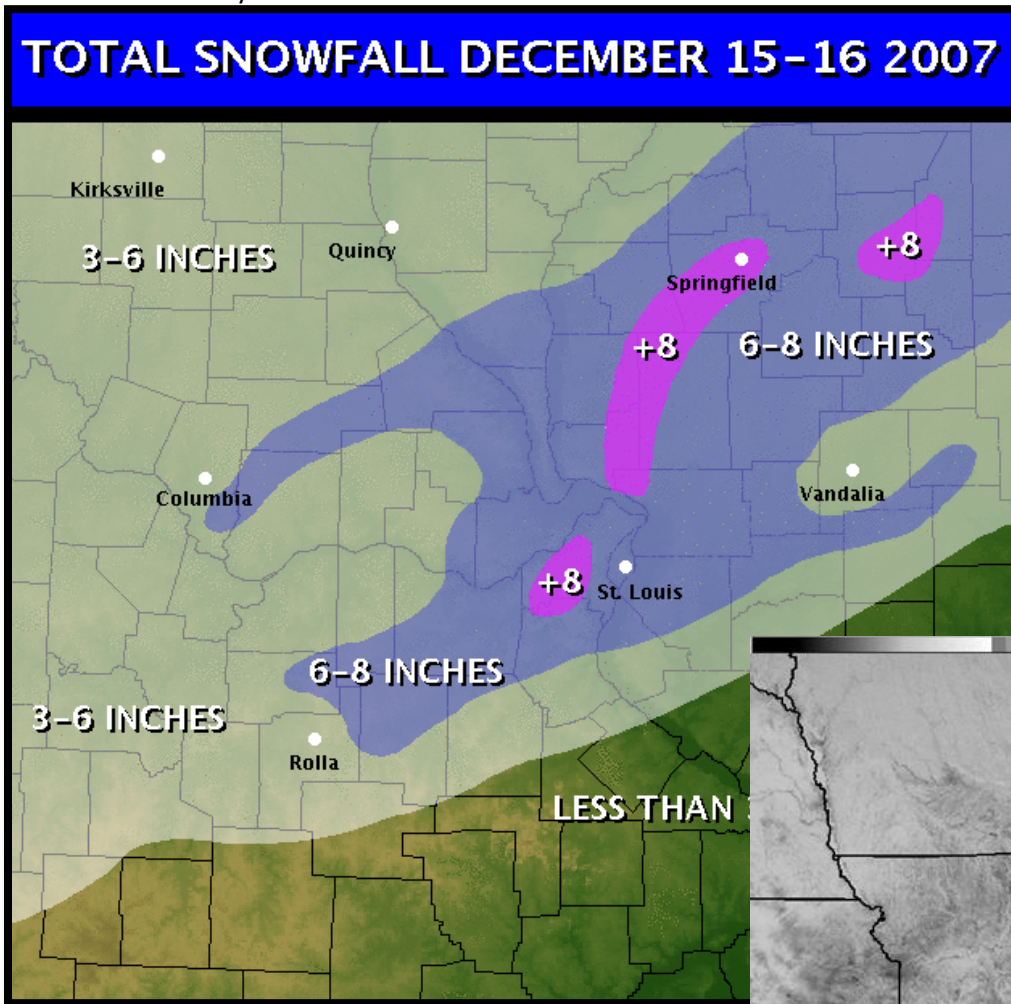


Winter Storm

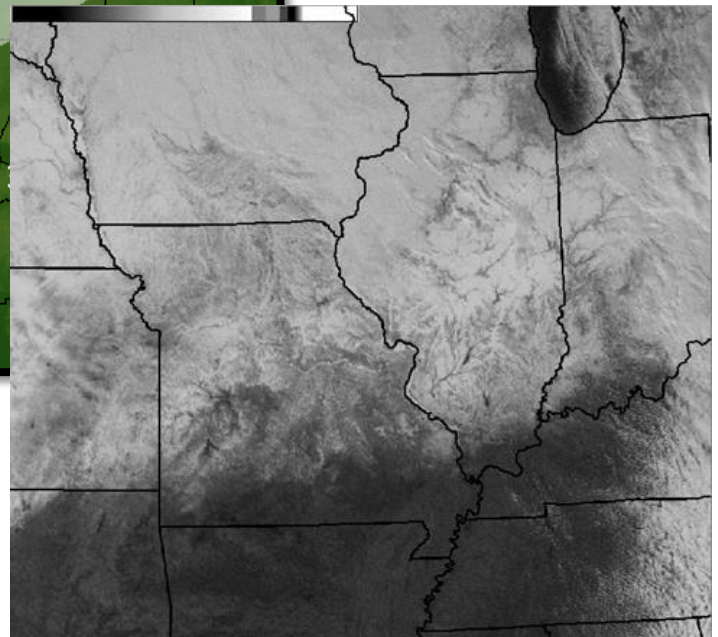
December 15th-16th, 2007

Overview

A winter storm system rapidly deepened as it moved across the Midwest, producing two distinct waves of winter precipitation. The first round came during the early morning hours of December 15th in the form of a wintry mix. The second round developed during the afternoon across southwest and central Missouri, and intensified as it moved northeast across the St. Louis metropolitan area and into central Illinois. In fact, thundersnow was observed in St. Louis County.



Snow accumulation map for December 15th-16th, 2007.



December 16th, 2007 visible satellite imagery of snow cover over the region.

Storm Total Snowfall

PUBLIC INFORMATION STATEMENT NATIONAL WEATHER SERVICE
ST LOUIS MO 930 PM CST SUN DEC 16 2007

OFFICIAL STORM TOTAL SNOWFALLS FOR DECEMBER 14-15 2007

FIRST ORDER STATIONS...

STL : ST. LOUIS : 7.4

COU : COLUMBIA : 6.1

IN NORTHEAST MISSOURI...

BOWLING GREEN: 8.0 CANTON L/D 20: 4.0 CLARKSVILLE L/D 24: 6.0 EDINA: 3.2

HANNIBAL: 5.0 LOUISIANA: 6.4 NEW LONDON: 5.2 NOVELTY: 5.0 PALMYRA: 4.0

SAVERTON L/D 22: 5.5 STEFFENVILLE: 3.3 VANDALIA: 4.0

IN CENTRAL MISSOURI... ASHLAND: 5.0 CALIFORNIA: 4.3 COLUMBIA U OF M: 4.0

COLUMBIA 2 NW: 5.4 FREEDOM: 4.0 FULTON: 4.2 HALLSVILLE: 5.0 HOLT SUMMIT: 5.0

JEFFERSON CITY: 5.0 MEXICO: 6.0 RICH FOUNTAIN 3 E: 5.1 PARIS: 3.0

IN EAST CENTRAL MISSOURI... DE SOTO: 3.8 FESTUS: 5.0 HIGH RIDGE: 7.9 NEW HAVEN:

7.0 PEVELY 3 W: 4.5 UNION: 6.1 WASHINGTON SPOTTER: 6.0

FROM OUR ST. LOUIS METRONET... BALLWIN: 8.2 CHESTERFIELD: 8.0 COTTLEVILLE: 6.3

CREVE COEUR: 8.2 DARDENNE PRARIE: 7.3 DES PERES: 8.0 HARVESTER MO: 7.8 LAKE ST

LOUIS: 7.0 MANCHESTER: 8.3 MEHLVILLE 1 E: 5.8 O FALLON MO: 7.6 SCIENCE CENTER:

6.4 ST CHARLES MO: 6.6 ST PETERS MO: 6.0 TROY MO: 5.6 UNIVERSITY CITY MO: 5.6

WEBSTER GROVE: 5.8 WELDON SPRING NWS: 6.7

IN SOUTHEAST MISSOURI... ARCADIA: 2.3 BELLEVIEW 4 SE: 2.2 BONNE TERRE: 3.0

ELLINGTON: 2.1 CUBA: 6.0 FARMINGTON: 2.0 FENTON: 8.0 FREDRICKTOWN: 1.3 OATES :

2.2 POTOSI 5 SW: 4.8 RICHHOODS: 5.7 ROSEBUD: 5.7 STE GENEVIEVE: 2.2 STE

GENEVIEVE 3 NW: 3.8 STEELVILLE: 7.0 SULLIVAN: 8.0 SULLIVAN 4 ESE: 5.8

IN WEST CENTRAL ILLINOIS... GRIGGSVILLE: 5.5 PAYSON: 5.0 QUINCY L/D 21: 4.0 MT

STERLING: 5.0 MOUND STATION: 6.0

IN CENTRAL ILLINOIS... CARLINVILLE: 8.0 CENTRALIA: 6.1 GIRARD: 6.0 GREENVILLE:

5.0 HILLSBORO: 5.6 KIMMUNDY: 3.8 LITCHFIELD: 7.0 NOKOMIS: 6.6 PATOKA: 6.2

RAMSEY: 5.5 SALEM: 3.8 VANDALIA: 5.0 VIRDEN: 6.5

IN SOUTHWEST ILLINOIS... ALBERS: 4.2 AVISTON: 6.0 BELLEVILLE: 7.3 BETHALTO:

7.0 CHESTER: 3.0 EDWARDSVILLE 2 W: 6.2 ELSAH: 8.0 FAIRVIEW HEIGHTS: 7.5

FREEBURG: 3.5 GREENFIELD: 9.5 GODFREY : 8.6 GRAFTON: 6.8 HIGHLAND: 4.6 HIGHLAND

3 E: 6.3 KASKASKIA L/D: 2.5 LEBANON: 7.9 MEDORA: 6.5 NASHVILLE 4 NE: 4.0 NEW

ATHENS : 3.6 PRARIE DU ROCHRE: 5.0 RED BUD: 4.3 ROXANA: 7.4 SPARTA: 3.0 ST.

LIBORY: 4.0 ST. JACOB: 4.0 WATERLOO: 6.0

Any questions regarding this event review should be address to w-lsx.webmaster@noaa.gov