

# Four Weak Tornadoes

## April 27<sup>th</sup>, 2016

### Overview

Supercell thunderstorms developed during the late afternoon and evening hours of April 27<sup>th</sup>. Four weak tornadoes touched down along and north of a warm front across portions of northeast Missouri and west central Illinois.



**Storm damage surveys indicate that four weak tornadoes occurred during the evening hours of 4/27/2016.**

#### **Baring (Knox County) EF1 Tornado**

- Maximum Wind Speed: 90 MPH
- Path Length: 0.2 miles
- Path Width: 40 yards
- Fatalities: None
- Injuries: None

4/27/2016 7:48 PM CDT – 7:49 PM CDT

A brief EF1 tornado, with winds of 90 mph occurred on the Knox and Scotland County line. A manufactured home was blown off its bricks and destroyed. A door on a barn was ripped off also.

## Damage Surveys



Damage Survey Map for EF1 Maywood, MO Tornado.

### Maywood EF1 Tornado

Maximum Wind Speed: 100 MPH

Path Length: 2.0 miles

Path Width: 150 yards

Fatalities: None

Injuries: None

4/27/2016 9:00 PM CDT – 9:04 PM CDT

A tornado touched down in a farm field north of Highway O and west of Oak Ave, which is west-northwest of Maywood. The tornado moved east directly hitting a home in its path, causing EF1 damage by lifting a large portion of the roof from the house (top right photograph). Roofing materials were deposited up to a half mile to the east of the building. The tornado continued east toward Oak Ave. causing significant tree damage. At Oak Ave. the tornado rolled a full size tanker truck on its side and destroyed two grain bins (middle right photograph). The tornado continued east across Olive Ave. causing significant tree damage. The tornado dissipated a few hundred yards to the east of Olive Ave in a farm field.

Storm chasers were broadcasting on Periscope and the lower picture to the right shows a possible tornado near Maywood illuminated by lightning.





### **Raymond EFO Tornado**

Maximum Wind Speed: 65 MPH

Path Length: 5 Miles (Not continuous)

Path Width: 50 yards

Fatalities: None

Injuries: None

4/27/2016 6:23 PM CDT – 6:35 PM CDT

A series of weak and brief EFO tornado touchdowns were recorded by storm chasers near Raymond, IL. No damage was observed as the brief touchdowns occurred in open fields.



**EFO tornado touching down east of Raymond, IL. Photo courtesy of Shae Cohan (Illinoisstormchaser.com).**



**EFO tornado touching down near Raymond, IL. Photo courtesy of Shae Cohan (Illinoisstormchaser.com).**

## Emden EF0 Tornado

Maximum Wind Speed: 80 MPH

Path Length: 1.0 mile

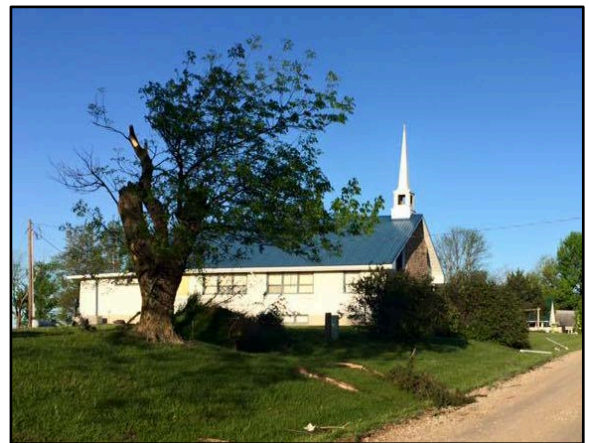
Path Width: 75 yards

Fatalities: None

Injuries: None

4/27/2016 8:23 PM CDT – 8:25 PM CDT

A weak EF0 tornado touched down in the southeast portion of the town of Emden and moved northeast destroying several outbuildings, uprooting large trees and damaging a church. The tornado continued northeast causing minor tree damage and structural damage to a property northeast of town. The tornado dissipated about one mile northeast of Emden.



Tornado damage in Emden.



Please note that while the severe weather data presented in this event synopsis has been quality controlled, it is still considered unofficial. Official reports & statistics for severe weather events can be found in the **Storm Data** publication (<http://www.ncdc.noaa.gov/IPS/sd/sd.html>) or **Storm Events Database** (<http://www.ncdc.noaa.gov/stormevents/>), available from the National Centers for Environmental Information (NCEI) web page [formerly the National Climate Data Center (NCDC)].

More detailed tornado track information can be accessed using the National Weather Service Damage Assessment Toolkit for all tornadoes beginning in 2012. <https://apps.dat.noaa.gov/StormDamage/DamageViewer/>

**Any questions regarding this event review should be address to [w-lsx.webmaster@noaa.gov](mailto:w-lsx.webmaster@noaa.gov)**