



Drought Information Statement for the South Plains, Rolling Plains, and far Southern Texas Panhandle

Valid May 30, 2026

Issued By: WFO Lubbock, TX

Contact Information: lub.webmaster@noaa.gov

- Please see all currently available products at <https://drought.gov/drought-information-statements>.
 - Please visit <https://www.weather.gov/lub/DroughtInformationStatement> for previous statements.
 - Please visit <https://www.drought.gov/drought-status-updates> for regional drought status updates.
-
- Recent rainfall has subdued the fire weather season
 - Additional widespread rainfall is needed to significantly improve long term drought conditions
 - This product will be updated July 2, 2026 or sooner if drought conditions change significantly



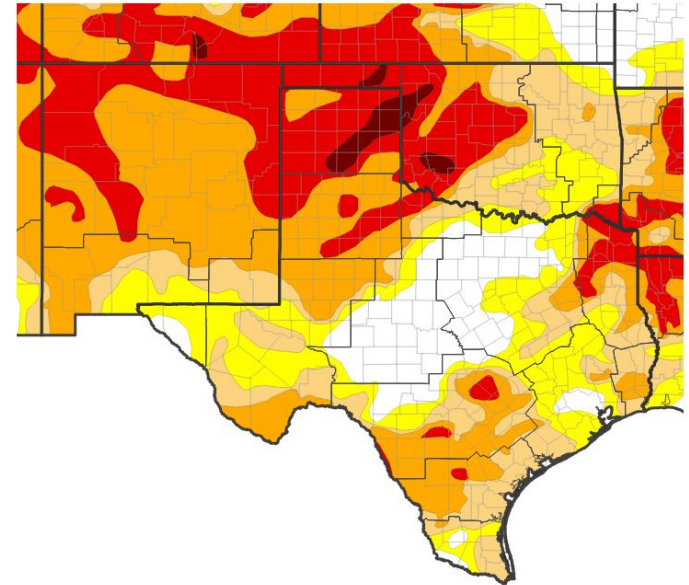


U.S. Drought Monitor

Link to the [latest U.S. Drought Monitor](#) for South Plains, Rolling Plains, and southern Texas Panhandle

- Drought intensity and Extent
 - **D3 (Extreme Drought)**: The southwestern Texas Panhandle and portions of the South Plains and Rolling Plains were observing extreme drought.
 - **D2 (Severe Drought)**: Much of the South Plains and Rolling Plains were experiencing severe drought.

U.S. Drought Monitor



U.S. Drought Monitor



Source(s): NDMC, NOAA, USDA, NASA; image courtesy of Drought.gov

Data Valid: 05/26/26



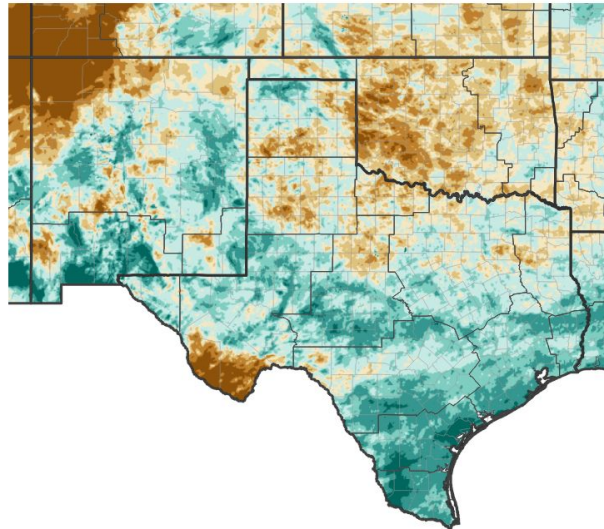


Precipitation

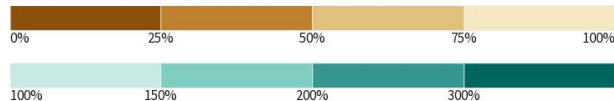
Last 30 days

- Increasing precipitation is usually anticipated from April through May.
- May of 2026 saw spotty precipitation and a lack of widespread meaningful rainfall.

30-Day Percent of Normal Precipitation

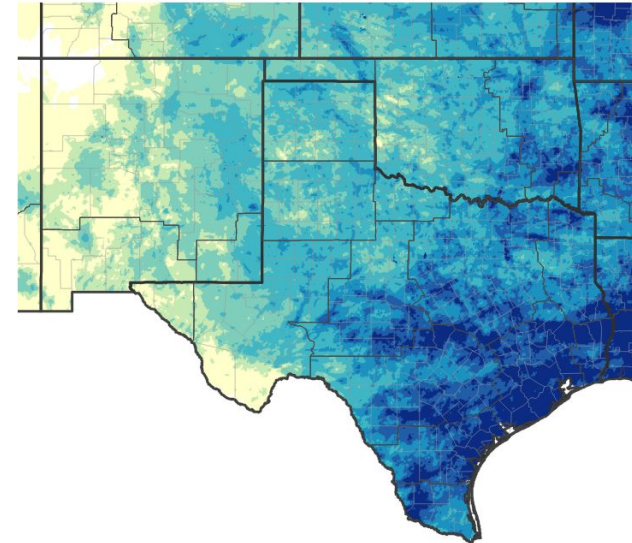


Precipitation Shown as a Percentage of Normal Conditions

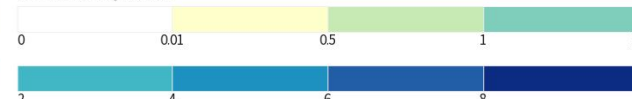


Source(s): National Weather Service Multi-Radar Multi-Sensor System; image courtesy of Drought.gov Last Updated: 05/30/26

30-Day Precipitation Accumulations (inches)



Inches of Precipitation



Source(s): National Weather Service Multi-Radar Multi-Sensor System; Last Updated: 05/30/26





Summary of Impacts

Links: See [Condition Monitoring Observer Reports \(CMOR\)](#) and view the [Drought Impacts Reporter](#)

Hydrologic Impacts

- Area reservoirs continue to slowly fall with a lack of meaningful rainfall (USGS Gauges).

Agricultural Impacts

- Please see the latest [Crop and Weather Report](#) from Texas A&M Agrilife.
- Minor improvements to soil moisture and livestock have been observed over the past couple of weeks.

Fire Hazard Impacts

- Numerous large wildfires impacted the region through mid-May with dry, warm, and windy conditions persisting.

Other Impacts

- Soil moisture values are below the 5th percentile in many locations.
- Others areas that have seen rainfall have improved soil moisture conditions. ([NASA SpoRT-LiS](#))

Mitigation Actions

- Burn bans remained in place for most counties across the region.





Hydrologic Conditions and Impacts

- Area reservoirs continued to fall without any meaningful rainfall.

Reservoir	Conservation Pool (ft)	Current Elevation (ft)	Percent Full
Mackenzie Lake	3100.0	3021.0	15%
White River Lake	2370.0	2351.0	21%
Lake Alan Henry	2220.0	2212.2	80%
Lake Meredith	2936.0	2891.0	44%



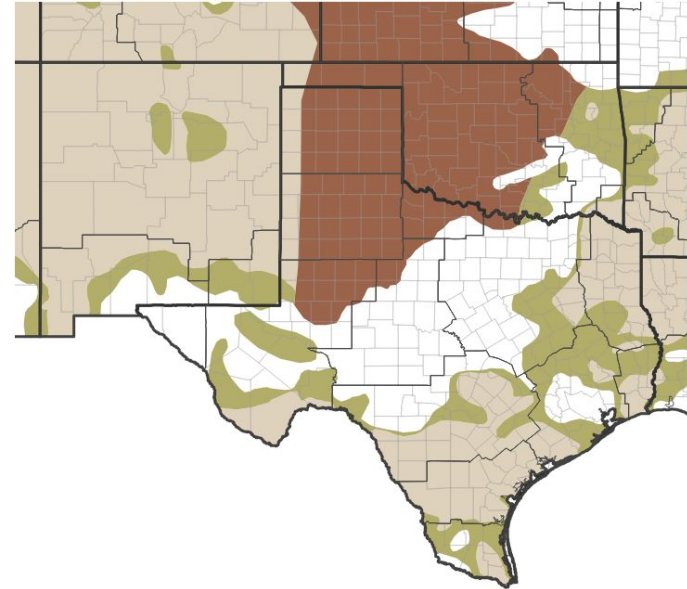


Drought Outlook

The latest monthly and seasonal outlooks can be found on the [CPC homepage](#)

- A lack of meaningful rainfall over the past couple of months will make improving drought conditions increasingly difficult through the remainder of the spring and summer months.

Seasonal (3-Month) Drought Outlook for May 21, 2026–August 31, 2026



Drought Is Predicted To...



Source(s): Climate Prediction Center; image courtesy of Drought.gov

Last Updated: 05/21/26

Links to the latest:

[Climate Prediction Center Monthly Drought Outlook](#)

[Climate Prediction Center Seasonal Drought Outlook](#)



National Oceanic and
Atmospheric Administration

U.S. Department of Commerce

National Weather Service
Lubbock, TX