

## Storm Data and Unusual Weather Phenomena - May 2013

Location	Date/Time	Deaths & Injuries	Property & Crop Dmg	Event Type and Details
----------	-----------	-------------------	---------------------	------------------------

### TEXAS, South Panhandle

(TX-Z021) PARMER, (TX-Z022) CASTRO, (TX-Z023) SWISHER, (TX-Z024) BRISCOE, (TX-Z025) HALL, (TX-Z026) CHILDRESS, (TX-Z027) BAILEY, (TX-Z028) LAMB, (TX-Z029) HALE, (TX-Z030) FLOYD, (TX-Z031) MOTLEY, (TX-Z032) COTTLE, (TX-Z033) COCHRAN, (TX-Z034) HOCKLEY, (TX-Z035) LUBBOCK, (TX-Z036) CROSBY, (TX-Z037) DICKENS, (TX-Z038) KING, (TX-Z039) YOAKUM, (TX-Z040) TERRY, (TX-Z041) LYNN, (TX-Z042) GARZA, (TX-Z043) KENT, (TX-Z044) STONEWALL

05/01/13 00:00 CST	0	Drought
05/31/13 23:59 CST	50M	

Drought conditions largely worsened through the month of May with most rainfall eluding the region. Extreme (D3) and exceptional (D4) drought levels expanded across the entire area. Only portions of Hall and Yoakum counties remained in severe (D2) drought.

May is typically the time of year when the region experiences rainfall however not much rain has fallen this springtime. Deficits were on the order of one to three inches area wide. Lubbock received only 1.15 inches while areas across the Rolling Plains fared better with more frequent thunderstorm events. Several late season cold fronts brought some of the coldest temperatures on record for the month of May. The first half of the month was generally much colder than normal because of these cold fronts with the second half of the month warmer than normal. By the end of the month, temperatures were only 0.3 and 0.7 degrees above normal at Lubbock and Childress, respectively. Keetch-Byram Drought Index values expectantly worsened through the month. By the end of May, values between 500 and 700 were observed across the entire region except for the extreme southwestern Texas panhandle. In this location, values between 200 and 400 were discernible.

Rain was desperately needed for area crops otherwise another year of poor crops can be expected. Winter wheat was nearly a total loss for the region with most crops being baled out for hay. Pastures were also in increasingly poor to very poor condition. Spring planting had begun despite little soil moisture available. Fire weather conditions were very low this year despite a dry season. This was mainly due to low fuel load after three years of drought and minimal growth.

Economic losses due to drought through May since the drought began were estimated near \$2.7 billion.

(TX-Z021) PARMER, (TX-Z022) CASTRO

05/01/13 20:00 CST	0	High Wind (MAX 36 kt)
05/02/13 03:10 CST	0	

A powerful cold front pushed through West Texas during the daytime hours of the first. However, colder air and very strong winds did not arrive until late in the evening. Some winds reached high wind criteria over the extreme southwestern Texas panhandle.

Sustained high wind reports are as follows from the Texas Tech University Mesonet:

41 mph at Friona (Parmer County)...41 mph at Hart (Castro County), and 41 mph at Dimmitt (Castro County).

HOCKLEY COUNTY --- 1.5 W COBLE [33.60, -102.53]

05/06/13 20:46 CST	0	Hail (1.00 in)
05/06/13 20:46 CST	0	Source: Storm Chaser

A storm chaser reported quarter size hail at the intersection of Highway 114 and Farm to Market Road 303. No damage was reported.

HOCKLEY COUNTY --- 3.0 E SUNDOWN [33.45, -102.45]

05/06/13 21:12 CST	0	Thunderstorm Wind (EG 56 kt)
05/06/13 21:12 CST	0	Source: Storm Chaser

A storm chaser estimated a wind gust to 65 mph three miles east of Anton. No damage was reported.

TERRY COUNTY --- 5.0 NNE BROWNFIELD [33.25, -102.25]

05/06/13 21:50 CST	0	Thunderstorm Wind (EG 58 kt)
05/06/13 21:50 CST	0	Source: Storm Chaser

A storm chaser estimated a wind gust to 67 mph five miles north-northeast of Brownfield. No damage was reported.

Despite marginal moisture characterized by dewpoints in the low 40s, ample wind shear and weak instability in upslope flow gave rise to scattered thunderstorms in far eastern New Mexico early this evening. One of these storms matured into a supercell that tracked from Portales, NM southeast to east of Morton and near Levelland early this night. The only severe weather from this storm occurred in the form of quarter size hail and downburst winds as it transitioned into a linear multicell near Levelland. Additionally, power outages were reported near and around Levelland.

## Storm Data and Unusual Weather Phenomena - May 2013

Location	Date/Time	Deaths & Injuries	Property & Crop Dmg	Event Type and Details
<b>HALL COUNTY --- 3.0 W ESTELLINE [34.55, -100.48]</b>				
	05/08/13 15:39 CST		0	Hail (1.25 in)
	05/08/13 15:39 CST		0	Source: Trained Spotter
Half dollar size hail was reported by a SKYWARN spotter west of Estelline.				
<b>HALL COUNTY --- 5.0 SE LAKEVIEW [34.62, -100.64]</b>				
	05/08/13 16:25 CST		0	Hail (2.75 in)
	05/08/13 16:25 CST		0	Source: Storm Chaser
A storm chaser observed baseball size hail southeast of Lakeview.				
<b>COTTLE COUNTY --- 0.7 S PADUCAH [34.01, -100.30]</b>				
	05/08/13 16:40 CST		0	Hail (1.00 in)
	05/08/13 16:40 CST		0	Source: COOP Observer
A COOP observer reported quarter size hail near Paducah.				
<b>STONEWALL COUNTY --- 12.6 NNW PEACOCK [33.35, -100.48]</b>				
	05/08/13 16:55 CST		0	Tornado (EF0, L: 0.01 mi , W: 40 yd)
	05/08/13 16:55 CST		0	Source: Storm Chaser
A storm chaser observed a very brief tornado over open land in far northwest Stonewall County. The only evidence of the tornado was a rotating column of dirt underneath a slowly-rotating cloud base.				
<b>COTTLE COUNTY --- 2.0 SE PADUCAH [34.00, -100.28]</b>				
	05/08/13 17:28 CST		0	Hail (2.00 in)
	05/08/13 17:28 CST		0	Source: Storm Chaser
Hen egg size hail was spotted by a storm chaser southeast of Paducah.				
<p><b>Scattered supercell thunderstorms erupted along a dryline located just east of the Caprock escarpment this afternoon. These storms tracked slowly east through the Rolling Plains and far southeast Texas Panhandle accompanied by hail as large as baseballs at times and rotating wall clouds. One of these wall clouds produced a brief tornado in northwest Stonewall County over open land.</b></p>				

## Storm Data and Unusual Weather Phenomena - May 2013

Location	Date/Time	Deaths & Injuries	Property & Crop Dmg	Event Type and Details
----------	-----------	-------------------	---------------------	------------------------



*A very brief tornado developed over open land in far northwest Stonewall County during the late afternoon of May 8, 2013. Photo courtesy of Randy Denzer.*

---

**BRISCOE COUNTY --- SILVERTON [34.47, -101.30]**

05/09/13 16:16 CST	0	0	Hail (0.75 in)
05/09/13 16:24 CST	0	0	Source: Unknown

---

**DICKENS COUNTY --- MC ADOO [33.73, -100.98]**

05/09/13 17:23 CST	15K	0	Hail (1.75 in)
05/09/13 17:23 CST	0	0	Source: Fire Department/Rescue

A fire department official reported hail to the size of golf balls in McAdoo. Large hail also damaged a fuel tank which spilled about 4000 gallons of gasoline.

---

**PARMER COUNTY --- 2.0 NE FRIONA [34.65, -102.71]**

05/09/13 18:45 CST	0	0	Thunderstorm Wind (MG 52 kt)
05/09/13 18:45 CST	0	0	Source: Mesonet

A Texas Tech University West Texas mesonet site near Friona recorded a wind gust to 60 mph. No damage was reported.

---

**(TX-Z028) LAMB**

05/09/13 19:30 CST	2	0	Strong Wind (MAX 48 kt)
05/09/13 19:40 CST	0	0	

Direct Fatalities: M7VE, M75VE

Scattered thunderstorms developed both east and west of the dryline on the afternoon of the ninth with an upper level disturbance moving over West Texas. Severe storms in the moist air east of the dryline produced large hail while severe storms in the dry air west

## Storm Data and Unusual Weather Phenomena - May 2013

Location	Date/Time	Deaths & Injuries	Property & Crop Dmg	Event Type and Details
----------	-----------	-------------------	---------------------	------------------------

of the dryline produced strong wind gusts. A weak thunderstorm northeast of Lamb County developed a strong outflow boundary that moved through Sudan around 1930 CST. At the same time, a tractor trailer was traveling east along US Highway 84 and jackknifed into the westbound lane. The tractor trailer hit a pickup truck and killed the driver and a young boy that was a passenger in the pickup truck.

**(TX-Z028) LAMB, (TX-Z035) LUBBOCK**

	05/17/13 23:35 CST		0	High Wind (MAX 60 kt)
	05/18/13 01:01 CST		0	

An upper level disturbance moved across the South Plains ahead of a retreating dryline during the early overnight hours. Isolated virga showers and embedded thunder subsequently developed, producing severe wind gusts at the ground due to low level dry air in place.

Maximum high wind gust reports are as follows from the Texas Tech University Mesonet and Automated Surface Observation System:

69 mph at Slaton (Lubbock County)...64 mph at Amherst (Lamb County)...and 59 mph at the Lubbock Preston Smith International Airport (Lubbock County).

**COTTLE COUNTY --- 2.0 S PADUCAH [33.99, -100.30]**

	05/18/13 16:59 CST		0	Hail (1.00 in)
	05/18/13 16:59 CST		0	Source: Fire Department/Rescue

Local fire rescue officials observed quarter size hail south of Paducah.

**CHILDRESS COUNTY --- 3.0 S TELL [34.33, -100.38]**

	05/18/13 17:29 CST		0	Hail (1.00 in)
	05/18/13 17:29 CST		0	Source: COOP Observer

A local COOP observer reported quarter size hail south of Tell.

Isolated storms developed across the far southeast Texas panhandle and northern Rolling Plains during the late afternoon and early evening hours ahead of the dryline. A couple of these storms became severe, producing large hail.

**CASTRO COUNTY --- 2.0 NE DIMMITT [34.57, -102.30]**

	05/21/13 06:00 CST		0	Thunderstorm Wind (MG 56 kt)
	05/21/13 06:00 CST		0	Source: Mesonet

The West Texas Mesonet station in Dimmitt recorded a 65 mph wind gust from the outflow of a nearby thunderstorm.

**LAMB COUNTY --- 4.0 N LITTLEFIELD [33.98, -102.32]**

	05/21/13 06:35 CST		0	Hail (1.75 in)
	05/21/13 06:35 CST		0	Source: Public

A citizen reported golf ball size hail at a golf course north of Littlefield.

**HALE COUNTY --- 0.9 SE COTTON CENTER [33.99, -101.99]**

	05/21/13 07:10 CST		0	Hail (1.75 in)
	05/21/13 07:10 CST		0	Source: Public

A citizen reported golf ball size hail near Cotton Center.

A vigorous upper level disturbance ejected out of New Mexico during the early morning hours. The system aided in developing isolated storms in a highly sheared environment across portions of the far southwestern Texas Panhandle and northern South Plains. Some of these storms became severe.

**FLOYD COUNTY --- 5.0 ENE MUNCY [34.10, -101.32]**

	05/23/13 12:53 CST		0	Tornado (EF0, L: 0.01 mi , W: 30 yd)
	05/23/13 12:53 CST		0	Source: Trained Spotter

Multiple storm spotters and chasers observed a very brief landspout tornado about seven miles WSW of Cedar Hill.

**FLOYD COUNTY --- 10.2 SE SOUTH PLAINS [34.11, -101.20]**

	05/23/13 13:22 CST		0	Tornado (EF0, L: 0.01 mi , W: 30 yd)
	05/23/13 13:22 CST		0	Source: Fire Department/Rescue

## Storm Data and Unusual Weather Phenomena - May 2013

Location	Date/Time	Deaths & Injuries	Property & Crop Dmg	Event Type and Details
----------	-----------	-------------------	---------------------	------------------------

Following a brief landspout tornado earlier, Floydada Fire Department personnel observed a second brief landspout tornado about two miles south of Cedar Hill.

---

**FLOYD COUNTY --- 7.3 E FLOYDADA MUNI ARPT [34.00, -101.20], 5.7 NW DOUGHERTY [33.98, -101.16]**

	05/23/13 13:23 CST	0	Hail (1.75 in)
	05/23/13 14:20 CST	0	Source: Fire Department/Rescue

For nearly an hour, a slow-moving supercell drifted south over rural areas of southeast Floyd County and produced several instances of large hail. These hailstones ranged in size from quarters to golfballs and produced an undetermined amount of damage to crops and some vehicles.

---

**FLOYD COUNTY --- 6.6 NW DOUGHERTY [33.99, -101.17], 5.7 NW DOUGHERTY [33.98, -101.16]**

	05/23/13 13:30 CST	0	Tornado (EF0, L: 0.67 mi , W: 50 yd)
	05/23/13 13:35 CST	0	Source: Trained Spotter

Several storm spotters and storm chasers observed a landspout tornado with a visible funnel cloud for about five minutes. This landspout moved slowly southward north of US Highway 62/70 and was visible as far away as the Hale County Airport in Plainview. Fortunately, this landspout caused no damage as it tracked over open land.

---

**CROSBY COUNTY --- 8.0 E CONE [33.78, -101.24], 1.3 WSW CROSBYTON PAULDER AR [33.64, -101.24]**

	05/23/13 14:14 CST	20K	Thunderstorm Wind (MG 67 kt)
	05/23/13 14:59 CST	0	Source: Broadcast Media

A swath of destructive winds in the rear flank downdraft of a supercell exited Floyd County and engulfed much of northern Crosby County for at least 45 minutes. The slow movement of the supercell and its eventual collapse near Crosbyton prolonged the duration and intensity of these winds. Wind gusts in Crosbyton were measured as high as 77 mph resulting in scattered minor structural damage. Several tree limbs were broken and a few trees were completely snapped or uprooted. Multiple power outages resulted from snapped power poles throughout portions of northern Crosby County. These fierce winds also created a dangerous haboob that produced near zero visibility in blowing dust for several minutes. An unknown quantity of young grain crops in the area were damaged or destroyed after being sand blasted by wind and dust.

---

**FLOYD COUNTY --- 1.8 NE LAKEVIEW [33.89, -101.23]**

	05/23/13 14:20 CST	10K	Thunderstorm Wind (EG 61 kt)
	05/23/13 14:25 CST	0	Source: COOP Observer

A NWS COOP observer reported shingles removed from multiple homes southeast of Floydada. These winds were the result of an intense rear flank downdraft of a supercell that would later proceed southward into Crosby County and produce an extended period of strong and severe winds.

---

**DICKENS COUNTY --- 1.3 WNW AFTON [33.76, -100.82], 2.1 SSW ELTON [33.69, -100.84]**

	05/23/13 14:49 CST	0	Hail (1.75 in)
	05/23/13 14:49 CST	0	Source: Law Enforcement

Law enforcement personnel estimated golf ball size hail in Afton and also five miles north of Dickens. Damage from the hail was not known.

---

**DICKENS COUNTY --- 0.6 E SPUR [33.48, -100.84]**

	05/23/13 15:15 CST	5K	Thunderstorm Wind (EG 70 kt)
	05/23/13 15:15 CST	0	Source: Broadcast Media

A roof was partially blown off a home about one mile east of Spur. The cause was determined to be an intense downburst wrapping around a mesocyclone passing east of the house. These destructive straight-line winds would continue southeast into northeastern Kent County and cause scattered to widespread wind damage.

---

**DICKENS COUNTY --- 10.9 E SPUR [33.48, -100.66], 11.5 E SPUR MUNI ARPT [33.45, -100.65]**

	05/23/13 15:15 CST	0	Tornado (EF1, L: 1.94 mi , W: 300 yd)
	05/23/13 15:25 CST	0	Source: NWS Storm Survey

A NWS aerial storm survey discovered evidence of a tornado debris pattern in open ranch land in far southeast Dickens County. Damage to trees in this area displayed a hallmark convergent pattern and correlated well with a tight gate-to-gate rotation couplet in the area as observed by Doppler radar. The path length and width are crude estimates given generally sparse damage indicators throughout the path of this tornado. Damage to some trees was deemed sufficiently strong to warrant an EF-1 rating.

---

**KENT COUNTY --- 0.6 E GIRARD [33.35, -100.66], 0.7 N JAYTON KENT CO ARPT [33.24, -100.57]**

	05/23/13 15:37 CST	0.30M	Thunderstorm Wind (MG 80 kt)
	05/23/13 16:20 CST	0	Source: Mesonet

## Storm Data and Unusual Weather Phenomena - May 2013

Location	Date/Time	Deaths & Injuries	Property & Crop Dmg	Event Type and Details
----------	-----------	-------------------	---------------------	------------------------

Similar to an earlier supercell in Floyd and Crosby Counties, intense downburst winds in the rear flank downdraft created prolonged and widespread destructive winds in northeast Kent County. These winds were likely enhanced by a strong mesocyclone that earlier was tornadic in southeast Dickens County. A Texas Tech University West Texas mesonet located one mile SSE of Jayton recorded 20 consecutive minutes of severe wind gusts ranging from 59 mph to 92 mph! In Girard and Jayton, scattered structural damage was commonplace and at least one trailer was completely destroyed. At least one home in Girard lost a portion of its roof, but damage to most homes in Girard and Jayton was less severe and consisted of shingle loss, damage to siding, cracked or shattered windows, and toppled fences. Several trees were damaged; one of which totaled a car in Jayton after landing directly on the vehicle. Damage to area farm and ranch land consisted of toppled center pivots and large storage tanks. Power outages were common as several dozen power poles were snapped. Fortunately, no injuries occurred during this extended bout of destructive winds; however, damage to some homes was compounded by heavy rains entering damaged roofs and cracked windows resulting in water damage to carpets, walls and furniture. A NWS storm survey the following day in Girard and Jayton uncovered classic divergent debris patterns associated with downbursts. Monetary losses are estimated at this time and may rise once insurance figures become available.

### KENT COUNTY --- JAYTON [33.25, -100.58]

05/23/13 15:45 CST	0	Heavy Rain
05/23/13 17:30 CST	0	Source: COOP Observer

Torrential rains fell over much of far northeast Kent County from a slow-moving, high precipitation supercell. In Jayton, the NWS COOP observer measured a staggering 4.3 inches of rain; most of which fell in one hour. Elsewhere, a Texas Tech University West Texas mesonet station southeast of Jayton recorded 2.45 inches; however, intense straight-line winds during the heaviest rainfall likely resulted in some undercatch issues. These rains produced minor flooding of roads and ranch land with at least one instance of several inches of water flowing over a road near Girard. Runoff from these rains caused a river gage ten miles south of Aspermont to rise seven feet in four hours early the next morning, but this impressive rise still remained well below the river flood action stage.

### DICKENS COUNTY --- 0.6 W SPUR [33.48, -100.86]

05/23/13 16:13 CST	0	Hail (1.75 in)
05/23/13 16:15 CST	0	Source: Broadcast Media

Broadcast media estimated hailstones ranging in size from quarters in Spur to golf ball size one mile east of Spur. No reports of damage were received.

### STONEWALL COUNTY --- 3.6 SW ASPERMONT ARPT [33.08, -100.29], 9.8 SW ASPERMONT ARPT [33.02, -100.37]

05/23/13 16:30 CST	0	Hail (3.00 in)
05/23/13 16:33 CST	0	Source: Amateur Radio

An amateur radio operator measured large hail of golf ball size six miles southwest of Aspermont and tennis ball size 12 miles southwest of Aspermont. A separate report and photo of three-inch diameter hail was also received about 12 miles southwest of Aspermont. No damage was observed.

### LYNN COUNTY --- O'DONNELL [32.97, -101.83]

05/23/13 18:03 CST	0	Hail (1.10 in)
05/23/13 18:03 CST	0	Source: Public

A resident reported hail slightly larger than quarters covering their lawn. No damage was reported.

### LYNN COUNTY --- 2.0 NW SKEEN [33.14, -101.81]

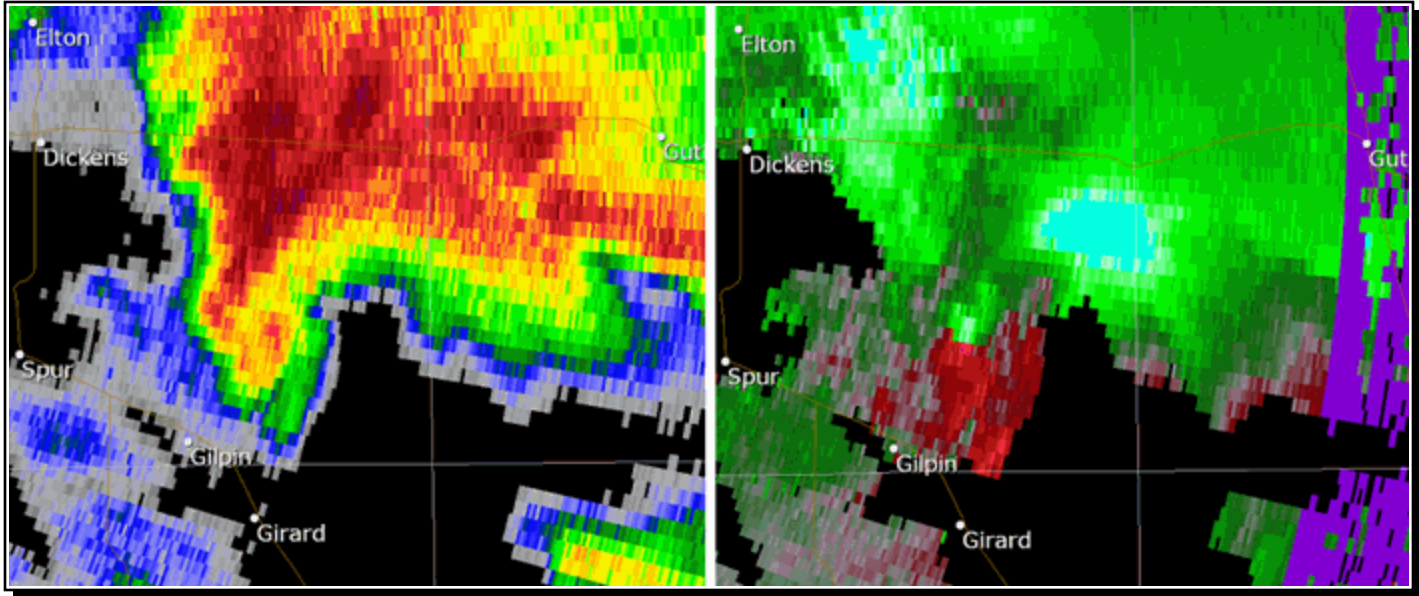
05/23/13 18:25 CST	0	Thunderstorm Wind (MG 53 kt)
05/23/13 18:25 CST	0	Source: Trained Spotter

A trained spotter measured a wind gust to 61 mph in Tahoka.

Driven southwest by outflow from a complex of thunderstorms in Oklahoma early this morning, a frontal boundary moved into the northeast South Plains and northern Rolling Plains by noon ahead of very moist easterly winds. Although a weak upper ridge was in place over West Texas, a subtropical jet streak flowing over the region assisted in severe thunderstorm development. Strong instability combined with upslope flow and the frontal boundary allowed a supercell storm to erupt early this afternoon in central Floyd County before moving slowly south accompanied by multiple landspout tornadoes, large hail and heavy rain. As this supercell collapsed near Cone, a haboob raced south and west with winds up to 77 mph resulting in minor damage to trees and structures in Crosbyton. Thereafter, a second supercell storm developed to the east in central Dickens County which also proceeded to move south. While east of Spur, this supercell produced an EF-1 tornado over ranch land that damaged some trees. As this storm's mesocyclone continued southward, intense and prolonged rear flank downdraft winds measured as high as 92 mph created scattered structural damage in Girard and Jayton. Torrential rains were measured as high as 4.3 inches by a NWS COOP observer in Jayton; however, flash flooding was not reported. Fortunately, no injuries occurred with any of these storms. Total property losses could exceed \$250,000.

## Storm Data and Unusual Weather Phenomena - May 2013

Location	Date/Time	Deaths & Injuries	Property & Crop Dmg	Event Type and Details
----------	-----------	-------------------	---------------------	------------------------



*NWS Lubbock radar image around the time of an EF-1 tornado in rural southeast Dickens County. An aerial storm survey the following day revealed some convergent debris patterns consisting of trees and tree limbs scattered about a nearly 2-mile long path with damage widths up to 300 yards at times.*

---

**(TX-Z035) LUBBOCK**

	05/25/13 22:20 CST	0	High Wind (MAX 56 kt)
	05/25/13 22:20 CST	0	

Decaying showers and thunderstorms developed an outflow boundary, which produced a wind gust of 65 mph at Reese Center.

---

**CHILDRESS COUNTY --- 0.9 NW TELL [34.38, -100.39]**

	05/27/13 16:45 CST	0	Hail (2.75 in)
	05/27/13 16:45 CST	0	Source: Public

The public estimated hail as large as baseballs in Tell. Instances of damage to property or crops were unknown.

---

**CHILDRESS COUNTY --- 2.9 W CHILDRESS [34.42, -100.25]**

	05/27/13 16:45 CST	0	Hail (1.75 in)
	05/27/13 16:45 CST	0	Source: Public

The public estimated hail between nickel and golf ball size in Childress. Damage to property was unknown.

---

**DICKENS COUNTY --- 2.8 NNE GLENN [33.82, -100.84]**

	05/27/13 16:46 CST	0	Hail (1.00 in)
	05/27/13 16:46 CST	0	Source: Trained Spotter

A trained spotter estimated quarter size hail 14 miles north of Dickens. No damage was reported.

---

**MOTLEY COUNTY --- 0.6 W ROARING SPGS [33.90, -100.86]**

	05/27/13 16:50 CST	0	Hail (1.75 in)
	05/27/13 16:50 CST	0	Source: Fire Department/Rescue

Fire department personnel from Roaring Springs estimated mostly quarter size hail with some golf ball size hailstones in the city. Damage, if any, was unknown.

---

**CHILDRESS COUNTY --- 2.7 SW ARLIE [34.69, -100.11]**

	05/27/13 17:10 CST	0	Thunderstorm Wind (EG 52 kt)
	05/27/13 17:10 CST	0	Source: COOP Observer

An NWS COOP observer located 20 miles NNE of Childress estimated wind gusts as high as 60 mph.

## Storm Data and Unusual Weather Phenomena - May 2013

Location	Date/Time	Deaths & Injuries	Property & Crop Dmg	Event Type and Details
<b>DICKENS COUNTY --- 1.3 SSW ELTON [33.70, -100.84]</b>				
	05/27/13 17:10 CST	0		Hail (1.75 in)
	05/27/13 17:10 CST	0		Source: Trained Spotter
A trained spotter estimated golf ball size hail five miles north of Dickens. No damage was reported.				
<b>GARZA COUNTY --- 0.7 N POST [33.19, -101.38]</b>				
	05/27/13 17:26 CST	0		Hail (1.75 in)
	05/27/13 17:30 CST	0		Source: Law Enforcement
Law enforcement personnel in Post estimated golf ball size hail. The extent of any damage was not known.				
<b>DICKENS COUNTY --- 2.4 ENE AFTON [33.76, -100.76]</b>				
	05/27/13 17:30 CST	0		Hail (1.00 in)
	05/27/13 17:30 CST	0		Source: Trained Spotter
A trained spotter estimated quarter size hail three miles east of Afton. No reports of damage were received.				
<b>The dryline mixed east of the Caprock Escarpment by late afternoon, creating an area of enhanced convergence across the Rolling Plains and extreme southeastern Texas Panhandle. Decreasing heights and cooling aloft allowed for sufficient instability to aid in generating scattered thunderstorms with large to giant size hail up to baseball size.</b>				
<b>PARMER COUNTY --- 0.9 NE FRIONA [34.64, -102.72]</b>				
	05/28/13 14:37 CST	0		Hail (1.00 in)
	05/28/13 14:37 CST	0		Source: COOP Observer
An NWS COOP observer estimated a brief period of quarter size hail. No damage was reported.				
<b>PARMER COUNTY --- 7.4 W LAZBUDDIE [34.39, -102.75]</b>				
	05/28/13 14:45 CST	0		Hail (1.00 in)
	05/28/13 14:45 CST	0		Source: Public
The public estimated quarter size hail eight miles west of Lazbuddie. No damage was reported.				
<b>PARMER COUNTY --- 4.5 SSE HUB [34.47, -102.72]</b>				
	05/28/13 15:19 CST	0		Hail (1.25 in)
	05/28/13 15:19 CST	0		Source: NWS Employee
An off-duty NWS employee estimated 1.25 inch diameter hail 12 miles south of Friona. No damage was observed.				
<b>PARMER COUNTY --- 0.6 E BOVINA [34.52, -102.89]</b>				
	05/28/13 15:25 CST	0		Hail (1.00 in)
	05/28/13 15:25 CST	0		Source: County Official
A city official in Bovina estimated pea to quarter size hail. No damage was reported.				
<b>PARMER COUNTY --- 1.3 WNW FRIONA BENDER ARPK [34.66, -102.70]</b>				
	05/28/13 15:30 CST	0		Thunderstorm Wind (MG 52 kt)
	05/28/13 15:40 CST	0		Source: Mesonet
A Texas Tech University West Texas Mesonet site located two miles northeast of Friona measured two separate severe wind gusts. The first was 58 mph at 1530 CST and the second of 60 mph occurred at 1540 CST.				
<b>PARMER COUNTY --- 6.7 WNW LAZBUDDIE [34.41, -102.73]</b>				
	05/28/13 15:34 CST	0		Hail (2.21 in)
	05/28/13 15:34 CST	0		Source: Storm Chaser
A storm chaser measured 2.21 inch diameter hail 12 miles north of Muleshoe. No reports of damage were received.				
<b>PARMER COUNTY --- 0.9 NE FRIONA [34.64, -102.72]</b>				



## Storm Data and Unusual Weather Phenomena - May 2013

Location	Date/Time	Deaths & Injuries	Property & Crop Dmg	Event Type and Details
	05/28/13 15:44 CST		0	Hail (1.00 in)
	05/28/13 15:44 CST		0	Source: Fire Department/Rescue

Volunteers from the Friona Fire Department estimated quarter size hail. No damage was reported.

**PARMER COUNTY --- 0.9 NE FRIONA [34.64, -102.72], 1.8 ESE FRIONA BENDER ARPK [34.64, -102.65]**

	05/28/13 16:09 CST		75K	Hail (1.75 in)
	05/28/13 16:26 CST		0	Source: Emergency Manager

Multiple reports of large hail ranging from quarter size to golf ball size were received from Friona to about four miles east of Friona between 1609 and 1626 CST. Minor damage to vehicles and homes in Friona was common. The extent of damage to area crops, particularly young corn, was unknown.

**PARMER COUNTY --- 13.8 NW PARMERTON [34.72, -102.98]**

	05/28/13 16:57 CST		0	Hail (2.50 in)
	05/28/13 16:57 CST		0	Source: Fire Department/Rescue

After the first round of severe thunderstorms drifted northeast of Friona and dissipated, the retreating dryline ignited a more robust supercell thunderstorm near Rhea. This storm produce very large hail to tennis ball size four miles north-northwest of Rhea, reported by the local volunteer fire department. Damage from the hail was unknown. Shortly after crossing into Deaf Smith County, this supercell produced a tornado followed by more instances of very large hail.

**PARMER COUNTY --- 10.1 NW PARMERTON [34.67, -102.95]**

	05/28/13 17:15 CST		0	Hail (1.75 in)
	05/28/13 17:21 CST		0	Source: Fire Department/Rescue

The Rhea fire department estimated golf ball size hail, lasting around six minutes. Damage, if any, was unknown.

**A long-lived discrete supercell thunderstorm developed ahead of a dryline and approaching shortwave trough during the mid to late afternoon in Parmer County. Steady northward moisture advection kept this storm and associated dryline confined to the far southwest Texas Panhandle before the upper trough pushed it farther north in the Panhandle. Large hail up to tennis ball size, wind gusts to 60 mph, and brief lowerings in the form of funnel clouds and wall clouds were reported with this storm.**

**BRISCOE COUNTY --- SILVERTON [34.47, -101.30]**

	05/29/13 13:55 CST		0	Hail (1.00 in)
	05/29/13 13:58 CST		0	Source: COOP Observer

An NWS COOP observer estimated dime to quarter size hail. No damage was reported.

**FLOYD COUNTY --- 3.4 E LOCKNEY [34.12, -101.37]**

	05/29/13 14:05 CST		0	Hail (1.75 in)
	05/29/13 14:05 CST		0	Source: Public

The public reported golf ball size hail four miles east of Lockney. Damage, if any, was unknown.

**BRISCOE COUNTY --- 3.5 ENE QUITAQUE [34.38, -100.99], 3.8 NNE GASOLINE [34.38, -100.98]**

	05/29/13 14:30 CST		5K	Tornado (EF0, L: 0.68 mi , W: 50 yd)
	05/29/13 14:35 CST		0	Source: Public

The first of two landspout tornadoes this afternoon developed just west of Valley Schools in far southeast Briscoe County and moved slowly eastward causing EF-0 damage to a barn. This tornado later passed within 1/4 mile of the Valley Schools' football field and was photographed and videoed by some members of the school faculty.

**HALL COUNTY --- 2.4 SW TURKEY [34.38, -100.91], 1.8 SW TURKEY [34.38, -100.90]**

	05/29/13 14:44 CST		0	Tornado (EF0, L: 0.56 mi , W: 50 yd)
	05/29/13 14:46 CST		0	Source: Fire Department/Rescue

Members of the Turkey Fire Department reported a landspout tornado about one mile south of Turkey. The landspout remained over open land for about two minutes before dissipating and was witnessed by many area residents including those as far away as Quitaque.

**HALL COUNTY --- 1.8 ENE ELI [34.69, -100.59], 5.3 ESE MEMPHIS MUNI ARPT [34.69, -100.44]**

	05/29/13 16:00 CST		0	Hail (2.25 in)
	05/29/13 16:19 CST		0	Source: Storm Chaser

## Storm Data and Unusual Weather Phenomena - May 2013

Location	Date/Time	Deaths & Injuries	Property & Crop Dmg	Event Type and Details
----------	-----------	-------------------	---------------------	------------------------

A hailswath with large hailstones between quarter size and 2.25 inches in diameter fell from about four miles southwest of Memphis to six miles east-southeast of Memphis. Hail in Memphis was reported by the Fire Department to be pea to dime size. No damage was reported.

---

**HALL COUNTY --- 0.9 NW MEMPHIS [34.73, -100.54]**

05/29/13 16:40 CST	0	Hail (1.50 in)
05/29/13 16:42 CST	0	Source: Emergency Manager

Less than an hour after a thunderstorm with large hail pummeled rural areas southwest and southeast of Memphis, another severe thunderstorm produced large hail up to 1.5 inches in diameter - this time in the city of Memphis. The city emergency manager reported the hail fell for two minutes, but the extent of damage was unknown.

**A strong upper level trough moved into west Texas during the early afternoon hours, resulting in convective initiation along the dryline. This large scale forcing was too far north to assist in breaking the cap farther south, which kept activity from developing farther south into the Rolling Plains. Large hail and an isolated tornado occurred along this line before dry air swept in and brought an end to storms across the far southeastern Panhandle.**

# Storm Data and Unusual Weather Phenomena - May 2013

Location	Date/Time	Deaths & Injuries	Property & Crop Dmg	Event Type and Details
				

## Storm Data and Unusual Weather Phenomena - May 2013

Location	Date/Time	Deaths & Injuries	Property & Crop Dmg	Event Type and Details
				

*View from Quitaque, TX looking east at a landspout near Turkey, TX. This brief tornado remained over open land and was witnessed by many area residents. Photo credit unknown.*