

## Storm Data and Unusual Weather Phenomena - July 2017

| Location | Date/Time | Deaths & Injuries | Property & Crop Dmg | Event Type and Details |
|----------|-----------|-------------------|---------------------|------------------------|
|----------|-----------|-------------------|---------------------|------------------------|

---

### TEXAS, South Panhandle

---

**HOCKLEY COUNTY --- 0.7 SW ANTON [33.81, -102.18], 0.1 SSW ANTON [33.82, -102.17], 1.3 ESE ANTON [33.82, -102.15], 1.9 SSE ANTON [33.79, -102.16]**

|                    |   |                                 |
|--------------------|---|---------------------------------|
| 07/01/17 00:00 CST | 0 | Flash Flood (due to Heavy Rain) |
| 07/01/17 02:00 CST | 0 | Source: Law Enforcement         |

Flash flooding in Anton that began late in the night on June 30th continued for a few additional hours into July 1st. Multiple homes received water inundation damage and the city was marooned by high water for much of the overnight. Monetary damage from this event is not repeated here, but is available in the June 30th entry.

---

**LUBBOCK COUNTY --- 3.0 E BURRIS [33.52, -101.73], 3.0 E BURRIS [33.53, -101.73], 3.4 E BURRIS [33.54, -101.72], 3.7 E BURRIS [33.54, -101.72]**

|                    |   |                                 |
|--------------------|---|---------------------------------|
| 07/01/17 00:00 CST | 0 | Flash Flood (due to Heavy Rain) |
| 07/01/17 03:00 CST | 0 | Source: Department of Highways  |

Sections of FM Road 835 and County Road 7000 began to flood before midnight CST on July 1st, and continued to see rising waters for a short while later. The flash flooding was focused primarily along the west end of Buffalo Springs Lake. The roads were eventually re-opened by daybreak once floodwaters had fully receded.

---

**LUBBOCK COUNTY --- 1.3 ESE LUBBOCK [33.57, -101.83]**

|                    |     |                                |
|--------------------|-----|--------------------------------|
| 07/01/17 00:30 CST | 45K | Lightning                      |
| 07/01/17 00:30 CST | 0   | Source: Fire Department/Rescue |

Lightning struck a house and adjacent tree in east-central Lubbock. The single story family residence became heavily consumed by fire before fire crews could respond. Fire officials were able to extricate two people; one who later succumbed to their injuries at the hospital.

---

**HOCKLEY COUNTY --- 4.0 S LEVELLAND [33.52, -102.37]**

|                    |   |                              |
|--------------------|---|------------------------------|
| 07/01/17 00:50 CST | 0 | Thunderstorm Wind (MG 70 kt) |
| 07/01/17 00:50 CST | 0 | Source: Mesonet              |

Measured by a Texas Tech University West Texas mesonet station south of Levelland.

---

**LYNN COUNTY --- NEW HOME [33.32, -101.92]**

|                    |   |                              |
|--------------------|---|------------------------------|
| 07/01/17 01:30 CST | 0 | Thunderstorm Wind (MG 56 kt) |
| 07/01/17 01:30 CST | 0 | Source: Mesonet              |

Measured by a Texas Tech University West Texas mesonet station in New Home.

**As the significant nighttime storms of June 30 progressed across the southern South Plains, they gradually waned as a squall line developed in their advance around midnight CST on July 1. This line of storms produced a few severe wind gusts and widespread heavy rainfall before exiting south of the region before daybreak. Flash flooding, which began before midnight CST on July 1st, continued for a few additional hours in Anton (Hockley County) and near Buffalo Springs Lake (Lubbock County). Also, lightning was responsible for a fatal house fire in east Lubbock.**

---

**HALE COUNTY --- 0.5 ENE ABERNATHY [33.83, -101.84], 2.1 NNE ABERNATHY MUNI ARPT [33.88, -101.76]**

|                    |     |                              |
|--------------------|-----|------------------------------|
| 07/02/17 00:25 CST | 30K | Thunderstorm Wind (MG 56 kt) |
| 07/02/17 00:35 CST | 0   | Source: Utility Company      |

A downburst traveled easterly across southern Hale County accompanied by wind gusts near 70 mph. These winds damaged 12 power poles just northeast of Abernathy that proceeded to disrupt power to much of the city for nearly 18 hours. Later, these storms produced a wind gust to 59 mph at 0035 CST as measured by a Texas Tech University West Texas mesonet station northeast of Abernathy.

---

**HOCKLEY COUNTY --- 6.0 SSW ANTON [33.74, -102.21]**

|                    |   |                              |
|--------------------|---|------------------------------|
| 07/02/17 00:35 CST | 0 | Thunderstorm Wind (MG 51 kt) |
| 07/02/17 00:35 CST | 0 | Source: Mesonet              |

Measured by a Texas Tech University West Texas mesonet station southwest of Anton.

**An overnight complex of thunderstorms rolled southeast over all of the Texas South Plains and delivered very beneficial rainfall to the region. A few downbursts also accompanied this line of storms, one of which damaged several utility poles in southern Hale County.**

---

**BRISCOE COUNTY --- 7.0 ESE SILVERTON [34.43, -101.19]**

## Storm Data and Unusual Weather Phenomena - July 2017

| Location | Date/Time          | Deaths & Injuries | Property & Crop Dmg | Event Type and Details       |
|----------|--------------------|-------------------|---------------------|------------------------------|
|          | 07/03/17 01:39 CST |                   | 0                   | Thunderstorm Wind (MG 50 kt) |
|          | 07/03/17 01:39 CST |                   | 0                   | Source: Mesonet              |

Measured by a Texas Tech University West Texas mesonet.

**A continuation of active northwest flow aloft supported a small squall line that tracked from the south-central Texas Panhandle through the Rolling Plains before daybreak. One severe wind gust was recorded by a Texas Tech University West Texas mesonet in Briscoe County with these storms.**

---

| <b>CASTRO COUNTY --- 1.7 E DIMMITT MUNI ARPT [34.57, -102.29]</b> |                    |  |   |                              |
|---|--------------------|--|---|------------------------------|
|   | 07/03/17 17:10 CST |  | 0 | Thunderstorm Wind (MG 61 kt) |
|   | 07/03/17 17:10 CST |  | 0 | Source: Mesonet              |

Measured by a Texas Tech University West Texas mesonet near Dimmitt.

---

| <b>LUBBOCK COUNTY --- (LBB)LUBBOCK INTL AR [33.67, -101.82]</b> |                    |  |   |                              |
|---|--------------------|--|---|------------------------------|
|   | 07/03/17 18:46 CST |  | 0 | Thunderstorm Wind (MG 50 kt) |
|   | 07/03/17 18:46 CST |  | 0 | Source: ASOS                 |

Measured by the ASOS at Lubbock International Airport.

---

| <b>FLOYD COUNTY --- 1.4 N FLOYDADA [34.00, -101.33]</b> |                    |  |   |                              |
|---|--------------------|--|---|------------------------------|
|   | 07/03/17 18:50 CST |  | 0 | Thunderstorm Wind (MG 54 kt) |
|   | 07/03/17 18:50 CST |  | 0 | Source: Mesonet              |

Measured by a Texas Tech University West Texas mesonet near Floydada.

---

| <b>HOCKLEY COUNTY --- 1.1 E LEVELLAND [33.58, -102.35]</b> |                    |  |   |                         |
|--|--------------------|--|---|-------------------------|
|  | 07/03/17 18:55 CST |  | 0 | Hail (1.00 in)          |
|  | 07/03/17 18:55 CST |  | 0 | Source: Trained Spotter |

Hail up to the size of quarters was reported. Damage was not known.

---

| <b>CROSBY COUNTY --- 7.1 SSE CROSBYTON MUNI ARPT [33.53, -101.17]</b> |                    |  |   |                              |
|---|--------------------|--|---|------------------------------|
|   | 07/03/17 19:50 CST |  | 0 | Thunderstorm Wind (MG 51 kt) |
|   | 07/03/17 19:50 CST |  | 0 | Source: Mesonet              |

Measured by a Texas Tech University West Texas mesonet near White River Lake.

---

| <b>DICKENS COUNTY --- 1.7 W SPUR [33.48, -100.88]</b> |                    |  |   |                              |
|---|--------------------|--|---|------------------------------|
|   | 07/03/17 20:15 CST |  | 0 | Thunderstorm Wind (MG 56 kt) |
|   | 07/03/17 20:25 CST |  | 0 | Source: Mesonet              |

Severe thunderstorm wind gusts occurred for 10 minutes as measured by a Texas Tech University West Texas mesonet near Spur.

---

| <b>(TX-Z026) CHILDRESS</b> |                    |  |     |            |
|----------------------------|--------------------|--|-----|------------|
|                            | 07/03/17 20:50 CST |  | 70K | Dust Storm |
|                            | 07/03/17 20:55 CST |  | 0   |            |

---

| <b>LUBBOCK COUNTY --- 2.7 NE SLATON [33.46, -101.62]</b> |                    |  |   |                              |
|--|--------------------|--|---|------------------------------|
|  | 07/04/17 01:20 CST |  | 0 | Thunderstorm Wind (MG 52 kt) |
|  | 07/04/17 01:20 CST |  | 0 | Source: Mesonet              |

A heat burst produced brief severe wind gusts as measured by a Texas Tech University West Texas mesonet near Slaton.

---

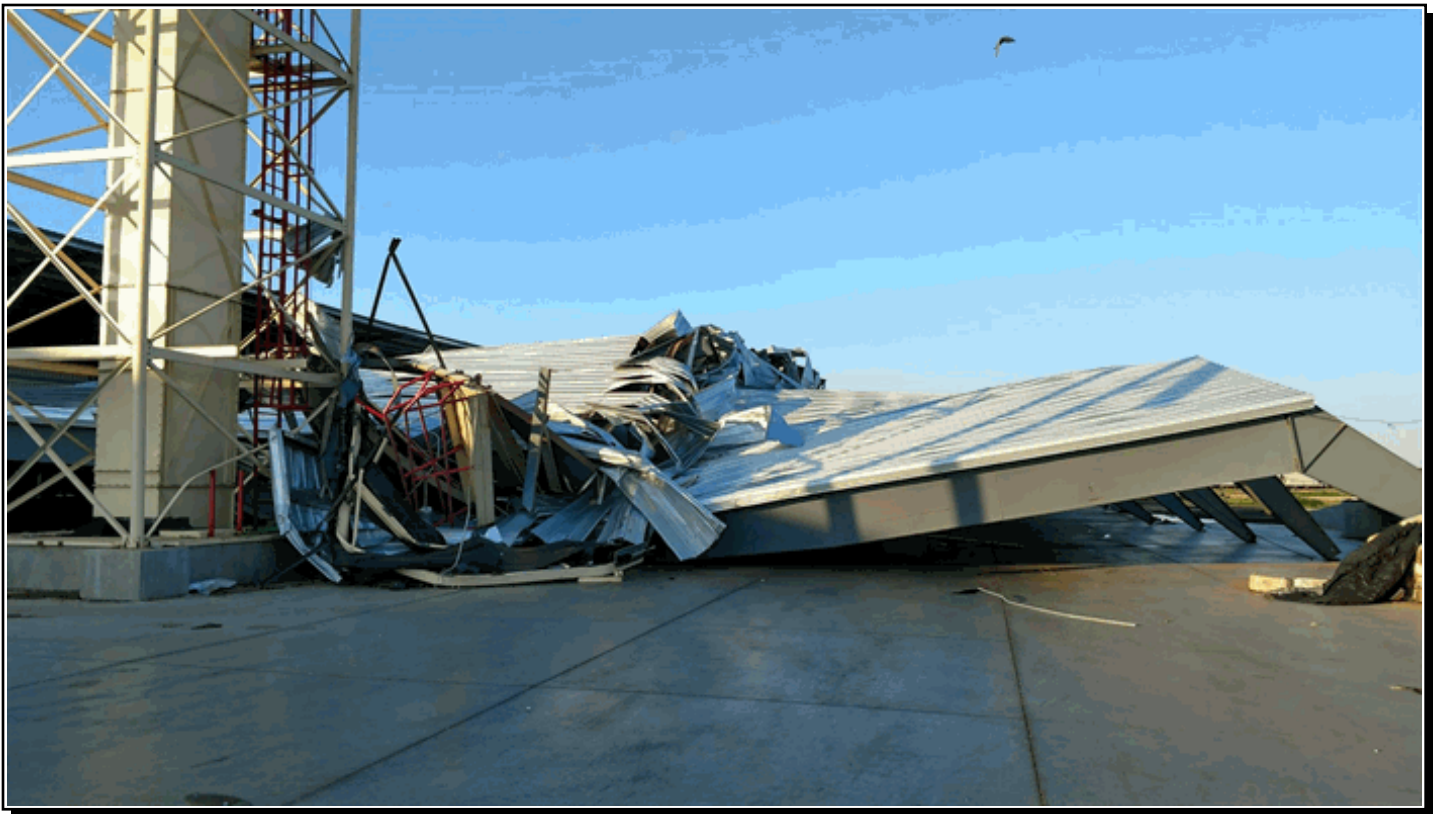
| <b>HOCKLEY COUNTY --- 2.8 WNW LEVELLAND [33.59, -102.41], 2.4 ENE LEVELLAND [33.59, -102.33]</b> |                    |   |    |                              |
|--|--------------------|---|----|------------------------------|
|  | 07/04/17 02:40 CST |   | 1M | Thunderstorm Wind (EG 96 kt) |
|  | 07/04/17 02:45 CST | 1 | 0  | Source: NWS Storm Survey     |

## Storm Data and Unusual Weather Phenomena - July 2017

| Location | Date/Time | Deaths & Injuries | Property & Crop Dmg | Event Type and Details |
|----------|-----------|-------------------|---------------------|------------------------|
|----------|-----------|-------------------|---------------------|------------------------|

A significant downburst with winds estimated as high as 110 mph struck the northern half of the city of Levelland causing widespread damage to buildings, trees, utility poles, and even rolling two cars from the road. An NWS damage survey team determined the most intense winds were focused about 2.5 miles east of downtown Levelland. It was in this area that a pole barn's metal support beams were ripped from their anchors and a car along State Highway 114 was blown off the road and flipped over. The driver of the car was shaken, but not injured. Damage elsewhere was consistent with winds of 70 to 90 mph and was comprised of peeled back roofs on some buildings and mobile homes, some street signs bent flat to the ground, many large trees snapped at their base, and even a trampoline wrapped around a power pole. Three industrial buildings sustained substantial damage. Sections of streets were so cluttered with structural debris that front-end loaders were required to clear a safe path for travel. One man was injured as the awning he was grilling under collapsed and dragged him a short distance. Approximately 40 power poles were damaged leading to some residents being without power for 11 hours.

Late afternoon thunderstorms developed from Tucumcari to Clovis, NM and quickly congealed into a squall line while trekking southeast across the Texas South Plains through the evening. These storms produced several instances of severe wind gusts as they traversed the Texas South Plains, in addition to a wall of dust followed by heavy rains and minor flooding. As this squall line decayed after sunset, additional storms fired along its outflow from the southeast Texas Panhandle through the Rolling Plains. One of these storms east of Childress produced a dust storm that contributed to a fatal multi-vehicle accident near Kirkland. After midnight, a small line of showers and some thunderstorms redeveloped over the western South Plains and moved south. Although radar indicated very weak precipitation intensities with this line, a macroburst and possible heat burst developed shortly after 0230 CST on July 4th and proceeded to strike the north and east sides of Levelland with fierce straight-line winds of 80-110 mph. In addition to causing widespread wind damage, two vehicles were overturned by these winds.



*One of four industrial buildings in Levelland, TX that suffered significant damage following a downburst with winds of 80 to 110 mph. Photo courtesy of the Levelland Fire Department.*

---

|  |                    |   |  |                              |
|--|--------------------|---|--|------------------------------|
| <b>PARMER COUNTY --- 0.6 W FRIONA BENDER ARPK [34.65, -102.69]</b> |                    |   |  |                              |
|  | 07/04/17 18:00 CST | 0 |  | Thunderstorm Wind (MG 54 kt) |
|  | 07/04/17 18:00 CST | 0 |  | Source: Mesonet              |

Measured by a Texas Tech University West Texas mesonet near Friona.

---

|   |                    |   |  |                       |
|---|--------------------|---|--|-----------------------|
| <b>KENT COUNTY --- 0.4 S JAYTON [33.24, -100.58], 0.6 E JAYTON [33.25, -100.57]</b> |                    |   |  |                       |
|   | 07/04/17 18:23 CST | 0 |  | Hail (1.25 in)        |
|   | 07/04/17 18:37 CST | 0 |  | Source: COOP Observer |

## Storm Data and Unusual Weather Phenomena - July 2017

| Location   | Date/Time | Deaths & Injuries | Property & Crop Dmg | Event Type and Details |
|--|-----------|-------------------|---------------------|------------------------|
| Hail from pea to dime size fell near the Kent County Sheriff's Office, with half dollar size hail falling a few blocks distant at a NWS COOP observer's house. No damage was reported. |           |                   |                     |                        |

**CASTRO COUNTY --- 1.7 E DIMMITT MUNI ARPT [34.57, -102.29]**

|  |                    |  |   |                              |
|--|--------------------|--|---|------------------------------|
|  | 07/04/17 18:35 CST |  | 0 | Thunderstorm Wind (MG 61 kt) |
|  | 07/04/17 18:45 CST |  | 0 | Source: Mesonet              |

A Texas Tech University West Texas mesonet near Dimmitt measured gusts to 70 mph at 1835 CST and 60 mph at 1845 CST.

**LAMB COUNTY --- 0.6 W SPRINGLAKE [34.23, -102.31]**

|  |                    |  |     |                              |
|--|--------------------|--|-----|------------------------------|
|  | 07/04/17 18:41 CST |  | 10K | Thunderstorm Wind (EG 61 kt) |
|  | 07/04/17 18:41 CST |  | 0   | Source: Broadcast Media      |

Broadcast media relayed reports of a wall of dust with damaging winds in Springlake. Damage was mostly light and confined to small tree limbs and fencing.

**CASTRO COUNTY --- 2.8 NNE HART [34.42, -102.11]**

|  |                    |  |   |                              |
|--|--------------------|--|---|------------------------------|
|  | 07/04/17 18:50 CST |  | 0 | Thunderstorm Wind (MG 54 kt) |
|  | 07/04/17 18:50 CST |  | 0 | Source: Mesonet              |

Measured by a Texas Tech University West Texas mesonet near Hart.

**LAMB COUNTY --- 4.5 NNE HART CAMP [34.09, -102.12], 1.0 NE AMHERST [34.03, -102.41]**

|  |                    |  |     |                              |
|--|--------------------|--|-----|------------------------------|
|  | 07/04/17 19:14 CST |  | 15K | Thunderstorm Wind (MG 56 kt) |
|  | 07/04/17 19:35 CST |  | 0   | Source: Mesonet              |

A series of downbursts tracked south through portions of Lamb County accompanied by a wall of dust. These winds overturned a few center pivots along Highway 385 between Springlake and Littlefield. Winds were measured as high as 64 mph at 1920 CST by a Texas Tech University West Texas mesonet near Amherst. Another mesonet near Olton measured wind gusts to 62 mph and 59 mph at 1914 CST and 1935 CST, respectively.

**COCHRAN COUNTY --- 0.6 W MORTON COCHRAN CO AR [33.73, -102.74]**

|  |                    |  |   |                              |
|--|--------------------|--|---|------------------------------|
|  | 07/04/17 19:30 CST |  | 0 | Thunderstorm Wind (MG 50 kt) |
|  | 07/04/17 19:30 CST |  | 0 | Source: Mesonet              |

Measured by a Texas Tech University West Texas mesonet near Morton.

**COCHRAN COUNTY --- 14.5 S WHITEFACE [33.39, -102.61]**

|  |                    |  |   |                              |
|--|--------------------|--|---|------------------------------|
|  | 07/04/17 20:05 CST |  | 0 | Thunderstorm Wind (MG 56 kt) |
|  | 07/04/17 20:05 CST |  | 0 | Source: Mesonet              |

Measured by a Texas Tech University West Texas mesonet near Sundown.

**HOCKLEY COUNTY --- 1.5 SSE LEVELLAND MUNI ARPT [33.53, -102.36]**

|  |                    |  |   |                              |
|--|--------------------|--|---|------------------------------|
|  | 07/04/17 20:05 CST |  | 0 | Thunderstorm Wind (MG 50 kt) |
|  | 07/04/17 20:05 CST |  | 0 | Source: Mesonet              |

Measured by a Texas Tech University West Texas mesonet near Levelland.

**LUBBOCK COUNTY --- (LBB)LUBBOCK INTL AR [33.67, -101.82], 6.0 SSW WOLFFORTH [33.42, -102.06]**

|  |                    |  |   |                              |
|--|--------------------|--|---|------------------------------|
|  | 07/04/17 20:11 CST |  | 0 | Thunderstorm Wind (MG 50 kt) |
|  | 07/04/17 20:35 CST |  | 0 | Source: ASOS                 |

Downburst winds of 58 mph were recorded at the Lubbock ASOS at 2011 CST, and also at a Texas Tech University West Texas mesonet near Wolfforth at 2035 CST. A wall of dust ahead of these winds briefly dropped visibility to near zero across rural areas of Lubbock County.

**HALE COUNTY --- 8.8 SE SETH WARD [34.13, -101.57]**

|  |                    |  |   |                              |
|--|--------------------|--|---|------------------------------|
|  | 07/04/17 20:15 CST |  | 0 | Thunderstorm Wind (MG 58 kt) |
|  | 07/04/17 20:15 CST |  | 0 | Source: Mesonet              |

Measured by a Texas Tech University West Texas mesonet near Aiken.

**LYNN COUNTY --- 2.1 N TAHOKA [33.21, -101.78]**

## Storm Data and Unusual Weather Phenomena - July 2017

| Location | Date/Time          | Deaths & Injuries | Property & Crop Dmg | Event Type and Details       |
|----------|--------------------|-------------------|---------------------|------------------------------|
|          | 07/04/17 20:52 CST |                   | 0                   | Thunderstorm Wind (MG 53 kt) |
|          | 07/04/17 20:52 CST |                   | 0                   | Source: Mesonet              |

Measured by a Texas Tech University West Texas mesonet near Tahoka.

**LUBBOCK COUNTY --- 1.9 SSW WEST CARLISLE [33.55, -101.96], 3.9 ESE WOLFFORTH [33.47, -101.96], 1.9 WSW LUBBOCK AIRPARK [33.47, -101.85], 2.7 NW LUBBOCK [33.60, -101.89]**

|                    |   |                                |
|--------------------|---|--------------------------------|
| 07/04/17 21:00 CST | 0 | Flood (due to Heavy Rain)      |
| 07/04/17 23:00 CST | 0 | Source: Department of Highways |

Moderate to heavy rain for about 20 minutes fell across west and southwest areas of Lubbock and resulted in widespread street flooding. Some intersections remained flooded the following morning with a few inches of standing water.

**Unfortunate for many Fourth of July revelers, yet another large squall line developed this evening in the southwest Texas Panhandle and proceeded to overspread all of the Caprock and portions of the Rolling Plains through the night. Numerous severe wind gusts, widespread blowing dust and torrential downpours accompanied this squall line at times. Sporadic wind damage was most concentrated in parts of Lamb County. These storms forced many city and private individuals to cancel or reschedule their fireworks festivities, with Lubbock unable to perform their festival show until July 16.**

**LUBBOCK COUNTY --- (LBB)LUBBOCK INTL AR [33.67, -101.82], 1.4 NE LUBBOCK [33.59, -101.83]**

|                    |   |              |
|--------------------|---|--------------|
| 07/16/17 12:36 CST | 0 | Heavy Rain   |
| 07/16/17 13:23 CST | 0 | Source: ASOS |

Heavy rain of 1.76 inches was measured at the Lubbock International Airport from a stationary thunderstorm . Radar estimated similar heavy rains extending south to downtown Lubbock resulting in minor flooding of many streets including ponds at Mackenzie Park. The heavy rain forced the cancellation of a large outdoor concert at the park in advance of the 4th of July fireworks re-do scheduled for the evening.

**SWISHER COUNTY --- 2.0 ENE TULIA [34.54, -101.74]**

|                    |   |                              |
|--------------------|---|------------------------------|
| 07/16/17 13:05 CST | 0 | Thunderstorm Wind (MG 50 kt) |
| 07/16/17 13:05 CST | 0 | Source: Mesonet              |

Measured by a Texas Tech University West Texas mesonet northeast of Tulia.

**A pulse thunderstorm collapsed near Tulia (Swisher County) early this afternoon resulting in a severe wind gust to 58 mph. Other storms throughout the region produced moderate to heavy rainfall and minor flooding, including in the city of Lubbock.**



## Storm Data and Unusual Weather Phenomena - July 2017

| Location | Date/Time | Deaths & Injuries | Property & Crop Dmg | Event Type and Details |
|----------|-----------|-------------------|---------------------|------------------------|
|----------|-----------|-------------------|---------------------|------------------------|

*Heavy rain of nearly two inches in a short time produced minor flooding in Lubbock. These picnic goers at Mackenzie Park were undeterred by the standing water. Photo courtesy of the Lubbock Avalanche Journal.*

---

**GARZA COUNTY --- 1.5 NNE POST [33.20, -101.37]**

|  |                    |   |  |                              |
|--|--------------------|---|--|------------------------------|
|  | 07/22/17 17:05 CST | 0 |  | Thunderstorm Wind (MG 53 kt) |
|  | 07/22/17 17:05 CST | 0 |  | Source: Mesonet              |

Measured by a Texas Tech University West Texas mesonet northeast of Post.

---

**GARZA COUNTY --- 5.6 SSW GRAHAM CHAPEL [33.08, -101.52]**

|  |                    |   |  |                              |
|--|--------------------|---|--|------------------------------|
|  | 07/22/17 17:20 CST | 0 |  | Thunderstorm Wind (MG 51 kt) |
|  | 07/22/17 17:20 CST | 0 |  | Source: Mesonet              |

Measured by a Texas Tech University West Texas mesonet near Graham.

**Pulse-type severe thunderstorms produced two severe wind gusts in Garza County this evening. No wind damage occurred.**

---

**DICKENS COUNTY --- 3.3 WSW ELTON [33.70, -100.88]**

|  |                    |   |  |                              |
|--|--------------------|---|--|------------------------------|
|  | 07/29/17 14:20 CST | 0 |  | Thunderstorm Wind (EG 70 kt) |
|  | 07/29/17 14:20 CST | 0 |  | Source: Other Federal Agency |

A USDA employee forwarded photos of damage to a few small outbuildings at a ranch northwest of Dickens . The roof of a small pole barn was blown a short distance, while another roof had a small section peeled off. The damage was deemed consistent with wind speeds of 70 to 80 mph.

**Early this afternoon, a pulse thunderstorm produced a downburst about seven miles northwest of Dickens (Dickens County). Minor damage was observed to a couple small ranch outbuildings.**