



60th Presidential Inauguration Weather Briefing

9:00 AM EST
Tuesday, January 21, 2025

Prepared By WFO Baltimore/Washington



Agenda

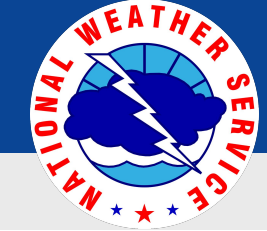
January 21, 2025
9:00 AM EST

- Weather Hazards
- Washington DC Forecast
 - Includes table of forecast weather parameters
- Potomac River Forecast/Ice Analysis
- Tidal Forecast
- Airport/Terminal Aviation Forecasts (DCA and IAD)
- Astronomical Data
- HYSPLIT Plume Model for 12:00 PM EST Today
- Space Weather
- Summary

All Forecasts and resources available at weather.gov/lwx/inauguration

Historical Inauguration Weather Information available at weather.gov/lwx/events_Inauguration





Weather Hazards Overview

January 21, 2025
9:00 AM EST

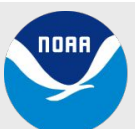
Washington DC Metropolitan Area - Through Wednesday, January 22, 2025

Today into Tonight

- **Cold Weather Advisory** in effect for Washington D.C. Metro through tonight.
 - Bitterly cold wind chills expected with wind chills in the teens during the day, dropping to near zero tonight.
- Slight chance (20%) for accumulating snow from snow showers this evening.
 - Expectation is just for a few flurries in DC, with a light accumulation in southern Maryland.
 - Reasonable worst case scenario is for light snow 7pm-midnight, less than 1".

Wednesday

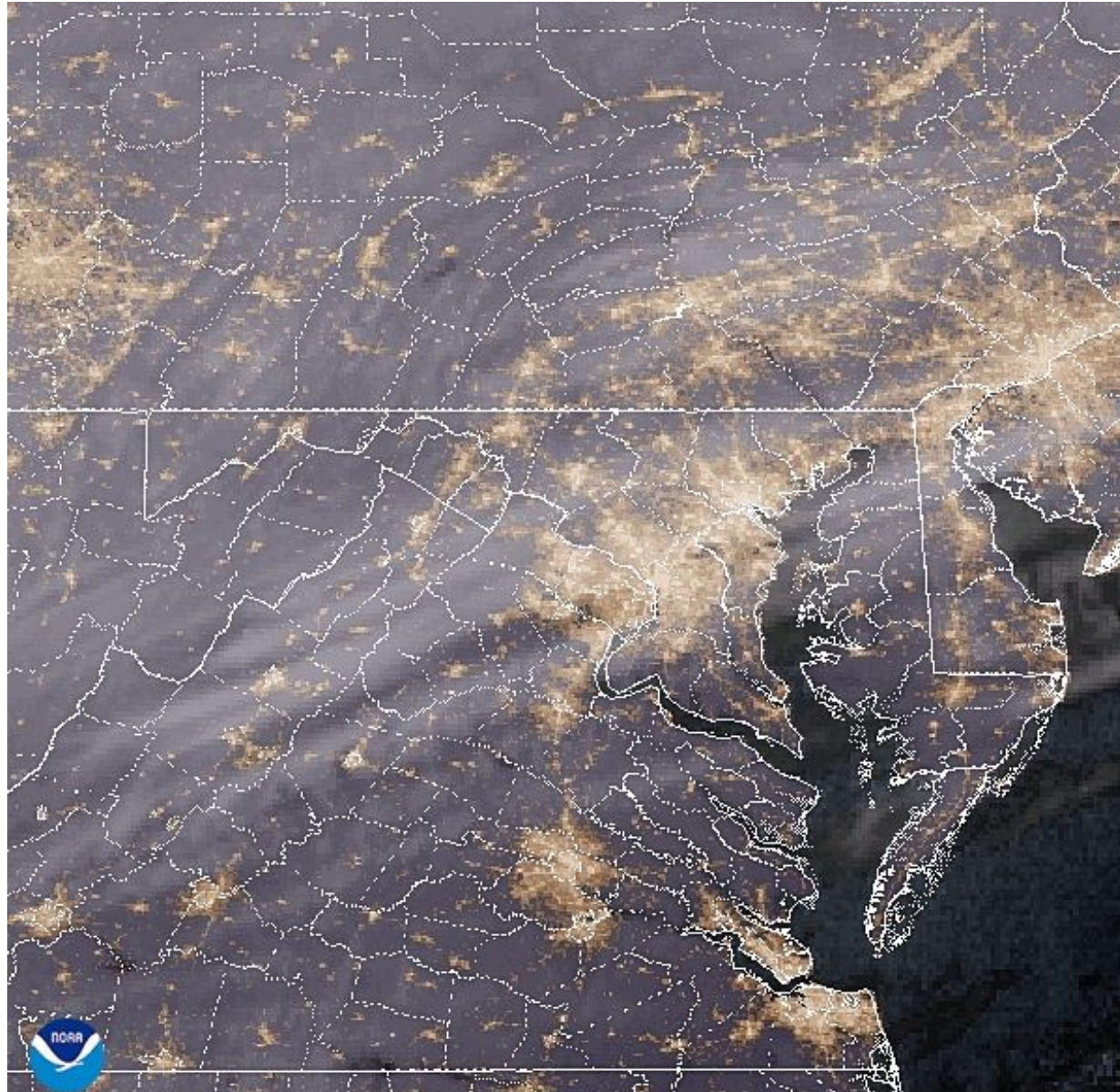
- **Cold Weather Advisory** continues through Wednesday.



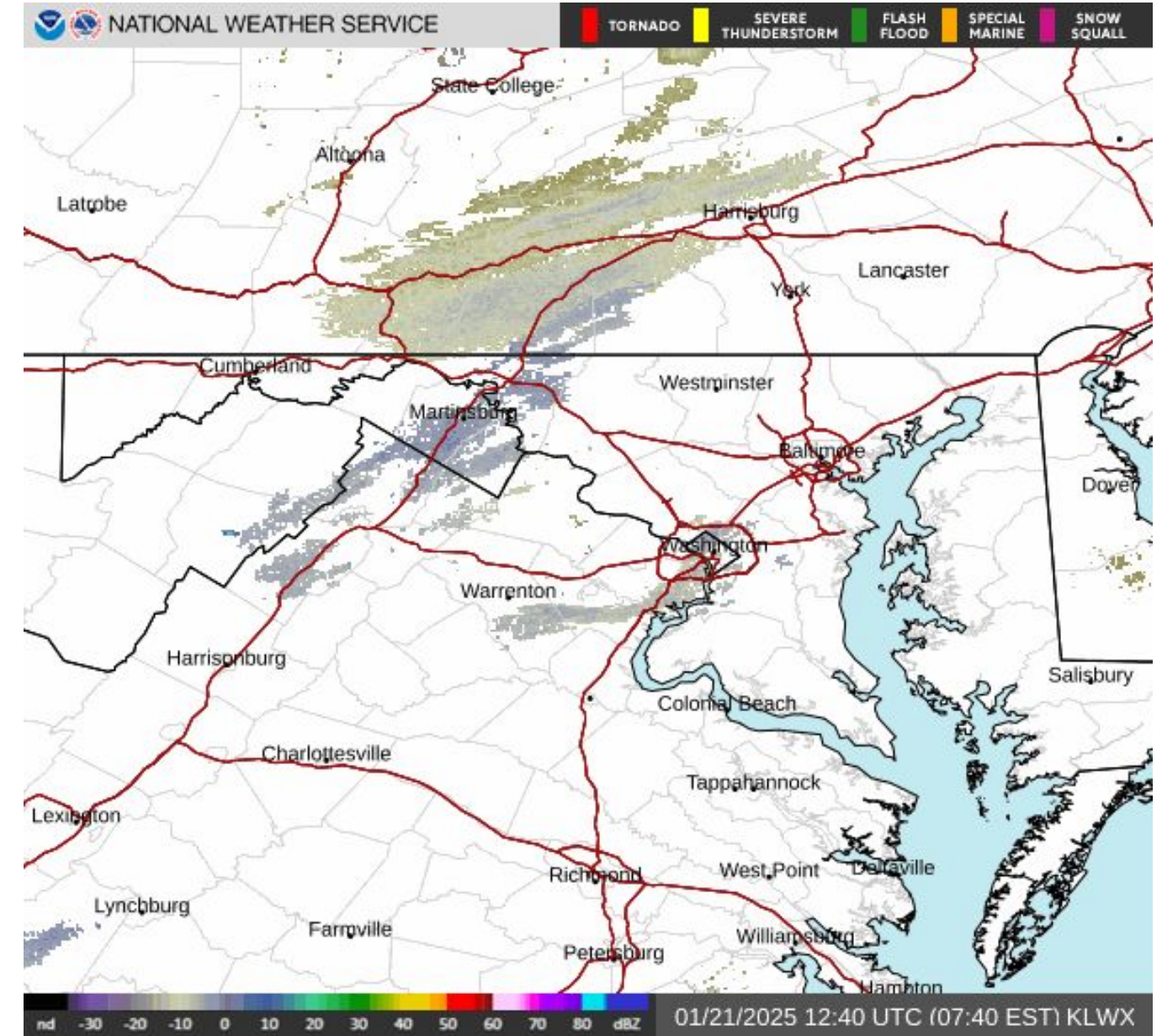


Current Radar and Satellite Imagery

January 21, 2025
9:00 AM EST



21 Jan 2025 08:50Z - NOAA/NESDIS/STAR - LWX - GEOCOLOR Composite



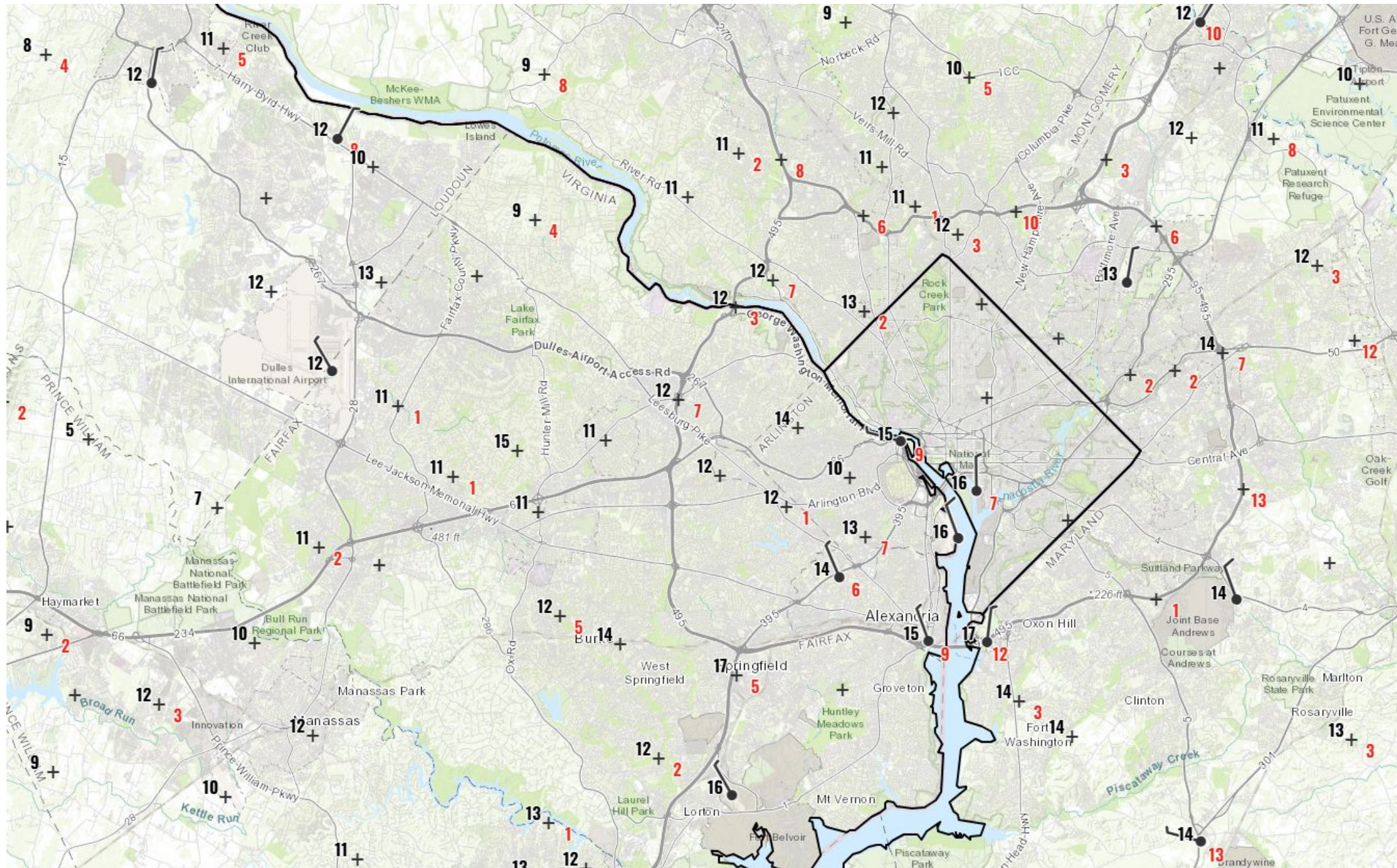


Current Weather Conditions

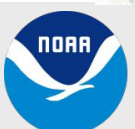
January 21, 2025

9:00 AM EST

8 AM EST Observations (Temperature and Wind Gusts)



The map shows
current
temperatures
(**black**) and wind
gusts (**red**)



National Oceanic and
Atmospheric Administration

U.S. Department of Commerce

National Weather Service
Baltimore/Washington



U.S. Capitol Forecast (Next 24 Hours)

January 21, 2025
9:00 AM EST

Full table always available at weather.gov/lwx/inauguration

U.S. Capitol																Tue 1/21/2025									
	9am	10am	11am	12pm	1pm	2pm	3pm	4pm	5pm	6pm	7pm	8pm	9pm	10pm	11pm	12am	1am	2am	3am	4am	5am	6am	7am	8am	9am
Temperature	15°F	16°F	18°F	19°F	20°F	21°F	21°F	22°F	21°F	21°F	20°F	20°F	19°F	18°F	18°F	17°F	17°F	16°F	15°F	14°F	13°F	12°F	11°F	11°F	12°F
Sky Cover	86%	91%	88%	83%	81%	84%	90%	93%	94%	93%	94%	93%	93%	85%	70%	50%	30%	23%	16%	13%	9%	7%	6%	5%	3%
Wind Chill	8°F	9°F	11°F	12°F	13°F	15°F	16°F	17°F	21°F	21°F	20°F	20°F	19°F	18°F	18°F	17°F	17°F	10°F	6°F	4°F	3°F	1°F	-1°F	-1°F	0°F
Wind Direction	NNW	NNW	NW	NW	NW	NW	WNW	WNW	W	N	N	N	N	NNW	WNW	WNW	NW	NW	NW	NW	NNW	NNW	NW	NNW	NNW
Wind Speed	5mph	5mph	5mph	5mph	5mph	5mph	3mph	3mph	2mph	2mph	2mph	2mph	2mph	2mph	2mph	2mph	2mph	3mph	6mph	7mph	7mph	7mph	8mph	8mph	8mph
Wind Gust Speed	10mph	9mph	9mph	9mph	9mph	8mph	7mph	6mph	6mph	5mph	5mph	5mph	6mph	6mph	7mph	8mph	9mph	9mph	10mph	12mph	12mph	12mph	12mph	13mph	14mph
Weather Conditions	-	Snow Flurries	Snow Flurries	Snow Flurries	Snow Flurries	Snow Flurries	Snow Flurries	Snow Flurries	Snow Flurries	Snow Flurries	Light Snow Showers	Light Snow Showers	Light Snow Showers	Light Snow Showers	Light Snow Showers	-	-	-	-	-	-	-	-	-	-
Probability of Precipitation	4%	8%	8%	8%	12%	12%	12%	13%	13%	13%	23%	23%	23%	18%	18%	5%	5%	5%	5%	3%	3%	3%	0%	0%	0%
Liquid Precipitation Amount	0in	0in	0in	0in	0in	0in	0in	0in	0in	0in	0in	0in	0in	0in	0in	0in	0in	0in	0in	0in	0in	0in	0in	0in	0in
Ice Accumulation	0in	0in	0in	0in	0in	0in	0in	0in	0in	0in	0in	0in	0in	0in	0in	0in	0in	0in	0in	0in	0in	0in	0in	0in	0in
Snow Accumulation	0in	0in	0in	0in	0in	0in	0in	0in	0in	0in	0in	0in	0in	0in	0in	0in	0in	0in	0in	0in	0in	0in	0in	0in	0in
Ceiling Height	15600ft	12300ft	11900ft	12000ft	11700ft	9700ft	8800ft	6100ft	6600ft	7500ft	7500ft	7100ft	6800ft	6700ft	6600ft	-	-	-	-	-	-	-	-	-	-
Visibility	10.00mi	10.00mi	10.00mi	10.00mi	10.00mi	10.00mi	10.00mi	10.00mi	10.00mi	10.00mi	10.00mi	10.00mi	10.00mi	10.00mi	10.00mi	10.00mi	10.00mi	10.00mi	10.00mi	10.00mi	10.00mi	10.00mi	10.00mi	10.00mi	10.00mi
Probability of Thunder	0	0	0	0	0	0	0	0	0	0	0	0	0	0	0	0	0	0	0	0	0	0	0	0	0
NWS Hazardous Weather Alerts	Cold Weather Advisory	Cold Weather Advisory	Cold Weather Advisory	Cold Weather Advisory	Cold Weather Advisory	Cold Weather Advisory	Cold Weather Advisory	Cold Weather Advisory	Cold Weather Advisory	Cold Weather Advisory	Cold Weather Advisory	Cold Weather Advisory	Cold Weather Advisory	Cold Weather Advisory	Cold Weather Advisory	Cold Weather Advisory	Cold Weather Advisory	Cold Weather Advisory	Cold Weather Advisory	Cold Weather Advisory	Cold Weather Advisory	Cold Weather Advisory	Cold Weather Advisory	Cold Weather Advisory	Cold Weather Advisory

None

Limited

Elevated

Significant

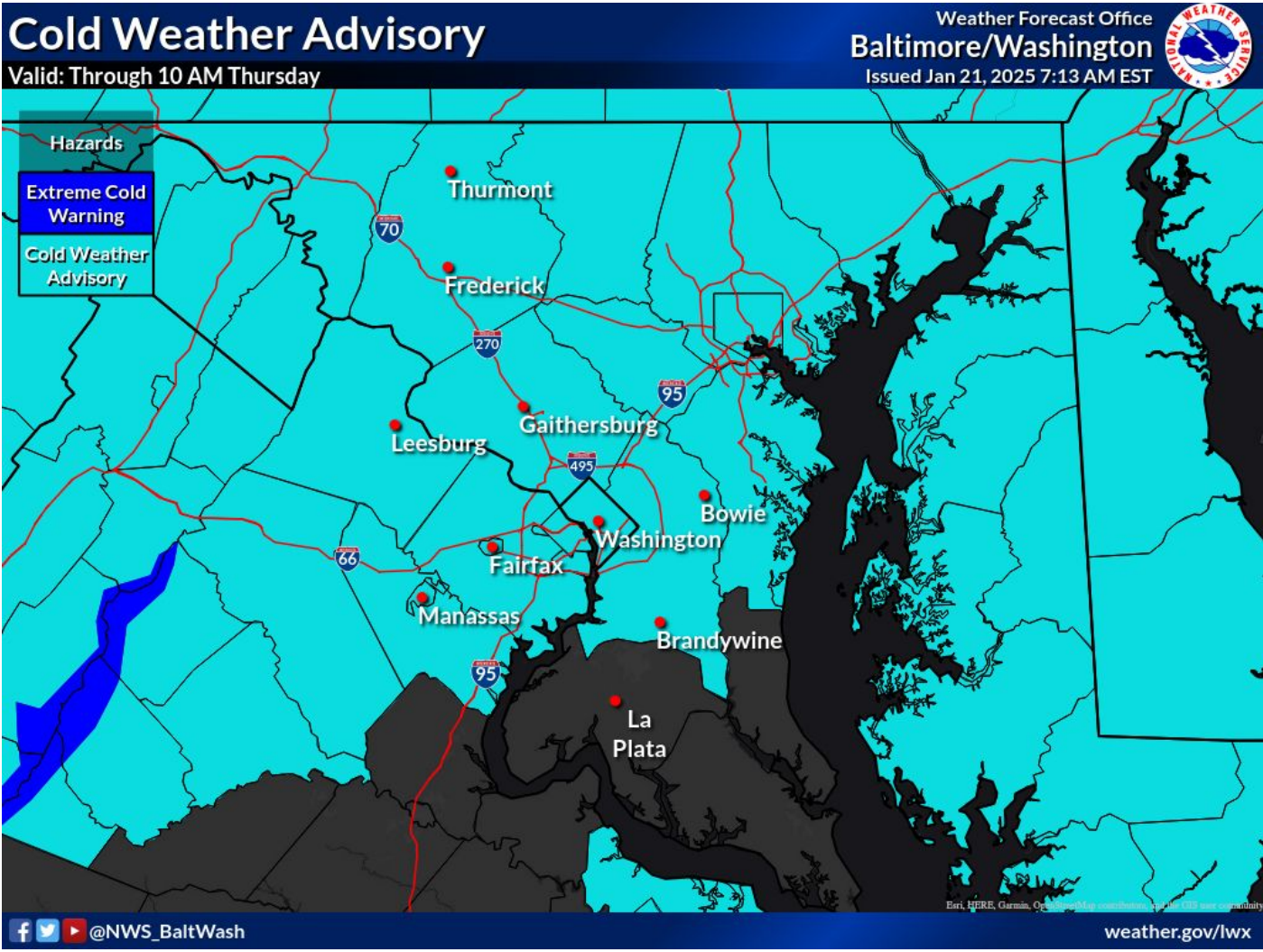
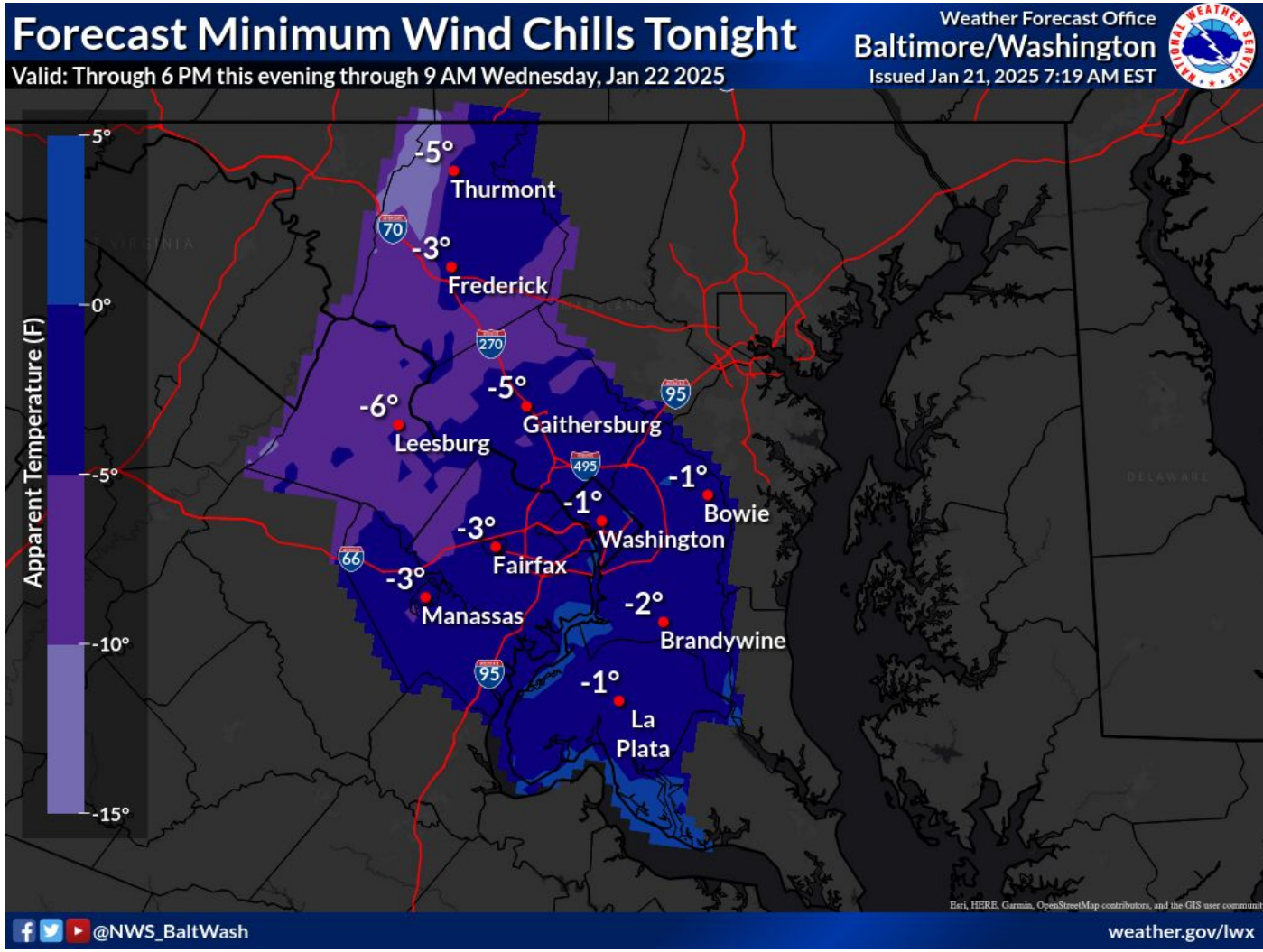
Extreme



Very Cold Wind Chills Expected Tonight

January 21, 2025
9:00 AM EST

Tonight into Wednesday Morning (January 21-22, 2025)



- **Cold Weather Advisory** in effect for DC Metro area through Thursday Morning.
- Very cold temperatures and blustery northwest winds will result in dangerously cold wind chills.
- Bitterly cold wind chills could result in hypothermia or frostbite. Wear appropriate clothing including multiple layers.
- Frozen residential pipes, broken water mains are likely results. Check on pets, elderly, and livestock.

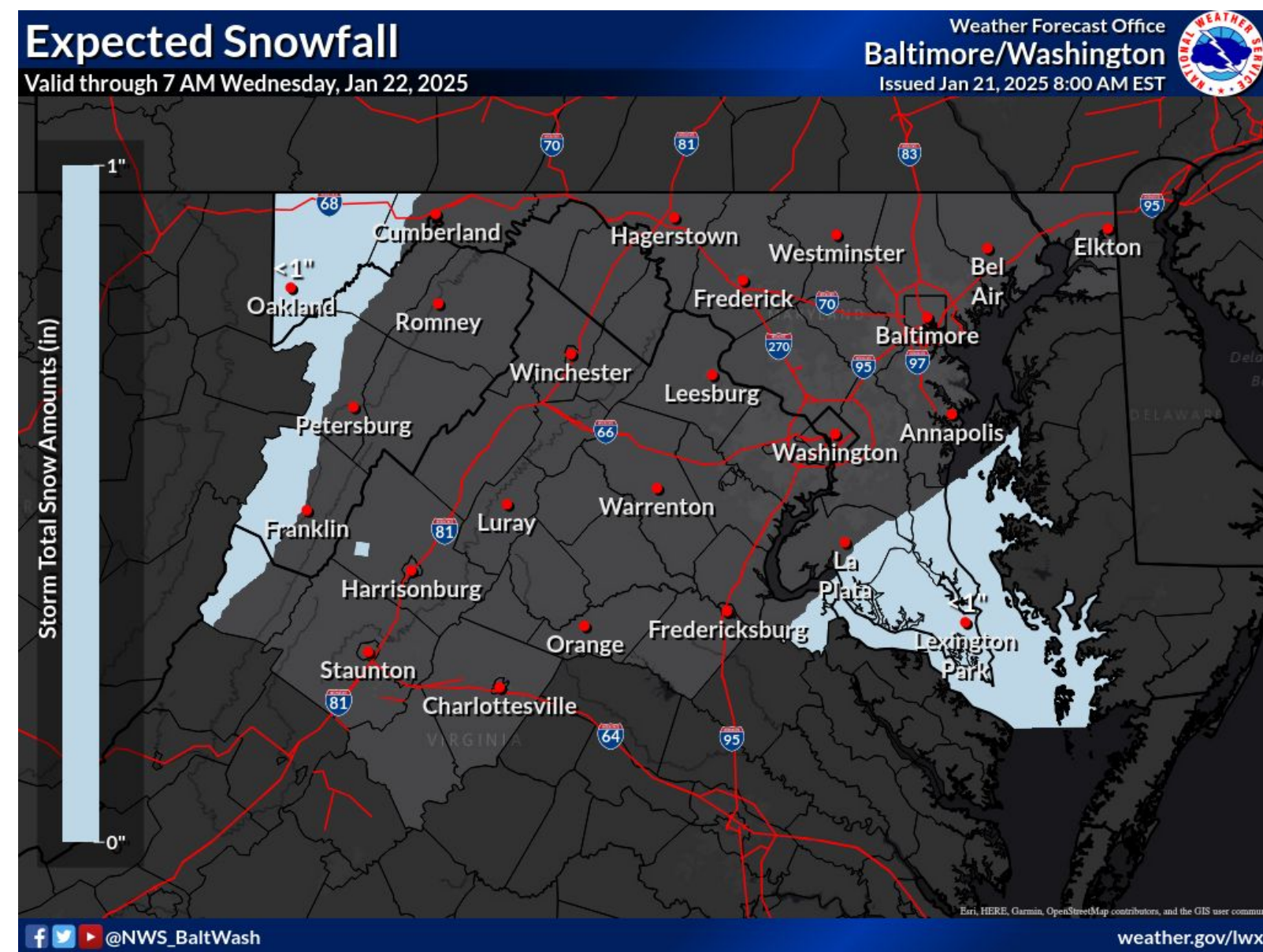




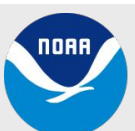
Flurries; Slight Chance For Snow Showers

January 21, 2025
9:00 AM EST

Late this afternoon and evening



- Expectation is for a few flurries in DC late this afternoon and evening.
 - Reasonable worst case scenario is for less than 1 inch of accumulation from snow showers 7pm-midnight.





U.S. Capitol Forecast Matrix (Day 2)

January 21, 2025
9:00 AM EST

Wednesday; Full table at weather.gov/lwx/inauguration

U.S. Capitol	Wed 1/22/2025								
	1am	4am	7am	10am	1pm	4pm	7pm	10pm	1am
Temperature	17°F	14°F	12°F	16°F	21°F	21°F	19°F	16°F	15°F
Sky Cover	30%	13%	6%	5%	36%	51%	45%	38%	54%
Wind Chill	6°F	1°F	-1°F	3°F	10°F	16°F	17°F	15°F	15°F
Wind Direction	NW	NW	NW	NNW	NW	WSW	SSE	SSE	S
Wind Speed	6mph	7mph	8mph	8mph	6mph	3mph	2mph	2mph	2mph
Wind Gust Speed	10mph	12mph	14mph	14mph	9mph	6mph	5mph	6mph	6mph
Weather Conditions	-	-	-	-	-	-	-	-	-
Probability of Precipitation	5%	3%	0%	0%	0%	0%	0%	0%	0%
Liquid Precipitation Amount	0in	0in	0in	0in	0in	0in	0in	0in	0in
Ice Accumulation	0in	0in	0in	0in	0in	0in	0in	0in	0in
Snow Accumulation	0in	0in	0in	0in	0in	0in	0in	0in	0in
Ceiling Height	-	-	-	-	-	-	-	-	-
Visibility	10.00mi	10.00mi	10.00mi	10.00mi	10.00mi	10.00mi	10.00mi	10.00mi	10.00mi
Probability of Thunder	0	0	0	0	0	0	0	0	0
NWS Hazardous Weather Alerts	Cold Weather Advisory	Cold Weather Advisory	Cold Weather Advisory	Cold Weather Advisory	Cold Weather Advisory	Cold Weather Advisory	Cold Weather Advisory	Cold Weather Advisory	Cold Weather Advisory

None

Limited

Elevated

Significant

Extreme

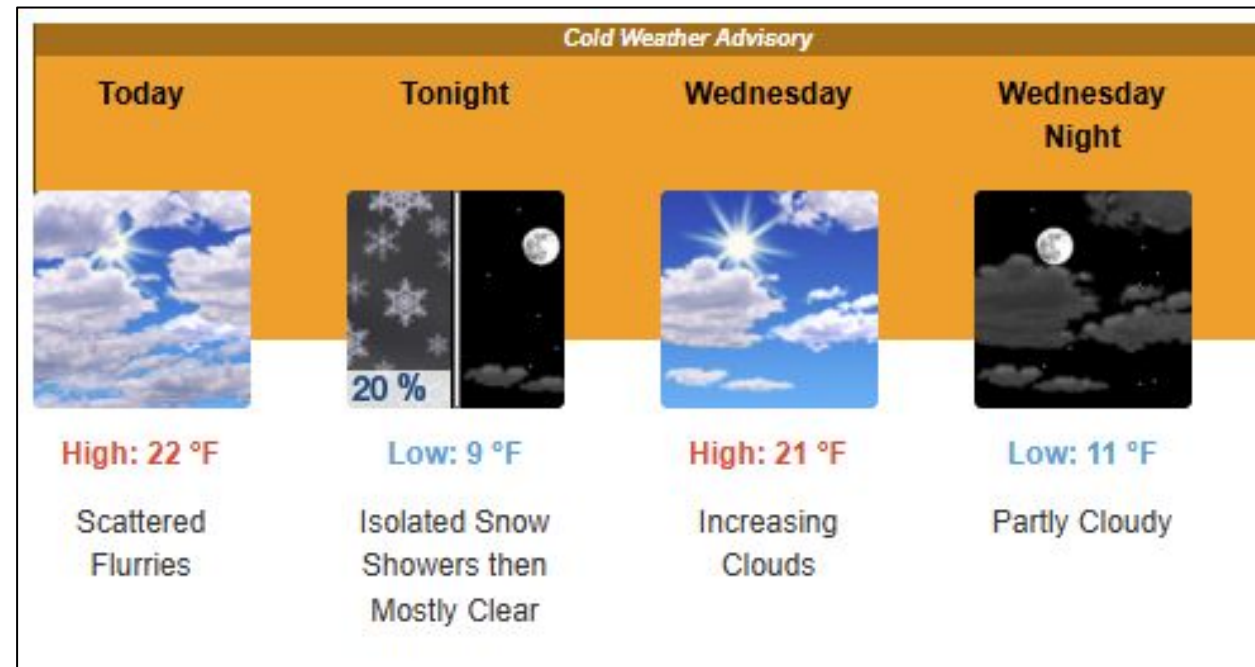




General Forecast for U.S. Capitol

January 21, 2025
9:00 AM EST

Through Wednesday, January 22, 2025



Today	Scattered flurries after 10am. Mostly cloudy, with a high near 22. North wind 5 to 9 mph becoming light northwest in the afternoon.
Tonight	Isolated snow showers before midnight. Cloudy during the early evening, then gradual clearing, with a low around 9. Calm wind becoming northwest 5 to 7 mph after midnight. Chance of precipitation is 20%.
Wednesday	Increasing clouds, with a high near 21. Wind chill values as low as -1. Northwest wind 3 to 8 mph.
Wednesday Night	Partly cloudy, with a low around 11. Calm wind.





Potomac River Forecast Next 24 Hours

January 21, 2025
9:00 AM EST

Full table always available at weather.gov/lwx/inauguration

Potomac River		Tue 1/21/2025												
		9am	11am	1pm	3pm	5pm	7pm	9pm	11pm	1am	3am	5am	7am	9am
Temperature		18°F	21°F	23°F	23°F	23°F	22°F	21°F	20°F	19°F	17°F	16°F	14°F	16°F
Wind Chill		8°F	10°F	15°F	17°F	16°F	15°F	15°F	11°F	8°F	5°F	2°F	0°F	2°F
Wind Direction		NNW	NNW	NW	NW	S	NNE	S	NW	NW	NW	NNW	NNW	NNW
Wind Speed		7kt	6kt	5kt	4kt	4kt	5kt	4kt	5kt	7kt	9kt	9kt	10kt	10kt
Wind Gust Speed		9kt	8kt	8kt	6kt	5kt	5kt	5kt	8kt	16kt	17kt	16kt	16kt	17kt
Sky Cover		92%	89%	84%	94%	94%	94%	92%	70%	30%	16%	10%	7%	5%
Probability of Precipitation		8%	8%	12%	13%	13%	22%	22%	18%	5%	5%	3%	0%	0%
Probability of Thunder		0	0	0	0	0	0	0	0	0	0	0	0	0
Liquid Precipitation Amount		0in	0in	0in	0in	0in	0in	0in	0in	0in	0in	0in	0in	0in
Ice Accumulation		0in	0in	0in	0in	0in	0in	0in	0in	0in	0in	0in	0in	0in
Snow Accumulation		0in	0in	0in	0in	0in	0in	0in	0in	0in	0in	0in	0in	0in
Visibility		10.00mi	10.00mi	10.00mi	10.00mi	10.00mi	2.00mi	2.00mi	10.00mi	10.00mi	10.00mi	10.00mi	10.00mi	10.00mi
Ceiling Height		12300ft	11500ft	9800ft	6200ft	6700ft	7100ft	6700ft	6600ft	-	-	-	-	-
Wave Height		1ft	1ft	1ft	1ft	1ft	1ft	1ft	1ft	1ft	1ft	1ft	1ft	1ft
NWS Hazardous Weather Alerts		-	-	-	-	-	-	-	-	Small Craft Advisory	Small Craft Advisory	Small Craft Advisory	Small Craft Advisory	Small Craft Advisory

Marine Hazards

- Winds have generally decreased over the Potomac this morning, though occasional gusts to 18-20 knots are possible through 10-11 AM.
- Ice largely covers the Potomac River in and around Washington D.C.

Looking Ahead

- Small Craft Advisory (20 knots)* across all the waters by late tonight into Wednesday.

Water Temperatures in any ice free waters: 33°F

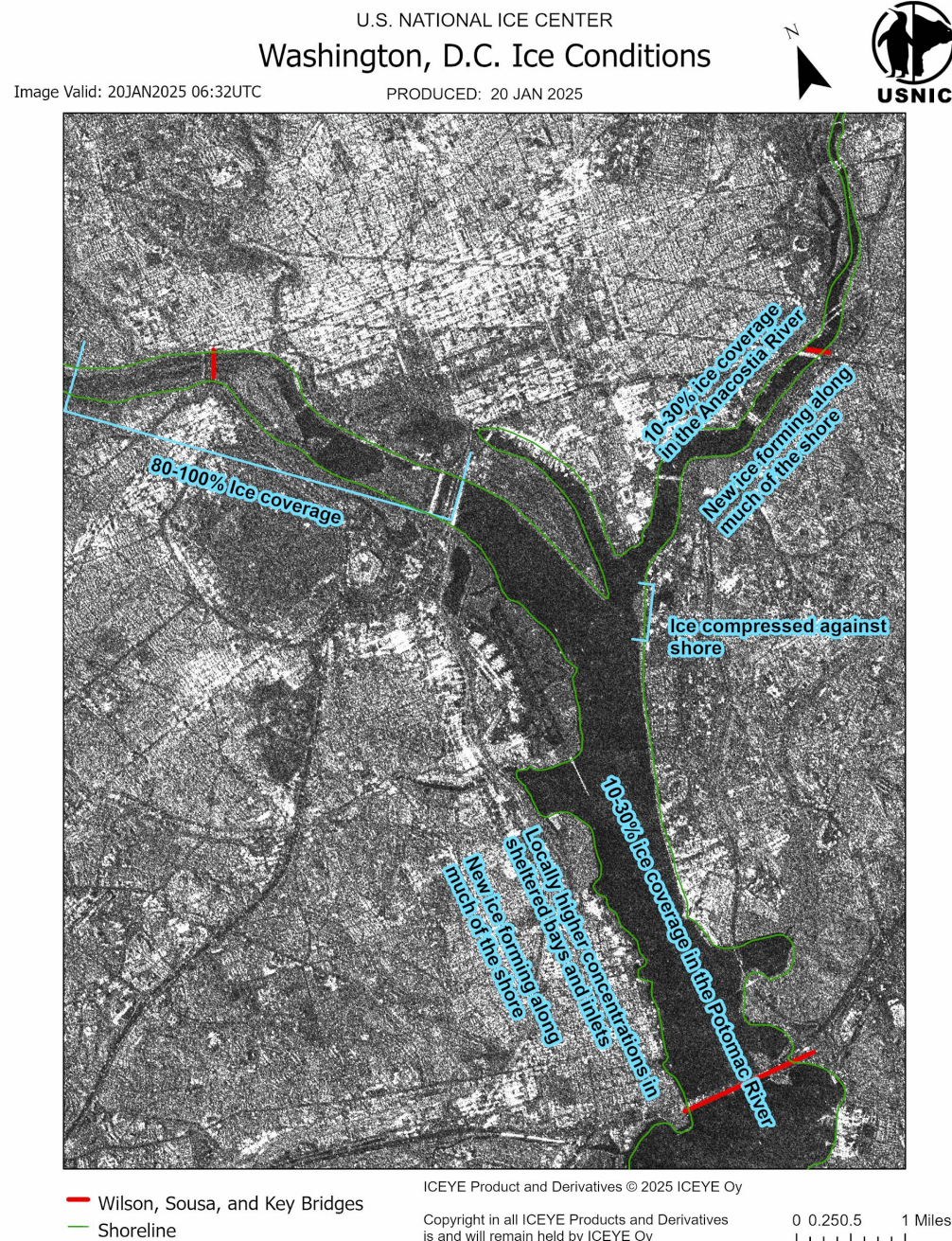




Ice Coverage

January 21, 2025
9:00 AM EST

Map Valid Monday, January 20, 2025 on the Potomac and Anacostia Rivers



- Many of the sheltered bays and inlets have significant ice coverage.
 - Cold temperatures overnight allowed for new ice formation along parts of the shore.
- Given continued well below freezing temperatures through Wednesday, it is expected that all sheltered bays & inlets will have 80-100% ice coverage and for new ice coverage to significantly expand.

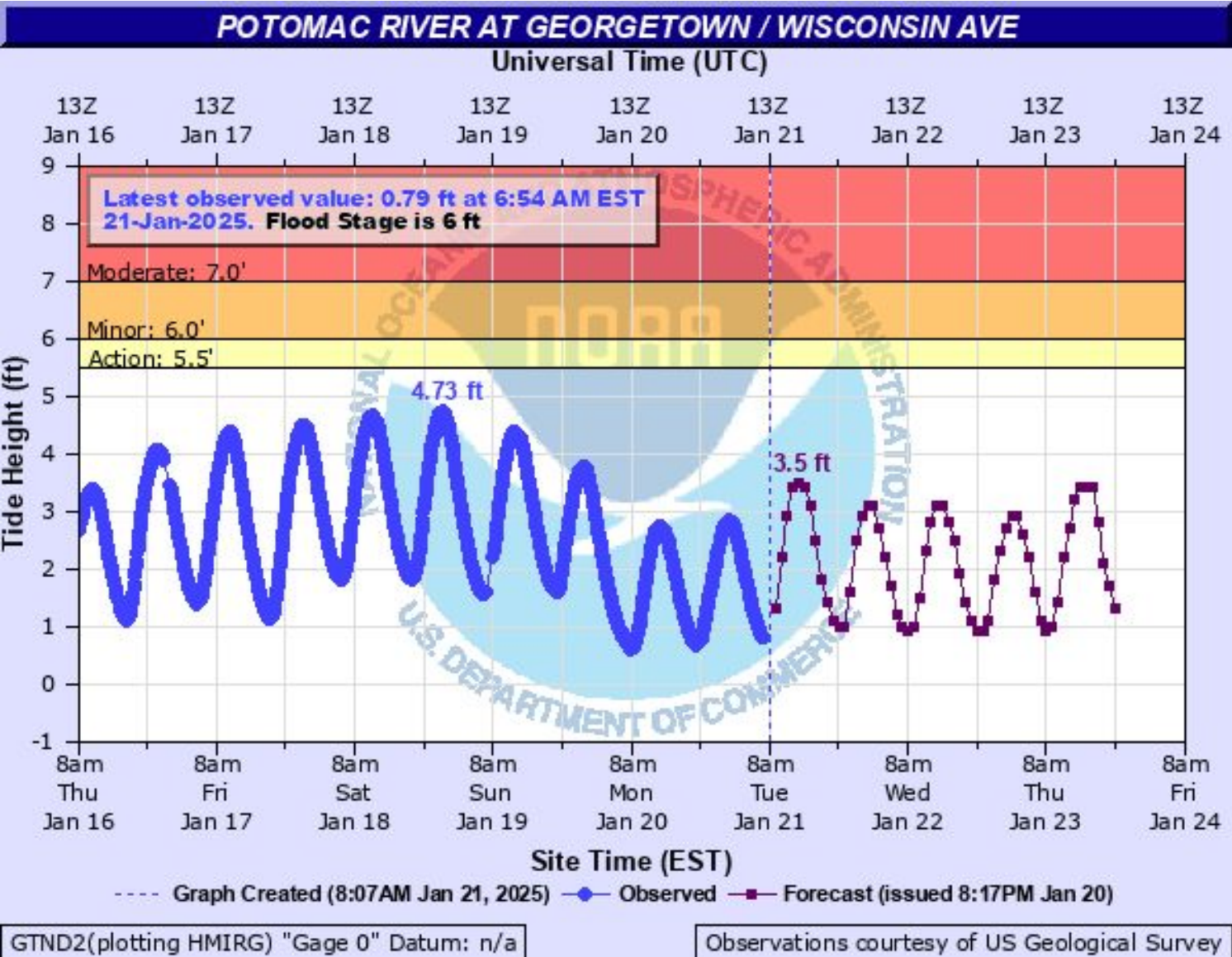
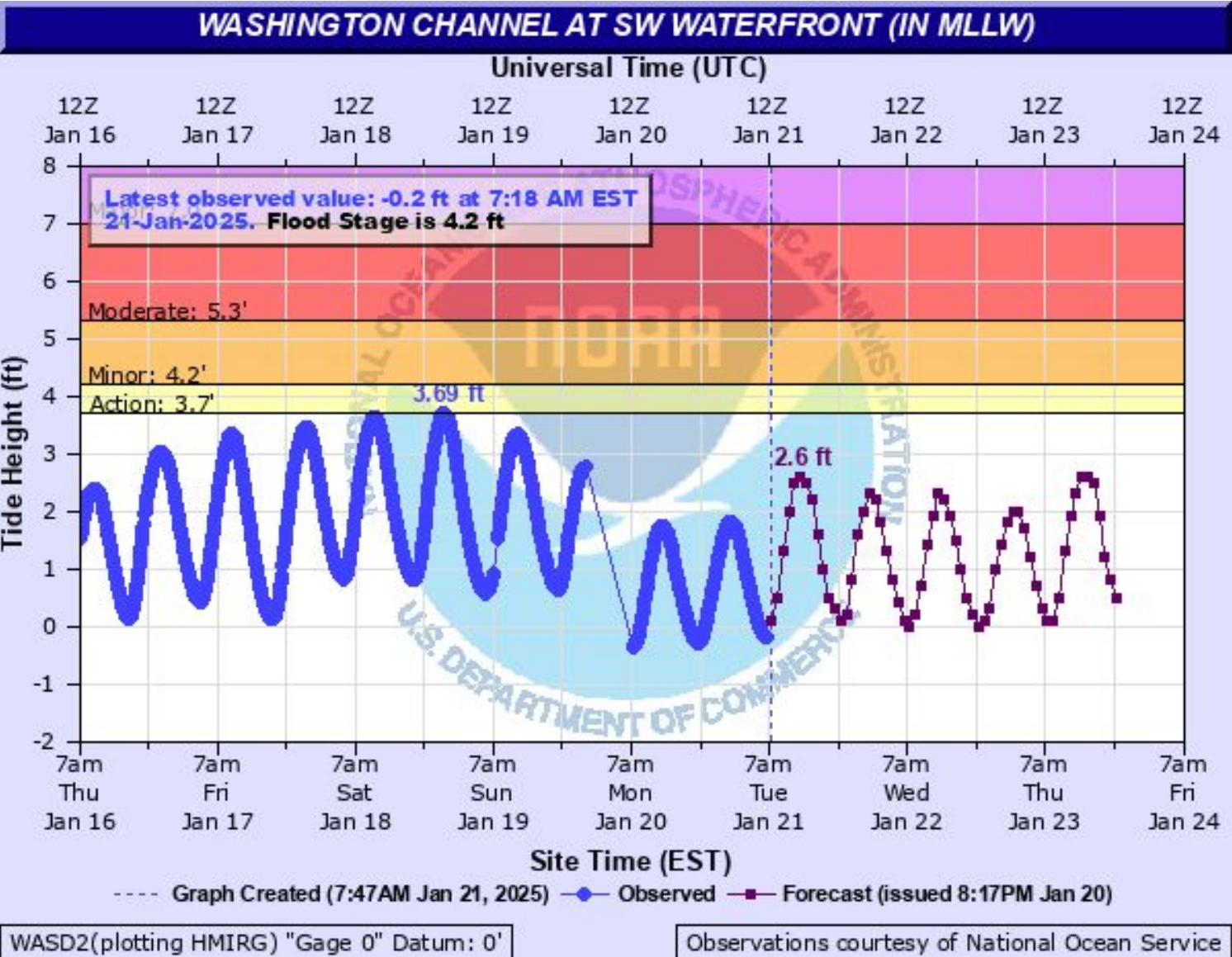




Tidal Forecast

January 21, 2025
9:00 AM EST

For Washington Channel at SW Waterfront and Potomac River at Georgetown



- No tidal issues expected through midweek.





DC Airports Terminal Aerodrome Forecasts

January 21, 2025
9:00 AM EST

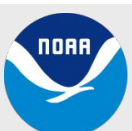
Valid from 12Z Tue 21 Jan 2025 to 18Z Wed 22 Jan 2025

Ronald Reagan Washington National Airport (KDCA)

KDCA 211137Z 2112/2218 34010KT P6SM BKN100
FM212100 28005KT P6SM BKN035 OVC050
FM220500 32007KT P6SM SCT050
FM220900 33009G18KT P6SM FEW250
FM221500 33007KT P6SM FEW250

Washington Dulles International Airport (KIAD)

KIAD 211137Z 2112/2218 36007KT P6SM OVC140
FM212000 29004KT P6SM BKN040 OVC060
FM220500 32006KT P6SM SCT050
FM221100 33008KT P6SM FEW120
FM221300 33007KT P6SM SKC





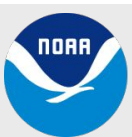
Astronomical Data: U.S. Capitol

January 21, 2025
9:00 AM EST

21 January 2025, all times local time/EST

Date	Sunrise/Sunset	Civil Twilight	Nautical Twilight	Astronomical Twilight	Moonrise/Moonset
Tue 21 Jan	0722/1717	0653/1746	0621/1818	0549/1850	0011/1104

Data courtesy Astronomical Applications Department of the U.S. Naval Observatory

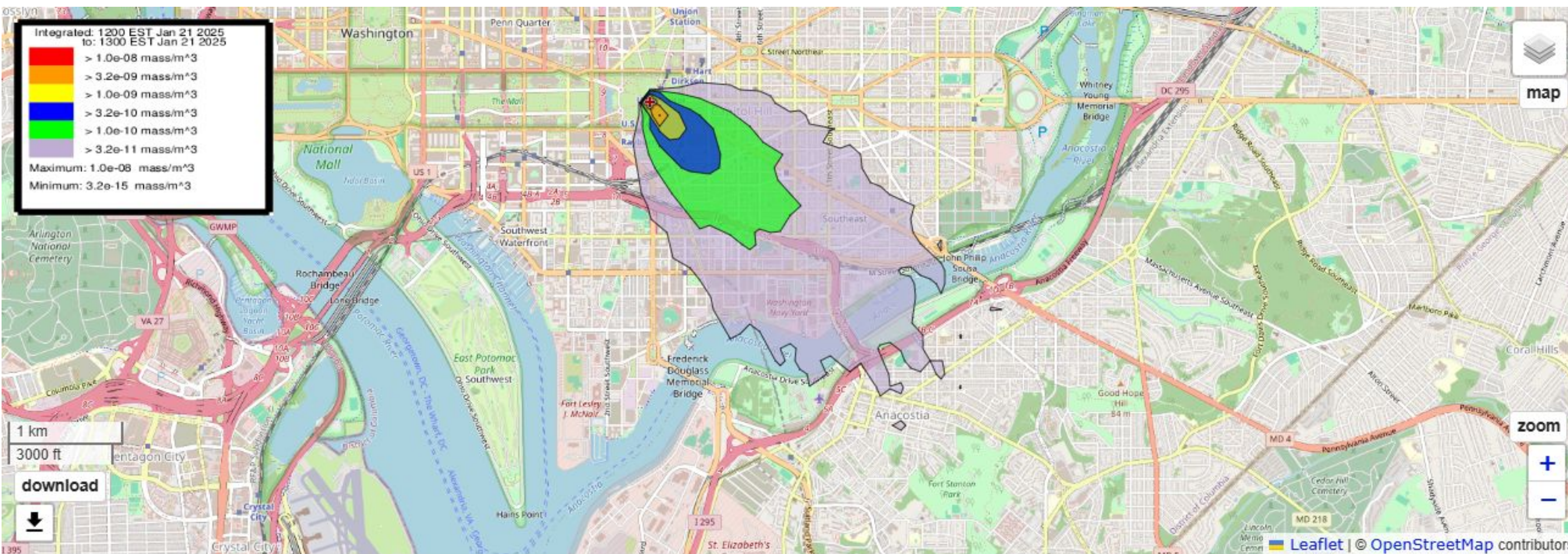




U.S. Capitol Plume Dispersion (HYSPLIT Model)

January 21, 2025
9:00 AM EST

Valid at Noon EST Today - Tuesday Jan 21, 2025 (can be run anytime by request)





Space Weather Summary/Forecast

January 21, 2025
9:00 AM EST

Additional information at [NWS Space Weather Prediction Center](#)

Key Messages

- No significant space weather activity is expected at this time.
- Moderate solar flare activity over past 24 hours. Solar flares still likely levels for occasional periods of minor HF radio interference over sunlit side of Earth for next 24-48 hrs.

Space Weather Related Concerns	Current 21 Jan	24hr Forecast 22 Jan	48hr Forecast 23 Jan
Communications Degradation	HF	HF	HF
Satellite Functionality			
GPS Errors			
Power Grid Disruption			
Low Risk <10%	Slight Risk <20%	Moderate Risk >50%	High Risk >70%

Jan 21st	HF Radio Blackouts (R3+ Risk)	Geomagnetic Storm (G3+ Risk)	Solar Radiation Storm (S1+ Risk)
Probability	20%	1%	10%



Space Weather Activity	Past 24 Hours
Communications Degradation	HF
Satellite Functionality	
GPS Errors	
Power Grid Disruption	





Summary

January 21, 2025
9:00 AM EST

Today into Tonight

- **Cold Weather Advisory** in effect for Washington D.C. Metro through tonight.
 - Bitterly cold wind chills expected with wind chills in the teens during the day, dropping to near zero tonight.
- Slight chance (20%) for accumulating snow from snow showers this evening.
 - Expectation is just for a few flurries in DC, with a light accumulation in southern Maryland.
 - Reasonable worst case scenario is for light snow 7pm-midnight, less than 1".

Wednesday

- **Cold Weather Advisory** continues through Wednesday.



Next Briefing

→ No additional scheduled briefings at this time



NWS Balt/Wash Inauguration Webpage

→ weather.gov/lwx/inauguration



Contact Information

Email

→ nws-sterling-wxsupport@noaa.gov

Social Media

→ facebook.com/NWSBaltWash
→ [@NWS_BaltWash](https://twitter.com/NWS_BaltWash)

