



Eclipse Weather Briefing

**National Weather Service
Little Rock, Arkansas**

**April 4, 2024
9:45 AM CDT**



- The forecast remains tricky for April 8th, especially considering this is the time of year when weather conditions are the most changeable.
- At present, the large scale pattern features a broad south to southwest flow aloft over the region. This will provide moisture, clouds, and chances of showers/thunderstorms from southern Arkansas to the Gulf Coast. Meanwhile, a cold front will try to bring drier air/partial clearing into northern sections of the state. Just after the eclipse, there is a risk of severe weather/heavy rain in parts of the region.
- In the path of totality, there is currently a medium to high chance of viewing the eclipse the farther north you go, including portions of northern into central Arkansas. There is a medium to low chance farther south. Perfect viewing conditions remain unlikely anywhere in the state.
- Important to Remember: Despite vast improvements of weather models in recent years, any information over more than a few days of a specific time is subject to change. Forecast details will be fine tuned as additional data is received up to the time of the eclipse.

Eclipse Weather: Arkansas Perspective

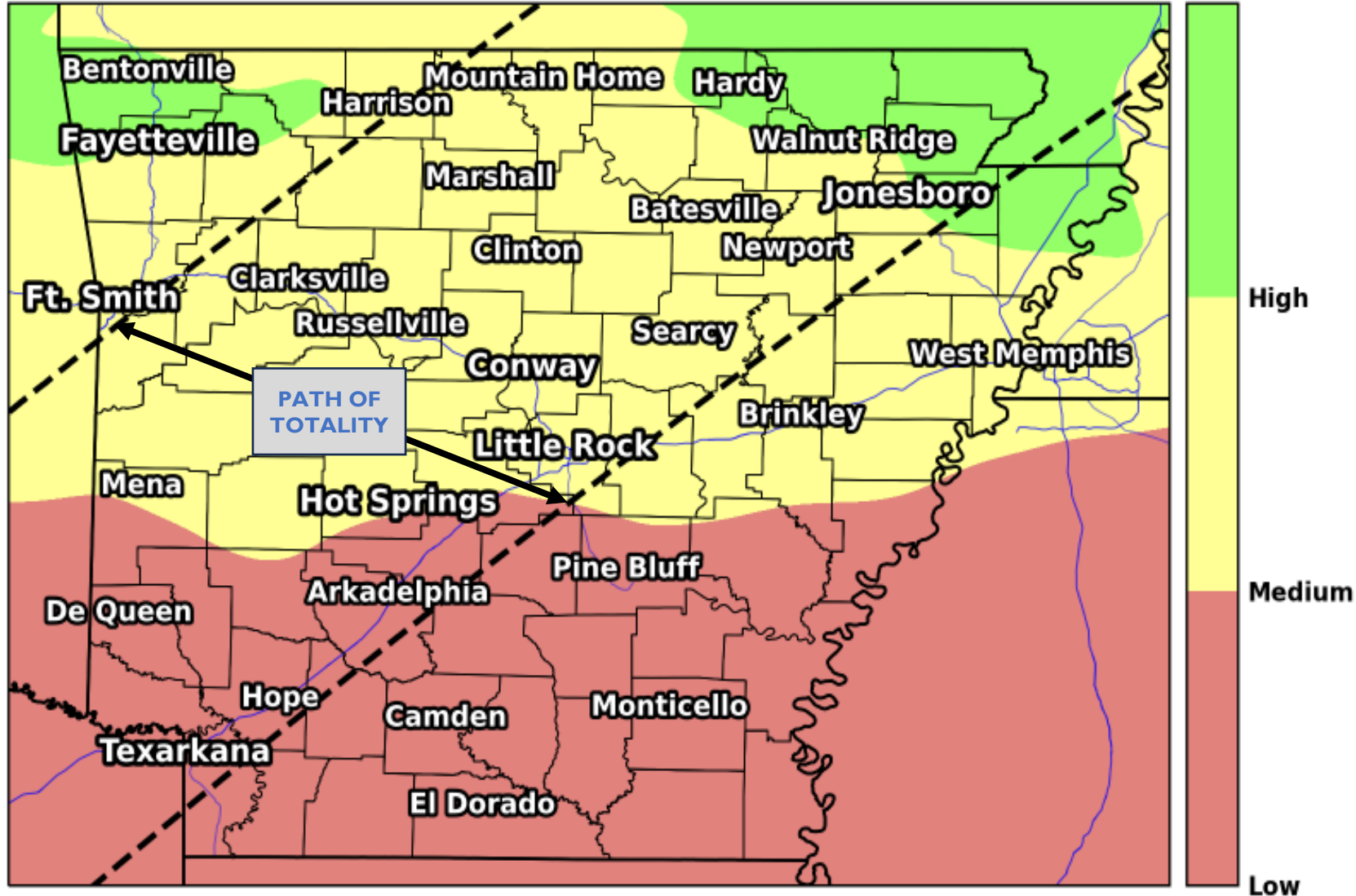


The chance of 50% sky coverage or less near the time of totality

Chance of Favorable Eclipse Viewing Conditions

From NBM Initialized on 04/04/2024 12Z

Hour: 102 Valid: 04/08/2024 18Z



The latest data suggests that much of northern into central Arkansas (in the path of totality) will have a medium to high chance of favorable eclipse viewing conditions, with a medium to low chance farther south.

The region of most favorable viewing conditions of the eclipse is indicated by the green shading.

Perfect viewing conditions remain unlikely anywhere in the state.

Eclipse Weather: Regional Perspective

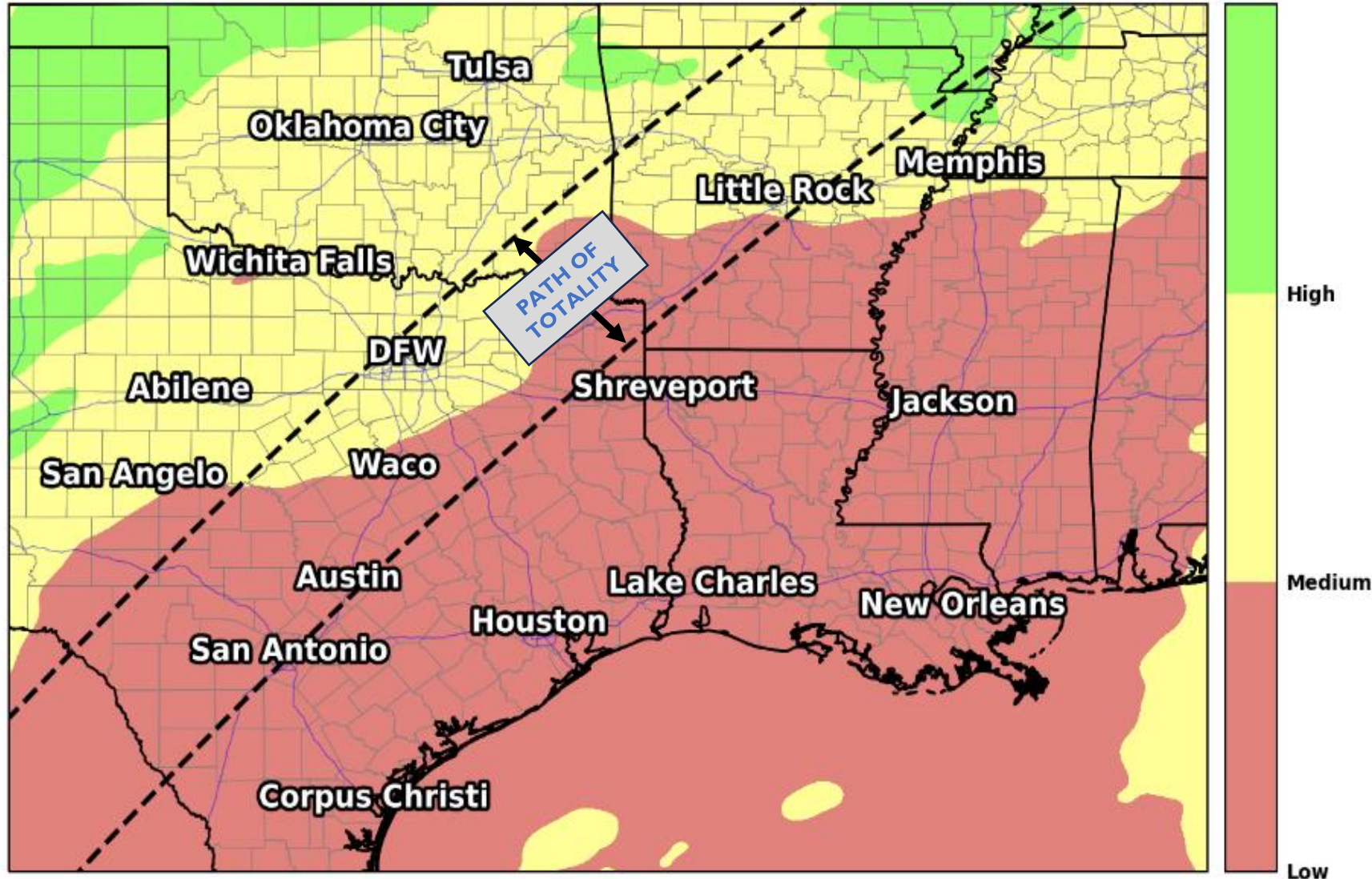


The chance of 50% sky coverage or less near the time of totality

Chance of Favorable Eclipse Viewing Conditions

From NBM Initialized on 04/04/2024 12Z

Hour: 102 Valid: 04/08/2024 18Z



Regionally (in the path of totality), the latest data suggests that eclipse viewing conditions are most favorable the farther north you go, including parts of northern Arkansas into Missouri.

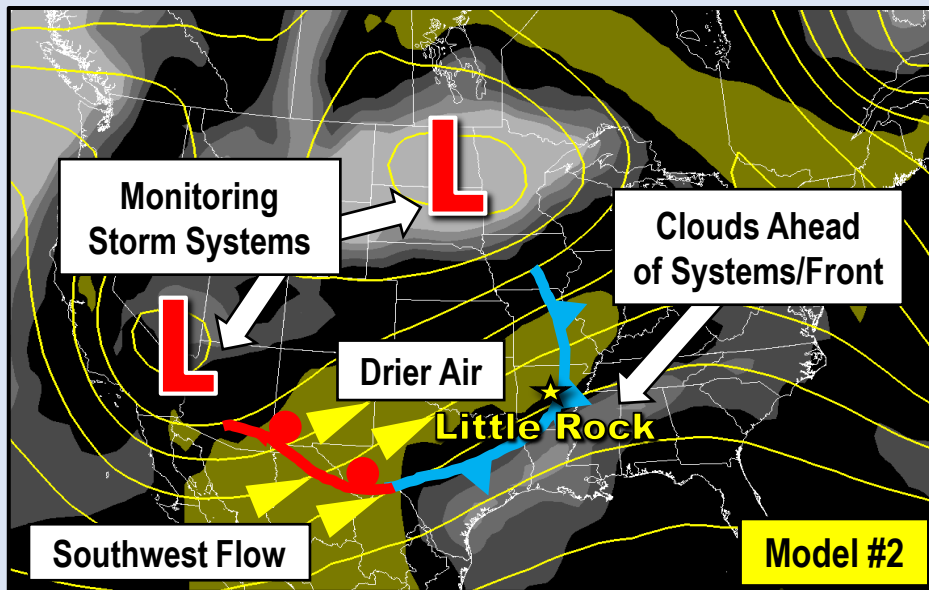
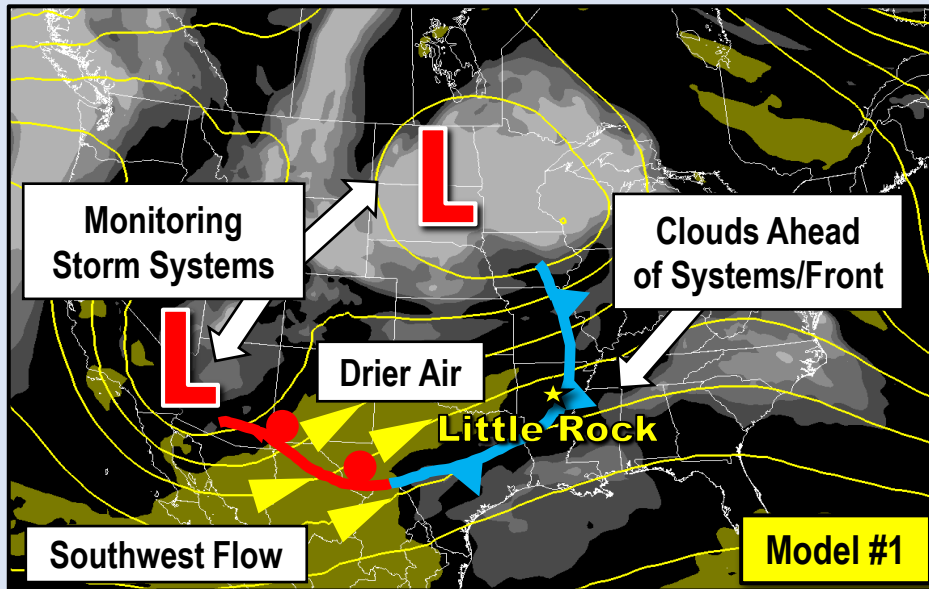
The least favorable viewing conditions are farther south from Texas into southwest Arkansas.

Eclipse Weather: The Forecast Pattern

Weather Forecast Office
Little Rock, AR



April 8, 2024



Models are showing large storm systems (“L”) over the northern Plains and southwest United States on the day of the eclipse. Ahead of the systems, a south to southwest flow will provide moisture/clouds and the possibility of showers/thunderstorms from southern Arkansas to the Gulf Coast. Meanwhile, drier air will try to build into northern sections of the state behind a cold front. Across the state, it appears eclipse viewing is best the farther north you go.

Please note this is several days away, and a lot could happen between now and the day in question (i.e. system placement, timing, moisture/clouds).

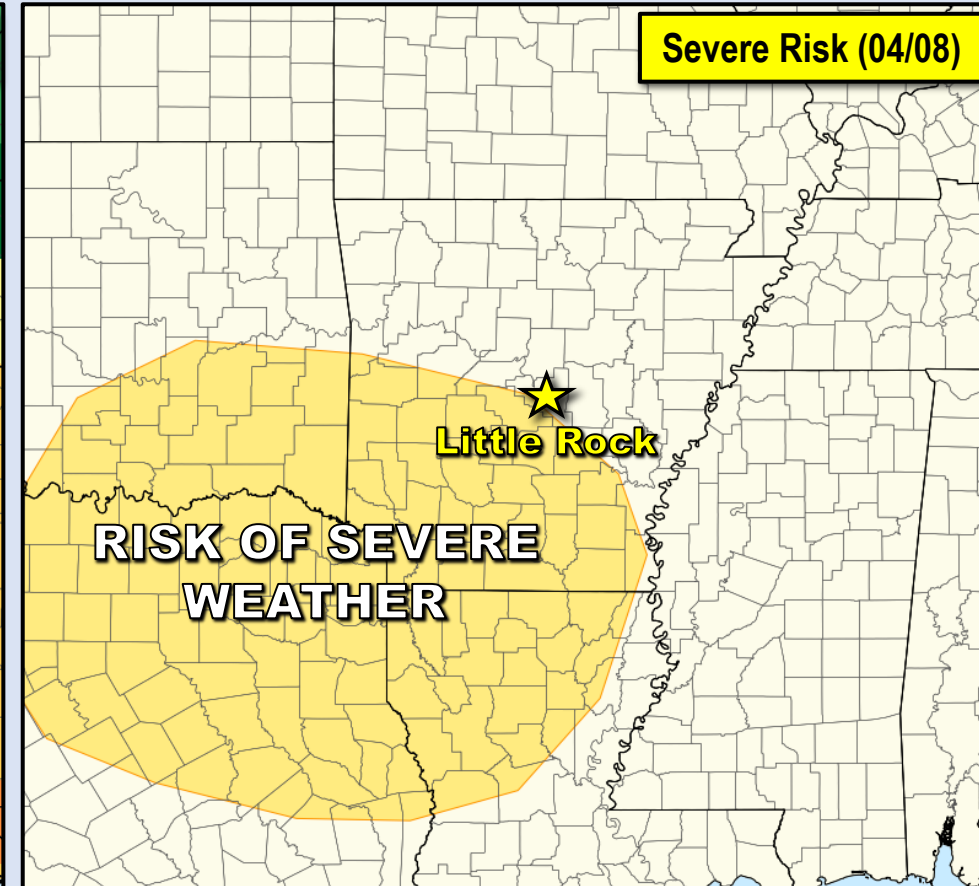
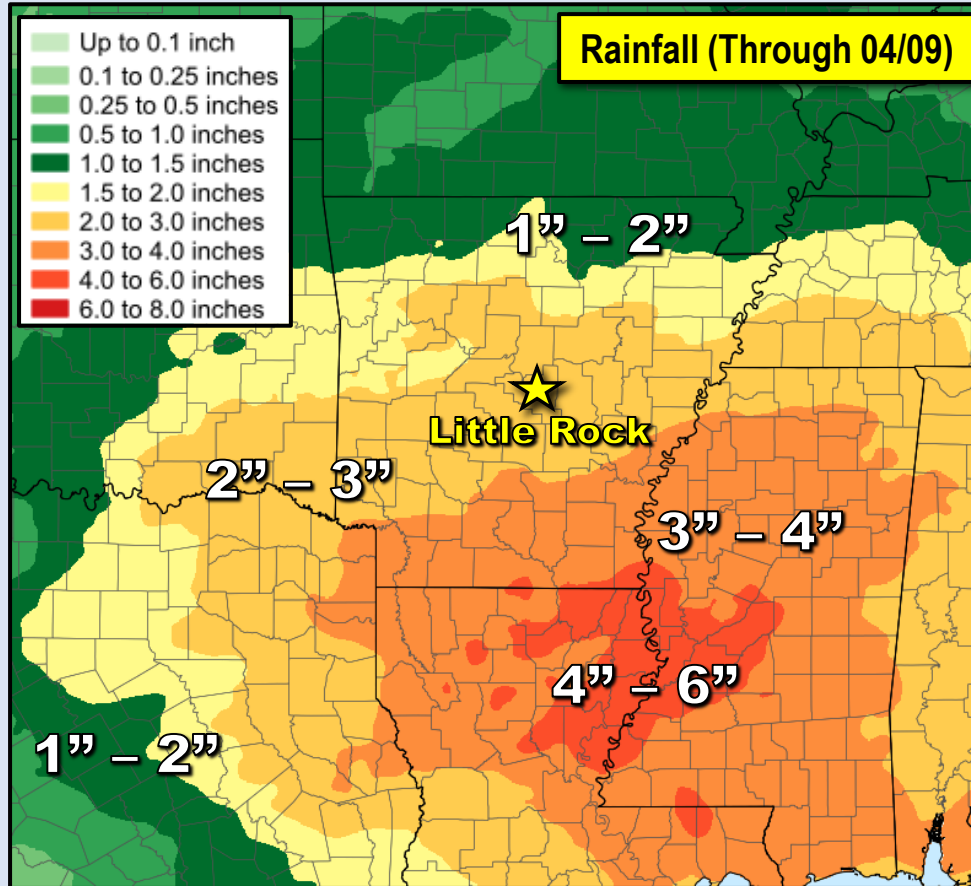
The main takeaway is there is still some uncertainty in determining cloud cover across the path of totality. Stay tuned.

Eclipse Weather: Severe Storms/Heavy Rain

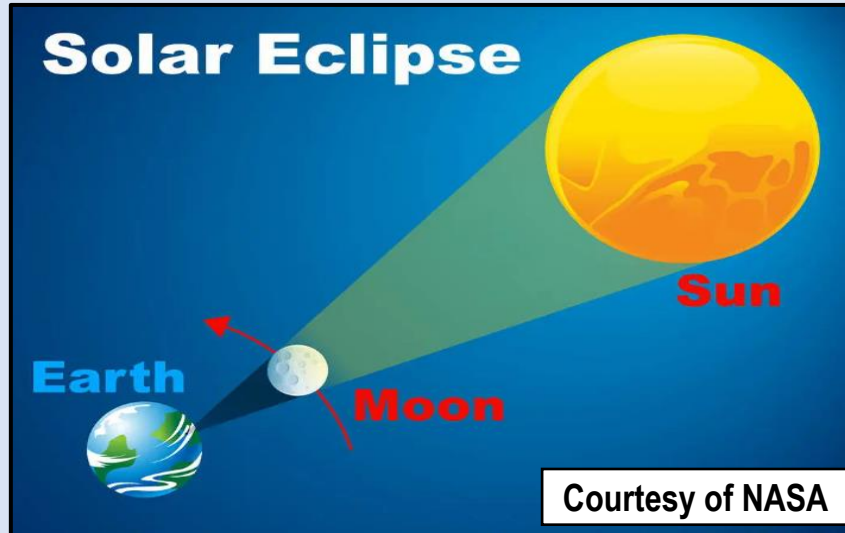
Weather Forecast Office
Little Rock, AR



April 8, 2024



A potent storm system will approach from the southwest United States. Ahead of the system, showers and thunderstorms will become widespread Monday night into Tuesday (after the eclipse). More than two inches of rain could occur in central and southern Arkansas, with a potential for severe weather in southwest sections of the state.



On Monday, April 8, 2024, a rare total solar eclipse will be observed across Mexico, the United States, and Canada. The path of totality will be carved out across northern, western, and central Arkansas from southwest to northeast during the early afternoon hours.

A total solar eclipse occurs when the Moon orbits between the Sun and Earth, casting a shadow on the earth's surface. Total solar eclipses occur somewhere on Earth every 18 months on average. However, the Moon's diameter is roughly one-quarter of Earth's (about the width of Australia), so it casts a small shadow. Thus, any given location on Earth is estimated to see a total solar eclipse only every 360 to 410 years on average. Saying this event is "rare" may be taking it too lightly.

For some, it is a once in a lifetime event. The next total solar eclipse viewable in the contiguous United States will be more than 20 years later on August 22 and 23 of 2044. The next total solar eclipse viewable in Arkansas will be on August 12, 2045.



Eclipse Safety: Total Solar Eclipse Timeline

Weather Forecast Office
Little Rock, AR



The progression of the Total Solar Eclipse and when a solar filter/eclipse glasses are a MUST

Solar Eclipse Safety



Partial Eclipse use filter Total Eclipse filter not needed Partial Eclipse use filter

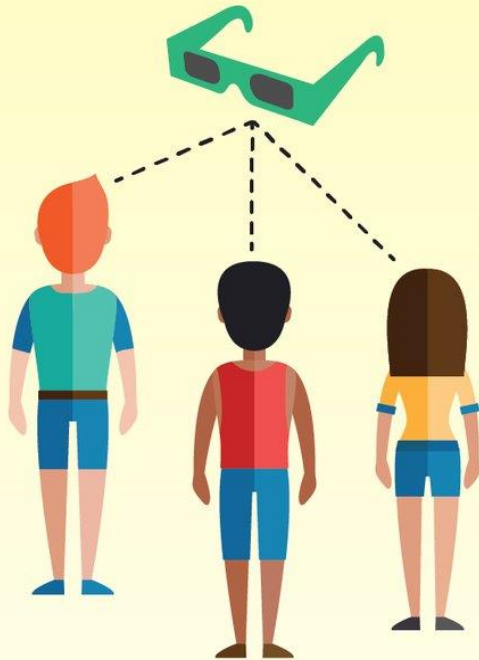
The sun is dangerously bright and must be viewed through solar filters.



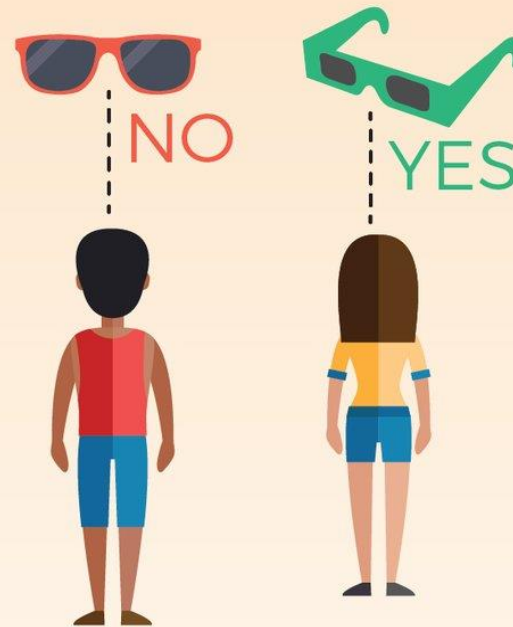
It's NEVER okay to look at the Sun during the Partial Eclipse without eye protection

Protecting Your Eyes

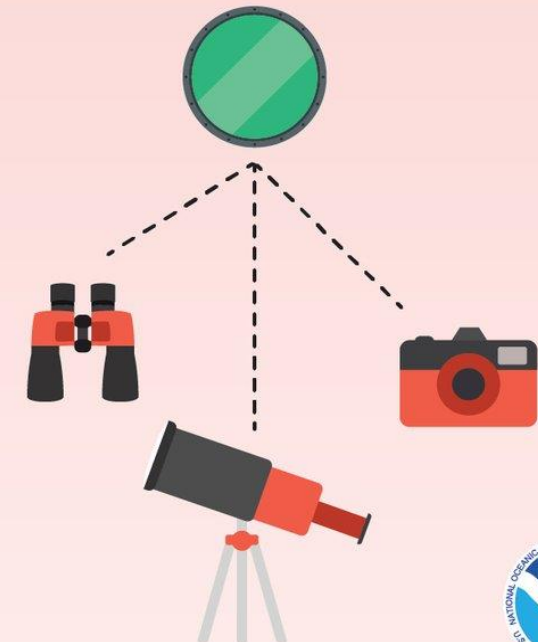
The only safe way to look directly at the sun is through special-purpose solar filters, such as **eclipse glasses**.



Ordinary **sunglasses** **AREN'T ENOUGH** to protect your eyes, DO NOT wear sunglasses to view the eclipse.



DO NOT look at the sun through a camera, telescope or binoculars unless these **devices have a solar filter** -- your eclipse glasses ARE NOT sufficient.





For the latest information



Web: <http://weather.gov/LZK>



Phone: (501) 834-0308



E-mail: sr-lzk.forecasters@noaa.gov



Facebook: NWSLittleRock



Twitter: @NWSLittleRock



YouTube: NWSLittleRock