

## Loraine, Texas Tornado Damage Survey:

On Tuesday, May 26, 2015 a tornado damage survey was conducted by NWS Midland meteorologists. A tornado was confirmed in Loraine, Texas in Mitchell County (Figure 1) at approximately 9:00 AM on Monday, May 25, 2015.

The damage survey team toured the tornado path with Jason Gruden, EMS Director at Mitchell County Hospital. The damage survey team also met with Loraine, Texas Fire Chief Rick Bailey who witnessed the tornado and whose home was damaged.

The tornado touched down at approximately 9:00 pm CDT and continued generally northeast for a distance of 0.16 miles before lifting (Figures 2 and 3). The tornado was on the ground for less than one minute. There was extensive damage to a barn where several walls collapsed and a pole with a cement base was pulled out of the ground (Figures 4 and 5). There was also damage to Loraine, Texas Fire Chief Rick Bailey's house where debris from the barn became embedded in the side of the house (Figure 6). At its widest the tornado was estimated to have a width of approximately 50 yards. Based on the damage, the tornado will be rated as an **EF-1** (estimated wind speed of 100 mph).

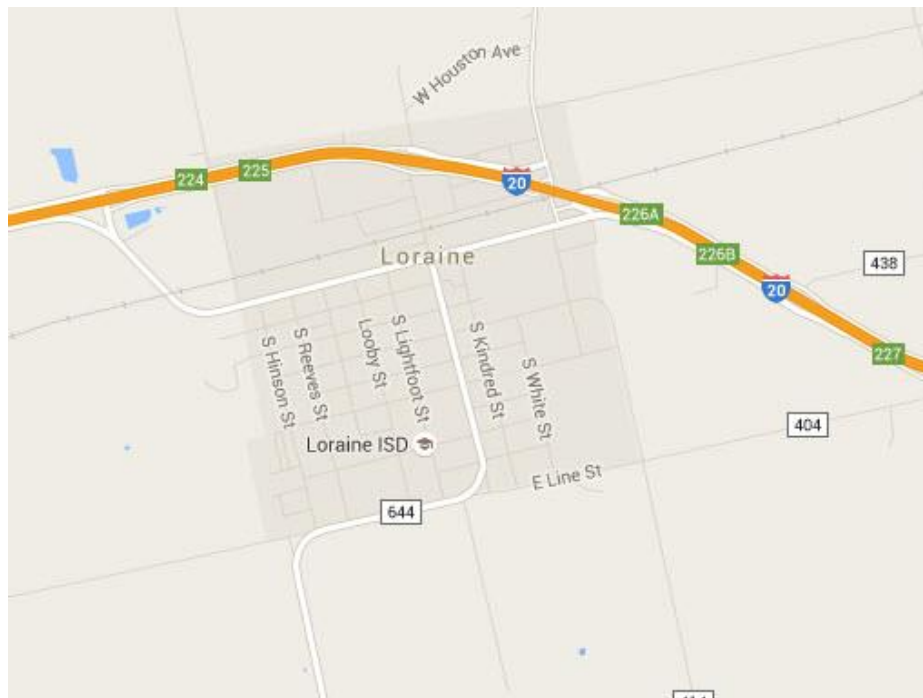


Figure 1: Map of Loraine, Texas.



Figure 2: Path of the tornado – southwest to northeast.

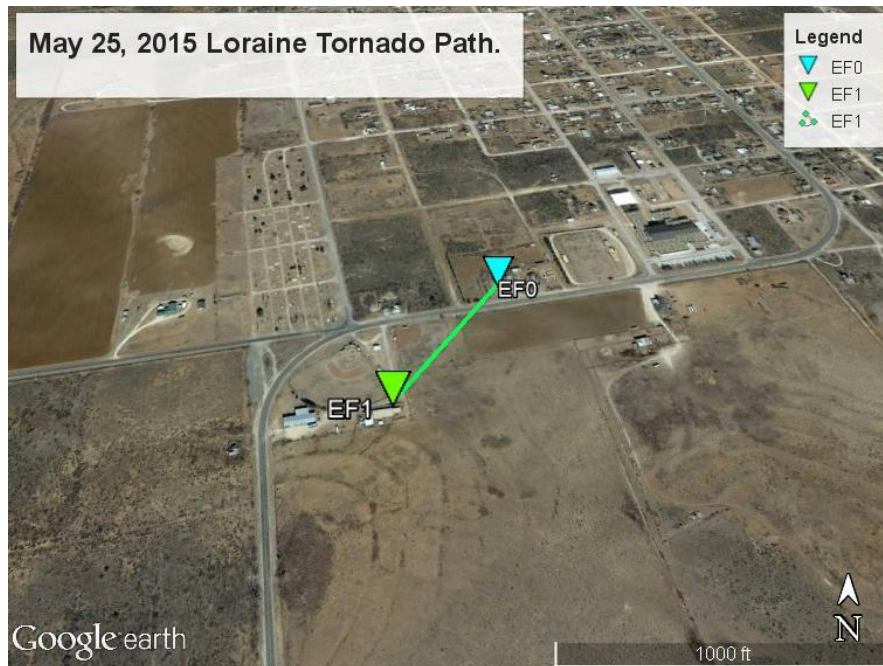


Figure 3: Google Earth view of tornado path.



**Figure 4: Damage to barn.**



**Figure 5: Pole with cement base pulled out of the ground.**



**Figure 6: Debris from barn embedded in the side of the house.**