

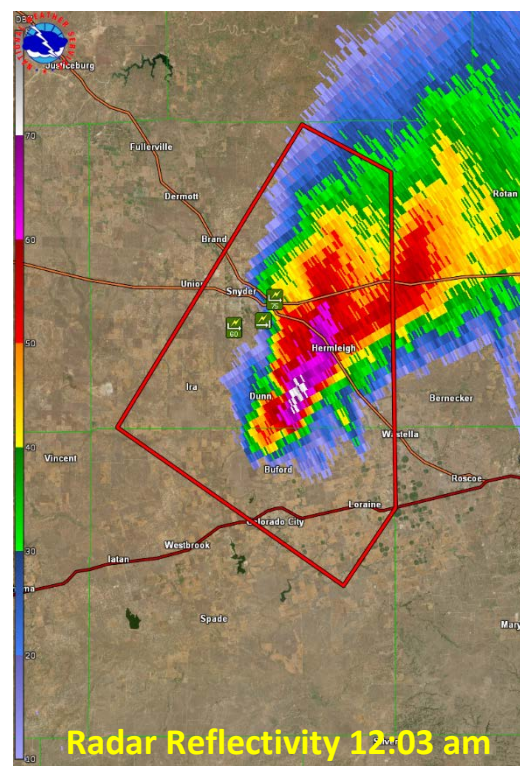
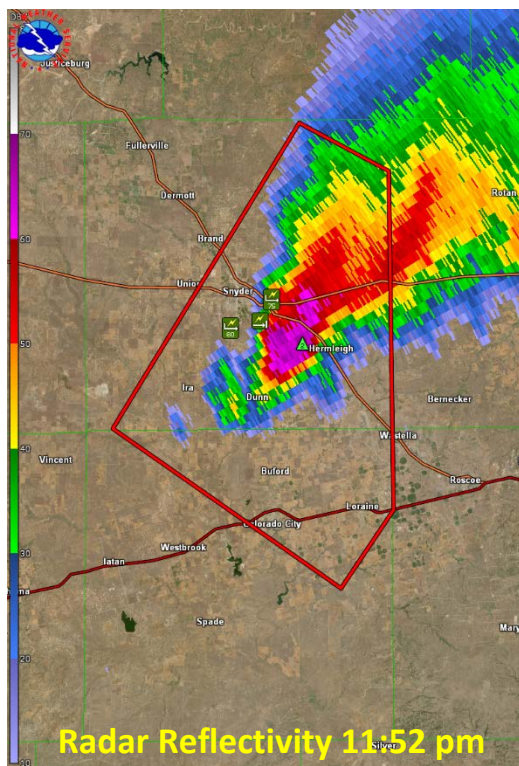
Severe Thunderstorms Bring Damaging Winds and Flash Flooding to Scurry and Mitchell Counties

Widespread wind damage and flash flooding occurred from a severe thunderstorm as it moved south-southeast through eastern Scurry and Mitchell Counties late evening on June 7, 2018. The National Weather Service storm survey team noted extensive wind damage to multiple wooden power poles and steel lattice transmission towers. Oncor confirmed that there were just over 200 assorted wood transmission poles and 86 steel lattice transmission towers damaged, or 22.5 miles of transmission line downed, during this storm. Other damage found included the total destruction of a couple of barns as well as a manufactured home that resulted in 1 injury. This damage would suggest straight-line winds ranging from 85-120 mph.

Special thanks to Perry Westmoreland and Nathan Hines, Scurry County, for assisting with this damage survey.

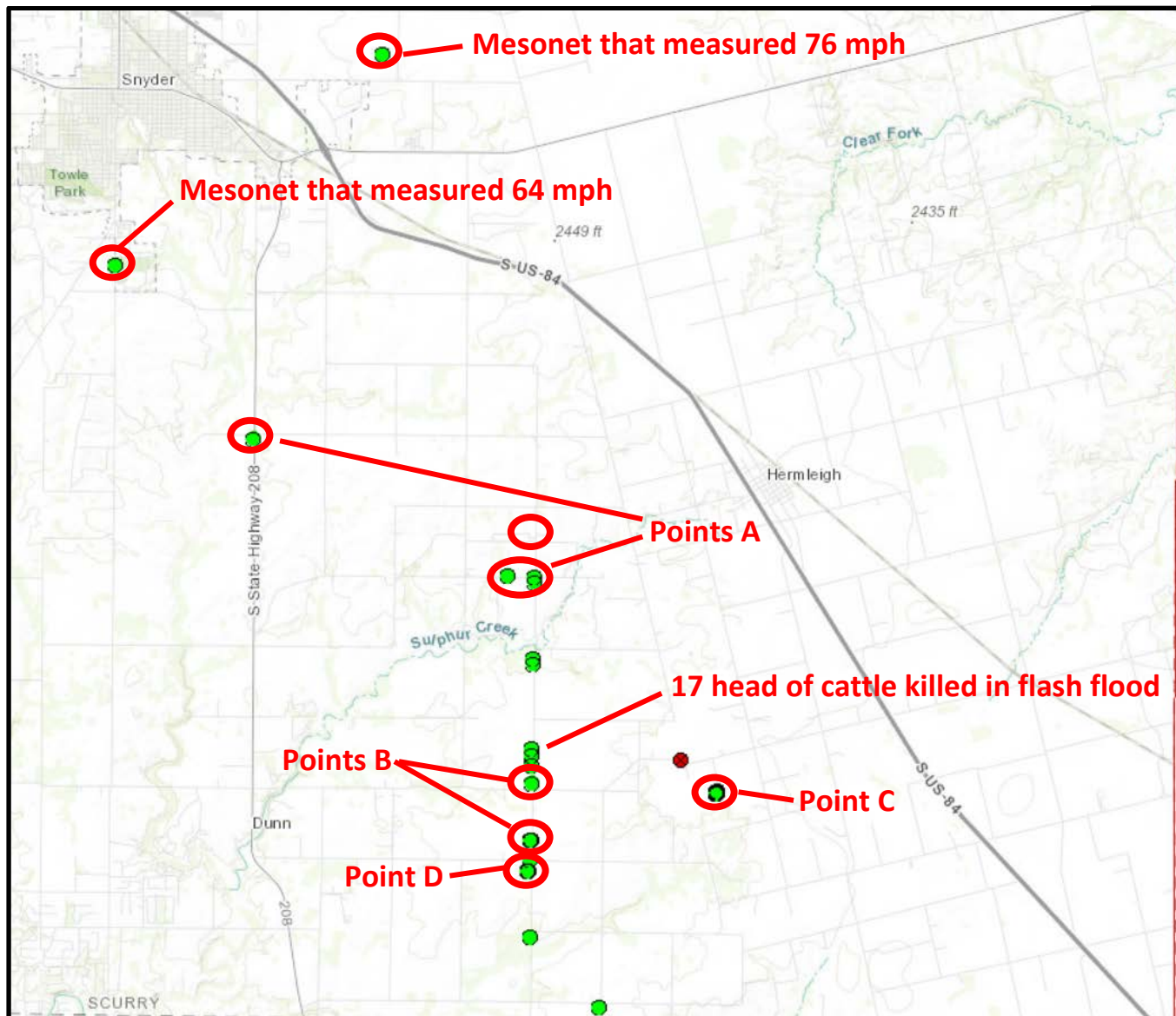
Scurry County

Late evening on June 7, 2018, thunderstorms developed behind an outflow boundary across eastern portions of Scurry County Texas. These storms quickly became severe east of Snyder and produced gusty, damaging winds mainly across southeast portions of the county. Around 11:45 PM, a 76 mph wind gust was measured at the West Texas Mesonet 3 miles east of Snyder and a 64 mph wind gust was measured 3 miles south-southwest of Snyder. The strong winds blew a tractor-trailer over on Hwy 208, southeast of Snyder. Very heavy rain also fell from this storm with the Mesonet 3 miles east of Snyder reporting 2.24" of rain in just 25 minutes! One rancher lost 17 head of cattle in the flash flood.



The figures below show points of damage followed by pictures of damage taken during the survey in Scurry County.

Damage points in Scurry County



Points A and B

Winds nearing 100-110 mph snapped and mangled numerous wooden power poles (over 200) across the southeast portion of Scurry County.



Point C

Straight-line winds near 85-90 mph ripped apart a metal barn out near FM 1606 and CR 4105. Winds blew into the southeast facing opening of the building, lifting the roof and blowing out the walls. Parts of the metal roof were blown about 300 yards downwind, or northwest, of the original location of the barn.



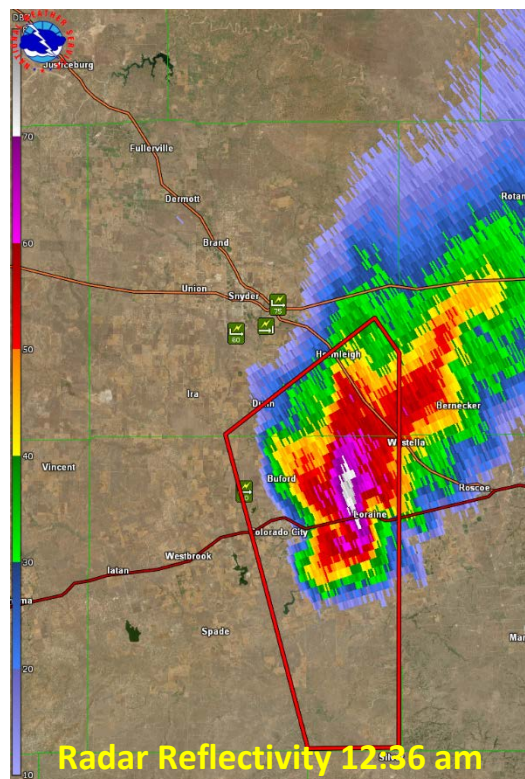
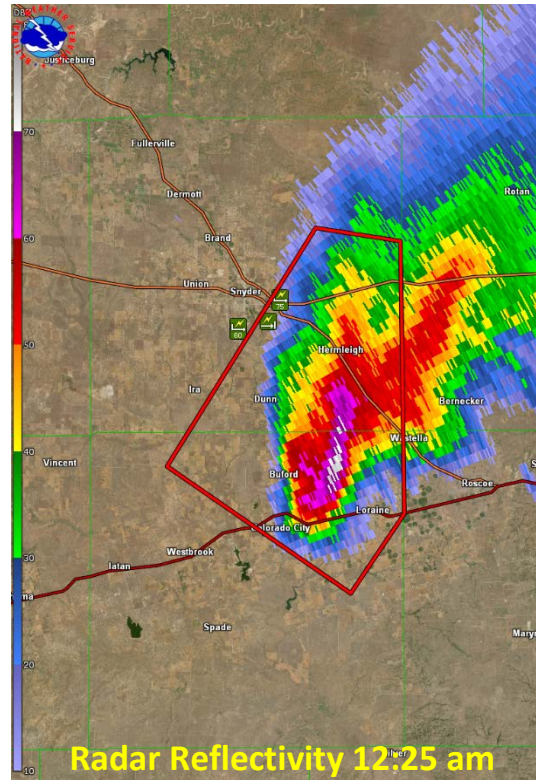
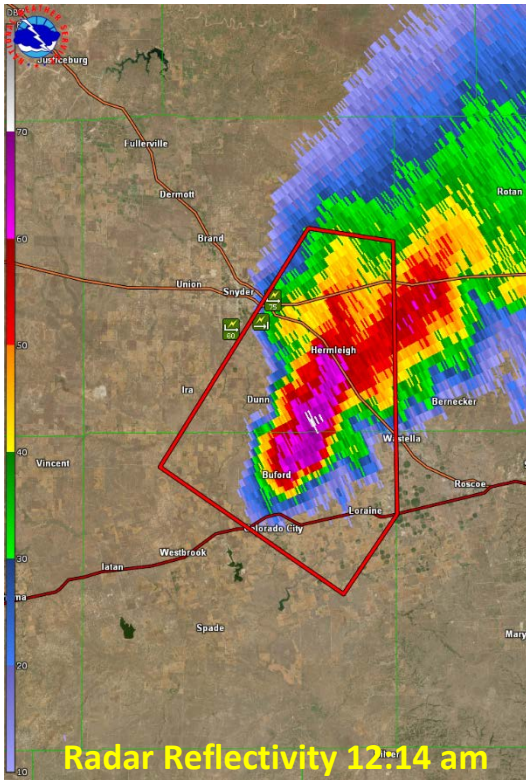
Point D

Severe winds overturned a manufactured home near CR 4136 and CR 465 that resulted in 1 injury. This home was properly anchored to the ground but the survey team found that the estimated 110-120 mph winds caused the tie-down straps to fail and the house to roll from its original location.



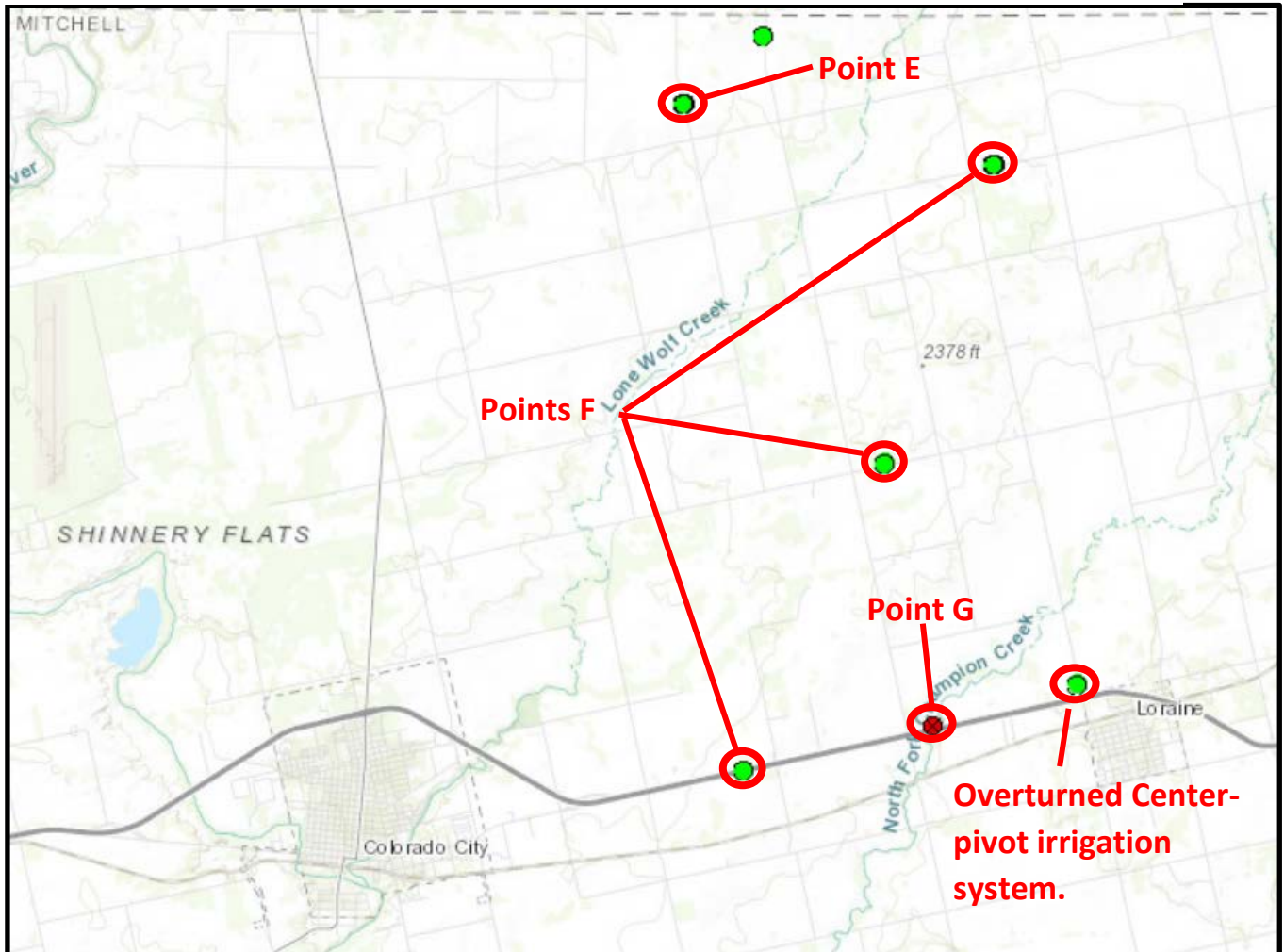
Mitchell County

As the severe storm advanced south into Mitchell County just after midnight early on June 8, 2018, it continued to produce damaging wind gusts over 60 mph. The Colorado City Mesonet measured a 63 mph wind gust around 12:30 AM. Heavy rainfall also persisted, resulting in flood waters that shut down a portion of I-20 for several hours.



The figures below show points of damage followed by pictures of damage taken during the survey in Mitchell County.

Damage points in Mitchell County



Point E

A small barn with iron girders had been found totally destroyed along CR 452, near CR458. Pieces of the barn had been blown into the adjacent field to the west southwest. A concrete safe room can be seen in the photo still standing. This damage suggests straight-line winds nearing 115 mph across this location.



Points F

A total of 86 steel lattice transmission towers were found either bent or completely broken in a line from northeast Mitchell County southwest to the south side of Interstate 20. This damage indicates wind speeds of 110-115 mph.



Point G

The quick burst of heavy rainfall associated with the storm resulted in flash flooding across portions of the area. A pickup truck was found washed off the I-20 feeder road at North Fork Champion Creek (pictured below). The water line on the bridge suggested the water was near 10 feet deep over the feeder road at one point.



In conclusion, the damage was determined to be caused by a severe thunderstorm that produced straight-line winds ranging from speeds of 85-120 mph and areas of flash flooding mainly across portions of southeast Scurry County and northeast Mitchell County.

Severe Wind Area

