

May 16th, 2021 Snyder, TX Hailstorm

On the evening of May 16th, 2021, several severe thunderstorms developed across portions of the northeast Permian Basin (Figure 1), producing very large hail as they moved northeast across Scurry and Mitchell Counties. One storm in particular strengthened significantly as it approached the city of Snyder, dropping giant hail of up to baseball to softball size over much of the city. The hail damaged numerous vehicles, homes, and other structures, especially on the east side of the city.

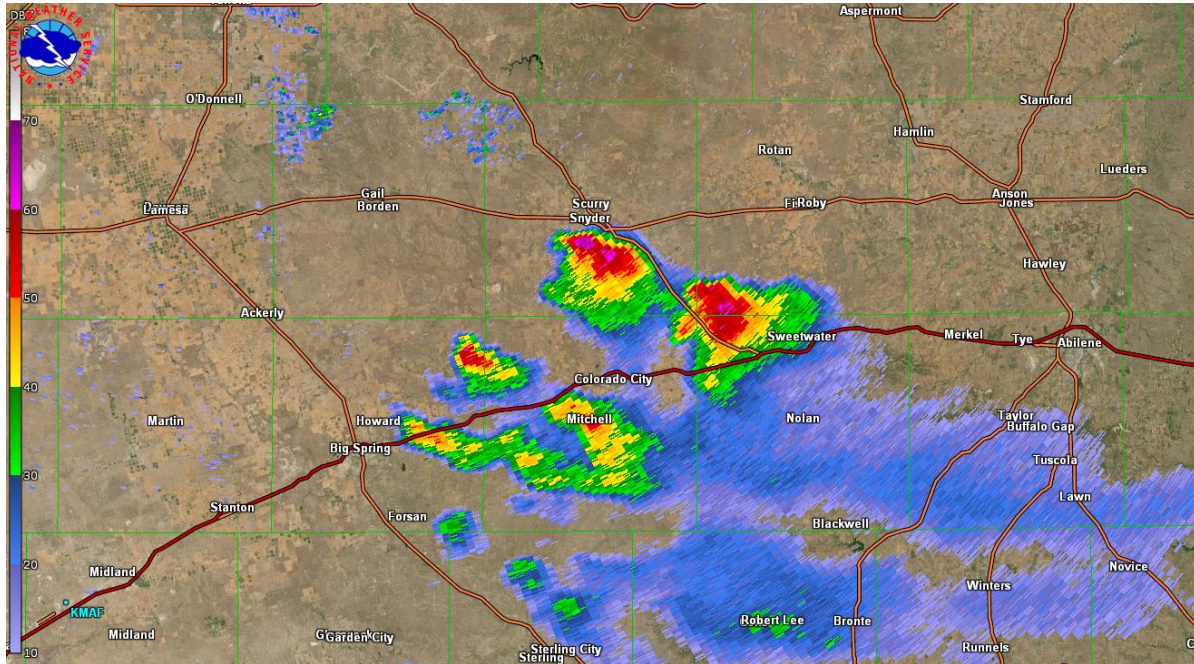


Figure 1. KLBK 0.5 deg reflectivity at 8:43 PM CDT.

The storm initially formed near Big Spring then split just east of Big Spring. The “left mover” quickly moved off to the northeast toward Snyder (Figure 2) while the “right mover” continued east and quickly dissipated over Mitchell County.

Figure 2. Storm approaching Snyder.

Photo Credit: Nathan Hines



The first report of large hail in Snyder occurred at 8:50pm for golf ball to baseball size hail. The second report came in just 4 minutes later with softball size hail falling across portions of Snyder. The storm continued to track northeast over the next 10-15 minutes and finally exited the city just after 9 pm. See reported images below.



Photo Credit: Jason Gruben



Photo Credit: Michele Quiros



Photo Credit: Nathan Hines

On Monday, May 17, the National Weather Service conducted a damage survey, noting widespread severe damage across much of the city of Snyder. Some damage observed included numerous broken windows, busted solar panels, severely damaged roofs, and around 6 injuries reported. Nearly every car that was exposed to the hail received broken windows and were heavily dented. Many vehicles were likely totaled. Information on the areas affected (Figure 3) and pictures of assessed damage can be found below.

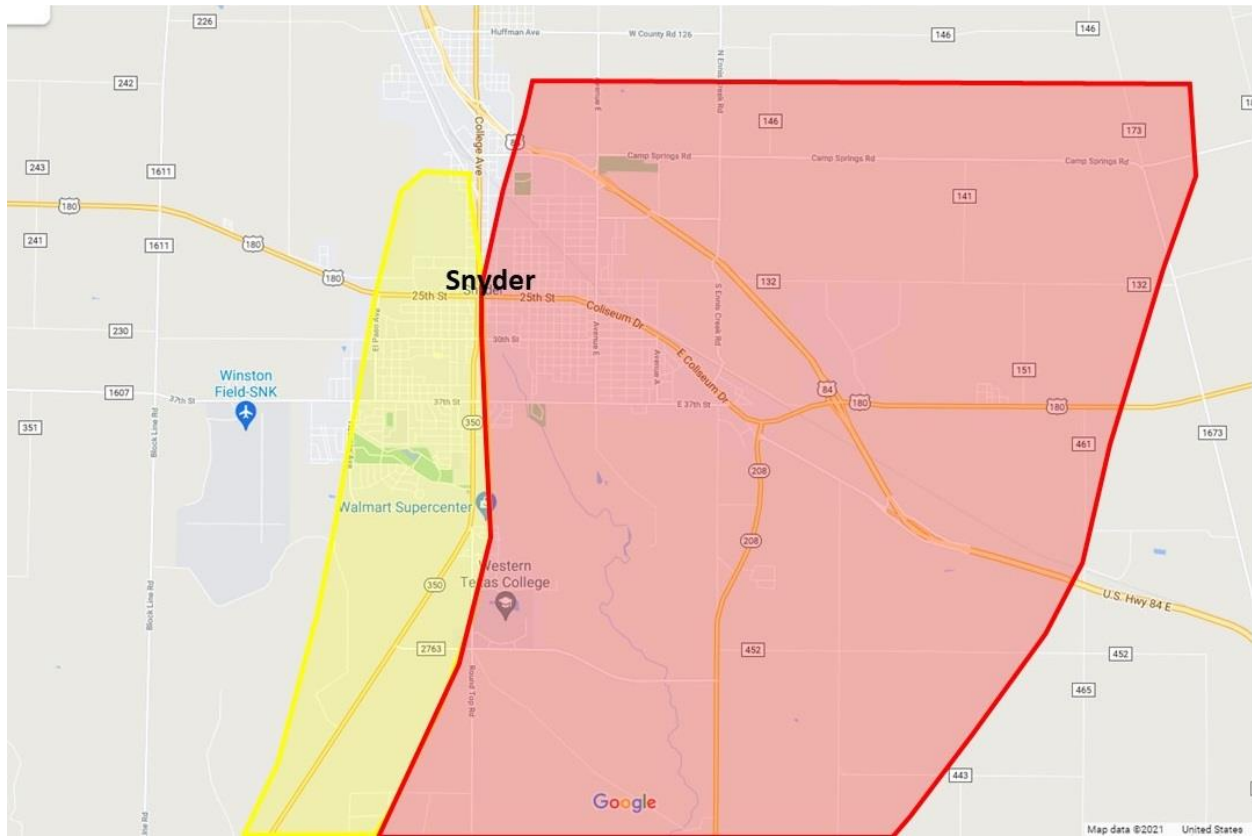
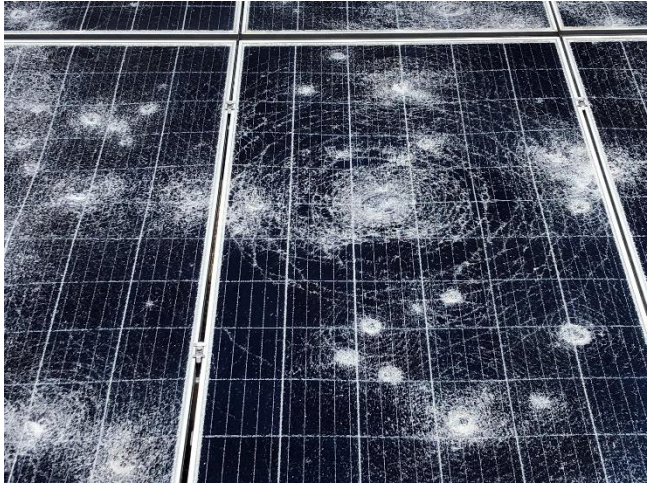


Figure 3. Hail swath map shows a large area affected by softball size hail (shaded in red) and a smaller area affect by baseball size hail (shaded in yellow). This map was generated with the help of Snyder Fire Marshal and Deputy EMC, Nathan Hines.



Another notable storms on this day included a supercell in Mitchell County that produced baseball size hail in Colorado City, TX (Figure 4).



Figure 4. Supercell thunderstorm near Colorado City, TX, photo courtesy of Shannon Tubb.

**** Special thanks to Snyder Fire Marshal and Deputy Emergency Management Coordinator, Nathan Hines, for assisting with this damage survey.**