

WFO Midland, Texas

MONTHLY REPORT OF HYDROLOGIC CONDITIONS

REPORT FOR:

MONTH

YEAR

May

2022

SIGNATURE

J. DeBerry

In Charge of HSA

DATE

June 15, 2022

TO: Hydrometeorological Information Center, W/OH2
NOAA / National Weather Service
1325 East West Highway, Room 7230
Silver Spring, MD 20910-3283

When no flooding occurs, include miscellaneous river conditions, such as significant rises, record low stages, ice conditions, snow cover, droughts, and hydrologic products issued (NWS Instruction 10-924)

An X inside this box indicates that no river flooding occurred within this hydrologic service area.

On May 1st, severe thunderstorms developed along the dryline. An HP supercell moved into Scurry County, and dumped 4-5" of rainfall at Snyder, rendering multiple roads impassable across the southern half of the county, necessitating high water rescues. Deep Creek near Dunn briefly spiked into moderate flood stage on the morning of the 2nd..

A few other hydrologic events occurred during May, but no flooding was reported. Rainfall was on an uptick in May, but the drought is far from over.

Precipitation amounts from area ASOS's:

City	ASOS ID	May	April
Carlsbad, NM	KCNM	T	0.00"
Fort Stockton	KFST	0.82"	T
Guadalupe Pass	KGDP	0.00"	0.00"
Midland Int'l	KMAF	0.11"	0.05"
Odessa	KODO	0.19"	0.00"
Terrell County	K6R6	0.54"	0.03"
Wink	KINK	0.04"	0.00"

Precipitation amounts from area AWOS's:

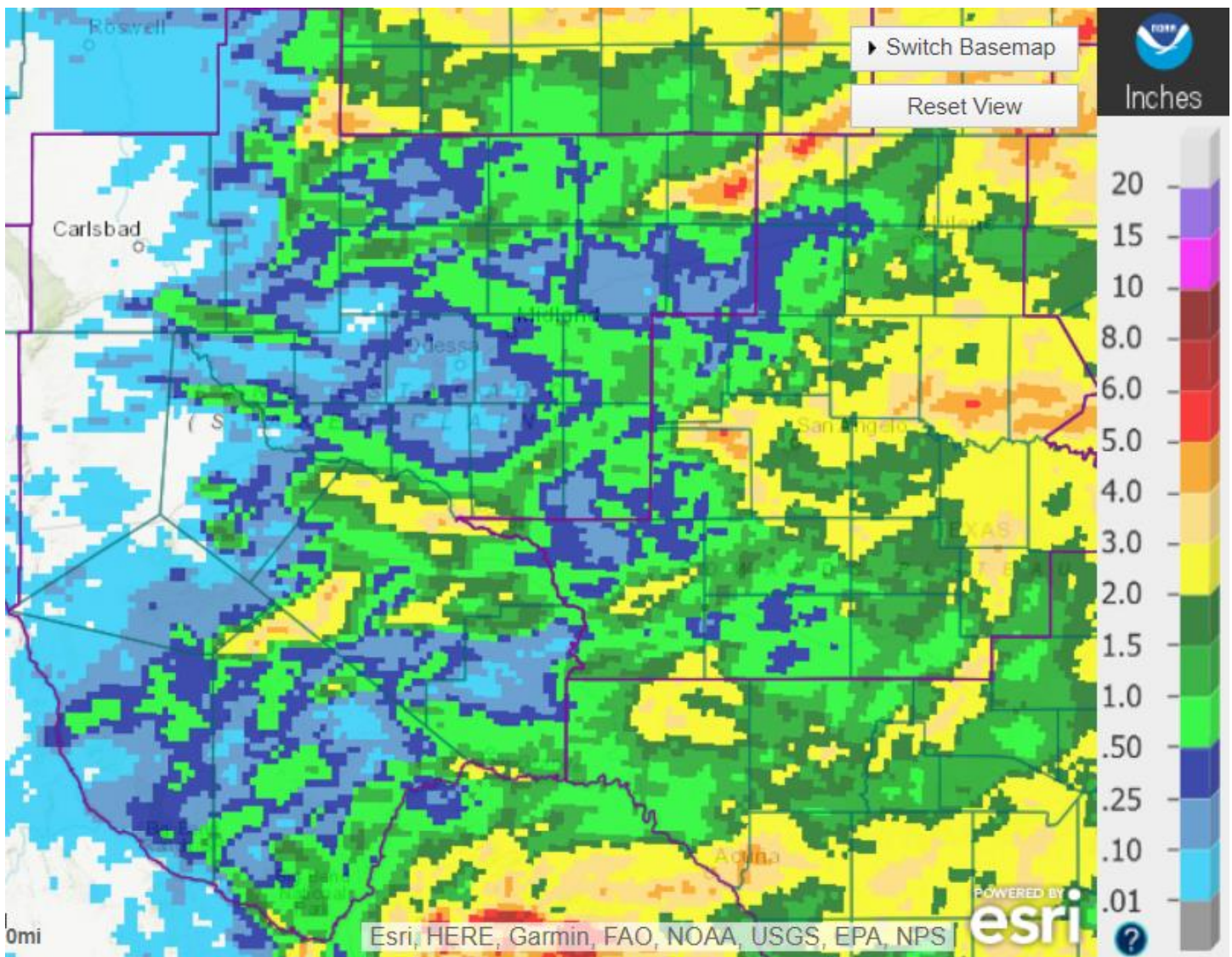
City	AWOS ID	May	April
Alpine	KE38	0.91"	0.00"
Andrews County	KE11	0.58"	0.00"
Artesia, NM	KATS	0.03"	0.00'
Big Spring	KBGP	0.09"	0.28"
Culberson County	KVHN	0.00"	0.02"
Gaines County	KGNC	0.66"	0.00"
Hobbs, NM	KHOB	0.16"	0.00"
Lamesa Municipal	KLUV	0.45"	0.00"
Marfa	KMRF	0.20"	T

Midland Airpark	KMDD	0.25"	0.03"
Pecos County	KPEQ	0.00"	0.01"
Presidio County	KPRS	0.09"	0.00"
Reagan County	KE41	M	M
Snyder	KSNK	3.44"	0.22"

Some other locations in the HSA that received notable amounts of precipitation for May were:

Nadine, Lea County 1.59"
 McCamey, Upton County 1.72"
 Coyanosa, Pecos County 1.82"
 Castolon, Brester County 2.08"

86 locations reported rainfall for the month of May, for an HSA average of 0.50".



May Precipitation

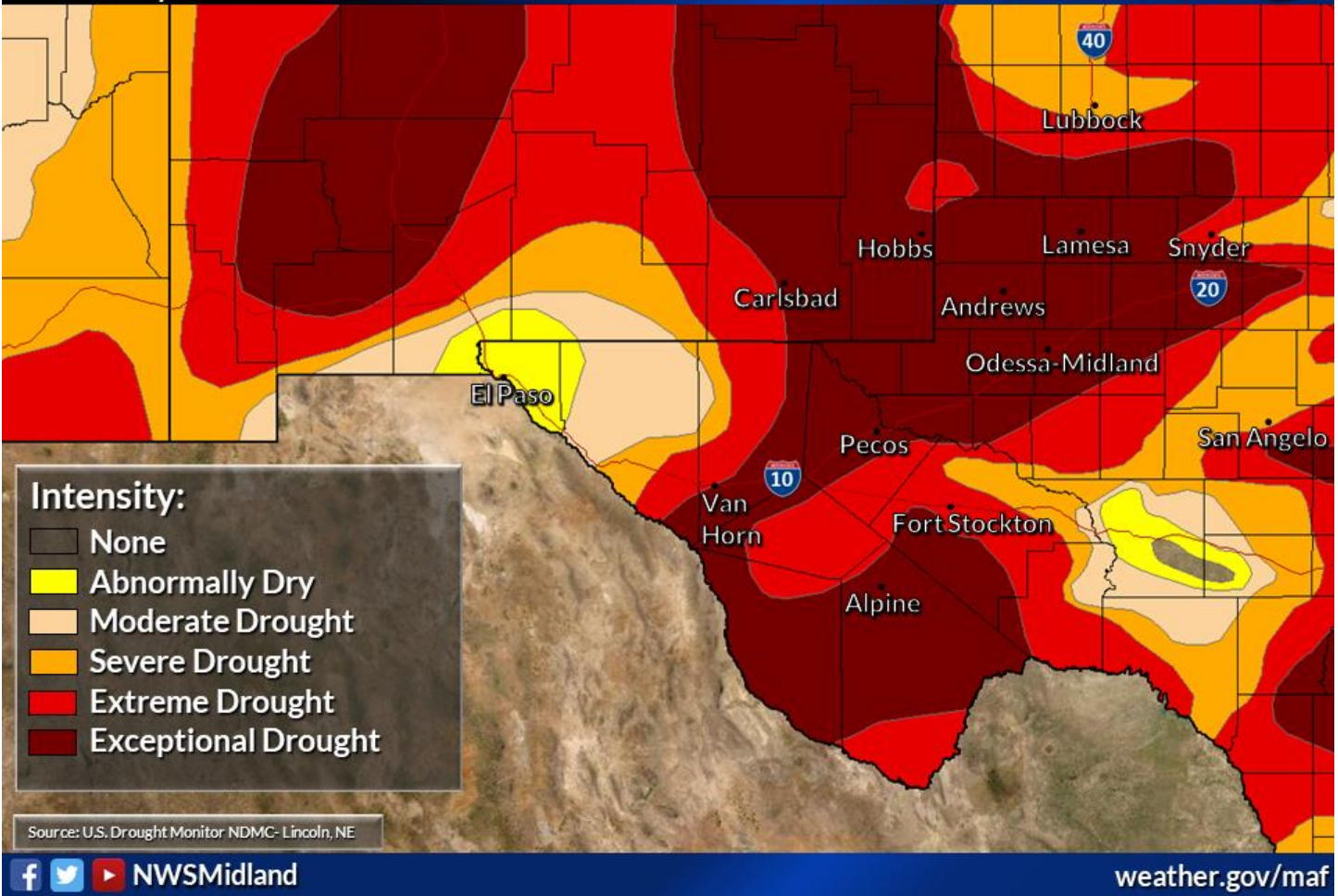
Normal May precipitation for Midland International Air and Space Port is 1.57". Total precipitation for 2022 ending June 1st was 0.48", or 3.71" below normal.

Latest Drought Conditions

Weather Forecast Office
Midland/Odessa, TX
Issued June 2, 2022 7:59 PM CT



Valid 31 May 2022



Reservoir levels across the HSA averaged 54.1% of conservation capacity as of June 1st:

Reservoir (County, State)	June 1 Conserv Cap (%)	May 1 Conserv Cap (%)
JB Thomas (Scurry, TX)	32.9	36.7
Colorado City (Mitchell, TX)	65.5	70.7
Champion Creek (Mitchell, TX)	64.8	67.8
Natural Dam Salt Lake (Howard, TX)	48.4	48.4
Moss Creek (Howard, TX)	78.0	74.0
Brantley (Eddy, NM)	32.0	68.0
Avalon (Eddy, NM)	47.0	34.0
Red Bluff (Reeves, TX)	69.2	74.5

Non-Routine Products Issued for May:

Flash Flood Watches (FFA): 0
Flash Flood Warnings (FFW): 6
Flash Flood Statements (FFS): 7
Flood Advisories/Statements (FLS): 21

Flood Warnings (FLW): 1

Total Non-Routine Products Issued: 35

**cc: email: COE ABQ, HIC, IBWC ELP, IBWC PRD, LCRA, NWS ABQ, NWS EPZ, NWS LBB,
NWS MAF, NWS SJT, SRH, TAMU, TCEQ, USGS CNM, USGS SJT, WGRFC**