



# NOAA, National Weather Service Middle Atlantic River Forecast Center Briefing

Thursday, September 29, 2016

Prepared by:

Peter Ahnert

[Peter.Ahnert@noaa.gov](mailto:Peter.Ahnert@noaa.gov)

# Key Points

## FLOOD THREAT ACROSS PORTIONS OF THE MID-ATLANTIC OVER THE NEXT SEVERAL DAYS

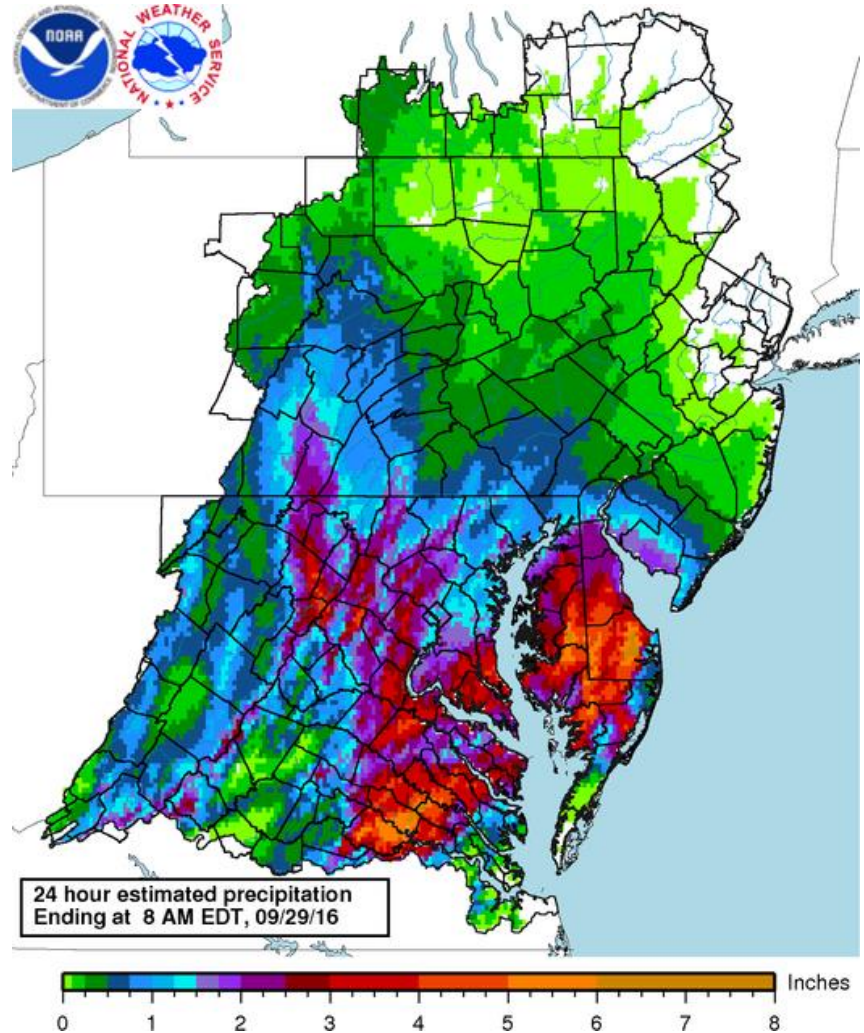
- **Risk: Flash Flooding, Small Stream Flooding, Urban Flooding, Minor River Flooding and Minor-Moderate Tidal Flooding** across portions of the Mid-Atlantic. Heavy rain of 3-6 inches that fell overnight in some areas has resulted in localized Flash Flooding Small Stream Flooding, and Urban Flooding. Additional 1-4 inches of rain are likely today in parts of the region and will likely lead to additional flooding.
- **Location:** Heavy rain and flooding today and tonight is most likely from south-central Pennsylvania into Maryland, northern Virginia, and the eastern panhandle of West Virginia.
- **Timing: Highest Threat is Today and Tonight.** However, river and tidal flooding is possible into the weekend.
- **Confidence: Moderate.** Heavy rain has already fallen in many areas overnight and additional heavy rain is likely through tonight. This will likely cause additional flooding problems in some areas.
  
- **Note:** While this briefing mainly addresses river flooding, there is also a risk of localized flash flooding, small stream flooding, urban flooding, and poor drainage flooding thru this event. There is also a risk of minor-moderate tidal flooding in some coastal areas. Please refer to watches and warnings from your local National Weather Forecast Office for additional information.

# Observed Precipitation

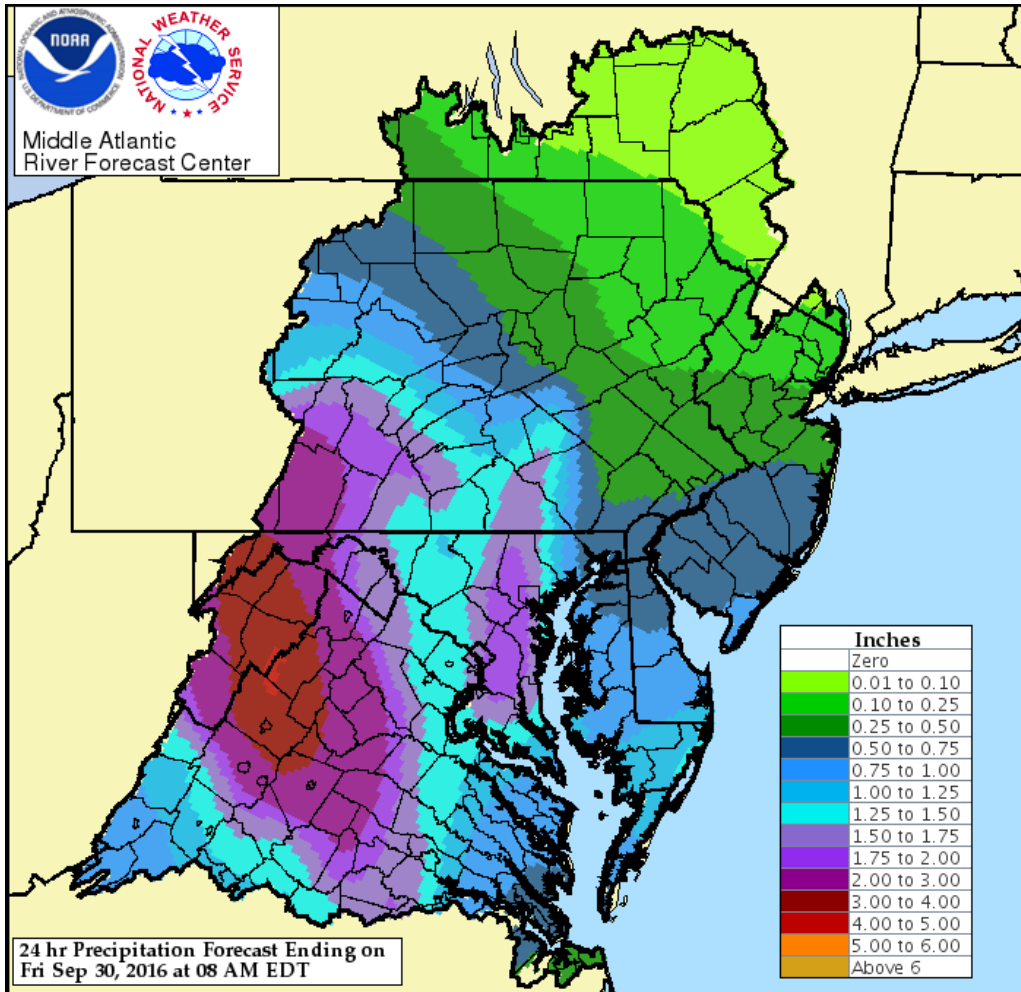
During the 24 hours ending at 8AM on Thursday, some areas received 2-5 inches of rain.

Isolated higher amounts up to 7 inches fell in Delaware and Virginia.

Localized flash flooding, small stream flooding, and urban flooding was reported overnight in portions of Delaware, Maryland, and Virginia.



# 24 Hour Precipitation Forecast



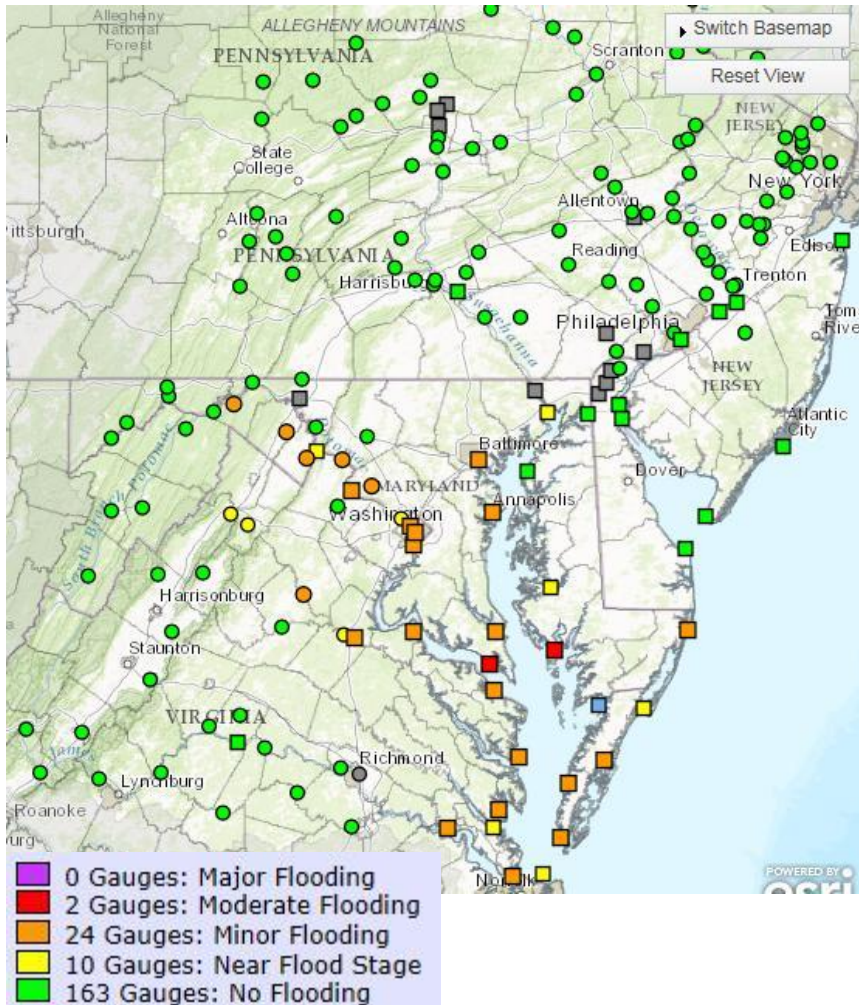
Areas of Heavy Rain will continue to develop over 24 hours from 8AM Thursday until 8AM Friday.

Amounts of 2-5 inches are expected from south-central Pennsylvania across much of Maryland and northern Virginia.

Local Heavy Downpours could lead to localized higher amounts.

Lighter amounts of rain will continue on Friday and into the weekend.

# Official River Forecasts (as of noon on Sept 29)

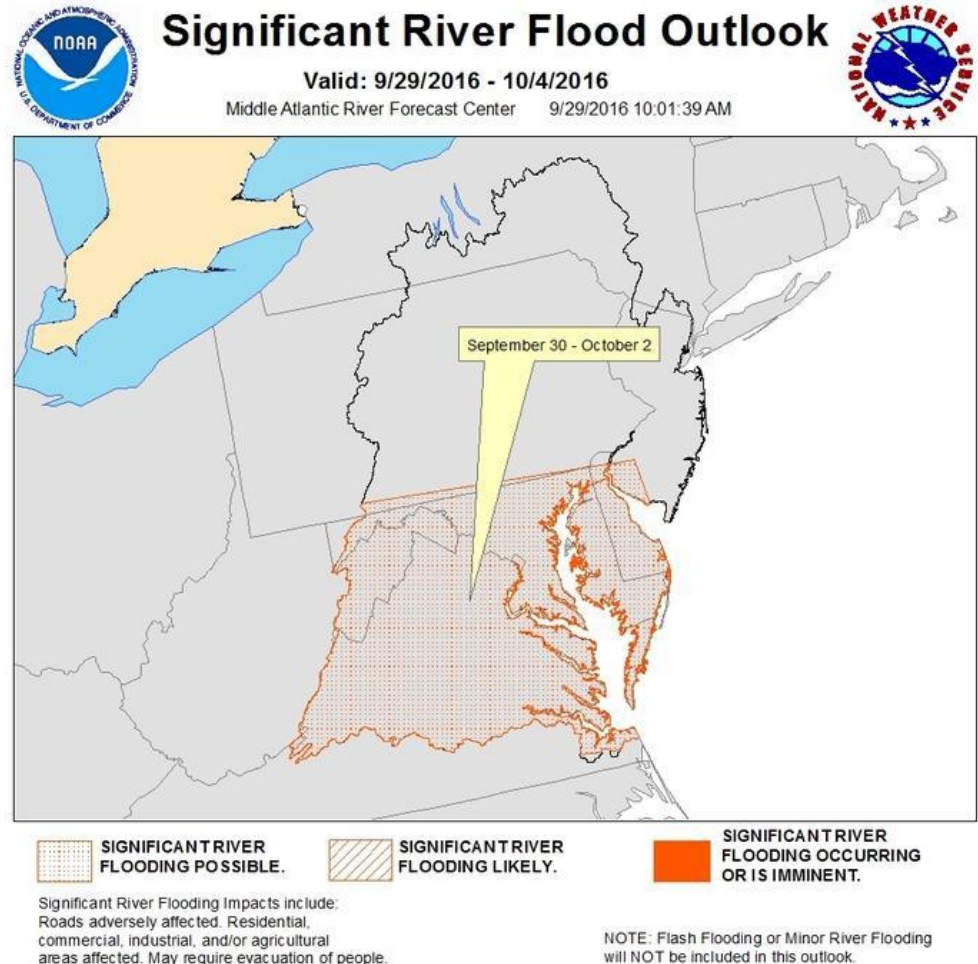


- Minor flooding is forecast along the following tributaries of the Potomac river as early as this evening:
  - Seneca Creek at Dawsonville, MD
  - Opequon Creek at Martinsburg, WV
  - Cacapon River near Great Cacapon, WV
- Minor Flooding is possible on middle and lower portions of the Potomac and Shenandoah rivers Saturday and Sunday.
- Minor Tidal flooding in Washington DC and Alexandria, VA is also likely today through Sunday.
- Minor to moderate coastal flooding is likely today and Friday along the Chesapeake Bay, the Delmarva peninsula, and coastal Delaware.
- Minor to moderate coastal flooding is likely beginning tonight for coastal New Jersey (not shown on map).

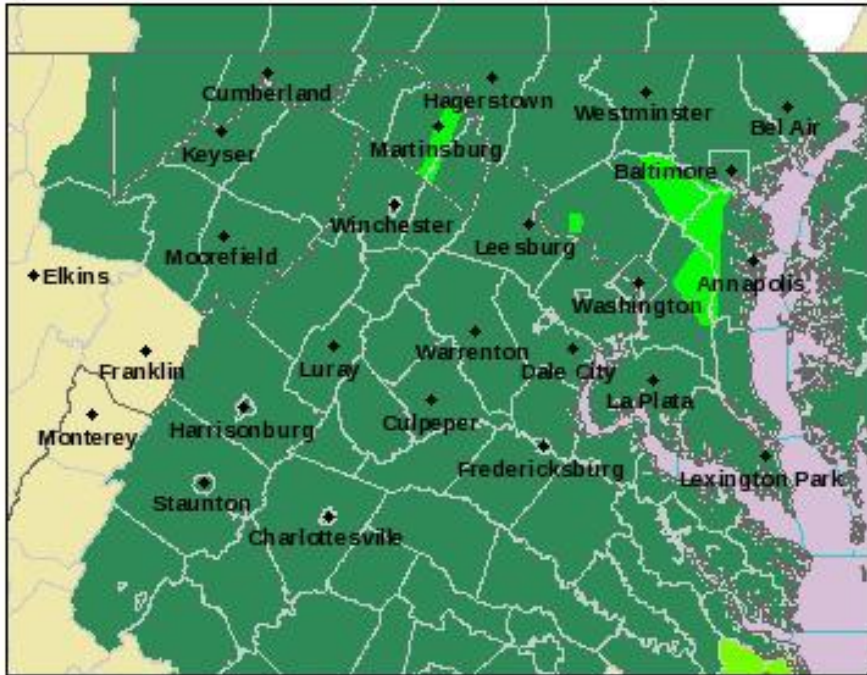
For the latest forecasts go to: [www.weather.gov/marfc](http://www.weather.gov/marfc)

# Significant Flood Outlook

- Currently, we are only forecasting minor flooding for portions of the Potomac River basin and some Potomac River tributaries.
- However, there is still a low risk (30% or less chance) of moderate or greater flooding on one or two small river basins somewhere (orange hatched area on the map). This is possible if heavy rainfall persists over the basin for several hours or more.



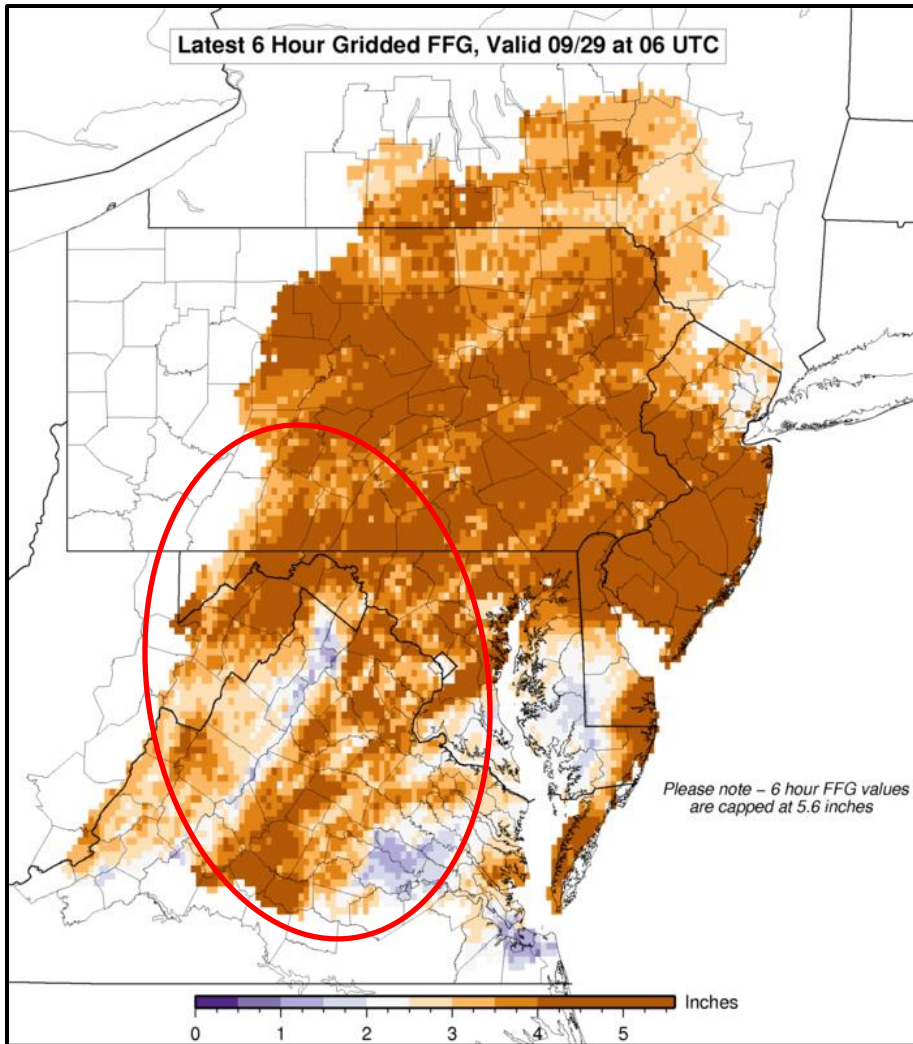
# Watches and Warnings



- As of Thursday morning, **Flood Warnings** (light green) are currently in effect for portions of Maryland, Virginia, and West Virginia.
- Coastal flood advisories or warnings (not shown) are in effect for the Chesapeake Bay, coastal Delaware, coastal New Jersey and tidal rivers.
- Flood watches (dark green) are in effect for Maryland, Delaware, and portions of Virginia, West Virginia, and Pennsylvania.

For the latest watches and warnings go to:  
[www.weather.gov](http://www.weather.gov)

# Small Streams and Low Lying Areas



Rainfall during the past 24 hours has lowered flash flood guidance in some areas (light to dark purple shading on map). In these areas (light to dark purple shading on map), an additional 1-2 inches in 3 hours are necessary to cause small stream flooding.

Conditions have been fairly dry over the past couple of months which means many streams can handle more rainfall than usual (brown shaded areas).

Moderate risk of additional small stream, urban, or flash flooding today in areas that receive heavy rainfall (red oval = moderate risk area).



# Need more info?

- Contact your local NWS Weather Forecast Office
  - Binghamton, NY <http://weather.gov/bgm>
  - Blacksburg, VA <http://weather.gov/rnk>
  - Mt Holly, NJ <http://weather.gov/phi>
  - State College, PA <http://weather.gov/ctp>
  - New York City, NY <http://weather.gov/okx>
  - Sterling, VA <http://weather.gov/lwx>
  - Wakefield, VA <http://weather.gov/akq>
- Email: [peter.ahnert@noaa.gov](mailto:peter.ahnert@noaa.gov)

# Find MARFC Online at:

- Homepage: <http://weather.gov/marfc>
- Facebook: <https://www.facebook.com/NWSMARFC>
- Twitter <http://twitter.com/NWSMARFC>

# Next MARFC Briefing

- **This briefing will be updated with the latest information on Friday, September 30 around noon**