



Drought Information Statement for the Mid-South

Valid 03/21/2024

Issued By: NWS Memphis, TN

Contact Information: sr-meg.wx@noaa.gov

- This product will be updated April 4, 2024, or sooner if drought conditions change significantly.
- Please see all currently available products at <https://drought.gov/drought-information-statements>.
- Please visit <https://www.weather.gov/meg/DroughtInformationStatement> for previous statements.



**National Oceanic and
Atmospheric Administration**

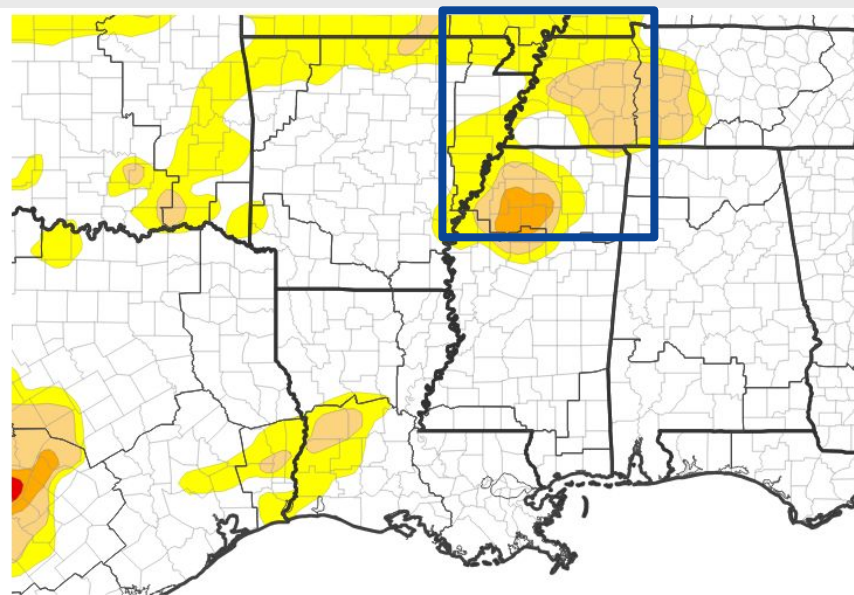
U.S. Department of Commerce



U.S. Drought Monitor

Link to the [latest U.S. Drought Monitor](#) for the Mid-South

- DROUGHT IMPROVING
- Drought intensity and extent
 - D4 (Exceptional Drought): None.
 - D3 (Extreme Drought): None.
 - D2 (Severe Drought): Continuing in northwest MS.
 - D1 (Moderate Drought): Continuing across northwest and north-central MS as well as much of West TN.
 - D0 (Abnormally Dry): Confined to portions of north MS, West TN, the Missouri Bootheel, and east-central AR.



U.S. Drought Monitor



Image Caption: U.S. Drought Monitor valid 7am EST March, 19, 2024





Recent Change in Drought Intensity

Link to the latest [4-week change map](#) for the Mid-South U.S. Drought Monitor 1-Week Change Map

- One-Week Drought Monitor Class Change
 - No change: Much of north MS, West TN, and east-central AR.
 - Drought improved: Portions of northwest and north central MS, portions of West TN, and portions of eastern AR.
 - Drought worsened: None.

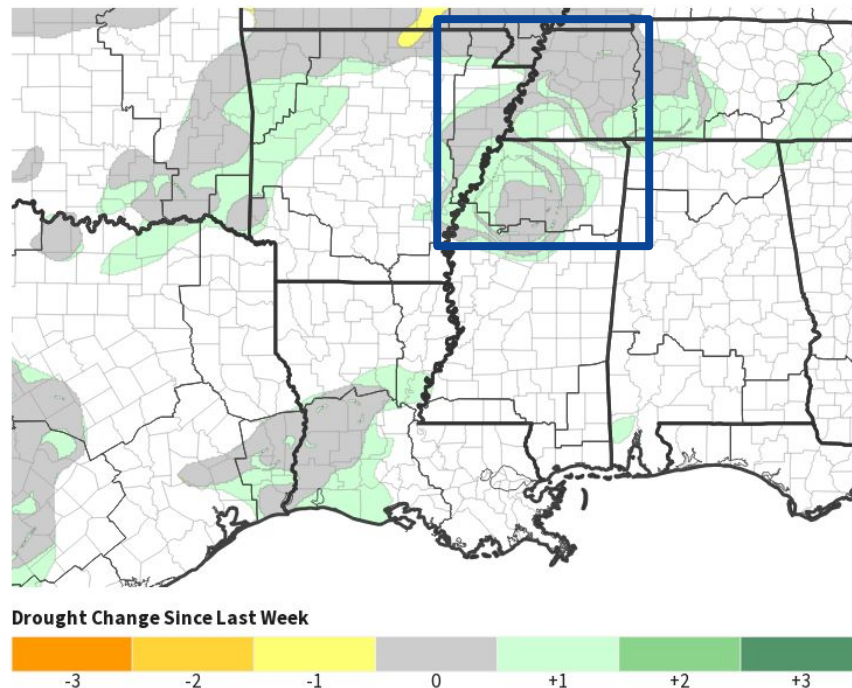


Image Caption: U.S. Drought Monitor 1-week change map valid 7 a.m. EST March 19, 2024

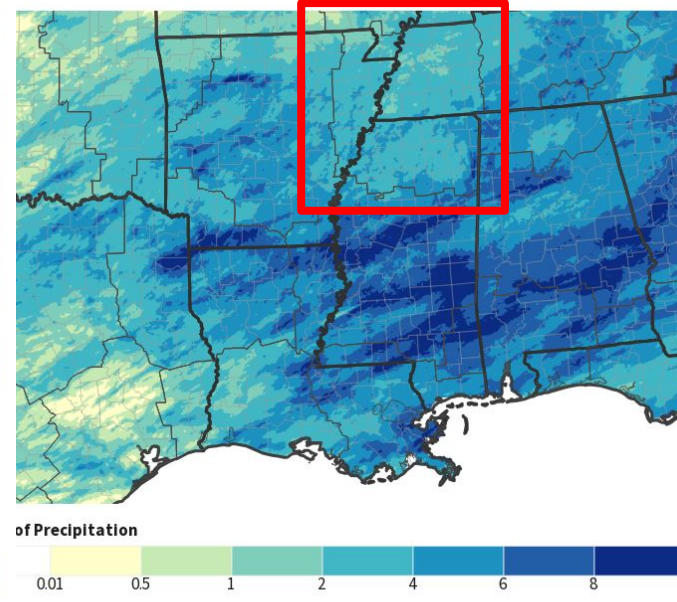
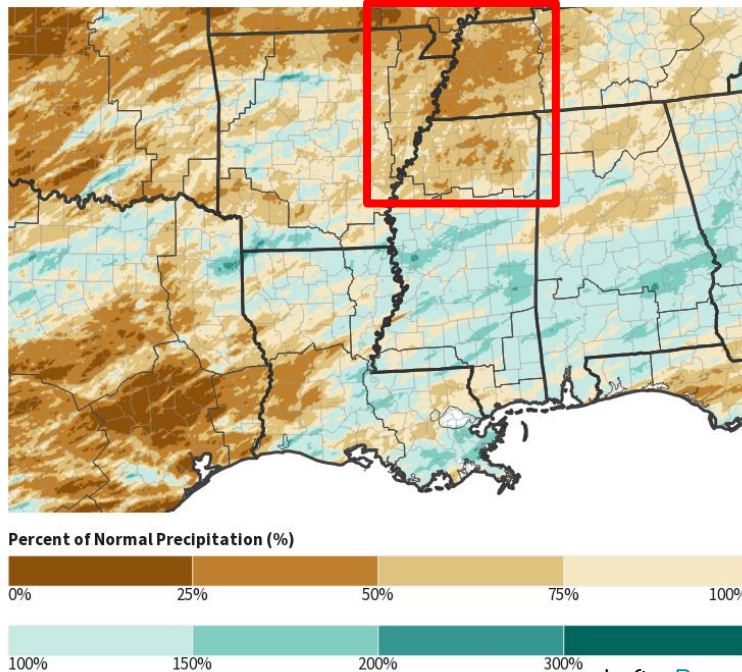




Precipitation

Over the past 30 days from the [High Plains Regional Climate Center](#)

- Precipitation totals over the past 30 days generally ranged from 1-2" across the Mid-South with localized higher and lower amounts.
- Rainfall amounts over the past 30 days were widely below normal.



Left - [Percent of Normal Precipitation for NWS-Southern Region East](#)

Right - [Precipitation for NWS- Southern Region East](#)

Data Courtesy High Plains Regional Climate Center.

Data over the past 30 days ending March, 21, 2024

Image Captions:



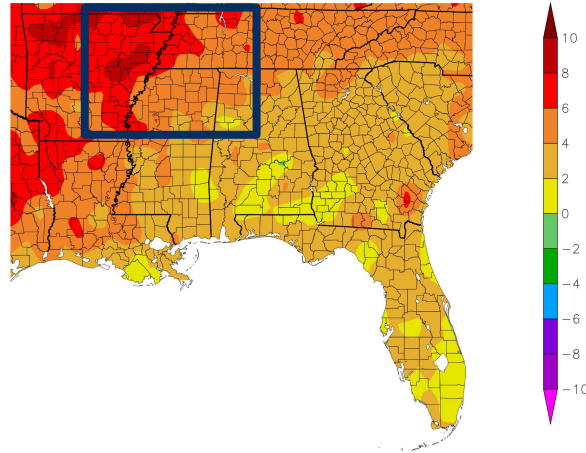


Temperature

Data over the past 30 days from the [High Plains Regional Climate Center](#)

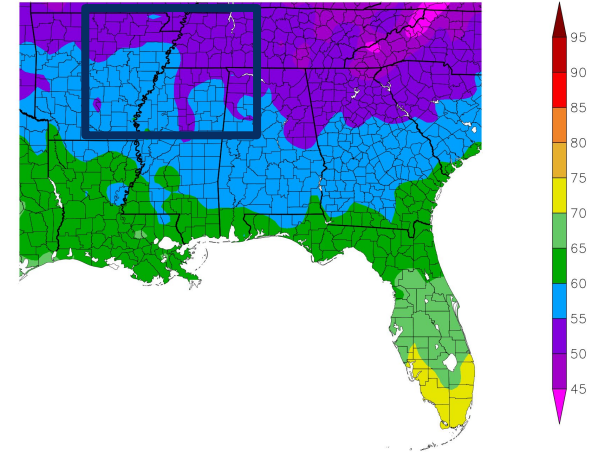
- Average temperatures have generally ranged from 50-60 degrees across the region over the last 30 days.
- Average temperatures were generally 2 to 8 degrees above normal across the region over the last 30 days.

Departure from Normal Temperature (F)
2/20/2024 – 3/20/2024



Generated 3/21/2024 at HPRCC using provisional data

Temperature (F)
2/20/2024 – 3/20/2024



NOAA Regional Climate Center 24 at HPRCC using provisional data

NOAA Regional Climate Center

Image Captions:

Left - [Departure from Normal Temperature](#)

Right - [Average Temperature](#)

Data Courtesy High Plains Regional Climate Center.
Data over the past 30 days ending March 20, 2024





Summary of Impacts

Links: See/submit [Condition Monitoring Observer Reports \(CMOR\)](#) and view the [Drought Impacts Reporter](#)

Hydrologic Impacts

- No significant impacts. Stream flow is normal. Upstream snowmelt will bring water levels to near normal range.

Agricultural Impacts

- There are no known impacts at this time.

Fire Hazard Impacts

- The Missouri Bootheel has experienced above normal wildland fire activity and north Mississippi has experienced below normal wildland fire activity for the month of March. This trend is likely to continue into April.

Other Impacts

- There are no known additional impacts at this time.

Mitigation Actions

- Please refer to your municipality and/or water provider for mitigation information.





Hydrologic Conditions and Impacts

Thursday, March 21, 2024 21:30ET

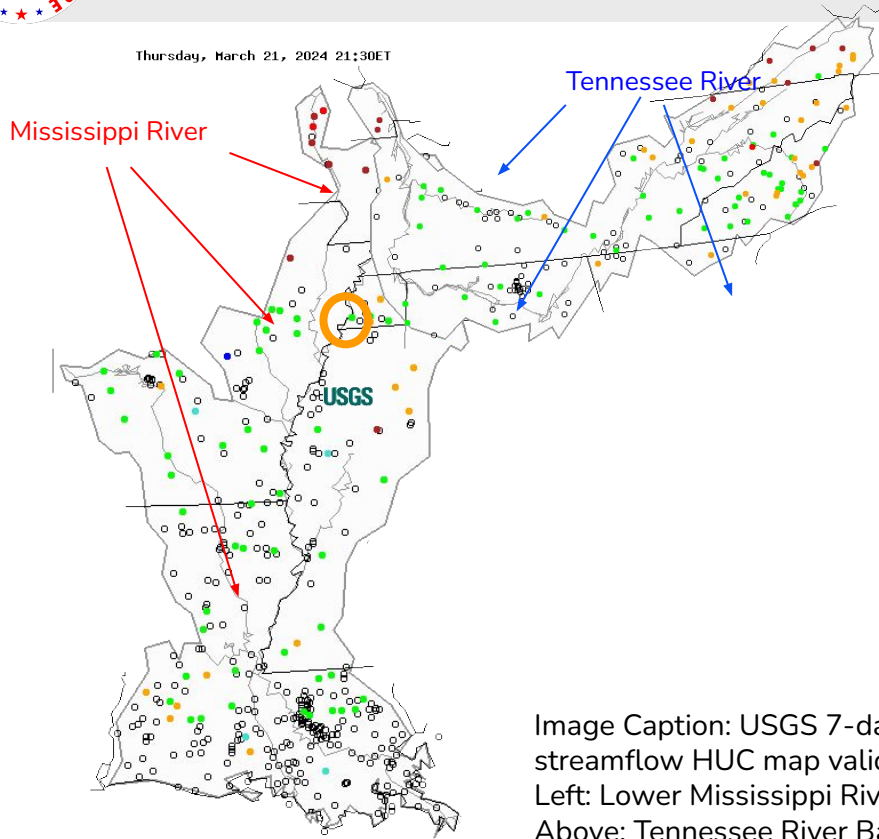


Image Caption: USGS 7-day average streamflow HUC map valid 3/21/2024
Left: Lower Mississippi River Basin
Above: Tennessee River Basin

- The **Mississippi River at Memphis** is experiencing normal flow. The extended river forecasts indicate a crest followed by a potential decline.
- The Tennessee River feeds into the Mississippi River remains near normal at between Savannah, TN, and Kentucky Lake.



Fire Hazard Impacts

Link to [Wildfire Potential Outlooks from the National Interagency Coordination Center](#).

- Normal and below normal wildland fire is expected for March. The Missouri Bootheel has the potential for above normal wildland fire activity for March and April.
- Burn Bans currently in effect for:
 - [Arkansas](#): None.
 - [Missouri](#): None.
 - [Mississippi](#): None.
 - [Tennessee](#): None.

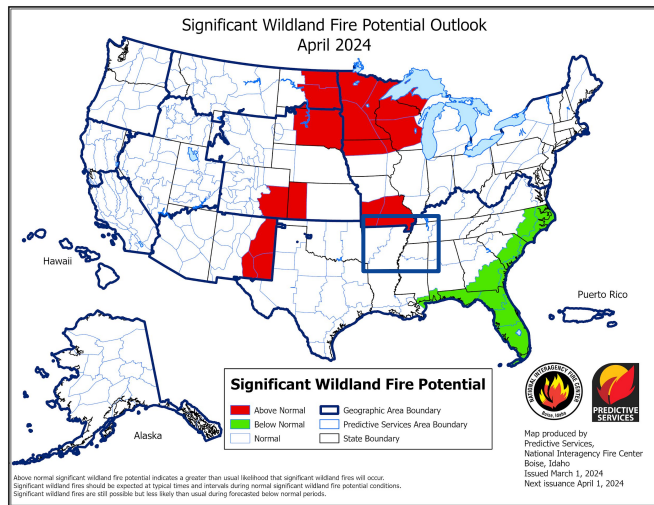
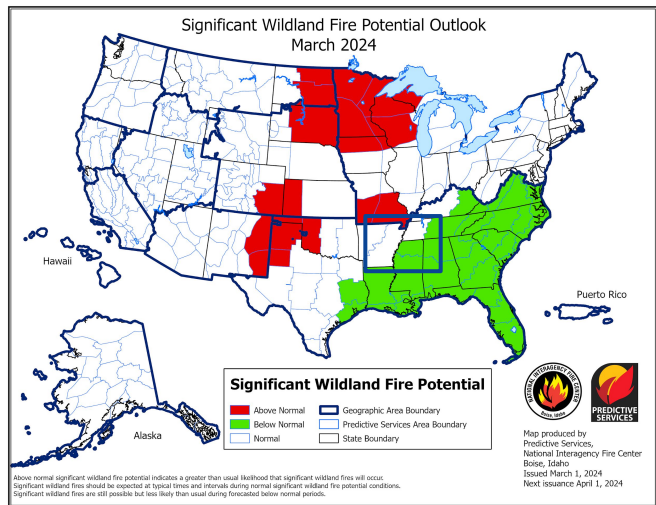


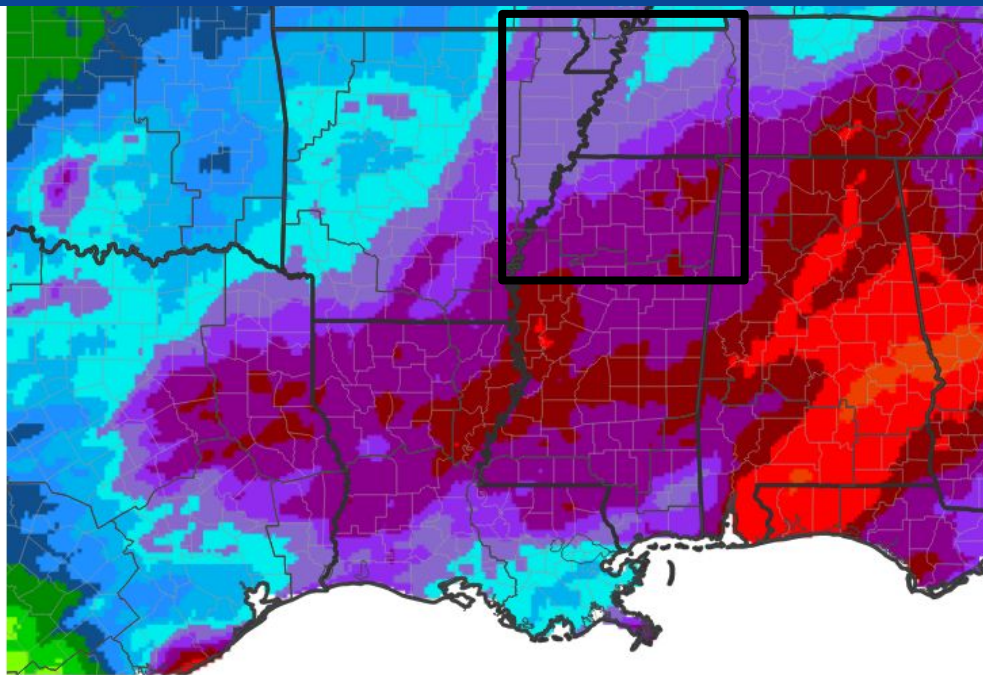
Image Caption: [Significant Wildland Fire Potential Monthly Outlook](#) for March 2024.





Seven Day Precipitation Forecast

- Forecast precipitation over the next week ranges from 1.00-3.00" across the Mid-South with locally higher amounts possible.
- A few systems will move across the area over the next 7 days.



Predicted Inches of Precipitation

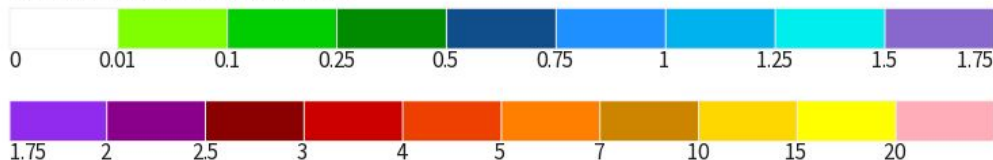


Image Caption: National Weather Service Weather Prediction Center courtesy of drought.gov
7-Day Quantitative Precipitation
Forecast Valid March 21-28, 2024





Long-Range Outlooks

The latest monthly and seasonal outlooks can be found on the [CPC homepage](#)

- The Mid-South has a 33-50% chance of experiencing above normal temperatures for the month of March.
- There are equal chances that precipitation in February will be above or below normal across north of Interstate 40. Areas south of interstate 40 have a 33-50% chance of experiencing above normal precipitation.

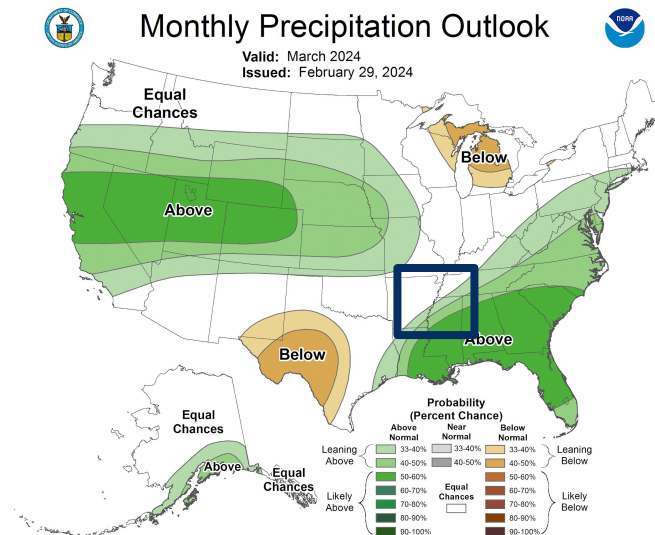
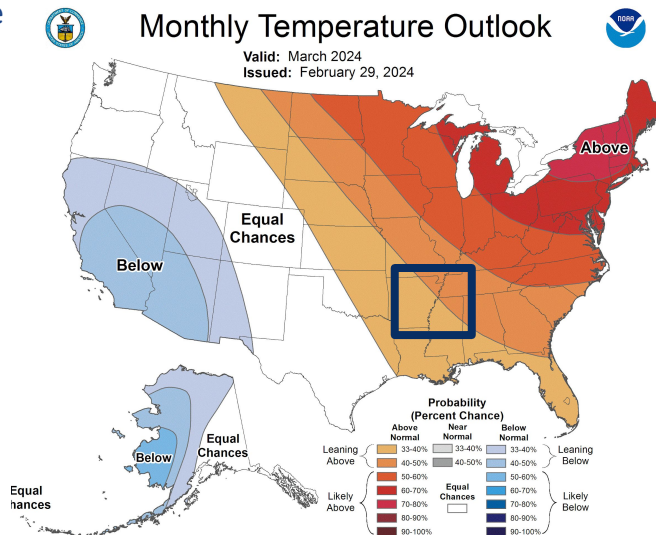


Image Captions:

Left - [Climate Prediction Center Monthly Temperature Outlook](#).

Right - [Climate Prediction Center Monthly Precipitation Outlook](#).

Valid March 2024



National Oceanic and
Atmospheric Administration

U.S. Department of Commerce

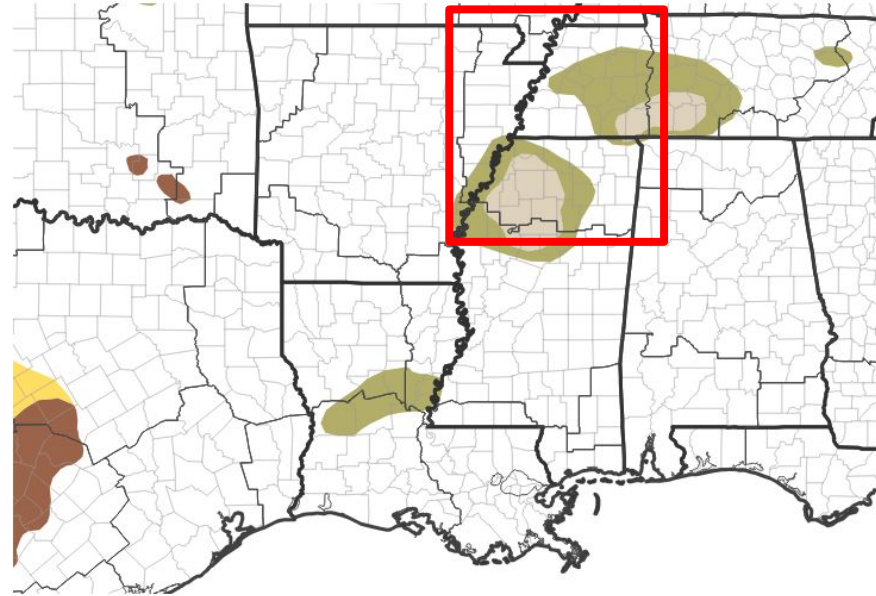
National Weather Service
Memphis, TN



Drought Outlook

The latest monthly and seasonal outlooks can be found on the [CPC homepage](#)

- Drought conditions are expected to improve for a majority or end for all of the Mid-South.



Drought Is Predicted To...



Image Caption:

Climate Prediction Center Monthly Drought Outlook Released
03/21/2024 valid for 03/2024

Links to the latest:

[Climate Prediction Center Monthly Drought Outlook](#)
[Climate Prediction Center Seasonal Drought Outlook](#)



National Oceanic and
Atmospheric Administration
U.S. Department of Commerce

National Weather Service
Memphis, TN