



# WFO Jackson Emergency Response



**Dan Byrd**  
**WFO Jackson, MS**





# Background

## IMET Program

- Provide on-site weather forecasts and briefings for national Incidents
- Specially trained to work closely with customers
- Experienced with Incident Command System
- Dispatched nationally to support USFS, FEMA, Coast Guard etc.
- Cost a lot
- Not new





# Local On-site Support



- Tailored after the IMET.
- Geared toward public safety.
- NWS Jackson can send a meteorologist to the location to support an operation.
- This service is **free** to the county or city that requests the support.



# Types of Incidents that might require On-site support

- **Significant Hazmat or Terrorist activity**
- **Wind information important for evacuations**

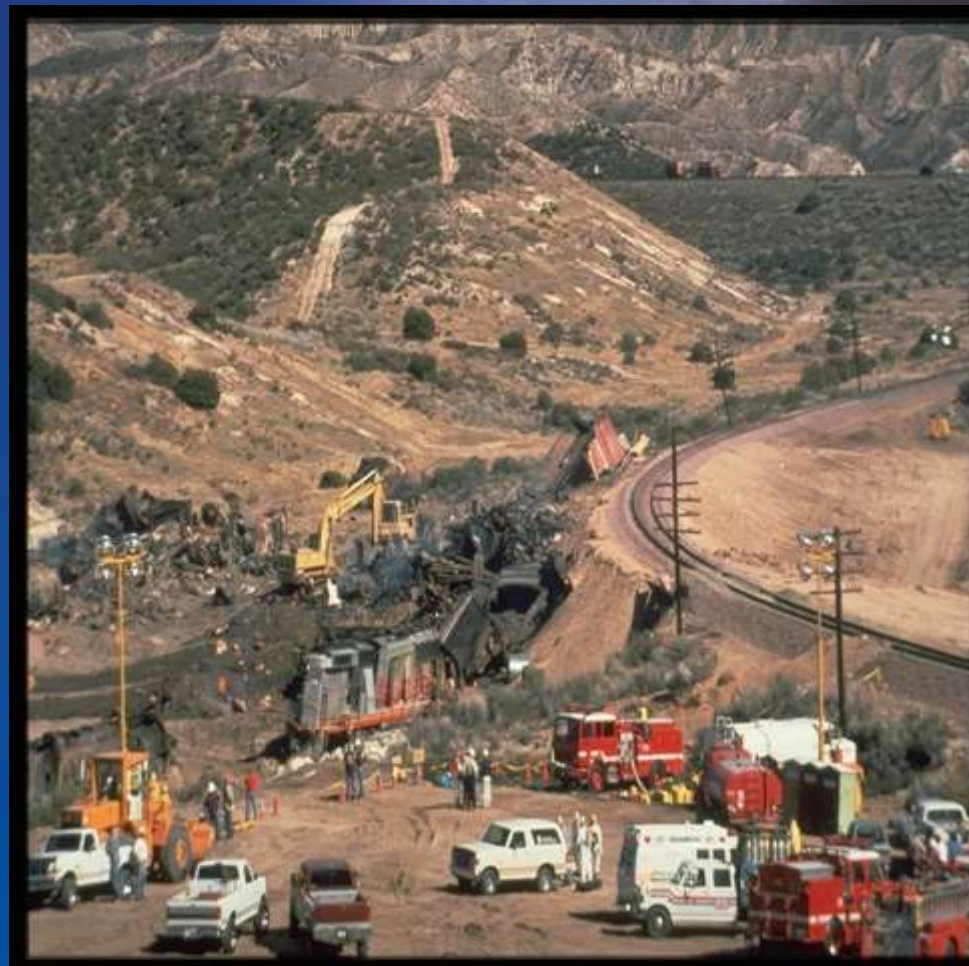


Obviously an IMET would be called for this large of a support...but an ERMET Could be used if it was smaller in scale.



# Types of Incidents that might require On-site support

- **Train Derailments**
- **May involve chemicals and evacuations**
- **Wind and rain information important**





# Types of Incidents that might require On-site support

- **Bridge Collapses**
- **Are there storms expected?**
- **River Levels**
- **Hypothermia?**





# Types of Incidents that might require On-site support – Tornado recovery



www.kansas.com  
**Sunday Eagle**  
 STORMS ■ HIGH 79 ■ LOW 67 ■ DETAILS, 60      MAY 6, 2007      FINAL EDITION ■ \$1.50

■ Detailed map of area, 11A   ■ Photo page, 4A; plus more photos at Kansas.com   ■ How to help, 8A

## DEVASTATED

Tornadoes tear through region, leveling Greensburg and leaving nine people dead



AP/WIDEWORLD PHOTOS  
**GREENSBURG:** The town is wiped out after tornadoes blow across western Kansas on Friday night, leaving a wide swath of destruction. Another line of thunderstorms Saturday spawned more tornadoes.

### Greensburg residents find a city gone, a future unknown

BY BOB WENIG, TIM POTTER, ADRIAN WINTHROP, P.J. SCHROEDER AND MORTY LORIANA  
 The Wichita Eagle

**G**REENSBURG — This area looked like Kansas: rows of houses, a grade school, a high school, a City Hall, a hospital, a water tower, a fire station, a business district or a main street.

If the people had all 1,000 of them live elsewhere today. The houses they built, the streets where they were born, where they worked together, now lie in millions of pieces, some of them as small as matchsticks. Tens of thousands of Greensburgers flow for miles across the state, some heading east and some heading west on Friday night. Their families may find the shreds of broken insulation, pieces of tin, pieces of rotted roofing, crumpled family photographs, torn documents, and bits and pieces of their lives.

The Kansas County courthouse still stands. The main square still stands. The water tower, as a highway port of respect and, "is not just dusty." "This is an eternal," city administrator Bruce Bennett said, "I don't know what to expect tomorrow. I'm worried about your needs from

Please see GREENSBURG, Page 10A



AP/WIDEWORLD PHOTOS  
**MACRSVILLE:** Joyce Stafford hugs Jarrod Black after surviving a tornado 7 miles south of Macrsville. Black and his parents, Ed and Debbie Parks, barely made it to their basement before the tornado hit.

### Survivors tell of narrow escapes, unlikely discoveries

BY TIM POTTER  
 The Wichita Eagle

**GREENSBURG** — As the rain sun was Saturday, the fog hid it, revealing the severity of the disaster damage.

Scott, who had been a construction worker on U.S. 54, a moving van for on the side, pulling out a household of possessions — a dining room set and gold chain lay in a heap.

Inside the general convenience store, 46-year-old Brad Bussard had slept a few hours by his pickup truck with his car in the parking lot.

He recalled what happened the night before. He was heading east on U.S. 54 on his way to work with his possessions packed under the pickup truck.

Suddenly, the world blew hard and fell. Bussard hit his windshield. A sign and 1 mile to Greensburg.

Please see SURVIVORS, Page 6A

**INSIDE: MAPS, PHOTOS, STORIES OF SURVIVAL**

- Area is mangled by tornadoes a second night
- Workers repairing lost sets and owners
- Legislators Peips die neighbors out of rubble
- Details of the storm's toll
- Amid misery, residents vow life will go on

**.com PHOTO GALLERIES AND VIDEO AT KANSAS.COM**

**SUBSCRIBE TODAY**  
 268-6344

Auto & Home	18	Local & State	18
Business	18	News	18
Child & Family	18	Opinion	118-119
Classified	17	Sports	18
Classroom	254	Television	17
Help wanted	18	Travel	118

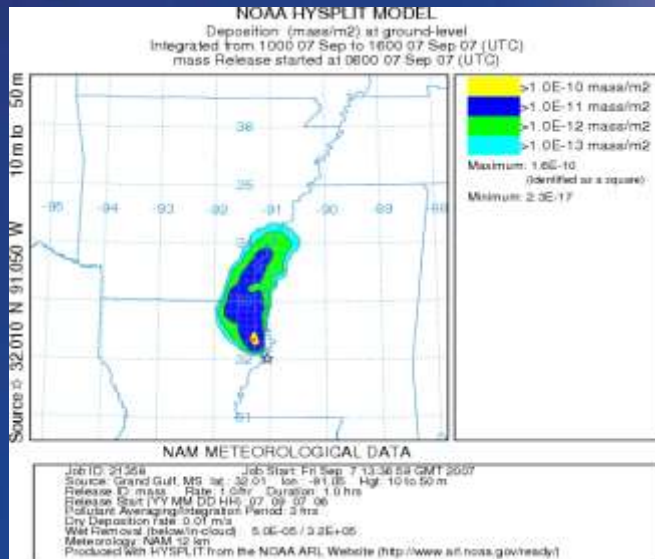
**COMPLETE COVERAGE OF THE KENTUCKY DERBY, IN SPORTS**





# Types of Incidents that might require On-site support

- Nuclear power plant meltdowns
- Can provide deposition and concentration
- Rain and wind will affect impact



Three Mile Island







# Started with:



**Can work out of our vehicle with an inverter...a chair and table.**

**Wouldn't be conducive for longer events... unless we Stay at a hotel.**

**Although being an IMET...this is where I usually sleep.**





# Started with:

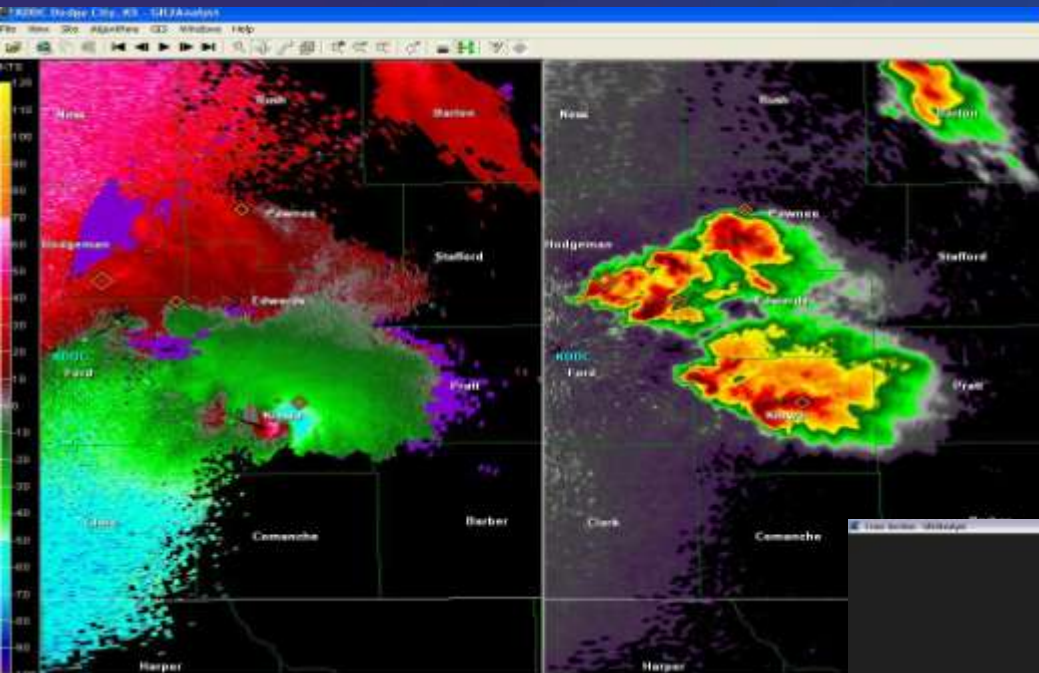


- Dedicated laptop with Wireless Internet capability
- Printer
- Dedicated cell phone
- Software including FXnet, GR2Analyst, Cameo, Hysplit and IEM Chat.
- Observing equipment (MK III Sensor Assembly). Data can be displayed on the laptop up to 400 feet away.
- Generator will be available.





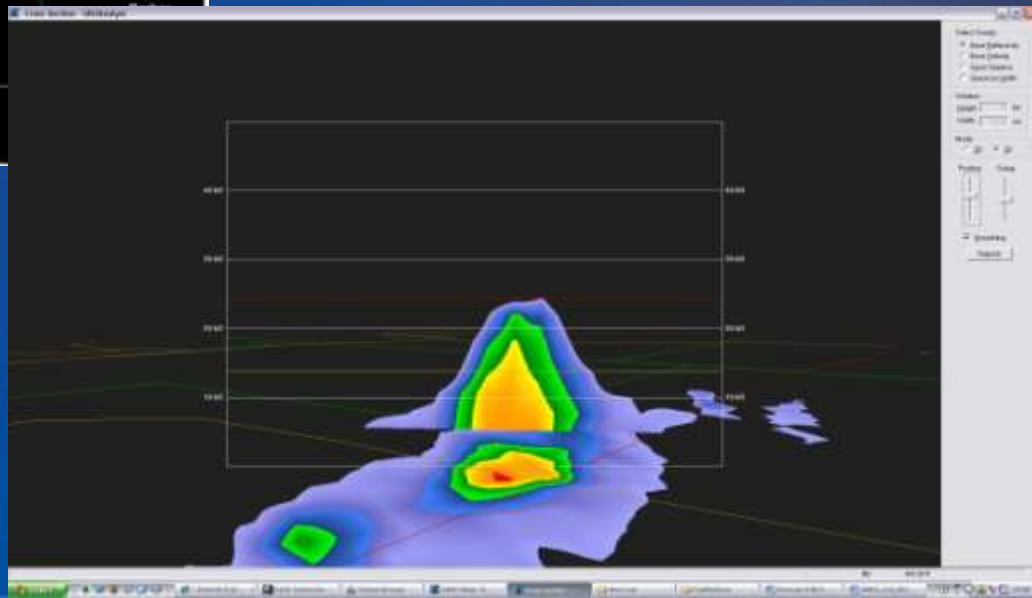
# GR2Analyst Software



Smoke Plume in Montana



Greensburg Tornado





# FX-Net Software



Earth System Research Laboratory: FX-Net 5.0

File View Options Volume Obs NCEP/Hydro Upper Air Satellite Radar Maps Help

Southeast Regional Clear Reload Fr: 1 Mag: 1.0 Desc: 1.0

12:00 PM 12:00 PM 12:00 PM 12:00 PM 12:00 PM 12:00 PM

GFS-M 700mb height Thu 12:00Z  
GFS-M 500mb height Thu 12:00Z  
GFS-M 250mb height Thu 12:00Z  
GFS-M 100mb height Thu 12:00Z  
GFS-M 500mb height Thu 12:00Z  
GFS-M 500mb height Thu 12:00Z

East Vis Sat Thu 18:15Z 17-Jan-08

Status: Text Refresh Off 18:49:21 GMT



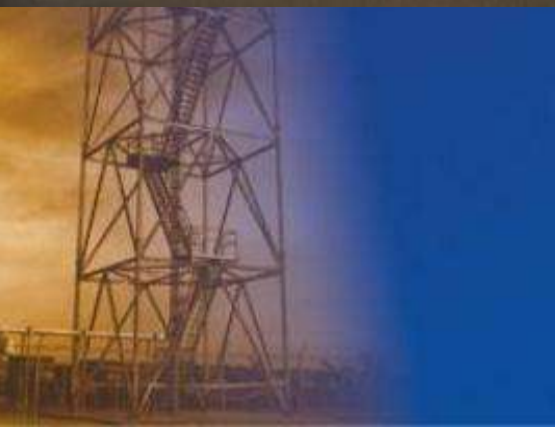
# Observing Equipment

## MK III Sensor Assembly





# Upgraded in late 2008 with WFO Jackson Emergency Response Trailer...





# Emergency Response Trailer

- **Used for exercises and shorter duration events.**
- **Can be used as a staging point for tornado surveys.**
- **Added a Wireless card to give us internet capability (Need cell coverage)**
- **Heated and Cooled...Somewhat!**
- **Dedicated Generator**



# Newest Addition

New and improved ERMet trailer







# Upgrade!!!



- **27 feet with AC/Heat/Hot water.**
- **Takes some training to learn to pull it and set it up.**
- **We have 2 vehicles that are capable of towing the trailer.**
- **Does require upkeep and annual maintenance.**
- **Used at Sturgis.**



# Newest Addition

New and improved ERMet trailer



Workspace

Sleeping

Kitchen

Shower



# Additional Uses

**New and improved ERMet trailer**



- **After significant weather events (Think Katrina or an ice storm)**
  - Shower facilities
  - Kitchen
  - Sleeps up to 4 or so.





**Backup if needed**

# Newton County



## Mobile Emergency Communication Operations (MECO)





# MECO Uses



- For extended events
- Will have the ability to have communications (voice and internet via satellite) anywhere in our County Warning Area...**This is an advantage over us... although we do have a BGAN.**
- Will be available on location 24/7
- Comes with sleeping, shower facilities
- We have an agreement with the Newton County EM for the use of this (when available)



# On-site support in which NWS Jackson has participated



- **Madison County/Nissan plant tornado exercise. (2008)**
- **Jones county tornado/hazardous material exercise (2009)**
- **Yazoo county Fair (2009)**
- **Viking classic Golf Tournament (2009)**
- **Youth baseball tournament in Jones county (2009)**
- **Brandon Days (2008-2009)**



# On-site support in which NWS Jackson has participated

- **3 Terrorist/Hazmat exercises (2008-2009)**
- **Grand Gulf Nuclear Power Plant exercise 2008**
- **Hurricane Zora and Wendy exercise (2008-2009)**
- **3 years running...Sturgis Motorcycle Rally – provided on-site support for large gathering of people (2007-2009)**
- **1 Day Support for Hattiesburg Train Accident (2008)**
- **Naval Meridian air show in (March 2008)**
- **Tabletop exercises.**



# Madison County Exercise

## Nov 08



**F3 Tornado hitting Nissan plant**







# Jones County Exercise

## Aug 09



**Tornado/Hazmet/  
Terrorist Exercise.**

**Issued Exercise  
Tornado warnings  
For event.**

**Real-time severe  
Weather was also  
Ongoing.**





# Continuing Challenges

- **Getting the word out**
  - One on one with the EM.
  - LEPC talks
  - EM Workshops
  - MEMA Conference
  - Starting to get requests for support
- **EM doesn't think to ask for support**
  - Currently have procedures in place on what to do if there is a HAZMET incident.
  - Provide initial support, then refer incident calls to either the WCM or myself.





# Known Upcoming activities



- Possible participation in Rankin County exercise...Late this month.
- Hubfest (Hattiesburg late March)
- Boy Scout campout for approx 4000 scouts in Late Apr.
- Brandon Day Festival...Early May
- May – Statewide hurricane exercise (MEMA)
- Sturgis 2010 Approx 40,000...Aug
- September– Grand Gulf Nuclear power plant exercise.
- Viking classic Golf Tournament...Oct
- Yazoo/Jones county fairs...Oct
- Mississippi State Fair...Oct



# Some additional DSP activities



- **Weekly EM briefings (Monday)**
- **Camtasia briefings weekly and as needed**
- **Continuous weather briefings during high end severe events and winter events.**
- **Support to the EM's for College football events: Mississippi State, Jackson State Southern Miss etc.**
- **In planning stages to run a WFO/EM exercise in the late spring.**



# Questions?

[Dan.byrd@noaa.gov](mailto:Dan.byrd@noaa.gov)