



Drought Information Statement for South Florida

04 23 2026

Issued By: NWS Miami-South Florida

Contact Information: sr-mfl.webmaster@noaa.gov

- Ongoing Extreme to Severe Drought Across South Florida
- Please see all available products at <https://drought.gov/drought-information-statements>.
- Visit our local interactive drought page at <https://nws-miami-drought-page-noaa.hub.arcgis.com/>

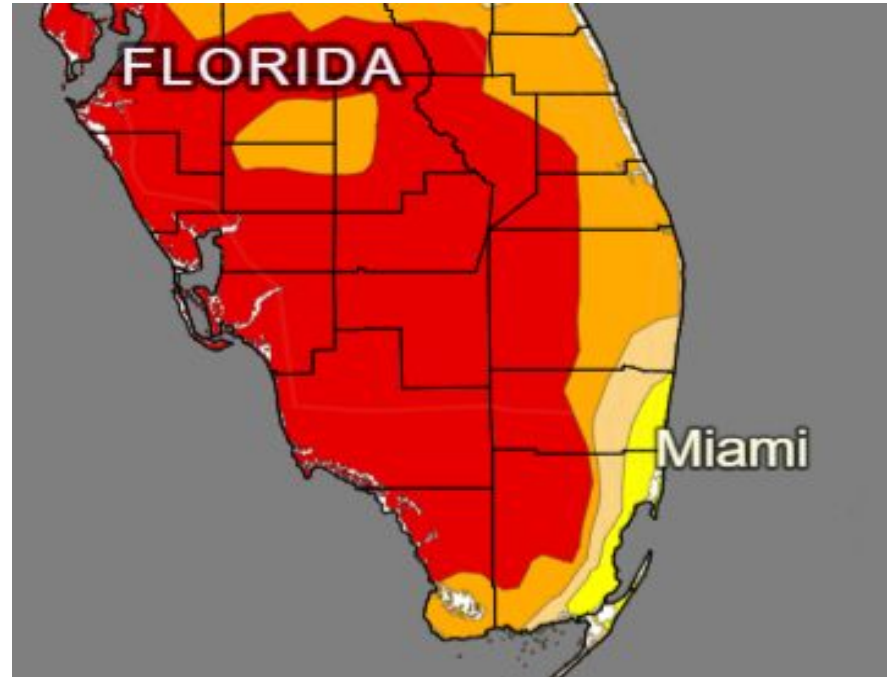




U.S. Drought Monitor

Link to the [latest U.S. Drought Monitor](#) for South Florida

- Drought conditions improved over portions of Palm Beach County.
- Drought intensity and Extent
 - **D0 (Abnormally Dry):** Coastal Broward/Coastal Miami-Dade.
 - **D1 (Moderate Drought):** Metro areas of Miami-Dade/Broward Counties, and SE Palm Beach County.
 - **D2 (Severe Drought):** Interior metro Broward/Miami-Dade Counties, eastern parts of Palm Beach County, and southern Everglades.
 - **D3 (Extreme Drought):** Rest of South Florida.



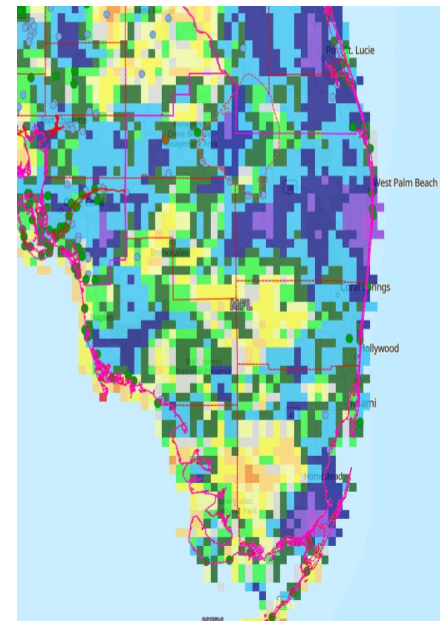
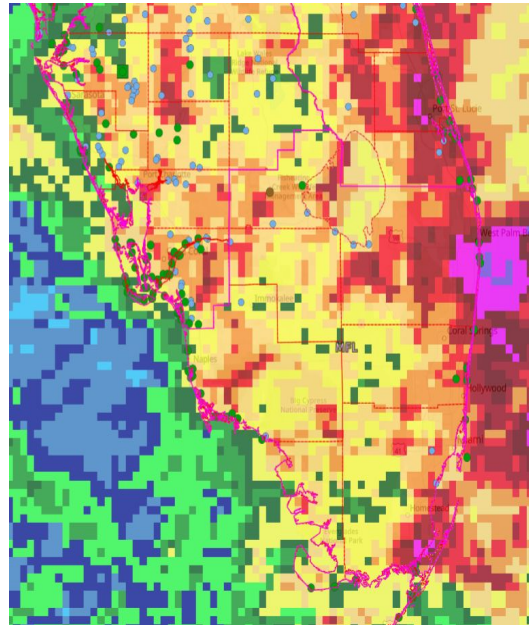
U.S. Drought Monitor valid 7AM EDT April 23th 2026.





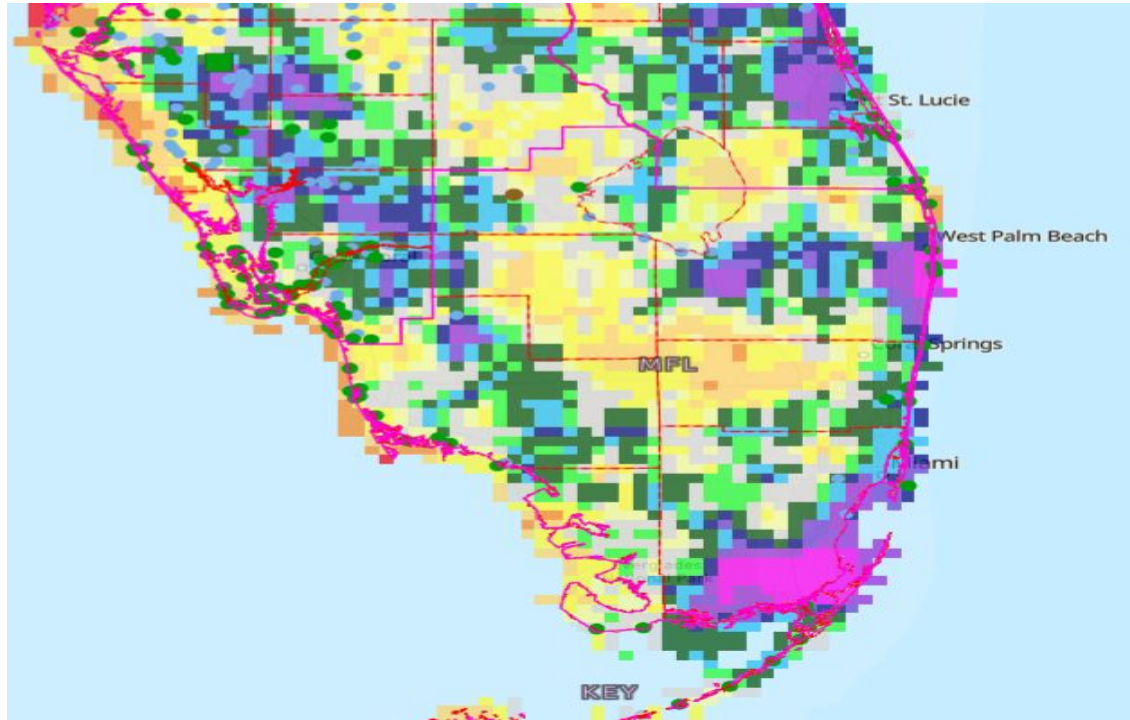
30 Day Precipitation & Percent of Normal (Since 3/24/25)

- Rainfall has been normal to above normal over the area in most places.





90 Day Rainfall Departure (Since 01/23/2026)





180 Day Precipitation & Percent of Normal (Since 10/25/25)

- Rainfall observed with the departure and percent of normal since November 1st, 2025

The following table gives the rainfall from November 1, 2025 to April 22th, 2026:

Airports:	Observed Rainfall	Dep fm Normal	Percent of Normal
Palm Beach Intl	16.37	-2.86	85%
Naples Municipal	6.74	-2.74	71%
Ft Lauderdale-Hollywood Intl	15.73	-0.54	97%
Miami Intl	11.12	-3.66	75%
Secondary Observation Sites			
Moore Haven (Glades)	7.38	-4.26	63%
Opa Locka (Miami-Dade)	8.88	-5.19	63%
Homestead (Miami-Dade)	10.40	-1.76	86%
Hialeah (Miami-Dade)	13.36	-3.27	80%
Palm Beach Gardens (Palm Beach)	10.40	-9.25	53%
North Miami Beach (Miami-Dade)	10.23	-7.18	59%
Devils Garden (Hendry)	6.93	-5.16	57%

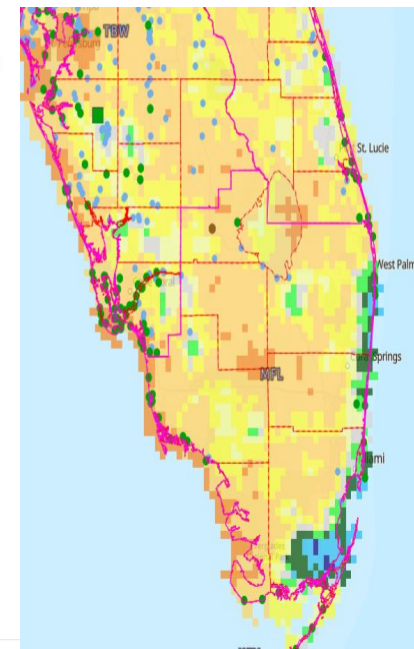
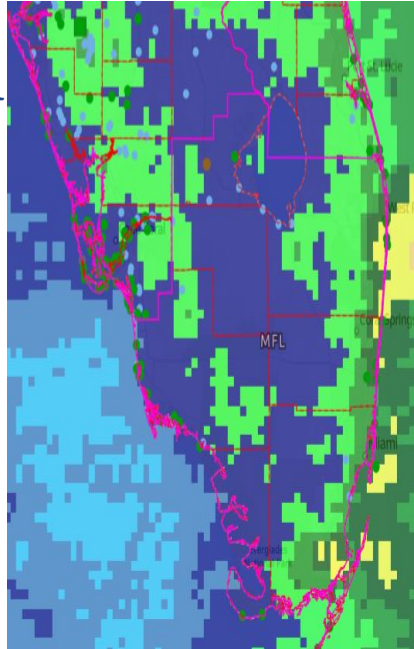


Image Captions:
 Left - Precipitation Amount for [area]
 Right - Percent of Normal Precipitation for [area]
 Data Courtesy National Water Prediction Service.
 Data over the past 180 days ending April 22th, 2026





Hydrologic Impacts

Links: See/submit [Condition Monitoring Observer Reports \(CMOR\)](#) and view the [Drought Impacts Reporter](#)

Hydrologic Impacts

- (4/23/26) Lake Okeechobee water level is currently at 11.87 feet which is **-1.94 feet** below normal of 13.81 feet.
- The underground level water conservation area 1 in Interior Palm Beach County is at 16.37 feet and it should be at 15.96 feet which is **+0.41 feet** above normal for this time of year.
- The Underground level water conservation area 2 in Interior Broward County is at 11.96 feet and its normal level is 11.00 feet which is **+0.96 feet** above normal for this time of year.
- The underground level water conservation area 3 in Interior Miami-Dade County is at 8.12 feet and its normal level is at 9.76 feet which is **-1.64 feet** below normal for this time of year.
- **The South Florida Water Management District (SFWMD) continues a Water Shortage Warning for Collier county amid continuing dry conditions and increasing water supply concerns.**





Hydrologic Impacts on Lake Okeechobee

Links: See/submit [Condition Monitoring Observer Reports \(CMOR\)](#) and view the [Drought Impacts Reporter](#)

Hydrologic Impacts

- Locks that are closed due to low lake Okeechobee water levels
 - S-135 Boat Lock J&S Fish Camp in Martin County
 - G-36 Boat Lock on Hendry Creek in Okeechobee County
 - S-127 Boat Lock at Buckheat Ridge in Glades County
 - S-131 Boat Lock in Lakeport in Glades County
- S-193 Boat Lock at Taylor Creek in Okeechobee County will remain open only on Saturdays and Sundays during day hours. If lake level reaches 11 FT NGVD or 9.70 FT NAVD, then lock will also close.



Courtesy of SFWMD





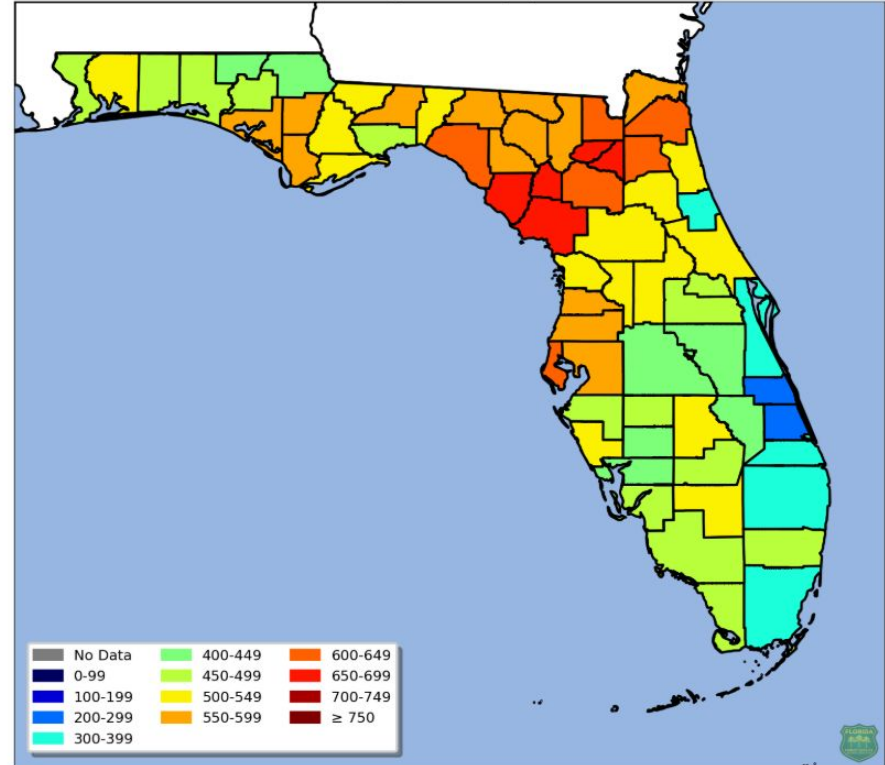
Fire Hazard Impacts

[Keetch-Byram Drought Index \(KBDI\)](#)

Fire Hazard Impacts

- Dry conditions expected to continue over South Florida.
- Hendry County now at 500-550.
- Glades/Broward/Collier and Mainland Monroe Counties now at 450-500.
- Palm Beach and Broward Counties still at 300-400.

KBDI Averages by County | Wed 04/22/26



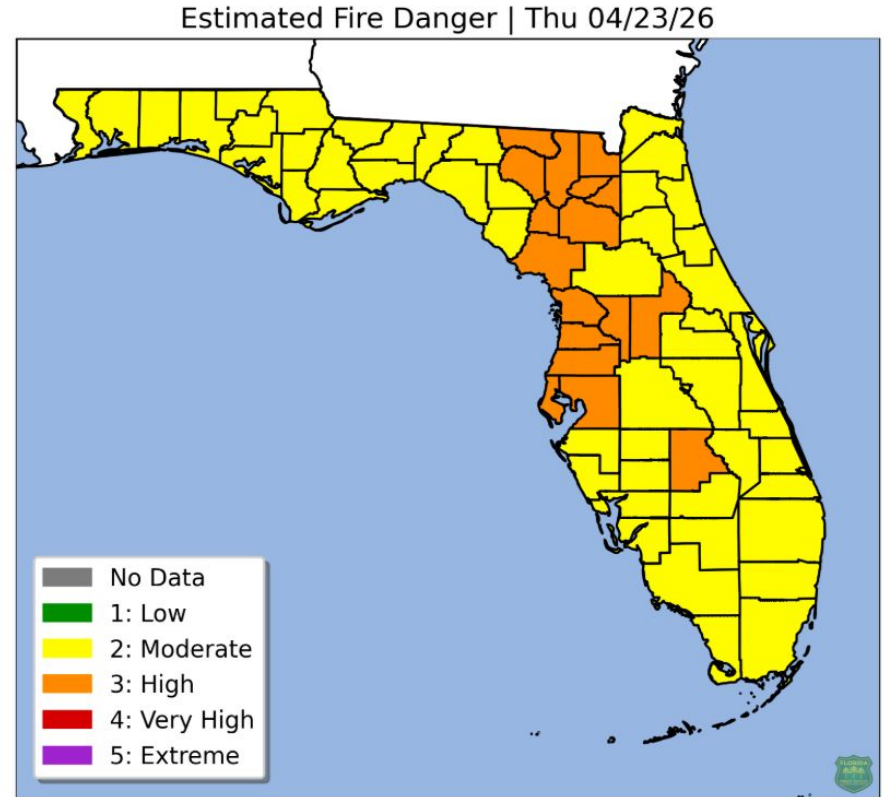


Fire Danger Matrix

[Fire Danger Risk](#)

Fire Danger Matrix

- A moderate fire (level 2 of 5) danger risk across all of South Florida as of 4/23/2026.



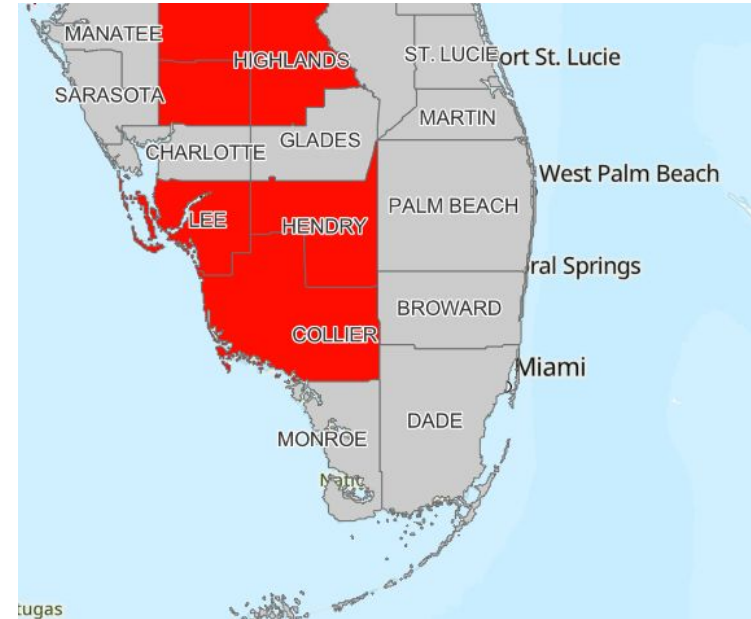


Burn Bans

Link: [County Burn Bans](#)

Current Burn Bans

- Collier, and Hendry Counties.
- *Issued by local county officials.*



Burn Bans*

-  Burn Ban
-  No Burn Ban
-  Yard Debris Burn Always Prohibited



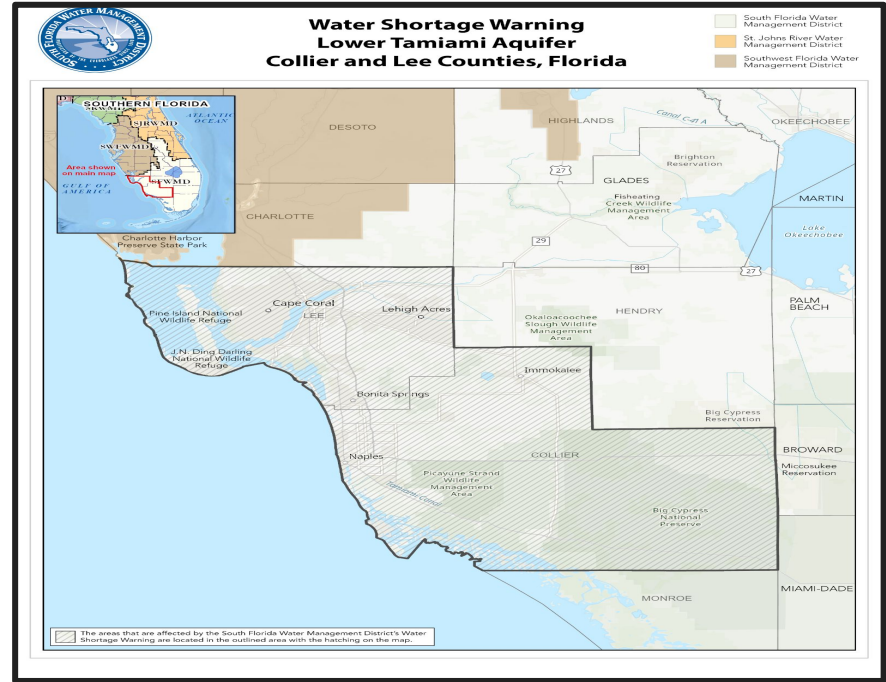


Water Shortage Warnings

Link: [South Florida Water Management District Water Shortage Page](#)

Water Shortage Warnings

- Collier County
- Issued by the South Florida Water Management District.





Soil Moisture

- Soil moisture did not change at all this week.
- The western areas are still in the 20 to 30 percentile range, while the eastern areas are near normal conditions.

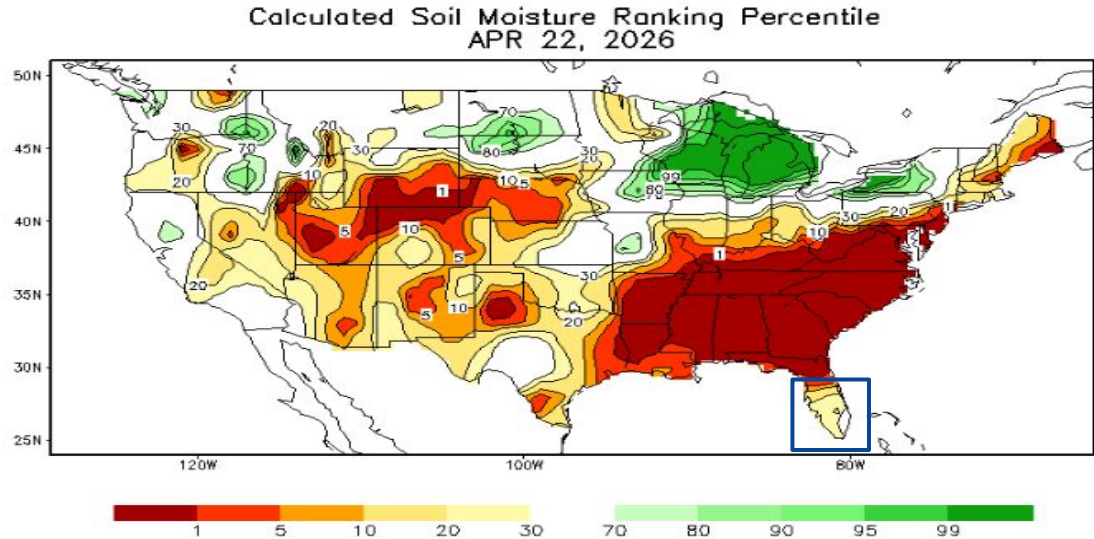


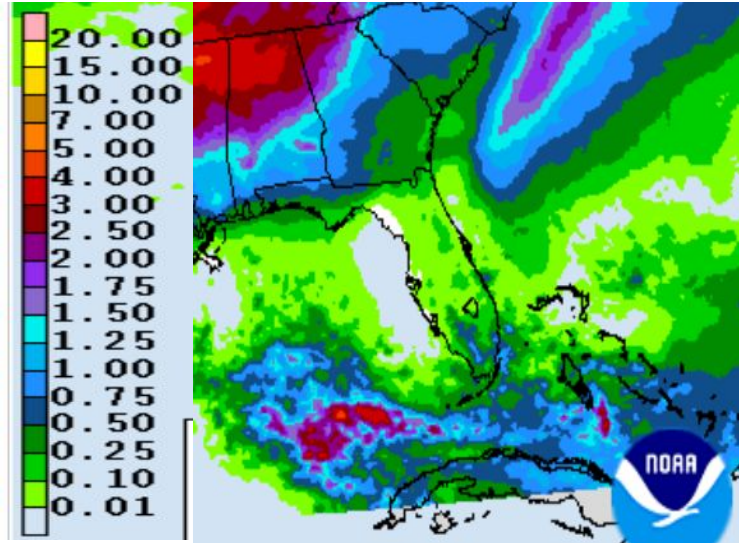
Image Captions:
CPC Calculated [Soil Moisture Ranking Percentile](#)
valid April 22th, 2026



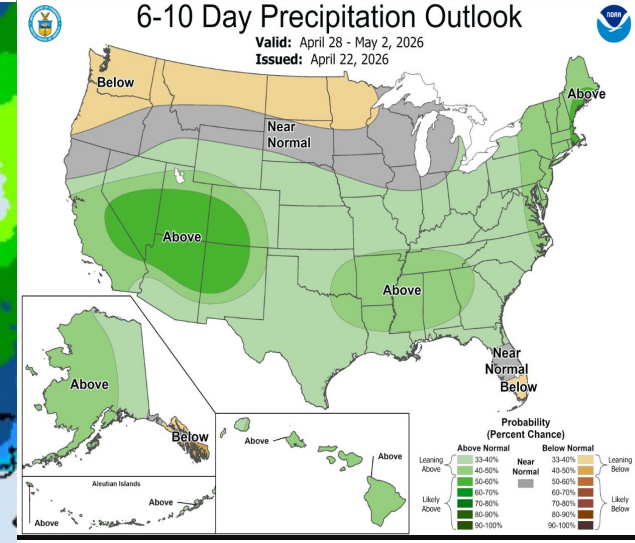


Precipitation Outlook

- Some showers could affect South Florida today into Friday with an upper level disturbance, but overall the weather will remain dry next 7 days.
- Rainfall amounts will be mainly less than .050 inches but a few location could see around 1 inch. These rainfall amounts are around normal for this time of year.
- CPC's is highlighting a 33-40% chance of below normal rainfall over South Florida from April 28th through May 2, 2026.



168 Hour Day 1-7 Rainfall Accumulations -
Weather Prediction Center
(Through 8am April 30th, 2026)



6-10 Day Precipitation Outlook
Climate Prediction Center
Valid from April 28th-May 2,
2026





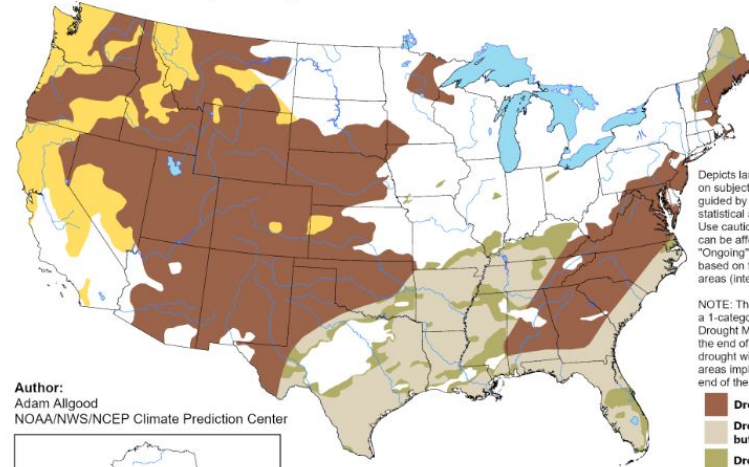
Drought Outlook

The latest monthly and seasonal outlooks can be found on the [CPC homepage](#)

- Drought is expected to persist through July of 2026 over interior and west coast metro areas, but should start to improve once the rainy season gets started in May.
- The east coast metro areas should be out of drought conditions by end of July 2026 with the rainy season getting start in May.

U.S. Seasonal Drought Outlook Drought Tendency During the Valid Period

Valid for April 16 - July 31, 2026
Released April 16, 2026

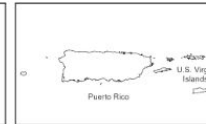
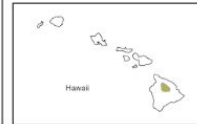


Depicts large-scale trends based on subjectively derived probabilities guided by short- and long-range statistical and dynamical forecasts. Use caution for applications that can be affected by short lived events. "Ongoing" drought areas are based on the U.S. Drought Monitor areas (intensities of D1 to D4).

NOTE: The tan areas imply at least a 1-category improvement in the Drought Monitor intensity levels by the end of the period, although drought will remain. The green areas imply drought removal by the end of the period (D0 or none).

- Drought persists
- Drought remains, but improves
- Drought removal likely
- Drought development likely
- No drought

Author:
Adam Allgood
NOAA/NWS/NCEP Climate Prediction Center



<https://go.usa.gov/3eZ73>

Links to the latest:

- [Climate Prediction Center Monthly Drought Outlook](#)
- [Climate Prediction Center Seasonal Drought Outlook](#)

