



Drought Information Statement for South Florida

5 28 2026

Issued By: NWS Miami-South Florida

Contact Information: nws.miami@noaa.gov

- Drought Conditions Remain Present Across The Region
- Please see all available products at <https://drought.gov/drought-information-statements>.
- Visit our local interactive drought page at <https://nws-miami-drought-page-noaa.hub.arcgis.com/>

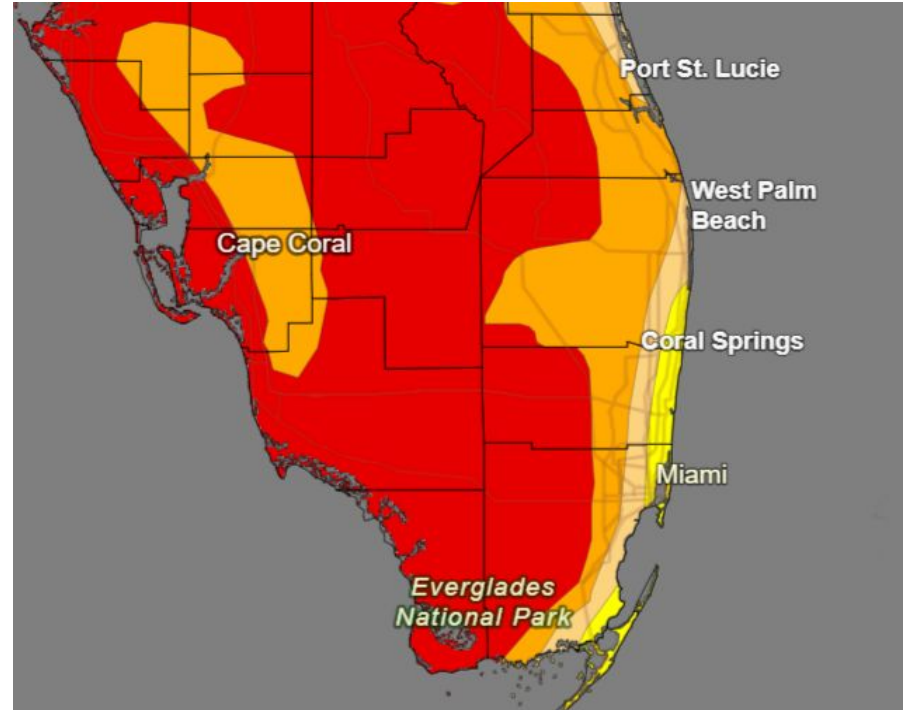




U.S. Drought Monitor

Link to the [latest U.S. Drought Monitor](#) for South Florida

- Drought conditions remain mainly unchanged this week.
- Drought intensity and Extent
 - **D0 (Abnormally Dry):** Coastal Broward, SE Palm Beach, & NE Miami-Dade Counties.
 - **D1 (Moderate Drought):** Eastern metro areas of Miami-Dade, Broward, & Palm Beach.
 - **D2 (Severe Drought):** Western metro areas of Miami-Dade, Broward, & Palm Beach.
 - **D3 (Extreme Drought):** Rest of South Florida.



U.S. Drought Monitor valid 8AM EDT May 28th 2026.

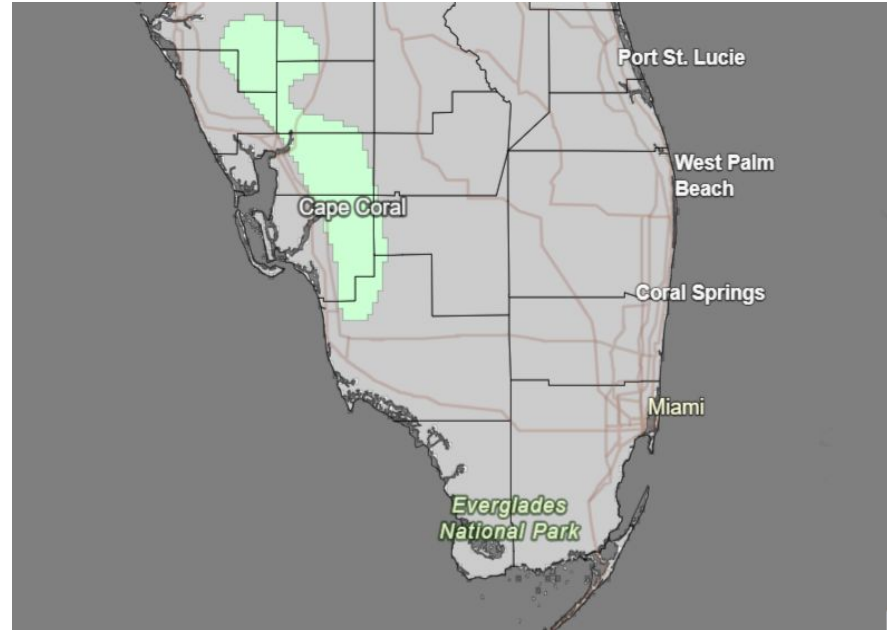




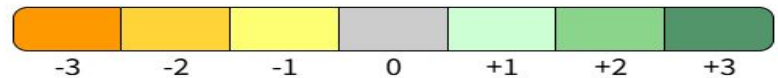
Recent Change in Drought Intensity

Link to the latest [4-week change map](#) for South Florida

- **One Week Drought Monitor Class Change**
 - No changes in drought conditions except for extreme NW Collier County where it was one category improvement.



Drought Change Since Last Week



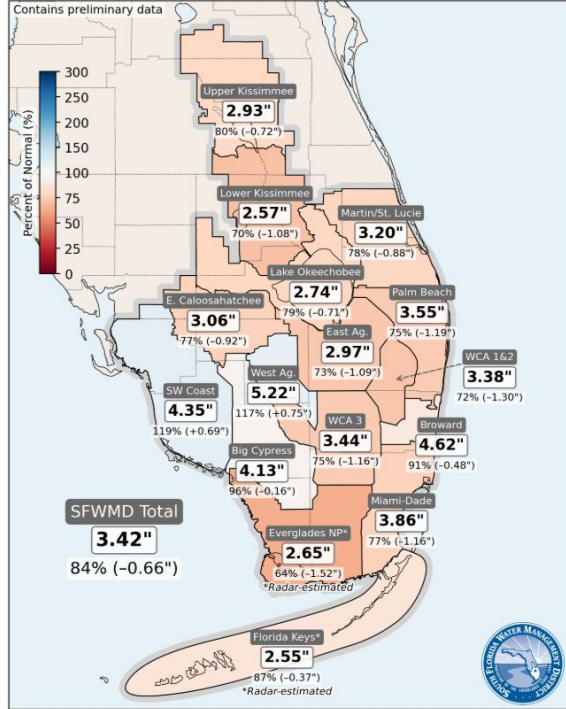


Rainfall Totals, Percent of Normal and Departures (Since 02/27/2026)

Past 30 Days

Rainfall, Percent of Normal, and Departures

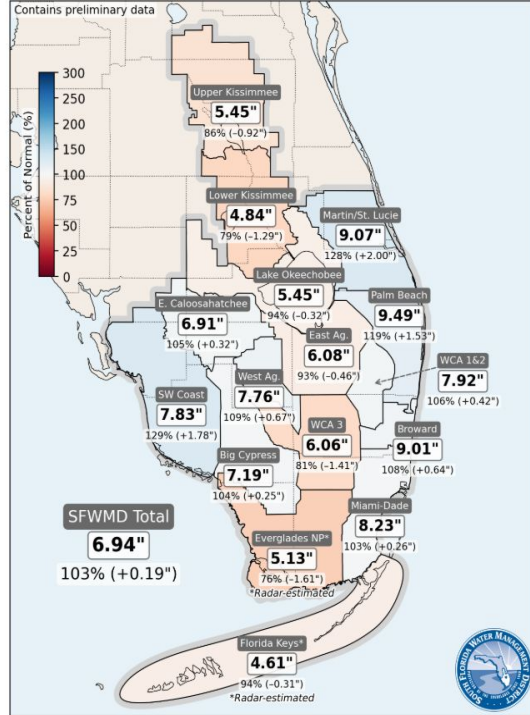
SFWMDDaily Rainfall Report
4/28/2026 to 5/27/2026



Past 60 Days

Rainfall, Percent of Normal, and Departures

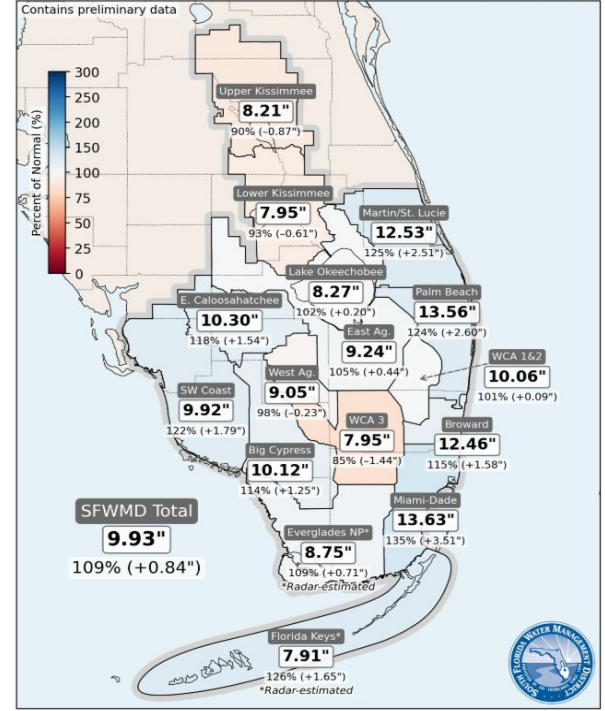
SFWMDDaily Rainfall Report
3/29/2026 to 5/27/2026



Past 90 Days

Rainfall, Percent of Normal, and Departures

SFWMDDaily Rainfall Report
2/27/2026 to 5/27/2026





180 Day Precipitation & Percent of Normal (Since 11/29/25)

- Rainfall observed with the departure and percent of normal since November 1st, 2025

The following table gives the rainfall from November 1, 2025 to May 20th, 2026:

Airports:	Observed Rainfall	Dep fm Normal	Percent of Normal
Palm Beach Intl	19.23	-4.94	80%
Naples Municipal	14.24	+1.82	115%
Ft Lauderdale-Hollywood Intl	18.31	-3.13	84%
Miami Intl	15.89	-5.04	76%

Secondary Observation Sites	Observed Rainfall	Dep fm Normal	Percent of Normal
Moore Haven (Glades)	8.76	-6.54	57%
Opa Locka (Miami-Dade)	15.56	-4.43	78%
Homestead (Miami-Dade)	13.08	-4.53	74%
Hialeah (Miami-Dade)	18.12	-4.55	80%
Palm Beach Gardens (Palm Beach)	13.23	-12.50	51%
North Miami Beach (Miami-Dade)	13.98	-9.19	60%
Devils Garden (Hendry)	13.12	-3.63	78%

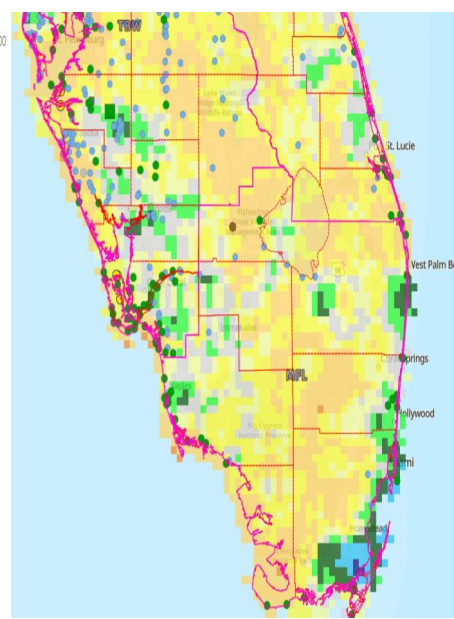
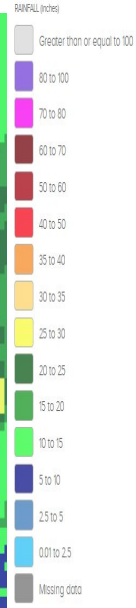
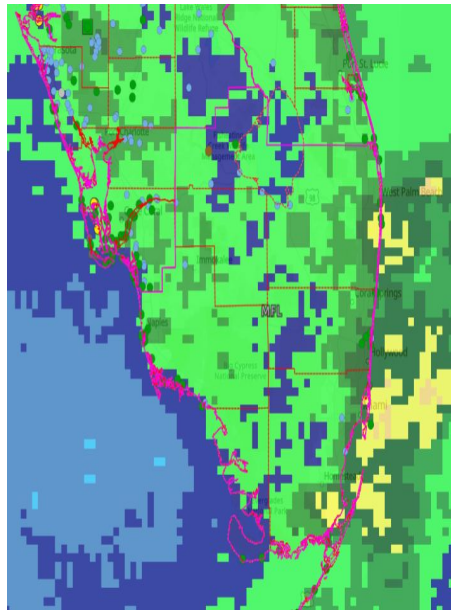


Image Captions:
 Left - Precipitation Amount for [area]
 Right - Percent of Normal Precipitation for [area]
 Data Courtesy National Water Prediction Service.
 Data over the past 180 days ending May 27th, 2026



Hydrologic Impacts

Links: See/submit [Condition Monitoring Observer Reports \(CMOR\)](#) and view the [Drought Impacts Reporter](#)

Hydrologic Impacts

- (5/28/26) Lake Okeechobee water level is currently at 11.17 feet which is **-1.97 feet** below normal of 13.14 feet.
- The underground level for **Water Conservation Area 1** in Interior Palm Beach County is at 16.13 feet. Compared to the normal value of 15.75 feet, this is **+0.38 feet** above normal for this time of year.
- The underground level for **Water Conservation Area 2** in Interior Broward County is at 11.71 feet. Compared to the normal value of 11.00 feet, this is **+0.71 feet** above normal for this time of year.
- The underground level for **Water Conservation Area 3** in Interior Miami-Dade County is at 7.70 feet. Compared to the normal value of 9.53 feet, this is **-1.83 feet** below normal for this time of year.
- **The South Florida Water Management District (SFWMD) continues a Water Shortage Warning for Collier county amid continuing dry conditions and increasing water supply concerns.**





Hydrologic Impacts on Lake Okeechobee

Links: See/submit [Condition Monitoring Observer Reports \(CMOR\)](#) and view the [Drought Impacts Reporter](#)

Hydrologic Impacts

- Locks that are closed due to low Lake Okeechobee water levels include:
 - S-135 Boat Lock J&S Fish Camp in Martin County
 - G-36 Boat Lock on Hendry Creek in Okeechobee County
 - S-127 Boat Lock at Buckheat Ridge in Glades County
 - S-131 Boat Lock in Lakeport in Glades County
- S-193 Boat Lock at Taylor Creek in Okeechobee County will remain open only on Saturdays and Sundays during day hours. If the lake level reaches 11 FT NGVD or 9.70 FT NAVD, then the lock will also be closed.



Courtesy of SFWMD





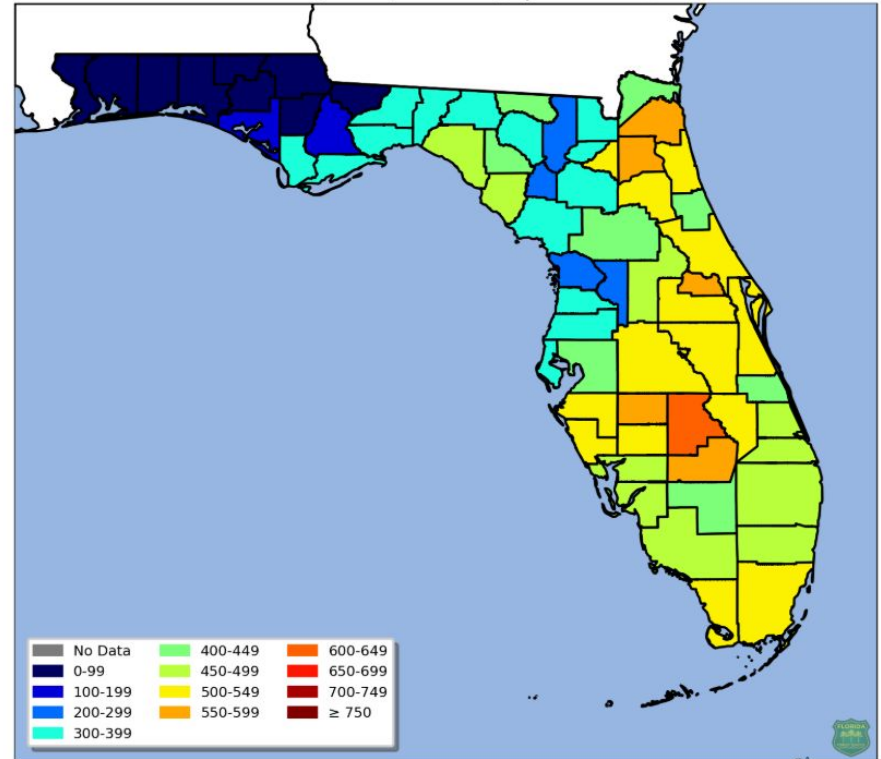
Fire Hazard Impacts

[Keetch-Byram Drought Index \(KBDI\)](#)

Fire Hazard Impacts

- South Florida should slowly improved in the dry conditions as the rainy season continues.
- KBDI values of 400 to 550 over most of South Florida except in Glades County where it is 550 to 600.

KBDI Averages by County | Wed 05/27/26





Fire Danger Matrix

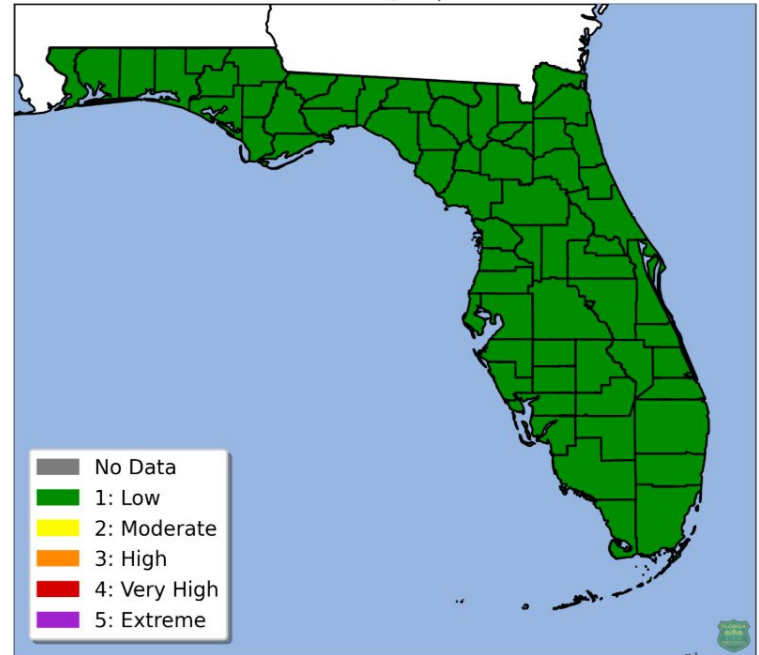
[Fire Danger Risk](#)

Fire Danger Matrix

- A **low fire** (level 1 of 5) danger risk across all of South Florida as of 5/28/2026.

Fire Danger Maps
and Fire Danger Index (FDI) Report

Estimated Fire Danger | Thu 05/28/26



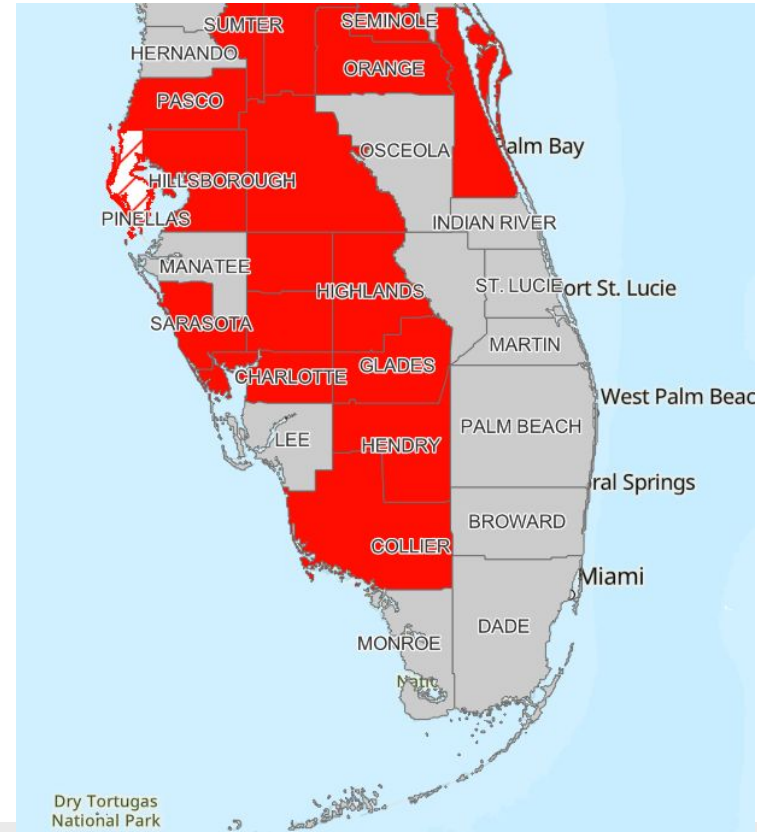


Burn Bans

Link: [County Burn Bans](#)

Current Burn Bans

- Glades, Hendry, and Collier Counties.
- *Issued by local county officials.*



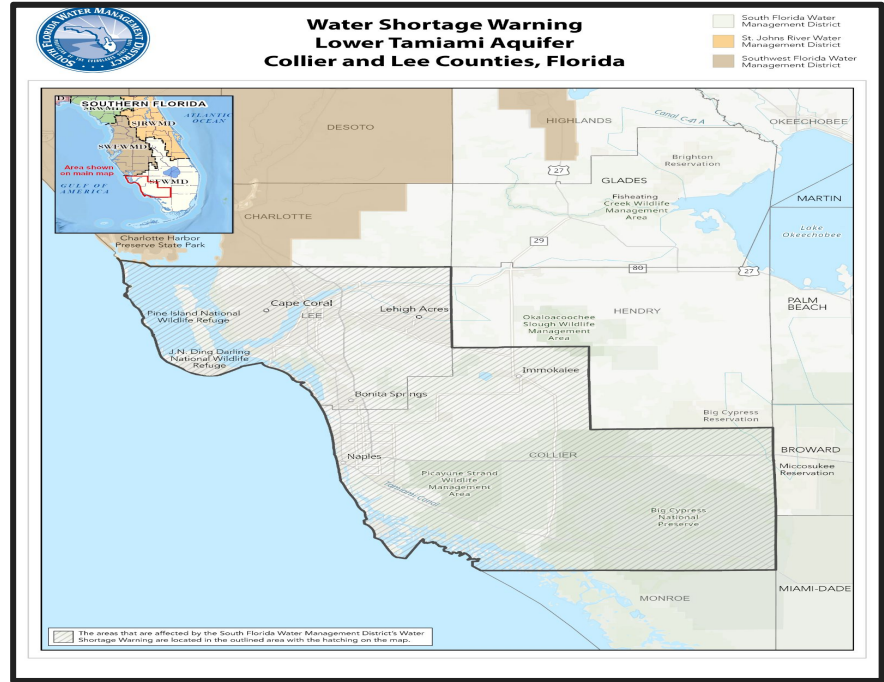


Water Shortage Warnings

Link: [South Florida Water Management District Water Shortage Page](#)

Water Shortage Warnings

- Collier County
- Issued by the South Florida Water Management District.





Soil Moisture

- Soil moisture has improved over Glades and Western Hendry Counties.
- South Florida is in the 30 to 70 percentile range.

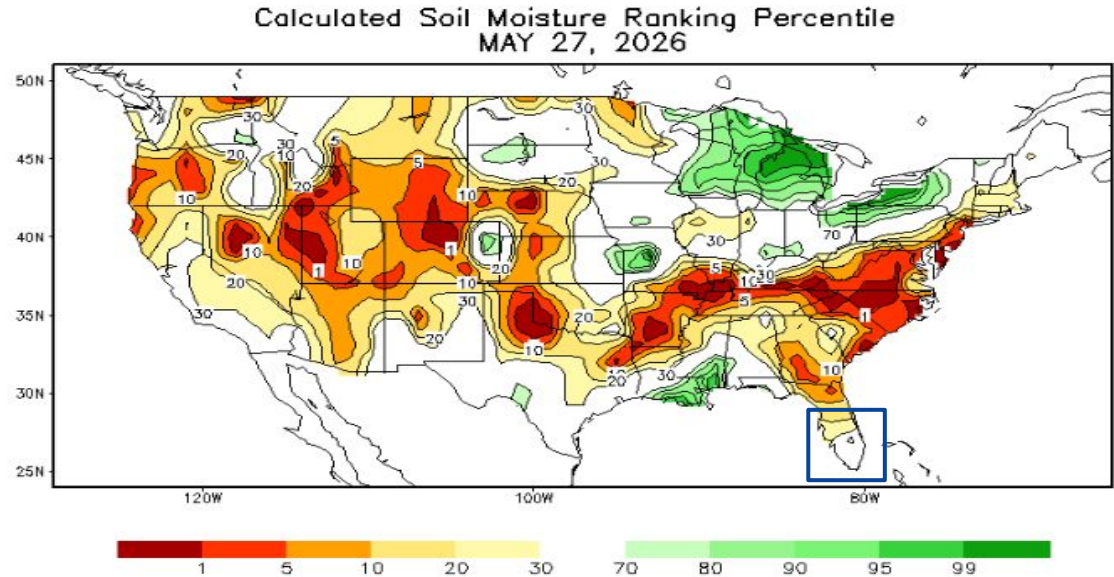


Image Captions:
CPC Calculated [Soil Moisture Ranking Percentile](#)
valid May 27th, 2026





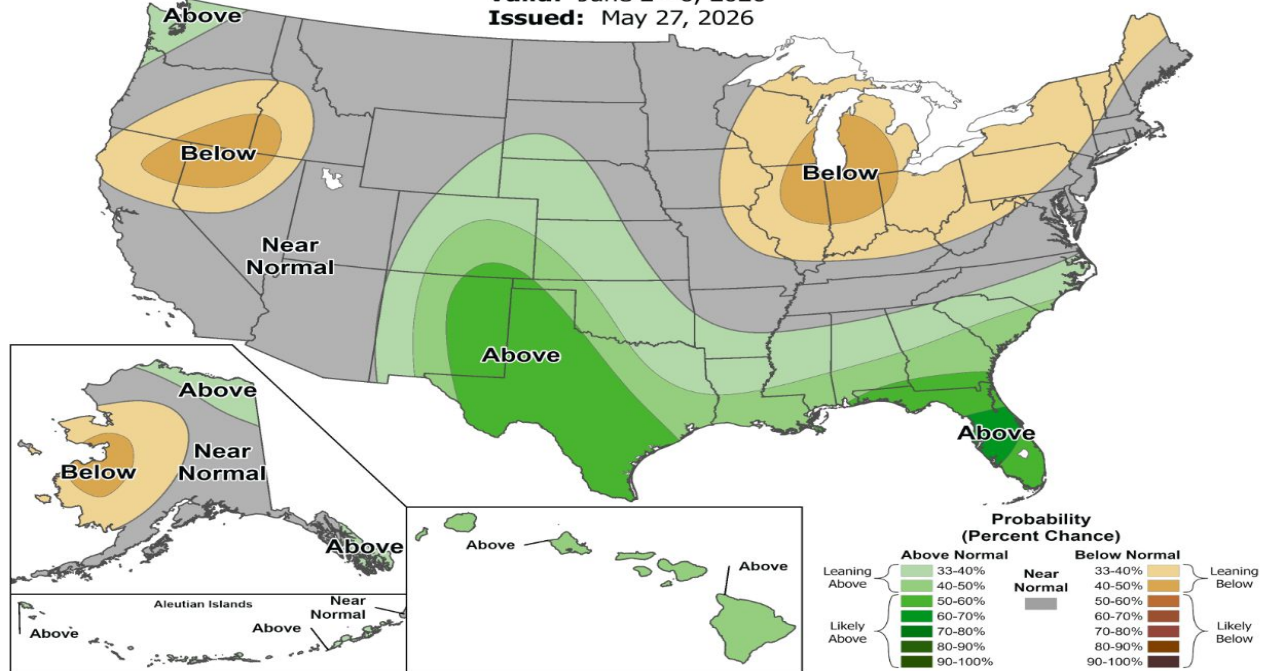
Precipitation Outlook

- Tropical moisture will continue to work northward into South Florida from the Caribbean Sea next week, as a mid to upper level trough remains over the eastern portion of the U.S.
- This pattern will lead to scattered to numerous rain chances.
- The **Climate Prediction Center** depicts **likely above** (50-60% chance) probability for precipitation for our area over the next 6-10 days.



6-10 Day Precipitation Outlook

Valid: June 2 - 6, 2026
Issued: May 27, 2026





Monthly Outlook

The latest monthly and seasonal outlooks can be found on the [CPC homepage](#)

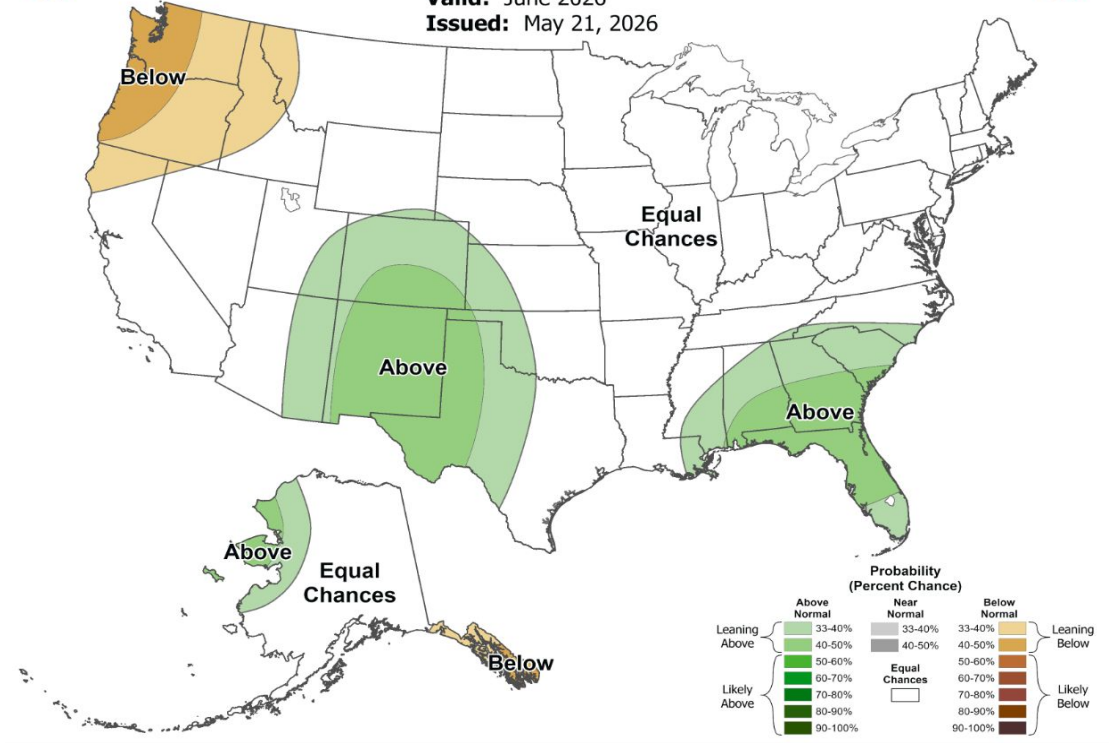
- The *Climate Prediction Center* depicts a **leaning above** (33-40% chance) probability for precipitation for our area in the month of June.



Monthly Precipitation Outlook

Valid: June 2026

Issued: May 21, 2026





Long-Range Outlooks

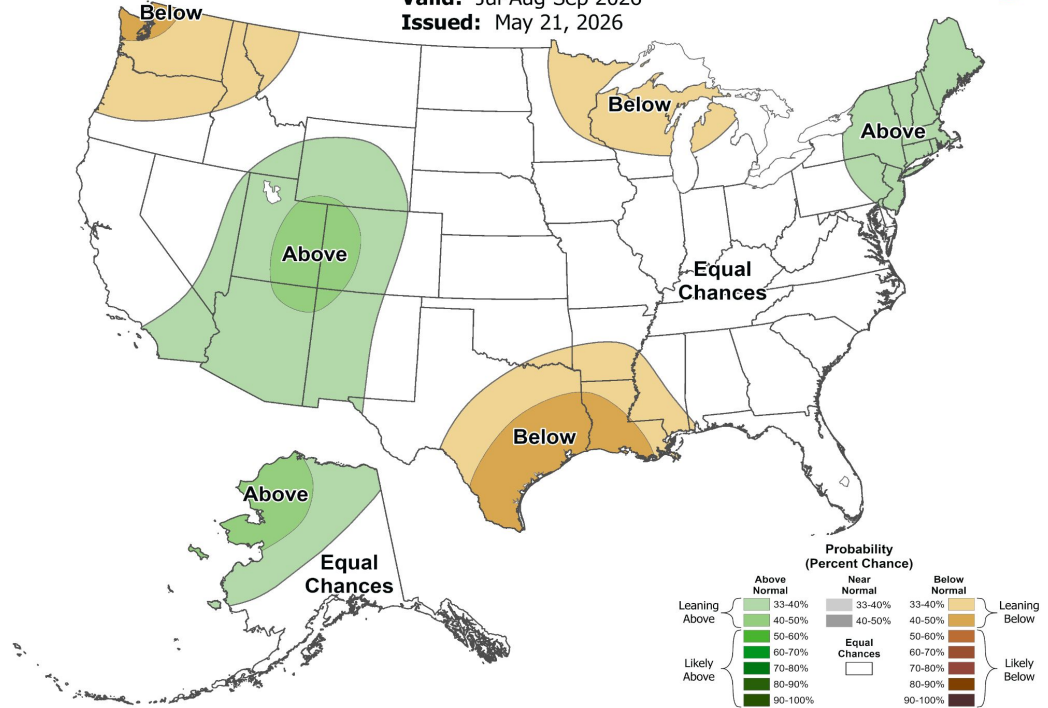
The latest monthly and seasonal outlooks can be found on the [CPC homepage](#)

- The *Climate Prediction Center* depicts an *equal chance of above or below normal* probability for precipitation for our area for the months of July through September 2026.



Seasonal Precipitation Outlook

Valid: Jul-Aug-Sep 2026
Issued: May 21, 2026





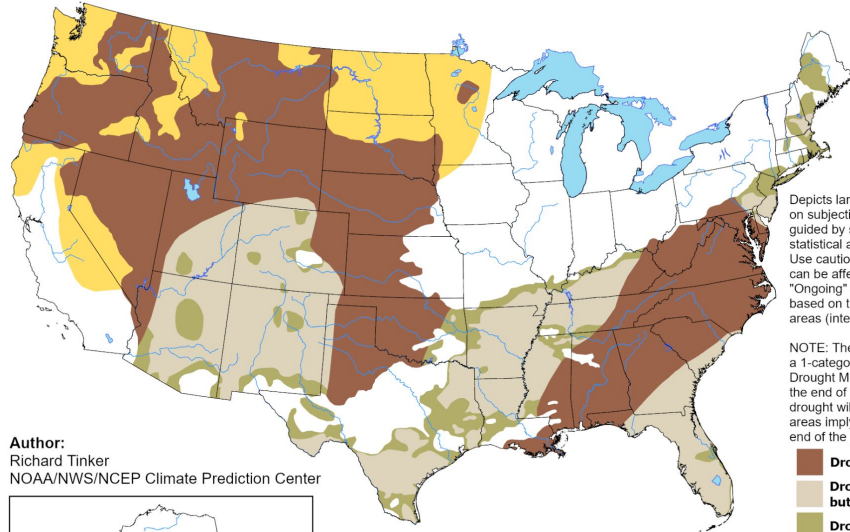
Drought Outlook

The latest monthly and seasonal outlooks can be found on the [CPC homepage](#)

- Drought is expected to persist over South Florida through August of 2026 but should slowly improve through the rainy season.

U.S. Seasonal Drought Outlook Drought Tendency During the Valid Period

Valid for May 21 - August 31, 2026
Released May 21, 2026

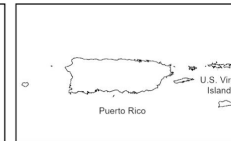
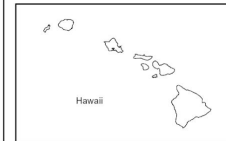
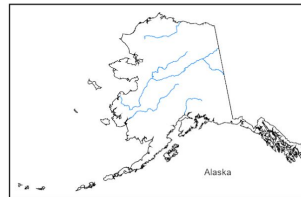


Depicts large-scale trends based on subjectively derived probabilities guided by short- and long-range statistical and dynamical forecasts. Use caution for applications that can be affected by short lived events. "Ongoing" drought areas are based on the U.S. Drought Monitor areas (intensities of D1 to D4).

NOTE: The tan areas imply at least a 1-category improvement in the Drought Monitor intensity levels by the end of the period, although drought will remain. The green areas imply drought removal by the end of the period (D0 or none).

- Drought persists**
- Drought remains, but improves**
- Drought removal likely**
- Drought development likely**
- No drought**

Author:
Richard Tinker
NOAA/NWS/NCEP Climate Prediction Center



<https://go.usa.gov/3eZ73>

Links to the latest:

- [Climate Prediction Center Monthly Drought Outlook](#)
- [Climate Prediction Center Seasonal Drought Outlook](#)



National Oceanic and Atmospheric Administration
U.S. Department of Commerce

National Weather Service
Miami-South Florida