

Drought Information Statement for South Florida

06, 26, 2025

Issued By: NWS Miami-South Florida

Contact Information: sr-mfl.webmaster@noaa.gov

- This product will be updated July 11, 2025 or sooner if drought conditions change significantly.
- Please see all currently available products at <https://drought.gov/drought-information-statements>.
- Please visit <https://www.weather.gov/mfl/DroughtInformationStatement> for previous statements.

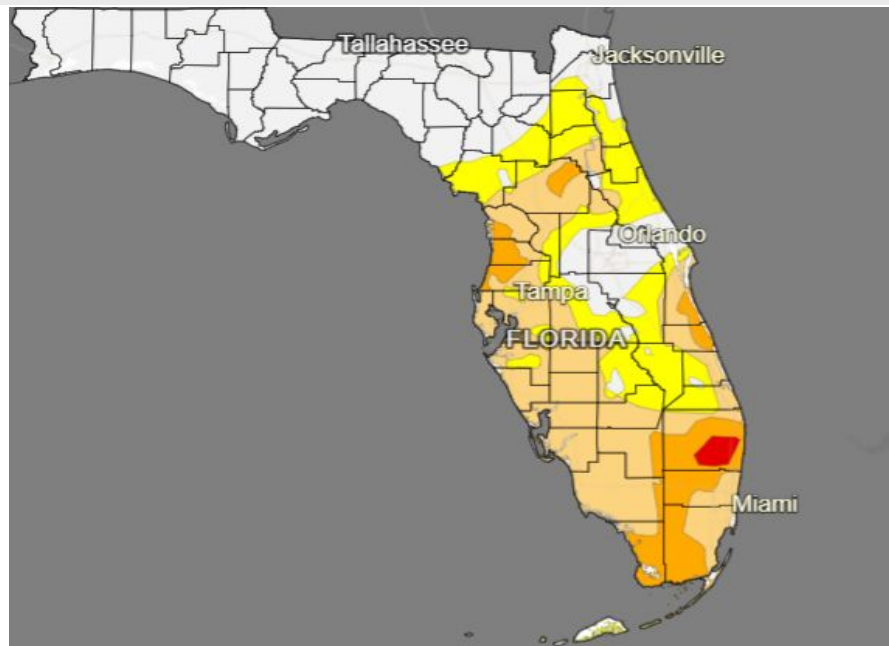




U.S. Drought Monitor

Link to the [latest U.S. Drought Monitor](#) for South Florida

- Drought improved over South Florida.
- Drought intensity and Extent
 - D3 (Extreme Drought): Parts of Palm Beach County.
 - D2 (Severe Drought): Portions of Eastern South Florida.
 - D1 (Moderate Drought): Rest of South Florida.
 - D0 (Abnormally Dry): Northern Glades County.



U.S. Drought Monitor

Image Caption: U.S. Drought Monitor valid 8am EDT June 26th.





Precipitation

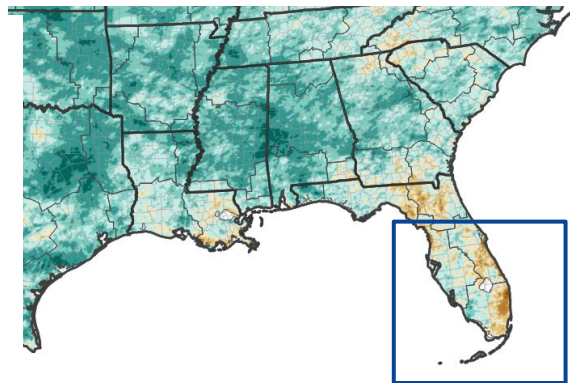
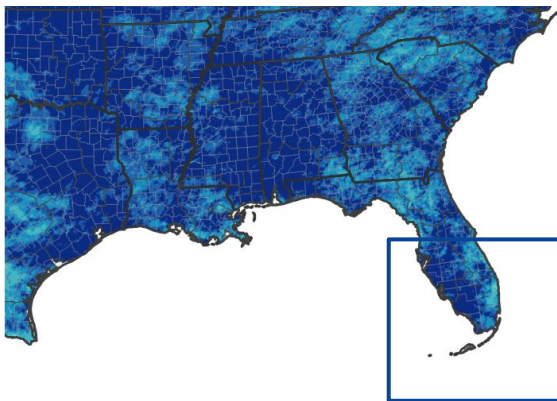
- Rainfall observed with the departure and percent of normal since JAN 1, 2025

The following table gives the rainfall from November 1, 2024 to April 16, 2025:

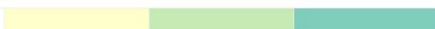
Airports:	Observed Rainfall	Dep fm Normal	Percent of Normal
Palm Beach Intl	11.85	-13.33	47%
Naples Municipal	16.90	+0.65	104%
Ft Lauderdale-Hollywood Intl	12.80	-11.58	53%
Miami Intl	20.61	-4.32	83%

Secondary Observation Sites

Moore Haven (Glades)	15.58	-4.10	79%
Opa Locka (Miami-Dade)	7.03	-16.46	30%
HomeStead (Miami-Dade)	16.79	-5.52	75%
Tamiami Airport (Miami-Dade)	20.36	-0.74	96%
North Perry Airport (Miami-Dade)	15.66	-8.31	65%
Ft Lauderdale Exec (Broward)	7.18	-13.84	34%
Hialeah (Miami-Dade)	19.01	-7.66	71%
Palm Beach Gardens (Palm Beach)	13.36	-13.82	49%
North Miami Beach (Miami-Dade)	14.53	-9.83	60%
Devils Garden (Hendry)	15.47	-5.92	72%



Inches of Precipitation



Precipitation Shown as a Percentage of Normal Conditions



Image Captions:

Left - Precipitation Amount for [area]

Right - Percent of Normal Precipitation for [area]

Data Courtesy High Plains Regional Climate Center.

Data over the past 30 days ending June 26th, 2025



National Oceanic and
Atmospheric Administration

U.S. Department of Commerce

National Weather Service
Miami-South Florida



Summary of Impacts

Links: See/submit [Condition Monitoring Observer Reports \(CMOR\)](#) and view the [Drought Impacts Reporter](#)

Hydrologic Impacts

- **Lake Okeechobee level currently at 10.97 FT which is -2.33 FT below normal of 13.30 FT**
Locks S-135 Boat Lock at the J&S Fish Camp in Martin County, G-36 Boat Lock on Henry Creek in Okeechobee County, S-127 Boat Lock at Buckhead Ridge in Glades County, and S-131 Boat Lock at Lakeport in Glades County are **closed** due to low level of Lake.
- Fisheating Creek at 2.40 FT which is 45% of normal level which is around 3.73 FT.
- The underground level water conservation area 1 in Interior Palm Beach County is at 15.45 feet and it should be at 15.75 feet which is -0.40 feet above normal for this time of year.
- The Underground level water conservation area 2 in Interior Broward County is at 10.94 feet and its normal level is 11.00 feet which is -0.06 feet above normal for this time of year.
- The underground level water conservation area 3 in Interior Miami-Dade County is at 8.67 feet and its normal level is at 9.66 feet which is -0.99 feet below normal for this time of year.

Fire Hazard Impacts

- KBDI index is 500-550 in Miami-Dade County, 450-500 in Broward County, 400-450 in Palm Beach & 300-400 Mainland Monroe Counties, and below 300 in rest of South Florida. This puts the eastern areas of South Florida **in a moderate risk of wildfires except high risk in Miami-Dade County**. The western areas of South Florida remain in a low risk.

Other Impacts

- Airboat tour companies over the eastern interior areas of South Florida is still seeing navigable waterways impassable.





Agricultural Impacts

- Soil moisture over South Florida is currently running in the 5 to 10 percentile range for this time of year.
- Only exception is over the Southeast portion of South Florida where it is 1 to 5 percentile range for this time of year.

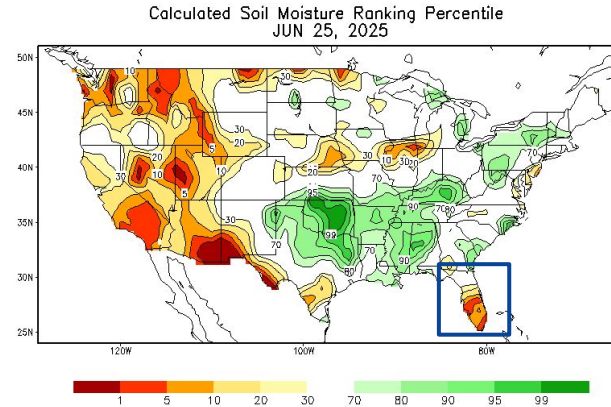


Image Captions:
CPC Calculated [Soil Moisture Ranking Percentile](#)
valid June 25, 2025



Link to [Wildfire Potential Outlooks from the National Interagency Coordination Center](#).

- Currently there is no fire burns in effect for South Florida.
- South Florida has an equal chance of above and below normal wildfire for the month of July.

Florida Forest Service - Current County-Enacted Burn Bans

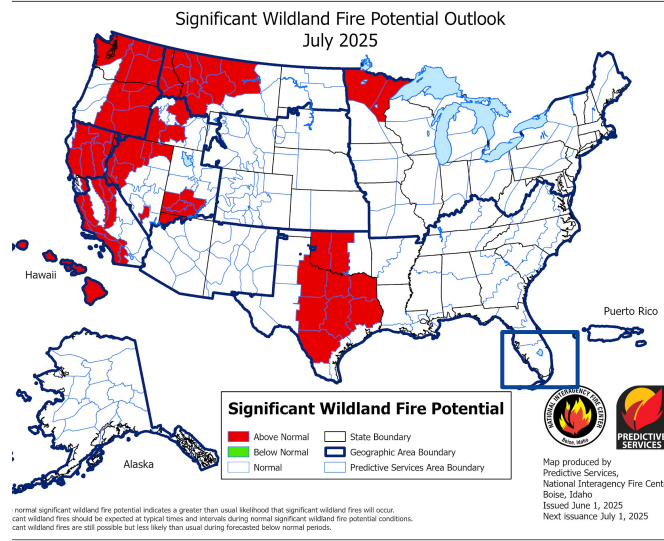
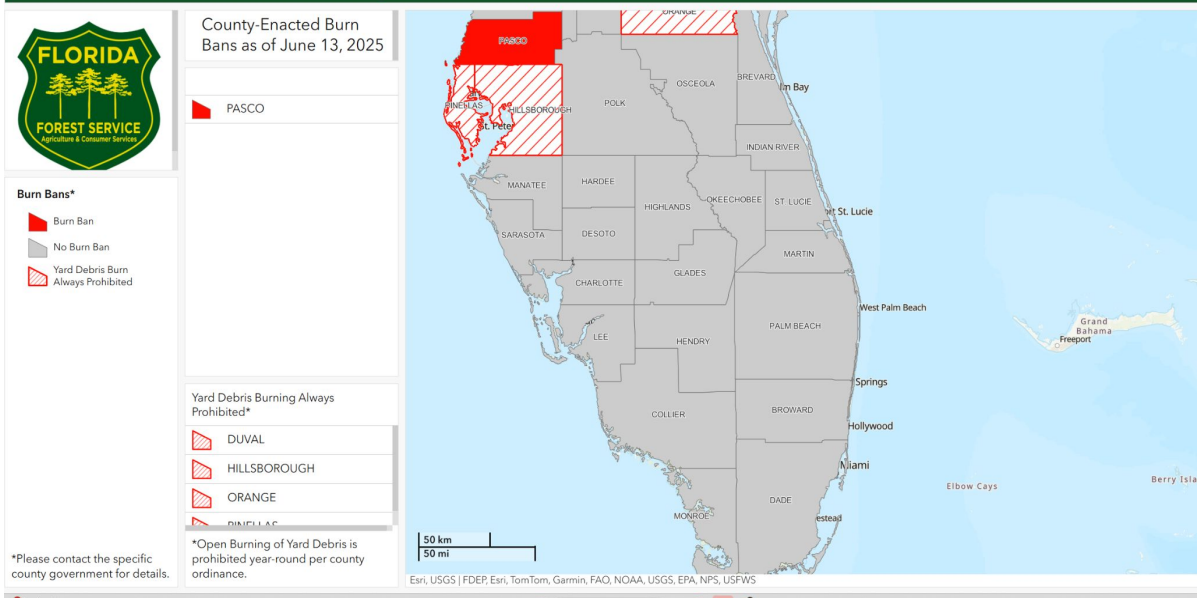


Image Caption: [Significant Wildland Fire Potential Monthly Outlook](#) for July 2025



Seven Day Precipitation Forecast

- South Florida will mainly see daily sea breeze showers and thunderstorms through July 2, 2025.
- The best coverage will be over the interior/Lake Okeechobee region.

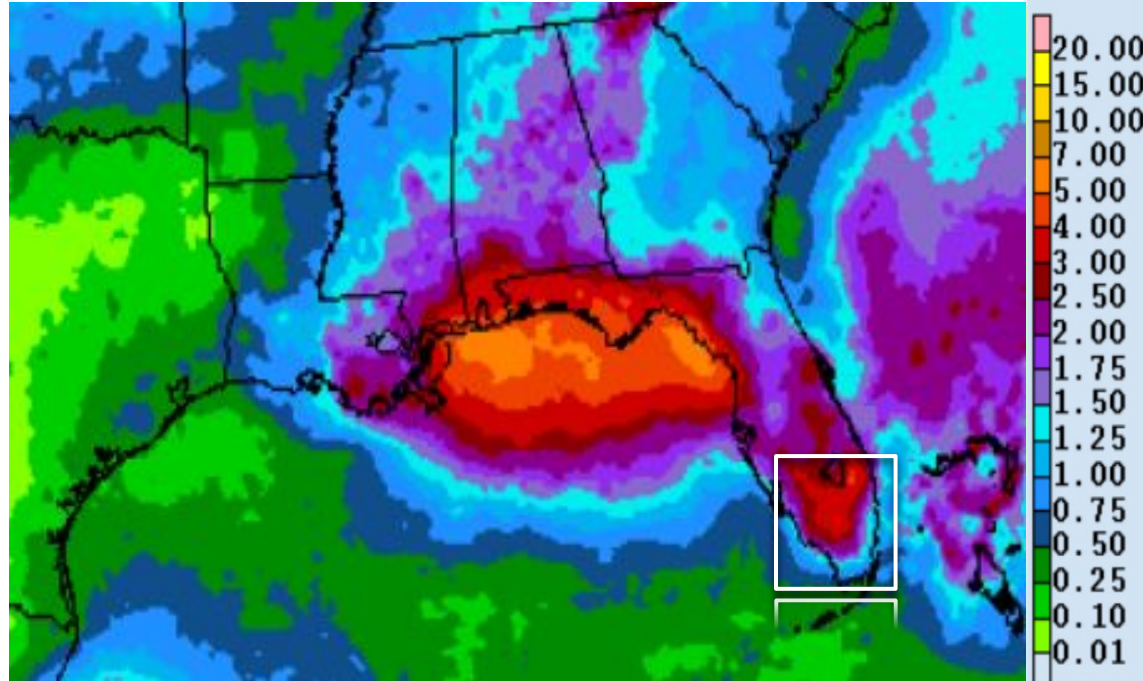


Image Caption: Weather Prediction Center [7-day precipitation forecast](#) valid Friday June 25 to Friday July 2, 2025





Long-Range Outlooks

The latest monthly and seasonal outlooks can be found on the [CPC homepage](#)

- Climate Prediction Center is forecasting above normal temperatures for July 2025.
- Climate Prediction Center is forecasting above normal rainfall for July 2025.

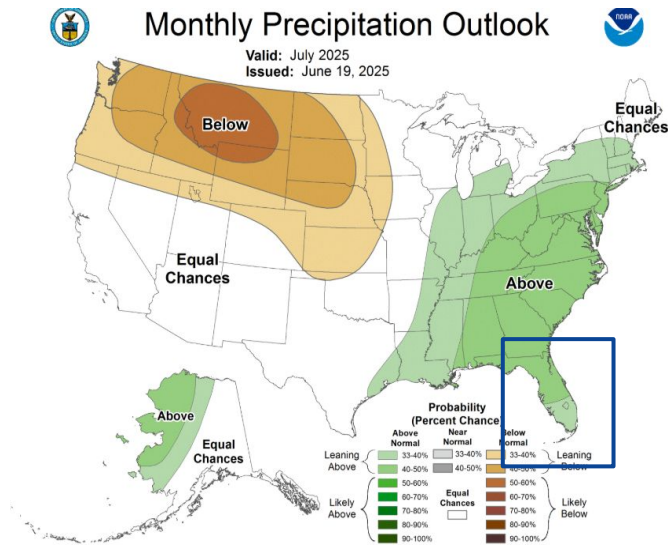
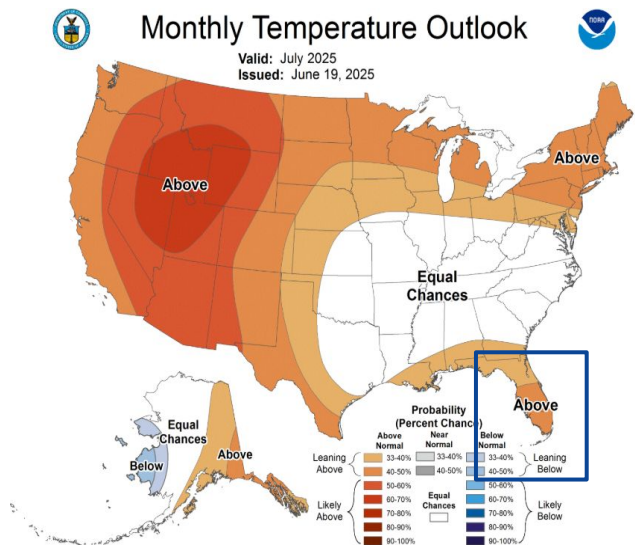


Image Captions:

Left - [Climate Prediction Center Monthly Temperature Outlook](#).

Right - [Climate Prediction Center Monthly Precipitation Outlook](#).

Valid 07 2025



National Oceanic and
Atmospheric Administration
U.S. Department of Commerce

National Weather Service
Miami-South Florida



Drought Outlook

The latest monthly and seasonal outlooks can be found on the [CPC homepage](#)

- The drought over South Florida should improved through September 2025



Links to the latest:

[Climate Prediction Center Monthly Drought Outlook](#)

[Climate Prediction Center Seasonal Drought Outlook](#)

Image Caption:

Climate Prediction Center Seasonal Drought Outlook Released
06 19, 2025 valid July through September 2025



**National Oceanic and
Atmospheric Administration**
U.S. Department of Commerce

**National Weather Service
Miami-South Florida**