



Drought Information Statement for South Florida

07 17 2025

Issued By: NWS Miami-South Florida

Contact Information: sr-mfl.webmaster@noaa.gov

- This product will be updated August 1, 2025 or sooner if drought conditions change significantly.
- Please see all currently available products at <https://drought.gov/drought-information-statements>.
- Please visit <https://www.weather.gov/mfl/DroughtInformationStatement> for previous statements.

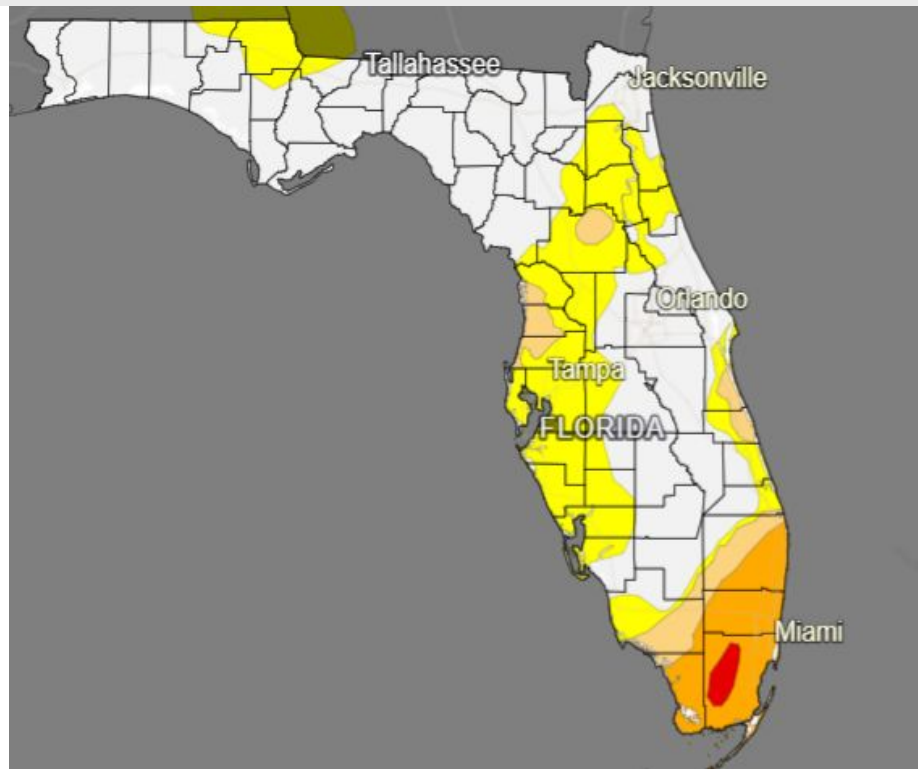




U.S. Drought Monitor

Link to the [latest U.S. Drought Monitor](#) for South Florida

- Drought improved over South Florida.
- Drought intensity and Extent
 - D3 (Extreme Drought): Parts of Interior Miami-Dade County
 - D2 (Severe Drought): Rest of east coast areas of South Florida including Monroe County.
 - D1 (Moderate Drought): Eastern Collier County
 - D0 (Abnormally Dry): Metro Collier County



U.S. Drought Monitor valid 8am EDT July 17th.





Precipitation

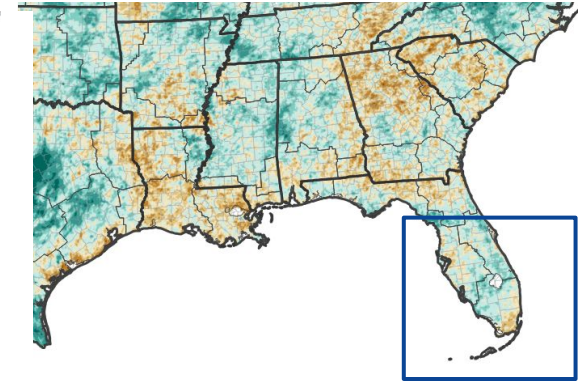
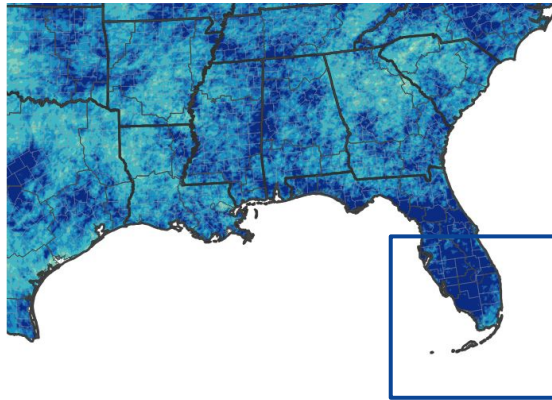
- Rainfall observed with the departure and percent of normal since JAN 1, 2025

The following table gives the rainfall from November 1, 2024 to April 16, 2025:

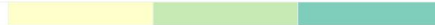
| Airports: | Observed Rainfall | Dep fm Normal | Percent of Normal |
|-------------------------------------|----------------------|------------------|----------------------|
| Palm Beach Intl | 18.90 | -10.54 | 64% |
| Naples Municipal | 23.29 | +0.40 | 102% |
| Ft Lauderdale-Hollywood Intl | 16.88 | -11.78 | 59% |
| Miami Intl | 26.97 | -3.69 | 88% |

Secondary Observation Sites

| | | | |
|---|--------------|---------------|------------|
| Moore Haven (Glades) | 25.53 | +0.22 | 100% |
| Opa Locka (Miami-Dade) | 14.50 | -14.59 | 50% |
| HomeStead (Miami-Dade) | 28.15 | +0.71 | 103% |
| Tamiami Airport (Miami-Dade) | 23.94 | -2.45 | 91% |
| North Perry Airport (Miami-Dade) | 20.18 | - 8.48 | 70% |
| Hialeah (Miami-Dade) | 23.58 | -9.02 | 23% |
| Palm Beach Gardens (Palm Beach) | 18.59 | -13.70 | 58% |
| North Miami Beach (Miami-Dade) | 18.50 | -11.82 | 61% |
| Devils Garden (Hendry) | 22.23 | - 5.44 | 80% |



Inches of Precipitation



Precipitation Shown as a Percentage of Normal Conditions



Image Captions:

Left - Precipitation Amount for [area]

Right - Percent of Normal Precipitation for [area]

Data Courtesy High Plains Regional Climate Center.

Data over the past 30 days ending July 16th, 2025



National Oceanic and
Atmospheric Administration
U.S. Department of Commerce

National Weather Service
Miami-South Florida



Summary of Impacts

Links: See/submit [Condition Monitoring Observer Reports \(CMOR\)](#) and view the [Drought Impacts Reporter](#)

Hydrologic Impacts

- **Lake Okeechobee level currently at 11.81 FT which is -1.80 FT below normal of 13.61 FT**
Locks S-135 Boat Lock at the J&S Fish Camp in Martin County, G-36 Boat Lock on Henry Creek in Okeechobee County, S-127 Boat Lock at Buckhead Ridge in Glades County, and S-131 Boat Lock at Lakeport in Glades County are **closed** due to low level of Lake.
- Fisheating Creek at 5.78 FT which is near the normal level which is around 4.71 FT.
- The underground level water conservation area 1 in Interior Palm Beach County is at 15.14 feet and it should be at 15.95 feet which is +0.19 feet above normal for this time of year.
- The Underground level water conservation area 2 in Interior Broward County is at 11.92 feet and its normal level is 11.35 feet which is +0.57 feet above normal for this time of year.
- The underground level water conservation area 3 in Interior Miami-Dade County is at 9.23 feet and its normal level is at 9.79 feet which is -0.56 feet below normal for this time of year.

Fire Hazard Impacts

- KBDI index is below 100 over the western areas of South Florida except for Mainland Monroe County where it is in the 100 to 200 range. Palm Beach and Broward Counties are in the 100 to 200 and Miami-Dade County is in the 200-300 range. However, the east coast metro areas are in the 400 to 500 range. This puts the east coast areas of South Florida **in a moderate risk of wildfires**. Rest of South Florida is in a low risk to no risk of wildfires.

Other Impacts

- Airboat tour companies over the eastern interior areas of Miami-Dade county are still seeing navigable waterways impassable.





Agricultural Impacts

- Soil moisture over the western areas of South Florida is at normal conditions.
- Soil moisture over the eastern areas of South Florida is at 10 to 20 percentile, except 5 to 10 percentile along the east coastal areas.

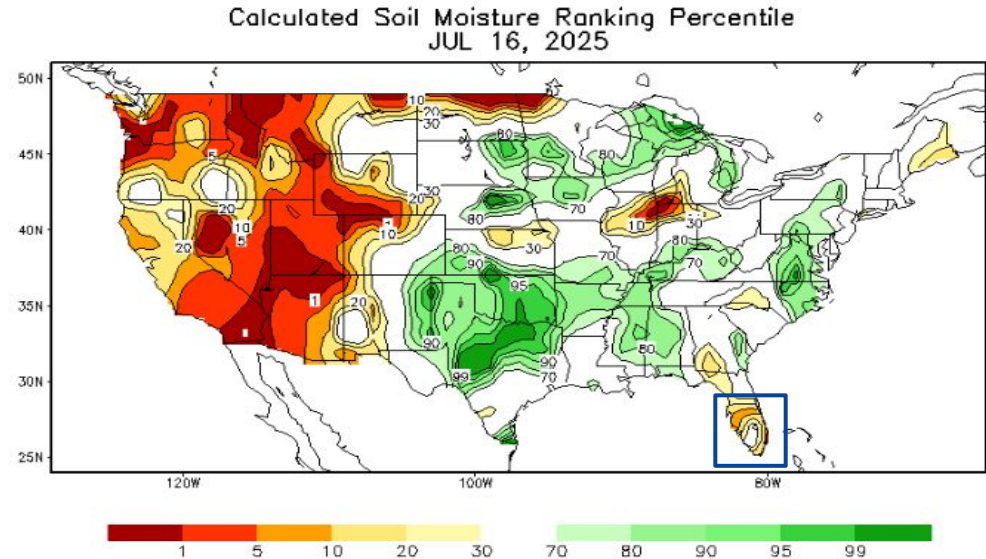


Image Captions:
CPC Calculated [Soil Moisture Ranking Percentile](#)
valid July 16 2025



Link to [Wildfire Potential Outlooks from the National Interagency Coordination Center](#).

- Currently there is no fire burns in effect for South Florida.
- South Florida has an equal chance of above and below normal wildfire for the month of July.

Florida Forest Service - Current County-Enacted Burn Bans

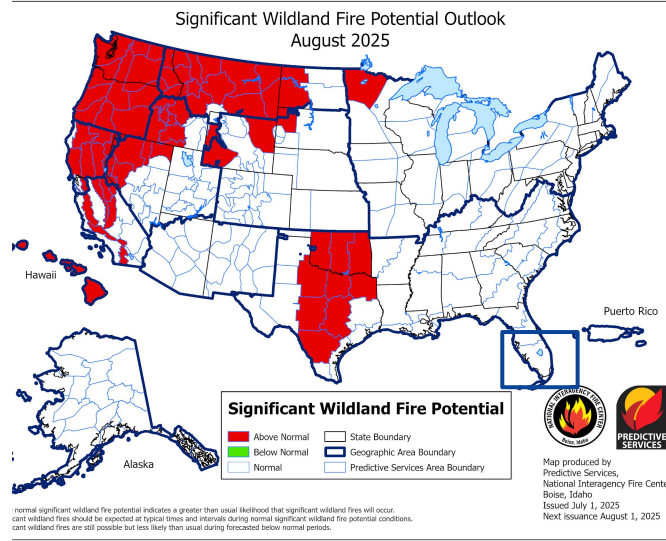
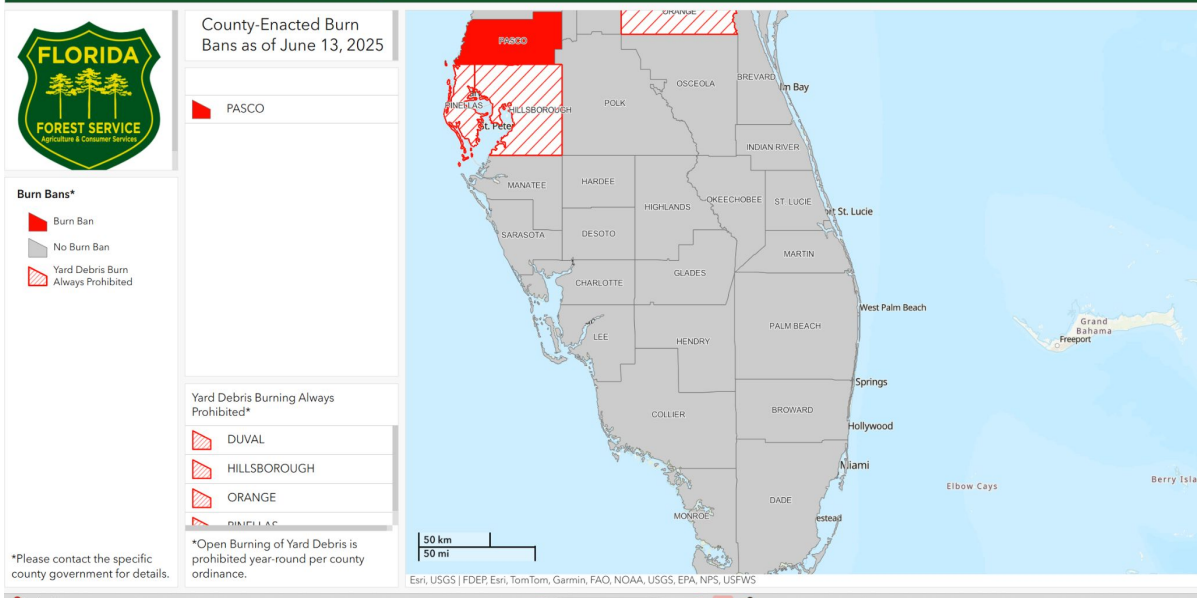


Image Caption: [Significant Wildland Fire Potential Monthly Outlook](#) for August 2025



Seven Day Precipitation Forecast

- South Florida will mainly see daily sea breeze showers and thunderstorms through July 21, 2025.
- The best coverage will be over the interior/Lake Okeechobee region.

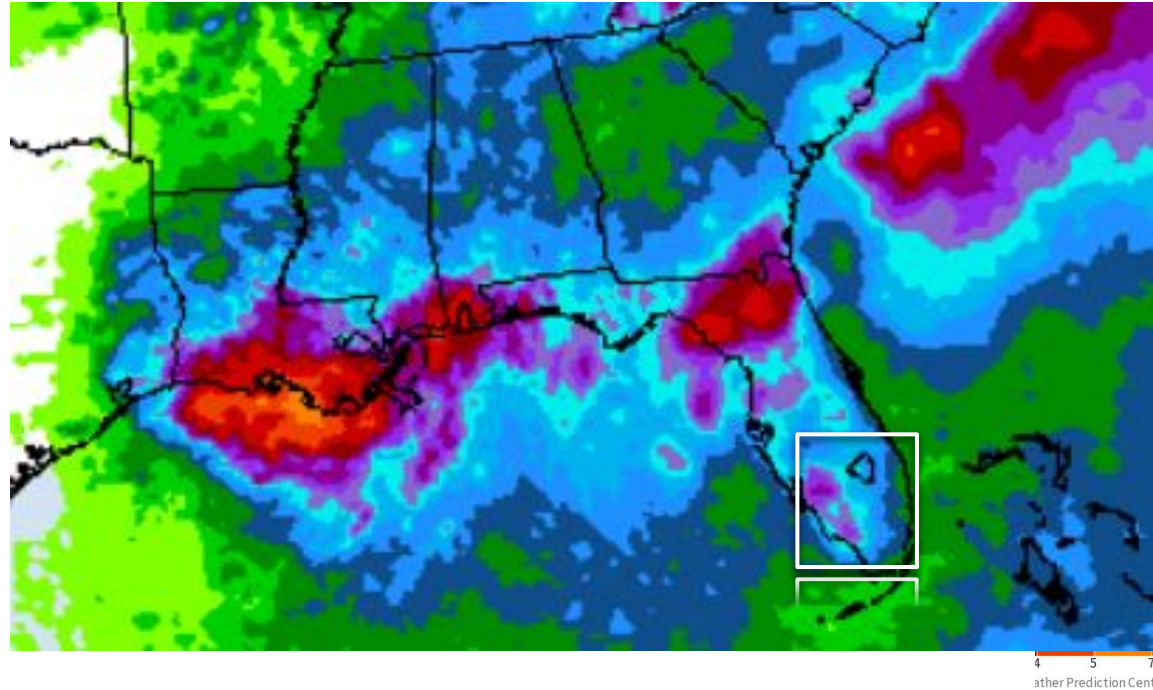


Image Caption: Weather Prediction Center [7-day precipitation forecast](#) valid Friday July 18 to Friday July 21, 2025





Long-Range Outlooks

The latest monthly and seasonal outlooks can be found on the [CPC homepage](#)

- Climate Prediction Center is forecasting above normal temperatures for July 2025.
- Climate Prediction Center is forecasting above normal rainfall for July 2025.

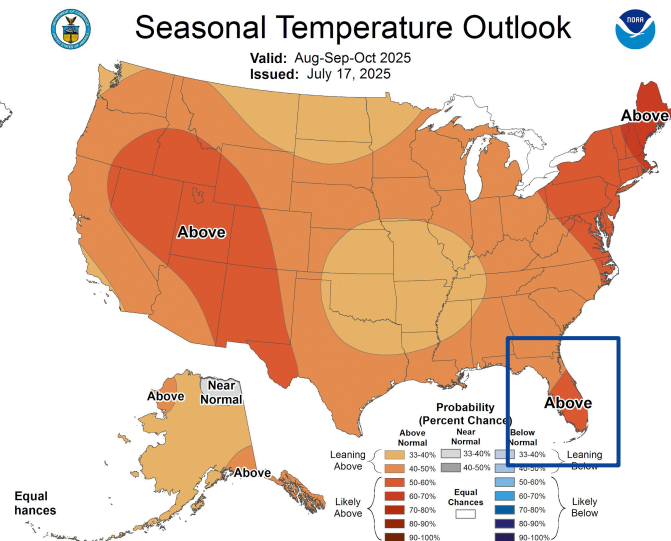
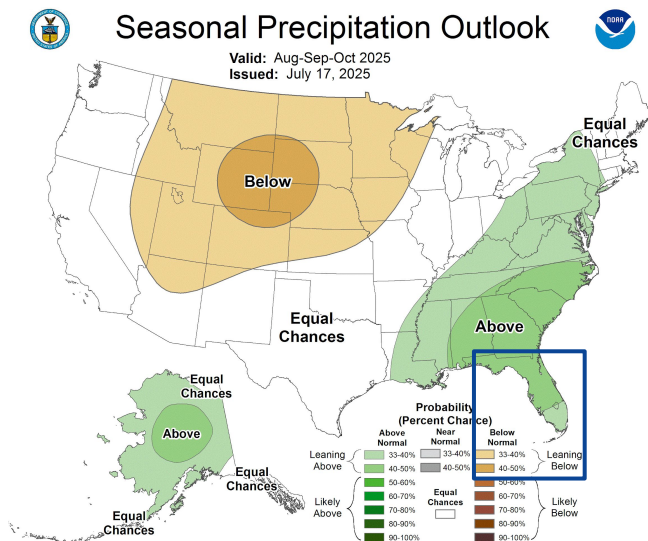


Image Captions:

Left - [Climate Prediction Center Monthly Temperature Outlook](#).

Right - [Climate Prediction Center Monthly Precipitation Outlook](#).

Valid AUG-OCT 2025



National Oceanic and
Atmospheric Administration
U.S. Department of Commerce

National Weather Service
Miami-South Florida



Drought Outlook

The latest monthly and seasonal outlooks can be found on the [CPC homepage](#)

- The drought over South Florida should improved through October 2025



Links to the latest:

[Climate Prediction Center Monthly Drought Outlook](#)

[Climate Prediction Center Seasonal Drought Outlook](#)

Image Caption:

Climate Prediction Center Seasonal Drought Outlook Released
06 19, 2025 valid August through October 2025



**National Oceanic and
Atmospheric Administration**
U.S. Department of Commerce

**National Weather Service
Miami-South Florida**