



# Drought Information Statement for South Florida

03 05 2026

Issued By: NWS Miami-South Florida

Contact Information: [sr-mfl.webmaster@noaa.gov](mailto:sr-mfl.webmaster@noaa.gov)

- Ongoing Extreme to Severe Drought Across South Florida
- Please see all available products at <https://drought.gov/drought-information-statements>.
- Visit our local interactive drought page at <https://nws-miami-drought-page-noaa.hub.arcgis.com/>



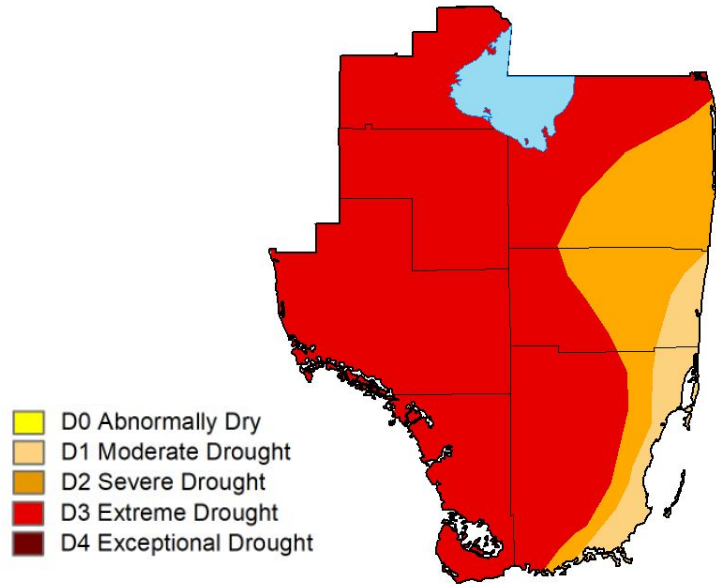


# U.S. Drought Monitor

Link to the [latest U.S. Drought Monitor](#) for South Florida

- Drought conditions continue to worsen across the region, with the recent expansion of extreme drought (D3) into the remainder of southwestern Florida this week.
- Drought intensity and Extent
  - **D1 (Moderate Drought)**: Metro/Coastal Broward & Miami-Dade.
  - **D2 (Severe Drought)**: Coastal/Metro Palm Beach.
  - **D3 (Extreme Drought)**: Inland and Western South Florida.

*U.S. Drought Monitor*  
**Miami - South Florida WFO**



U.S. Drought Monitor valid 7AM EDT March 5th, 2026.

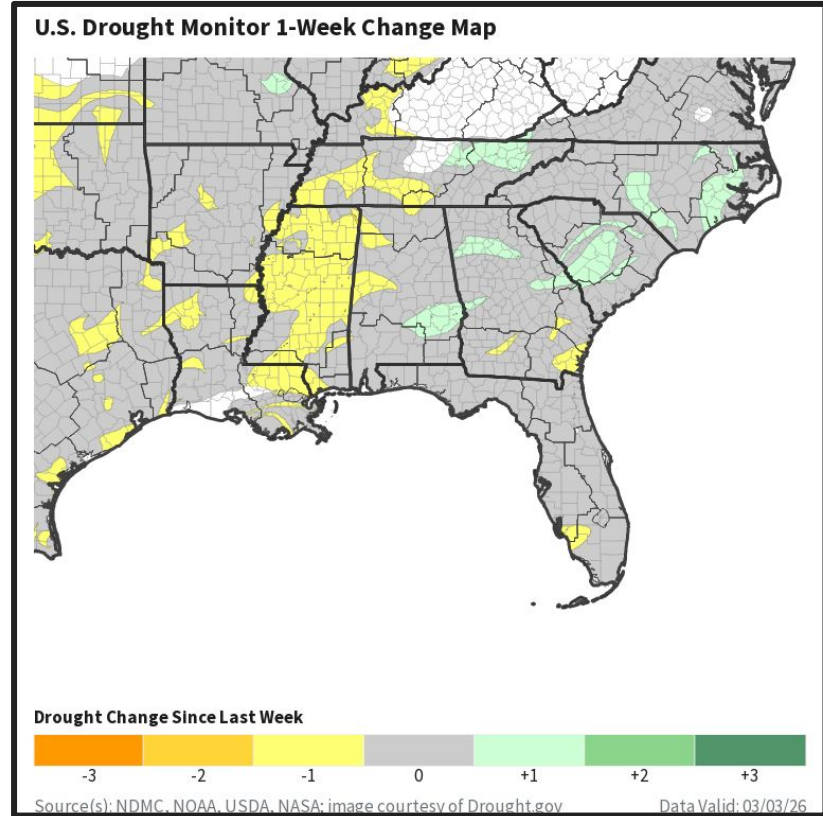




# Recent Change in Drought Intensity

Link to the latest [4-week change map](#) for South Florida

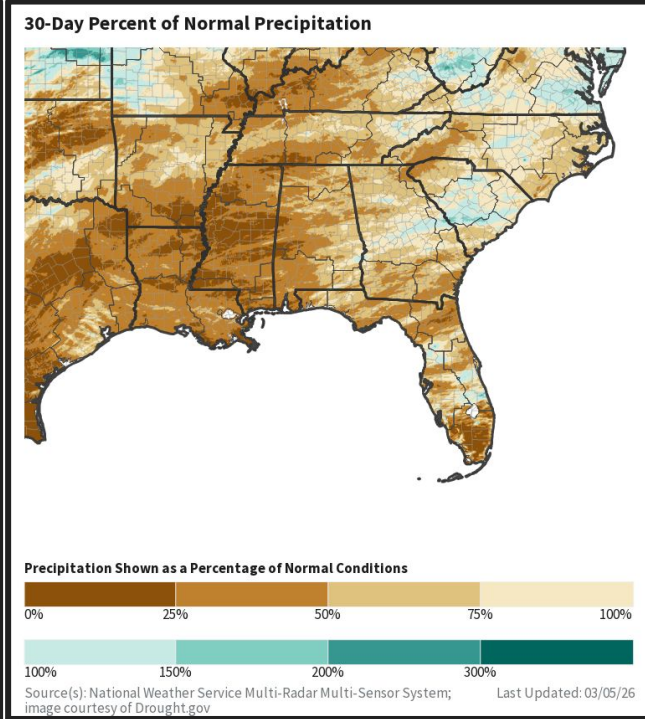
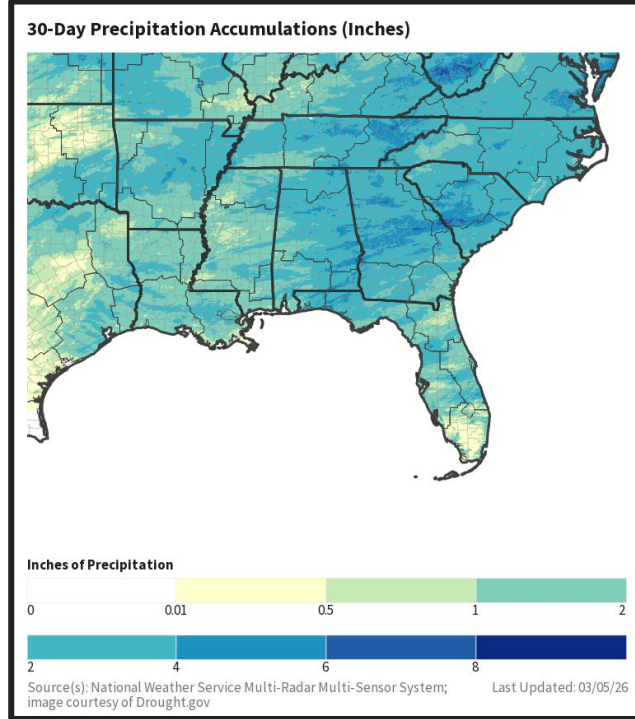
- No major changes were made to drought conditions across South Florida over the past week.
- **One Week Drought Monitor Class Change**
  - **One Week Degradation:** Western Collier & Hendry counties are now in extreme drought.





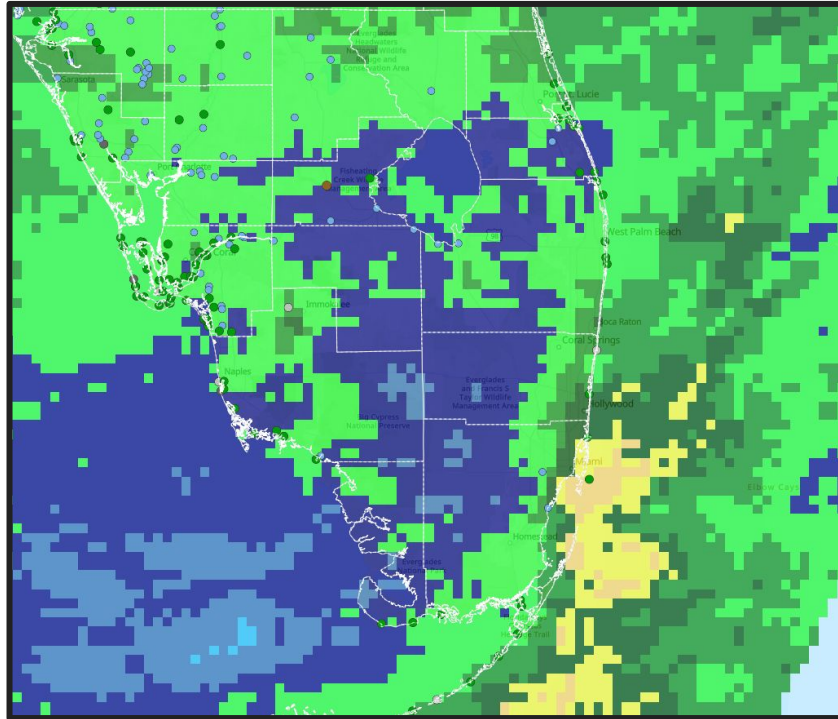
# 30 Day Observed Precipitation & Percentage of Normal

- Rainfall amounts across the region have remained below the **25th percentile** over the past 30 days.
- While a few isolated locations have received higher amounts, the majority of South Florida has seen less than half an inch of rainfall in the past 30 days.



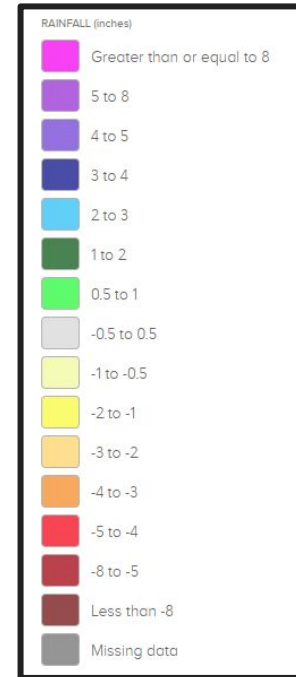
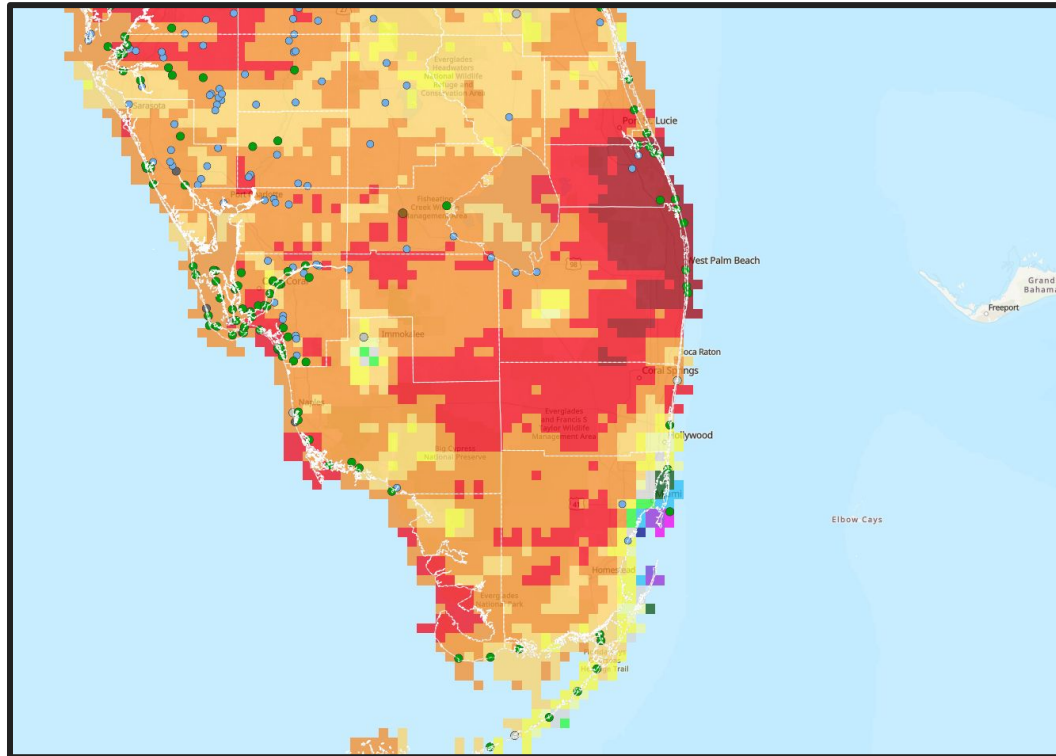


# 90 Day Observed Precipitation (Since 12/05/2025)





# 90 Day Rainfall Departure (Since 12/05/2025)





# Hydrologic Impacts

Links: See/submit [Condition Monitoring Observer Reports \(CMOR\)](#) and view the [Drought Impacts Reporter](#)

## Hydrologic Impacts

- (3/5/26) Lake Okeechobee water level is currently at 12.28 feet which is **-2.22 feet** below normal of 14.50 feet.
- The underground level water conservation area 1 in Interior Palm Beach County is at 16.00 feet and it should be at 16.49 feet which is **-0.49 feet** below normal for this time of year.
- The Underground level water conservation area 2 in Interior Broward County is at 12.28 feet and its normal level is 11.00 feet which is **+1.28 feet** above normal for this time of year.
- The underground level water conservation area 3 in Interior Miami-Dade County is at 8.36 feet and its normal level is at 10.09 feet which is **-1.73 feet** below normal for this time of year.



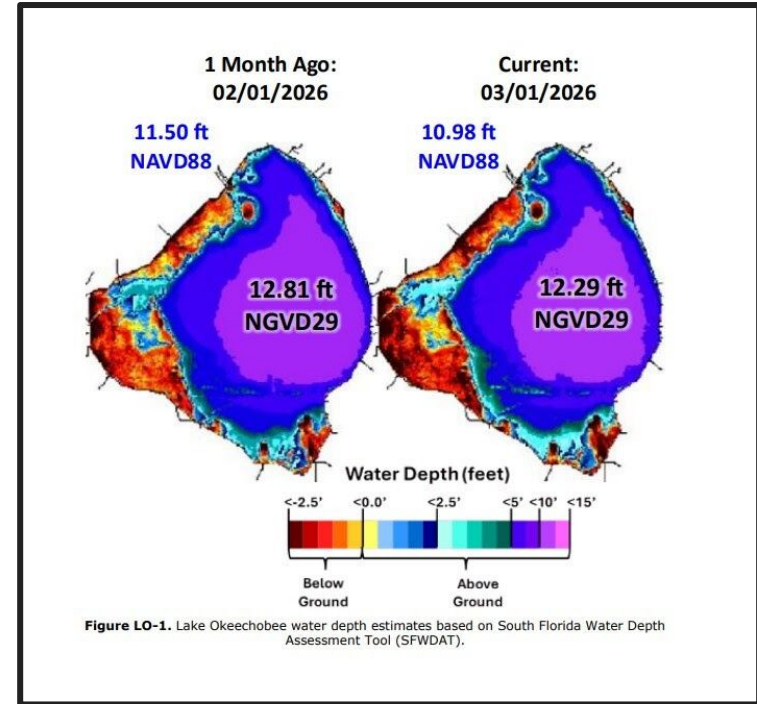


# Hydrologic Impacts

Links: See/submit [Condition Monitoring Observer Reports \(CMOR\)](#) and view the [Drought Impacts Reporter](#)

## Hydrologic Impacts

- (3/5/26) Lake Okeechobee water level is currently at 12.28 feet which is **-2.22 feet** below normal of 14.50 feet.
- For more information on daily water levels, please visit the US Army Corps of Engineers webpage with reported information [here](#).



Courtesy of SFWMD



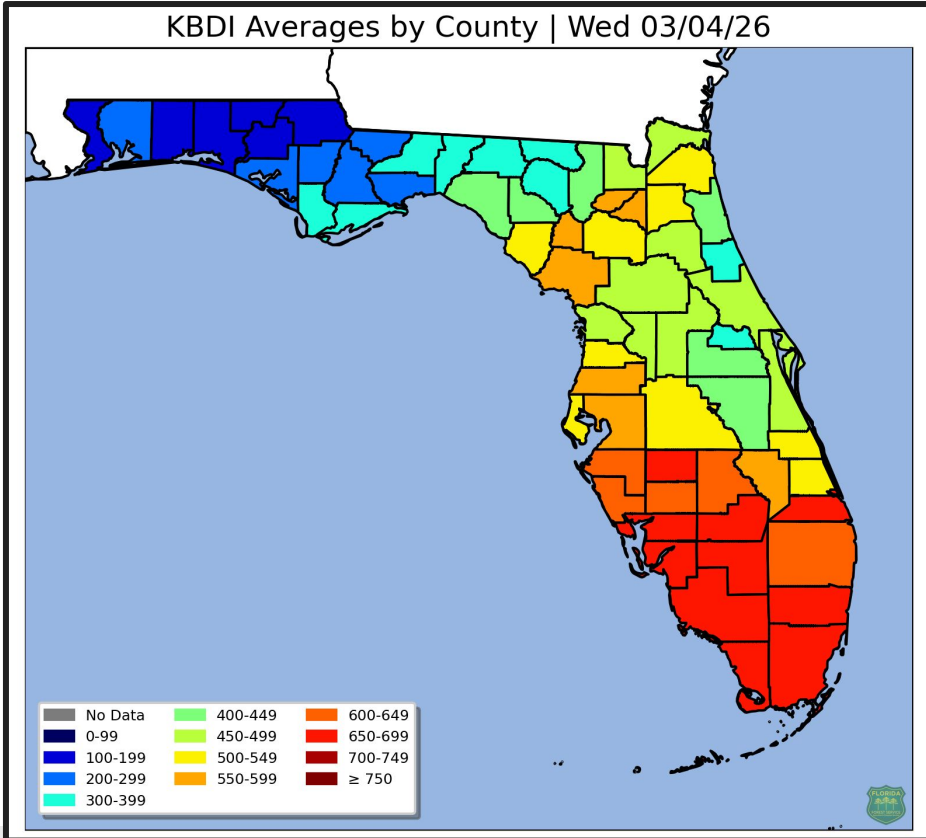


# Fire Hazard Impacts

[Keetch-Byram Drought Index \(KBDI\)](#)

## Fire Hazard Impacts

- KBDI index is 600 to 699 across all of South Florida.



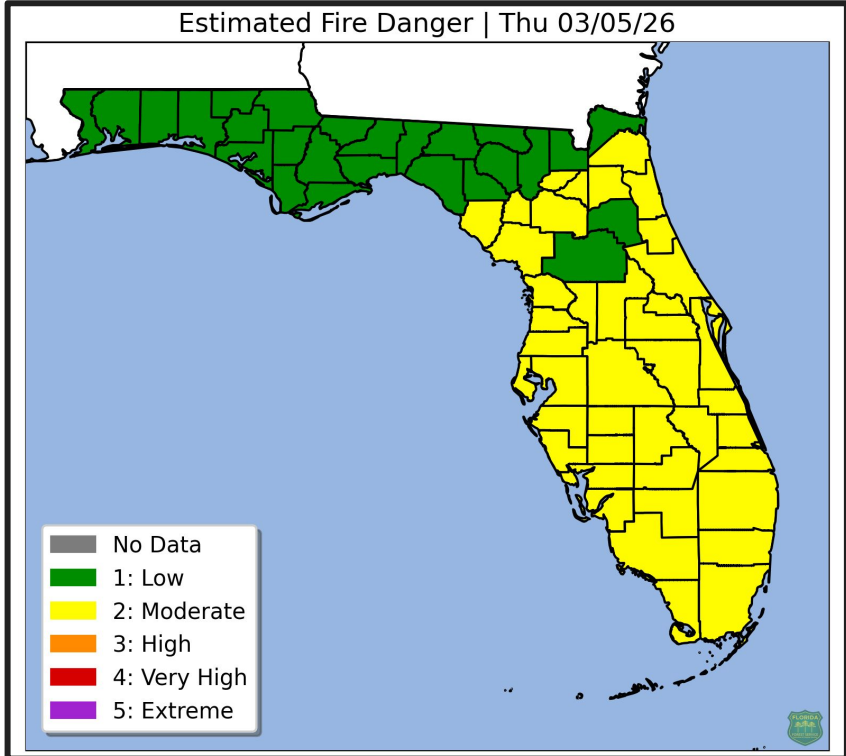


# Fire Danger Matrix

[Fire Danger Risk](#)

## Fire Danger Matrix

- A moderate fire (level 2 of 5) danger risk across all of South Florida.



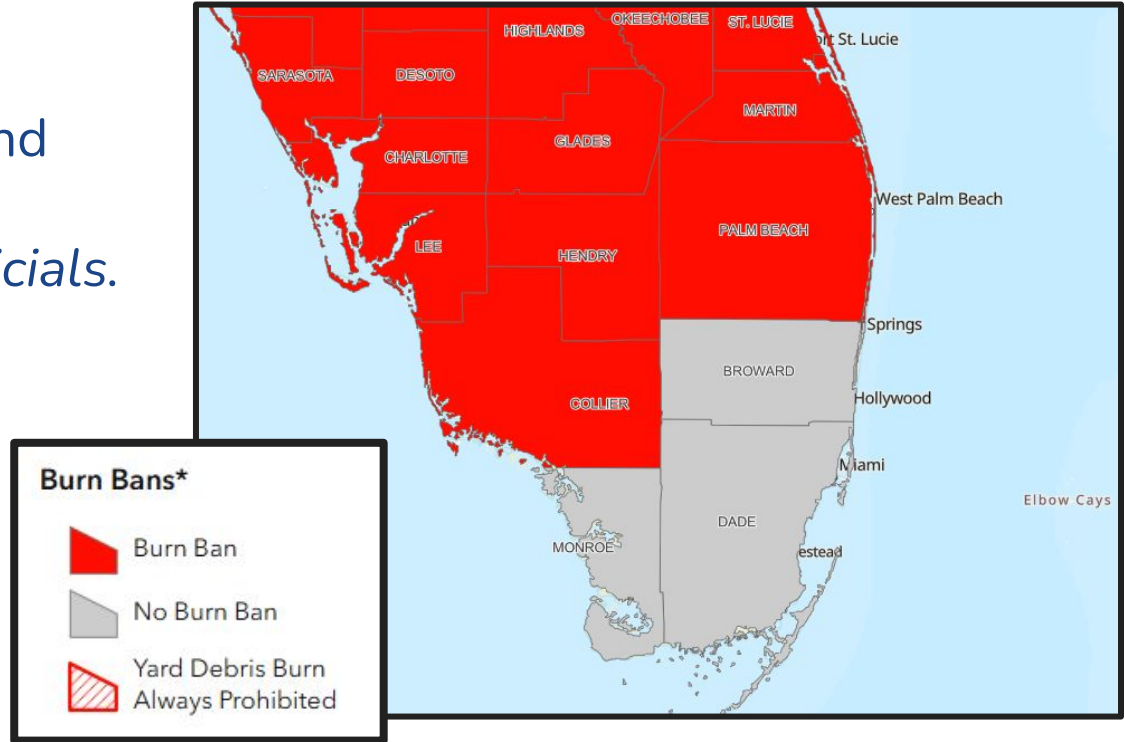


# Burn Bans

Link: [County Burn Bans](#)

## Current Burn Bans

- Collier, Hendry, Glades, and Palm Beach Counties.
- *Issued by local county officials.*



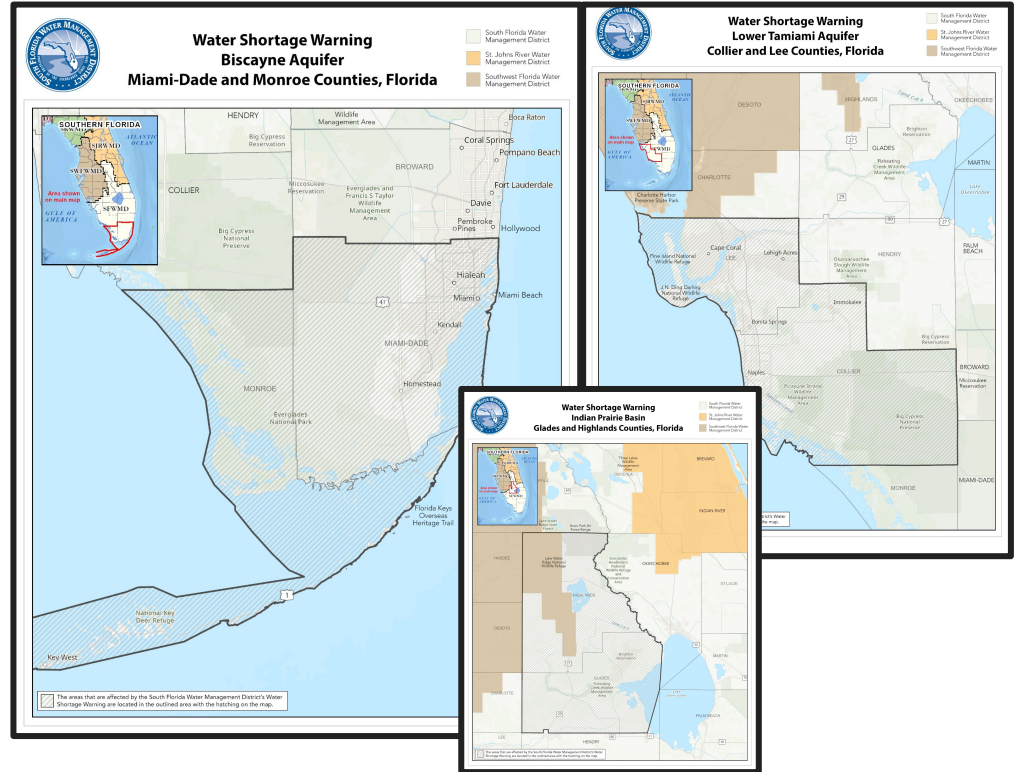


# Water Shortage Warnings

Link: [South Florida Water Management District Water Shortage Page](#)

## Water Shortage Warnings

- Collier, Glades, Miami-Dade Counties
- *Issued by the South Florida Water Management District.*





# Soil Moisture

- South Florida continues to remain between the 1 to 5 percentile for soil moisture.

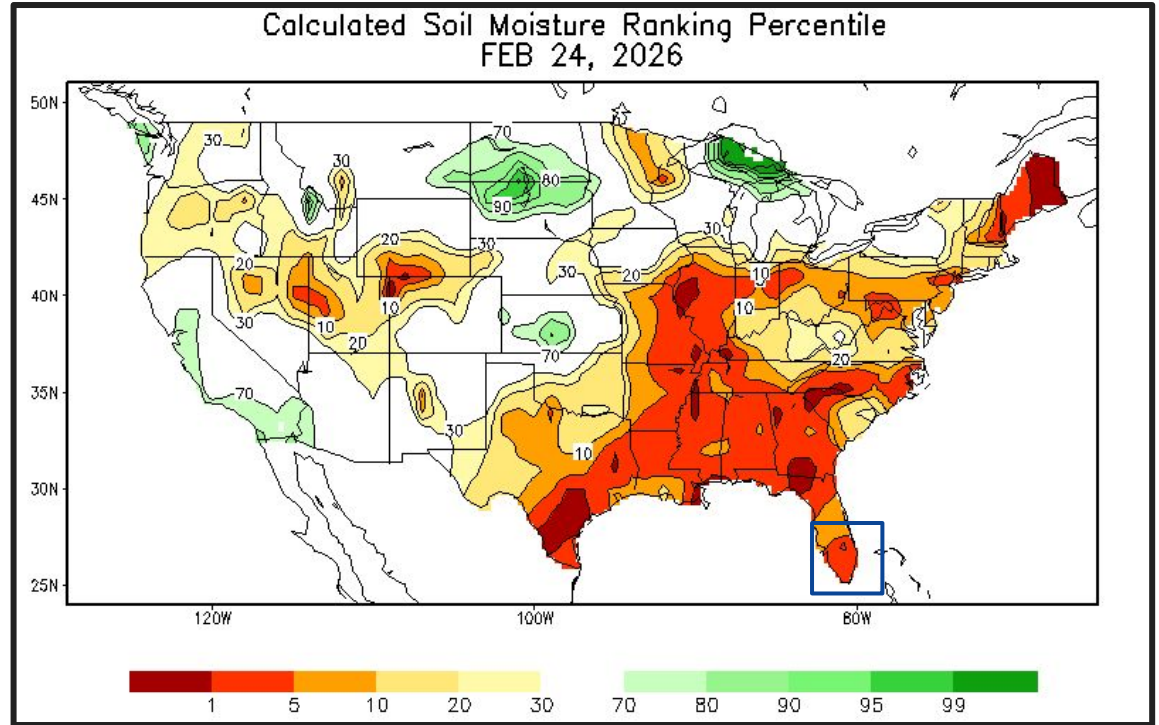


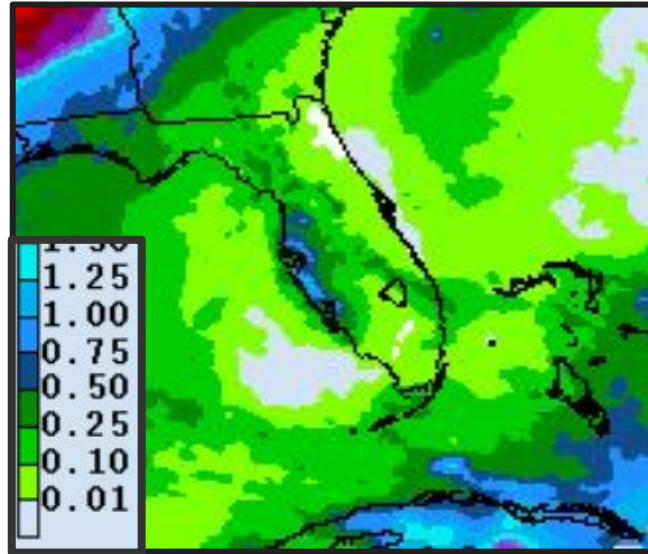
Image Captions:  
CPC Calculated [Soil Moisture Ranking Percentile](#)  
valid February 24th, 2026



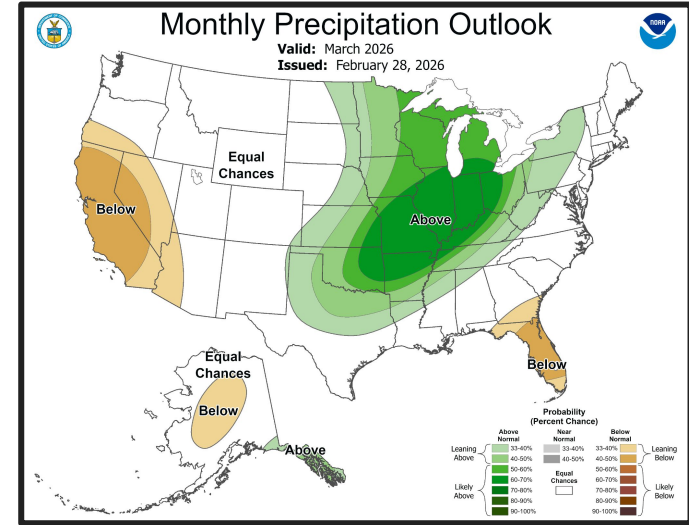


# Precipitation Outlook

- Rainfall accumulations across the region will mostly remain below 0.50 inches through March 12th.
- CPC's [March monthly precipitation outlook](#) is forecast to be 33 to 40 percent below normal.



168 Hour Day 1-7 Rainfall Accumulations -  
Weather Prediction Center  
(Through 8am March 12th, 2026)



Monthly Precipitation Outlook  
Climate Prediction Center  
Valid March 2026

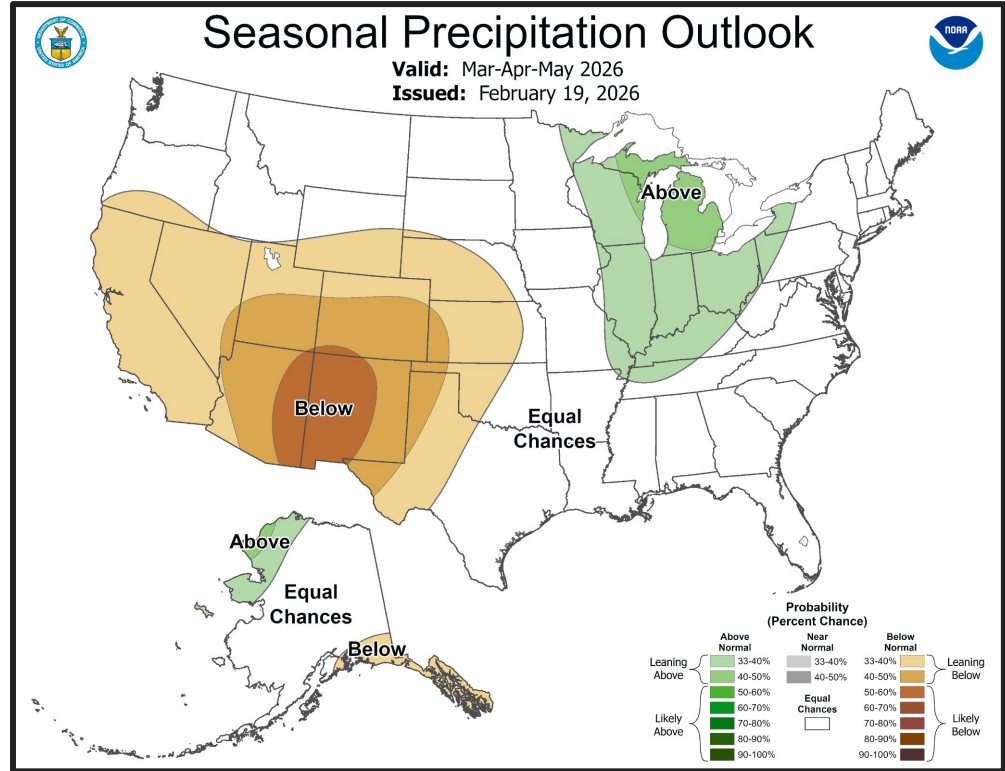




# Long-Range Outlooks

The latest monthly and seasonal outlooks can be found on the [CPC homepage](#)

- The Climate Prediction Center depicts an equal chance of seeing below or above normal rainfall.
- The Climate Prediction Center depicts a 40-50% chance (“leaning above normal”) of higher than normal temperatures.

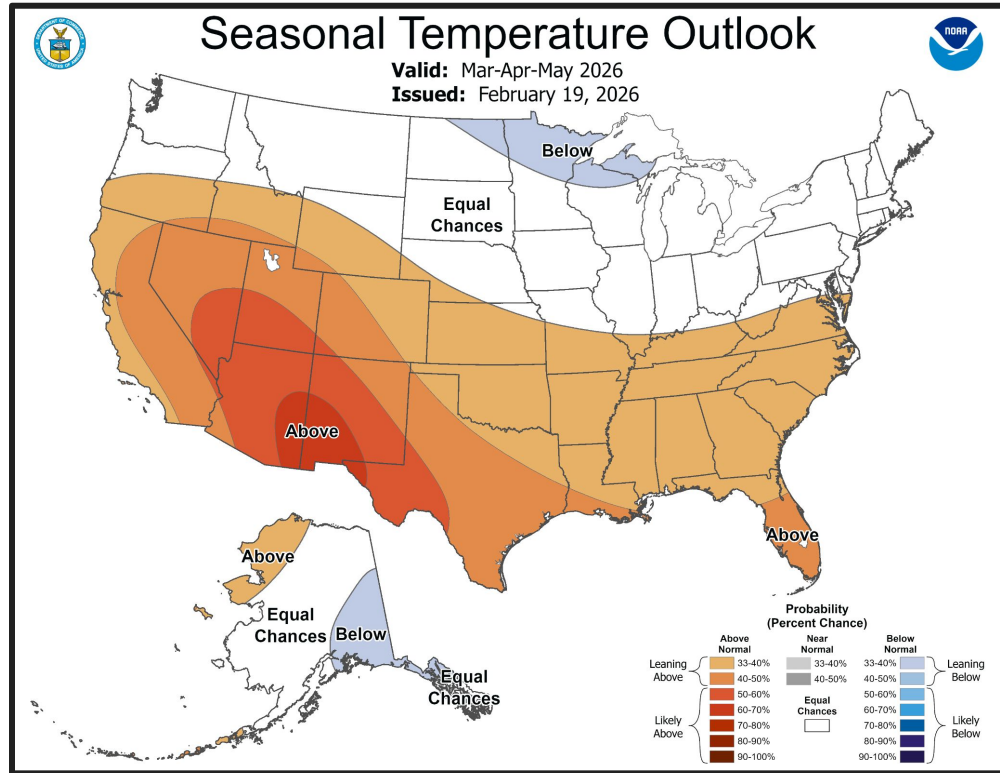




# Long-Range Outlooks

The latest monthly and seasonal outlooks can be found on the [CPC homepage](#)

- The Climate Prediction Center depicts an equal chance of seeing below or above normal rainfall.
- The Climate Prediction Center depicts a 40-50% chance (“leaning above normal”) of higher than normal temperatures.

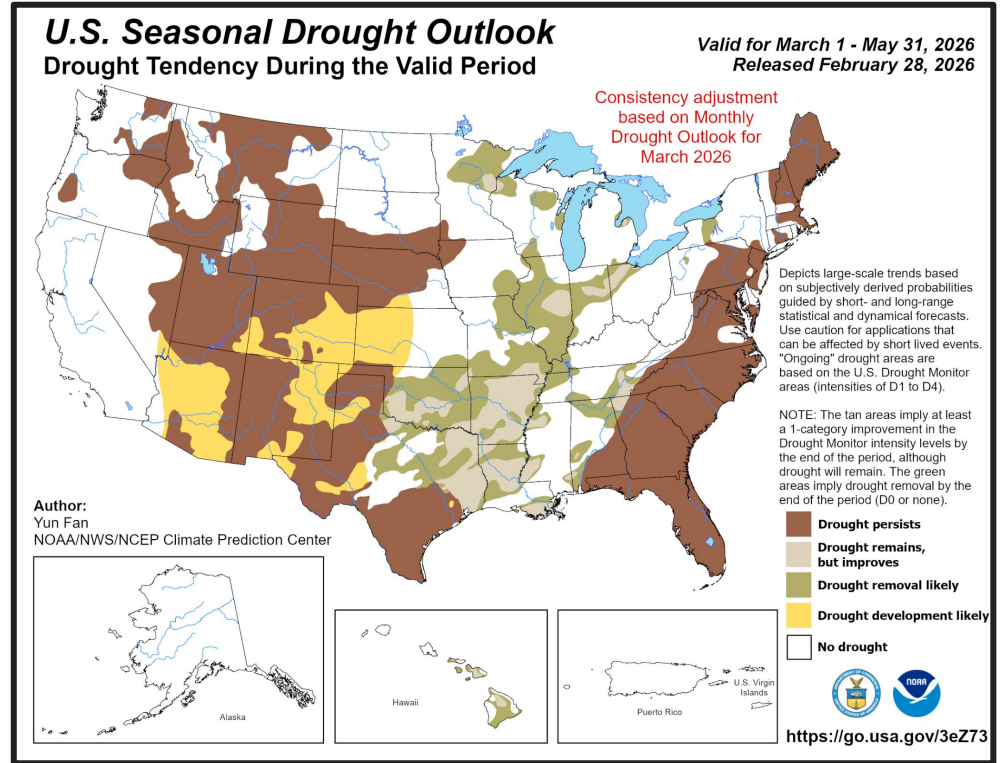




# Drought Outlook

The latest monthly and seasonal outlooks can be found on the [CPC homepage](#)

- Drought is expected to persist across the region over the next three months as rainfall deficits remain even with the prospect of equal chances of below, above, or near normal rainfall.
- Should rainfall over the next three months be much below normal, drought conditions could worsen with time, especially heading into spring when temperatures also warm.



Links to the latest:

- [Climate Prediction Center Monthly Drought Outlook](#)
- [Climate Prediction Center Seasonal Drought Outlook](#)

