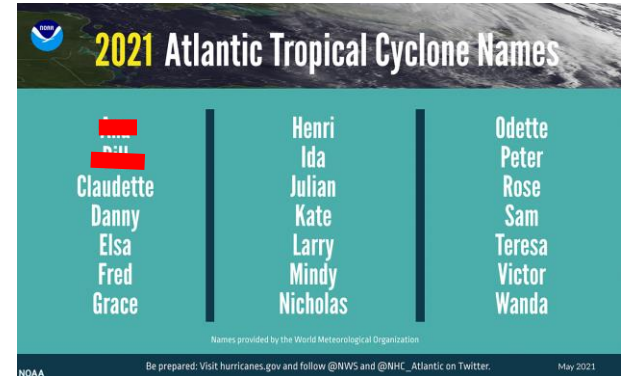
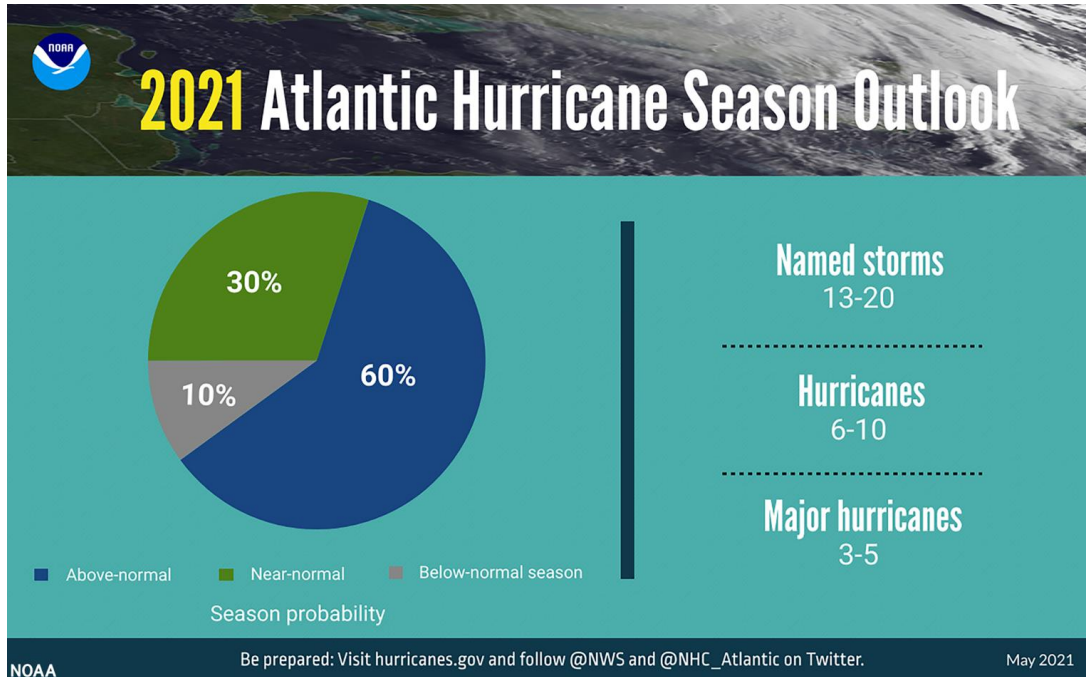

Get Ready!

June 21, 2021



It Only Takes One!



7 Simple Things To Do Now!



- 1. Determine your risk...**

Storm surge has potential to impact the entire county.

- 1. Develop an evacuation plan...**

The entire County is a hurricane evacuation area. Where will you go? Where will you stay?

- 1. Assemble disaster supplies...**

Have supplies ready to go for you, your family and pets.

- 1. Secure an insurance check-up...**

Make sure you are properly covered with homeowners and flood.

- 1. Strengthen your home and help your neighbor...**

Is it in good order? Any one with Special Needs?

- 1. Know your trusted sources of information...**

National Hurricane Center, NWS Forecast Office, ReadyNC, OBXAlerts.

- 1. Complete a written hurricane plan...**

Do it now when you have the time and are not under pressure.

Emergency Decision Making



Evacuation Zones



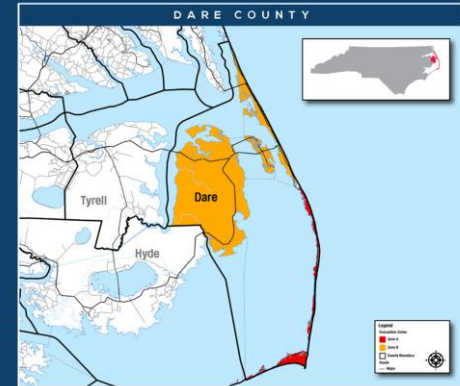
HURRICANE SEASON IS HERE.
KNOW YOUR ZONE

KNOWYOURZONE.NC.GOV

KNOW YOUR
ZONE

KNOW YOUR ZONE

In an emergency, local officials will order evacuations using zones to keep your family safe. These zones highlight areas most at risk to impacts from hurricanes and tropical storms.



Find your evacuation zone where you live, work or play.
KNOWYOURZONE.NC.GOV



[@DareCountyEM](https://www.facebook.com/DareCountyEM)

KNOW YOUR
ZONE



Evacuation Plan



HAVE AN EVACUATION PLAN

- Protect yourself from life-threatening storm conditions.
- If ordered to evacuate, do so quickly and calmly.
- Plan to stay with family/friends or at a hotel – not at a shelter during COVID-19.
- Visit [KnowYourZone.nc.gov](https://www.knowyourzone.nc.gov) to see if you are in a coastal evacuation zone.



Life-threatening storm surge, flooding and high winds take priority!

When Evacuation is ordered:

- Put your plan in action, evacuate quickly.
- Take your emergency kit.

No safe place to go?

- Listen for Inland Shelter locations.
- Shelters may be non-congregate or congregate.
 - ◆ Non-congregate means dormitory/motel.
 - ◆ Congregate means school/church.
 - ◆ Shelters may not offer cots for sleeping.
- If you need transportation call 475-5655.

Make Plans Now That Don't Include a Shelter!

ReadyNC!



<https://www.readync.org/>

Plan. Prepare. Stay Informed.

Español



Plan

Discuss with your family what to do before, during and after an emergency. The more prepared you are, the better you will be.

MORE >



Prepare

Make an emergency supplies kit before a disaster with basic items your family may need in or after an emergency. Be sure everyone knows where the kit is.

MORE >



Stay Informed

Know the hazards where you live. Have a way to monitor severe weather and receive emergency alerts for your location.

MORE >

Get **ReadyNC**

Emergency Information

- COVID-19 →
- Hurricane Season during COVID-19 →
- Hurricane Guide →
- Flood Gauges - FIMAN →
- Road Conditions →
- Disaster Assistance →
- Power Outages →
- Evacuation Orders →
- Evacuation Routes →
- Shelters →
- Know Your Zone →
- Re-Entry Registration →
- Nuclear →

KNOW YOUR ZONE
KNOWYOURZONE.NC.GOV
Know Your Zone
North Carolina Coastal Evacuation Zones

Mobile Version

09:03

AA readync.org

READY NC

Get **ReadyNC**

Emergency Information

- Novel Coronavirus →
- Hurricane Guide →
- Flood Gauges - FIMAN →
- Road Conditions →
- Disaster Assistance →
- Power Outages →
- Evacuation Orders →

Open Shelters

Español

Emergency shelters are open at these locations:

No Open Shelters



Get **ReadyNC**

Need Help?



Check on your neighbor!

Does anyone need help?

**Special Medical
Needs Registry**



<https://lfp.darecountync.gov/Forms/SpecialNeeds>

Getting Official Information



Are you signed up for OBXAlerts? Do you have GOVERNMENT ALERTS turned on?

- Sign up with full profile at www.OBXAlerts.com
- For only countywide emergency notifications text **DareEmergencyAlerts** to 77295
- On your mobile device turn on GOVERNMENT ALERTS to receive IPAWS alerts!



What about Reentry?



Decision Driven by Public Safety.

- Starts recovery process
- Hazards may still exist
- Prohibitions & restriction may be in place

Stages Facilitate a Safe and Orderly Return.

- Priority One - Essential Personnel
- Priority Two - Permanent Residents & Critical Businesses
- Priority Three - Non-Resident Property Owners and Non-Critical Businesses
- Priority Four - General Public and Visitors

Permits issued online at: www.darenc.com/reentry



Ocean Hazards



Visit www.LovetheBeachRespecttheOcean.com



How deep will it get?



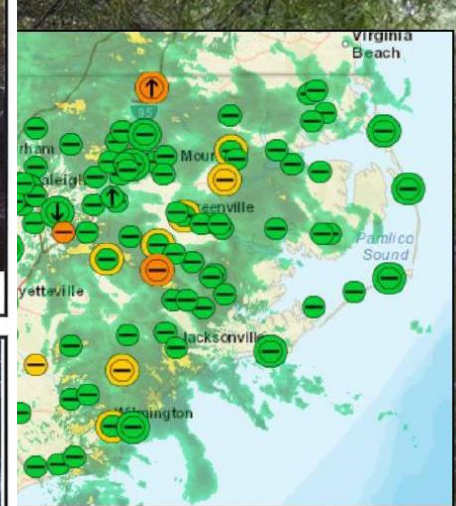
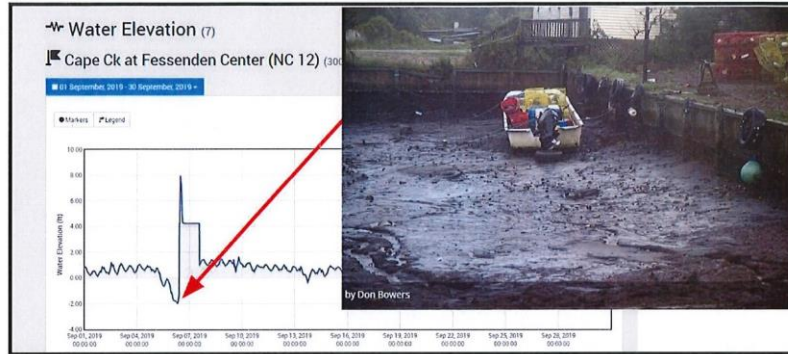
Real-time Flooding
Information

Go to
fiman.nc.gov

real-time data on stream, rainfall & water levels



Flood Inundation Mapping
and Alert Network



FAN Flood Inundation Mapping
and Alert Network

The images above show the surge changes both in pictures and from the Fessenden Center flood gauge.

How deep will it get?



Don't be Tom....

Be Debbie!



STORM SURGE is fast and dangerous **flooding** caused by hurricane winds.

The image shows a turbulent, greyish-green sea with white foam from breaking waves. The sky is overcast and grey. A semi-transparent dark grey box with a thin blue border is centered in the lower half of the frame, containing the text.

You Have a Spot, Get Your Shot!



Weekly Vaccine Data Dashboard

Data through Sunday, June 13, 2021

First Doses

22,374

Doses

60%

of Population

Fully Vaccinated

20,969

Individuals

57%

of Population

Data now includes all vaccinations provided to residents in Dare County.

Get Ready!



Run from **Water**. Hide from **Wind**.



STORM SURGE

is the greatest threat to life and property from a hurricane, regardless of wind speed.



www.DareNC.com

**KNOW
BEFORE
YOU GO**

CHECK LOCAL BEACH CONDITIONS FROM NATIONAL WEATHER SERVICE AT WEATHER.GOV/BEACH/MHX

**LOVE THE BEACH
RESPECT THE OCEAN**
#LOVETHEBEACHRESPECTTHEOCEAN



OBX ALERTS



EMERGENCY ALERTS | TOWN AND COUNTY NOTIFICATIONS