

# Climate Review for the month of February 2013

Presented by:  
National Weather Service  
Newport/Morehead City

# Summary

February was a somewhat cooler and wetter month as an upper level trough continued to dominate the region. With a series of cold fronts during of the month and several low pressure systems forming, our area received a great amount of precipitation, including a snow event on February 17. Precipitation ranged from 4 to 7.5 inches with the greatest amounts in the coastal counties. In regards to the snow event, the area received a trace to 3 inches with the amount in Pitt county. This resulted for the US Drought Monitor to decrease the D0 (abnormally dry) drought designator to the majority of the coverage area.

The average max temperature ranged in the low 50s to low 60s as the averaged low temperatures were in the low 30s to low 40s with the coldest temps dropping into the low 20s.

*DISCLAIMER : The climate data provided are preliminary and have not undergone final quality control by NCDC. Therefore...this data is subject to revision.*

# Average Temperatures within our CWA

	Avg_Max	Avg_Max Normal	Avg_Min	Avg_Min Normal
Beaufort	55.8	na	39.3	na
Cape Hatteras	54.5	54.6	41.3	39.0
New Bern	57.2	57.4	36.2	35.5
Greenville	53.4	55.2	33.2	33.5
Kinston AG	56.8	59.9	36.0	34.5
Williamston	52.4	55.0	33.6	33.6
Plymouth	53.3	57.6	33.8	34.4
Bayboro	56.9	58.9	35.9	35.1

Average temperatures were 1-2 degrees below normal except for Beaufort and Cape Hatteras.

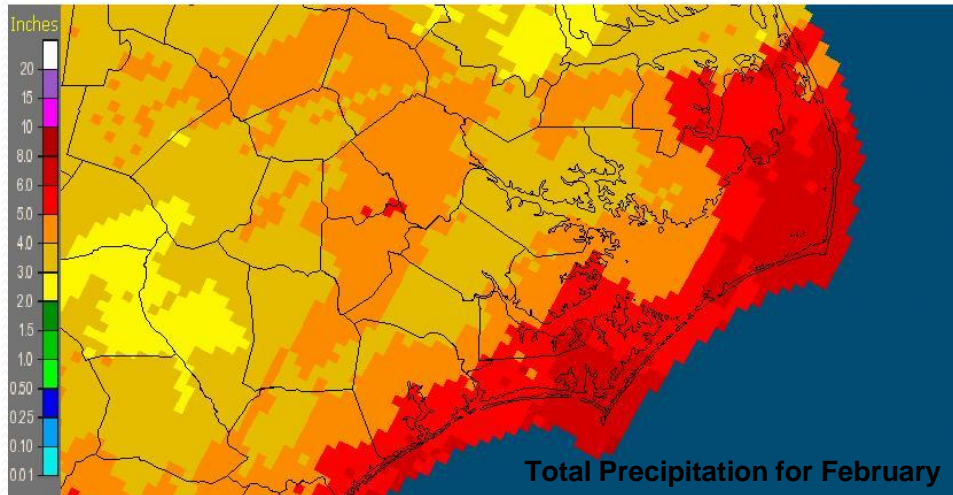
# Max and Min Temperature within our CWA

	MAX	MIN
Beaufort	68	24
Cape Hatteras	65	30
New Bern	70	20
Greenville	66	18
Kinston AG	66	20
Williamston	64	21
Plymouth	64	18
Bayboro	70	25

# February's Rain versus Normal

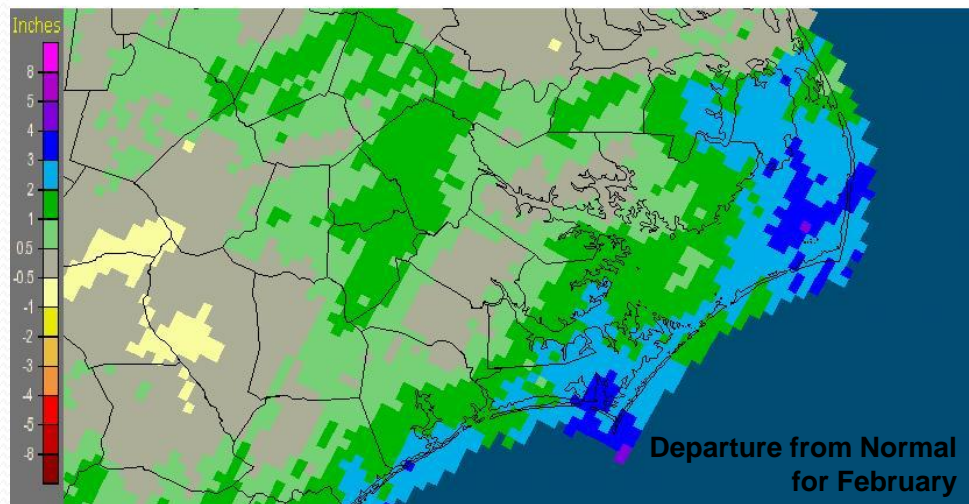
	Precipitation (inches)	Normal	Differences
Beaufort	7.10	na	na
Cape Hatteras	7.56	3.94	3.62
New Bern	4.31	3.8	0.51
Greenville	4.52	3.45	1.07
Kinston AG	5.48	3.53	1.95
Williamston	4.08	3.34	0.74
Plymouth	4.76	3.45	1.31
Bayboro	5.19	3.25	1.94

Newport/Morehead City, NC (MHX): February, 2013 Monthly Observed Precipitation  
Valid at 3/1/2013 1200 UTC- Created 3/3/13 21:37 UTC



Total Precipitation for February

Newport/Morehead City, NC (MHX): February, 2013 Monthly Departure from Normal Precipitation  
Valid at 3/1/2013 1200 UTC- Created 3/3/13 21:39 UTC



Departure from Normal for February

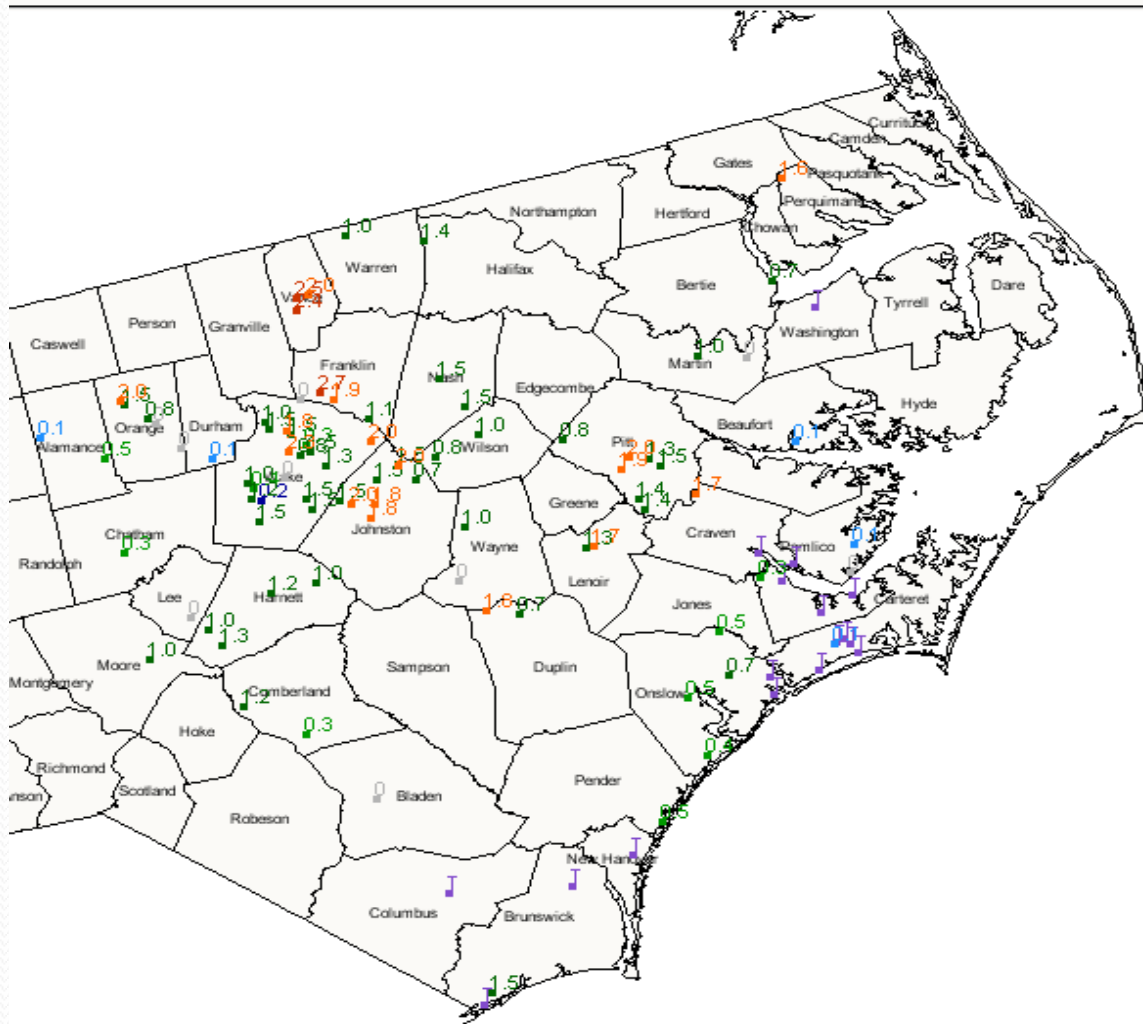
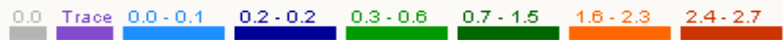
Above average month for precipitation across our area with the highest precipitation along the coastal counties.

# February 17 Snowfall Event

Map Type	Map Location	Date	Colors
New Snow	North Carolina	Eastern North Carolina	2/17/2013

Daily Snow (inches x.x), for the 24 hour period ending ~7:00 am

Eastern North Carolina, North Carolina 2/17/2013

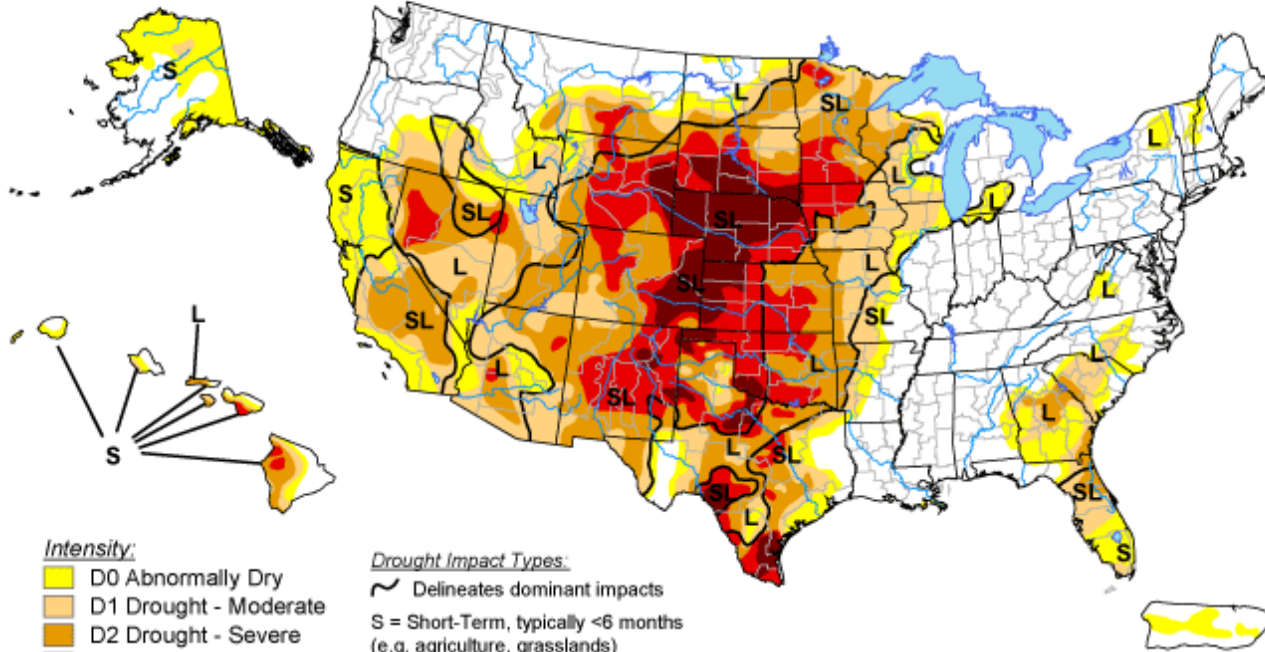




# U.S. Drought Monitor

March 5, 2013

Valid 7 a.m. EST



**Intensity:**

- D0 Abnormally Dry
- D1 Drought - Moderate
- D2 Drought - Severe
- D3 Drought - Extreme
- D4 Drought - Exceptional

**Drought Impact Types:**

- Delineates dominant impacts
- S = Short-Term, typically <6 months (e.g. agriculture, grasslands)
- L = Long-Term, typically >6 months (e.g. hydrology, ecology)

The Drought Monitor focuses on broad-scale conditions. Local conditions may vary. See accompanying text summary for forecast statements.

<http://droughtmonitor.unl.edu/>



Released Thursday, March 7, 2013

Author: Matthew Rosencrans, NOAA/NWS/NCEP/CPC

Before

Now

