

Climate Review for the month of January 2013

Presented by:
National Weather Service
Newport/Morehead City

Summary

January is known to be our coldest month for Eastern North Carolina, but high pressure at the surface and strong upper level ridge dominated the region making it quite opposite from normal. The average max temperature was in the upper 50s to low 60s with the highest temperatures occurring during January 12-17. Towards the end of the month, when an upper level trough became the dominant feature, the area finally experienced the coldest temperature for the winter season with temperatures ranging in the upper teens to upper 20s. Overall, the average low temperatures ranged in mid 30s to low 40s.

Several cold fronts crossed the area during the month along with a low pressure system that created a wintry mix across Eastern North Carolina. January's rainfall typically ranges between 4 to 6 inches, but January 2013 ranged between 1 to 3.50 inches. This resulted in the expansion of the US Drought Monitor D0 (abnormally dry) drought designator for the entire coverage area.

DISCLAIMER : The climate data provided are preliminary and have not undergone final quality control by NCDC. Therefore...this data is subject to revision.

Average Temperatures within our CWA

	Avg_Max	Avg_Max Normal	Avg_Min	Avg_Min Normal
Beaufort	58.3	na	40.6	na
Cape Hatteras	55.7	53.6	42.9	38.6
New Bern	59.2	54.4	38.2	33.9
Greenville	55.8	51.6	35.2	31.3
Kinston AG	58.0	55.9	39.1	33.2
Williamston	53.7	52.0	35.3	31.9
Plymouth	54.5	54.0	35.5	33.1
Bayboro	58.3	55.6	39.0	33.8

Average temperatures were 1 to 5 degrees above normal.

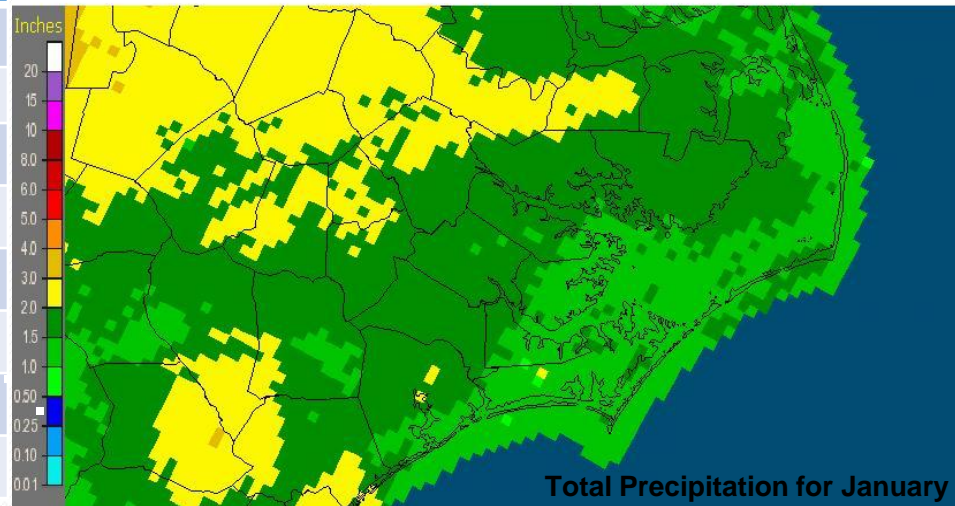
Max and Min Temperature within our CWA

	MAX	MIN
Beaufort	72	23
Cape Hatteras	71	28
New Bern	79	22
Greenville	78	18
Kinston AG	77	20
Williamston	77	21
Plymouth	76	17
Bayboro	77	27

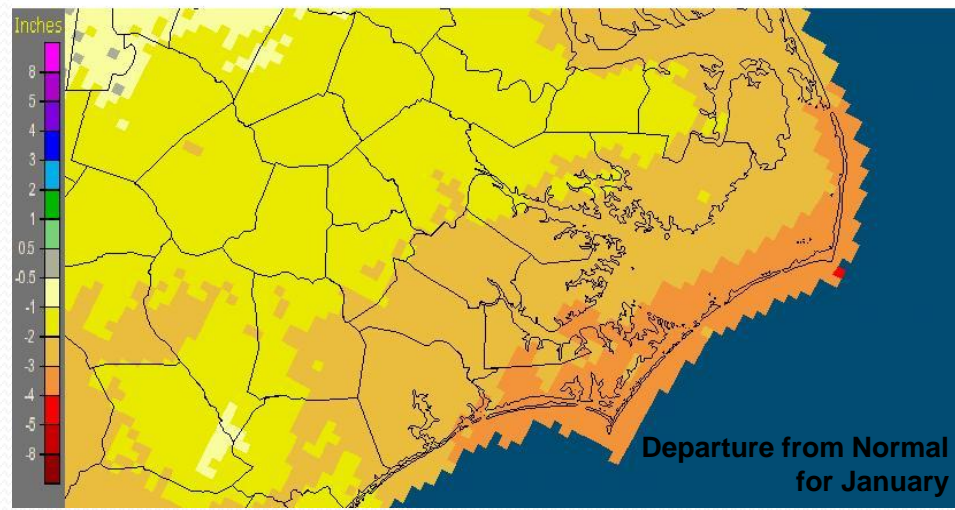
January's Rain versus Normal

	Precipitation (inches)	Normal	Differences
Beaufort	1.2	na	na
Cape Hatteras	2.17	5.84	-3.67
New Bern	1.83	4.77	-2.94
Greenville	2.5	4.43	-1.93
Kinston AG	3.49	4.3	-0.81
Williamston	2.41	4.36	-1.95
Plymouth	1.91	4.54	-2.63
Bayboro	2.58	4.52	-1.94

Newport/Morehead City, NC (MHX): January, 2013 Monthly Observed Precipitation
Valid at 2/1/2013 1200 UTC- Created 2/3/13 21:37 UTC



Newport/Morehead City, NC (MHX): January, 2013 Monthly Departure from Normal Precipitation
Valid at 2/1/2013 1200 UTC- Created 2/3/13 21:39 UTC

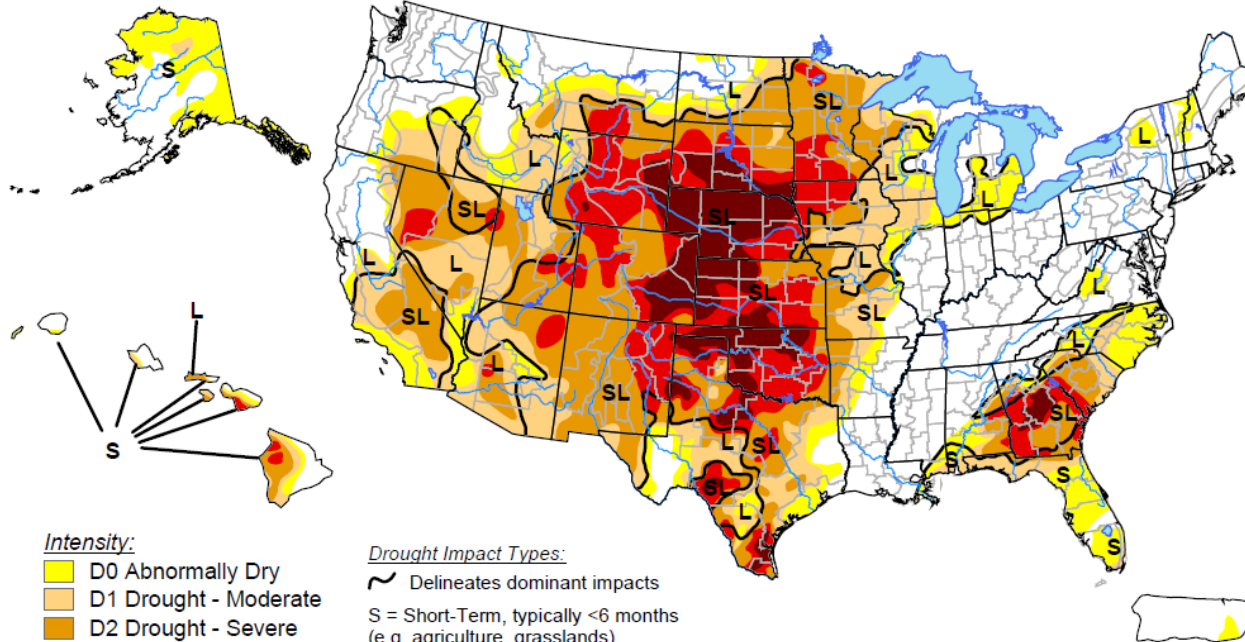


Below normal precipitation fell across Eastern North Carolina with an inch to 3.50 inches of rain. The most amount of precipitation occurred in the extreme Northwest of our coverage area.

U.S. Drought Monitor

February 5, 2013

Valid 7 a.m. EST



Intensity:

- D0 Abnormally Dry
- D1 Drought - Moderate
- D2 Drought - Severe
- D3 Drought - Extreme
- D4 Drought - Exceptional

Drought Impact Types:

- Delineates dominant impacts
- S = Short-Term, typically <6 months (e.g. agriculture, grasslands)
- L = Long-Term, typically >6 months (e.g. hydrology, ecology)

The Drought Monitor focuses on broad-scale conditions. Local conditions may vary. See accompanying text summary for forecast statements.

<http://droughtmonitor.unl.edu/>

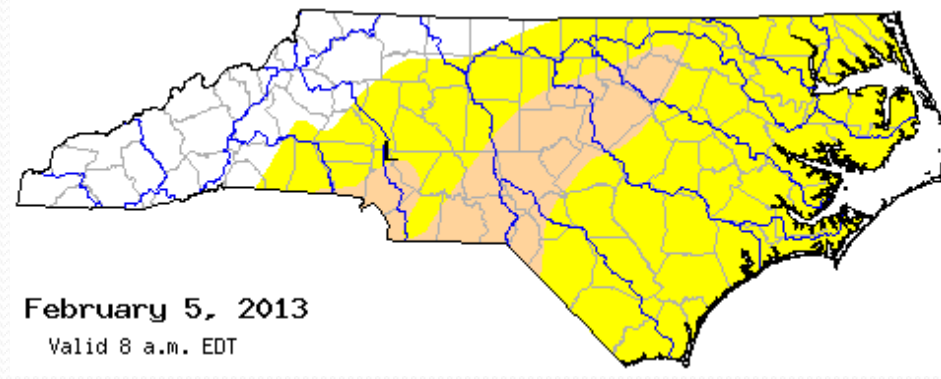
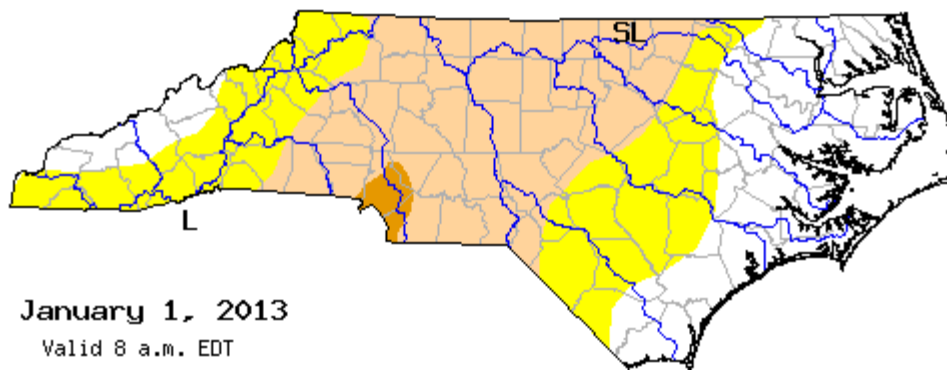


Released Thursday, February 7, 2013

Author: Michael Brewer/L. Love-Brotak, NOAA/NESDIS/NCDC

Before

Now



January 1, 2013

Valid 8 a.m. EDT

February 5, 2013

Valid 8 a.m. EDT