

# Climate Review for the month of November 2011

Presented by:  
BelMel Publishing

# Summary

November was a warm and slightly dry month. With High Pressure dominating the region, maximum temperatures averaged in the upper 60s and average lows ranging in the lower 40s to the lower 50s across the CWA. Overall, the CWA was near normal to above normal for average temperature for the month. Most of our CWA continued to be below normal with precipitation due to the few cold fronts that moved across or near to our area. Cape Hatteras broke another 24-hr precipitation total record of 1.93 inches on November 17 (previous record of 1.13 inches back in 1994).

La Niña conditions continue to increase as the Niño index in November was  $-1.1^{\circ}\text{C}$  for the Niño 3.4 region which according to CPC this is considered to be a moderate La Niña. Both the Northerly and Southerly Jets (200mb) have taken shape of a typical La Niña pattern. Currently, our CWA has been upgraded to a D0 (Abnormally Dry) and with the dry conditions expected to continue.

*DISCLAIMER from Bel: The climate data provided are preliminary and have not undergone final quality control by NCDC. Therefore...this data is subject to revision.*

# Average Temperatures within our CWA

	Avg_ Max	Avg_ Max Normal	Avg_ Min	Avg_ Min Normal
Beaufort	67.3	na	48.5	na
Cape Hatteras	65.1	64.8	51.7	50.3
New Bern	69.1	66.0	44.7	43.7
Greenville	68.3	64.6	44.0	40.7
Kinston AG	69.6	68.7	46.1	42.9
Williamston	68.0	64.3	44.0	41.2
Plymouth	67.8	66.0	43.8	42.6
Aurora	66.8	65.4	47.0	43.2
Bayboro	68.1	67.5	43.9	43.2

Overall, the CWA was 1 to 4 degrees above normal on average temperature for the month.

# Max and Min Temperature within our CWA

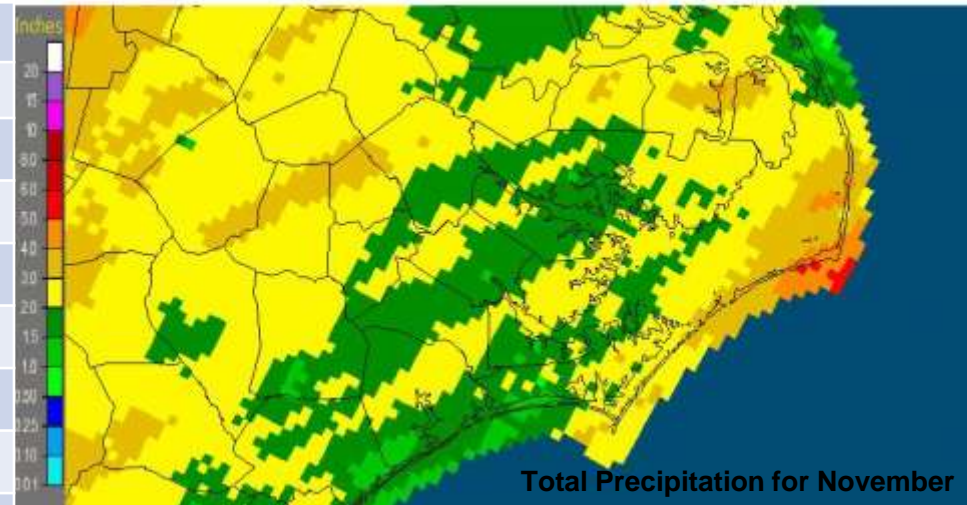
	MAX	MIN
Beaufort	76	33
Cape Hatteras	74	38
New Bern	81	29
Greenville	83	29
Kinston AG	82	31
Williamston	81	30
Plymouth	79	28
Aurora	80	38
Bayboro	79	32

Warmest temperatures occurred around mid-November while some of the coldest nights were 12<sup>th</sup> or 18<sup>th</sup> of November.

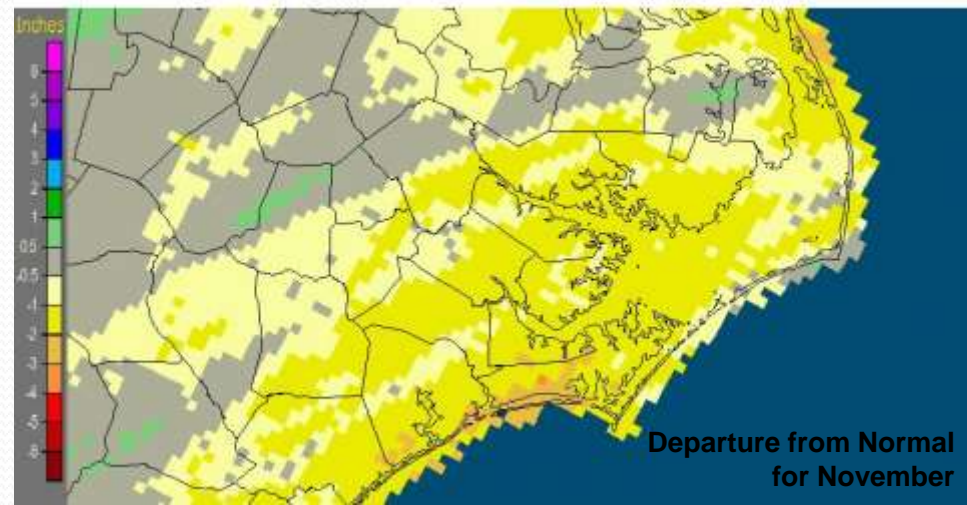
# November's Rain versus Normal

	Precipitation (inches)	Normal	Differences
Beaufort	2.36	na	na
Cape Hatteras	6.08	4.95	1.13
New Bern	2.35	3.4	-1.05
Greenville	3.67	3.12	0.55
Kinston AG	3.00	3.08	-0.08
Williamston	3.19	3.08	0.11
Plymouth	3.64	3.53	0.11
Aurora*	1.65	3.08	-1.43*
Bayboro	3.28	3.78	-0.5

Newport/Morehead City, NC (MHX): November, 2011 Monthly Observed Precipitation  
Valid at 12/1/2011 1200 UTC- Created 12/3/11 21:38 UTC



Newport/Morehead City, NC (MHX): November, 2011 Monthly Departure from Normal Precipitation  
Valid at 12/1/2011 1200 UTC- Created 12/3/11 21:40 UTC



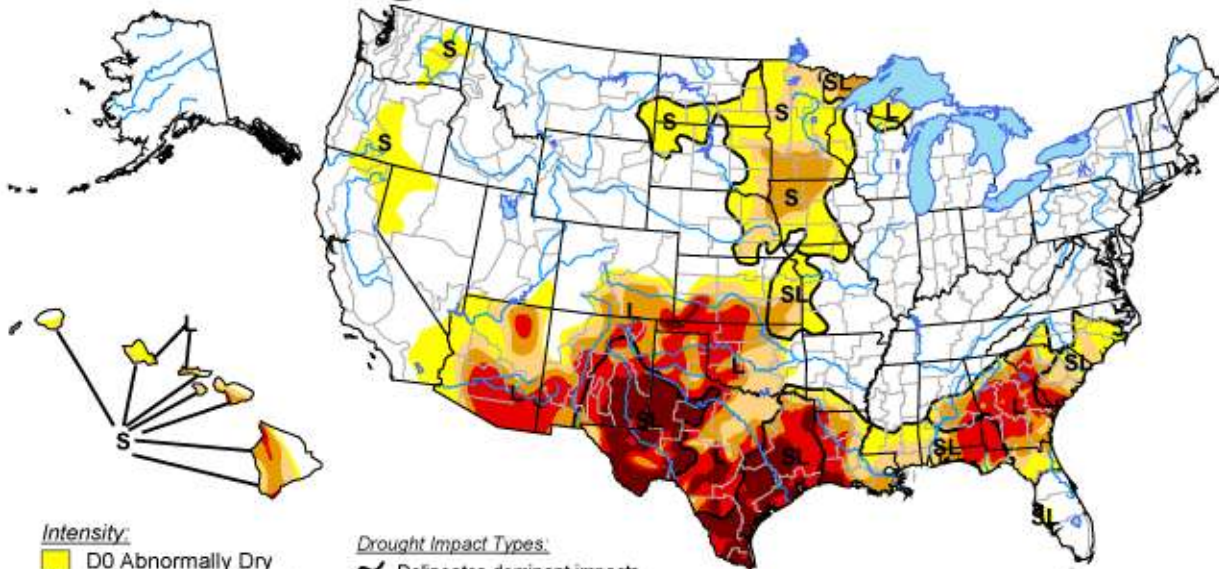
With some of our countries that were adjacent to the sounds or southern coastal waters mainly saw below normal precipitation. While the rest of the CWA was near or above normal, especially in the Outer Banks area.

\* means incomplete record for the month of November

# U.S. Drought Monitor

December 6, 2011

Valid 7 a.m. EST



Intensity:

- D0 Abnormally Dry
- D1 Drought - Moderate
- D2 Drought - Severe
- D3 Drought - Extreme
- D4 Drought - Exceptional

Drought Impact Types:

- Delineates dominant impacts
- S = Short-Term, typically <6 months (e.g. agriculture, grasslands)
- L = Long-Term, typically >6 months (e.g. hydrology, ecology)

The Drought Monitor focuses on broad-scale conditions. Local conditions may vary. See accompanying text summary for forecast statements.

<http://droughtmonitor.unl.edu/>

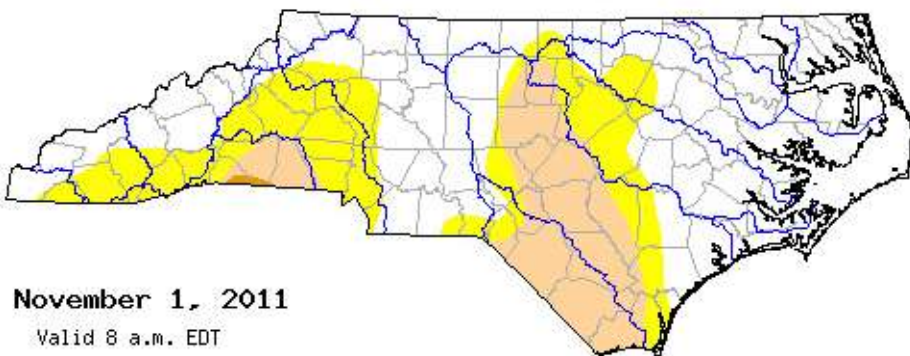


Released Thursday, December 8, 2011

Author: David Miskus, NOAA/NWS/NCEP/CPC

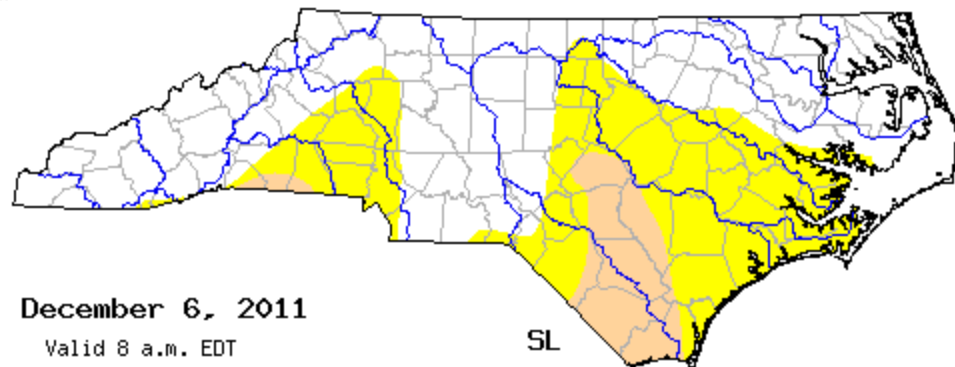
Before

Now



November 1, 2011

Valid 8 a.m. EDT



December 6, 2011

Valid 8 a.m. EDT

SL