

Climate Review for the month of September 2013

Presented by:
National Weather Service
Newport/Morehead City

Summary

The month of September continued with an upper level trough dominating the region which resulted in cooler temperatures, but dry conditions across Eastern North Carolina. Average max temperatures ranged in the upper 70s to mid 80s and average lows were in the upper 50s to mid 60s. Some locations within our CWA ranked in the top 10 coldest average temperatures for September like Bayboro and Ocracoke 5th coldest and Williamston 7th coldest.

Generally, the area received 2.50 to 6 inches of rain in September. Typically, most of the rain during the month of September is usually from tropical systems. With the lack of tropical systems affecting the area, most locations were 1 to 3 inches below normal. Due to the lack of rain, some coastal counties have been put into a D0 (Abnormally Dry).

DISCLAIMER : The climate data provided are preliminary and have not undergone final quality control by NCDC. Therefore...this data is subject to revision.

Average Temperatures within our CWA

	Avg_Max	Avg_Max Normal	Avg_Min	Avg_Min Normal
Beaufort	80.3	na	65.1	na
Cape Hatteras	81.1	79.9	67.5	69.0
New Bern	83.1	82.9	64.0	64.9
Greenville	82.1	82.9	60.4	62.9
Kinston AG	82.4	84.4	61.3	63.6
Williamston	81.5	81.8	59.4	61.1
Plymouth	81.2	82.7	60.3	62.9
Bayboro	82.4	83.2	60.2	63.9

Average temperatures were up to 2 degrees below normal.

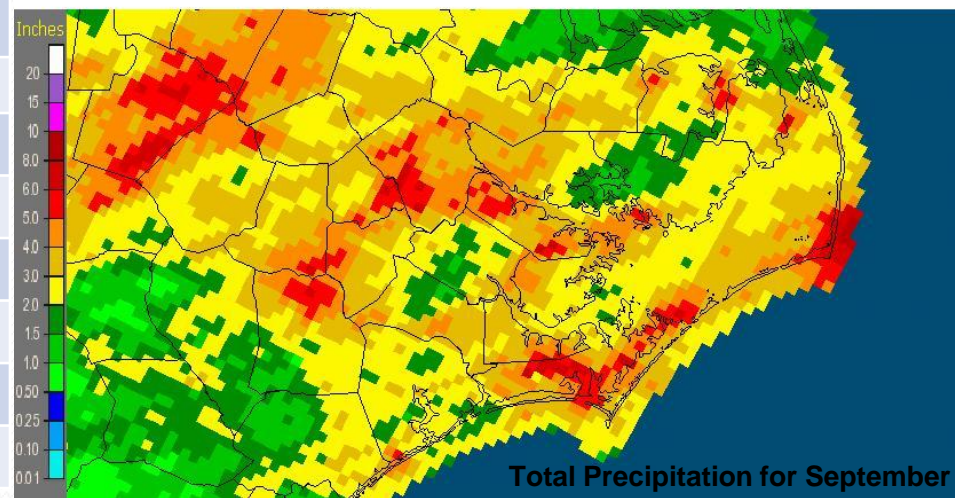
Max and Min Temperature within our CWA

	MAX	MIN
Beaufort	86	52
Cape Hatteras	89	52
New Bern	93	53
Greenville	91	51
Kinston AG	91	51
Williamston	89	49
Plymouth	90	46
Bayboro	91	49

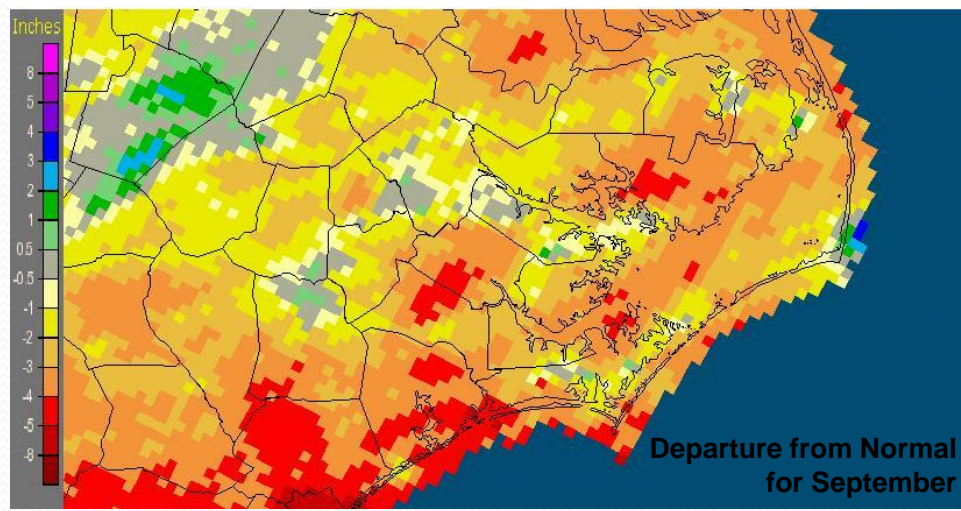
September's Rain versus Normal

	Precipitation (inches)	Normal	Differences
Beaufort	5.92	na	na
Cape Hatteras	4.83	6.25	-1.42
New Bern	3.25	5.89	-2.64
Greenville	4.13	5.83	-1.7
Kinston AG	5.69	5.71	-0.02
Williamston	2.58	6.07	-3.49
Plymouth	2.81	5.39	-2.58
Bayboro	4.23	5.88	-1.65

Newport/Morehead City, NC (MHX): September, 2013 Monthly Observed Precipitation
Valid at 10/1/2013 1200 UTC- Created 10/3/13 21:36 UTC



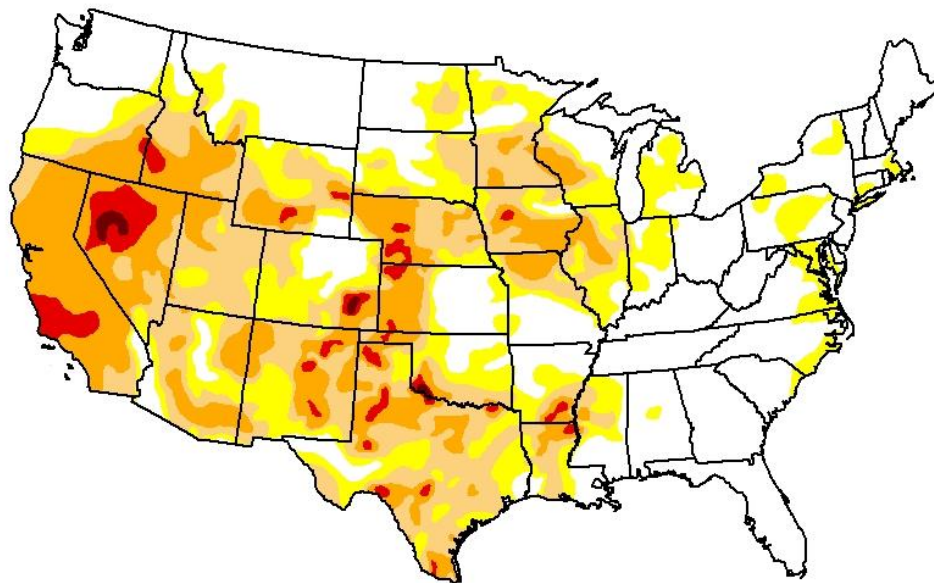
Newport/Morehead City, NC (MHX): September, 2013 Monthly Departure from Normal Precipitation
Valid at 10/1/2013 1200 UTC- Created 10/3/13 21:38 UTC



Rainfall amounts varied throughout the eastern NC. Overall, 2.5 to 6 inches has fallen across the coverage area.

U.S. Drought Monitor CONUS

October 1, 2013
(Released Thursday, Oct. 3, 2013)
Valid 7 a.m. EDT



Intensity:

-  D0 Abnormally Dry
-  D1 Moderate Drought
-  D2 Severe Drought
-  D3 Extreme Drought
-  D4 Exceptional Drought

The Drought Monitor focuses on broad-scale conditions. Local conditions may vary. See accompanying text summary for forecast statements.

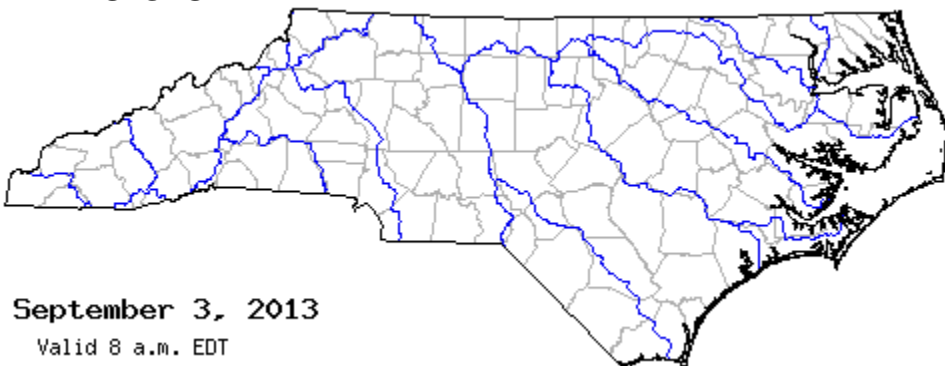
Author:

David Miskus
NOAA/NWS/NCEP/CPC



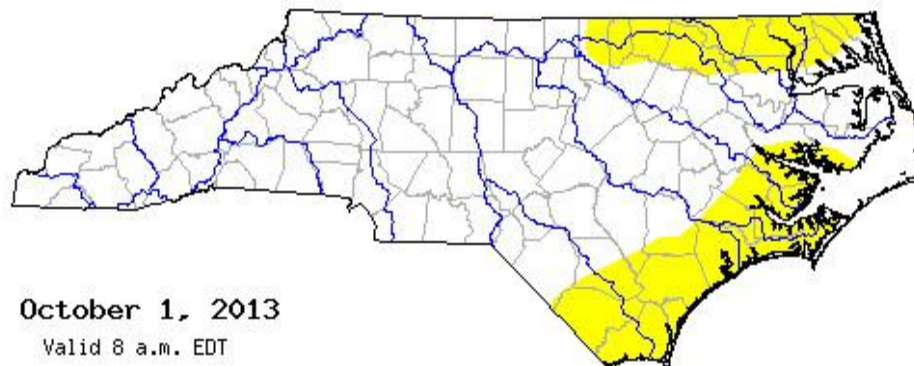
<http://droughtmonitor.unl.edu/>

Before



September 3, 2013
Valid 8 a.m. EDT

Now



October 1, 2013
Valid 8 a.m. EDT

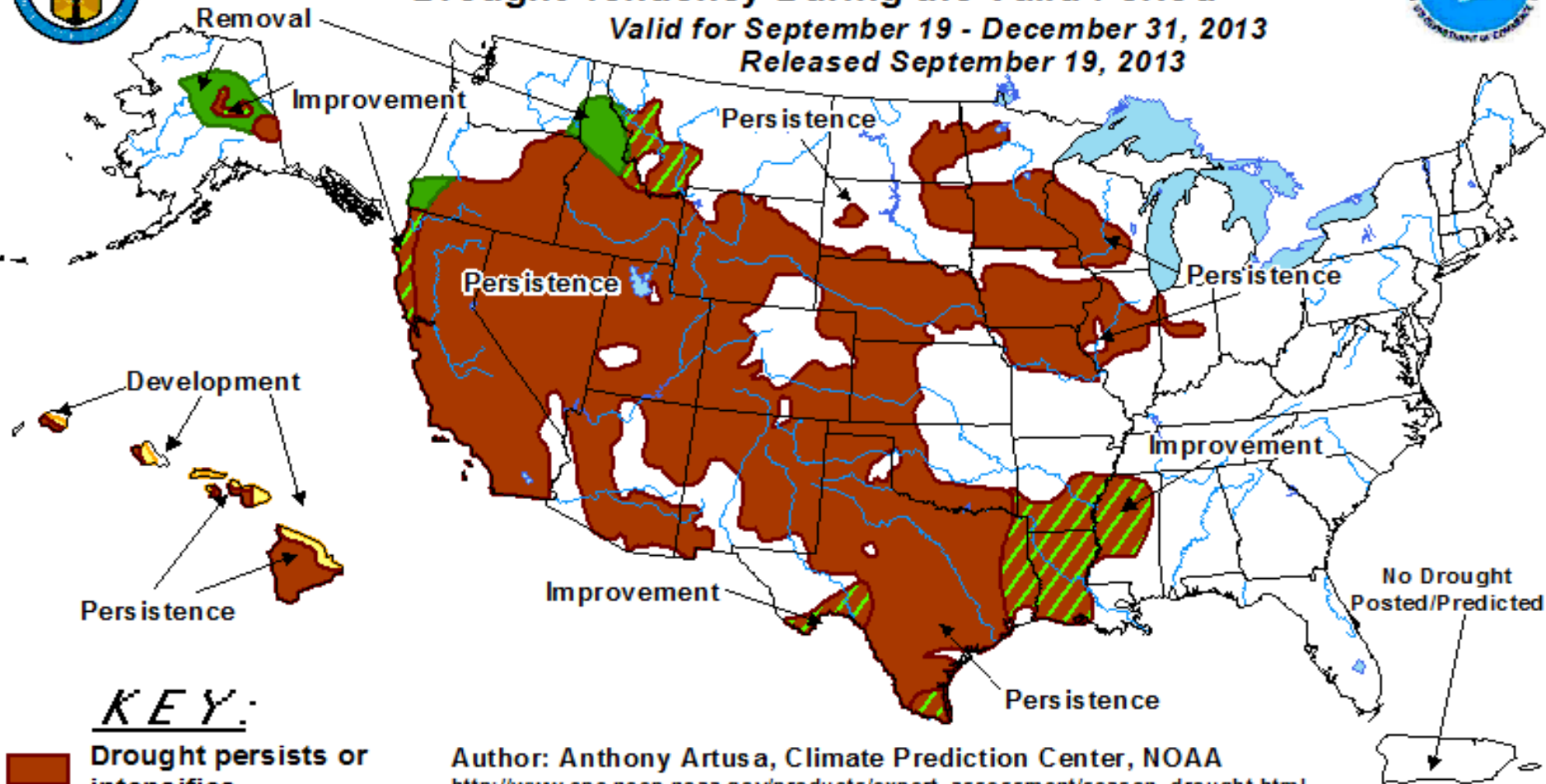


U.S. Seasonal Drought Outlook

Drought Tendency During the Valid Period

Valid for September 19 - December 31, 2013

Released September 19, 2013



Author: Anthony Artusa, Climate Prediction Center, NOAA

http://www.cpc.ncep.noaa.gov/products/expert_assessment/season_drought.html

Depicts large-scale trends based on subjectively derived probabilities guided by short- and long-range statistical and dynamical forecasts. Short-term events – such as individual storms – cannot be accurately forecast more than a few days in advance. Use caution for applications – such as crops – that can be affected by such events. "Ongoing" drought areas are approximated from the Drought Monitor (D1 to D4 intensity). For weekly drought updates, see the latest U.S. Drought Monitor.

NOTE: The Green and Brown hatched areas imply at least a 1-category improvement in the Drought Monitor intensity levels by the end of the period although drought will remain. The Green areas imply drought removal by the end of the period (D0 or none)