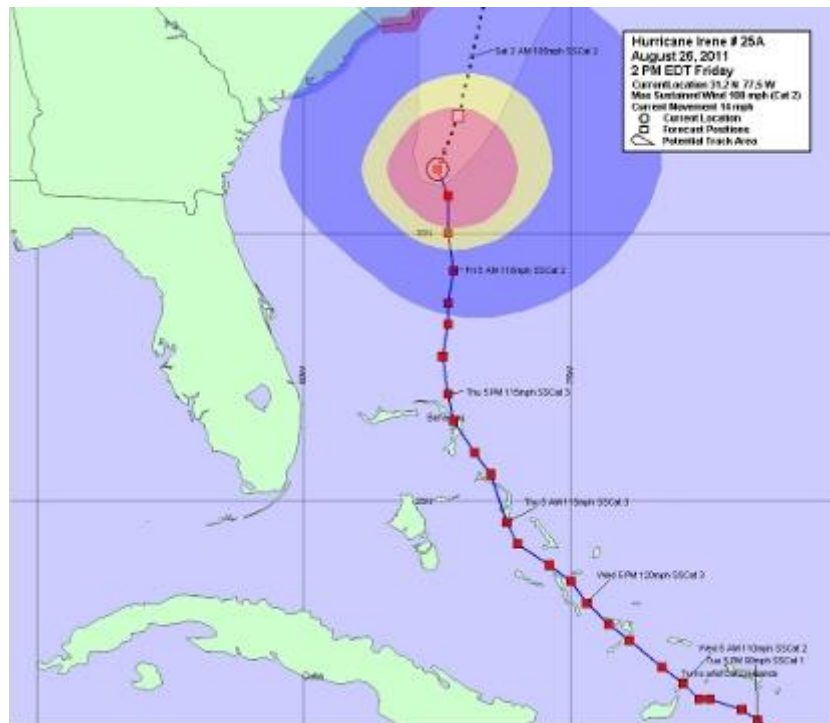


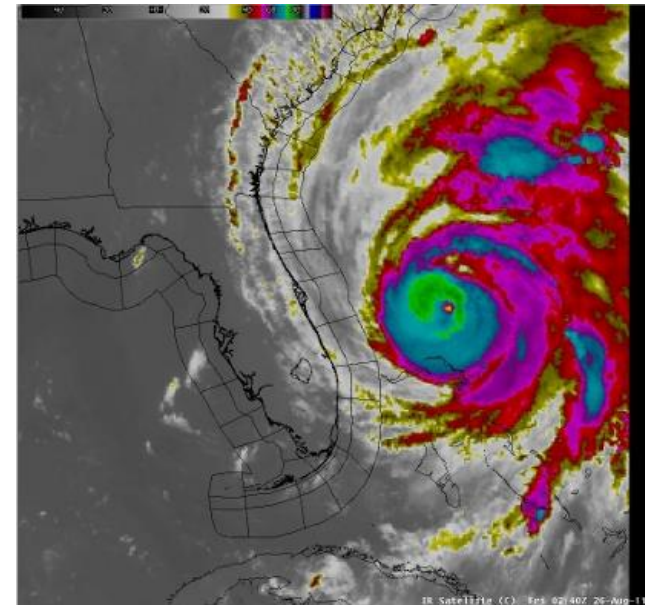
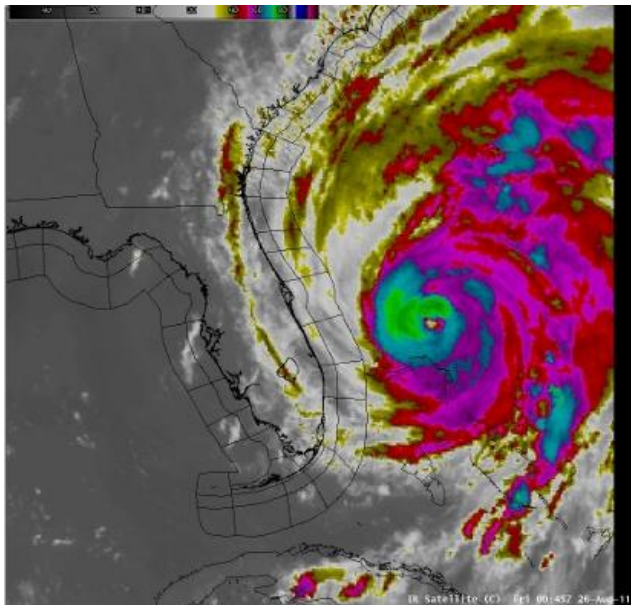
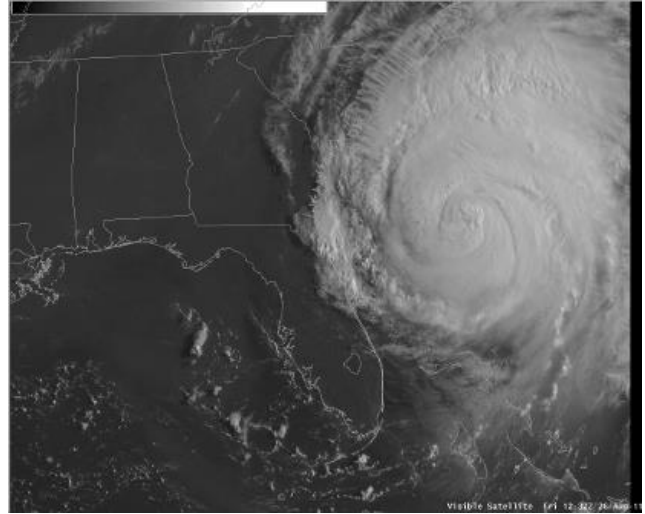
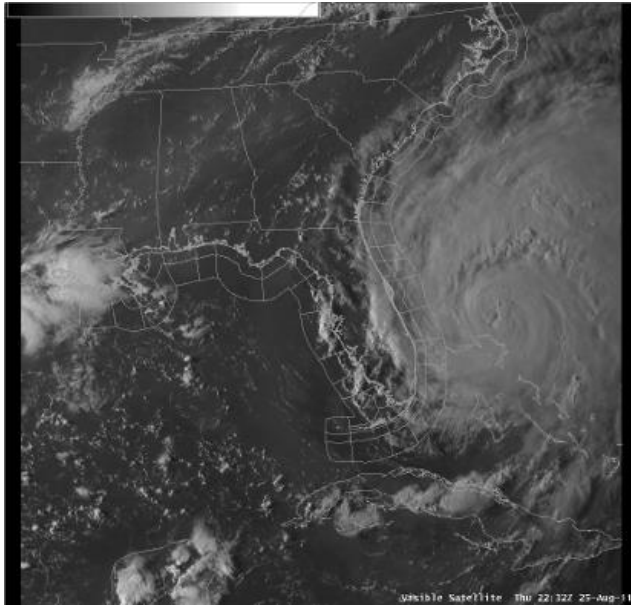
# Hurricane Irene passes offshore from East Central Florida

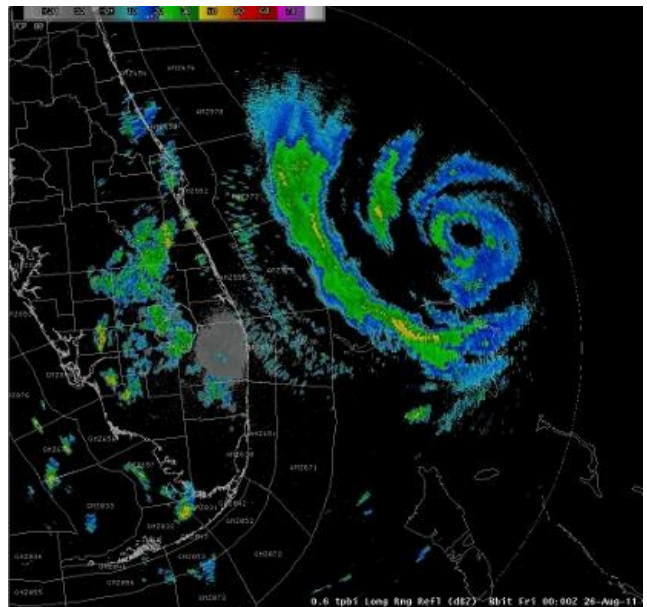
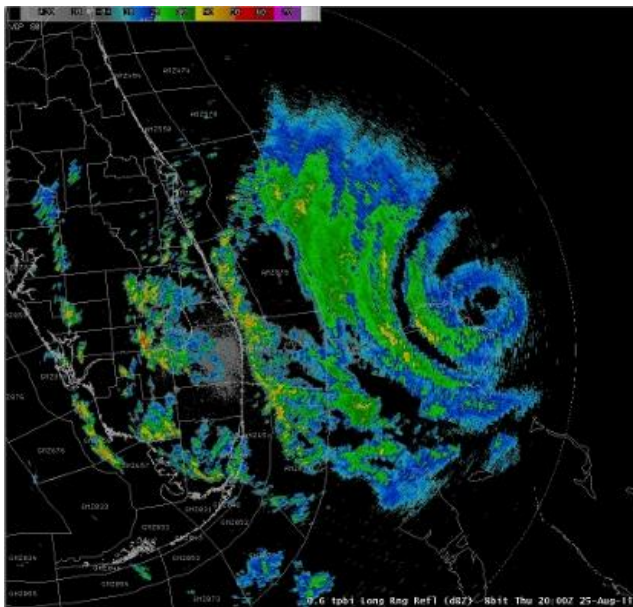
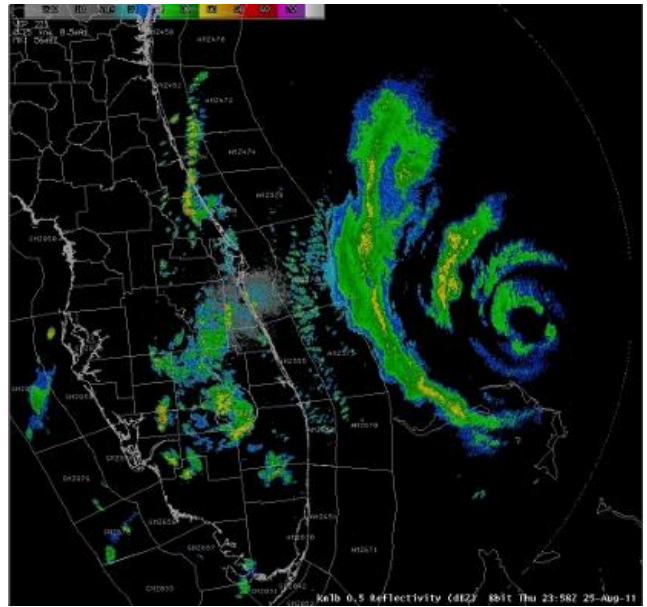
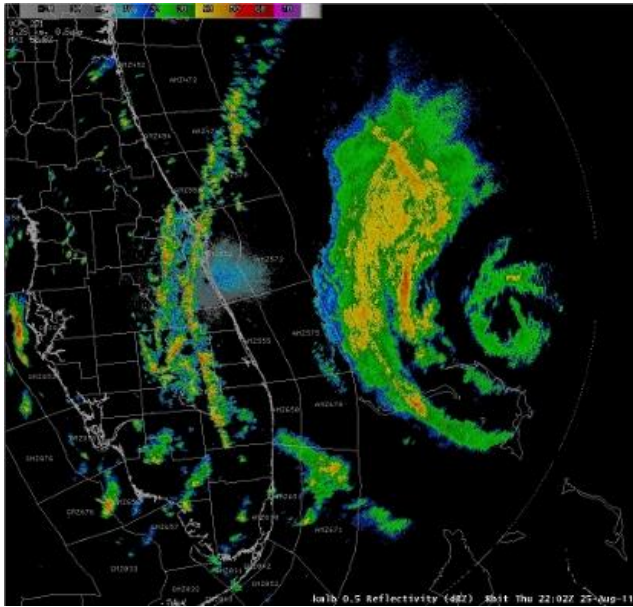
August 25-26, 2011

Hurricane Irene passed 190 to 240 miles offshore from East Central Florida and brought tropical storm force winds to the offshore Atlantic waters beyond 20 nautical miles and some rain squalls with tropical storm gusts to coastal and inland areas. Total rainfall amounts ranged from around a half inch to around 1.75 inches in a few spots near the east coast where outer rainbands were more persistent along the Treasure coast. Seas across the Atlantic peaked at 22 feet at Buoy 41009 and 32 feet at Buoy 41010 on the evening of August 25th. Tropical Storm Watches and Warnings were in effect for the East Central Florida Atlantic waters for this event but no Tropical Storm Watches or Warnings were in effect for land areas.



# Visible, IR and Radar Reflectivity images below





## Peak Wind Gust Reports from Irene

Station	Peak Gust (kts)	Peak Gust (mph)	Direction	Date	Time (EDT)
Daytona Beach	38	44	30	25-Aug	19:47
New Smyrna Beach	36	41	40	25-Aug	19:47
Ormond Beach	28	32		25-Aug	14:47
Sanford	30	35	50	25-Aug	16:54
Orlando International	34	39	40	25-Aug	18:25
Orlando Executive	37	43	60	25-Aug	13:28
Leesburg	30	35	30	25-Aug	17:10
Kissimmee	25	29	50	25-Aug	18:50
Melbourne	34	39	20	25-Aug	14:16

Vero Beach	35	40	30	25-Aug	12:47
Fort Pierce	30	35	70	25-Aug	16:32
Stuart	32	37	70	25-Aug	10:05
Okeechobee	38	44	20	25-Aug	15:15
Tower 3	47	54		26-Aug	3:15
Buoy 41009	39	45	20	25-Aug	21:50
Buoy 41010	64	74	360	26-Aug	2:50

### Maximum Sustained 2-min Winds from Irene

Station	Maximum 2 Minute (kts)	Maximum 2 Minute (mph)	Direction	Date	Time (EDT)
Daytona Beach	30	35	40	25-Aug	19:47
New Smyrna Beach	25	29	40	25-Aug	19:47
Ormond Beach	15	17	40	25-Aug	17:50
Sanford	21	24	20	25-Aug	17:29
Orlando International	26	30	60	25-Aug	18:27
Orlando Executive	31	36	70	25-Aug	13:29
Leesburg	22	25	60	25-Aug	14:32
Kissimmee	20	23	60	25-Aug	13:55
Melbourne	27	31	30	25-Aug	13:00
Vero Beach	27	31	40	25-Aug	12:48
Fort Pierce	20	23	100	25-Aug	11:22
Stuart	21	24	70	25-Aug	10:05
Okeechobee	15	17	360	25-Aug	14:55
Buoy 41009	31	36	20	25-Aug	21:50
Buoy 41010	49	56	360	26-Aug	2:20

### Minimum Pressure as Irene passed Offshore

Station	Minimum Pressure (inHg)	Minimum Pressure (mb)
Daytona Beach	29.64	1003.73
New Smyrna Beach	29.66	1004.40
Ormond Beach	29.68	1005.08
Sanford	29.65	1004.06
Orlando International	29.66	1004.40
Orlando Executive	29.68	1005.08
Leesburg	29.70	1005.76
Kissimmee	29.72	1006.44
Melbourne	29.61	1002.71
Vero Beach	29.61	1002.71
Fort Pierce	29.60	1002.37
Stuart	29.61	1002.71
Okeechobee	29.66	1004.40

Buoy 41009	29.53	1000.10
Buoy 41010	29.00	982.20

## Peak Sea Heights

Station	Peak Seas (ft)	Date/Time (EDT)
Buoy 41009	22	25/21:50
Buoy 41010	32	25/23:20
Buoy 41113	10	26/0:51
Buoy 41114	11	26/3:16

## Rainfall from ASOS sites

Station ID	Station	Rainfall Aug 25-26
KMCO	Orlando Intl	0.09
KORL	Orlando Exec	0.51
KSFB	Sanford	0.06
KDAB	Daytona Beach	0.42
KMLB	Melbourne	0.10
KLEE	Leesburg	0.50
KFPR	Fort Pierce	1.13
KVRB	Vero Beach	0.34

COCORAHS PRECIPITATION SUMMARY  
 NATIONAL WEATHER SERVICE MELBOURNE FL  
 1030 AM EDT FRI AUG 26 2011

COCORAHS PRECIPITATION REPORTS  
 THESE REPORTS ARE CONSIDERED SUPPLEMENTAL AND UNOFFICIAL  
 VALUES ARE FOR THE PREVIOUS 24 HOURS ENDING AROUND 7 AM LOCAL TIME

.B MLB 0826 E DH07/PP/SF/SD/SW

:

:COCORAHS PRECIPITATION REPORTS IN EAST CENTRAL FLORIDA

:

:	:	PCPN	SNOW FALL	SNOW DEPTH	WATER EQUIV
---	---	------	--------------	---------------	----------------

:

FLBV01	:	PALM BAY 2.6 SSE	*	:	0.22 / MM / MM / MM
FLBV02	:	PALM SHORES 1.4 W	*	:	0.40 / MM / MM / MM
FLBV03	:	MIMS 7.5 NNW	*	:	1.12 / MM / MM / MM
FLBV05	:	PALM BAY 3.1 NNW	*	:	0.05 / MM / MM / MM
FLBV06	:	MELBOURNE 1.1 N	*	:	0.05 / MM / MM / MM
FLBV07	:	MICCO 4.5 NW	*	:	0.52 / MM / MM / MM
FLBV12	:	CAPE CANAVERAL 0.6 ESE	*	:	0.63 / MM / MM / MM
FLBV13	:	ROCKLEDGE 1.1 WSW	*	:	0.36 / MM / MM / MM
FLBV16	:	PALM SHORES 2.9 NW	*	:	0.27 / MM / MM / MM
FLBV20	:	PALM SHORES 4.3 NNW	*	:	0.41 / MM / MM / MM
FLBV23	:	COCOA 2.6 WNW	*	:	1.23 / MM / MM / MM
FLBV28	:	MICCO 1.3 NW	*	:	1.00 / MM / MM / MM
FLBV38	:	TITUSVILLE 3.5 NW	*	:	0.97 / MM / MM / MM
FLIR04	:	SEBASTIAN 1.1 NE	*	:	0.55 / MM / MM / MM
FLIR06	:	VERO BEACH 2.4 W	*	:	0.52 / MM / MM / MM
FLIR08	:	VERO BEACH 11.4 NW	*	:	0.26 / MM / MM / MM
FLIR13	:	VERO BEACH 2.1 ENE	*	:	0.45 / MM / MM / MM

FLIR15	:	VERO BEACH 1.5 WSW	*	:	0.53 /	MM /	MM /	MM
FLIR19	:	SEBASTIAN 2.0 SSW	*	:	0.31 /	MM /	MM /	MM
FLIR22	:	SEBASTIAN 1.7 SSE	*	:	0.31 /	MM /	MM /	MM
FLIR24	:	VERO BEACH 3.4 W	*	:	0.75 /	MM /	MM /	MM
FLIR26	:	VERO BEACH 3.5 SSW	*	:	0.51 /	MM /	MM /	MM
FLIR27	:	VERO BEACH 2.5 S	*	:	0.42 /	MM /	MM /	MM
FLIR29	:	VERO BEACH 6.0 SSE	*	:	0.64 /	MM /	MM /	MM
FLLK03	:	GROVELAND 1.7 E	*	:	0.16 /	MM /	MM /	MM
FLLK04	:	BASSVILLE PARK 1.0 NE	*	:	0.21 /	MM /	MM /	MM
FLLK05	:	MOUNT PLYMOUTH 0.2 WSW	*	:	0.27 /	MM /	MM /	MM
FLLK10	:	CLERMONT 0.4 SW	*	:	0.22 /	MM /	MM /	MM
FLLK13	:	CLERMONT 6.9 SSE	*	:	0.27 /	MM /	MM /	MM
FLLK14	:	CLERMONT 3.6 E	*	:	0.21 /	MM /	MM /	MM
FLLK15	:	CLERMONT 4.3 SSW	*	:	0.40 /	MM /	MM /	MM
FLMT01	:	PALM CITY 4.0 SW	*	:	0.62 /	MM /	MM /	MM
FLMT05	:	HOBE SOUND 3.9 NW	*	:	1.74 /	MM /	MM /	MM
FLMT13	:	OKEECHOBEE 16.4 ESE	*	:	0.48 /	MM /	MM /	MM
FLMT15	:	HOBE SOUND 2.1 SSE	*	:	0.72 /	MM /	MM /	MM
FLMT16	:	CANAL POINT 9.9 NNE	*	:	1.00 /	MM /	MM /	MM
FLMT18	:	STUART 1.0 ESE	*	:	0.36 /	MM /	MM /	MM
FLOR01	:	UNION PARK 2.9 SSE	*	:	0.31 /	MM /	MM /	MM
FLOR02	:	WINDERMERE 1.3 NW	*	:	0.15 /	MM /	MM /	MM
FLOR06	:	OCOEE 0.5 SSW	*	:	0.13 /	MM /	MM /	MM
FLOR09	:	WINTER PARK 2.1 ESE	*	:	0.26 /	MM /	MM /	MM
FLOR10	:	UNION PARK 3.9 E	*	:	0.45 /	MM /	MM /	MM
FLOR17	:	ORLANDO 2.0 ENE	*	:	0.03 /	MM /	MM /	MM
FLOS01	:	POINCIANA PLACE 2.6 NNW	*	:	0.03 /	MM /	MM /	MM
FLOS16	:	ST. CLOUD 0.1 WNW	*	:	0.20 /	MM /	MM /	MM
FLSL04	:	LAKEWOOD PARK 0.5 SW	*	:	0.55 /	MM /	MM /	MM
FLSL11	:	FORT PIERCE 2.8 SSE	*	:	0.54 /	MM /	MM /	MM
FLSL15	:	FORT PIERCE 3.4 NNE	*	:	0.43 /	MM /	MM /	MM
FLSL17	:	TRADITION 5.6 W	*	:	0.61 /	MM /	MM /	MM
FLSL19	:	PORT ST. LUCIE 4.0 NE	*	:	0.54 /	MM /	MM /	MM
FLSM05	:	LONGWOOD 2.3 WNW	*	:	0.17 /	MM /	MM /	MM
FLSM08	:	CHULUOTA 0.9 N	*	:	0.42 /	MM /	MM /	MM
FLSM15	:	FOREST CITY 1.8 NNW	*	:	0.24 /	MM /	MM /	MM
FLVL01	:	NEW SMYRNA BEACH 1.5 E	*	:	0.50 /	MM /	MM /	MM
FLVL02	:	EDGEWATER 3.3 SE	*	:	0.81 /	MM /	MM /	MM
FLVL03	:	DE LAND 4.5 NW	*	:	1.26 /	MM /	MM /	MM
FLVL05	:	ORMOND BEACH 3.5 SE	*	:	0.42 /	0.0 /	0.0 /	0.00
FLVL06	:	EDGEWATER 2.4 N	*	:	0.28 /	MM /	MM /	MM
FLVL12	:	DAYTONA BEACH 9.1 WSW	*	:	0.38 /	MM /	MM /	MM
FLVL14	:	ORANGE CITY 0.5 SSW	*	:	0.22 /	MM /	MM /	MM
FLVL17	:	DE BARY 2.5 W	*	:	0.38 /	MM /	MM /	MM
FLVL18	:	DE LAND 0.7 W	*	:	0.69 /	MM /	MM /	MM
FLVL20	:	NEW SMYRNA BEACH 4.0 SE	*	:	0.63 /	0.0 /	0.0 /	0.00

:  
.END

\$\$

FIRST COLUMN LEGEND:

FLBV - BREVARD  
FLIR - INDIAN RIVER  
FLLK - LAKE  
FLMT - MARTIN  
FLOB - OKEECHOBEE  
FLOR - ORANGE  
FLOS - OSCEOLA  
FLSL - SAINT LUCIE  
FLSM - SEMINOLE  
FLVL - VOLUSIA

---

NWUS52 KMLB 272149  
LSRMLB

PRELIMINARY LOCAL STORM REPORT  
NATIONAL WEATHER SERVICE MELBOURNE FL  
547 PM EDT SAT AUG 27 2011

..TIME...	...EVENT...	...CITY LOCATION...	...LAT.LON...
..DATE...	....MAG....	..COUNTY LOCATION..ST..	...SOURCE....
	..REMARKS..		
1115 AM 08/27/2011	HIGH SURF	NEW SMYRNA BEACH VOLUSIA	29.02N 80.93W FL BROADCAST MEDIA

\*\*\* 1 FATAL \*\*\* 55-YO SURFER KNOCKED OVER IN SHALLOW  
WATER BY A WAVE AND HIT HIS HEAD. NO VITAL SIGNS UPON  
RESCUE AND LATER PRONOUNCED DEAD.

&&

\$\$

ARB

---

updated: MRV 9/8/2011