

Tropical Storm Gabrielle Tornado/Brevard County September 14, 2001

[National Hurricane Center Summary of Gabrielle](#)



Damage at Anchorage Yacht Basin

ID	Hz/AMH	TVS	INCOU	FUNP/FUN/NO	SIZE	VIL	DBZ	PI	TOP	FUST	AVRT
Y0	43/39	NONE	3DCO	0/0/0.00	6	46	3.0	15.0	171/30		
Q3	260/34	NONE	UNCO	0/0/0.00	7	48	15.5	21.7	NEW		
K7	222/32	NONE	UNCO	0/0/0.00	1	40	2.2	9.2	NEW		
Y7	233/32	NONE	UNCO	0/0/0.00	1	40	9.0	12.5	NEW		

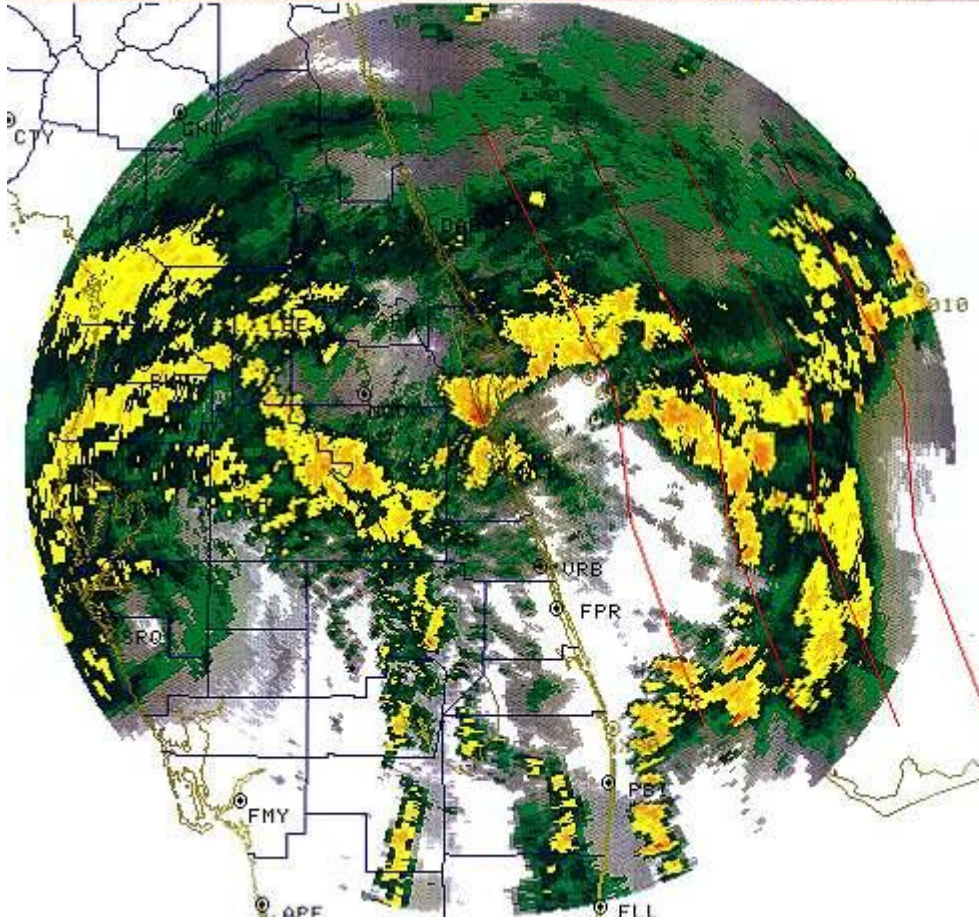
09/14/01 18:17
 CMP REF 37 CR
 124 NM .54 NM RES
 09/14/01 12:28
 RDA:KMLB 28/06/46H
 116 FT 80/39/14W

MODE A / 11
 CNTR 0DEG 0NM
 MAX= 55 DBZ



MAG=1X FL= 1 COM=1
 OUL: M AT
 OUL U/A-TV

A/R (RDA)
 Q15 R 1810 R
 PROD RCVD: U RPS
 KMLB 1815 .13 0.5
 14/1816 DELTA SYS
 CAL = 0.25 DBZ
 HARDCOPY
 HARDCOPY BUSY
 ALERTS: 1) UP 2) UR



Long Range Radar Image at 828 AM.