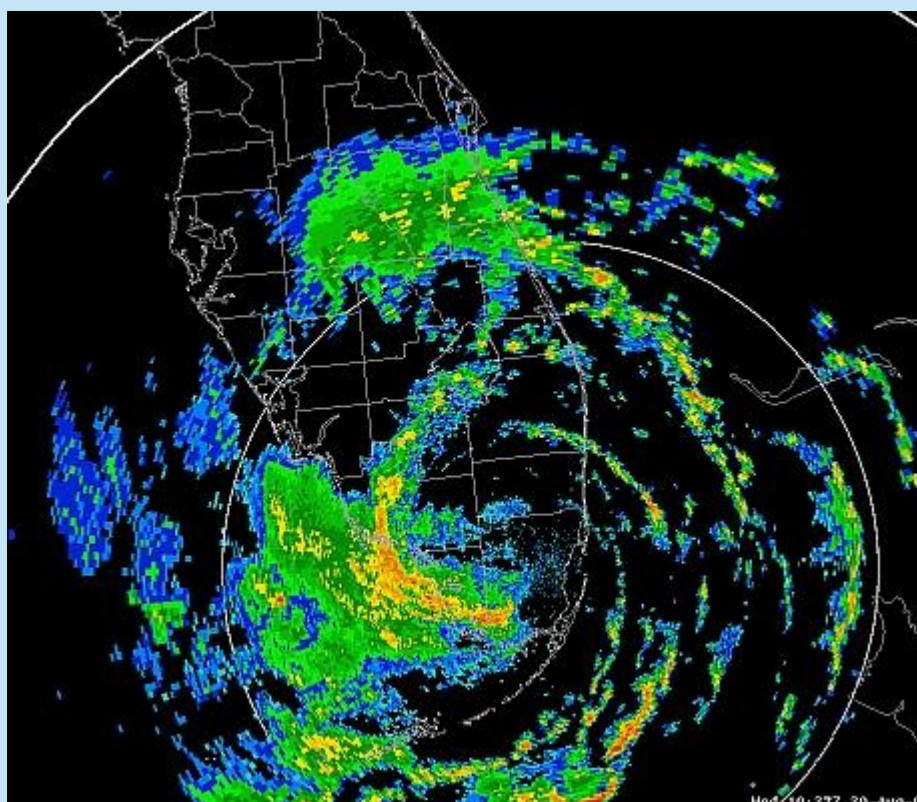


Tropical Storm Ernesto
August 29-30, 2006



Tropical Storm Ernesto over south Florida

[National Hurricane Center Summary of Ernesto](#) (pdf)

POST TROPICAL CYCLONE REPORT...TROPICAL STORM ERNESTO
NATIONAL WEATHER SERVICE MELBOURNE FL
315 PM EDT FRI SEP 8 2006

COUNTIES INCLUDED...VOLUSIA...LAKE...ORANGE...SEMINOLE...BREVARD...
INDIAN RIVER...ST. LUCIE...MARTIN...OSCEOLA...OKEECHOBEE

A. WIND DATA

ASOS HIGHEST 2-MIN WIND

COUNTY	CITY (SID)	DIR / SPD (KT)	DATE / TIME (UTC)
ST. LUCIE	FORT PIERCE (FPR)	130 / 26	30 / 1717 UTC
INDIAN RIVER	VERO BEACH (VRB)	130 / 27	30 / 2027 UTC
BREVARD	MELBOURNE (MLB)	230 / 25	31 / 0213 UTC

ORANGE	ORLANDO INT'L (MCO)	360 / 22	30 /	2306 UTC
ORANGE	ORLANDO EXEC (ORL)	10 / 19	30 /	2259 UTC
LAKE	LEESBURG (LEE)	30 / 16	30 /	1954 UTC
SEMINOLE	SANFORD (SFB)	270 / 22	31 /	0607 UTC
VOLUSIA	DAYTONA BEACH (DAB)	260 / 19	31 /	0816 UTC

ASOS HIGHEST GUST REPORTED

COUNTY	CITY (SID)	DIR / SPD (KT)	DATE / TIME (UTC)
ST. LUCIE	FORT PIERCE (FPR)	110 / 34	30 / 1716 UTC
INDIAN RIVER	VERO BEACH (VRB)	190 / 34	30 / 1936 UTC
BREVARD	MELBOURNE (MLB)	230 / 32	31 / 0212 UTC
ORANGE	ORLANDO INT'L (MCO)	20 / 28	30 / 2255 UTC
ORANGE	ORLANDO EXEC (ORL)	20 / 26	30 / 2258 UTC
LAKE	LEESBURG (LEE)	30 / 20	30 / 1953 UTC
SEMINOLE	SANFORD (SFB)	270 / 22	31 / 0624 UTC
VOLUSIA	DAYTONA BEACH (DAB)	260 / 23	31 / 0815 UTC

OTHER WIND REPORTS...HIGHEST SUSTAINED WIND

COUNTY	CITY	DIR / SPD (KT)	DATE / TIME
BREVARD	PORT CANAVERAL USCG	SW / 20	31/0500 UTC

OTHER WIND REPORTS...PEAK GUSTS

COUNTY	CITY	DIR / SPD (KT)	DATE / TIME
MARTIN	JENSEN BEACH	SW / 40	30/2326 UTC
OKEECHOBEE	OKEECHOBEE (AIRPORT)	260 / 26	30/2350 UTC
OKEECHOBEE	OKEECHOBEE (OKEF1)	31	30/2330 UTC
VOLUSIA	PONCE INLET USCG	SW / 19	31/0900 UTC
BREVARD	PORT CANAVERAL USCG	SW / 26	31/0800 UTC

B.PRESSURE DATA

ASOS

COUNTY	CITY (SID)	PRESS/MB	DATE/TIME (UTC)
ST. LUCIE	FORT PIERCE (FPR)	1002.0	30 / 2201 UTC
INDIAN RIVER	VERO BEACH (VRB)	1001.7	30 / 2224 UTC
BREVARD	MELBOURNE (MLB)	1001.0	30 / 2339 UTC
ORANGE	ORLANDO INT'L (MCO)	1003.7	30 / 2306 UTC
ORANGE	ORLANDO EXEC (ORL)	1004.7	30 / 2259 UTC
LAKE	LEESBURG (LEE)	1007.5	30 / 1954 UTC
SEMINOLE	SANFORD (SFB)	1004.1	31 / 0607 UTC
VOLUSIA	DAYTONA BEACH (DAB)	1003.7	31 / 0816 UTC

C. STORM TOTAL RAINFALL

ASOS

COUNTY	CITY (SID)	RAINFALL (IN)
ST. LUCIE	FORT PIERCE (FPR)	1.12
INDIAN RIVER	VERO BEACH (VRB)	1.51
BREVARD	MELBOURNE (MLB)	3.06
ORANGE	ORLANDO INT'L (MCO)	1.21
ORANGE	ORLANDO EXEC (ORL)	1.44

LAKE	LEESBURG (LEE)	0.33
SEMINOLE	SANFORD (SFB)	0.90
VOLUSIA	DAYTONA BEACH (DAB)	2.05

PUBLIC REPORTS

COUNTY	LOCATION	RAINFALL (IN)
MARTIN	JENSEN BEACH	0.97
OKEECHOBEE	OKEECHOBEE (AIRPORT)	1.94
BREVARD	PALM BAY	3.21
BREVARD	ROCKLEDGE	2.66
BREVARD	MELBOURNE	4.02
BREVARD	MELBOURNE	3.71
LAKE	LADY LAKE	0.30
BREVARD	PALM BAY (TURKEY CREEK)	2.42
VOLUSIA	NEW SMYRNA BEACH	2.52

COOPERATIVE STATIONS

COUNTY	LOCATION (SID)	RAINFALL (IN)
LAKE	CLERMONT (CLRF1)	0.63
LAKE	LISBON (LSBF1)	0.33
VOLUSIA	DELAND (DELF1)	1.11
VOLUSIA	PONCE INLET (PONF1)	2.07
OSCEOLA	KENANSVILLE (KENF1)	3.08
OSCEOLA	KISSIMMEE (KSSF1)	1.95
OKEECHOBEE	OKEECHOBEE (OKEF1)	1.84
ST. LUCIE	FT PIERCE WP (FPCF1)	0.96
ST. LUCIE	NETTLES ISLAND (NETF1)	0.80
BREVARD	PALM BAY (PLBF1)	2.61
BREVARD	SCOTTSMOOR (SCMF1)	2.97
BREVARD	MELBOURNE NWS (MLBF1)	3.47
BREVARD	TITUSVILLE (TITF1)	2.67
ORANGE	PLYMOUTH (PLTF1)	1.38
ORANGE	ORLANDO (OREF1)	2.25
MARTIN	PORT SALERNO (PTSF1)	1.12
MARTIN	STUART (STRF1)	1.69
SEMINOLE	SANFORD (SFNF1)	0.90
INDIAN RIVER	VERO BEACH (VRBF1)	1.52

D. STORM TIDES AND HEIGHTS

NONE

E. BEACH AND INTRACOASTAL EROSION

NONE

F. FLOODING

NO SIGNIFICANT FLOODING WAS REPORTED...BUT WSR-88D RAINFALL ESTIMATES SHOWED A SWATH OF THREE TO FOUR INCHES OF RAINFALL EXTENDING ACROSS SOUTHERN OSCEOLA AND CENTRAL AND NORTH BREVARD COUNTIES. THERE WERE ISOLATED AMOUNTS NEAR FIVE INCHES OF RAIN IN SOUTHERN OSCEOLA COUNTY.

G. TORNADOES

ON AUG 30 AT 340 PM EDT AN F0 TORNADO TOUCHED DOWN BRIEFLY JUST NORTH OF DEER PARK ON ON HIGHWAY 419 IN OSCEOLA COUNTY. THE SAME

CELL PRODUCED A SECOND BRIEF TOUCH DOWN OF AN F0 TORNADO ABOUT 2 MILES SOUTHWEST OF HOLOPAW IN OSCEOLA COUNTY. NO SIGNIFICANT DAMAGE WAS REPORTED.

H. STRM EFFECTS DAMAGE AND IMPACTS BY COUNTY
NONE

JACOBS/TURNER