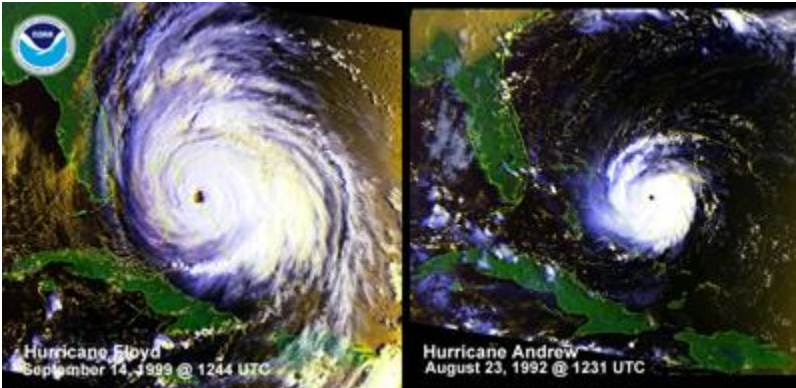


Hurricane Floyd East Central Florida Summary September 14-15, 1999



HIGHEST WIND, in Knots. Speed is expressed as DDFF, where first two digits represent speed direction and last two is speed. For example, 3520 means wind was from north (350 degrees) at 20 knots.

LOCATION	SUSTAINED	DATE/TIME	PEAK	DATE/TIME	Notes:
LEESBURG	3520	15/1153Z	3427	15/1201Z	ASOS SITE
ORLANDO	3224	15/0853Z	0142	15/0728Z	ASOS SITE
DAYTONA BEACH	3636	15/1053Z	0160	15/0853Z	ASOS SITE
SANFORD	0725	14/2024Z	0737	14/2024Z	ASOS SITE
MELBOURNE	3645	15/0501Z	0159	15/0458Z	ASOS SITE Not Commissioned
MELBOURNE	0432	15/0655Z	0452	15/0655Z	NWS Office
PATRICK AFB	3349	15/0820Z	3257	15/1014Z	ASOS SITE Not Maintained
FT. PIERCE	2729	15/1610Z	3343	15/0736Z	ASOS SITE
BUOY 41009	3152	15/1000Z	3170	15/1000Z	28.5N 80.2W
BUOY 41010	0572*	15/0700Z	0591*	15/0700Z	28.9N 78.6W

Data Quality Notes:

Patrick AFB ASOS site is from a site which is neither commissioned nor properly maintained, and so the data is not official.

Melbourne ASOS site is likely to be reliable, but the site is not commissioned, and not official.

Click [here](#) for more information on ASOS.

At Buoy 41010: Because the platform was engulfed in seas of 50 feet or greater height at this time, it is possible that the wind report is inaccurate (platform in wave troughs). The platform broke from its mooring during the storm and drifted 12 miles.

SITES WHICH STOPPED SENDING OBSERVATIONS:

Titusville (TIX)
Melbourne FAA (MLB)
Vero Beach FA (VRB)

LOWEST PRESSURE

STATION	MILLIBARS	DATE/TIME
LEESBURG	996.4	15/1053Z
ORLANDO	993.8	15/0853Z
DAYTONA BEACH	991.8	15/1353Z
MELBOURNE	989.1	15/0900Z
FT. PIERCE	989.5	15/0735Z
BUOY 41009	980.9	15/0900Z
BUOY 41010	939.6	15/0900Z

Buoy 41010 broke free from mooring during storm.

RAINFALL...

JACKSONVILLE (JAX) 1.15 INCHES
ORLANDO (MCO) 1.26 INCHES
SANFORD (SFB) 3.20 INCHES
MELBOURNE (MLB) 1.35 INCHES
DAYTONA BEACH (DAB) 1.23 INCHES

STORM TIDES...

A STORM SURGE OF ABOUT 4 FEET ABOVE THE ASTRONOMICAL TIDE OCCURRED ALONG BREVARD AND VOLUSIA COUNTIES.

BEACH EROSION...

VOLUSIA COUNTY SUFFERED EXTENSIVE BEACH EROSION. ESTIMATED DOLLAR AMOUNTS ARE NEAR 10 MILLION. THE LANDMARK MAIN STREET PIER AND RESTAURANT LOST A 200 FOOT SECTION BUT THE PIER RESTAURANT SURVIVED.

DURING THE STORM A STRONG LONG SHORE CURRENT WAS MOVING SOUTH IN THE SURF ZONE. MOST OF THE SAND DUNE LINES IN THE COUNTY WERE ERODED.

IN BREVARD COUNTY THE EROSION WAS LESS SEVERE BUT LOCAL OFFICIALS STILL ESTIMATE DAMAGE AT 2.4 MILLION DOLLARS. THERE WAS ALSO SIGNIFICANT EROSION AND LOSS OF SOME RESIDENTIAL BOAT PIERS ALONG THE INDIAN RIVER AND BANANA RIVER LAGOONS. MOST COASTAL AREAS REPORTED MINOR BEACH EROSION ASSOCIATED WITH THE HEAVY SURF.

FLOODING...

NO FRESHWATER FLOODING WAS REPORTED.

TORNADOES...
NONE

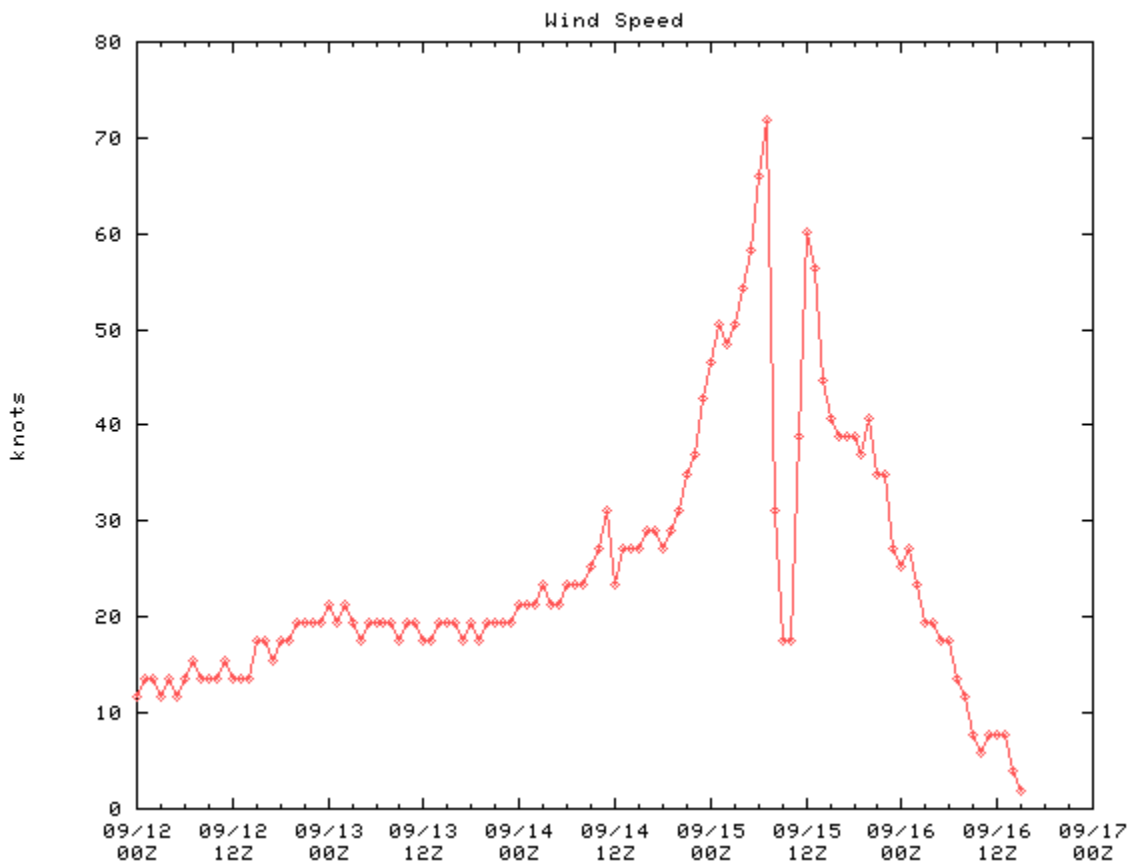
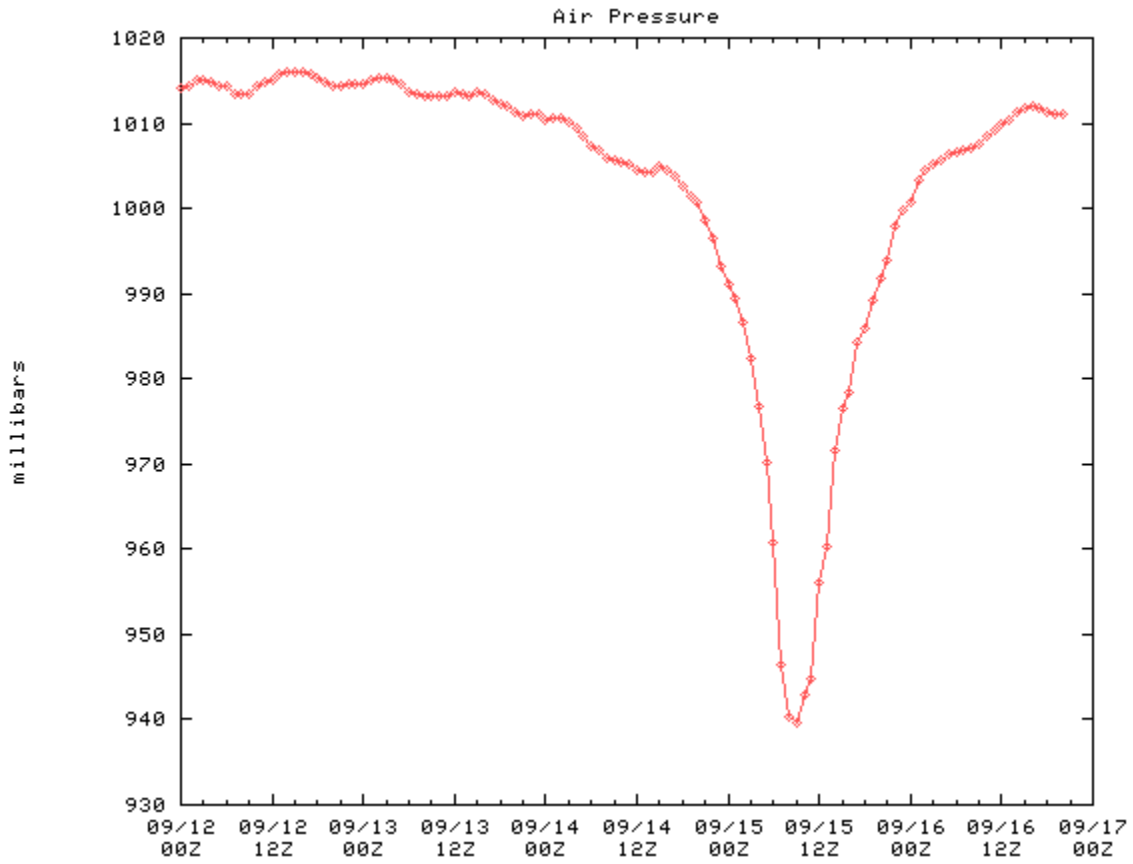
STORM EFFECTS...VOLUSIA COUNTY WAS HARDEST HIT BY THE WINDS AND RAIN BANDS FROM HURRICANE FLOYD. INITIAL DAMAGE ESTIMATES WERE NEAR 42 MILLION DOLLARS. TEN MILLION OF THAT WAS DUE TO BEACH EROSION. THREE HUNDRED THIRTY SEVEN HOMES WERE DAMAGED BY WIND OR FALLING TREES.

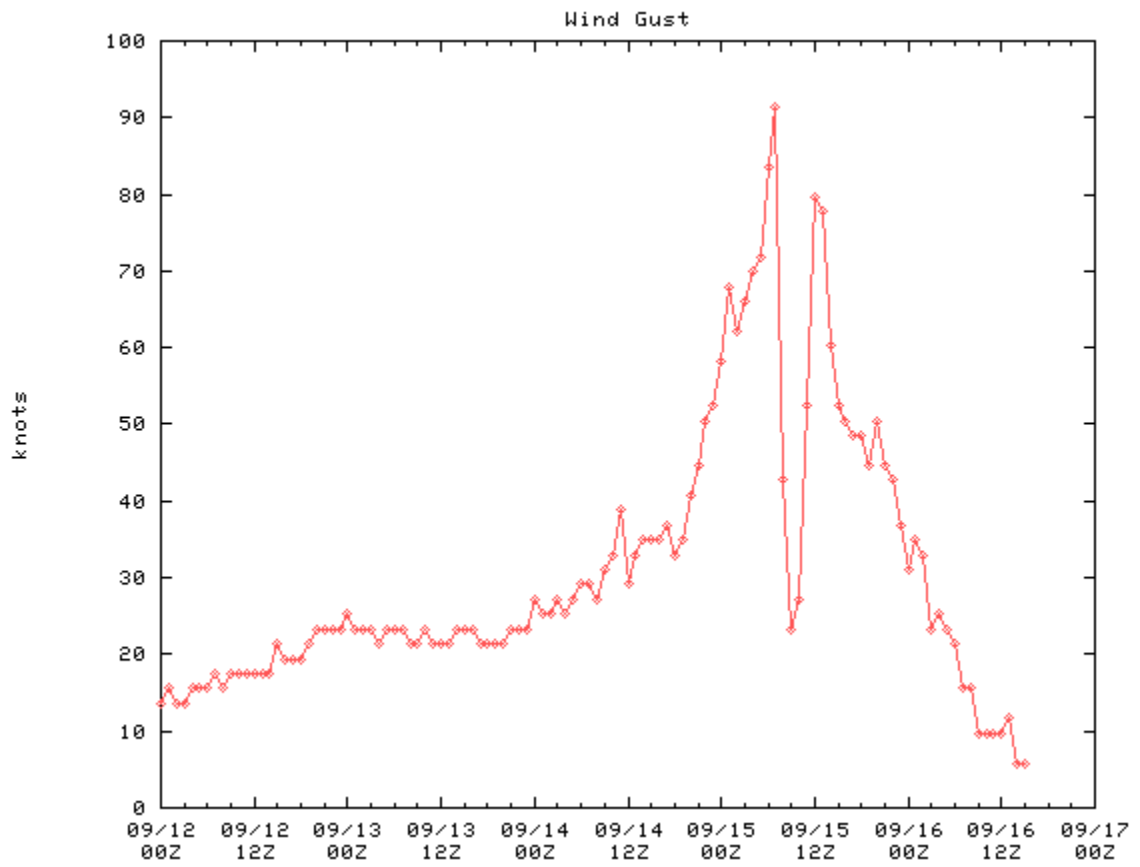
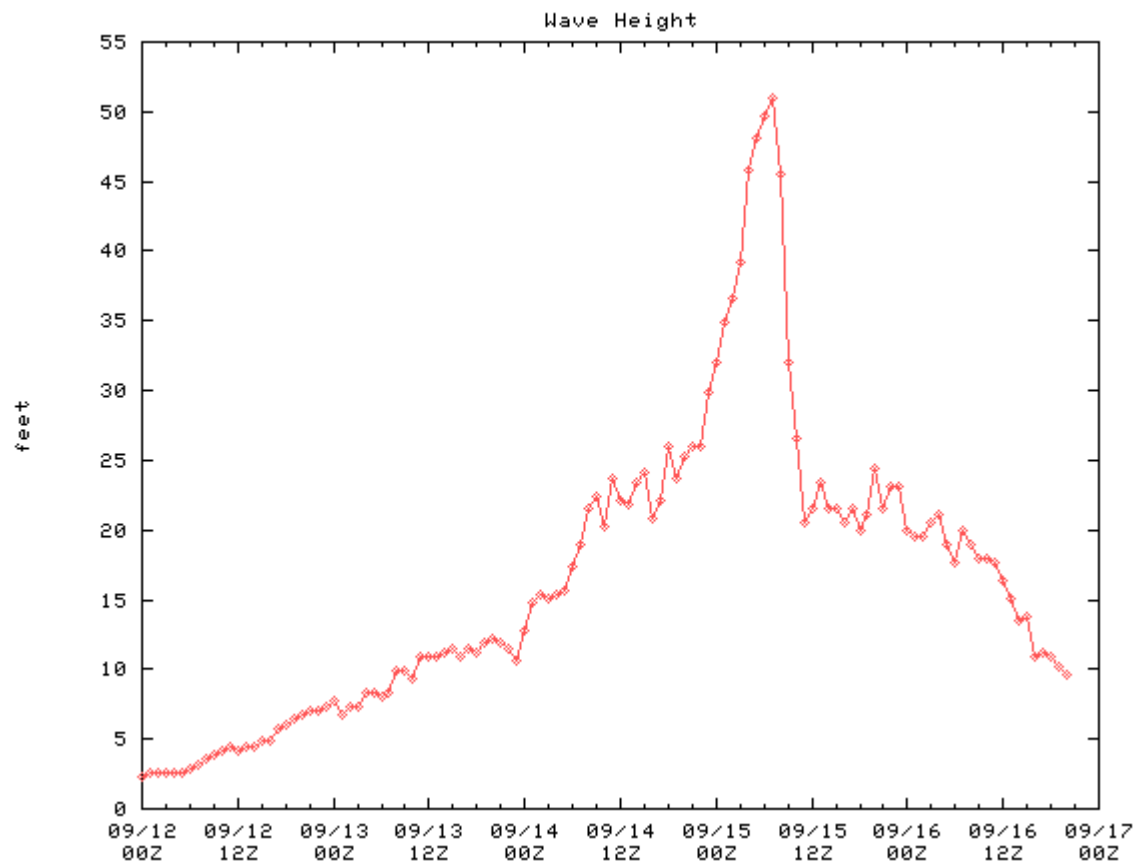
FIFTY FIVE THOUSAND HOMES LOST POWER DURING THE STORM. WSR 88D RAINFALL ESTIMATES SHOWED AN AREA OF 4 TO 5 INCHES OF RAIN NEAR AND SOUTHWEST OF DAYTONA BEACH. NO FRESH WATER FLOODING WAS REPORTED.

IN BREVARD COUNTY AN ESTIMATED 4.5 MILLION DOLLARS DAMAGE WAS DONE. ABOUT HALF OF THIS WAS DUE TO BEACH EROSION. A FEW BEACH FRONT HOMES RECEIVED MAJOR DAMAGE FROM THE SURF AND WIND BUT THEY WERE ALREADY IN POOR CONDITION. THE STORM PRODUCED WIDESPREAD POWER OUTAGES COUNTY WIDE. HUNDREDS OF TREES WERE BLOWN DOWN. SOME HOTELS AND HOMES ALONG THE BEACH FRONT SUFFERED MINOR ROOF DAMAGE OR DAMAGE FROM WIND DRIVEN RAIN.

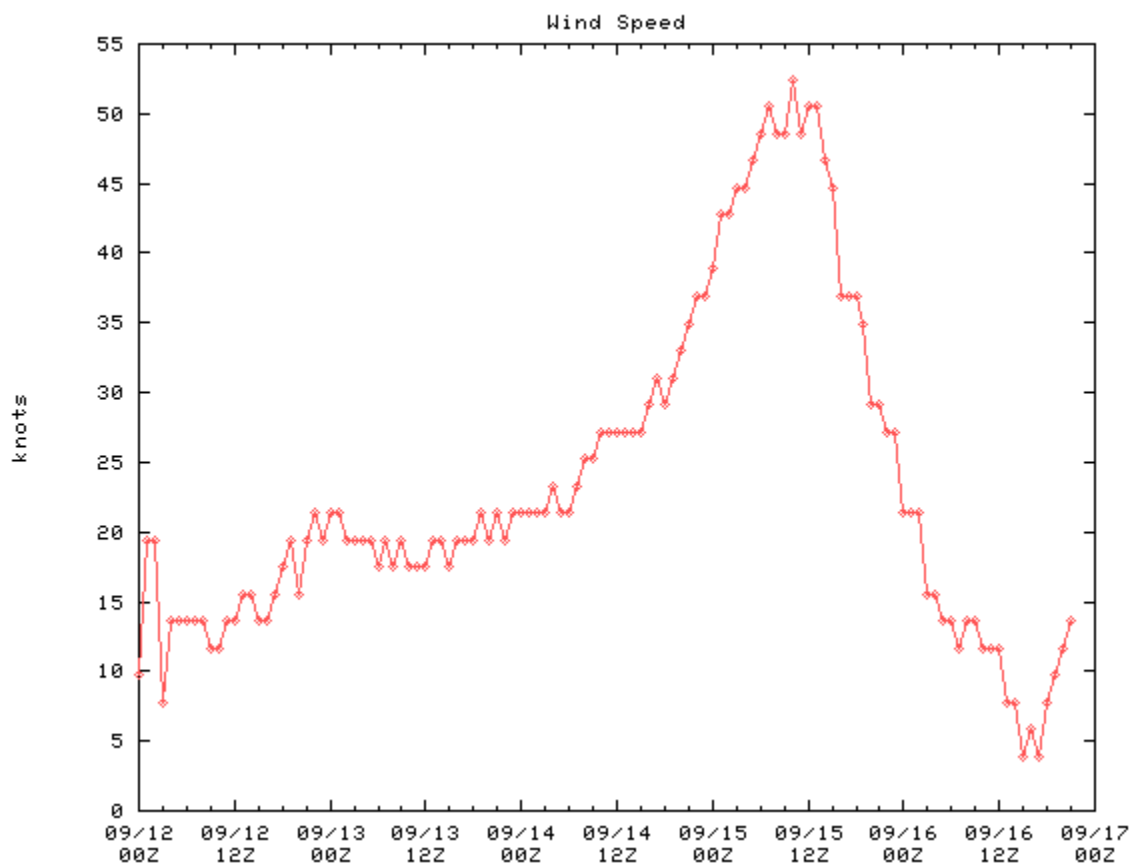
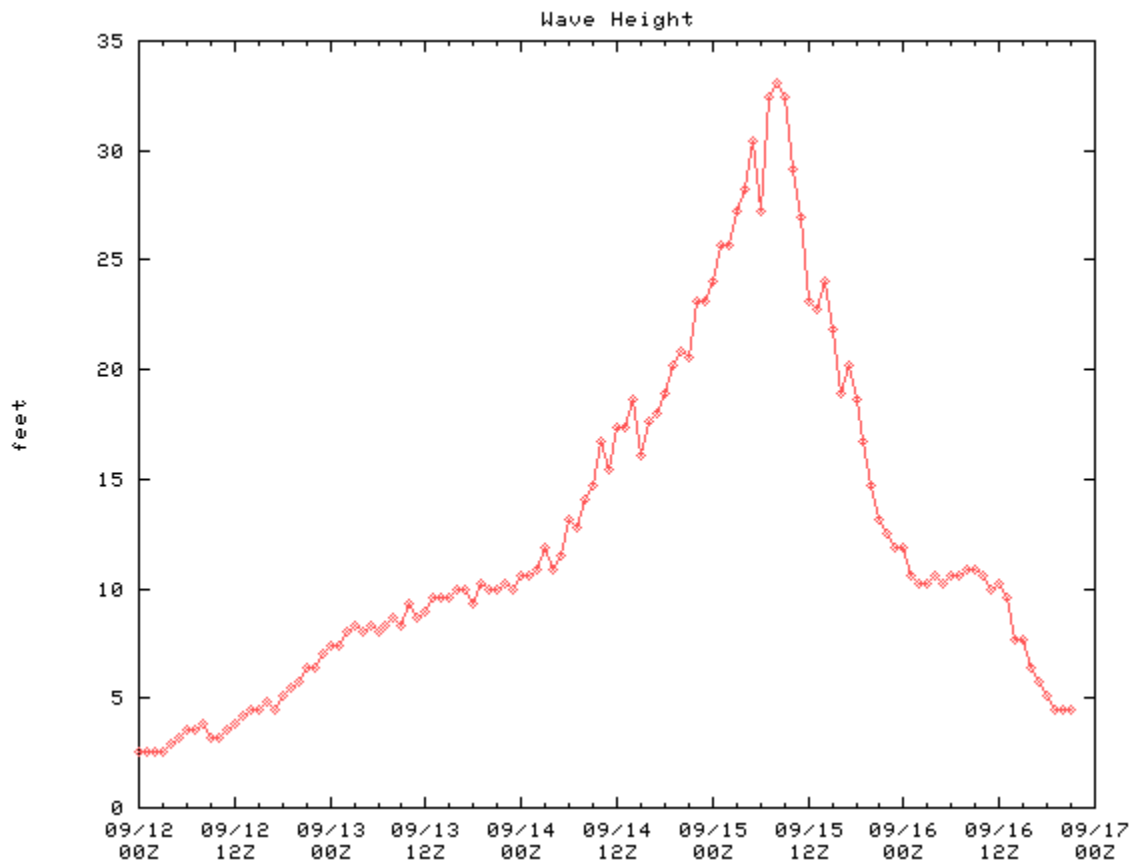
IN ORANGE AND SEMINOLE COUNTIES THE HIGHEST MEASURED WIND WAS ONLY 42 KNOTS BUT IT IS LIKELY STRONGER WINDS OCCURRED. THE MAJOR EFFECT FROM THE STORM WAS DOWNED TREES AND POWER LINES. HUNDREDS OF OLD OAK AND PINES WERE BLOWN DOWN DUE BY HIGH WINDS. NINETEEN HOMES RECEIVED MINOR DAMAGE.

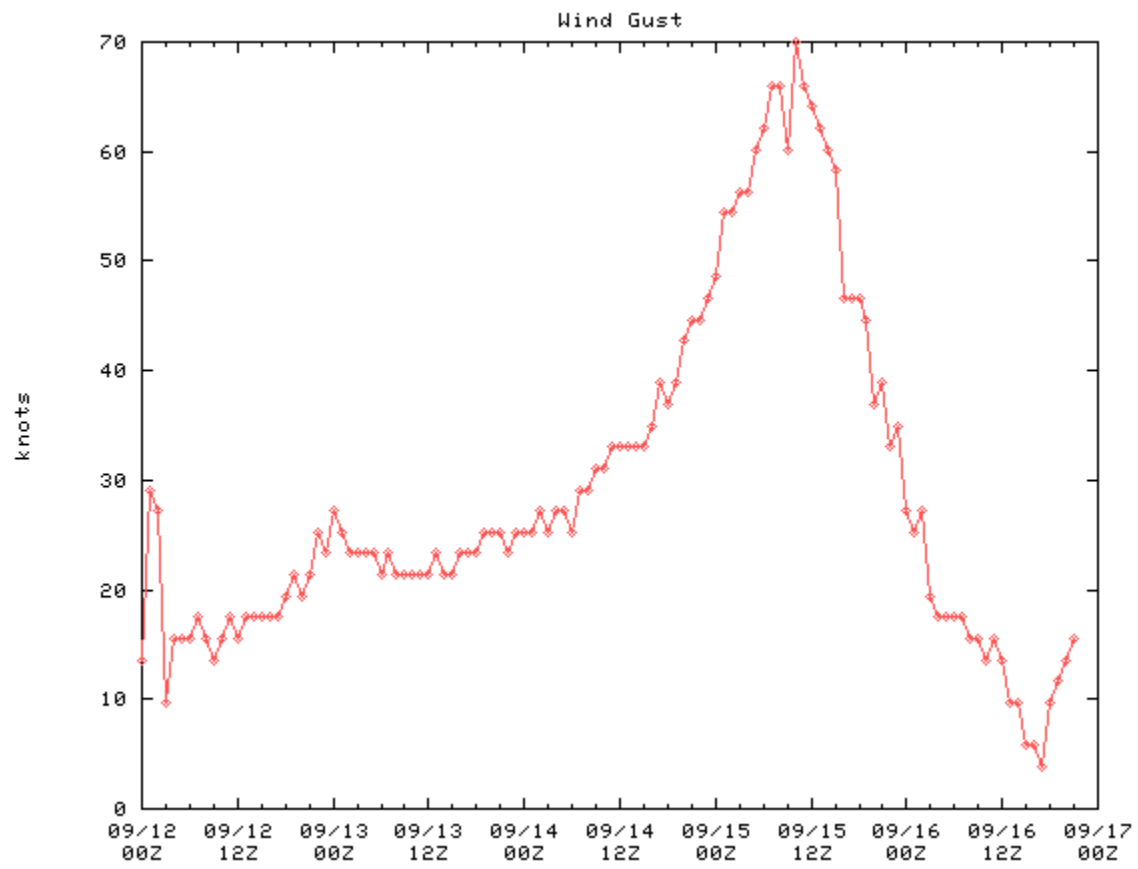
Data from Buoy 41010 During Passage of Hurricane Floyd September 15, 1999





Data from 41009 During Passage of Hurricane Floyd September 15, 1999







Cocoa Beach Erosion



Patrick AFB erosion



Tree down on mobile home in New Smyrna Beach



Daytona Beach Main Street Pier collapsing