



# Drought Information Statement for southeast MS, southwest AL, and the western FL Panhandle

Valid 11/16/2023

Issued By: WFO Mobile/Pensacola

Contact Information: [sr-mob.webmaster@noaa.gov](mailto:sr-mob.webmaster@noaa.gov)

- This product will be updated November 23, 2023 (or sooner) if drought conditions change significantly.
- Please see all currently available products at [drought.gov/drought-information-statements](https://drought.gov/drought-information-statements).
- Please visit [weather.gov/mob/DroughtInformationStatement](https://weather.gov/mob/DroughtInformationStatement) for previous statements.



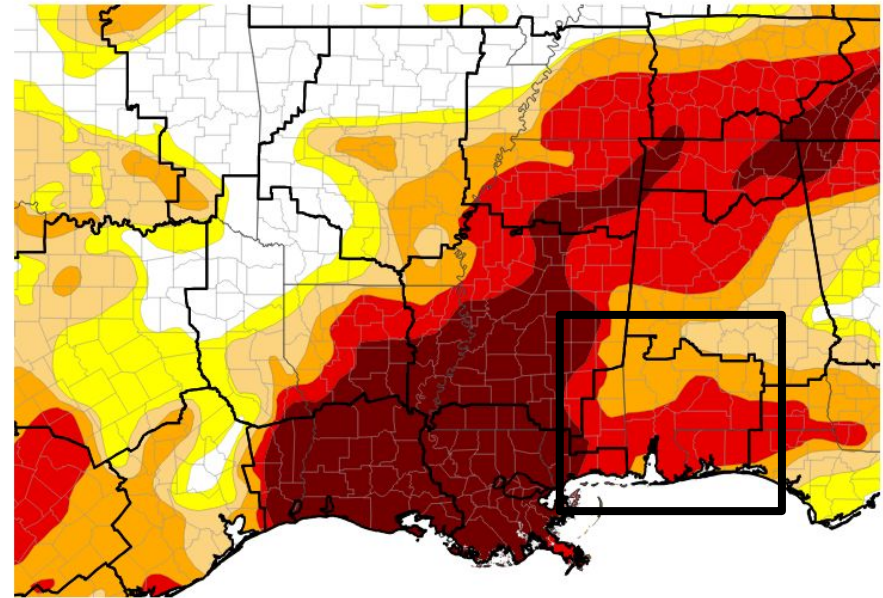


# U.S. Drought Monitor

Link to the [latest U.S. Drought Monitor](#) for the SE US and central Gulf Coast

- Despite recent beneficial rainfall, severe to extreme drought lingers across the central Gulf Coast.
- Drought intensity and Extent
  - **D4 (Exceptional Drought)**: Persists for western Stone Co. MS.
  - **D3 (Extreme Drought)**: Lingers over much of the southern half of the local area.
  - **D2 (Severe Drought)**: Along and north of the U.S. Highway 84 Corridor.

U.S. Drought Monitor



U.S. Drought Monitor



Source(s): NDMC, NOAA, USDA; image courtesy of Drought.gov

Data Valid: 11/14/23



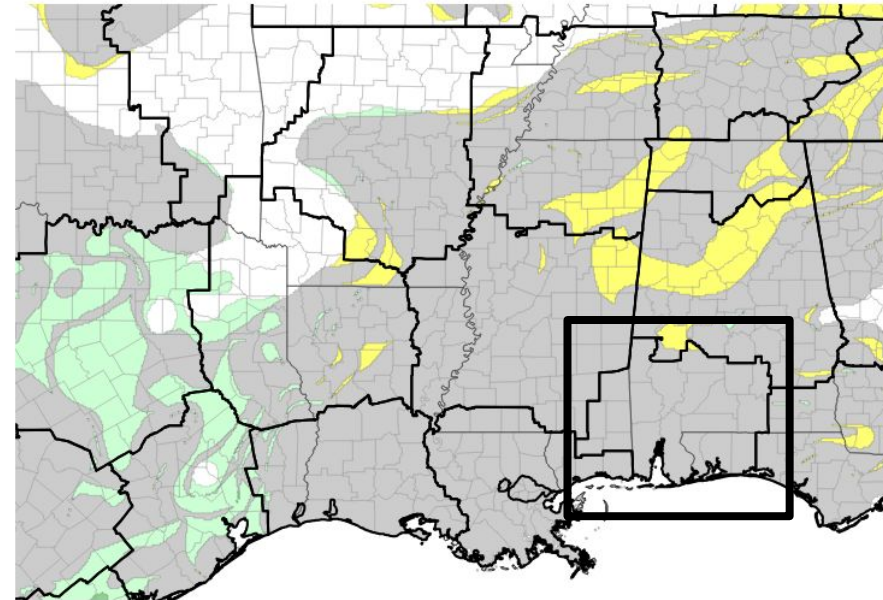


# Recent Change in Drought Intensity

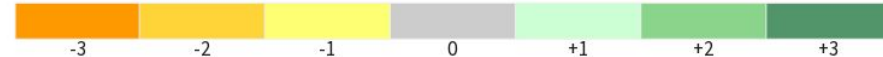
Link to the latest [1-week change map](#) for the SE US and central Gulf Coast

- One Week Drought Monitor Class Change:
  - **No Change:** The local area experienced no change in the drought intensity compared to the past week.

U.S. Drought Monitor 1-Week Change Map



Drought Change Since Last Week



Source(s): NDMC, NOAA, USDA; image courtesy of Drought.gov

Data Valid: 11/14/23







# Precipitation

## Table of Accumulated Rainfall (Inches) from Select Locations - Period: August 1 to November 15, 2023

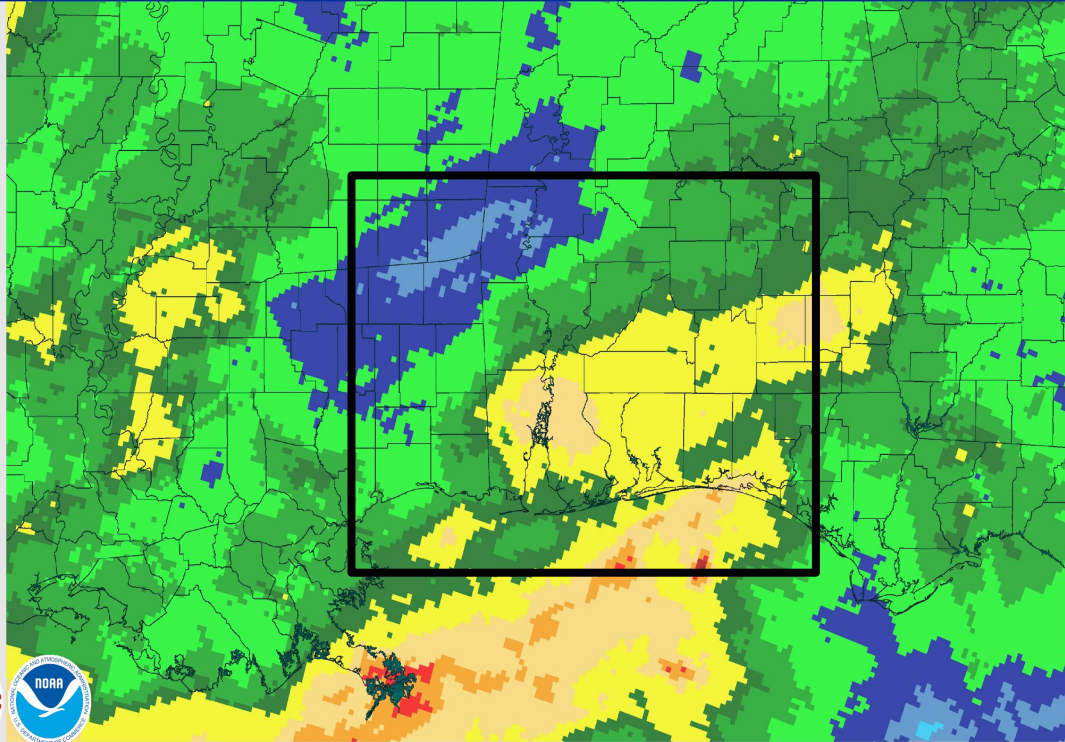
Station	Observed	Normal	Departure
Atmore AL (COOP)	4.06	16.91	-12.85
Fairhope AL 2NE (COOP)	8.14	20.51	-12.37
Niceville FL (COOP)	11.97	23.23	-11.26
Beaumont MS (COOP)*	5.01	16.03	-11.02
Pensacola FL (ASOS)	9.97	20.98	-11.01
Bay Minette AL (COOP)	9.54	20.48	-10.94
Crestview FL (ASOS)	7.04	17.75	-10.71
Pensacola FL 7NNE (COOP)	8.96	19.30	-10.34
Mobile AL (ASOS)	8.19	18.47	-10.28
Evergreen AL (ASOS) *	5.66	15.21	-9.55
Leakesville MS 6WSW (COOP)	7.05	15.92	-8.87
Downtown Mobile AL (ASOS)	10.38	17.50	-7.12
Waynesboro MS 2W (COOP)	7.01	14.11	-7.10

\* Indicates Record Lowest Amount Recorded for Period

### November 16, 2023 30-Day Observed Precipitation

Created on: November 16, 2023 - 18:21 UTC

Valid on: November 16, 2023 12:00 UTC





# Summary of Impacts

Links: See/submit [Condition Monitoring Observer Reports \(CMOR\)](#) and view the [Drought Impacts Reporter](#)

## Hydrologic Impacts

- Due to recent, beneficial rains, flow and stage levels on many local streams/ivers have improved.

## Agricultural Impacts

- Extreme degree of crop loss to yield potential in the hardest hit areas. Crop disease is elevated along with increased occurrence of insect damage. Reports of winter rye-grass being barely visible and drought stressed. Peanuts and cotton reported to be of lower grade and more difficult to harvest due to lack of rainfall. Livestock stressed as pasture lands provide little to no feed with reports in some areas of 50% hay reduction and 25 to 50% reduction in quality. Increased farmer expense for supplemental feeding initiatives to maintain livestock condition.

## Fire Hazard Impacts

- The risk of significant wildfire remains above normal over southeast Mississippi and the entire state of Alabama.

## Societal Impacts

- Increase in air-borne allergens likely to create problems for respiratory sensitive groups.

## Mitigation Actions

- Water conservation techniques are strongly encouraged in drought areas. Please refer to your municipality and/or water provider for mitigation information. Local water restriction ordinances may be in place.





# Hydrologic Conditions and Impacts

- Due to recent rains over the past week, the response in flow and stage levels on many local stream and river points has resulted in improvement. Some river and stream points though continue to run below normal.

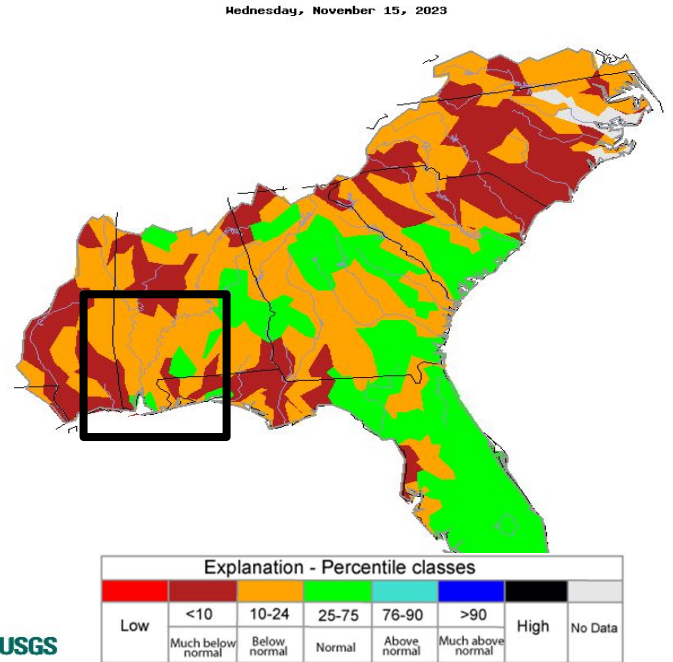


Image Caption: USGS 7 day average streamflow map valid 11/15/2023.

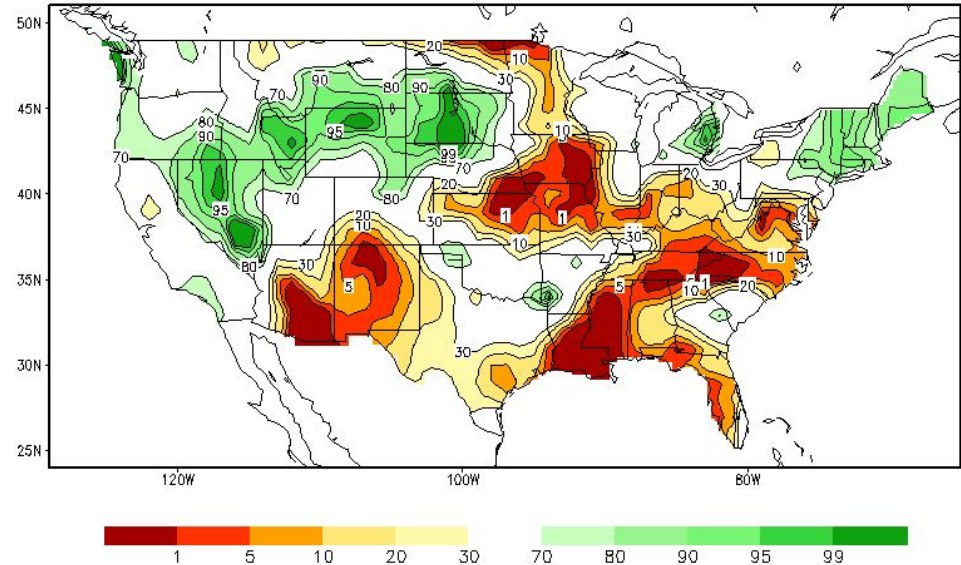




# Agricultural Impacts

- Winter crop grade is poor to very poor in the hardest hit drought areas. Crop disease, insect damage to fields, and livestock stress is elevated. **It is recommended that farmers reach out to local USDA office for details on available funding assistance.**
- The latest topsoil moisture content short to very short metrics vs 10-year means (Depth 6", courtesy of USDA 11/12/23):
  - MS: 84% Dry (Avg: 24%)
  - AL: 89% Dry (Avg: 31%)
  - FL: 49% Dry (Avg: 28%)

Calculated Soil Moisture Ranking Percentile  
NOV 15, 2023

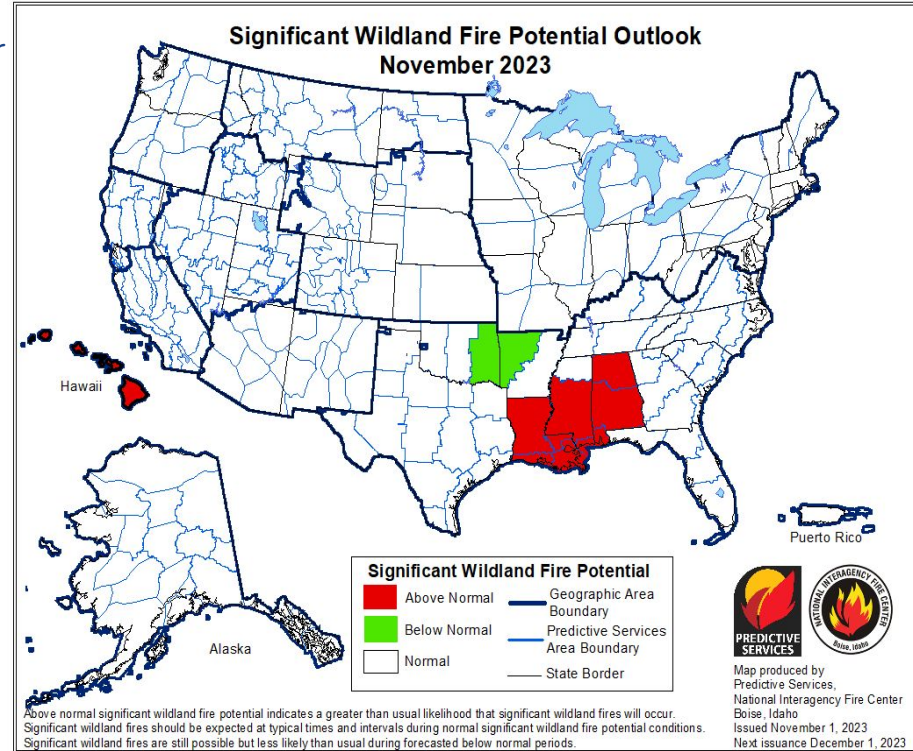




# Fire Hazard Impacts

Link to [Wildfire Potential Outlooks from the National Interagency Coordination Center.](#)

- Decayed timber and very dry underbrush in area forests along with dry grasslands pose an above normal risk for significant wildfire potential over the central and southern part of the state of Mississippi and all of Alabama. In the event of strong cold frontal passages, periods of critically low daytime humidity in combination gusty northerly winds will only exacerbate the wildfire potential.
- Local park campers are strongly urged to follow park instructions on campfires. If allowed, keep camp fires contained in enclosed screens if available and ensure fires are completely put out before going to bed.
- To view the seven day significant fire potential maps, please refer to the link above.



**Latest Burn Bans and/or Advisories By State:**  
[Mississippi](#) and [Alabama](#) and [Florida](#)

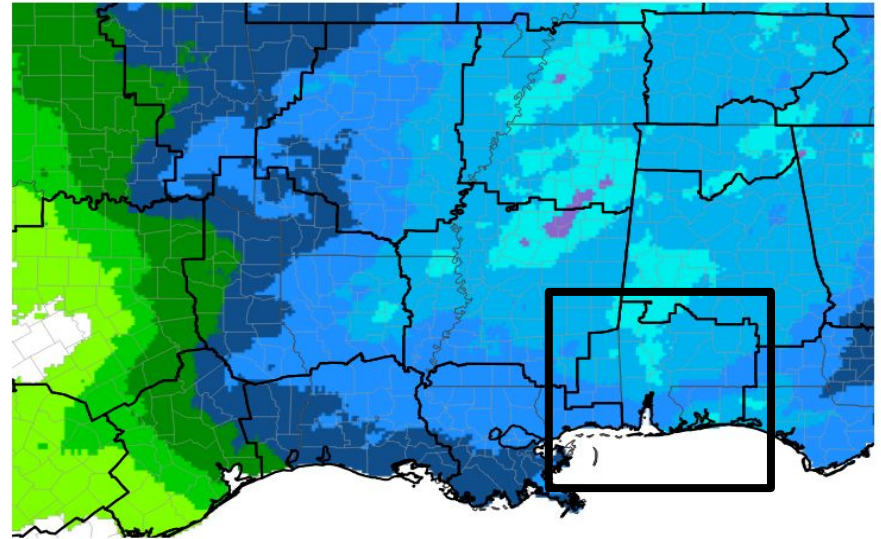




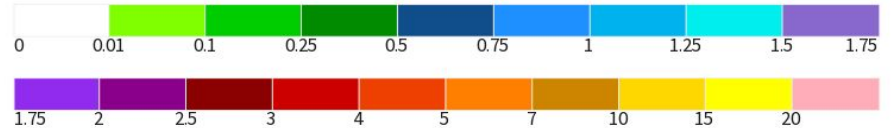
# Seven Day Precipitation Forecast

- The shorter term outlook indicates a cold front will bring additional rainfall across the Gulf coast early in the Thanksgiving Holiday week.
- Through November 23rd, 0.75 to 1.25” event total, basin average rains are anticipated with pockets of locally higher amounts possible.

## 7-Day Quantitative Precipitation Forecast



Predicted Inches of Precipitation



Source(s): National Weather Service Weather Prediction Center; image courtesy of Drought.gov

Data Valid: 11/16/23

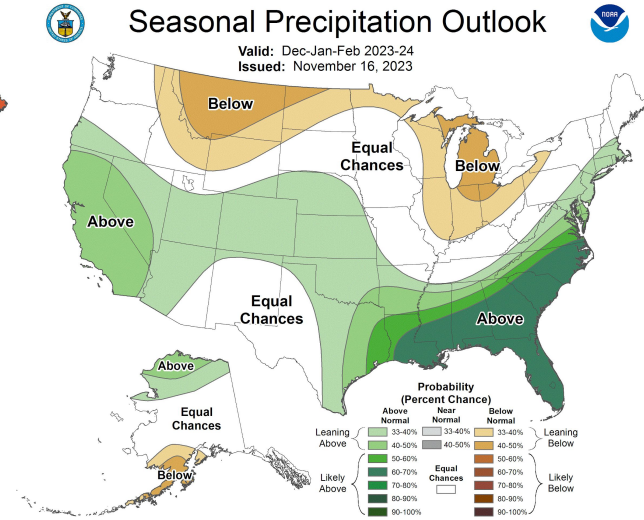
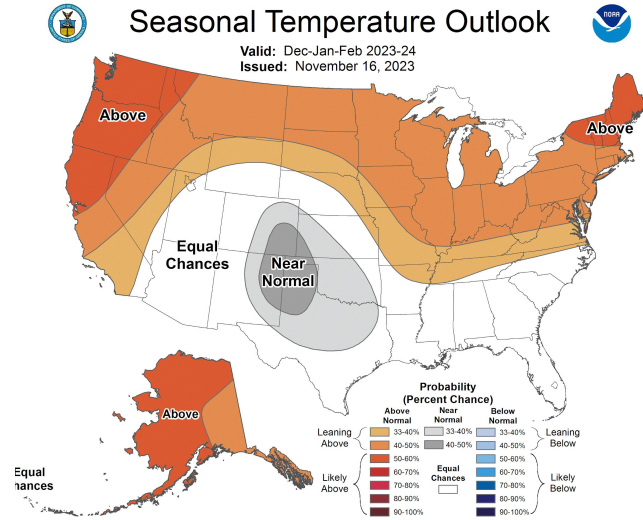




# Long-Range Outlooks

The latest monthly and seasonal outlooks can be found on the [CPC homepage](#)

- Equal chances of above or below normal temperatures are favored from Nov-Dec-Jan 2023-24.
- The seasonal outlook for precipitation over the same period is now leaning likely above normal from the deep south to the southeast U.S.



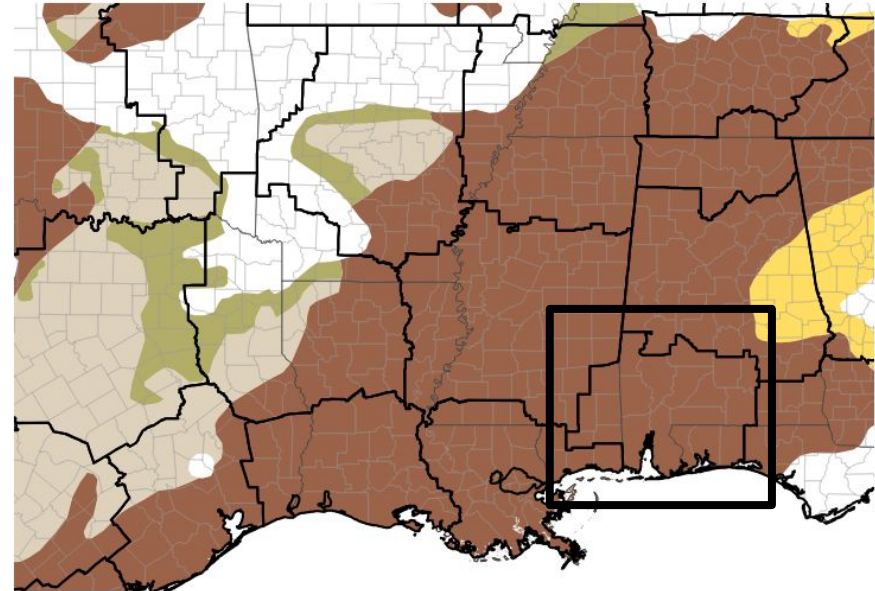


# Drought Outlook

The latest monthly and seasonal outlooks can be found on the [CPC homepage](#)

- Drought is favored to persist over the entirety of the local area through the month of November.
- Indications in the longer term outlook, closing out 2023 and entering the beginning of 2024, reflects an improvement or perhaps an end to drought.

## 1-Month Drought Outlook



Drought Is Predicted To...



Source(s): Climate Prediction Center; image courtesy of Drought.gov

Data Valid: 10/31/23

### Links to the latest:

[Climate Prediction Center Monthly Drought Outlook](#)

[Climate Prediction Center Seasonal Drought Outlook](#)



National Oceanic and Atmospheric Administration  
U.S. Department of Commerce

National Weather Service  
Mobile/Pensacola