

MRX Data Viewer

Quick Start Guide

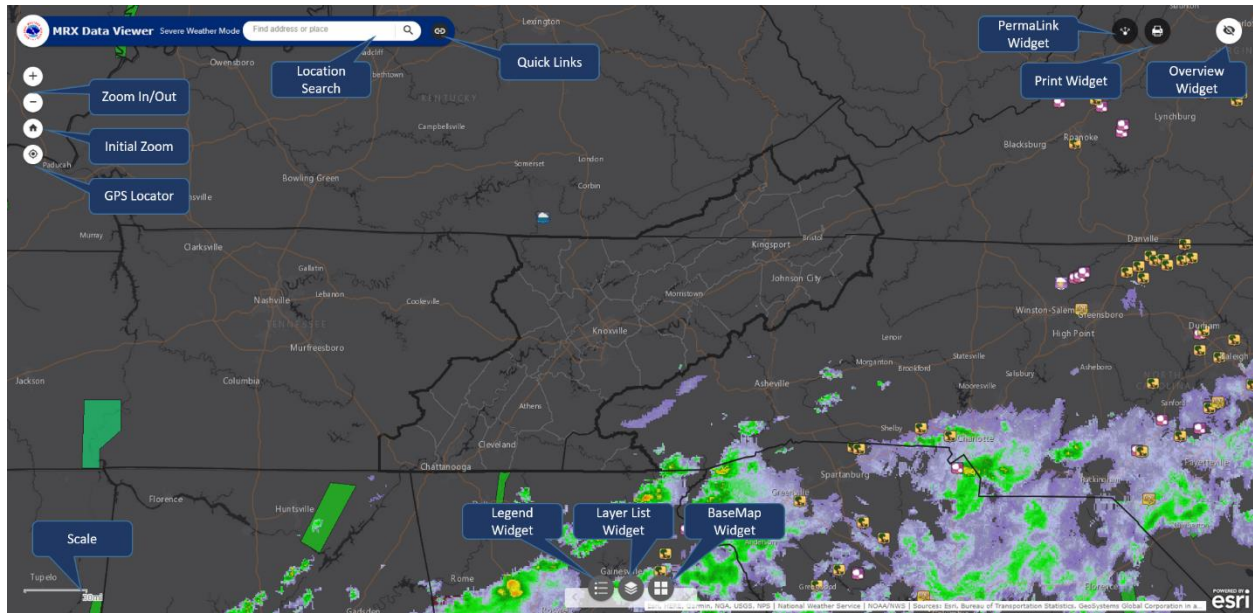


Figure 1: Overview of MRX Data Viewer map layout.

Scroll Down for Notable Options

Widget/Feature Listing:

1. Zoom In/Out: Clicking either the “+” or “-” icon will zoom the map in or out respectively.
2. Initial Zoom: Upon panning or zooming the map throughout use, you can click this button to reset the map to as it were when loaded.
3. GPS Locator: If you are on a GPS enabled device, you can click this button to plot your location on the map.
4. Location Search: Typing an address or landmark in this search bar and clicking the spyglass icon (or pressing enter) will initiate a search. Upon successfully finding the searched location, the map will zoom to that location.

5. **Quick Links (Figure 2):** Clicking the “Chain Link” icon will open a dropdown of useful links.

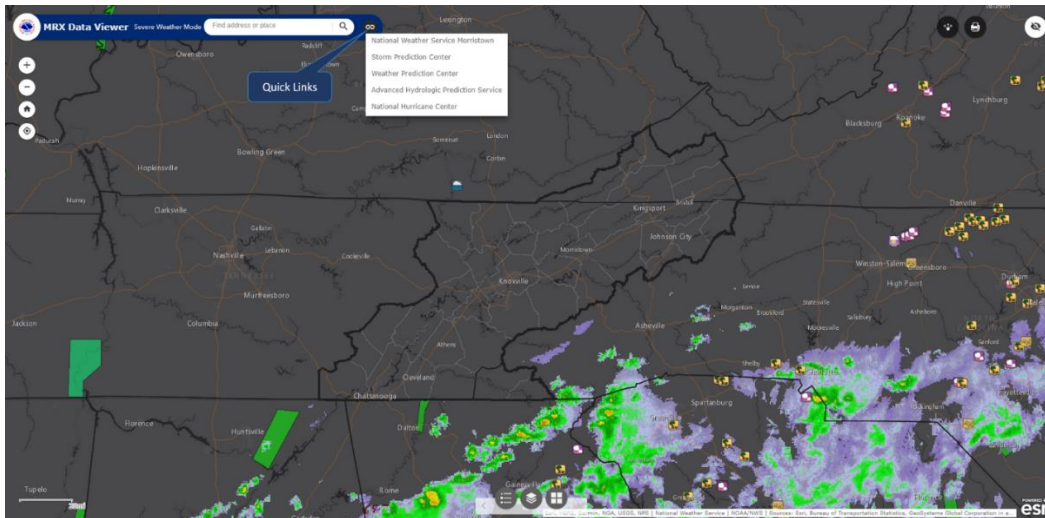


Figure 2: Screen shot of MRX Data Viewer with Quick Link dropdown.

6. **PermaLink Widget (Figure 3):** This option is useful if you would like to load the map using a bookmark feature pre-zoomed on a location. To use this widget, locate the map to the desired preset zoom/location, open the widget, copy/paste the “shortened” shareable link to a new browser window/tab and press enter. Once the new page loads you can bookmark that link. From that point forward the map will load to the preset zoom/location.

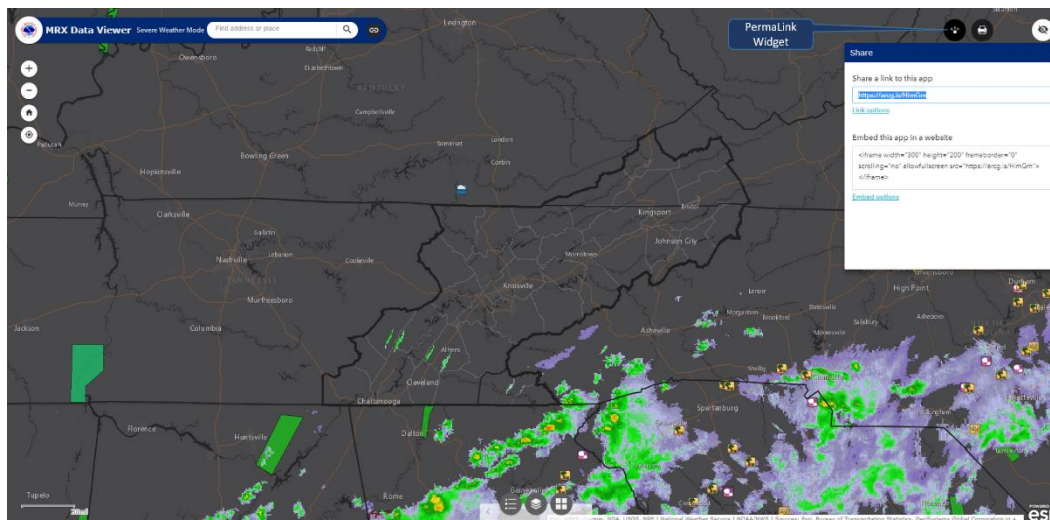


Figure 3: Screen shot of MRX Data Viewer with PermaLink Widget opened (shareable link highlighted).

7. **Print Widget:** Allows the you to export screenshots as PDF.
8. **Overview Widget (Figure 4):** This widget allows you move the map around on larger scales using a regional viewing philosophy.

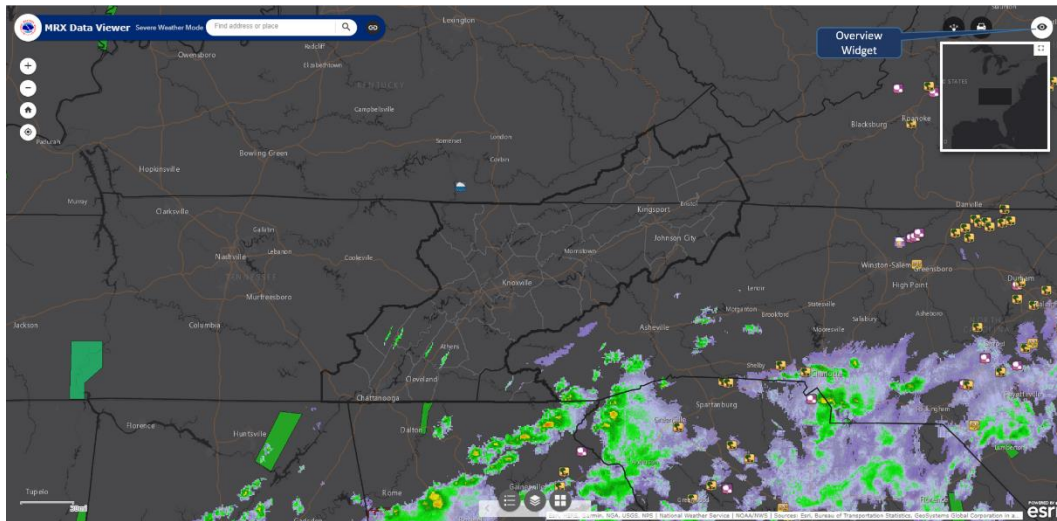


Figure 4: Screen shot of MRX Data Viewer with Overview Widget opened.

9. **Legend Widget (Figure 5):** Open this widget to view the legend of any currently visible layer.

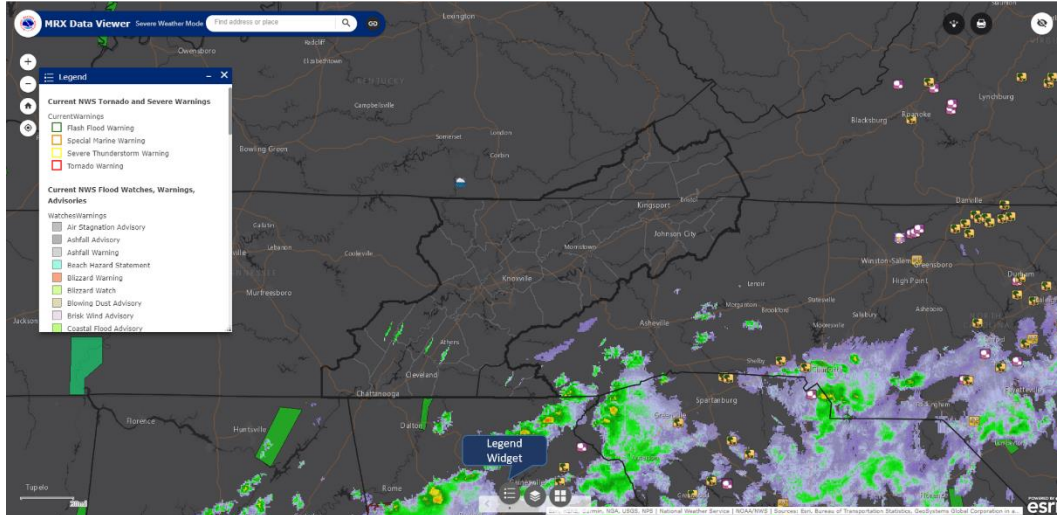


Figure 5: Screen shot of MRX Data Viewer with Legend Widget opened.

10. **LayerList Widget (Figure 6):** Use this widget to set the visibility of a layer.

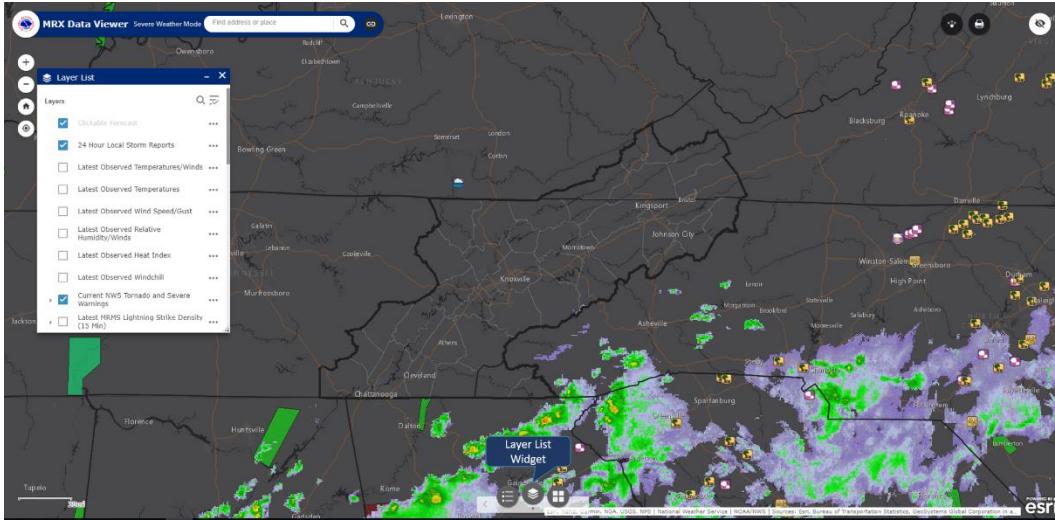


Figure 6: Screen shot of MRX Data Viewer with Layer List Widget opened.

11. **BaseMap Widget (Figure 7):** Allows you to select various basemaps such as topography and imagery.

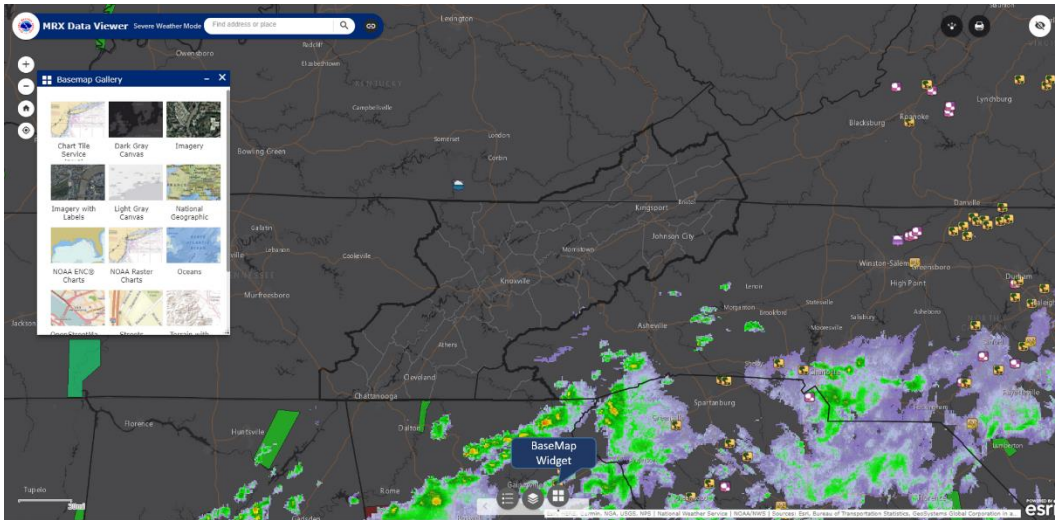


Figure 7: Screen shot of MRX Data Viewer with BaseMap Widget opened.

Notable Options:

1. Clickable Public Weather Forecast (Figure 8): Zooming to county level and left clicking on the map will trigger a popup with three links. The first link will open a new tab loaded to the NWS “Point Click” forecast page, the second link is the NWS “Hourly Forecast Graph”, and the third link is the NWS “Hourly Forecast Table”. All three links will load forecast data for the point inside the highlighted 2.5km box. This layer is called “Clickable Forecast” and can be set to non-visible in the Layer List if so desired.

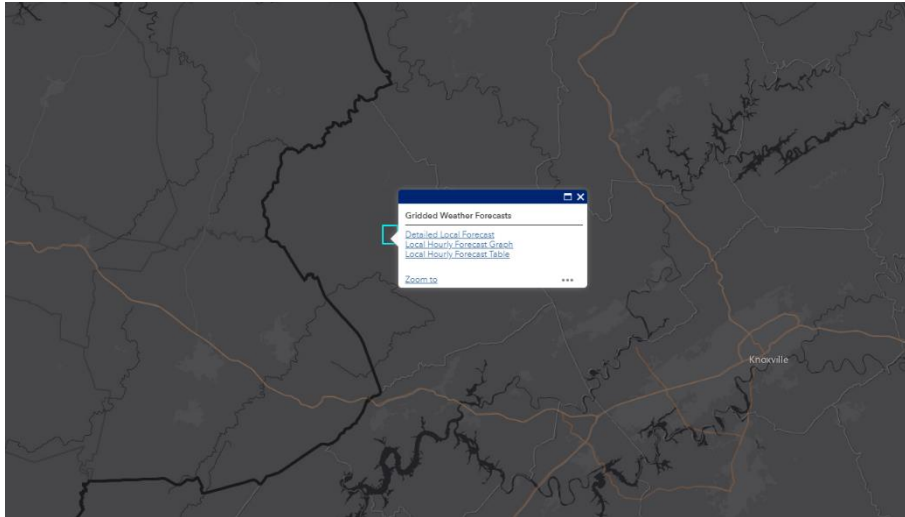


Figure 8: Screen shot of MRX Data Viewer with “Clickable Forecast”.

2. Clickable Zonal Fire Weather Forecast (Figure 9): Zooming to county level and left clicking on the map will trigger a popup with one link. This link will open a new tab loaded to the NWS “Zonal Fire Weather Forecast” page for the highlighted zone.

Available in Fire Weather Mode Only

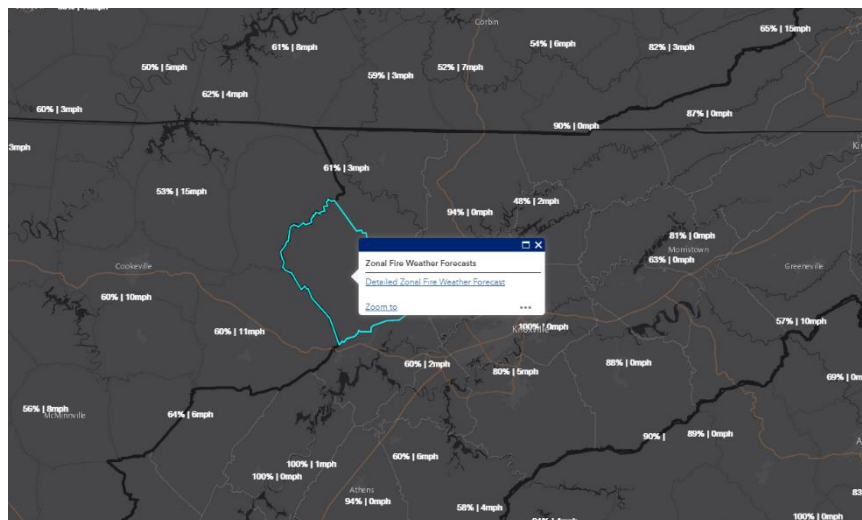


Figure 9: Screen shot of MRX Data Viewer with “Clickable Forecast”.