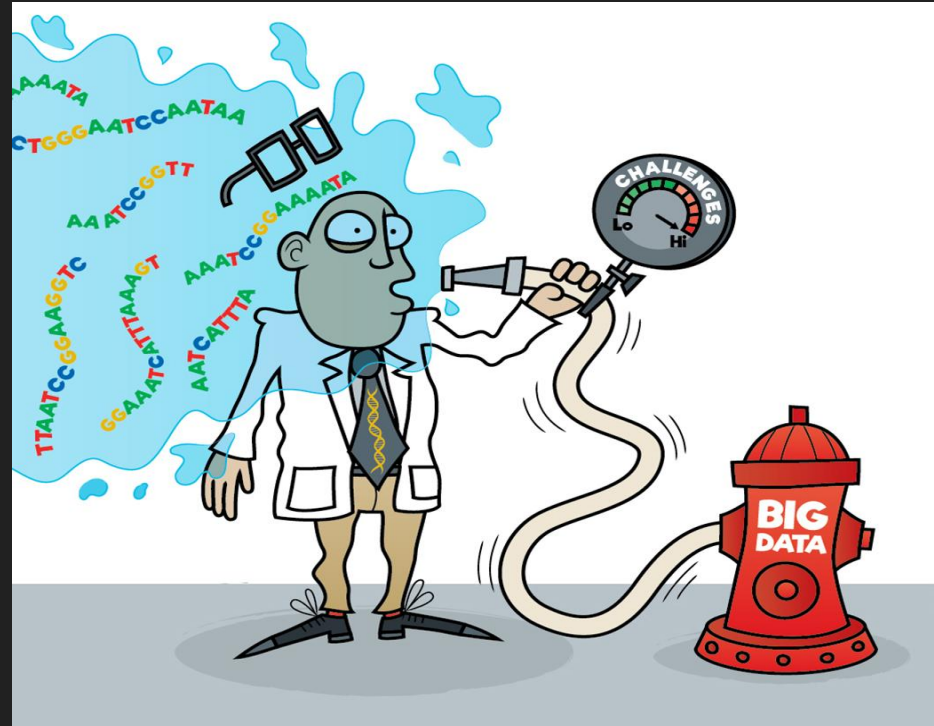




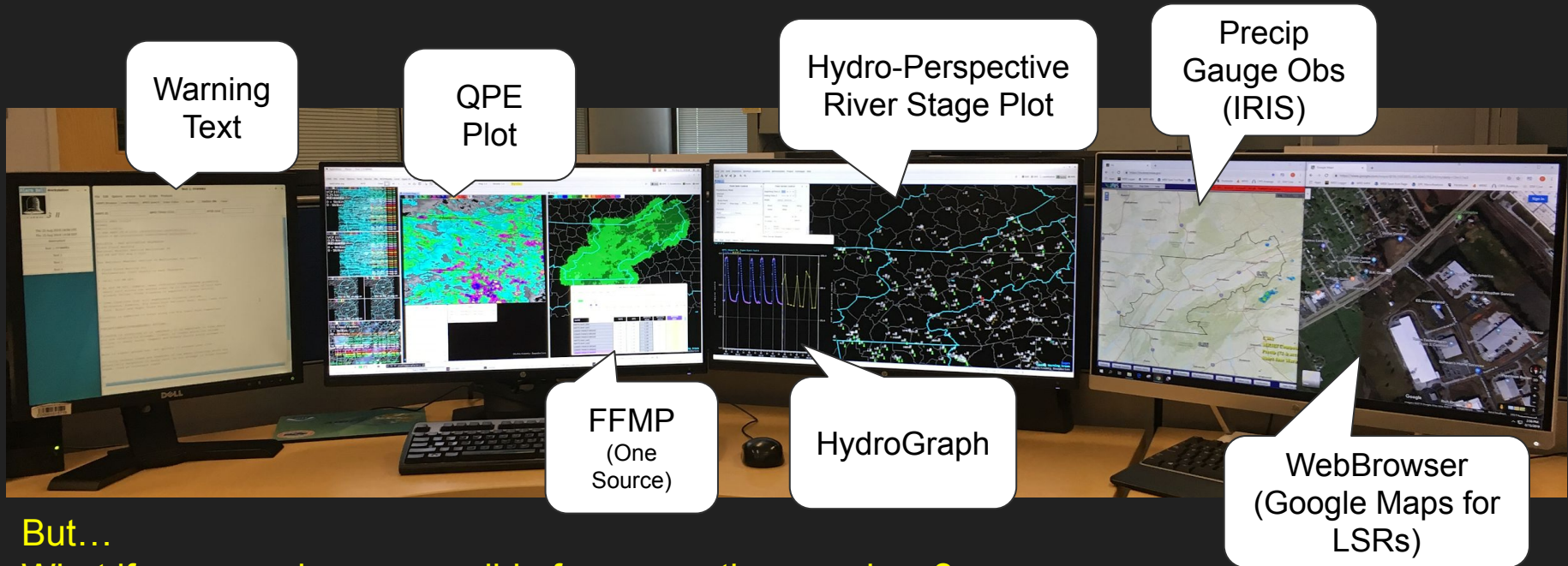
Charles (Danny) Gant Senior Forecaster WFO Morristown Tennessee



Ever felt like this?



Sample AWIPS Hydro Configuration



But...

What if you are also responsible for convective warnings?

What about multiple RDAs and FFMP Sources?

What about differing time scales?

What about "River Monitor" tables?

Why does this have to be so complicated???

- Only so much AWIPS real estate!
 - QPE Data
 - Multiple RDA's
 - Multiple FFMP Sources
 - Precip Gauge Data
 - AWIPS
 - IRIS
 - Internet
 - River Gauge Data
 - Mesonet Data
 - Warning Text
 - Spotters
 - LSR's



“Wouldn’t it be nice” if we could..



- Consolidate all hydro data to ONE application using only ONE monitor!
- Maybe that application could...
 - Be AWIPS independent
 - Use GIS mapping
 - Composite QPE from multiple RDAs
 - Toggle QPE and FFMP sources easily
 - Toggle between time domains easily
 - View river stage tables
 - View warning log tables
 - Archive data for training
 - And more...

5 Years and Many Revisions Later...

HydroViewer Advanced Version 5

(Firefox, Chrome, and Opera Browsers)

Time Controls

GIS Layers

Quick Zoom

Basin Controls

Precipitation Plot Controls

Showing Precip >= 0.10"

1HR 3HR 6HR 12HR 24HR 12z-12z

10% QPE Transparency

Last Updated: 2019-02-07 00:56:06Z

Archive Mode 20190207_0056

- Precip Obs
- QPE Image
- Basins
- Rivers
- Hydro Warn
- Conv Warn
- Watches

Map Layers

- Radar
- Temps
- Heat Index
- WindChill
- Winds
- Rel Humidity
- Highways
- NWS CWA's
- Spotters
- Fire
- Police
- Post
- Schools
- Others

Geo-Locator

Enter Address
 Enter Lat Enter Long

Locate Clear

Basin Plot Controls

QPE Ratio Diff FFG

Showing Ratio/Diff/QPE >= 1%/-2.50/0.01" FFG <= 10.00"

AutoFilter

DualPol Legacy HPE BIASHPE MRMS TopPerf WorstCase BestCase AllBlend SmartBlend

10% Basin Transparency

Map/Table Toggles

CWA MRX CHA TYS TRI LNP GSMNP Southeast US CONUS Western ATL Basin Full ATL Basin

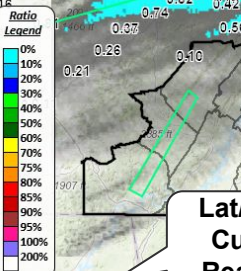
Map Basin Table Stream Table WWA Table NWChat Map Basin Table Stream Table WWA Table NWChat

Archive Mode

Basemap Toggle

Dual Synchronized Map Layout

Source Controls

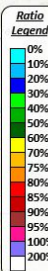


34.578, -84.243

Lat/Long Cursor Readout

Esri, HERE, Garmin, FAO, USGS, EPA NPS

36.637, -86.292



Esri, HERE, Garmin, FAO, USGS, EPA NPS

esri

What am I looking at, and where does it come from?

- Dual synchronized map layout
- Lat/Long Cursor readout
- **Live point precipitation, river stage, temperature, and wind chill plots via IRIS and local Hydro Database**
- Topographic and imagery basemaps
- Preset zoom features
- Weather data plotting
 - Radar, Watches, Warnings (via nowCOAST)
- Fire WX Spot forecasts via the NWS Spot Forecast page (JSON)
- **Basin/River Tables**
- **HydroGraph Plots**
- **Live plotting of aggregated basin FFG/QPE from all raw FFMP sources**
 - Ratio and Difference
- **Live QPE imagery from all AWIPS sources (except HPE and BiasHPE)**
- Additional (Derived) basin and QPE imagery sources
 - **WorstCase/BestCase/ AllBlend**
 - **Top Performer**
 - **SmartBlend**
- User selectable filtering of precipitation point and basin plotting
- **Audible threshold alerts (basin ratio and river stage thresholds)**
- **Multiple RDA composite**

Precipitation Plot Controls

Showing Precip >= 0.10"

1HR 3HR 6HR 12HR 24HR 12z-12z

10% QPE Transparency

Last Updated: 2019-02-22 13:47:35Z

Archive Mode 20190222_1348

Map Layers

- Precip Obs
- QPE Image
- Basins
- Rivers
- Hydro Warn
- Conv Warn
- Watches
- Radar
- Temps
- Heat Index
- WindChill
- Winds
- Rel Humidity
- Highways
- NWS CWA's
- Spotters
- Fire
- Police
- Post
- Schools
- Others
- LSRs
- Spot Fcsts
- Ob Sites

Geo-Locator

Enter Address

Enter Lat Enter Long

Locate Clear

Basin Plot Controls

QPE Ratio Diff FFG AutoFilter

Showing Ratio|Diff|QPE >= 1%|2.50|0.01" FFG <= 10.00"

DualPol Legacy HPE BIASHPE MRMS TopPerf WorstCase BestCase AllBlend SmartBlend

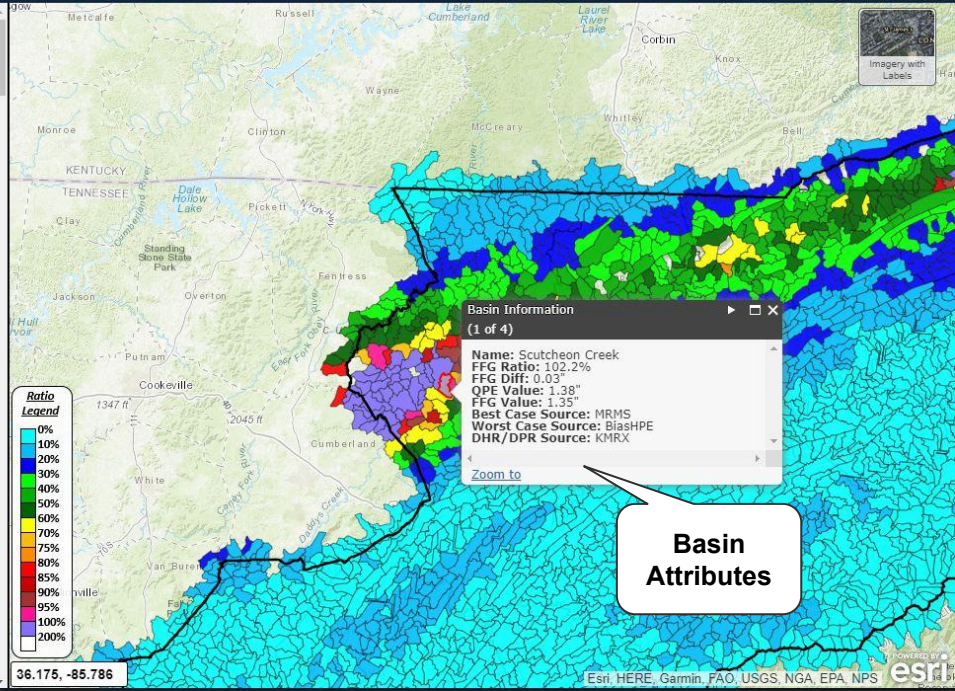
10% Basin Transparency

CWA MRX CHA TYS TRI LNP GSMNP Southeast US CONUS Western ATL Basin Full ATL Basin

Map Basin Table Stream Table WWA Table NWSChat Map Basin Table Stream Table WWA Table NWSChat

Basin Name	QPE	FFG	Ratio	Diff
Cox Branch	2.20	1.18	186.4%	1.02
Obed River	1.96	1.06	184.9%	0.90
Tom Branch	1.91	1.06	180.2%	0.85
Clear Creek	2.18	1.22	178.7%	0.96
Lyons Branch	2.07	1.18	175.4%	0.89
White Creek	2.03	1.18	172.0%	0.85
White Creek	1.94	1.14	170.2%	0.80
Little Clear Creek	2.08	1.23	169.1%	0.85
White Creek	1.90	1.14	166.7%	0.76
White Creek	1.93	1.17	165.0%	0.76
Otter Creek	1.72	1.08	159.3%	0.64
Hegler Branch	1.91	1.21	157.9%	0.70
Clear Creek	1.94	1.29	150.4%	0.65
Obed River	1.87	1.26	148.4%	0.61
Clear Creek	1.86	1.26	147.6%	0.60
Mill Branch	1.80	1.22	147.5%	0.58
Obed River	1.88	1.28	146.9%	0.60
Shell Creek	1.85	1.27	145.7%	0.58
Toms Branch	1.70	1.18	144.1%	0.52
Bobs Creek	1.79	1.30	137.7%	0.49
Long Branch	1.71	1.26	135.7%	0.45
Stony Creek	1.40	1.06	132.1%	0.34
Obed River	1.77	1.37	129.2%	0.40
Rock Creek	1.69	1.31	129.0%	0.38
Little Rock Creek	1.69	1.34	126.1%	0.35
Dry Creek	1.77	1.42	124.6%	0.35
Cove Creek	1.77	1.42	124.6%	0.35
Allen Branch	1.49	1.24	120.2%	0.25

Basin Table Active



Precipitation Plot Controls

Showing Precip >= 0.10"

1HR 3HR 6HR 12HR 24HR 12z-12z

10% QPE Transparency

Last Updated: 2019-02-22 13:47:35Z

Archive Mode 20190222_1348

Stream Table Active

Map Layers

- Radar
- NWS CWA's
- Spotters
- LSRs
- Spot Fcsts
- Ob Sites
- Temps
- Fire
- Police
- Post
- Schools
- Others
- Heat Index
- WindChill
- Winds
- Rel Humidity
- Highways

Geo-Locator

Enter Address
Enter Lat Enter Long

Locate Clear

Basin Plot Controls

QPE Ratio Diff FFG AutoFilter

Showing Ratio/Diff/QPE >= 1% -2.50/0.01" FFG <= 10.00"

DualPol Legacy HPE BIASHPE MRMS
TopPerf WorstCase BestCase AllBlend SmartBlend

10% Basin Transparency

CWA MRX CHA TYS TRI LNP GSMNP Southeast US CONUS Western ATL Basin Full ATL Basin

Map Basin Table Stream Table WWA Table NWSChat Map Basin Table Stream Table WWA Table NWSChat

Show HG Show HP

Stream Name	County	Ac/Mi/Mo/Ma	Current Level	Upgrade Departure
Active Warning Advisory				
NEPT1: Newport Tn	Cocke	6/8/10/12	8.11	-1.89
TAZT1: Tazewell Tn	Claiborne	10/12/16/21	12.54	-3.46
CHCG1: Keiths Mill Near Dalton	Whitfield	14/16/28/32	19.55	-8.45
CHKT1: Chickamauga Tn	Hamilton	16/18/22/27	17.98	-3.66
ARTT1: Arthur Tn	Claiborne	15/17/22/26	16.82	-3.66
WHTT1: Whitwell Tn	Marion	12/14/18/19	13.64	-3.66
SFYV2: Speers Ferry Va	Scott	16/18/28/32	15.47	-3.66
CLVV2: Cleveland Va	Russell	12/14/19/24	9.05	-3.66
JNSV2: Jonesville Va	Lee	15/18/30/35	7.69	-3.66
SCKV2: Stoney Creek Above Fort Blackmore	Scott	4/6.5//	4.40	-3.66
TMVN7: Tomotla	NC	6/12/13/14	7.29	-4.71
OAKT1: Oakdale Tn	Morgan	12/27/28/30	11.97	-0.03
GATV2: Gate City Va	Scott	10/12/15/18	9.54	-0.46
NWPT1: Newport Tn	Cocke	8/10/16/20	6.77	-1.23
CPHT1: Copperhill Tn	Polk	6/8/12/14	4.71	-1.29
RVL1: Rogersville	Hawkins	5/7/8/9	3.58	-1.42
BCDV2: Big Stone Gap - Big Cherry Dam	Wise	46/48//	44.10	-1.90
TWNT1: Little River At Townsend	Blount	6/8//	3.99	-2.01
EZBT1: Watauga River At Elizabethton	Carter	7/8.5/11.5/14	4.89	-2.11
BMCV2: Big Moccasin Creek At Gate City	Scott	6/8.5//	3.80	-2.20
DOET1: Elizabethton	Carter	5/8/9/10	2.72	-2.28
FTBV2: Clinch River At Fort Blackmore	Scott	10/12//	7.30	-2.70
HJBT1: Gatlinburg	Sevier	7/8//	3.55	-3.45
BCBV2: Beaver Creek At Bristol	City of Bristol	10/12//	5.37	-4.63
SNCV2: Stone Creek At Pennington Gap	Lee	10/12//	5.20	-4.80
MYVT1: Little River At Maryville	Blount	15/18/21/24	10.13	-4.87
SEVT1: Sevierville Tn	Sevier	10/14/14/16	4.94	-5.09

Automated Stream Alert

Important Note!

Check your NEPT1: Newport Tn stream levels, partner!

Attributes

Location ID = TMVN7
Value = 7.29
Valid Time = 2019-02-22 13:31:00Z
Action Stage = 6
Minor Flood = 12
Moderate Flood = 13
Major Flood = 14
Current Stage Category = Action
Departure From Upgrade = -4.71
HydroGraph Page = [Open in New Tab](#)

Impact Statements =
6 (ft) : ALTHOUGH WELL BELOW OFFICIAL FLOOD STAGE, CAMPGROUNDS AND BUILDINGS DOWNSTREAM WILL HAVE PROBLEMS.
12 (ft) : PROPERTIES AND BUILDINGS IN THE FLOOD PLAIN ARE FLOODED AND MAY BE INACCESSIBLE. NEARBY FIELDS ARE FLOODED. THE CITY OF MURPHY BEGINS TO BE THREATENED.
13 (ft) : ROADS IN THE VICINITY OF THE GAGE AND DOWNSTREAM ARE CLOSED.

Stage Legend

- Black Normal
- Yellow Action
- Orange Minor
- Red Moderate
- Magenta Major

Stream Attributes with Impacts

Precipitation Plot Controls

Showing Precip >= 0.10"

1HR 3HR 6HR 12HR 24HR 12z-12z

10% QPE Transparency

Last Updated: 2019-02-22 13:47:35Z

Archive Mode 20190222_1348

Map Layers

- Precip Obs
- QPE Image
- Basins
- Rivers
- Hydro Warn
- Conv Warn
- Watches
- Radar
- Temps
- Heat Index
- WindChill
- Winds
- Rel Humidity
- Highways
- NWS CWA's
- Spotters
- Fire
- Police
- Post
- Schools
- Others
- LSRs
- Spot Fcsts
- Ob Sites

Geo-Locator

Enter Address

Enter Lat Enter Long

Locate Clear

Basin Plot Controls

QPE Ratio Diff FFG AutoFilter

Showing Ratio/Diff/QPE >= 1%|-2.50|0.01" FFG <= 10.00"

DualPol Legacy HPE BIASHPE MRMS TopPerf WorstCase BestCase AllBlend SmartBlend

10% Basin Transparency

CWA MRX CHA TYS TRI LNP GSMNP Southeast US CONUS Western ATL Basin Full ATL Basin

Map Basin Table Stream Table WWA Table NWSChat Map Basin Table Stream Table WWA Table NWSChat

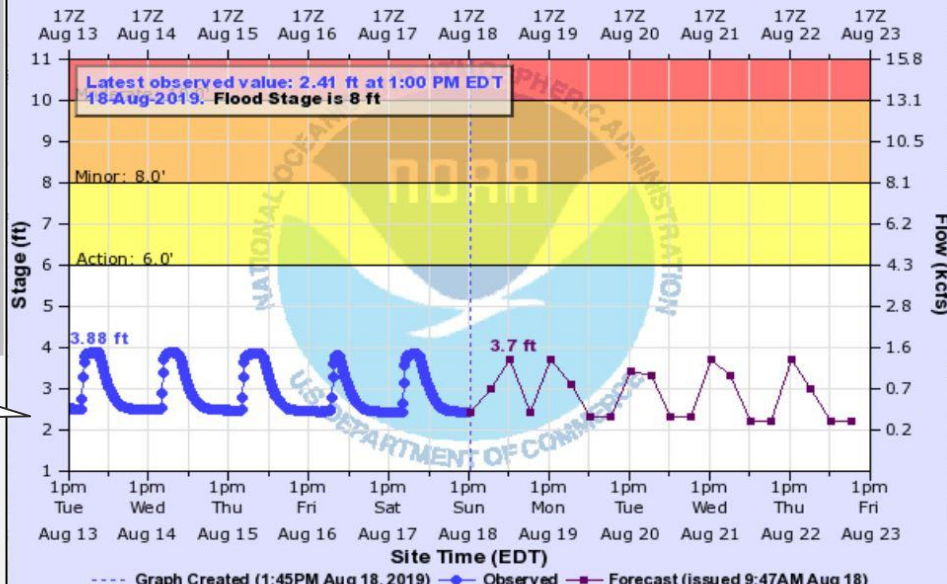
Show HG Show HP

Stream Name	County	Ac/Mi/Mo/Ma	Current Level	Upgrade Departure
Active Warning Advisory				
NEPT1: Newport Tn	Cocke	6/8/10/12	8.11	-1.89
TAZT1: Tazewell Tn	Claiborne	10/12/16/21	12.54	-3.46
CHCG1: Keiths Mill Near Dalton	Whitfield	14/16/28/32	19.55	-8.45
CHKT1: Chickamauga Tn	Hamilton	16/18/22/27	17.98	-0.02
ARTT1: Arthur Tn	Claiborne	15/17/22/26	16.82	-0.18
WHTT1: Whitwell Tn	Marion	12/14/18/19	13.64	-0.36
SFYV2: Speers Ferry Va	Scott	16/18/28/32	15.47	-0.53
CLVV2: Cleveland Va	Russell	12/14/19/24	9.05	-2.95
JNSV2: Jonesville Va	Lee	15/18/30/35	7.69	-7.31
SCKV2: Stoney Creek Above Fort Blackmore	Scott	4/6.5//	4.40	-2.10
TMVN7: Tomotla	NC	6/12/13/14	7.29	-4.71
OAKT1: Oakdale Tn	Morgan	12/27/28/30	11.97	-0.03
GATV2: Gate City Va	Scott	10/12/15/18	9.54	-0.46
NWPT1: Newport Tn	Cocke	8/10/16/20	6.77	-1.23
CPHT1: Copperhill Tn	Polk	6/8/12/14	4.71	-1.29
RVL1: Rogersville	Hawkins	5/7/	4.42	
BCDV2: Big Stone Gap - Big Cherry Dam	Wise	46/		
TWNT1: Little River At Townsend	Blount	6/		
EZBT1: Watauga River At Elizabethton	Carter	7/8.5/		
BMCV2: Big Moccasin Creek At Gate City	Scott	6/		
DOET1: Elizabethton	Carter	5/8/		
FTBV2: Clinch River At Fort Blackmore	Scott	10/12//	7.30	-2.70
HJBT1: Gatlinburg	Sevier	7/8//	3.55	-3.45
BCBV2: Beaver Creek At Bristol	City of Bristol	10/12//	5.37	-4.63
SNCV2: Stone Creek At Pennington Gap	Lee	10/12//	5.20	-4.80
MYVT1: Little River At Maryville	Blount	15/18/21/24	10.13	-4.87
SEVT1: Sevierville Tn	Sevier	10/14/14/16	4.94	-5.09

HydroGraph PopUp Via MouseOver Stream Name

PIGEON RIVER AT NEWPORT

Universal Time (UTC)



NEPT1(plotting HGIRG) "Gage 0" Datum: 1038.76'

Observations courtesy of US Geological Survey

User Testimonials...

Currently Installed in **12 WFOs in 4 NWS Regions...**

“It is a favorite among many of the staff for the efficient way data from many sources is displayed, leading to the ultimate goal of issuing timely and accurate hydrologic warnings.”

“identified long-standing deficiencies in legacy FFM & P tools and, for the first time, made mitigation of those deficiencies a priority.”

“gives me a more knowledgeable grip and confidence in the event situational awareness.”

“game changer for flood/flash flooding monitoring.”

“Finally, a place where FFMP data from multiple sources could be compared and combined easily in one place.”

“extremely valuable tool for monitoring a wide variety of ongoing flooding hazards.”

“5/5 Stars, would definitely recommend to a friend.”

Contact Me: Charles.Gant@noaa.gov

HydroViewer VLAB Wiki:

<https://vlab.ncep.noaa.gov/redmine/projects/nwsscp/wiki/HydroViewer>