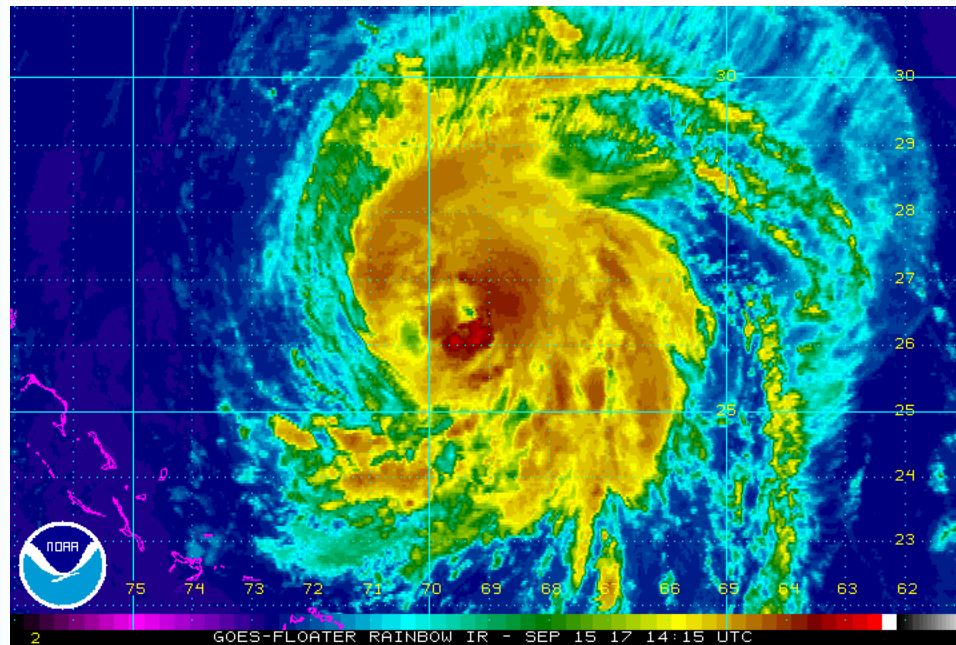


Tropical Cyclone Jose Briefing **CORRECTION**

Decision Support Briefing 1
As of Noon Friday, Sep. 15, 2017



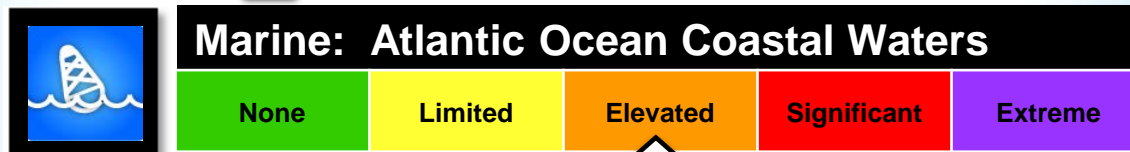
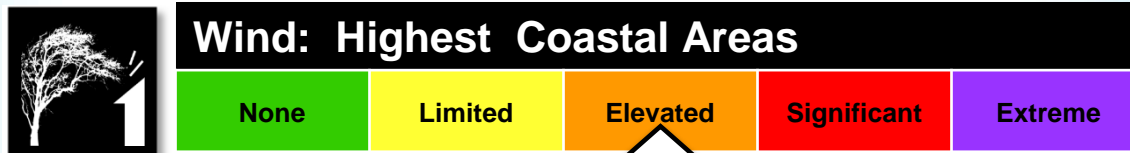
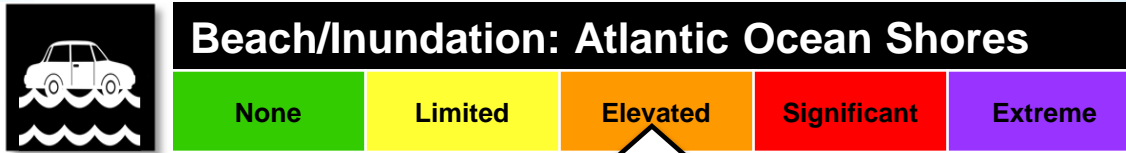


Main Points

Hazard	Impacts	Location	Timing
Rip Currents High Surf Beach Erosion	High Risk of Rip Currents Impacts to Surfers and First Responders Wash overs possible during high tide	Atlantic Ocean Beaches	Starting Sunday
Wind	20 to 30 percent chance of tropical storm force winds of 39-73 mph across Eastern Long Island; 10 to 20 pct. elsewhere Scattered power outages possible caused by downed tree limbs	Highest impacts along the coast with lesser damage further inland	2 am Tuesday – 2 am Wednesday
Rain	1 to 2 inches of rain may cause minor flooding of low lying and poor drainage areas	Mainly across Long Island and Southern CT	Late Monday through Tuesday Night
Marine	Tropical storm force winds of at least 34 kt possible across all coastal waters	Across all coastal waters	2 am Tuesday – 2 am Wednesday
Coastal Flooding	Minor to locally Moderate coastal flooding is possible.	Most Vulnerable Locations: Atlantic Ocean south shore back bays	Around the times of high tides Monday through Tuesday.



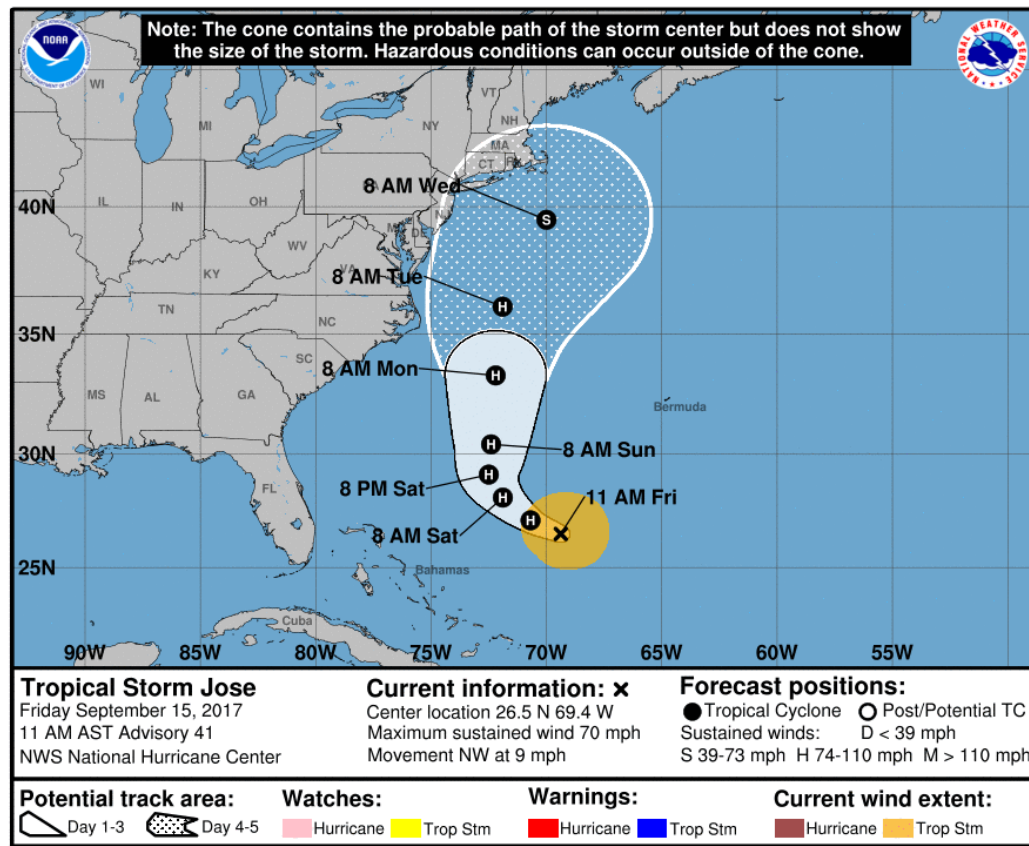
Summary of Greatest Impacts



Note:
Hazard impact level definitions can be found on our Hurricane Threats and Impacts Page <http://www.weather.gov/hti/>

Tropical Cyclone Jose

11 am NHC Forecast Advisory



- ✓ Forecast to increase to a Category 1 Hurricane later today as it turns North passing southeast of Long Island Late Tuesday – Early Wednesday as a Tropical Storm.
- ✓ Wind and surge impacts will be felt well outside the cone.

Surge/Inundation Hazard and Impacts

Surge/Inundation Threat:

- ✓ New Moon Sep. 19; astronomical tides running high
- ✓ Minor to locally Moderate coastal flooding *possible*, mainly across Atlantic Ocean south shore back bays.

Timing:

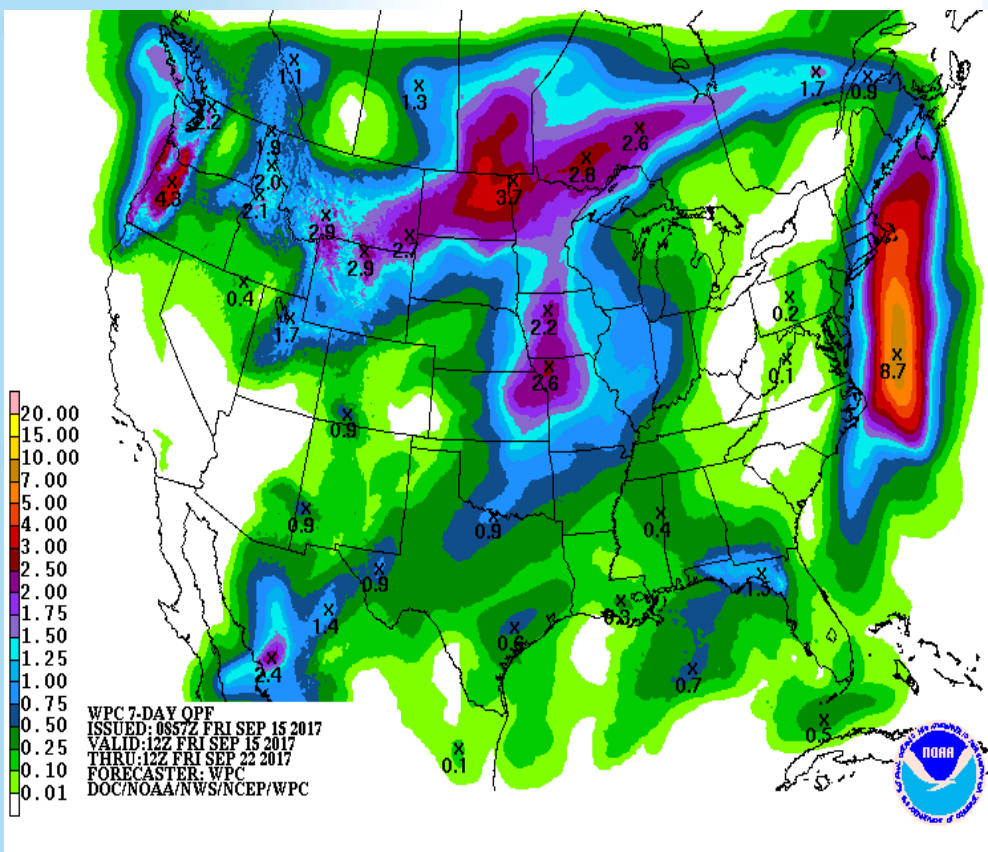
- ✓ Peak impacts will increase Monday through Tuesday around the times of high tide.

Potential Impacts for Coastal Flooding:

- ✓ Some inundation in shoreline communities and vulnerable areas.
- ✓ Elevated threat of property damage - Several low-lying coastal and shoreline roads will be impassable and a few could be washed out.



Rainfall Forecast



Rain Threat:

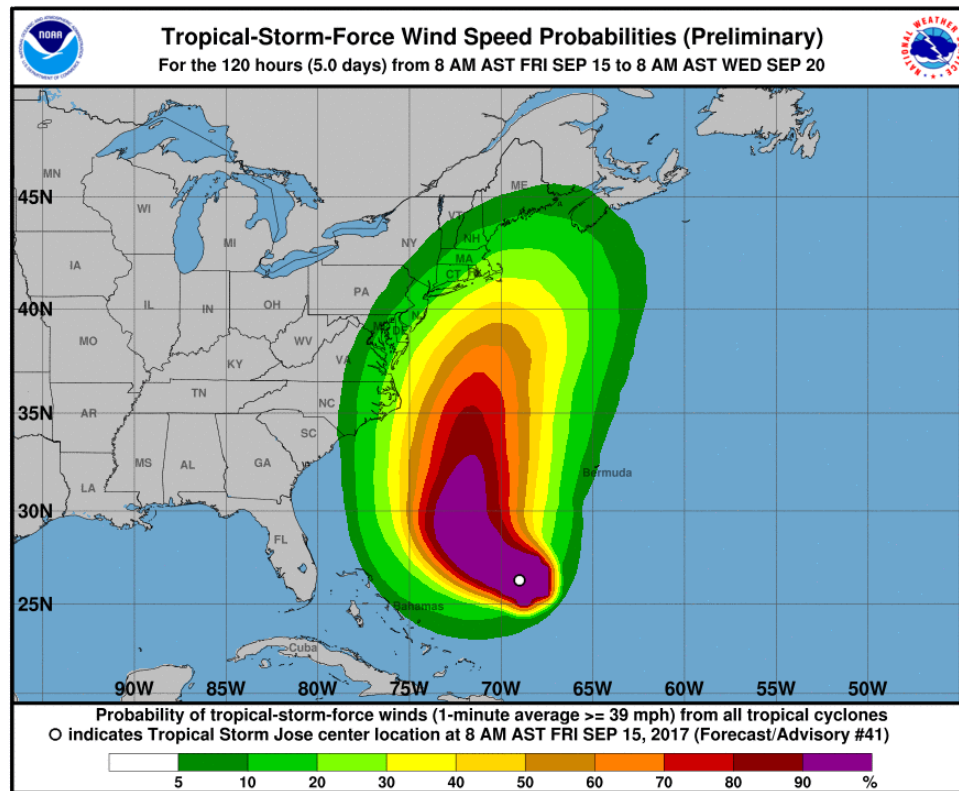
- ✓ Sharp west to east gradient of rainfall based on storm track; 1-2+ inches across Long Island and Southern CT.

Timing:

- ✓ Heaviest rain Monday Night through Tuesday Night. Minor urban flooding of low lying and poor drainage areas possible.

Wind Hazard and Impacts

11am NHC Forecast Advisory



Tropical Wind Threat:

- ✓ Tropical storm force winds possible, mainly east of NYC across Long Island and Southern CT.

Timing:

- ✓ IF Jose maintains its track, tropical storm force winds possible 2 am Tuesday through 2 am Wednesday.

Impacts

- ✓ Minor damage to trees with possible scattered power outages.

Forecast Uncertainties or Scenarios

- ✓ IF Jose moves further east than forecast, all impacts (wind, rain, and coastal flooding) will be less.
- ✓ IF Jose moves further west than forecast, tropical storm force winds, heavier rain and more significant coastal flooding will spread further west.
- ✓ The average NHC track errors at days 4 and 5 are about 175 and 225 miles, respectively.
- ✓ Because of differences in our prediction models, TIMING may also be off by Plus/Minus 12 hours

Event Summary

- ✓ REMEMBER that impacts occur outside of the forecast error cone.
- ✓ The NHC wind speed probability graphic shows the real potential of being impacted by a tropical storm.
- ✓ Increasing possibility of minor to locally moderate coastal flooding late Monday through Tuesday



Contact and Next Briefing Information



Next Briefing
When: Noon Saturday Afternoon
Method: Electronic Briefing

Briefing Webpage:
<http://www.weather.gov/okx/tropical>



Web:
<http://www.weather.gov/okx/>



Phone (public):
631-924-0517



E-mail:
okx.operations@noaa.gov



Facebook:
<http://www.facebook.com/NWSNewYorkNY>



Twitter:
<http://www.twitter.com/NWSNewYorkNY>



YouTube:
<https://www.youtube.com/user/NWSNewYorkNY>

Disclaimer: *The information contained within this briefing is time-sensitive, do not use after time month, date*

