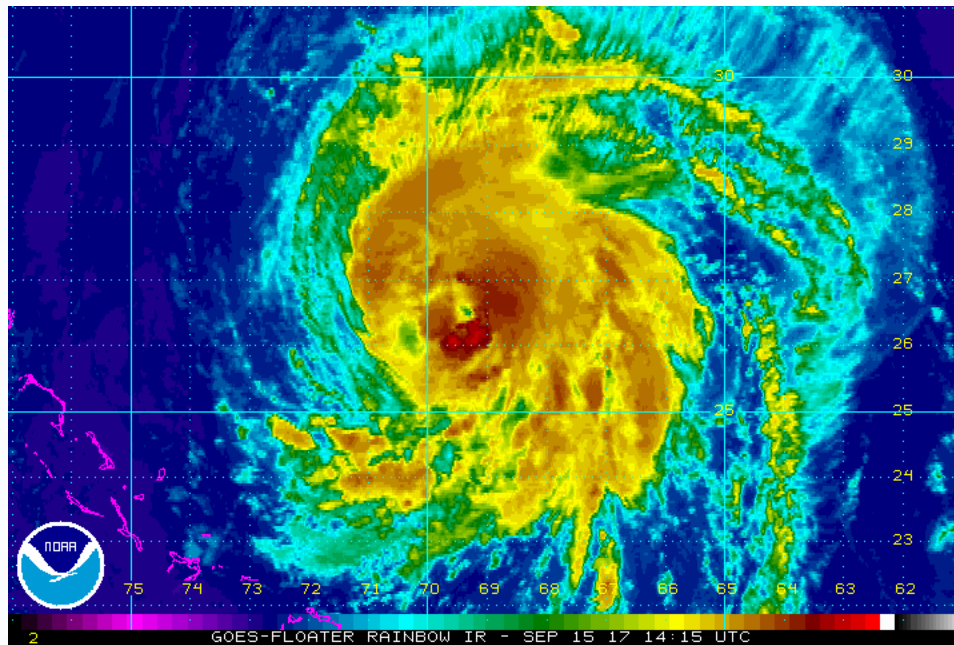


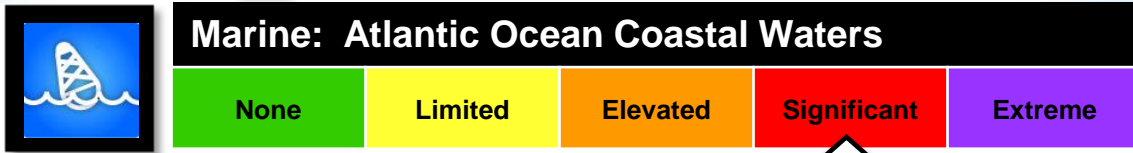
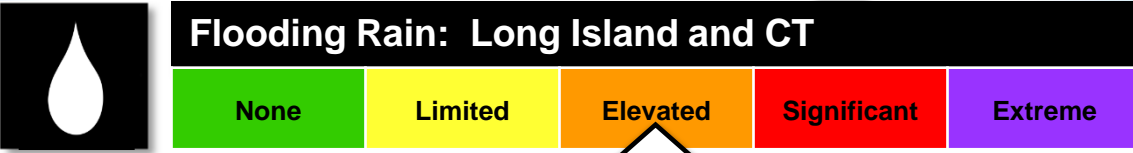
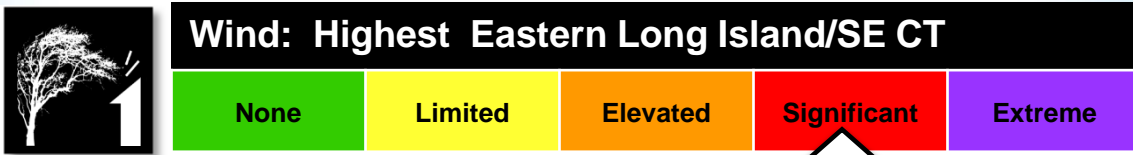
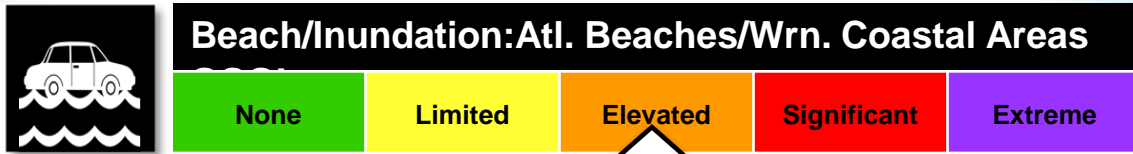
Tropical Cyclone Jose

Briefing

Decision Support Briefing 3
As of Noon Sunday, Sep. 17, 2017



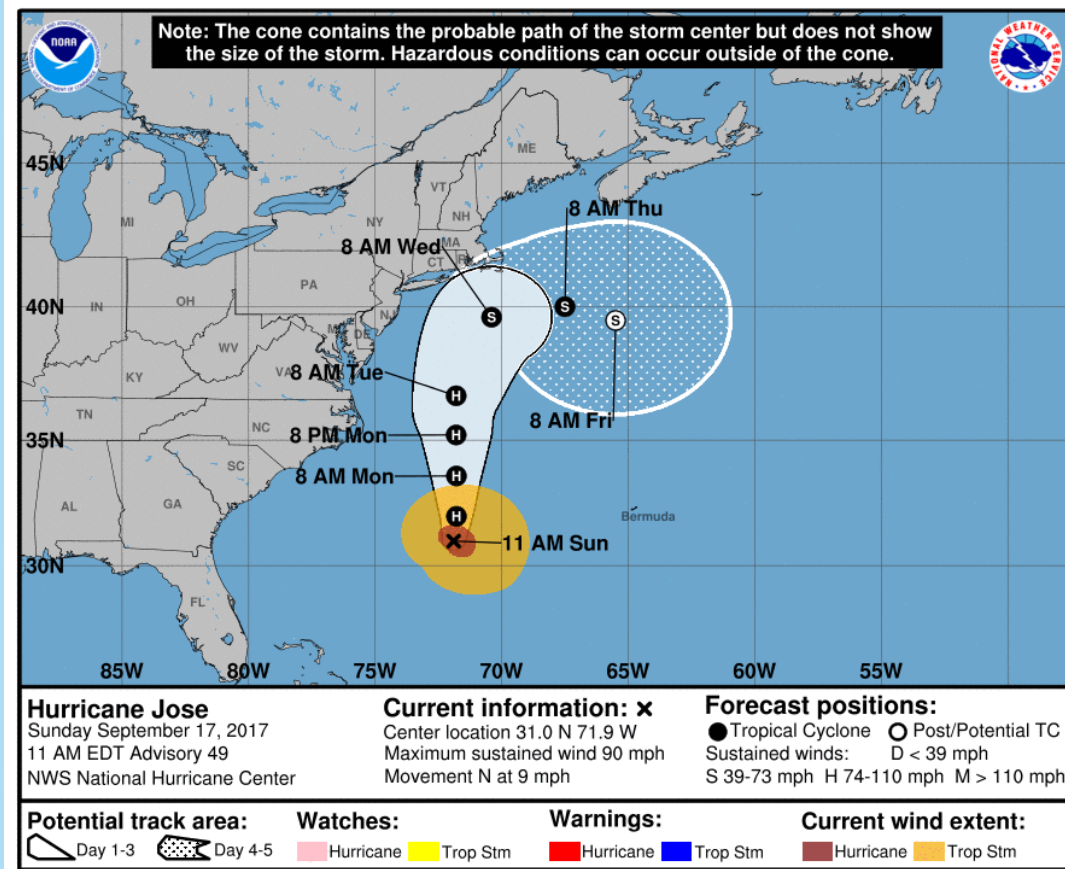
Summary of Greatest Impacts



Note:
Hazard impact level definitions can be found on our Hurricane Threats and Impacts Page <http://www.weather.gov/hti/>

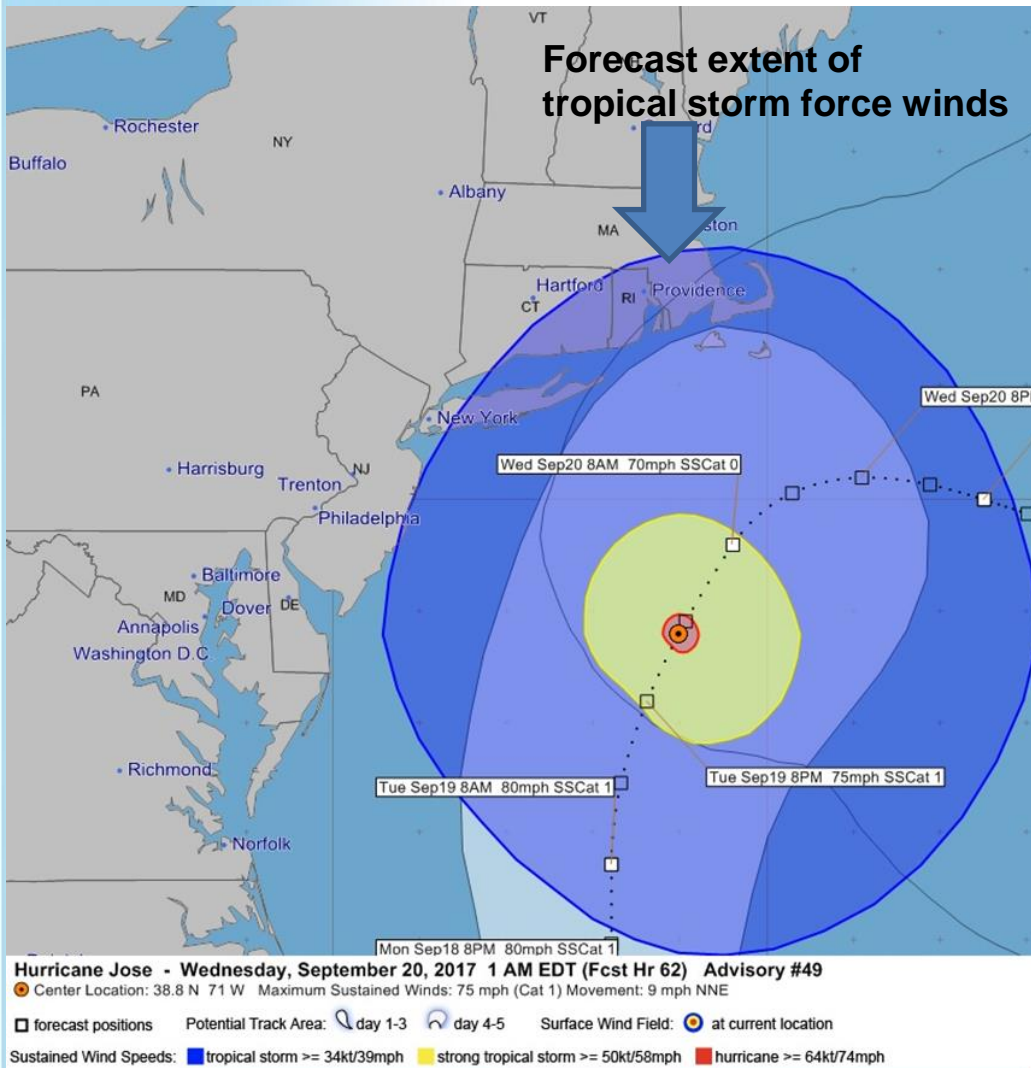
Tropical Cyclone Jose

11 am NHC Forecast Advisory



- ✓ Currently a Category 1 Hurricane passing southeast of Long Island Late Tuesday – Early Wednesday as a Tropical Storm.
- ✓ Wind and surge impacts will be felt well outside the cone – See next slide

Impacts Occur Well Away from the Center



Closet Approach:

- ✓ Approximately 120 miles southeast of Montauk Point and 200 miles southeast of NYC.
- ✓ Impacts to our area likely well outside of the forecast center (wind, rain and coastal impacts)

Surge/Inundation Hazard and Impacts

Surge/Inundation Threat:

- ✓ New Moon Sep. 19; astronomical tides running high
- ✓ Minor to Moderate coastal flooding *likely*, mainly across Atlantic Ocean south shore back bays, Western Long Island Sound, and Peconic and Gardiners bays.

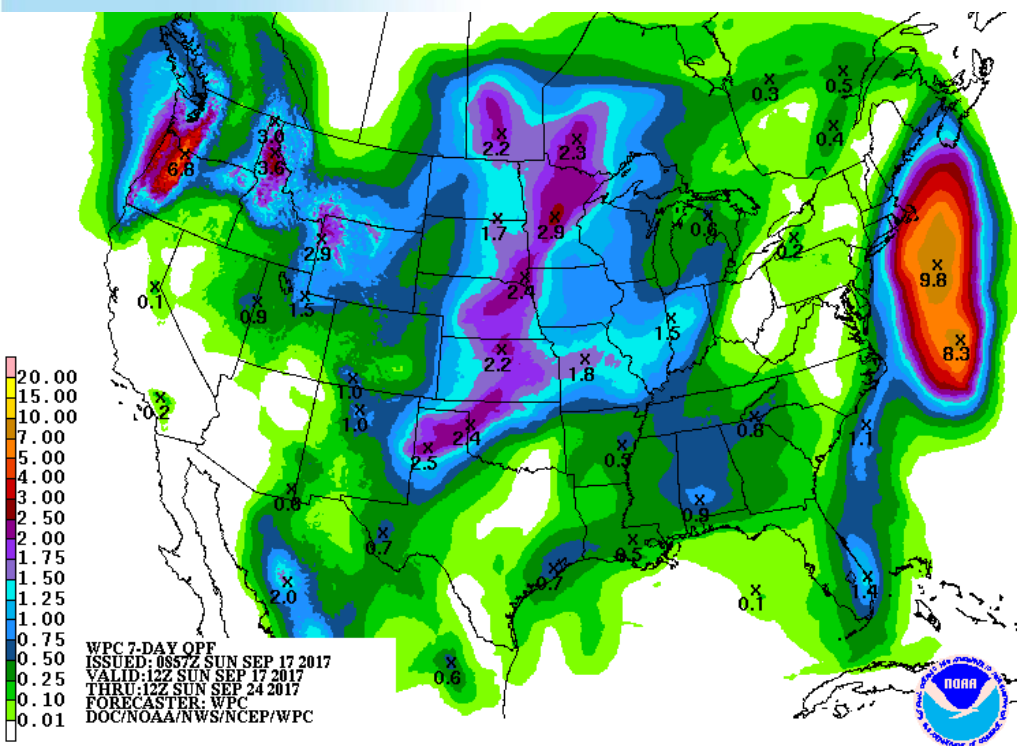
Timing:

- ✓ Peak impacts will be around the times of high tide late Tuesday into Wednesday.

Potential Impacts for Coastal Flooding:

- ✓ Some inundation in shoreline communities and vulnerable areas.
- ✓ Elevated threat of property damage - Some low-lying coastal and shoreline roads will be impassable.

Rainfall Forecast



Rain Threat:

- ✓ Sharp west to east gradient of rainfall based on storm track; 1-3 inches highest across Eastern Long Island and SE CT.

Timing:

- ✓ Heaviest rain Tuesday through Wednesday. Urban flooding of low lying and poor drainage areas possible.

Wind Hazard and Impacts

11am NHC Forecast Advisory

Tropical Wind Threat:

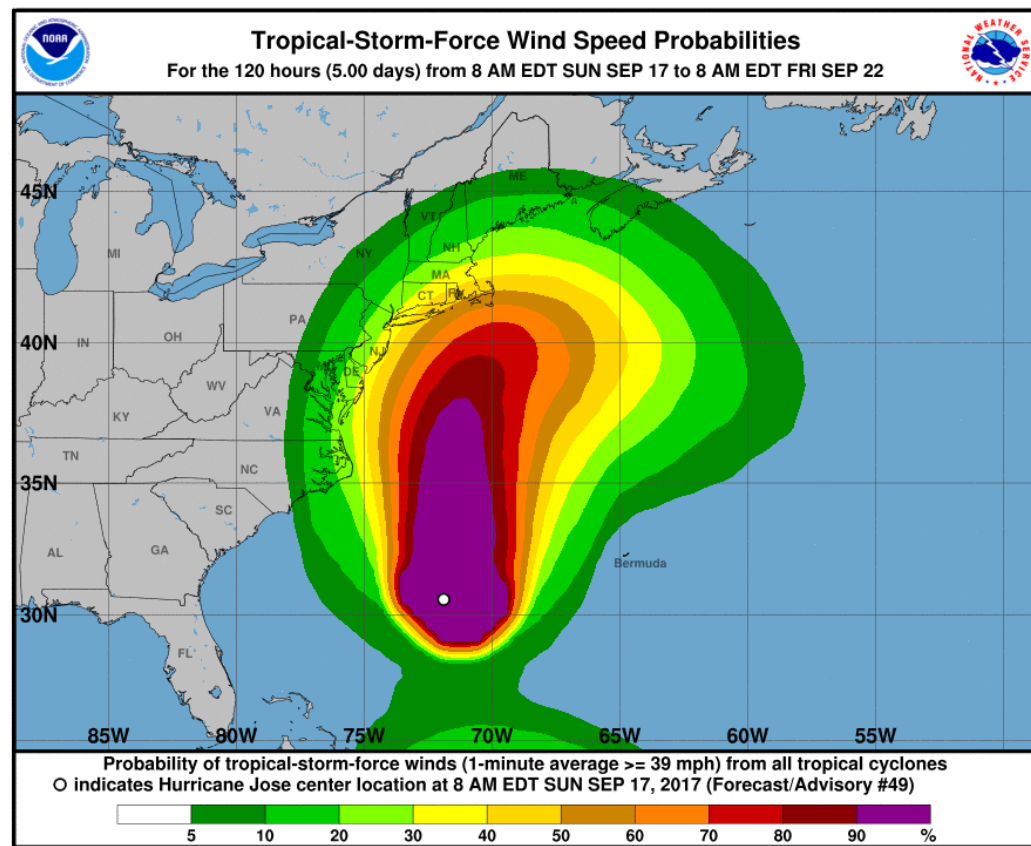
- ✓ Tropical storm force winds possible, more likely east of NYC across Long Island and Southern CT.

Timing:

- ✓ IF Jose maintains its track, tropical storm force winds possible 2 am to 2 pm Wednesday.

Impacts

- ✓ Minor damage to trees with possible scattered power outages; damage most likely over Eastern Long Island and SE CT.



Forecast Uncertainties or Scenarios

- ✓ IF Jose moves further east than forecast, all impacts (wind, rain, and coastal flooding) will be less.
- ✓ IF Jose moves further west than forecast, tropical storm force winds, heavier rain and more significant coastal flooding will spread further west.
- ✓ The average NHC track errors at days 2 and 3 are about 75 and 125 miles, respectively.
- ✓ Because of differences in our prediction models, TIMING may also be off by Plus/Minus 12 hours

Event Summary

- ✓ REMEMBER that impacts occur outside of the forecast error cone (see slide 4).
- ✓ The NHC wind speed probability graphic shows the real potential of being impacted by a tropical storm.
- ✓ There are increasing chances of tropical storm force winds across Eastern Long Island and Southeast Connecticut
- ✓ Increasing possibility of minor to moderate coastal flooding late Tuesday into Wednesday