

## Lindenhurst:

**At 7.7 ft NDVD / 7.3 ft MLLW / 5.8 ft MHHW** (10/29/2012 10pm)

Widespread record coastal flooding occurring along the Great South Bay exceeding the FEMA 100 to 500 year base flood elevations. Peak storm tides surpassed all previously documented high water marks, including the October 31, 1991 and December 11, 1992 nor'easters and the recorded peaks from Hurricane Irene in 2011. The storm tide levels along the Southwest Suffolk County shore resulted from a peak storm surge of about 6 to 7 feet that coincided with normal high tides. This resulted in up to 2 to 5 feet of inundation of communities in and along Great South Bay. The majority of locations south of Montauk Highway from Amityville to Islip were completely inundated, with areas east to Brookhaven inundated several blocks inward from the shoreline. Areas of major residential damage were experienced across low lying areas such as Amityville, Lindenhurst, and Babylon. The most widespread major damage was experienced along the barrier beach communities, where the surge was amplified by the runup and setup from 15 to 20 foot breakers along the Atlantic Ocean coast. On Fire Island, up to 30 ocean front homes and other ocean facing structures, such as boardwalks and piers, were completely destroyed by the storm tide and battering waves. A full breach of the barrier island also occurred just west of the Smith Point Bridge on Fire Island. In Robert Moses State Park, partial roadway collapses occurred along the south side of water tower and eastbound park road. Severe erosion occurred throughout the park as well as extensive boardwalk damage.

**At 5.4 ft NGVD / 5.0 ft MLLW / 3.5 ft MHHW**

Lindenhurst - 2 ft inundation along [5<sup>th</sup> and 7<sup>th</sup> streets](#) (10/29/2012 11am)



**At 5.3 ft NGVD / 4.9 ft MLLW / 3.4 ft MHHW**

Hampton Bays - [Dune road in Hampton bays](#) under 3 ft of water. (845am 8/28/2011)

Southampton- Immediate bay front streets and property inundated with a few feet of water. (900-1000am 8/28/2011)

Lindenhurst- Most of town of Lindenhurst. (908am 8/28/2011)  
White capped water with 1 to 2 ft inundation starting as early as 630 am on [South Ninth Street](#).

[Babylon](#) – Inundation of houses and street alongside canals/dock with a couple of feet of water. (900-1000am 8/28/2011)

[Bayshore](#) - Inundation of houses and street south of South Street with at least a couple of feet of water.

[Smith Point Park](#) – Overwash at Smith Point Park into the parking lot. (1000 am 8/28/2011)

Robert Moses State Park – [Burma Rd](#) is covered by 18 inches of saltwater.  
[Davis Park Marina](#) inundated. (1029am 8/28/2011)

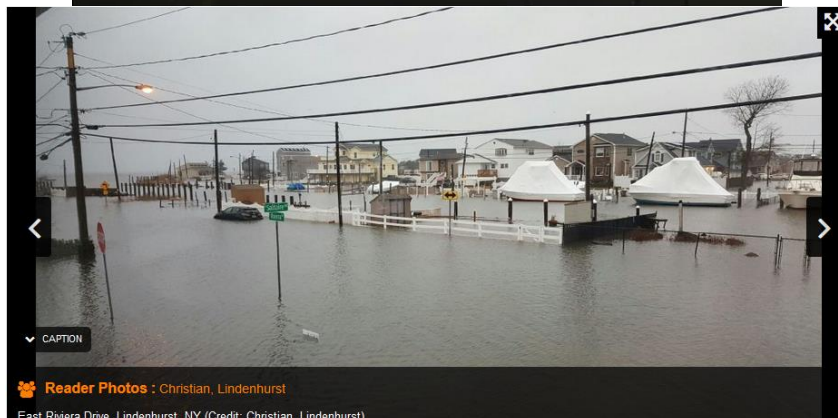
Patchogue – [Shorefront Park](#), [Sandspit Marina](#), [Mascot Dock](#) inundated with 1-2 ft of water and wave action.  
[Smith Street](#) and points to the south flooded 4 ft deep. (900-1030am 8/28/2011 )

[Mastic Beach](#) – Flooding as deep as 4 ft stretched 2000 ft inland from Moriches Bay. About a half mile area. (900-1030am 8/28/2011)

**At 4.5 ft NGVD / 4.1 ft MLLW / 2.6 ft MHHW**

[Lindenhurst](#) – (1/24/2017) Lindenhurst Village suffered significant flooding, which was exacerbated by the high tide early Tuesday. Village Clerk-Treasurer Shawn Cullinane said the Lindenhurst's department of public works had to close a number of streets when driving became difficult. As the water receded in the afternoon, the roads reopened.

2 to 3 ft of inundation on [East Riviera Drive in Lindenhurst](#)



▼ CAPTION

Reader Photos : Christian, Lindenhurst

East Riviera Drive, Lindenhurst, NY (Credit: Christian, Lindenhurst)

1 to 2 ft of inundation on [Knoll Street](#), [Orchard Street](#), [Shore Walk](#) and [Wellwood Avenue](#) in Lindenhurst (credit Riverhead Patch and News 12 LI)



1 to 2 ft of inundation on [Venetian Blvd](#) in Lindenhurst (credit News12 LI)





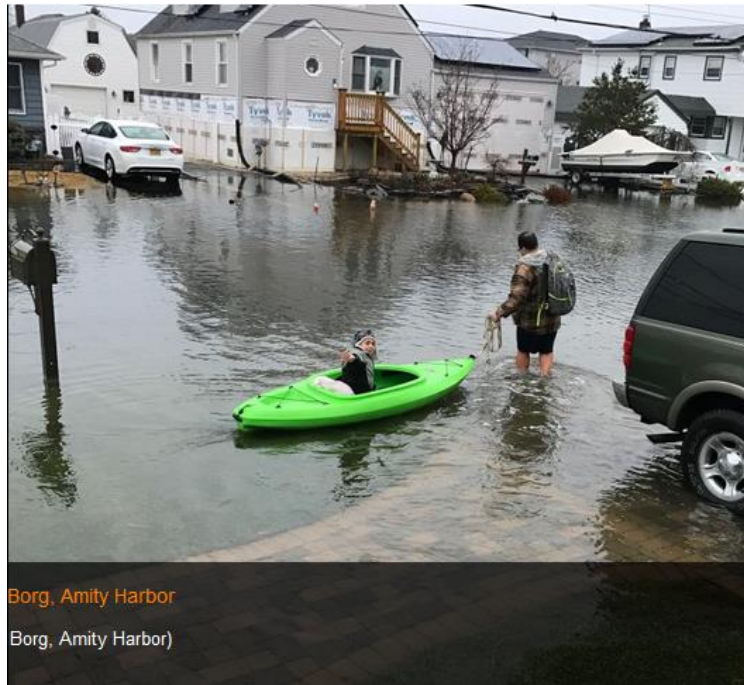
One land closed due to flooding on [westbound Montauk Highway between Washington Avenue and Shore Road](#).

[Bay Shore, West Islip](#) - (1/24/2017) Several areas abutting the Great South Bay suffered “real substantial flooding” of streets. Town crews were continued efforts to pump out flooded streets in waterfront communities in [Bay Shore](#) and [West Islip](#). Some streets closest to the bay were inundated with water and impassible. Some coastal residents experienced water up to their garages

1 to 2 ft of inundation along [waterfront in West Islip](#) (credit Riverhead Patch)



[Amity Harbor](#) – 1 to 2 ft of inundation for waterfront properties (credit Julie Borg News 12 LI). (1/24/2017)



Borg, Amity Harbor  
Borg, Amity Harbor)

[Babylon](#) – Major flooding as it was over the bulkheads but, not into many homes.

1 to 2 ft of inundation for waterfront properties on [West Harrison Avenue](#) (credit Shawn Brown News 12 LI) (1/24/2017)



Copaigue - [East & West Drives](#) totally inundated

Great River – [Bayard Arboretum](#) Riverwalk, Breezy Island and Woodland gardens are underwater. Some areas have 6-8FT of water inland of the bulkhead

[Hecksher State Park](#) - Major flooding in Field 6 and Field 4 picnic areas. Minor beach erosion

Atlantic beachfront from Nassau line to Fire Island Inlet- Suffered moderate loss of sand in the tens of thousands cubic yards of sand. The beach is flat no height left. Water got up to the dunes but only very minor dune loss. (1/23-24/2017) **w/ 15-18 ft@ 10 sec e ocean swells**

**At 4.3 ft NGVD / 3.9 ft MLLW / 2.4 ft MHHW**

Lindenhurst – Moderate to Major flooding in Lindenhurst. [Venetian Blvd and Bay Place](#).(L) Flooding thirty feet up driveway. [East Shore Rd and Garfield Place](#) (R) Roads impassable most of the day due to snow covered drainages. (1/23/2016) (2/9/2016)



at 4.2 ft NGVD / 3.8 ft MLLW / 2.3 ft MHHW...with 15 ft wave action at Ocean beaches

Lindenhurst

1 to 3 ft of water in streets adjacent to canals and streams from Amityville east to Babylon, including Lindenhurst. 10/12/2005

at 4.1 ft NGVD / 3.7 ft MLLW / 2.2 ft MHHW...

1 to 3 ft of inundation causing complete covering of waterfront roadways in South Babylon, South Copiague, South Lindenhurst, South Amityville, Mastic Beach, and Fire Island; as well as some minor inundation of homes in low-lying areas. In Copiague...entire south ends of [East Drive](#) and [West Drive](#) submerged including roadways (3/9/2013 8am)

Lindenhurst - 1 to 2 ft of flooding on corner of [Venetian Blvd and Bay Place](#) (1/10/2016)



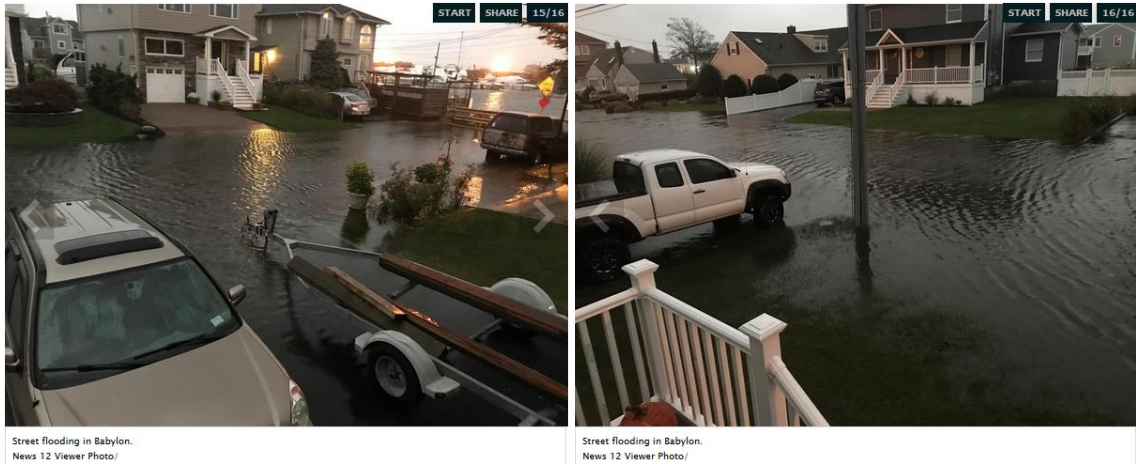
1 to 2 ft inundation in [Harding Avenue and E.Shore Rd](#) (10/30/2017)



1 ft of inundation on [South 8th Street](#) (10/30/2017)



Babylon- 1 to 2 ft inundation for canal adjacent streets, such as [West Harrison Avenue](#) (10/30/2017) (credit News 12 LI)



West Babylon – 1 ft inundation of canal front properties and roads. (1/10/2016)



Bayshore – Minor inundation of waterfront properties [south of South Street](#)

Gilgo Beach – Moderate erosion with the east wind ledge of sand being removed. **8-9 ft**  
**ese waves at 44065/44025** (1/10/2016)

at **4.0 ft NGVD / 3.6 ft MLLW / 2.1 ft MHHW** (10/27/2018)

Due to the astronomically high tides coming off the October 24th full moon, and generally 2 1/2 to 3 1/2 ft of surge from Easterly Gale to Storm force winds ramping up Friday Night into Saturday afternoon. This was the second tide of this event, so tidal piling was a definite factor as well, with 16 ft@10 sec easterly swells.

Lindenhurst – Water levels breached most of our bulkheads and so we experienced wide spread flooding south of Montauk Highway. On [Venetian Blvd](#) the tide didn't really spread over land until after 10 am Saturday however thinking that there was only 2 hrs until 1220 high tide it didn't seem that bad. At 1220 it was minor and thought we were out of the woods. I went to the window at

1pm and saw that the tide had doubled over land. It kept rising until 130 pm. It did go 30 ft up the driveway which is approximately 180 ft from the bay.

Due to the astronomically high tides coming off the October 24th full moon, and generally 2 1/2 to 3 1/2 ft of surge from Easterly Gale to Storm force winds ramping up Friday Night into Saturday afternoon. This was the second tide of this event, so tidal piling was a definite factor as well, with 16 ft @ 10 sec easterly swells.

Babylon - In the town of Babylon we had the normal flooding of low lying areas mostly roads through road drains but some canals did go over the bulkheads. Did not see anything different from other one day noreasters. The ocean coast did lose dune in the same spots as usual with height loss of sand on all of Gilgo beach. Overall it was a 4 on a 10 scale.

at 3.9 ft NGVD / 3.5 ft MLLW / 2.0 ft MHHW

Lindenhurst - [Seacrest Avenue and Lido Promenade](#) (UL) (Flood prone area) inundated with 13 inches of water on the road, water up to the door of several cars...and some garages inundated. At [East Shore Rd and McKinley](#) (UR)...a car stuck with up to 20 inches of inundation on the street. [Granada Parkway and Harding Ave](#) (LL) (12/9/2014) 11am-3pm. South of Montauk Highway from 3/7/2013 (LR)







Sayville- [Parking lot at Sayville Ferry](#) inundated with 1 to 2 ft of water.



Robert Moses – (6-10 ft easterly swells) Flooded up to the dune in most areas of Robert Moses State Park. Erosion was moderate to heavy 10-50 feet of beach lost.

Babylon - Minor flooding in the streets of the mainland but not over the bulkheads.

[Milton Road](#) flooded with about 1 ft.



1 to 2 ft waves overwashing [Sampawams Point](#) in Babylon



[Fire Island Avenue closed near Pier 44](#) due to coastal flooding

[Gilgo \(Jones Island\)](#) – Flooding was up to the dunes but did not cause the severe erosion of a nor easter.

[Mastic Beach](#) – Minor flooding of bayfront roads in Mastic Beach (3/7/2013)



**At 3.8 ft NGVD / 3.4 ft MLLW / 1.9 ft MHHW**

[Lindenhurst](#) – 3 to 4 inches of inundation across [Venetian Blvd.](#) (5/6/2016)

**At 3.7 ft NGVD / 3.3 ft MLLW / 1.8 ft MHHW**

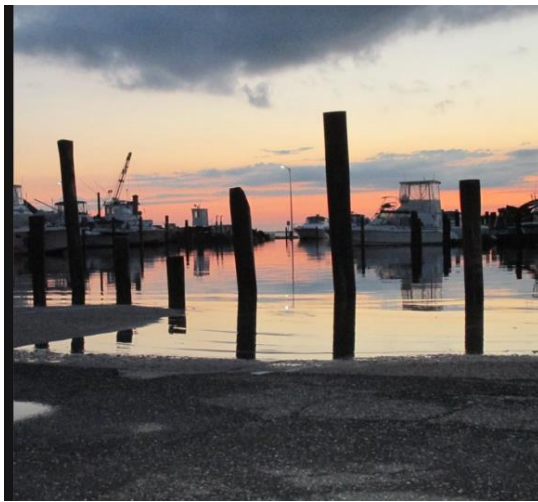
[Lindenhurst](#) – Minor to Moderate coastal flooding reported with several streets flooded.

On [Venetian and Bay](#)- Water seep from the sewers starting near 9pm and by 930 water started appearing from the bay side. They did not meet in the middle of the street. On [Arctic St](#) and [Shore Rd](#), minor street flooding. (9/19/2017-Jose)

Copiague- Minor flooding across yards on [East Drive](#) and [West Drive](#) in Copiague , as well as minor surging from storm drains.



West Sayville – Minor inundation of [West Sayville docks](#) (L)...[and Kingston Clam Bar](#)(R) on Atlantic Avenue.



**At 3.6 ft NGVD / 3.2 ft MLLW / 1.7 ft MHHW**

Copiague - Minor coastal flooding on [West Drive](#), and just very minor street flooding from storm drains on [East Drive](#). (3/14/2017)



Babylon - Water over all bulkheads on tidal pond, and street inundation to 6 inches in a very limited area [1/2 mile south of Montauk in Babylon Village near Belton Ct.](#)  
Lindenhurst – Flooding at [West Lido Promenade](#)



1-2 ft of inundation on [East Shore Rd](#) (3/14/2017) (credit NBC4 news)





Heckscher State Park- No damage on beachfront at this time. Major flooding throughout the park from heavy rain and stormtide.

at 3.5 ft NGVD / 3.1 ft MLLW / 1.6 ft MHHW

Copiague -Started to see minor coastal flooding on the south ends of East & West around 10pm. This was approximately 57 mins before normal high tide, and a cause for concern. It stayed over flooding thresholds for just over an hour after normal high tide. This was in the form of minor tidal lap-over onto backyards on [East Drive](#), and partial submersion of backyards on [West Drive](#), as well as the usual saltwater pushing up through storm drains causing minor flooding on the streets. (6/4/2012 10-1130 pm)

Babylon – Minor flooding in lowest lying areas. (4/29/2014)

Lindenhurst – High water covering lower part of two abandoned homes in [Venetian Shores](#).



The following locations are not passable:

[Verona and Lake Drive road](#) are not passable...with water up the driveways but not in homes.

[South Wellwood](#) – Waves from bay pretty high over dock

The following roads are almost impassable...with partial flooding of driveways:

[Elm and West Lake](#)

[Surf St.](#)

[South Bay St and Arctic St.](#)

[Riviera](#)

[Surf St and Beach St.](#)

[Verona and Oak](#) , partial

[Ventian Parkway](#); water coming in the channel starting over the dock and grass



(2/27/2013)

[Gilgo Beach](#) - **48 hrs 20-25ktG30kt...7-9 ft easterly (90-100 deg) waves** - Moderate erosion on [Gilgo Beach](#) a lot of sand moved west some of the beach that we did not put sand on are back to a flat beach. Areas west of the old coast guard station suffered major erosion.

[Robert Moses](#) - **48 hrs 20-25ktG30kt...7-9 ft easterly (90-100 deg) waves**. Beach flooding at each high tide through Thursday morning.

[Jones Beach](#) - **48 hrs 20-25ktG30kt...7-9 ft easterly (90-100 deg) waves** Overwash on the beach occurred with standing water on the center areas of the West Bathhouse, Field 2, Field 1 and West End 2.

**at 3.4 ft NGVD / 3.0 ft MLLW / 1.5 ft MHHW**

[Copaigue](#) - Up to 1.5 feet of water covered [East Shore Road](#) and [East Riviera Drive](#) from the Great South Bay to Near [East Neptune Avenue](#) (about 2 and one half blocks from the Bay).  
(7/23/2009)

[Lindenhurst](#)- Water to come from the sewers at the [corner of Venetian blvd and Bay Place](#) and it receded 2 hrs later (10/28/2015)

**At 3.2 ft NGVD / 2.8 ft MLLW / 1.3 ft MHHW...with 2-3 ft waves on southerly 30g40kt**

[Lindenhurst](#) - Waves overtopping bulkheads along bayfront.