

[Belt Parkway](#) – Several feet of inundation on Belt Parkway Eastbound by the Verrazanno



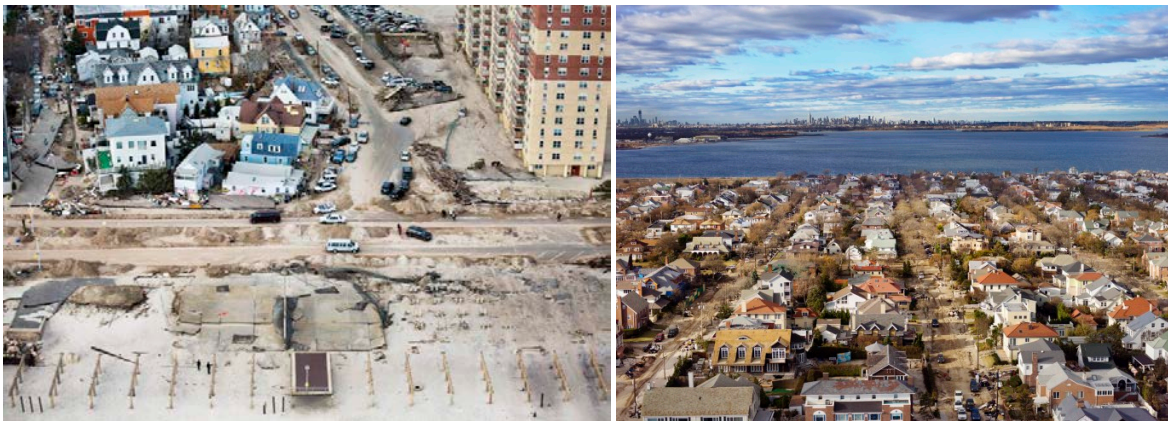
[Gerritsen, Brooklyn](#) – several ft of inundation at [Brigham St and Emmons Ave.](#) and at [Knapp St and Belt Parkway](#)



[Coney Island, Brooklyn](#) – Several ft of inundation from storm tide and wave action



[Breezy Point, Queens](#) –



at **10.7 ft MLLW / 8.9 ft NGVD / 5.1 ft MHHW** (Dec 1992 Nor'Easter)

[Belt Parkway](#) – Sections closed along the length of the parkway due to flooding. Even near the Verrazano Bridge

[Coney Island](#) – About 100 ft of [Steeplechase Pier](#) washed away.

[Ocean Parkway and Neptune Avenue](#) closed due to flooding.

[Sea Gate](#) – Almost every home in the neighborhood suffered flood damage. Several were completely destroyed.



[Breezy Point](#) – Extensive flood damage across neighborhood. Several homes completely destroyed.

at 9.4 ft MLLW / 7.6 ft NGVD / 3.8 ft MHHW

[Coney Island, Brooklyn](#) – [Several harbor facing streets underwater](#). [Subway train storage yard underwater](#) (800-830am 8/28/2011)

[Sheepshead Bay, Brooklyn](#) – [Belt Parkway eastbound at Knapp Street](#) closed due to flooding. (Freshwater/Coastal) (844am 8/28/2011)

[Rockaways, Queens](#)- Inundation onto several main streets. Two feet of water in the middle of [Rockaway Beach Boulevard](#). (830 am 8/28/2011)

The [Belt Parkway was closed in both directions from Bay 8th Street to Bay Parkway](#) due to coastal flooding. (830 am 8/28/2011)

at 8.5 ft MLLW / 6.7 ft NGVD / 2.9 ft MHHW

On the evening of March 13th. The [Belt Parkway was closed in both directions from Bay 8th Street to Bay Parkway](#) due to coastal flooding. Storm surges left thick ocean debris along [Shore Blvd. near Exeter Street](#) as well as Holocaust Memorial Park

[Manhattan Beach](#) – Minor Flooding on [Shore Blvd and Amherst St.](#) (2/8/2016)

[Seagate](#)- Minor flooding on [Mermaid Avenue and West 25th St](#) (2/8/2016)

[Breezy Point](#)- Overwashes into onto [Bayside Avenue](#) and adjacent properties in Roxbury Sections of Breezy Point (2/8/2016)

