



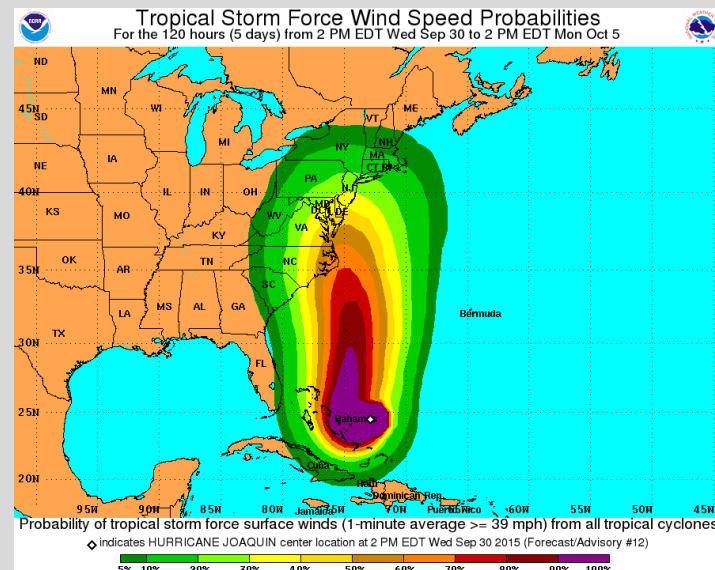
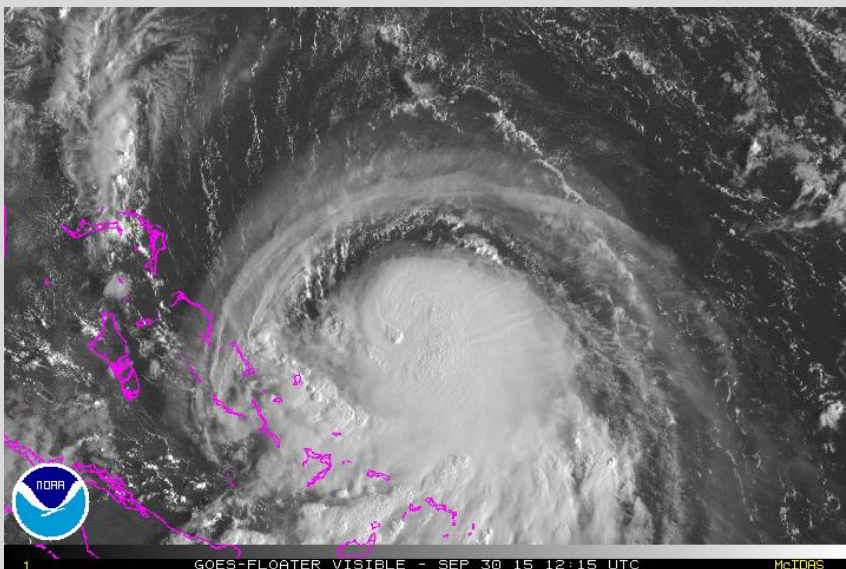
National Weather Service Operations Center



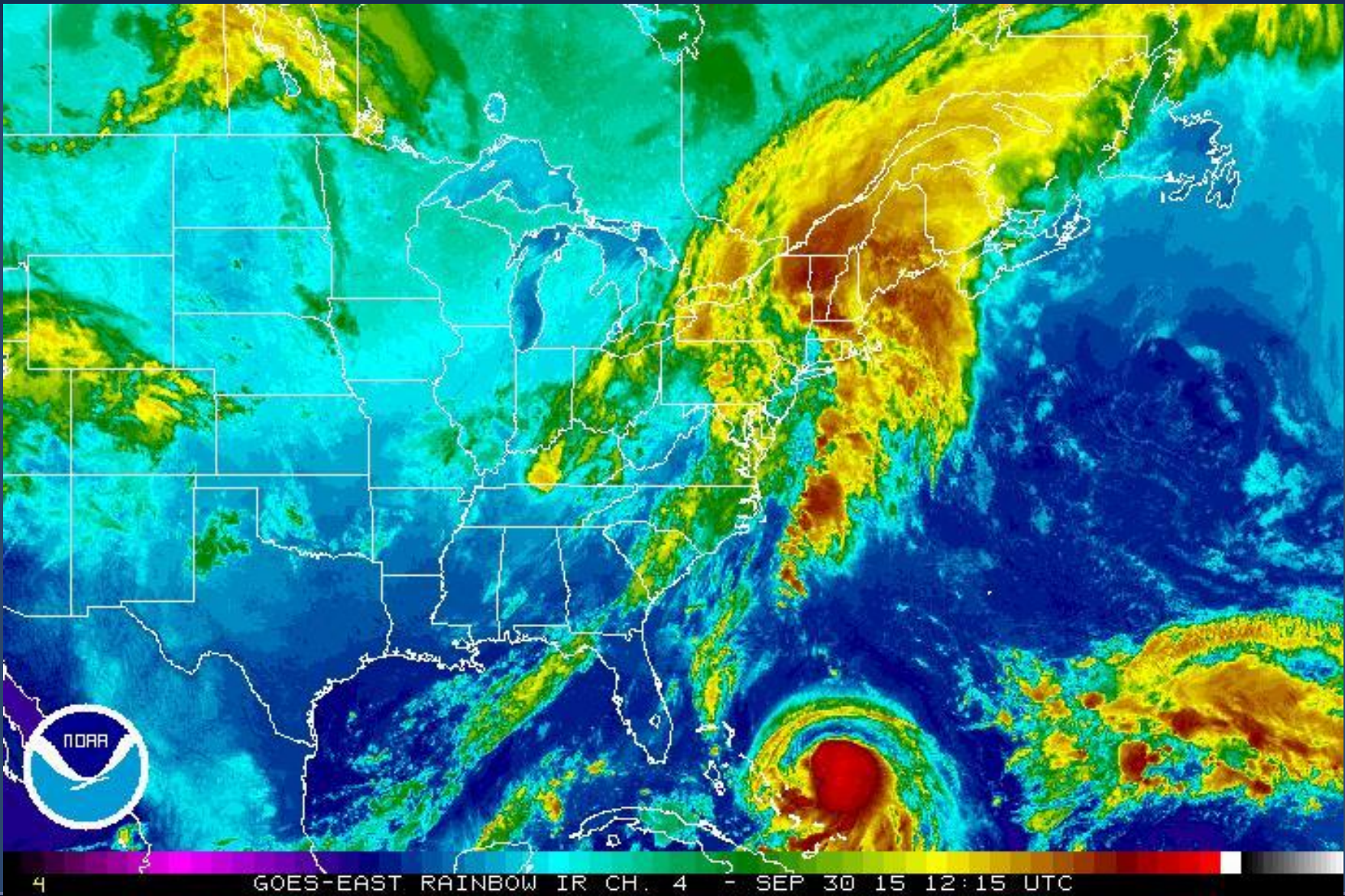
Hurricane Joaquin Briefing

Wednesday, September 30, 2015

9:00 am EDT



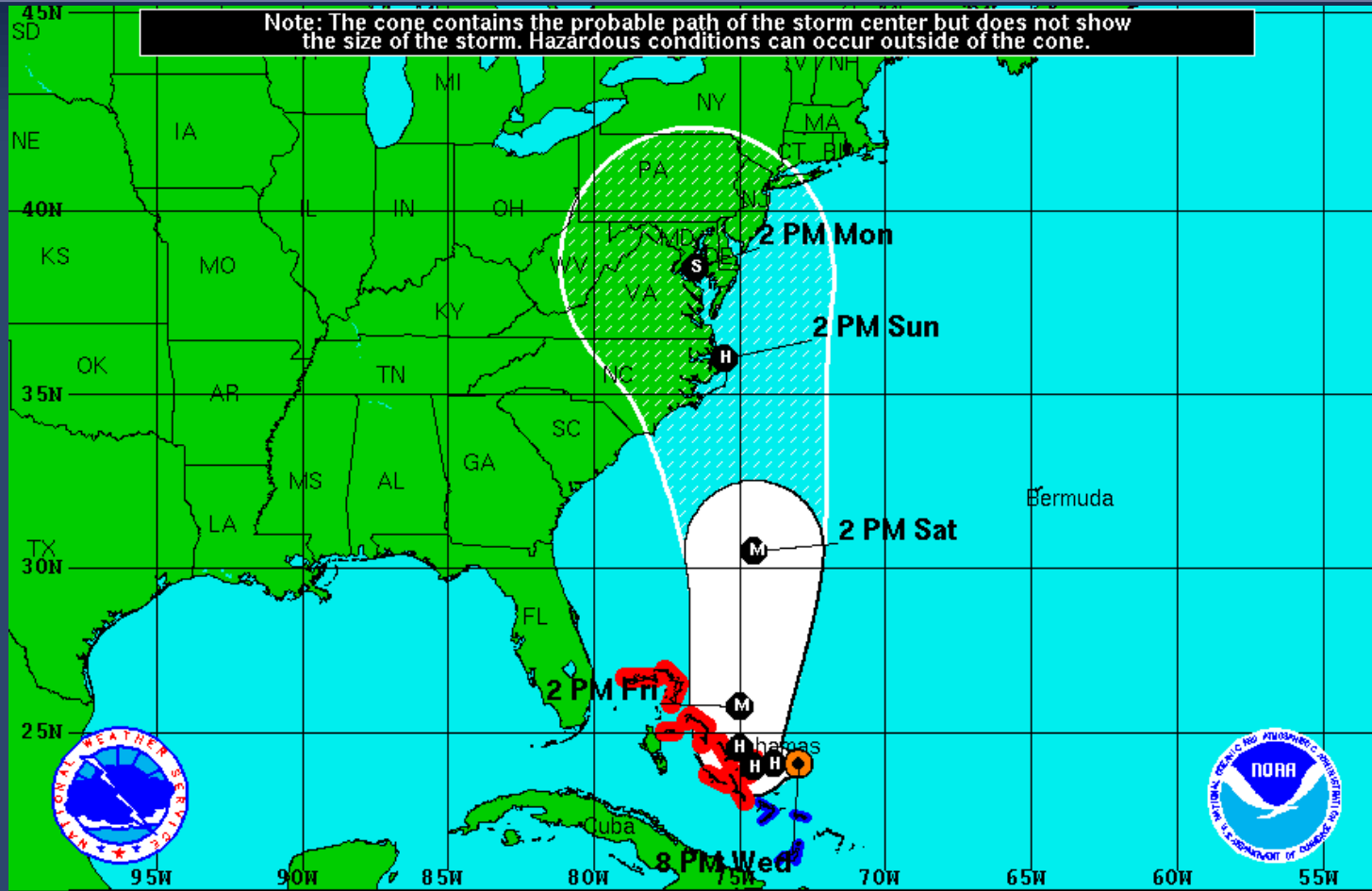
Hurricane Joaquin



NWS Operations Center: Incident Briefing



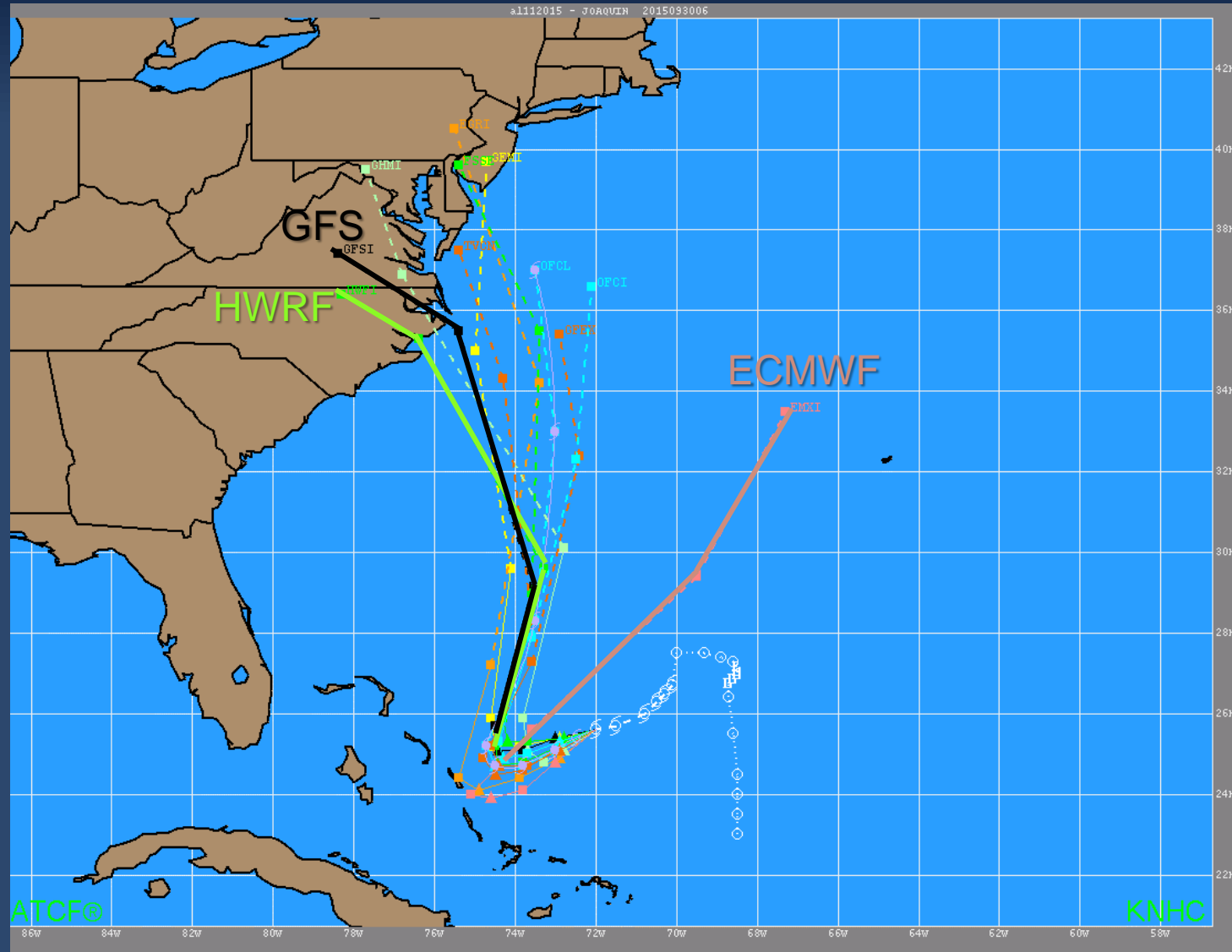
Hurricane Joaquin Official Forecast Track



<p>Hurricane Joaquin Wednesday September 30, 2015 8 PM EDT Intermediate Advisory 12A NWS National Hurricane Center</p>	<p>Current Information: ● Center Location 24.0 N 73.0 W Max Sustained Wind 105 mph Movement SW at 7 mph</p>	<p>Forecast Positions: ● Tropical Cyclone ○ Post-Tropical Sustained Winds: D < 39 mph S 39-73 mph H 74-110 mph M > 110mph</p>
<p>Potential Track Area: ▽ Day 1-3 ▽ Day 4-5</p>	<p>Watches: ■ Hurricane ■ Trop. Storm</p>	<p>Warnings: ■ Hurricane ■ Trop. Storm</p>

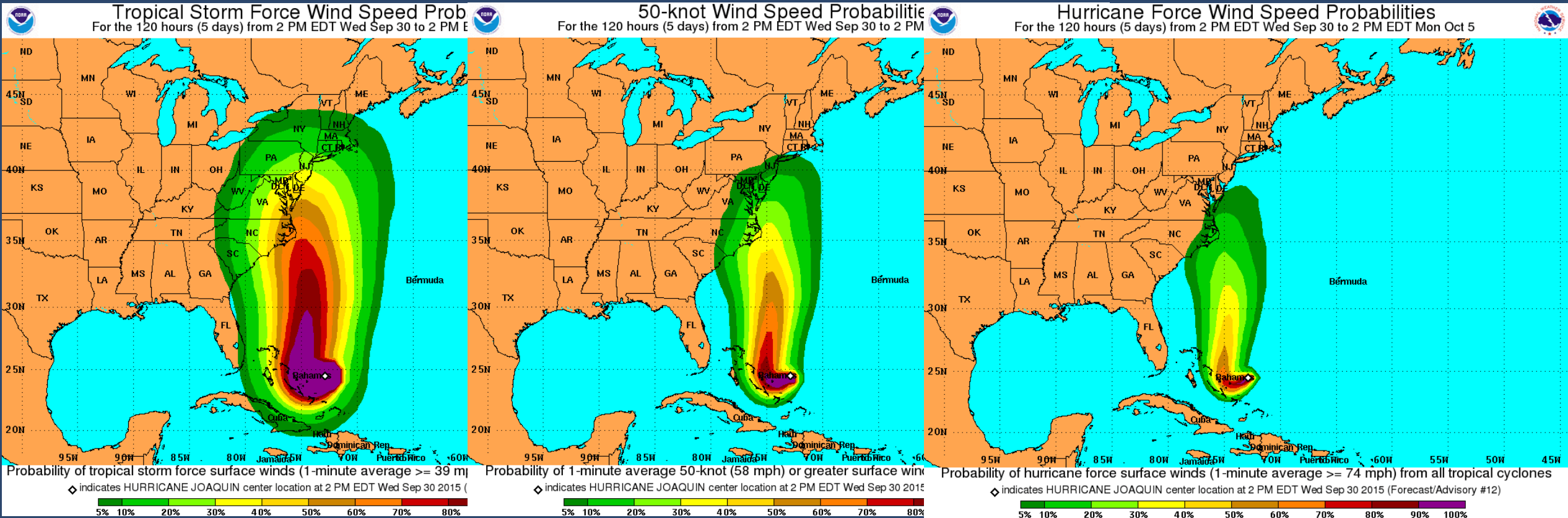


Models from 2 am EDT September 30



Joaquin Wind Probabilities

From National Hurricane Center



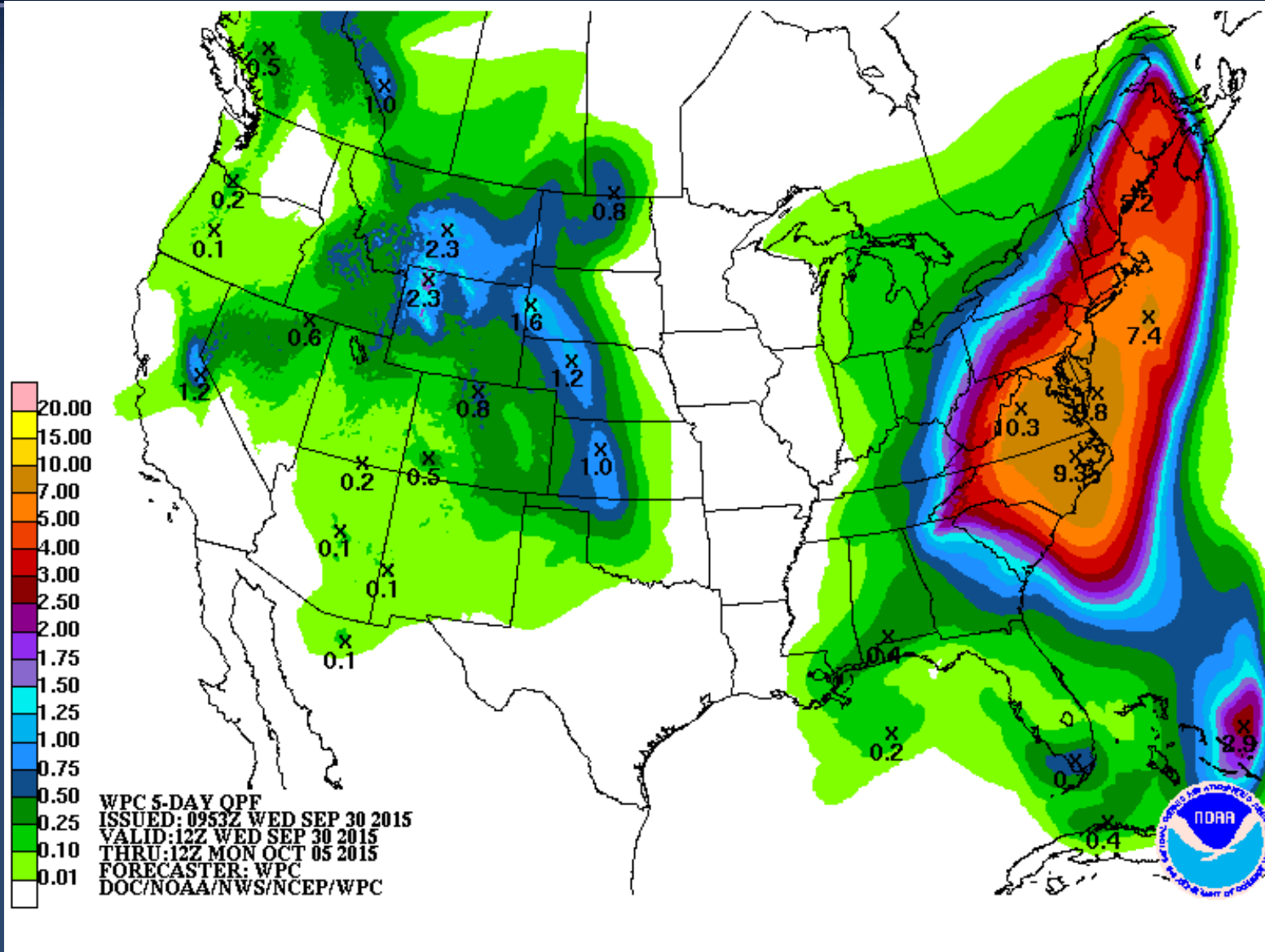
39+ mph

58+ mph

74+ mph



Rainfall Accumulation Forecast



Special Observations

Six-hourly upper air soundings within red circled area

NOAA Gulfstream-IV to provide storm environment information to improve NWP models



NWS Activities - Joaquin

Decision Support Services

- NWS Eastern Region Operations Center is briefing FEMA Region II, Region III, and United Nations Emergency Management Staff.
- NWS Southern Region Operations Center is briefing FEMA Region IV.
- NHC Director has briefed New York City Office of Emergency Management.
- NOAA Liaison to FEMA and NHC Subject Matter Experts are briefing FEMA leadership.
- NWS National Aviation Meteorologists are briefing FAA Command Center personnel.
- Local NWS Weather Forecast Offices are regularly briefing local emergency managers.



NWS Communications - Joaquin

Key Messages

- Still some uncertainty in the eventual track of Hurricane Joaquin and the associated impacts to the eastern U.S.
- Excessive rainfall is a major concern regardless of the eventual track.
- Rip currents and high surf are also a significant hazard all along the eastern seaboard.
- People from the Carolinas to Maine, from the coast west to the Appalachian mountains, should closely monitor the progress of Joaquin.

