



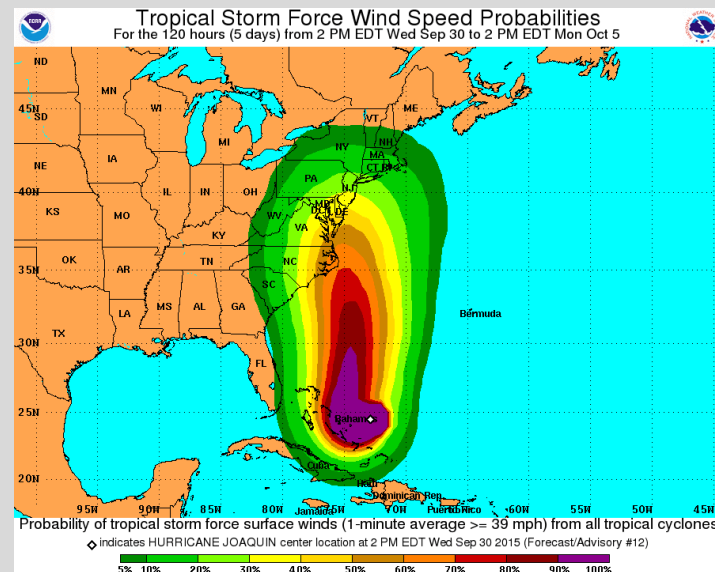
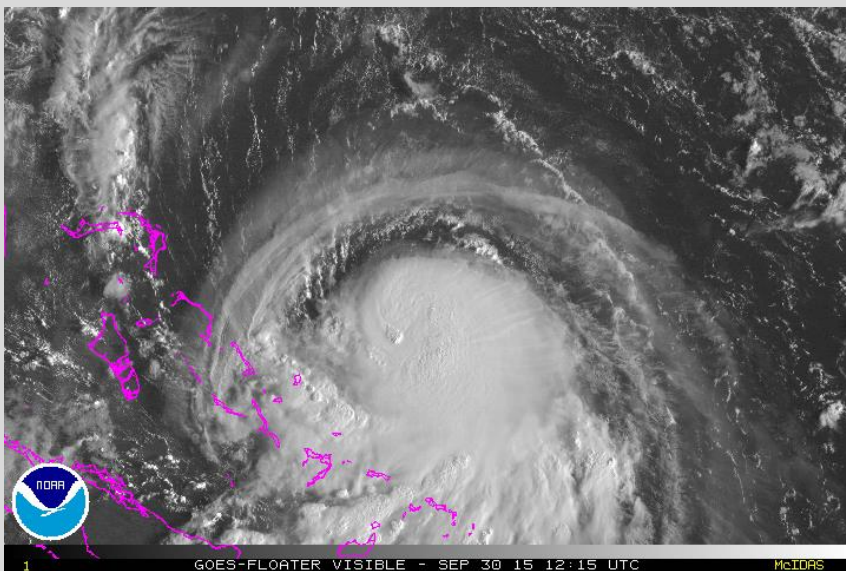
National Weather Service Operations Center



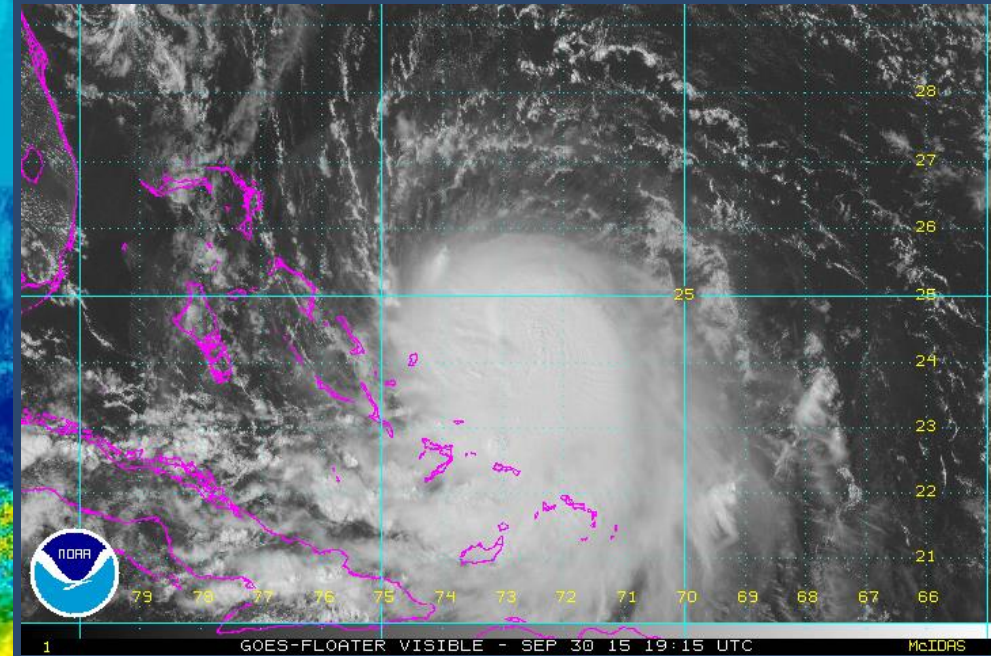
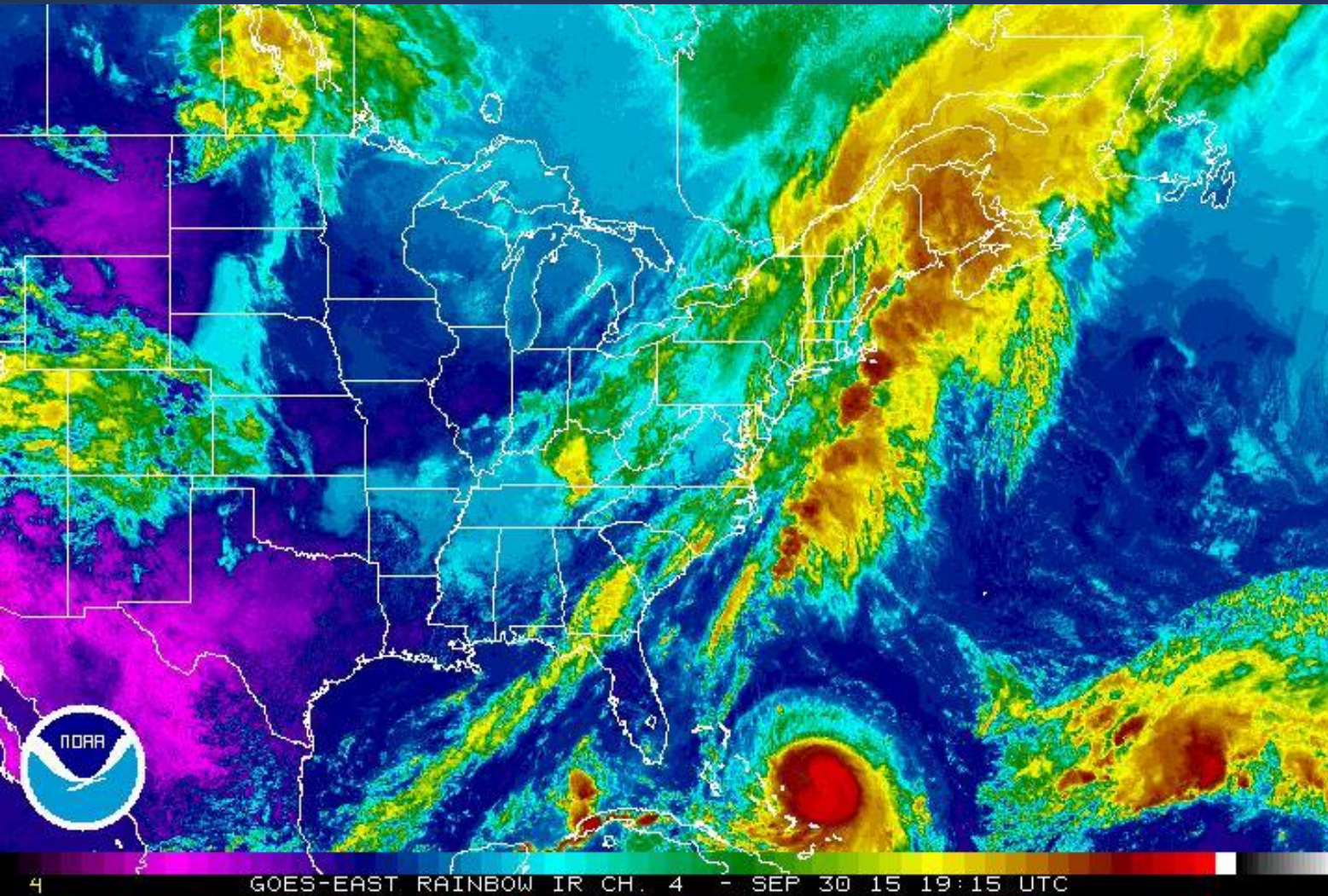
Hurricane Joaquin Briefing

Wednesday, September 30, 2015

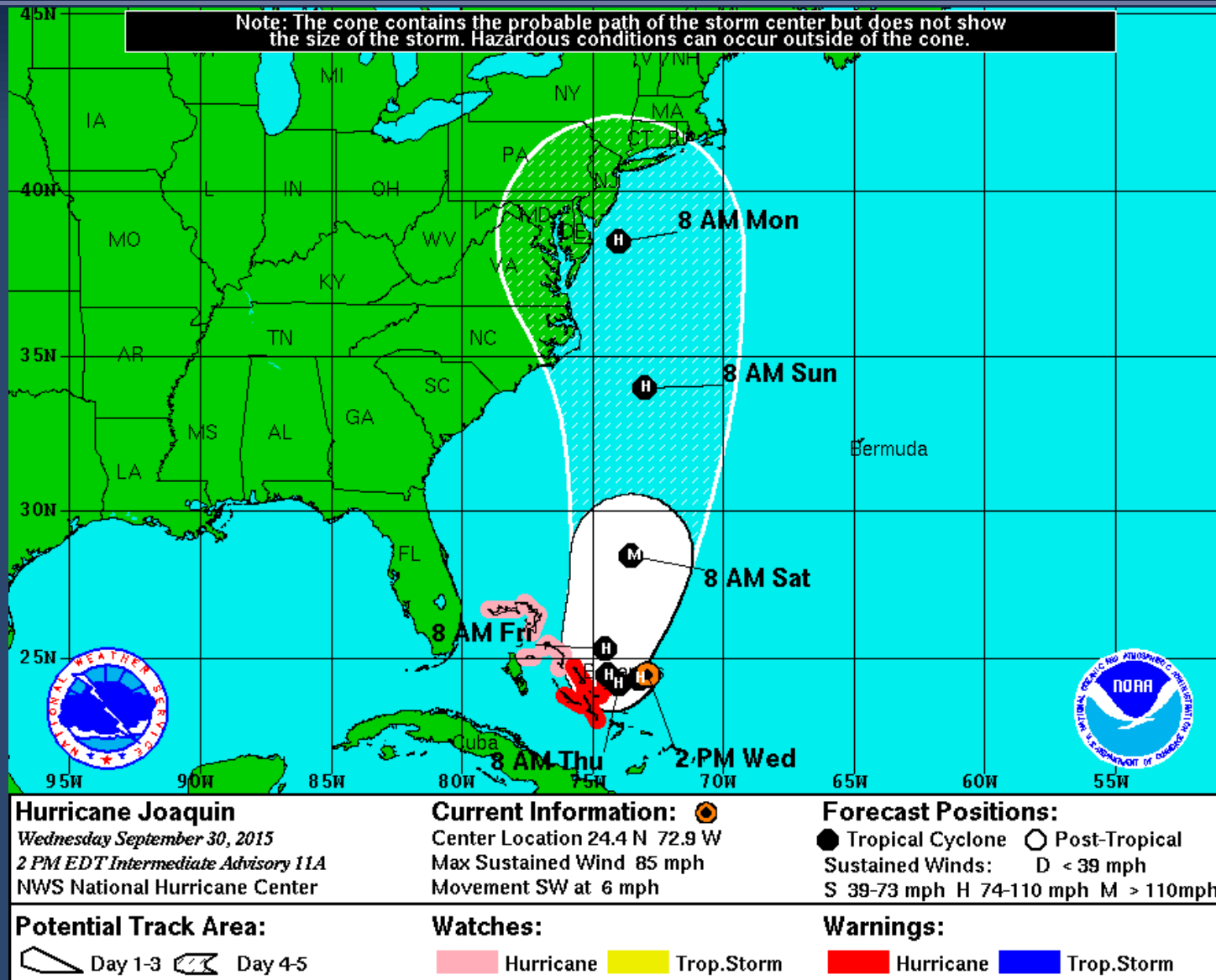
4:00 pm EDT



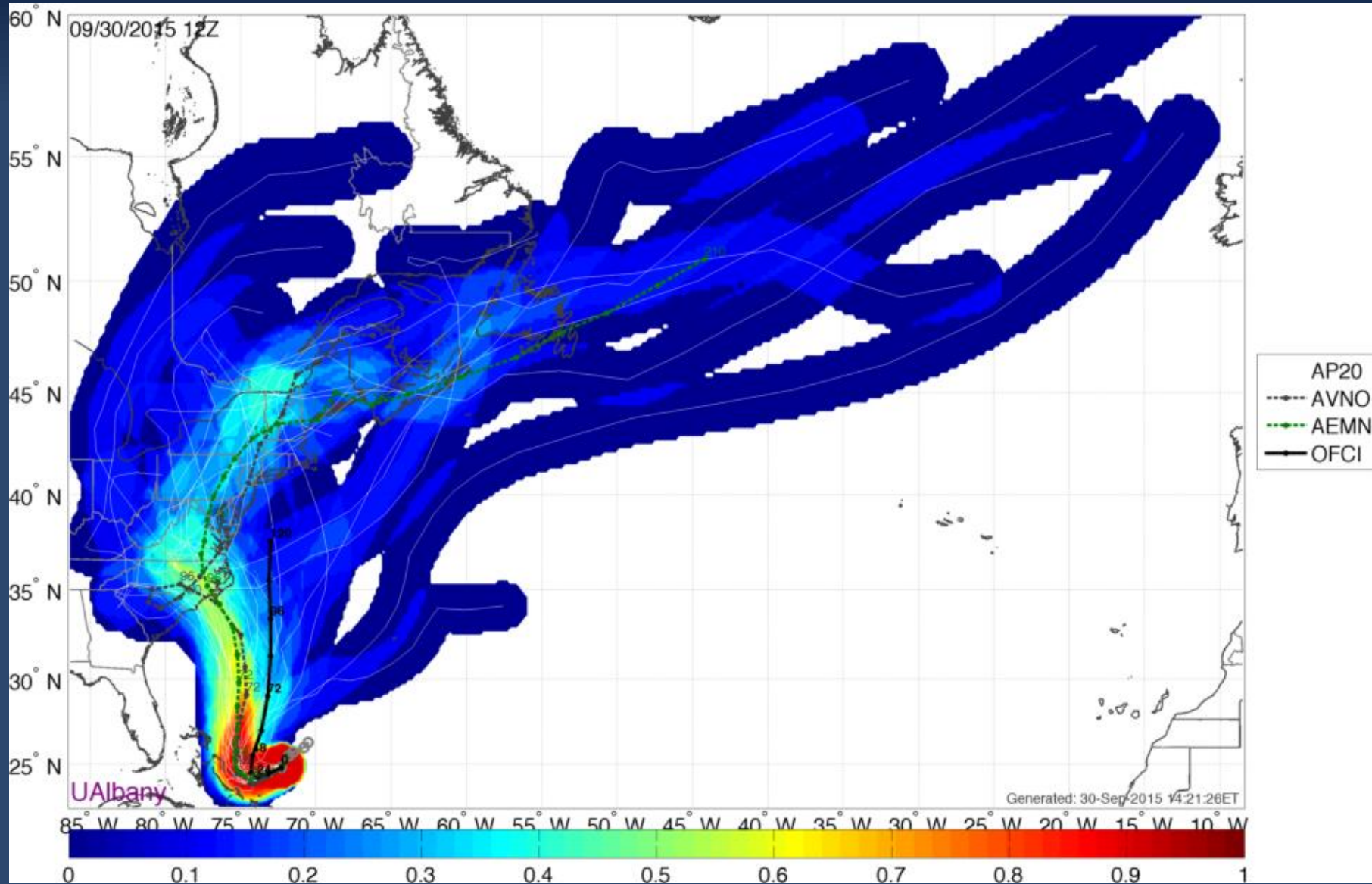
Hurricane Joaquin



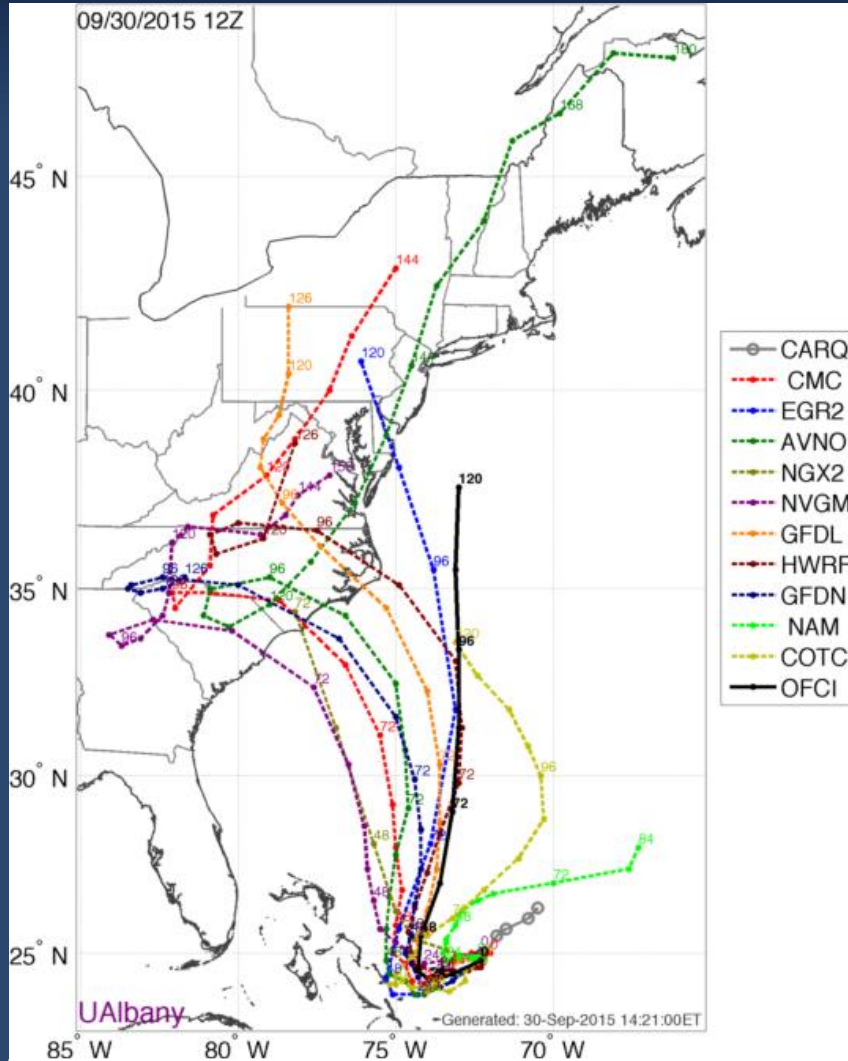
Hurricane Joaquin Official Forecast Track



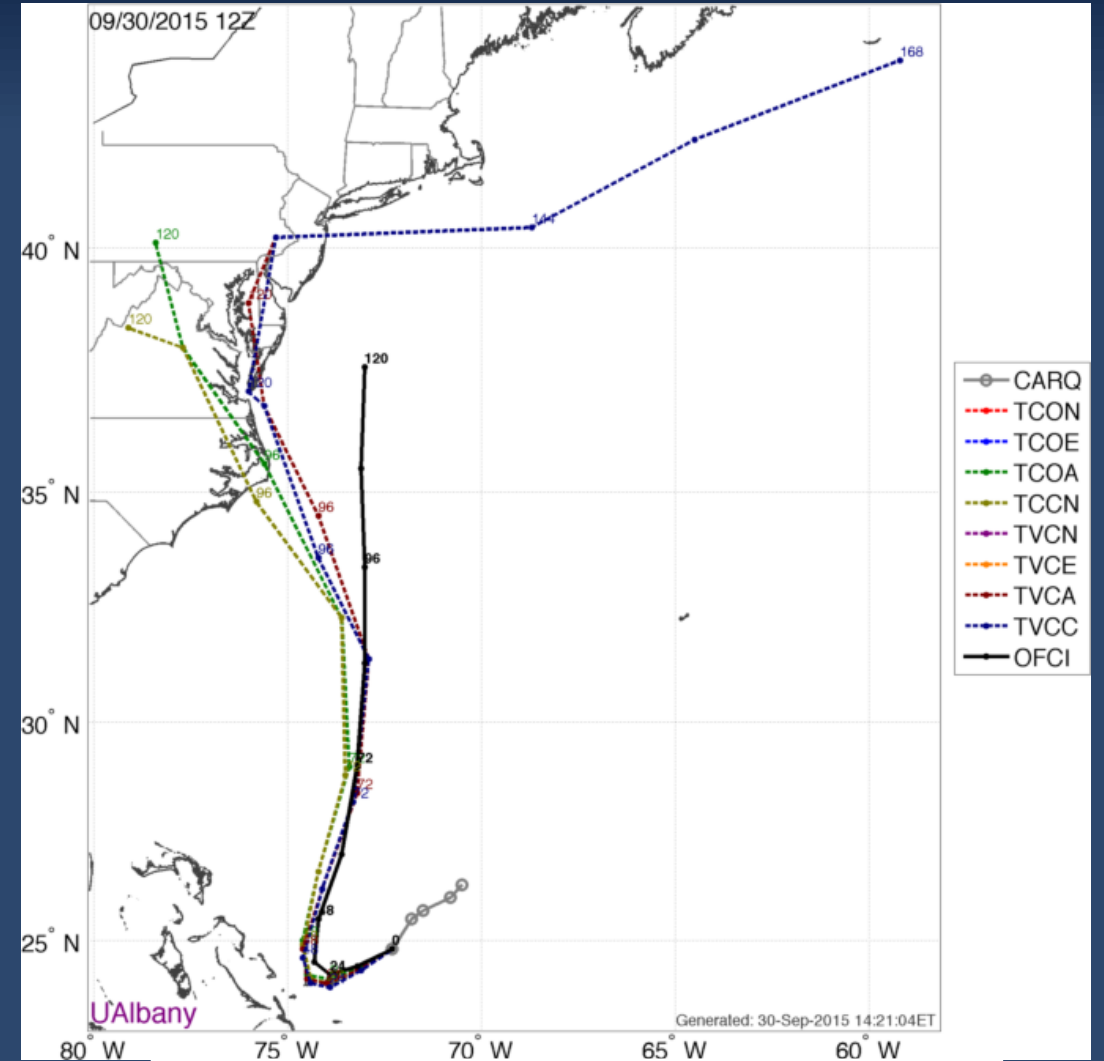
12Z GFS Ensembles



12Z Models



Global/Dynamic

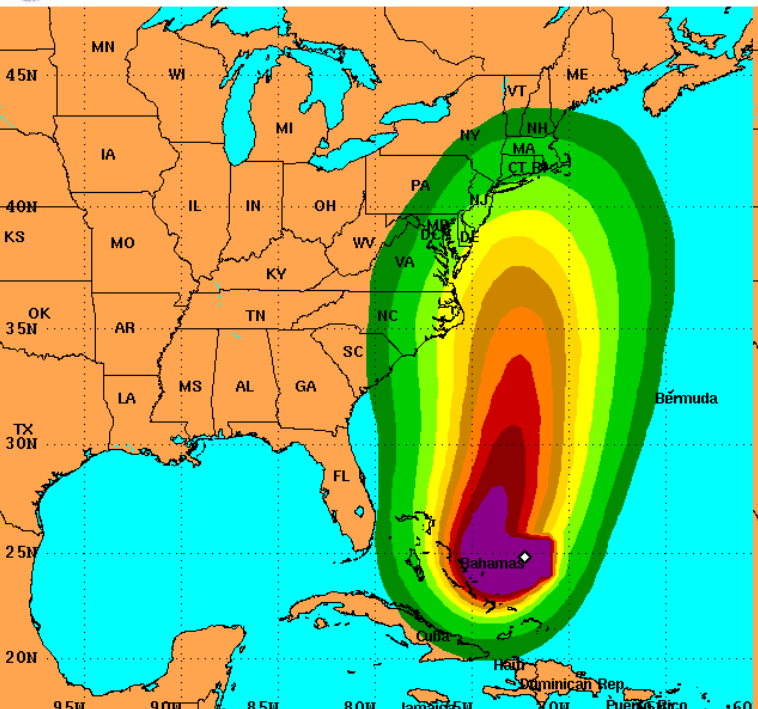


Consensus

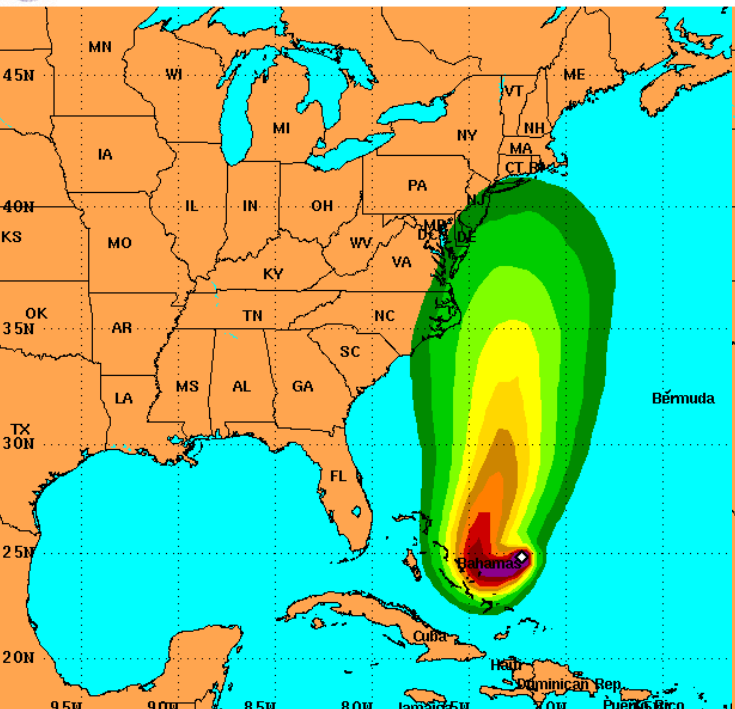
Joaquin Wind Probabilities

From National Hurricane Center

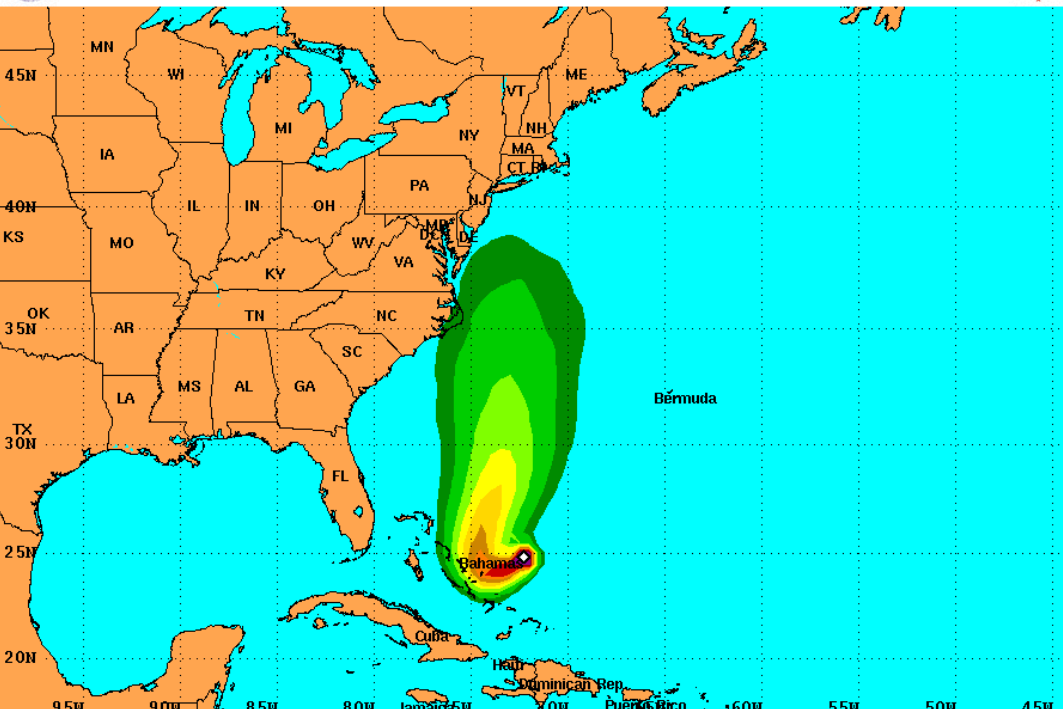
Tropical Storm Force Wind Speed Prob
For the 120 hours (5 days) from 8 AM EDT Wed Sep 30 to 8 AM



50-knot Wind Speed Probabili
For the 120 hours (5 days) from 8 AM EDT Wed Sep 30 to 8 AM



Hurricane Force Wind Speed Probabilities
For the 120 hours (5 days) from 8 AM EDT Wed Sep 30 to 8 AM EDT Mon Oct 5



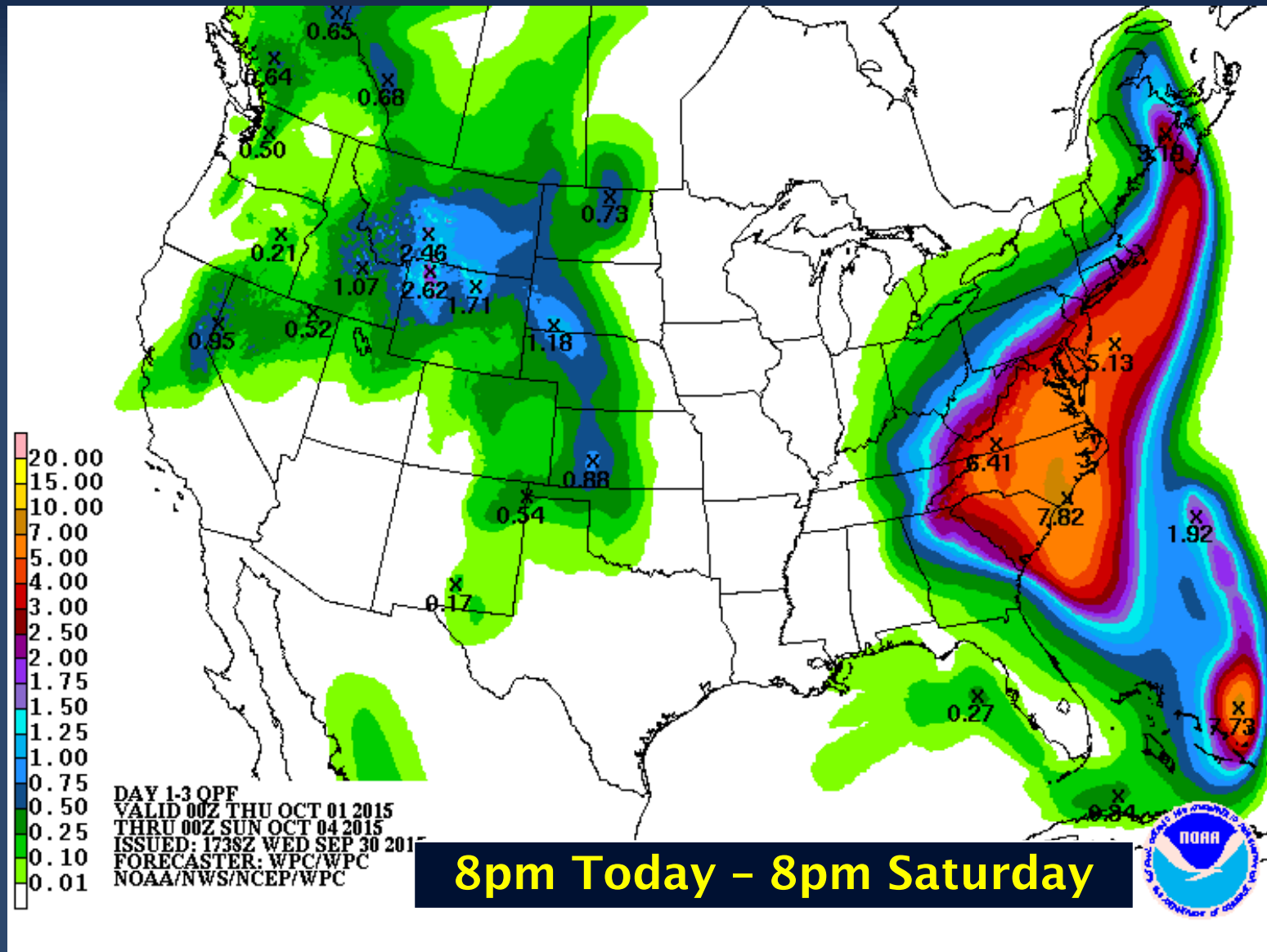
34+ kts

50+ kts

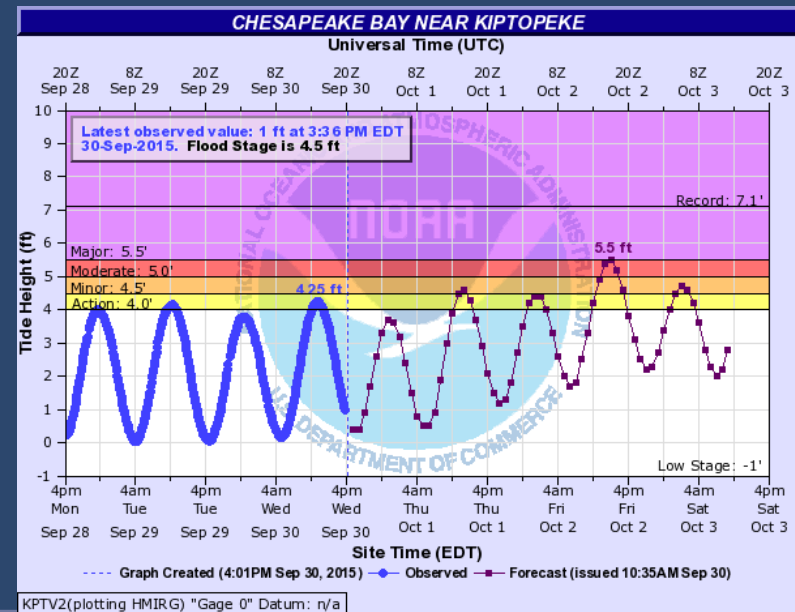
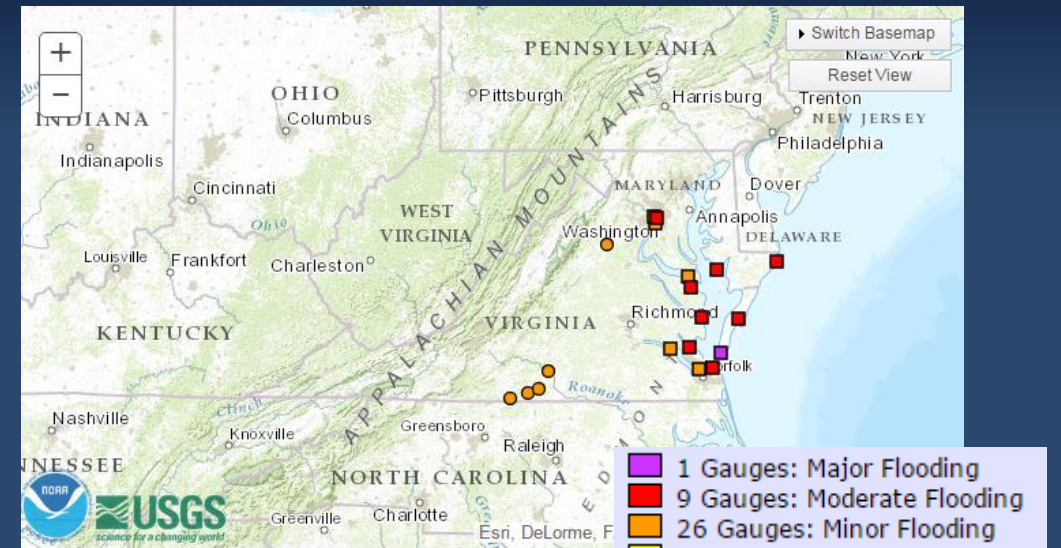
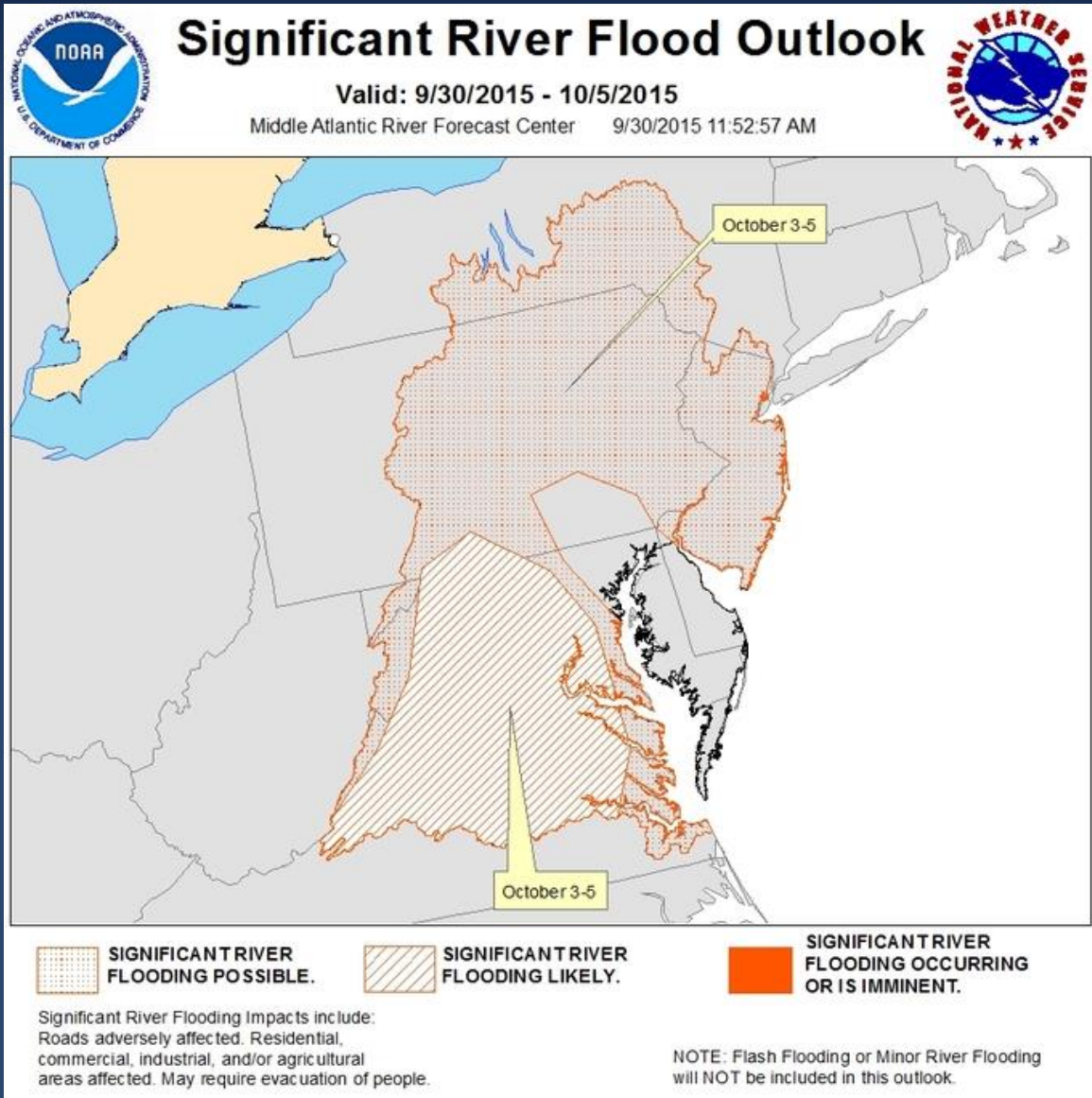
64+ kts



Rainfall Accumulation Forecast

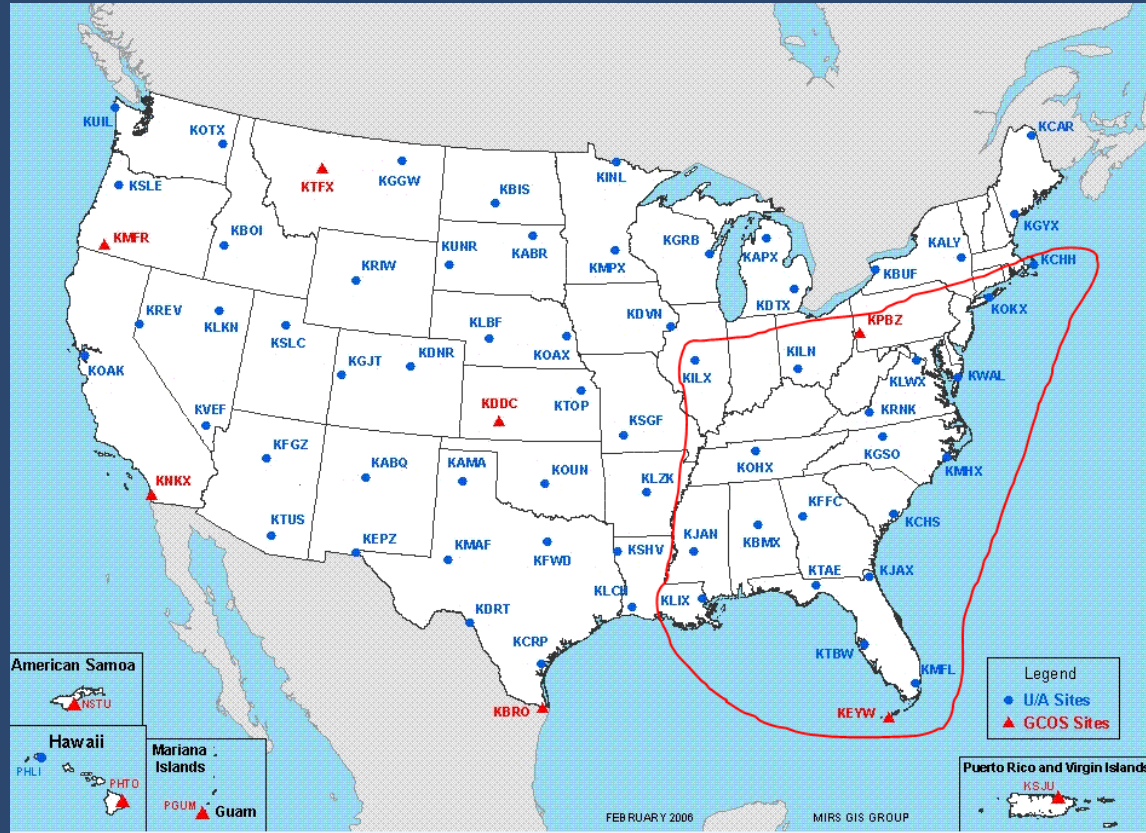


River and Coastal Flooding Risk

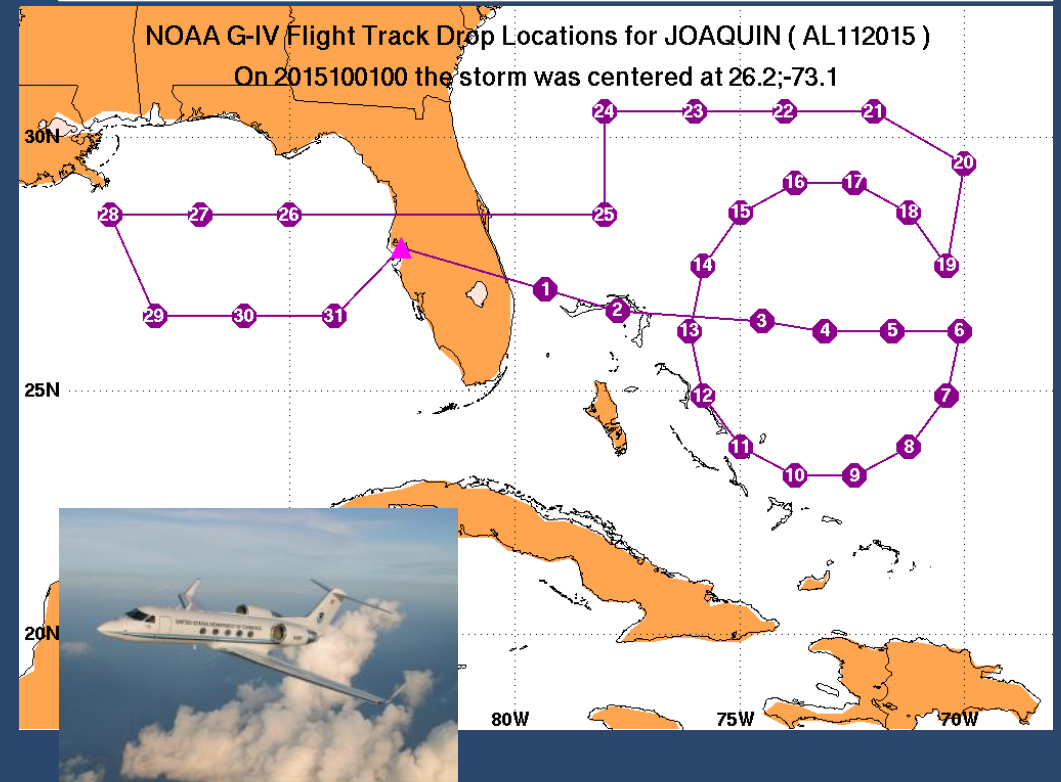


Special Observations

Six-hourly upper air soundings within red circled area



NOAA Gulfstream-IV to provide storm environment information to improve NWP models



NWS Activities - Joaquin

Decision Support Services

- NWS Eastern Region Operations Center is briefing FEMA Region II, Region III, and United Nations Emergency Management Staff.
- NWS Southern Region Operations Center is briefing FEMA Region IV.
- NHC Director has briefed New York City Office of Emergency Management.
- NOAA Liaison to FEMA and NHC Subject Matter Experts are briefing FEMA leadership.
- NWS National Aviation Meteorologists are briefing FAA Command Center personnel.
- Local NWS Weather Forecast Offices are regularly briefing local emergency managers.



NWS Communications - Joaquin

Key Messages

- Still uncertainty in the eventual track of Hurricane Joaquin
- Too early to forecast impacts at any given point in eastern U.S.
- If landfall scenario unfolds, might be faster than forecast graphic indicates
 - Hurricane Watch may be needed as late tomorrow.
- Excessive rainfall is a major concern regardless of the eventual track.
- Rip currents and high surf are also a significant hazard all along the eastern seaboard.

