

Basic Weather Spotting for the Inland Northwest



Spring 2025
National Weather Service
Spokane



Tree Damage in Oroville, WA - Sept 25, 2024



NATIONAL WEATHER SERVICE
WEATHER FORECAST OFFICE • SPOKANE, WA

This is a Live Virtual Class

- Voice in Computer - no phone needed - headphones helpful
- All are in listen mode until the end

New to GoToWebinar? Here's the basics

the Menu bar

- Audio – tests your volume
- Attendees – all in attendance
- Poll – answer poll questions
- **Questions** – type in a question for the speaker to answer
- **Handouts** – download & print
- Chat – speaker's comments
- Click on the **Hand** to raise
- Click orange arrow to collapse window



Objectives

- Understand the roles & importance of the Weather Spotter
- Provide accurate and timely reports of severe weather
- Describe your community's severe weather threats
- Properly define a severe thunderstorm and basic thunderstorm structure
- Learn how to prepare and be safe during severe weather

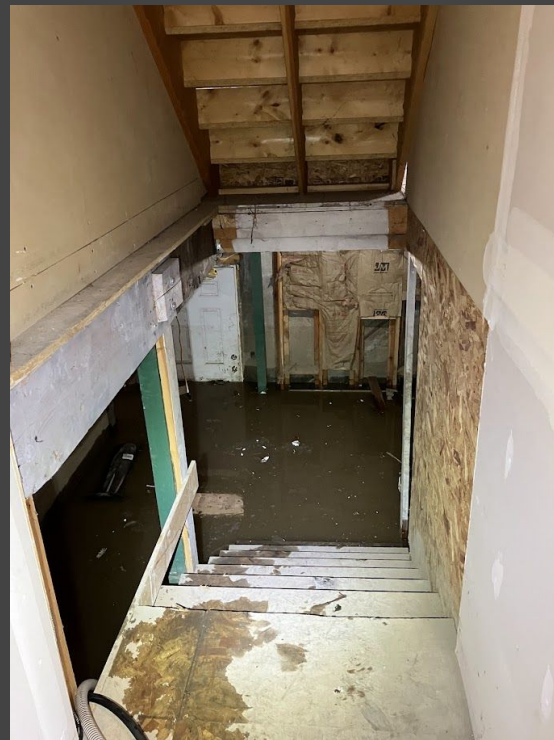
Concentration on Basic weather spotting and the Checklist

Now let's look back to the last couple of years.....



Flooding - Feb 23-24, 2025

Palouse, WA



NATIONAL WEATHER SERVICE
WEATHER FORECAST OFFICE • SPOKANE, WA

Dust Storms - September 25, 2024



Pullman, WA



NATIONAL WEATHER SERVICE
WEATHER FORECAST OFFICE • SPOKANE, WA

Wind Damage - September 25, 2024

Oroville, WA



NATIONAL WEATHER SERVICE
WEATHER FORECAST OFFICE • SPOKANE, WA

To Our Current Weather Spotters....

THANK YOU!



Eyes and Ears of the
National Weather Service
with a count of over 1200
across the Inland NW!



NATIONAL WEATHER SERVICE
WEATHER FORECAST OFFICE • SPOKANE, WA

New to the program?

What is a Weather Spotter?

- Weather enthusiast who volunteers time to report severe or hazardous weather
 - As needed basis
 - No weather equipment necessary
 - Simply call, email or send a report online
 - Become the eyes and ears of the National Weather Service



National Weather Service (NWS)

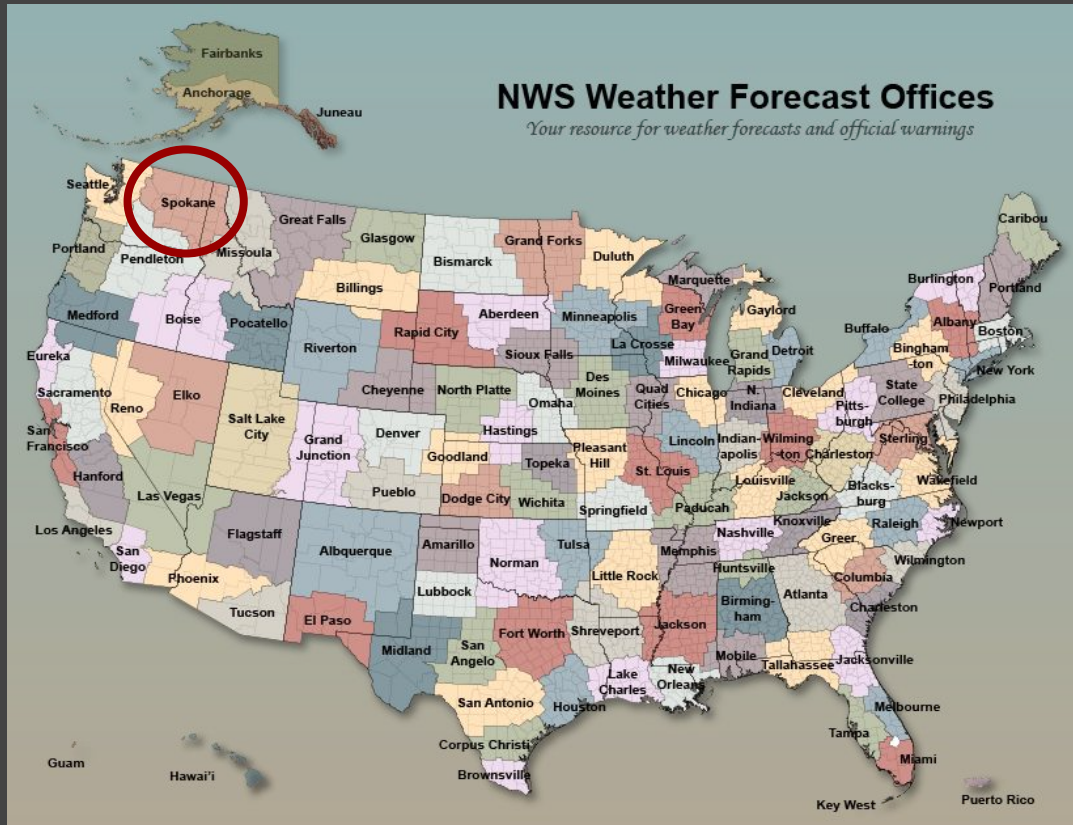
MISSION

- Agency of the Federal Government
 - Dept of Commerce
 - NOAA
- One of 122 offices nationwide
- Forecasts, watches, warnings, and advisories 24/7/365 operations
- ~ 25 staff members
- 2-3 people per shift

Provide weather, water and climate data, forecasts, warnings, and impact-based decision support services for the **protection of life and property and enhancement of the national economy.**



NWS Spokane Forecast & Warning Area

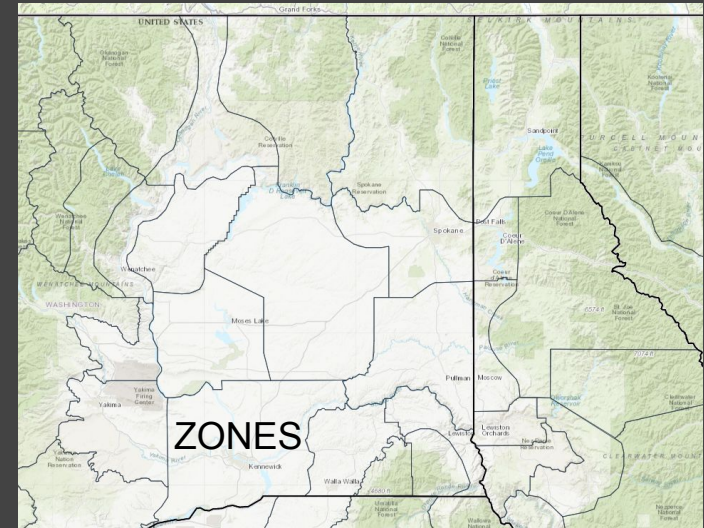


Includes 2 states

- 13 counties in eastern WA
- 8 counties in north Idaho

Elevations range

- 9500+ ft in the north Cascades
- 170 ft along the mid Columbia River

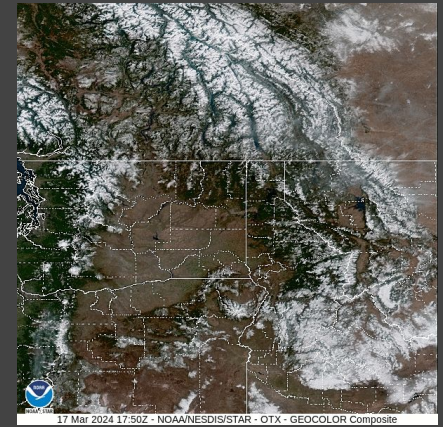
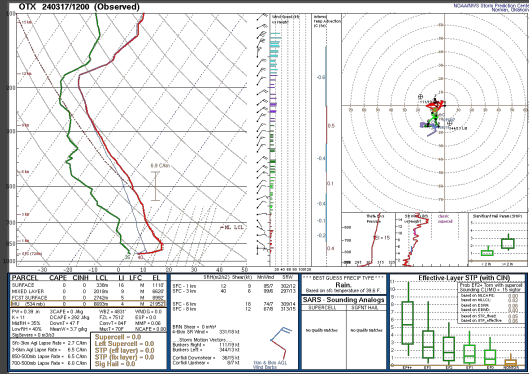
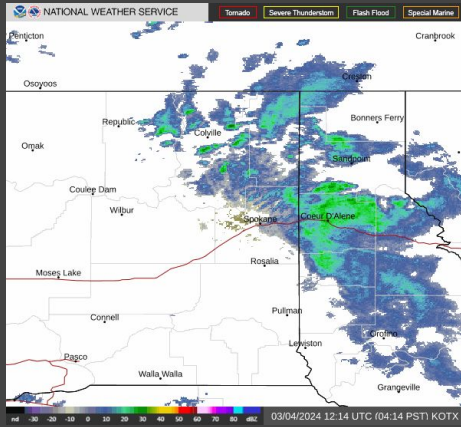


How the NWS “Sees” Weather

Doppler Weather Radar

Radiosonde (Weather Balloon)

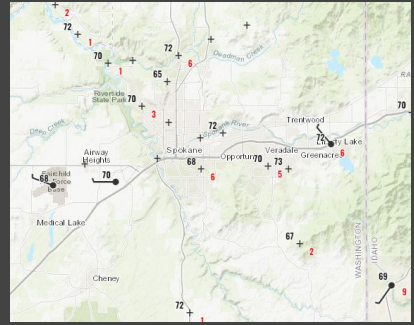
Satellite



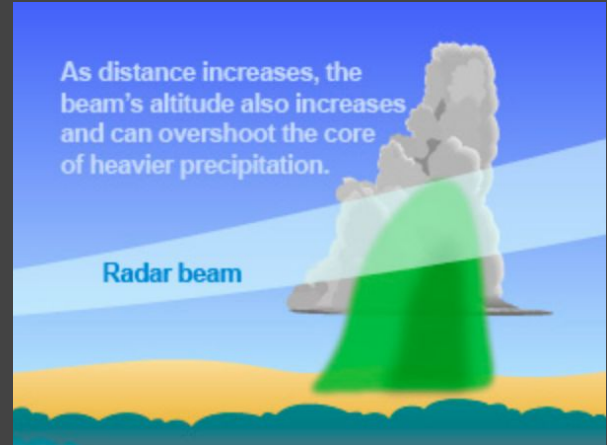
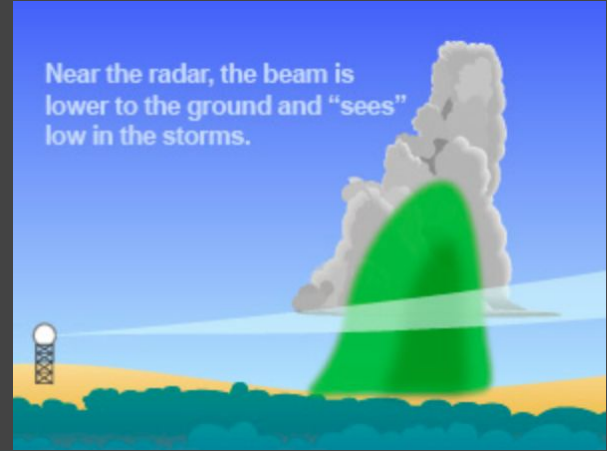
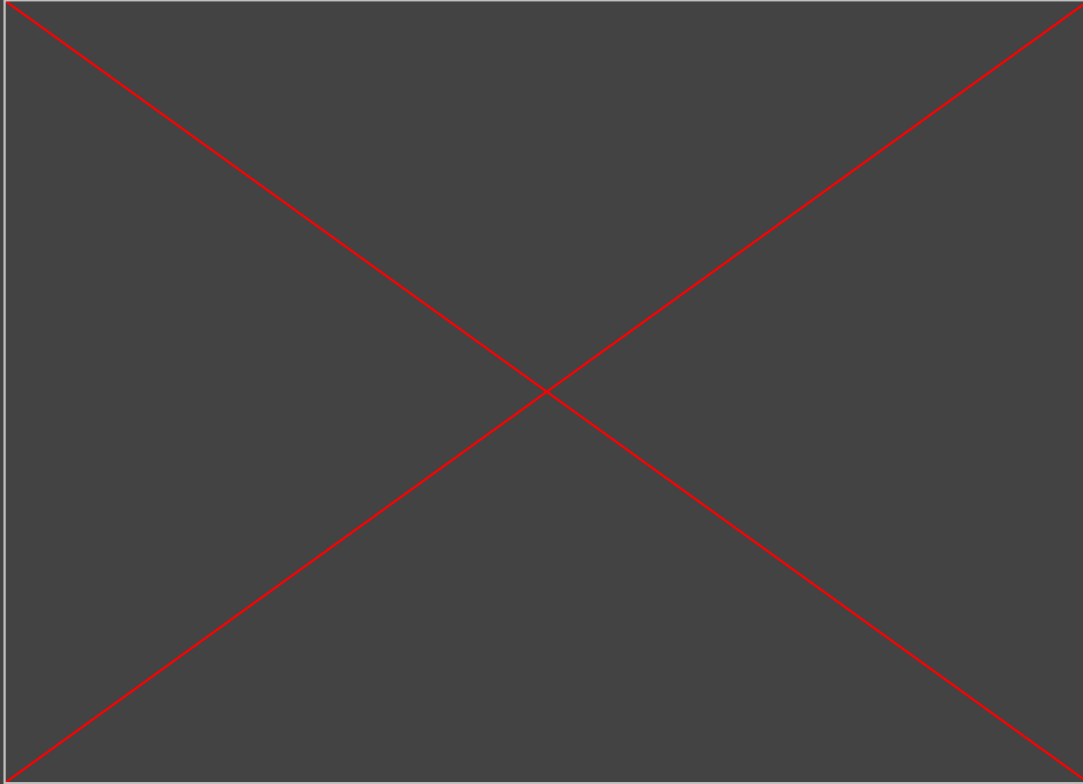
Webcams



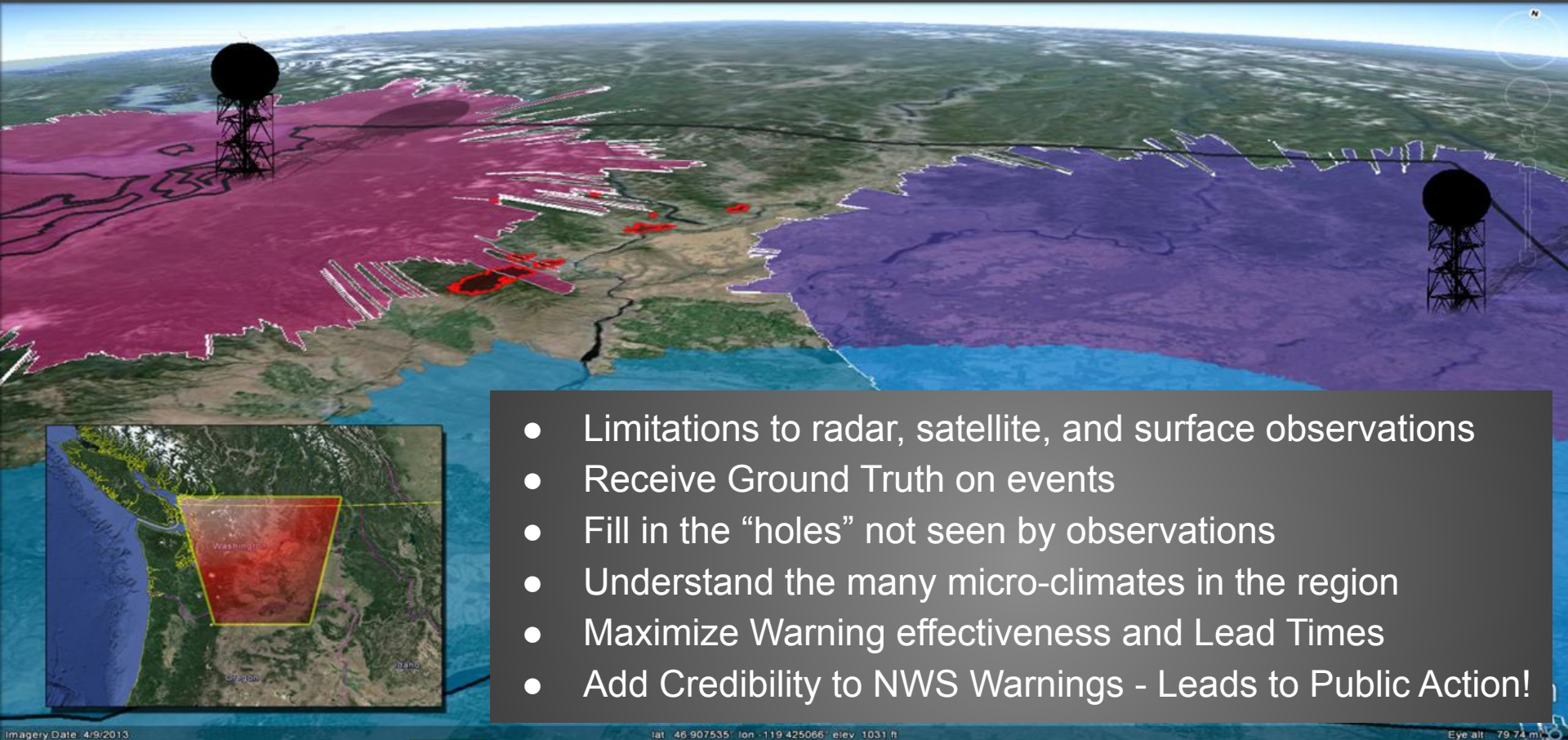
Weather Stations



WHY DO WE TRAIN SPOTTERS?



WHY DO WE TRAIN SPOTTERS?



- Limitations to radar, satellite, and surface observations
- Receive Ground Truth on events
- Fill in the “holes” not seen by observations
- Understand the many micro-climates in the region
- Maximize Warning effectiveness and Lead Times
- Add Credibility to NWS Warnings - Leads to Public Action!

#1 Poll Question

Why are weather spotters important?



What's in a Spotter Report?



The checklist is titled "Inland Northwest Weather Spotter Checklist" and features the NOAA logo on the left and the "SKYWARN" logo on the right. It contains a list of weather events with corresponding colored bars and reporting instructions:

- Tornado or Funnel Cloud:** ANY Kind
- Strong Winds:** +40 mph/Damage (58mph severe)
- Hail:** +3/4" in diameter (1" severe)
- Heavy Rain:** +1/2" in 1 hr or +1" in 12 hrs
- Flooding:** ANY Kind
- Mixed Precipitation:** freezing rain or sleet
- Snow:** +2" below 3K ft (valleys) or +6" abv 3K ft (mntns)
- Poor Visibility:** 1/2 mile or less
- Travel Problems:** due to weather
- Damage, Injury or Loss of life:** ANY
- Excessive Heat:** ANY
- Excessive Cold:** ANY

Specifics...Tell us the Story!

- WHO you are (Spotter ID)
- WHAT you are reporting
- WHEN did the event occur?
- WHERE did the event occur?
- Estimates of wind speeds and hail size
- Damage and injury reports

If unsure - report your uncertainty

Feel free to include reports while traveling and any delayed or second hand reports



HOW TO REPORT: PHONE CALL



Dial :
**1-800-
483-4532**
Spotter ID



What:
Event you
Witnessed



Where:
Location
of event



When:
Time of
the event



HOW TO REPORT: ONLINE

inws.ncep.noaa.gov/report/

www.weather.gov/Spokane



Storm Reports

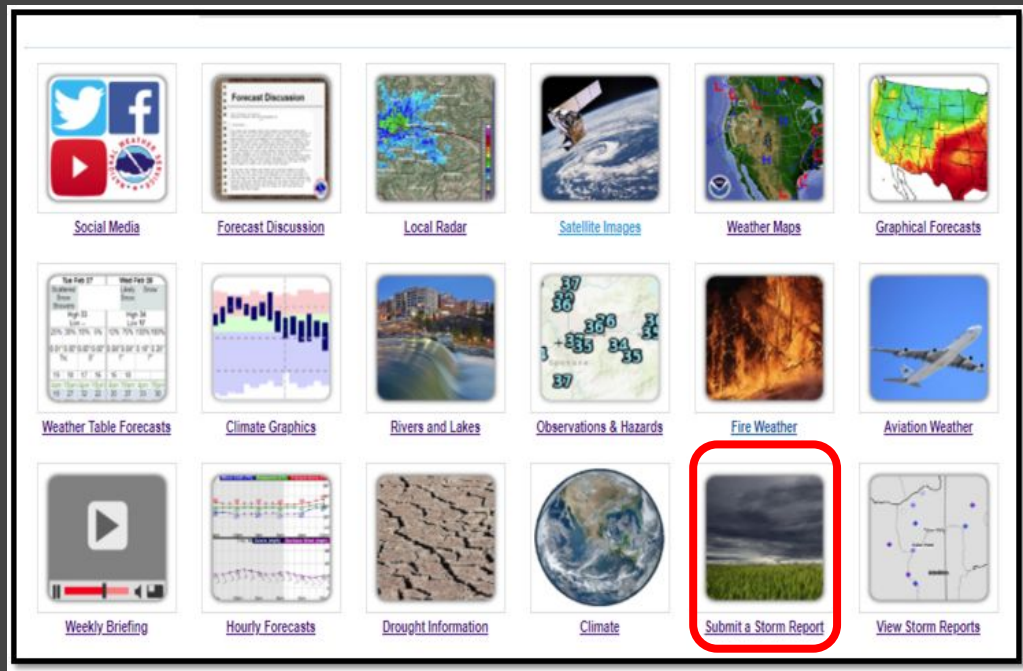
Alerting the NWS to local weather

Report Type -> Details -> Location -> Review and Send

Please select a report type ▼

Back Next

[Privacy policy for weather reports](#)



HOW TO REPORT: THE mPING APP

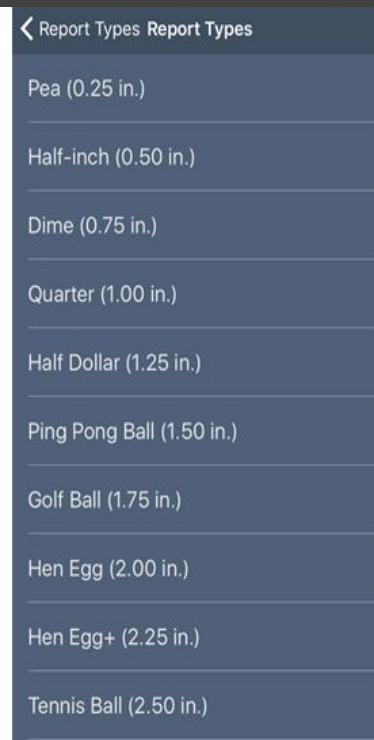
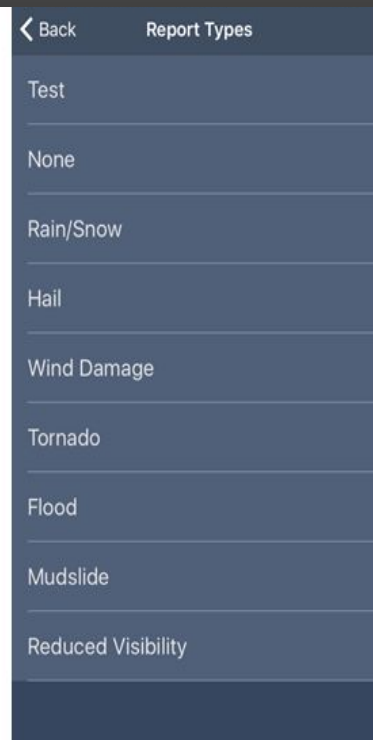
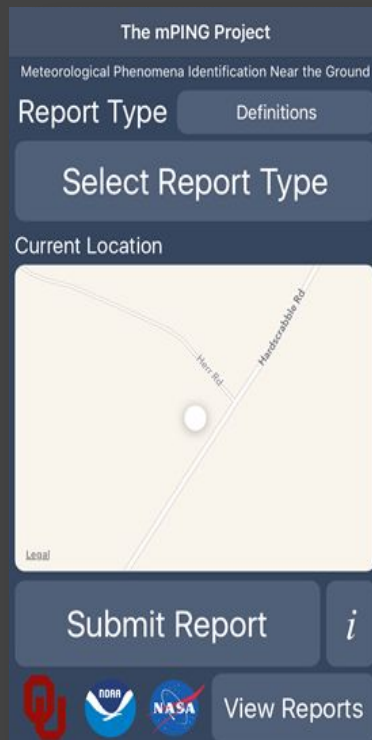
Meteorological Phenomena Identification Near the Ground

FREE APP!

Report everything
EXCEPT TORNADOES
OR FUNNEL CLOUDS



Reports are anonymous and
sent directly to the NWS



NATIONAL WEATHER SERVICE
WEATHER FORECAST OFFICE • SPOKANE, WA

HOW TO REPORT: SOCIAL MEDIA

X/Twitter



- @NWSSpokane
- #wawx & #idwx
- Share reports & pictures
- Monitored 24/7

Facebook



- NWS Spokane
- Send reports & pictures
- Monitored 24/7



Share your weather photos

nws.spokane@noaa.gov

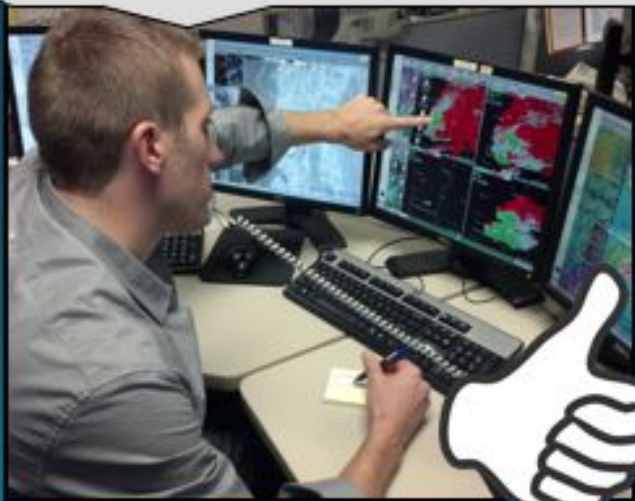


NATIONAL WEATHER SERVICE
WEATHER FORECAST OFFICE • SPOKANE, WA

Examples of Spotter Reports

Good Spotter Report

This is Tom Smith, Spotter Spokane #25 calling from my home on the South Hill. There is currently large hail falling. I measured one stone and it's about the size of a quarter. It began about 30 minutes ago.



Needs Improvement

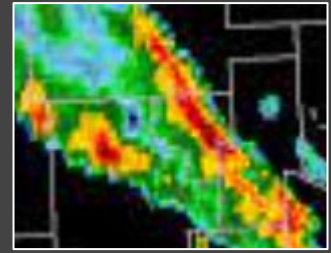
Hi there, how are you doing? Who is this? Well hi Steve! I'm a spotter in Okanogan County. I see lightning to the north and it rained here a little bit ago. The news is saying it's much worse to the south. Are we going to get another thunderstorm? How long is it supposed to last? How's your evening going?



National Weather Service - Spokane, WA



NWS may Contact You!



As a registered weather spotter, you'll share your phone number with the NWS.

If we see severe or hazardous weather near your location...

We will likely try to call you to get information on what you are experiencing (ground truth) based on what is seen on radar!



Emails are Important

Besides a phone number, it's important to share your email address!

You will likely be notified by email before there is a WIDESPREAD Severe Weather Risk or Thunderstorm Outbreak.

We send periodic emails to share quarterly newsletters and upcoming training opportunities.

YOUR NATIONAL WEATHER SERVICE SPOKANE QUARTERLY REPORT

The Weather Watcher

Of the Inland Northwest

www.weather.gov/Spokane



#2 Poll Question

What are essential pieces of information to communicate in a spotter report?



U.S. Thunderstorm Distribution

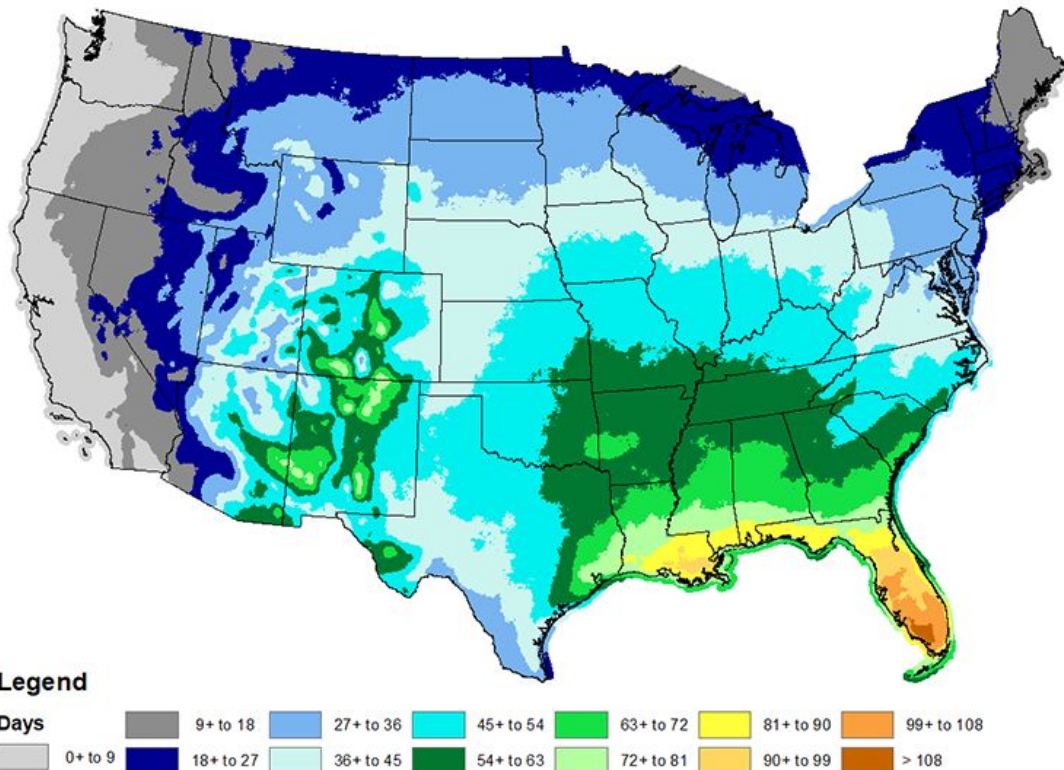
2023 Stats:

Spokane: 19 days

Lewiston: 18 days

Wenatchee: 14 days

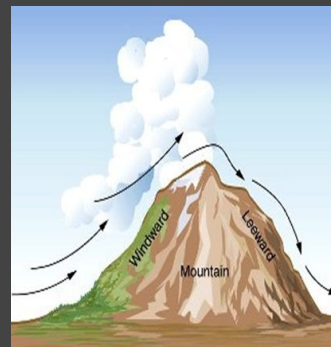
Annual Mean Thunderstorm Days (1993-2018)



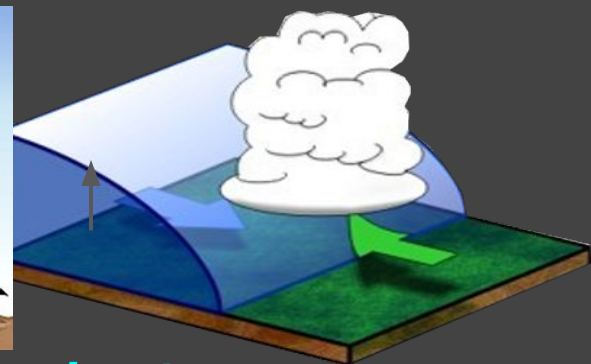
WHAT CREATES A THUNDERSTORM?

Dew Point (°F)	How It Feels
<55°	Dry
55-60°	Comfortable
60-64°	Slightly Humid
65-69°	Humid
70°-75°	Very Humid
>75°	Oppressive

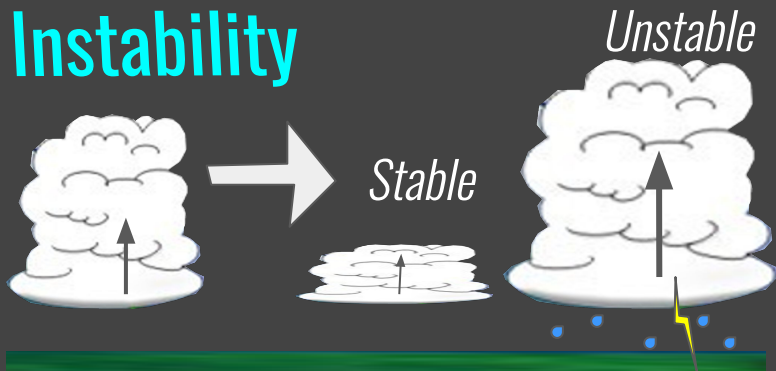
1. Moisture



2. Lifting Mechanism



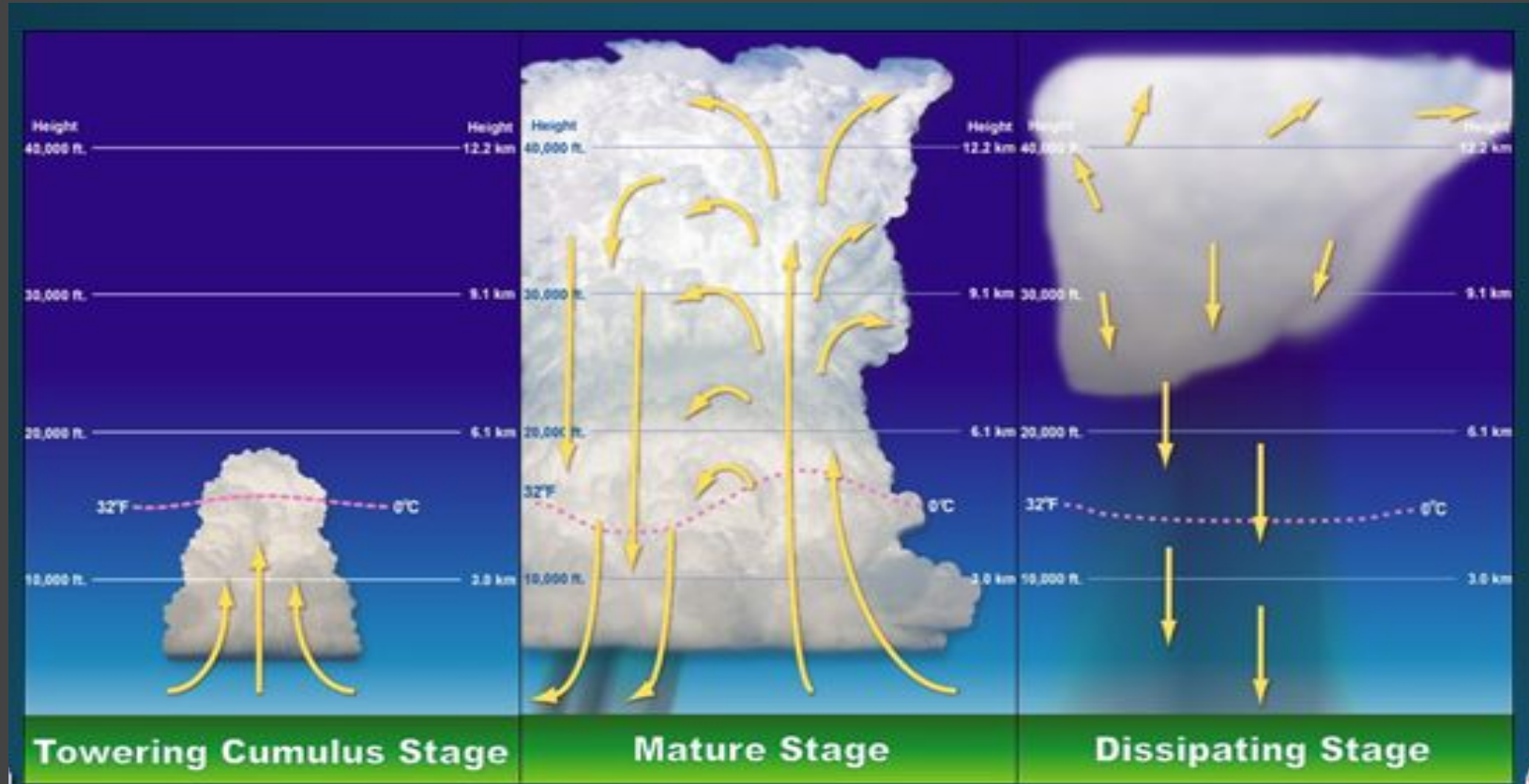
3. Instability



4. Wind Shear



Stages of a Thunderstorm



What is a Severe Thunderstorm?

Winds \geq 58 mph



Hail \geq 1" in diameter



Tornado

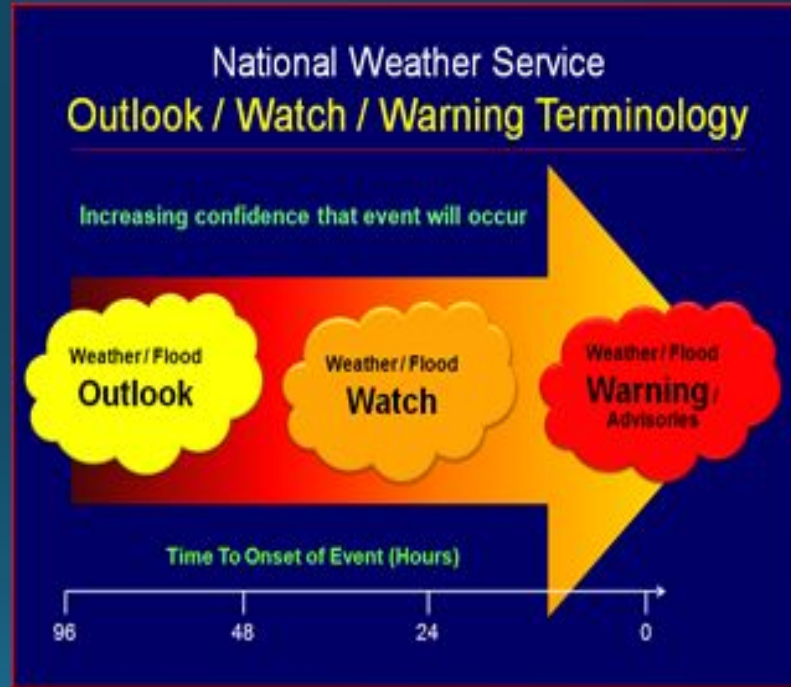


- Less than 10% of all thunderstorms are Severe
- Though Lightning is ALWAYS extremely dangerous, the amount of lightning does not make a storm SEVERE.



STAY INFORMED: NWS Terminology

- **Watch:** Conditions are favorable, but not imminent, for severe weather or flooding
- **Warning:** Severe weather or flooding is imminent or already occurring
- **Advisory:** Minor nuisance or inconvenient weather or flooding is expected, but in most cases not anticipated to adversely affect plans.



Short fused

Tornado
Flash Flood
Severe Thunderstorm

Long fused

High Wind
Flood
Winter Storm
Red Flag



STAY INFORMED: Watch vs. Warning

TACO WATCH

VS

TACO WARNING




**The ingredients are in place
for tacos to happen.**



**We're having tacos
RIGHT NOW!**



STAY INFORMED: STORM PREDICTION CENTER CONVECTIVE OUTLOOKS


Thunderstorms	1-Marginal	2-Slight	3-Enhanced	4-Moderate	5-High
No severe thunderstorms expected	Isolated severe thunderstorms possible	Scattered severe storms possible	Numerous severe storms possible	Widespread severe storms likely	Widespread severe storms expected
Lightning & flooding threats exist with <u>all</u> thunderstorms	Limited in duration and/or coverage and/or intensity	Short-lived and/or not widespread, isolated intense storms possible	More persistent and/or widespread, a few intense	Long-lived, widespread and intense	Long-lived, very widespread and particularly intense
					



STAY INFORMED

NWS Spokane Webpage

www.weather.gov/Spokane



NATIONAL WEATHER SERVICE

NATIONAL OCEANIC AND ATMOSPHERIC ADMINISTRATION

HOME FORECAST PAST WEATHER SAFETY INFORMATION EDUCATION NEWS SEARCH ABOUT


Local forecast by "City, ST" or ZIP code
Enter location: Go
[Location Help](#)

News Headlines

- Volunteer Precipitation Observers Needed...Join CoCoRaHS!
- 2025 Spring Spotter Training Schedule - Register Here!
- Spring Edition of the Weather Watcher Newsletter

MY FORECAST


Spokane WA



Rain

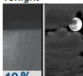
45°F
7°C [Get Detailed Info](#)

Today



70%
Showers Likely and Patchy Fog
High: 57°F

Tonight



10%
Slight Chance Showers then Mostly Cloudy
Low: 36°F

[change location](#)

NWS Forecast Office Spokane, WA


[Weather.gov](#) > Spokane, WA

Spokane, WA
Weather Forecast Office

Current Hazards Current Conditions Radar Forecasts Rivers and Lakes Climate and Past Weather Local Programs

Cool and showery, then warming Spring Spotter Talks

Shows breezy → Mostly clear and warmer



Monday - Thursday (Mar 31-Apr 3)

- Mountain snow showers, scattered valley rain/snow showers
- Monday: 10-20% chance thunderstorms

Friday - Sunday (Apr 4-6)

- Warming Trend, clearing skies
- High temperatures warming into 60s next weekend (a few low 70s possible next Sunday)

Issued: 6:25 AM - Monday, March 31, 2025

[Show Caption](#)

Click a location below for detailed forecast.



Watches, Warnings & Advisories

There are no watches, warnings, or advisories at this time.

Last Map Update: Mon, Mar 31, 2025 at 10:16:32 am PDT

Text Product Selector (Selected product opens in current window)

Latest Text Products Issued by OTX



Social Media



Forecast Discussion



Local Radar



Satellite Images



Weather Maps



Graphical Forecasts



Weather Table Forecasts



Climate Graphics



Rivers and Lakes



Observations & Hazards



Fire Weather



Aviation Weather



YouTube Channel



Hourly Forecasts



Drought Information



Climate



Submit a Storm Report



View Storm Reports

Follow us on Twitter Follow us on Facebook Follow us on YouTube

OTX RSS Feed

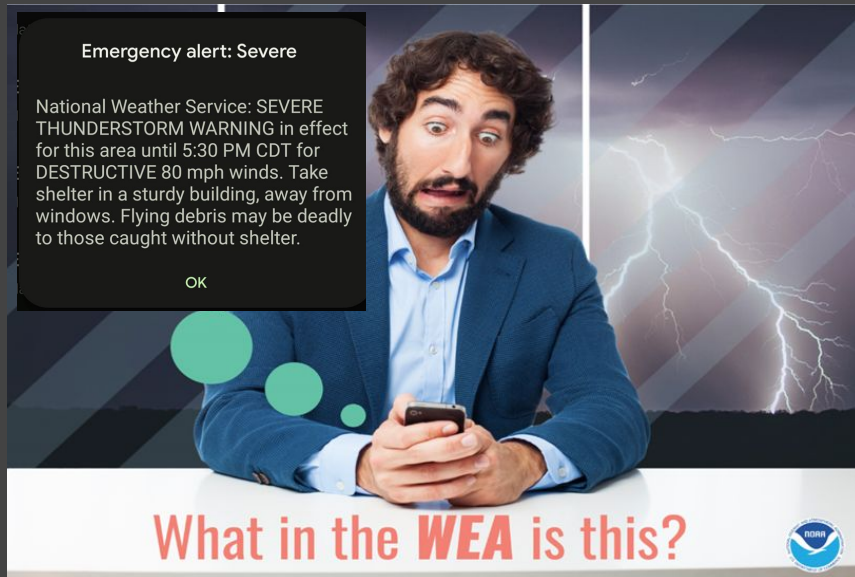
STAY INFORMED

Wireless Emergency Alerts (WEA)

WEA warns the public about dangerous weather, missing children, and other critical situations with a text-like message on your mobile device.

WEA-capable mobile devices will receive:

- Tornado Warnings (TOR)
- Severe Thunderstorm Warnings (SVR)*
- Flash Flood Warnings (FFW)**
- Dust Storm Warning
- Extreme Wind Warning
- Snow Squall Warning



Only *SVRs* with 80 mph wind or 2.75" diameter hail (baseball) tags will transmit over WEA!

Only *FFWs* with *CONSIDERABLE* or *CATASTROPHIC* damage tags will transmit over WEA!



Stay Informed

FEMA App



Download the FEMA App Today

Get Access to:

- Weather Alerts
- Disaster Resources
- Preparedness Tips

Apple



Android



NATIONAL WEATHER SERVICE
WEATHER FORECAST OFFICE • SPOKANE, WA

Stay Informed

NOAA Weather Radio

Continuous operation.

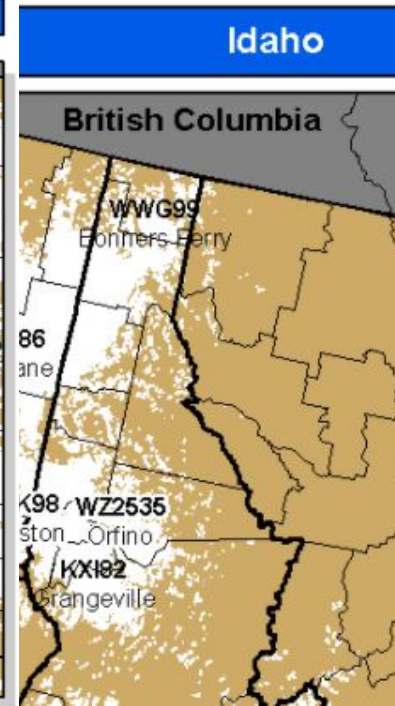
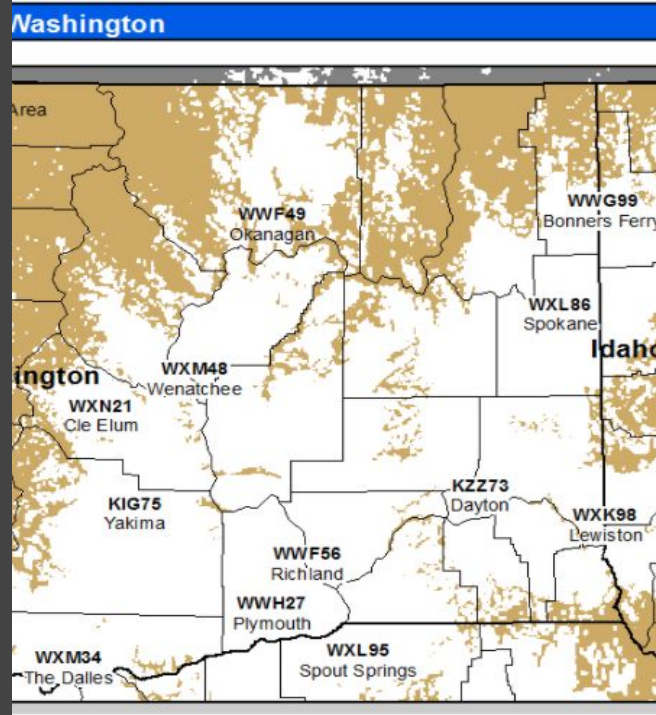
Battery backup capable.

Handheld device great for outdoor activities.

Can drive across the country and get info anywhere along path.

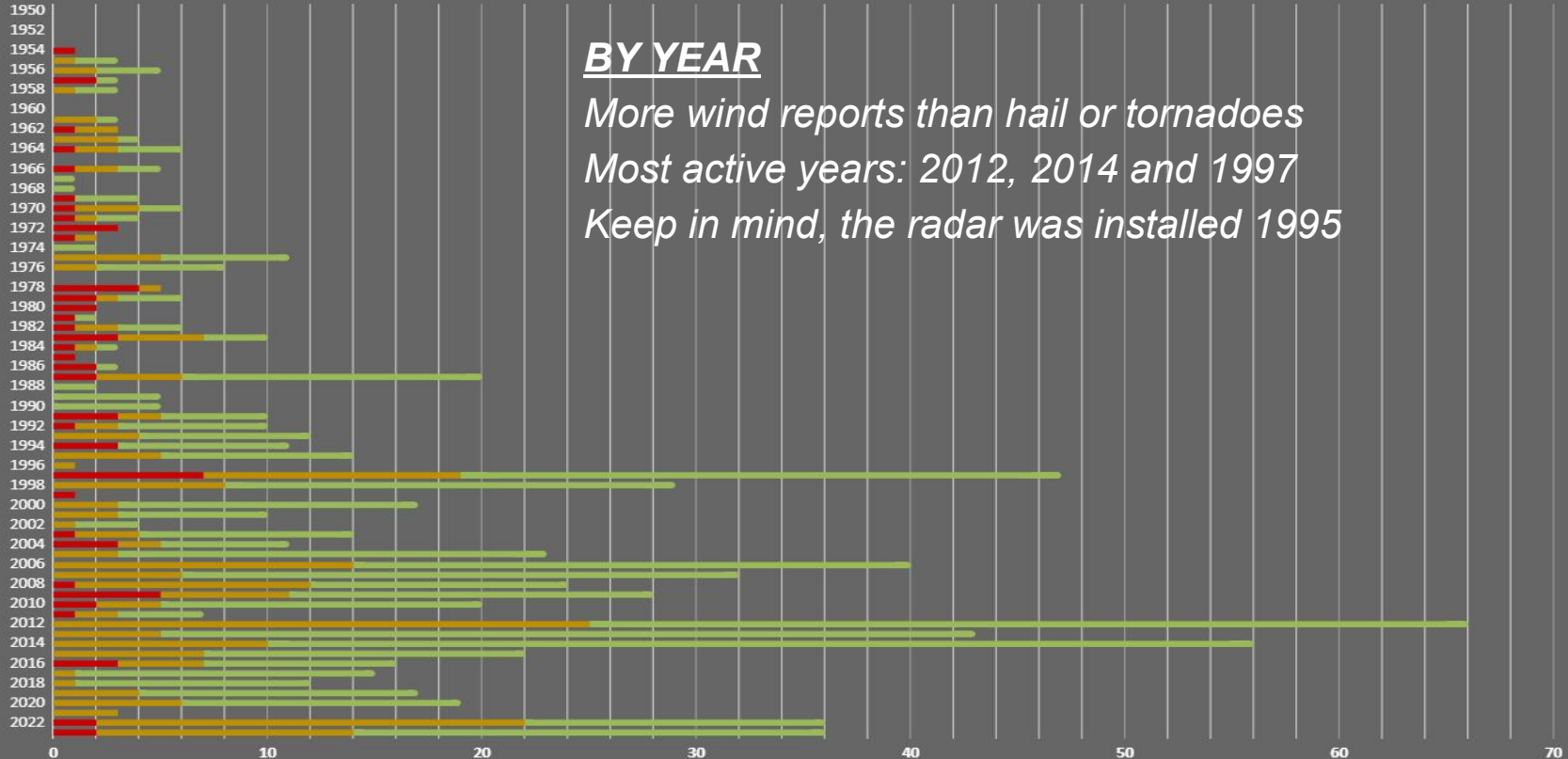


Radio stations
broadcasting weather
info 24/7/365.



Local Severe Weather Climatology

■ Tornadoes ■ Severe Hail ■ Severe T-Storm Winds



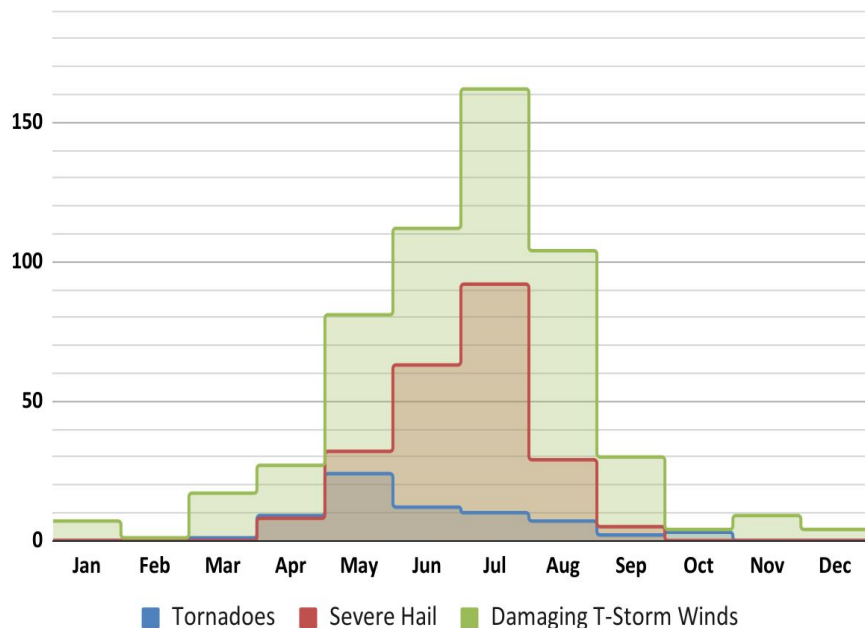
Local Severe Weather Climatology

BY MONTH

Peak month for Damaging Winds/Hail – July

Peak month for Tornadoes – May

Had severe reports in Nov through Jan

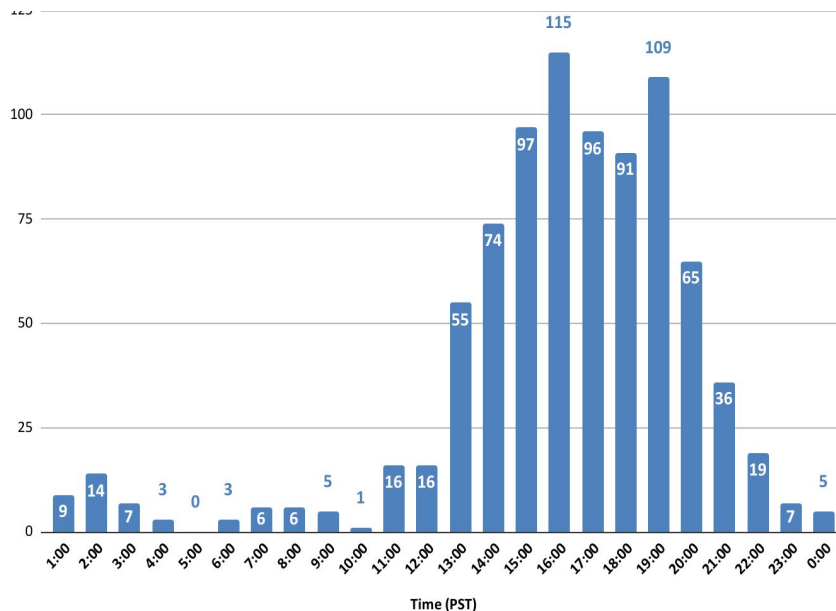


BY TIME OF DAY

Most active mid afternoon to mid evening

Less active in the morning

Still get wind reports late at night



#3 Poll Question

What ingredients are needed to create a thunderstorm?



WHAT TO REPORT: TORNADOES

Look at the ground...look at the cloud base...is it in contact with both?

If yes...TORNADO!

If no...most likely funnel cloud or dust devil

Typical Inland NW Tornado

- Less than 5 minutes on the ground (radar scan ~4mins)
- ¼ mile track
- Max wind speeds of 80-110 mph
- Mostly EF0 to EF1

Coulee City - July 2023



kxly 4 News VIEWER PICTURES

MARK IN AIRWAY HEIGHTS

Airway Heights - July 2016



Spokane - May 2022



Spokane - July 2016



How are Tornadoes Measured?

EF Rating	Wind Speeds	Expected Damage	
EF-0	65-85 mph	'Minor' damage: shingles blown off or parts of a roof peeled off, damage to gutters/siding, branches broken off trees, shallow rooted trees toppled.	
EF-1	86-110 mph	'Moderate' damage: more significant roof damage, windows broken, exterior doors damaged or lost, mobile homes overturned or badly damaged.	
EF-2	111-135 mph	'Considerable' damage: roofs torn off well constructed homes, homes shifted off their foundation, mobile homes completely destroyed, large trees snapped or uprooted, cars can be tossed.	
EF-3	136-165 mph	'Severe' damage: entire stories of well constructed homes destroyed, significant damage done to large buildings, homes with weak foundations can be blown away, trees begin to lose their bark.	
EF-4	166-200 mph	'Extreme' damage: Well constructed homes are leveled, cars are thrown significant distances, top story exterior walls of masonry buildings would likely collapse.	
EF-5	> 200 mph	'Massive/incredible' damage: Well constructed homes are swept away, steel-reinforced concrete structures are critically damaged, high-rise buildings sustain severe structural damage, trees are usually completely debarked, stripped of branches and snapped.	

After the storms have passed, NWS will conduct surveys to assess the tornado damage. We use a list of damage indicators that align with the Enhanced Fujita Scale.

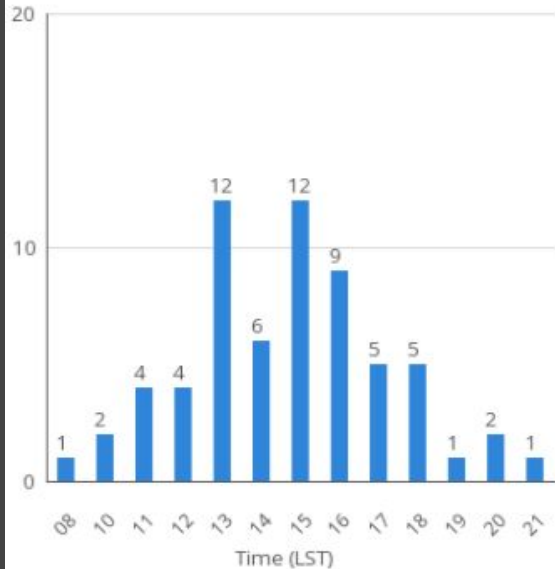


Inland NW Tornado Stats ~ 64 reports (1936-2016)

*In Spokane metro area: last time tornado spotted was 2022
There have been 15 tornadoes in the metro area.*

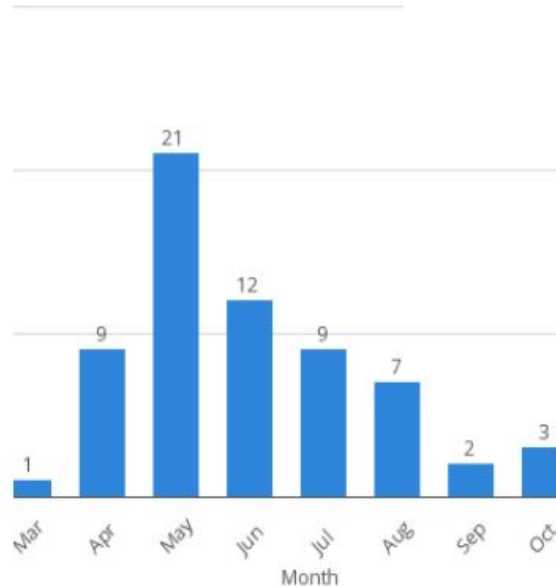
Tornadoes by time of day

Total number of tornadoes by time of day



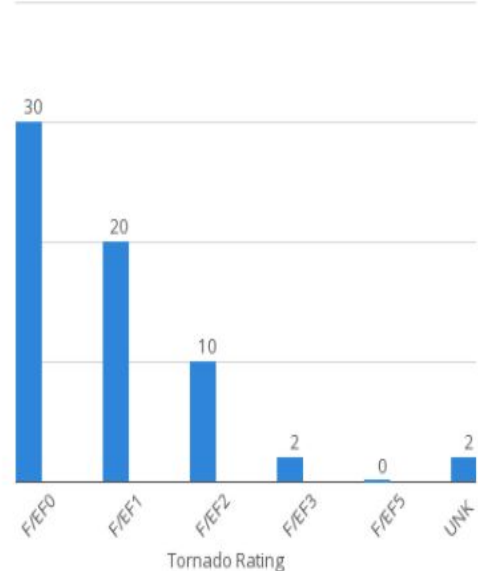
Tornadoes by month

Total number of tornadoes by month



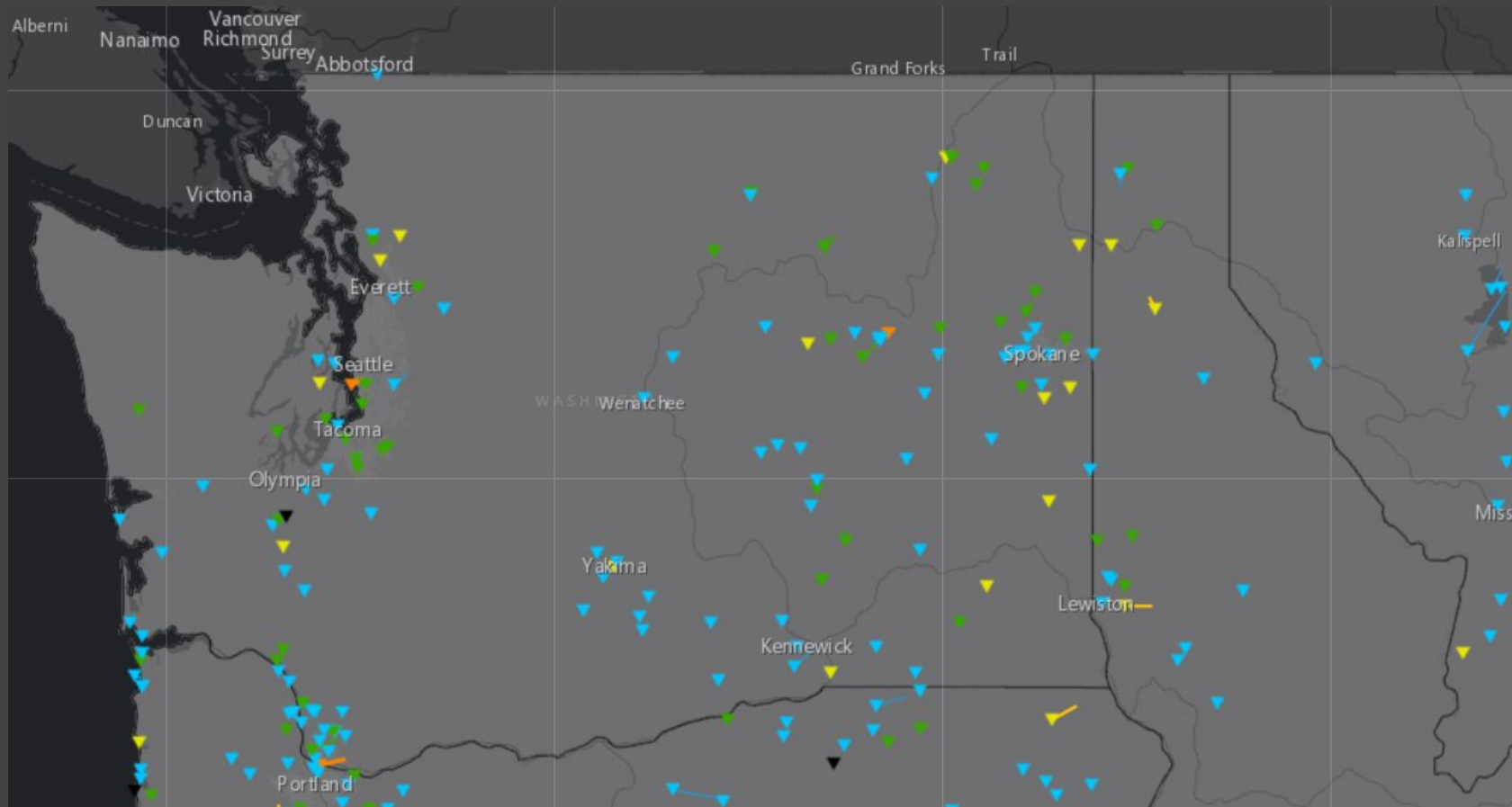
Tornadoes by rating

Total number of tornadoes by RATING from 1936 to 2016



Tornado Tracks 1950-2023

<https://mrcc.purdue.edu/gismaps/cntytornd#>



NATIONAL WEATHER SERVICE
WEATHER FORECAST OFFICE • SPOKANE, WA

What about Funnel Clouds & Dust Devils?

- Funnel clouds stay aloft attached to storm cloud
- Dust devils start at the ground and extend upward
- Tornadoes extend from storm cloud to the ground
- In doubt, check for cloud cover and debris on ground
- Take a picture and share!



Tornado - May 6, 2022 - Spokane



NATIONAL WEATHER SERVICE
WEATHER FORECAST OFFICE • SPOKANE, WA

NON-SUPERCCELL TORNADOES



- Landspouts are narrow, rope-like condensation funnels that reach the ground.
- Landspouts form during the towering cumulus or mature stage of a thunderstorm.
- There is no rotating updraft - spinning originates near the ground.



Cloud Types

Scud clouds - ragged



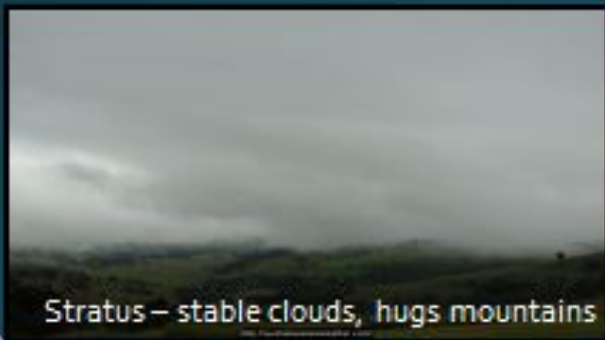
Cumulus



Towering Cumulus



Stratus – stable clouds, hugs mountains



Wall cloud – lowering cloud base/ rotation



National Weather Service Spokane



#4 Poll Question

Identify this image.



WHAT TO REPORT: STRONG WINDS



30-40 mph

- Whole trees in motion



40-50 mph

- Twigs / Small branches breaking



50-58 mph

- Branches / Small limbs breaking



58-75 mph

- Large branches broken / Structural damage?



Over 75 mph

- Loss of roofing / Trees uprooted or snapped



May 6, 2022



January 13, 2021



WHAT TO REPORT: HAIL



Pea = $\frac{1}{4}$ inch



Penny = $\frac{3}{4}$ inch



Nickel = .88 inch



Quarter = 1 inch



Half Dollar = $1\frac{1}{4}$ inch



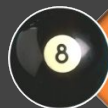
Walnut = $1\frac{1}{2}$ inch



Golf Ball = $1\frac{3}{4}$ inch



Egg = 2 inch



Billiard Ball = $2\frac{1}{4}$ inch



Tennis Ball = $2\frac{1}{2}$ inch



Baseball = $2\frac{3}{4}$ inch



Softball = $4\frac{1}{2}$ inch

If a ruler isn't available, reference
hail to a common object



NO MARBLES!



*Otis Orchards -
August 2022*



NATIONAL WEATHER SERVICE
WEATHER FORECAST OFFICE • SPOKANE, WA

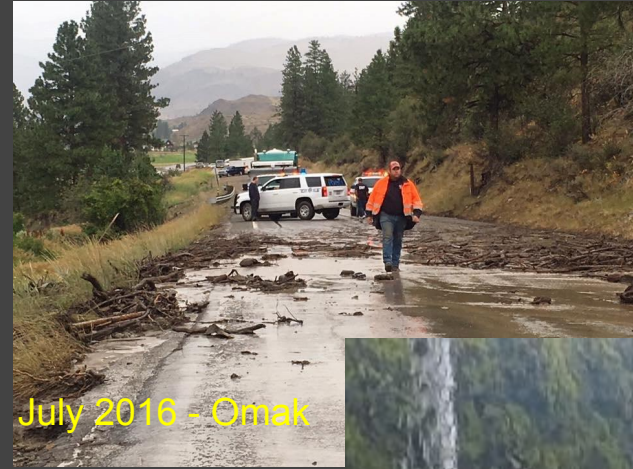
WHAT TO REPORT: HEAVY RAIN

Report heavy downpours or long periods of steady rain
Give specific locations - streets and creeks

- 0.50"+ in 1 hour - convective
- 1.0" in 12 hours or 1.5"+ in 24 hours - stratiform



Spokane - May 6, 2022



July 2016 - Omak



WHAT TO REPORT: FLOODS

Rising water on rivers, streams & low spots
Give specific locations of streams & streets



Wenatchee - Sept 2019



Williams Flats Fire Flood - Aug 11, 2019



Moscow - April 2019



Spokane - May 6, 2022



April 9, 2019 - Pullman



WHAT TO REPORT: MUD & DEBRIS FLOWS

Water-saturated rock, mud and debris moving down a slope

Give specific locations, roadways or intersections

Post-fire Floods



WHAT TO REPORT: DUST STORMS

- Prolonged dry spell + strong winds + plowed fields
- Sudden reduction in visibility
- Give locations of roads and intersections
- Also called Haboobs
- If widespread, can lead to air quality issues
- Keep in mind - Smoke can limit visibilities as well.

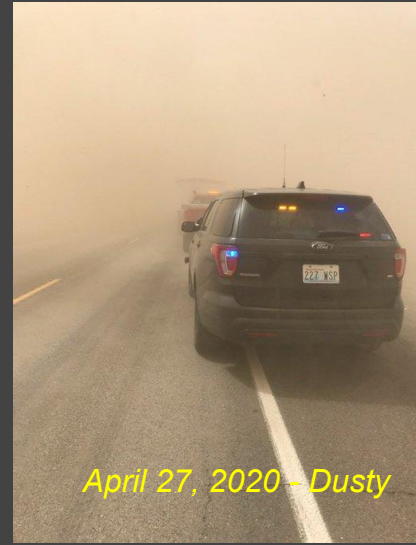
Harrington - Aug 2014



April 11, 2020 - Ritzville



April 27, 2020 - Dusty



Odessa - Aug 2014



#5 Poll question

Identify this image.



© UCAR, Photo by Carlye Calvin



NATIONAL WEATHER SERVICE
WEATHER FORECAST OFFICE • SPOKANE, WA

Spotter Safety

- Personal Safety is the Primary Objective of every spotter
- Protect You and Your Family First
- Do NOT put yourself in harm's way
 - Don't walk or drive over obstructions as flooded roads or downed power lines
 - Don't put yourself under objects that have the potential to fall or be blown over
- **ACES - Awareness, Communication, Escape Route and Safe Zones**



Pullman, May 2020



Spokane, Jan 2021



Moscow, April 2019



WEATHER SAFETY: LIGHTNING

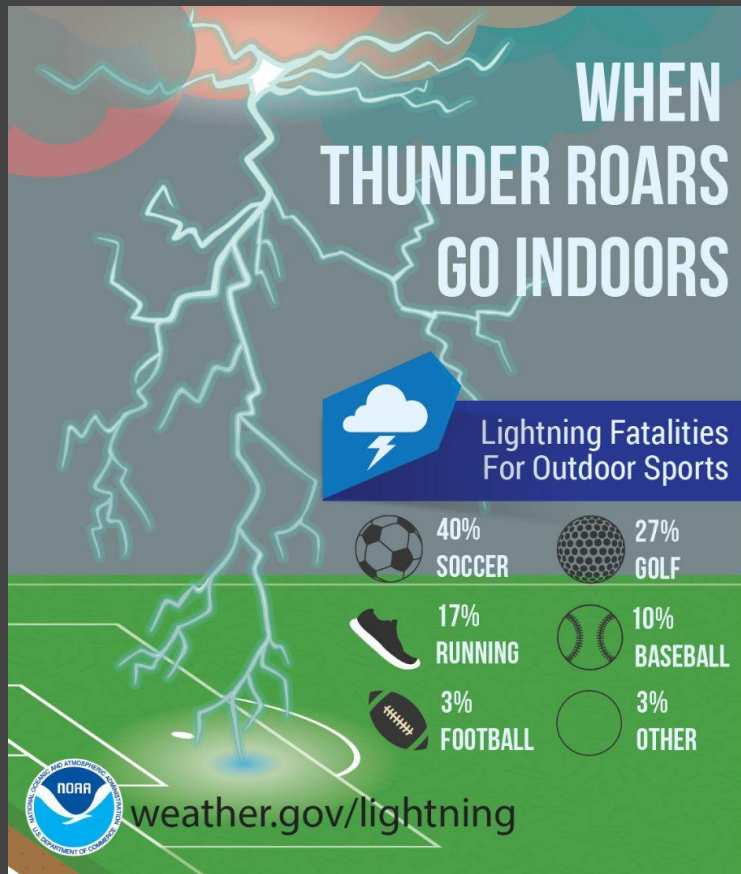
- Lightning can strike as far as 10 miles from the thunderstorm.
- More than 50% of lightning deaths occur AFTER the storm has passed



Seek Safe Shelter indoors - or vehicle if needed
Stay away from windows & doors
Don't use a corded phone or take a bath/shower



WEATHER SAFETY: LIGHTNING



WEATHER SAFETY: LARGE HAIL



Speeds of Falling Hail By Size

Dime size	35 mph
Quarter size	50 mph
Golf Ball	66 mph
Baseball	85 mph
Softball	100+ mph

Terminal velocity of an object assumes a round smooth surface



WEATHER SAFETY: TORNADOES



OUTSIDE

- Cars are NOT safe!
 - Drive to the nearest sturdy building and seek shelter
 - Abandon the vehicle and find an area noticeably lower than the level of the road – lie down and cover your head.

Treat Severe Thunderstorm or High Wind Warnings Seriously! Straight line winds can be as destructive as a Tornado

INSIDE

- Seek shelter in a strong building
- Lowest level of a sturdy building (basement is best)
- Small interior room away from windows (bathroom or closet)
- Put as many walls between you and the outside as possible
- Abandon mobile homes - move to a sturdy shelter close by



WEATHER SAFETY: FLASH FLOODS

Don't underestimate the power of water!



6 inches of fast-moving water can knock over and carry away an adult.

12 inches of fast-moving water can carry away a small car.

18-24 inches of fast-moving water can carry away most large SUVs, vans and trucks.



IT ONLY TAKES about 12-18" to turn your vehicle into a

BOAT!



NATIONAL WEATHER SERVICE
WEATHER FORECAST OFFICE • SPOKANE, WA

#6 Poll question

Where is a safe place to go during a flood?



Be Prepared - Disaster Kits and Disaster Plans

- **Water**, one gallon of water per person per day for at least three days
- **Food & medicine/prescriptions**, at least a three-day supply
- **Radio**, battery-powered or hand crank radio and a NOAA Weather Radio with tone alert and extra batteries for both
- **Flashlight and extra batteries**
- **First aid kit**
- **Whistle** to signal for help
- **Dust mask** to help filter contaminated air and plastic sheeting and duct tape to shelter-in-place
- **Moist towelettes, garbage bags and plastic ties** for personal sanitation
- **Wrench or pliers** to turn off utilities
- **Manual can opener** for food
- **Local maps**
- **Cell phone with chargers, inverter or solar charger**



<http://www.ready.gov/kit>



Other Ways to Get Involved

- ☒ Weather Spotter
- ☐ Join the Community Collaborative Rain, Hail, and Snow Network
- ☐ Join the Citizens Weather Observers Program



Community Collaborative Rain, Hail and Snow Network - CoCoRaHS

Help Observe Precipitation in your Community

www.cocorahs.org

Volunteer take readings once a day - transmit on mobile device

CoCoRaHS Volunteers Across The Country

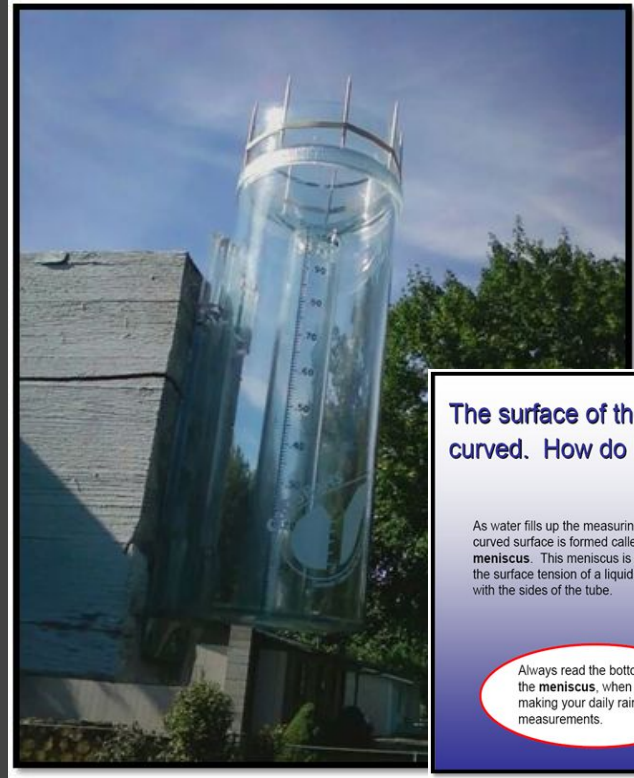
A screenshot of the CoCoRaHS mobile application interface. The screen is blue with white text and features the CoCoRaHS logo at the top left. The form displays the following information: "CO-LR-610 Fort Collins 3.5 SW", "Precipitation Report", "Observation Date: 2015-05-13", "Observation Time: 07:00", and "Rain/Melted Snow: 0.00". There are two toggle switches: "Trace Precip" (turned on) and "Metric Units (mm/cm)" (turned off). A "Submit" button is at the bottom. The top of the screen shows "Logout", "Precip Report", and "Details" options. The bottom of the screen has a "Report" icon and a "History" icon.

NATIONAL WEATHER SERVICE
WEATHER FORECAST OFFICE • SPOKANE, WA

Community Collaborative Rain, Hail and Snow Network - CoCoRaHS

Five easy steps

1. Sign-up at on the CoCoRaHS web site www.cocorahs.org
2. Obtain a 4" plastic rain gauge
3. View the online "training slide show"
4. Set up the gauge in a "good" location in your yard - away from trees
5. Start observing precipitation and report online daily



The surface of the water in the gauge looks curved. How do I know where to read?

As water fills up the measuring tube, a curved surface is formed called a **meniscus**. This meniscus is formed by the surface tension of a liquid in contact with the sides of the tube.



Always read the bottom of the **meniscus**, when the making your daily rain measurements.



Citizen Weather Observer Program - CWOP



www.wxqa.com

- Have a weather station and want to share data online
- Has a PC and Internet access
- Register Online & Receive a weather station ID
- Transmits data every 15 mins



Different programs - All useful to the NWS

Spotter

Severe Weather

No instruments
required

Event driven

[Weather.gov](https://weather.gov)

CoCoRaHS

Precipitation
only

Rain gauge
required

Daily
commitment

[Cocorahs.org](https://cocoahs.org)

CWOP

Weather data

Weather station

Daily
commitment

[Wxqa.com](https://wxqa.com)



Weather Spotter Resources Online

weather.gov/otx/Spotter_Resource_Page

- Latest radar & satellite images
- Current watches, warnings & forecasts
- Latest NWS Storm Reports
- Maps of NOAA Weather Radio frequencies
- Current & Past Newsletters
- Spotter Guide
- Additional training resources - **MetEd**
- www.weather.gov/jetstream/

What about Weather Spotter Training?

Spotter training sessions are important and needed to stay current on severe weather spotting. The sessions are conducted by the National Weather Service in the spring and fall. It's an opportunity for spotters to review basic spotter techniques and weather safety concerns.

- [Spotter Training Schedule](#) will be posted when and where classes are offered.
- Recorded Spotter training is available locally and nationally

Locally Recorded Spotter Training

Fall Spotter Training 2024 Slides	Snow Measurement Training 2024 Slides
Basic Spotter Training 2024 Slides	Advanced Spotter Training 2024 Slides

National Spotter and Observer Training

COMET MetEd	CoCoRaHS
SKYWARN Spotter Training - Basic	CoCoRaHS slide shows
Role of the SKYWARN Spotter	CoCoRaHS videos
SKYWARN Spotter Convective Basics	Wx Talks Webinars

MetEd

SKYWARN[®] Spotter Convective Basics
Presented by the COMET Program



Begin »

- MetEd Home
- COMET Home
- Print Version
- Download Version
- Mobile App
- User Survey
- Feedback
- Contributors
- Text Notes

Copyright 2011. University Corporation for Atmospheric Research. All Rights Reserved. Legal Notices



NATIONAL WEATHER SERVICE
WEATHER FORECAST OFFICE • SPOKANE, WA

#7 Poll question

What are some items to have in an Emergency Kit?



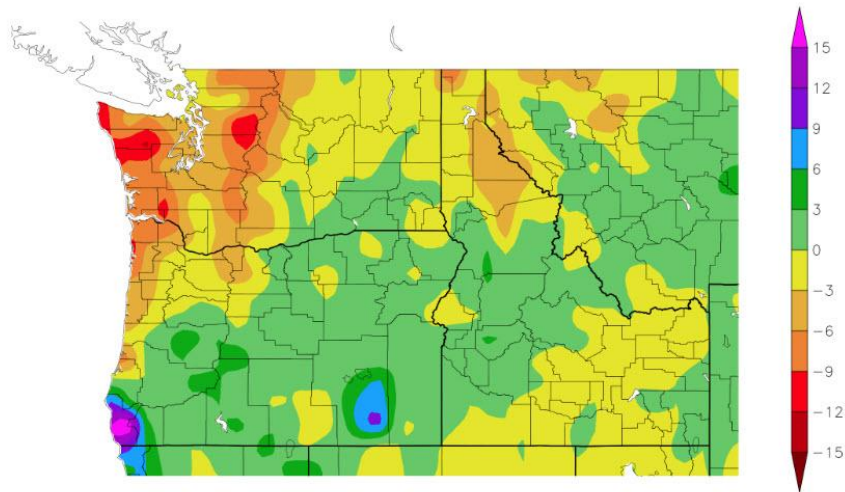
Seasonal Outlook 2025

wrcc.dri.edu/

Since the start of the Calendar Year...

Precipitation

Departure from Normal Precipitation (in)
1/1/2025 - 4/13/2025

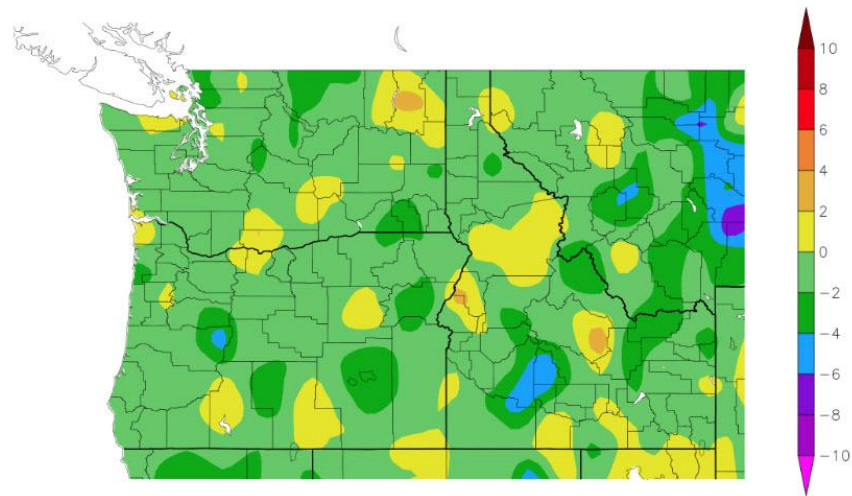


Generated 4/14/2025 at HPRCC using provisional data.

NOAA Regional Climate Centers

Temperature

Departure from Normal Temperature (F)
1/1/2025 - 4/13/2025



Generated 4/14/2025 at HPRCC using provisional data.

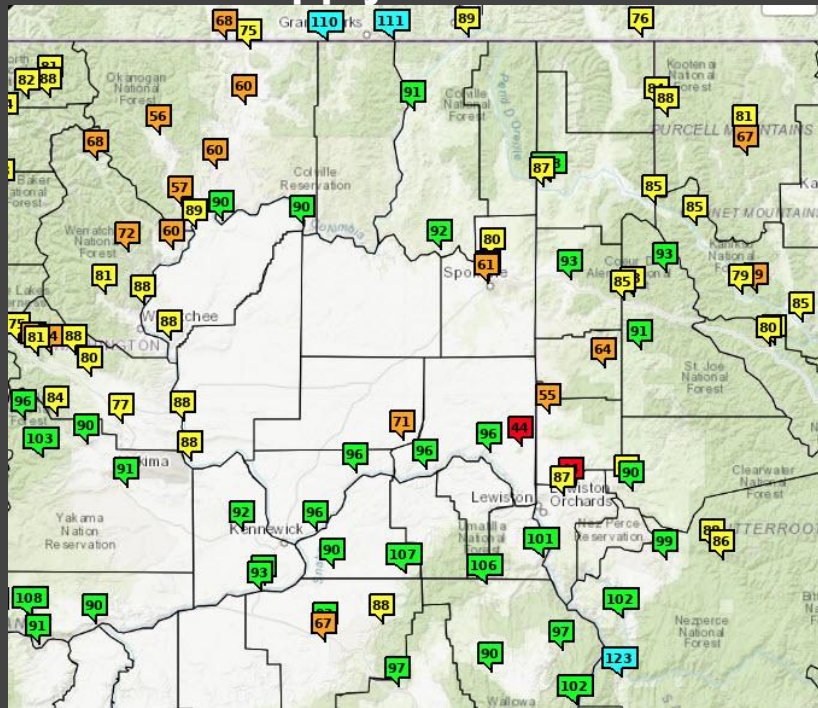
NOAA Regional Climate Centers



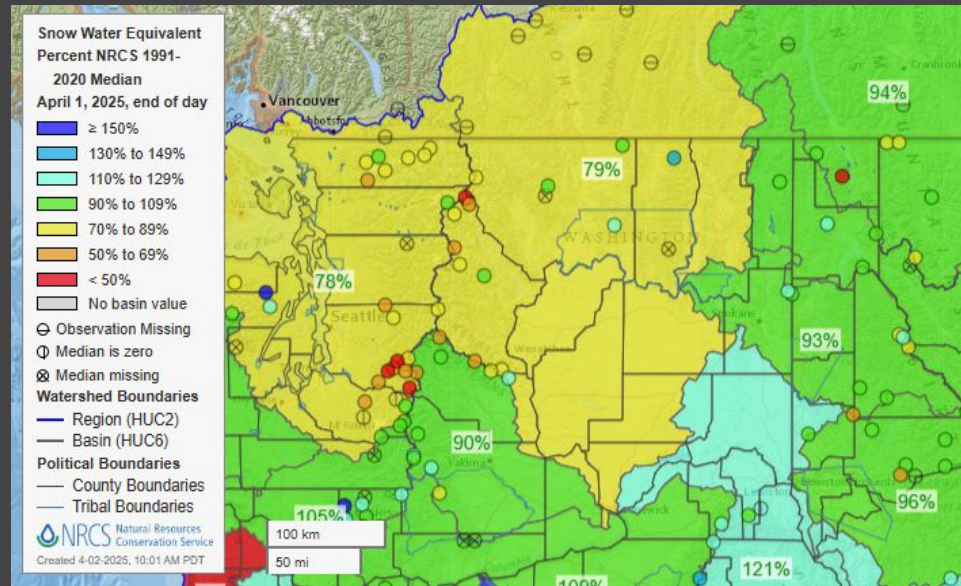
NATIONAL WEATHER SERVICE
WEATHER FORECAST OFFICE • SPOKANE, WA

Seasonal Outlook 2025

Water Supply Outlook



Snow Water Equivalent

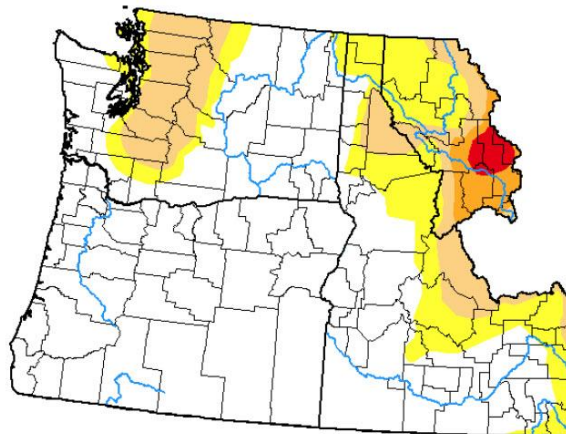


Seasonal Outlook 2025

US Drought Monitor & Seasonal Outlook

cpc.ncep.noaa.gov

U.S. Drought Monitor Pacific Northwest DEWS



April 8, 2025

(Released Thursday, Apr. 10, 2025)

Valid 8 a.m. EDT

Drought Conditions (Percent Area)

	None	D0-D4	D1-D4	D2-D4	D3-D4	D4
Current	69.99	30.01	14.22	3.01	0.87	0.00
Last Week 04-01-2025	69.99	30.01	14.22	3.09	0.87	0.00
3 Months Ago 01-07-2025	61.17	38.83	14.59	4.29	1.75	0.00
Start of Calendar Year 01-01-2025	61.17	38.83	14.59	4.29	1.75	0.00
Start of Water Year 10-01-2024	13.07	86.93	56.26	11.40	2.27	0.49
One Year Ago 04-08-2024	58.41	41.59	19.67	7.06	0.00	0.00

Intensity

None	D2 Severe Drought
D0 Abnormally Dry	D3 Extreme Drought
D1 Moderate Drought	D4 Exceptional Drought

The Drought Monitor focuses on broad-scale conditions. Local conditions may vary. For more information on the Drought Monitor, go to <https://droughtmonitor.unl.edu/About.aspx>

Author:

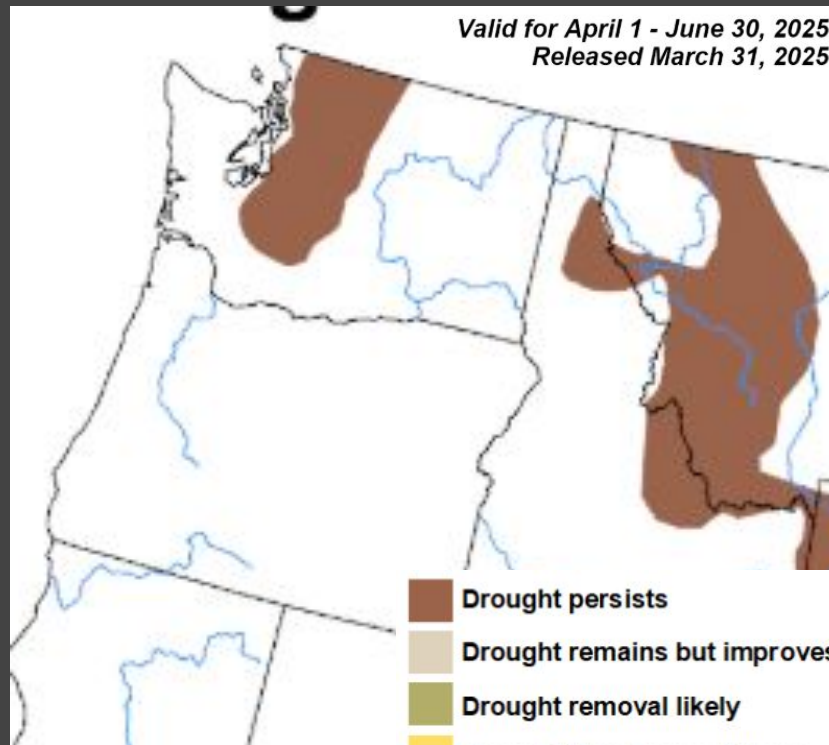
David Simeral
Western Regional Climate Center



droughtmonitor.unl.edu

Valid for April 1 - June 30, 2025

Released March 31, 2025



- Drought persists
- Drought remains but improves
- Drought removal likely
- Drought development likely



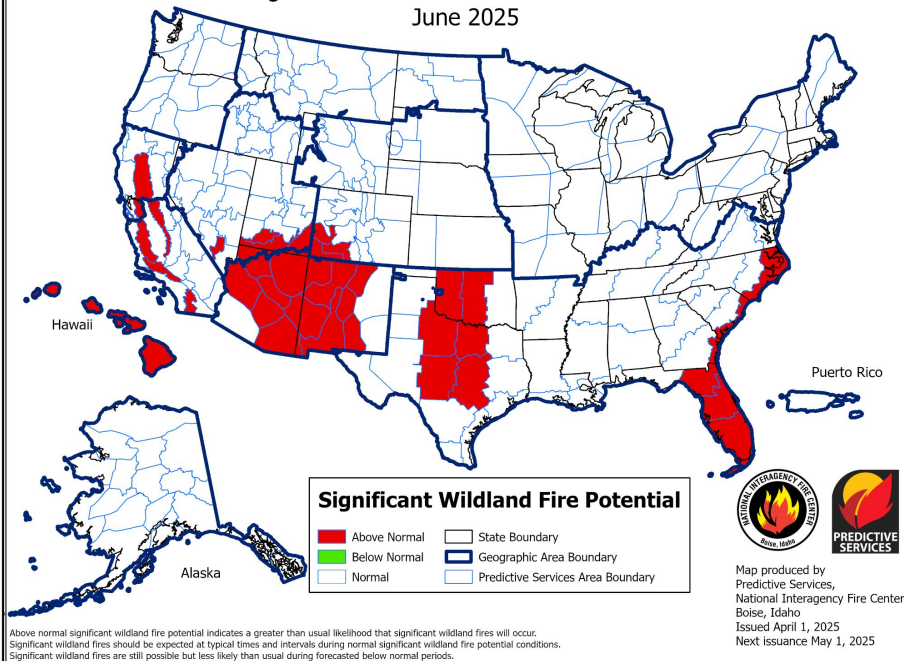
NATIONAL WEATHER SERVICE
WEATHER FORECAST OFFICE • SPOKANE, WA

Seasonal Outlook 2025

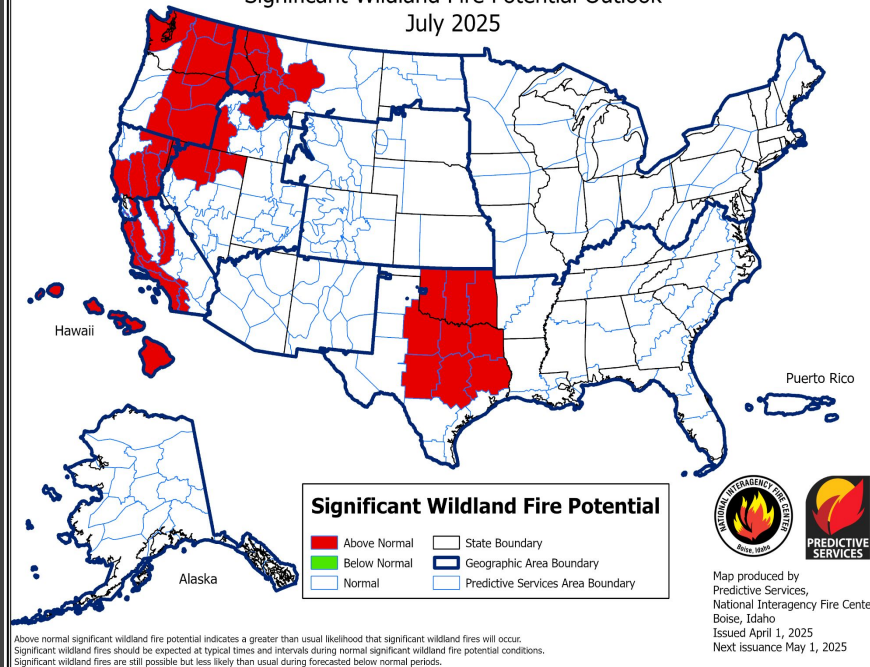
Wildland Fire Potential

www.nifc.gov

Significant Wildland Fire Potential Outlook
June 2025



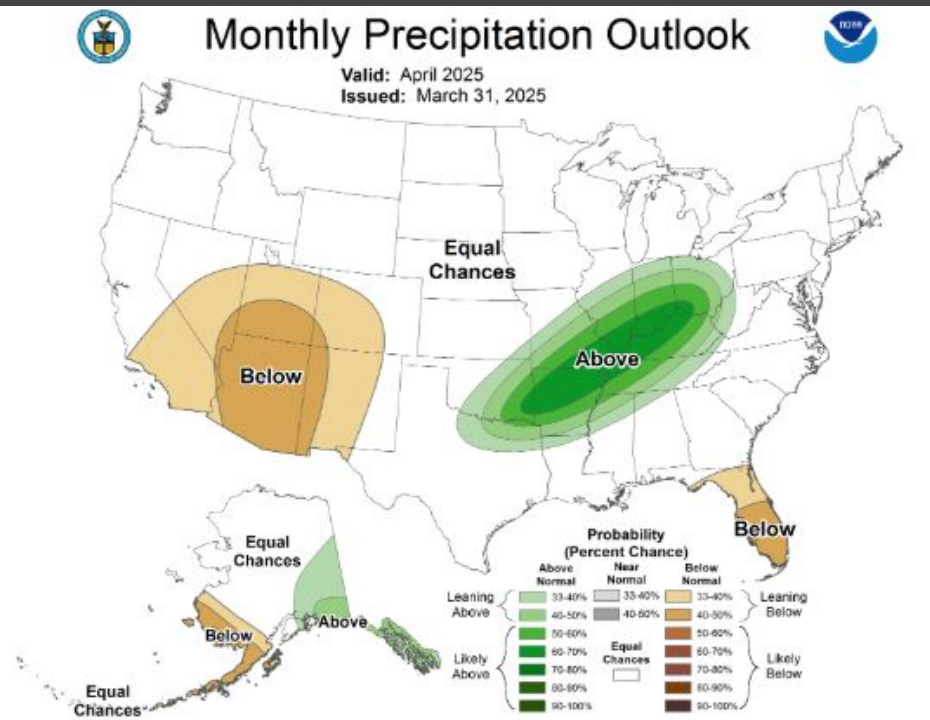
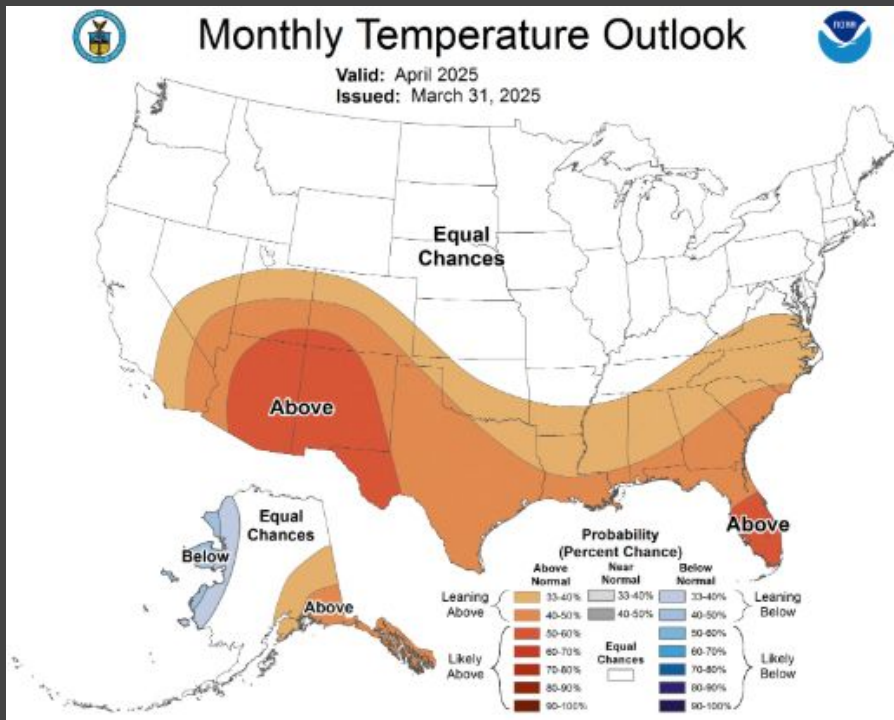
Significant Wildland Fire Potential Outlook
July 2025



Monthly Outlook 2025 - April

One Month Outlook

www.cpc.noaa.gov



NATIONAL WEATHER SERVICE
WEATHER FORECAST OFFICE • SPOKANE, WA

Seasonal Outlook 2025 - May through July

3 Month Outlook

www.cpc.noaa.gov



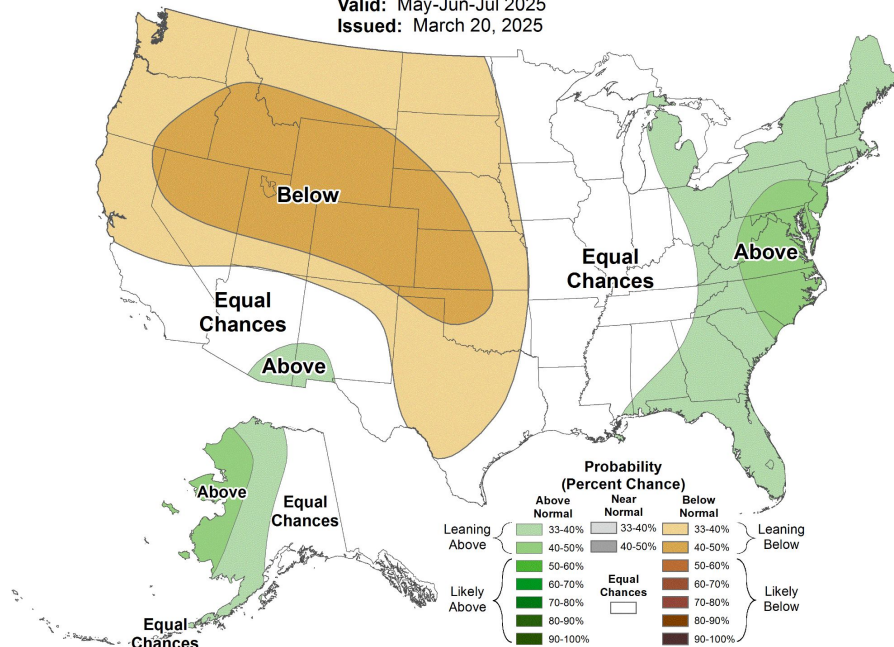
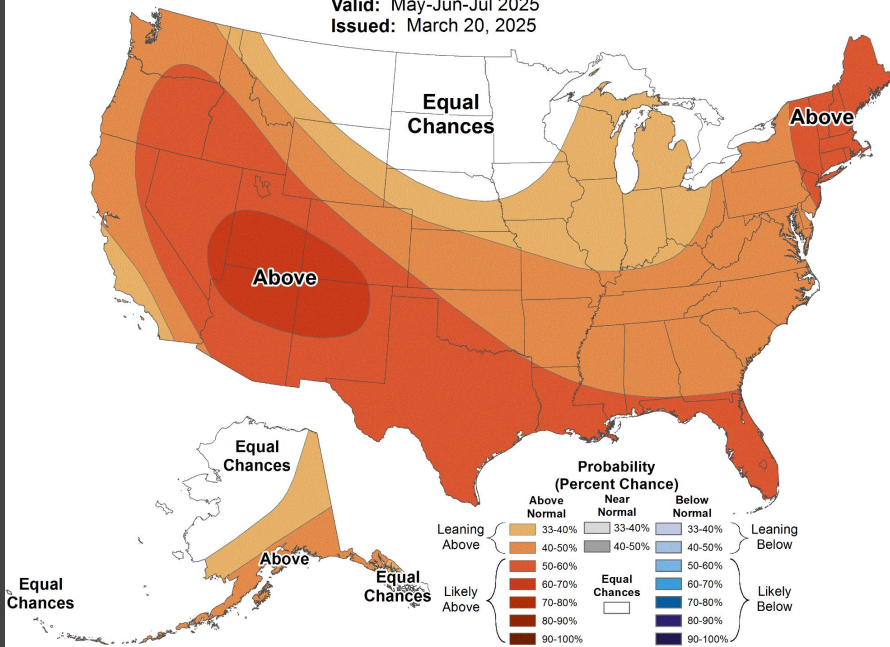
Seasonal Temperature Outlook

Valid: May-Jun-Jul 2025
Issued: March 20, 2025



Seasonal Precipitation Outlook

Valid: May-Jun-Jul 2025
Issued: March 20, 2025



NATIONAL WEATHER SERVICE
WEATHER FORECAST OFFICE • SPOKANE, WA

NWS + Weather Spotters = Saved Lives

nws.spokane@noaa.gov

What's Next?

THANK YOU!

You will receive a follow-up email

- register as a weather spotter
- Spotter ID
- Spotter training certificate

Any Questions?

I will unmute you - then you unmute yourself to talk.

View from Steptoe Butte, May 2018

