



Drought Information Statement for Eastern Washington & North Idaho

Valid August 21, 2025

Issued By: NWS Spokane, WA

Contact Information: w-otx.webmaster@noaa.gov

- This will be updated when drought conditions change significantly.
 - Please see all currently available products at <https://drought.gov/drought-information-statements>.
 - Please visit <https://www.weather.gov/otx/DroughtInformationStatement> for previous statements.
 - Please visit <https://www.drought.gov/drought-status-updates> for regional drought status updates.
-
- STATE OF WASHINGTON [DROUGHT EMERGENCY](#) FOR PARTS OF CENTRAL WASHINGTON (see link)
 - Drought persists and has expanded across the Inland Northwest
 - Extreme drought persisted and Exceptional drought developed in ID Panhandle
 - Severe drought expanded in north WA and ID Panhandle



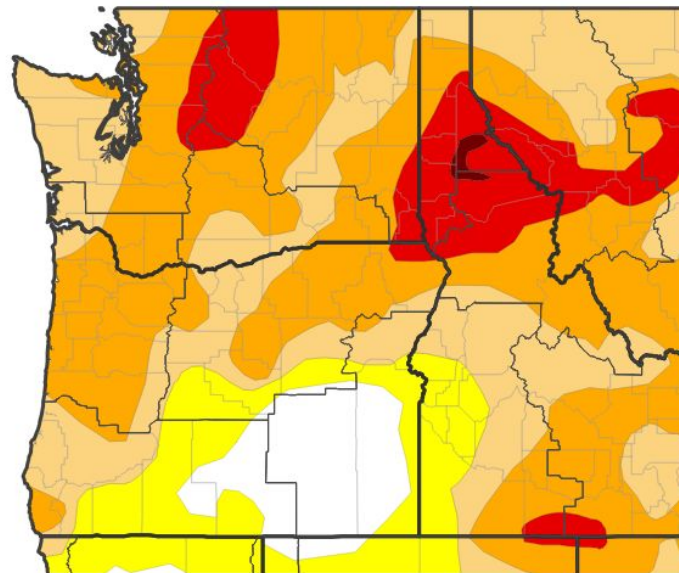


U.S. Drought Monitor

Link to the [latest U.S. Drought Monitor](#) for eastern Washington and north Idaho

U.S. Drought Monitor

- Drought intensity and Extent for the Inland NW
 - **D4 (Exceptional Drought):** Southern Idaho Panhandle ~**0.5%**
 - **D3 (Extreme Drought):** Southern Idaho Panhandle, North WA Cascades ~**12%**
 - **D2 (Severe Drought):** The northern Cascades through the northwest Oregon coast, north-central Washington and Washington Palouse ~**36%**
 - **D1 (Moderate Drought):** The Olympic Washington coast, most of eastern Washington and far northern Idaho Panhandle ~**32%**
 - **D0: (Abnormally Dry):** Southern Washington, Washington/Oregon Columbia Gorge ~ **16%**
 - **NONE: ~4%**



U.S. Drought Monitor



Source(s): NDMC, NOAA, USDA; image courtesy of Drought.gov

Data Valid: 08/19/25



National Oceanic and
Atmospheric Administration
U.S. Department of Commerce

National Weather Service
Spokane, WA

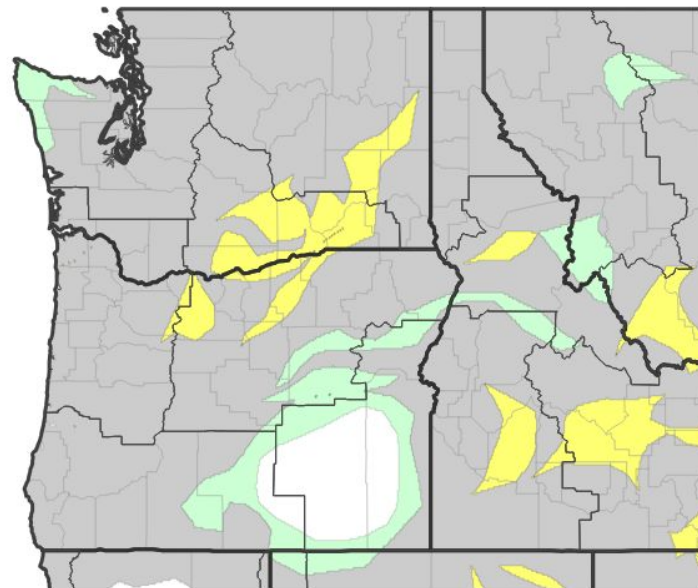


Recent Change in Drought Intensity

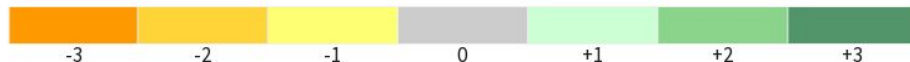
Link to the latest 1 week [change map](#) for eastern Washington and north Idaho

- One Week Drought Monitor Class Change
 - No Change: much of WA and north Idaho
 - Moderate drought → Severe drought: Portions of southeast Washington and Spokane area

U.S. Drought Monitor 1-Week Change Map



Drought Change Since Last Week



Source(s): NDMC, NOAA, USDA; image courtesy of Drought.gov

Data Valid: 08/19/25



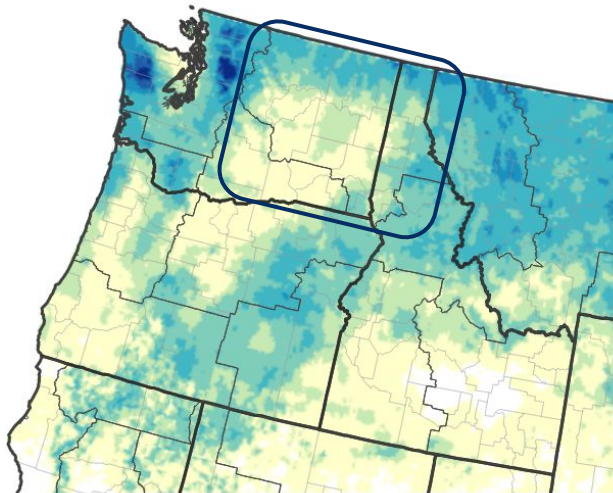


Precipitation

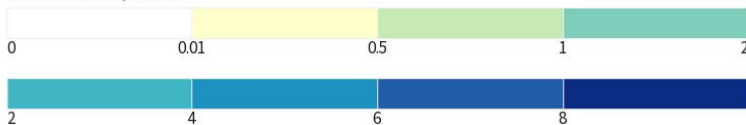
Last 30 Days

Precipitation over the last 30 days has been near or above normal for large portions of Washington and parts of the Idaho Panhandle, while the accumulations have been below half an inch in total for many low elevation areas.

NWPS 30-Day Precipitation Accumulations (inches)



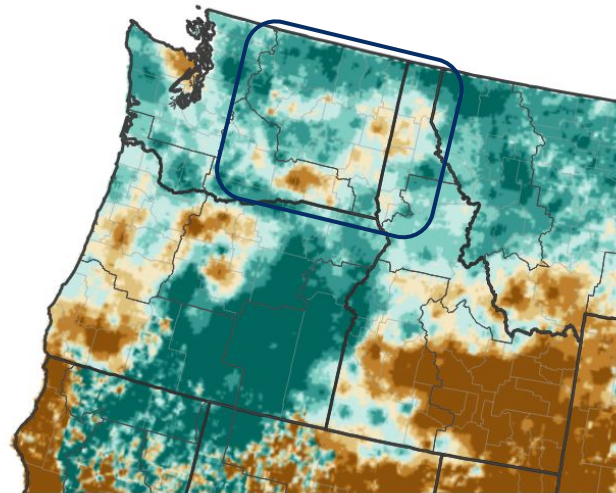
Inches of Precipitation



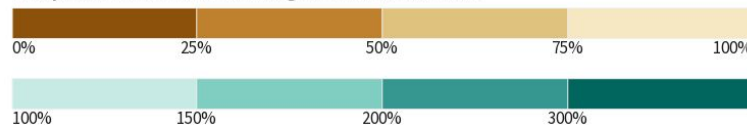
Source(s): National Weather Service National Water Prediction Service;
image courtesy of Drought.gov

Data Valid: 08/19/25

30-Day Precipitation: Percent of PRISM Normal



Precipitation Shown as a Percentage of Normal Conditions



Source(s): National Weather Service National Water Prediction Service;
image courtesy of Drought.gov

Data Valid: 08/20/25



National Oceanic and
Atmospheric Administration

U.S. Department of Commerce

National Weather Service
Spokane, WA



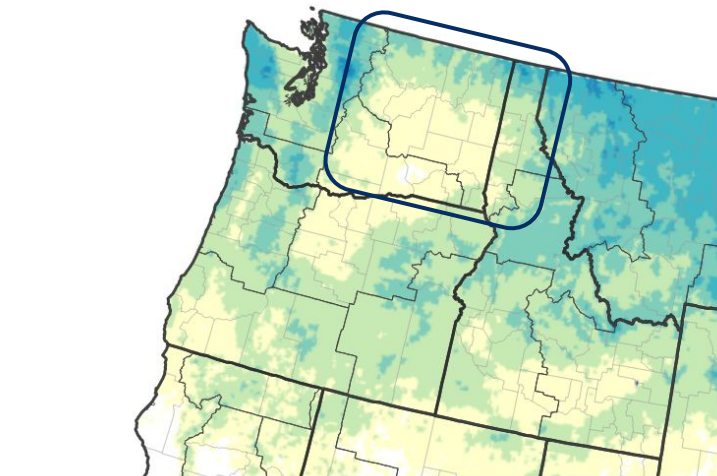
Precipitation

Last 90 Days

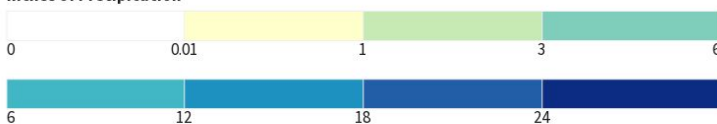
Precipitation over the last 90 days has been largely much below normal.

Long term dryness remains across central WA, higher elevations of the Idaho Panhandle, and southeast WA.

NWPS 90-Day Precipitation Accumulations (inches)



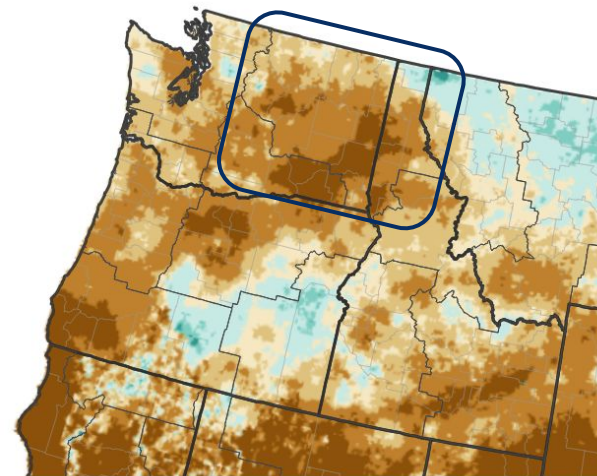
Inches of Precipitation



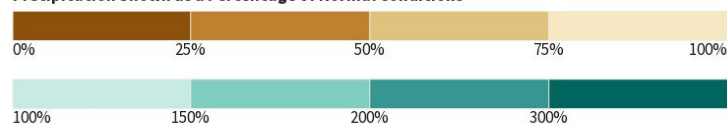
Source(s): National Weather Service National Water Prediction Service; image courtesy of Drought.gov

Data Valid: 08/19/25

90-Day Precipitation: Percent of PRISM Normal



Precipitation Shown as a Percentage of Normal Conditions



Source(s): National Weather Service National Water Prediction Service; image courtesy of Drought.gov

Data Valid: 08/20/25



National Oceanic and
Atmospheric Administration
U.S. Department of Commerce

National Weather Service
Spokane, WA

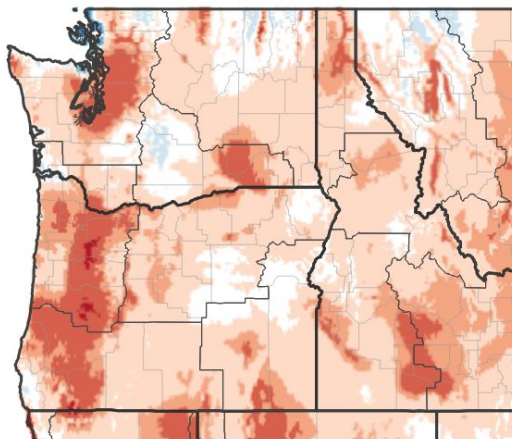


Temperature

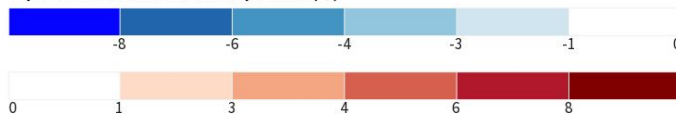
Last 7 Days and 30 Days

Temperatures the last week have been near to slightly above normal. Over the last 30 days, temperatures have been slightly below normal to near normal.

7-Day Temperature Anomaly



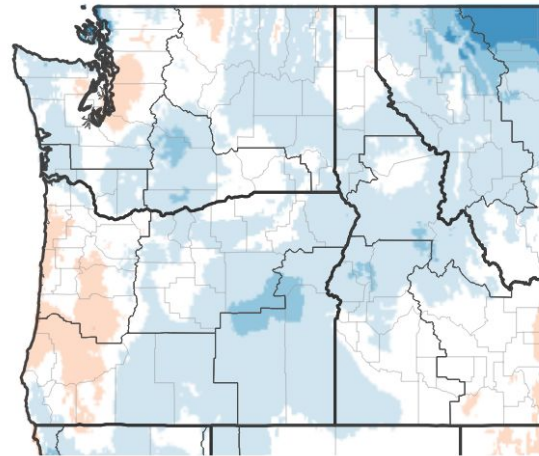
Departure from Normal Max Temperature (°F)



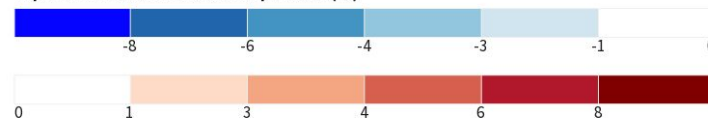
Source(s): NOAA's National Centers for Environmental Information; image courtesy of Drought.gov

Data Valid: 08/17/25

30-Day Temperature Anomaly



Departure from Normal Max Temperature (°F)



Source(s): NOAA's National Centers for Environmental Information; image courtesy of Drought.gov

Data Valid: 08/17/25



National Oceanic and
Atmospheric Administration
U.S. Department of Commerce

National Weather Service
Spokane, WA



Summary of Impacts

Links: See/submit [Condition Monitoring Observer Reports \(CMOR\)](#) and view the [Drought Impacts Reporter](#)

Hydrologic Impacts

- Water supply outlook remains below normal. ([NWS NWRFC](#))
- Stream flows remain much below normal across the region as Summer thunderstorm precipitation has been isolated to scattered. ([NWS NWRFC](#))

Agricultural Impacts

- Soil moisture is moderately to severely dry and harvesting is earlier than normal across Washington. Crop conditions are very poor to fair (67%). [USDA Crop Progress Reports](#)

Fire Hazard Impacts

- Fuel conditions remain below normal (dry) at this time. The significant wildland fire potential continues highlighting above normal risk for the Inland Northwest through September. ([NIFC](#))

Other Impacts

- Washington State Declared [Drought Emergency](#) for Chelan, Okanogan, and portions of Ferry County in June.

Mitigation Actions

- Please refer to your local municipality and/or water provider for mitigation information.

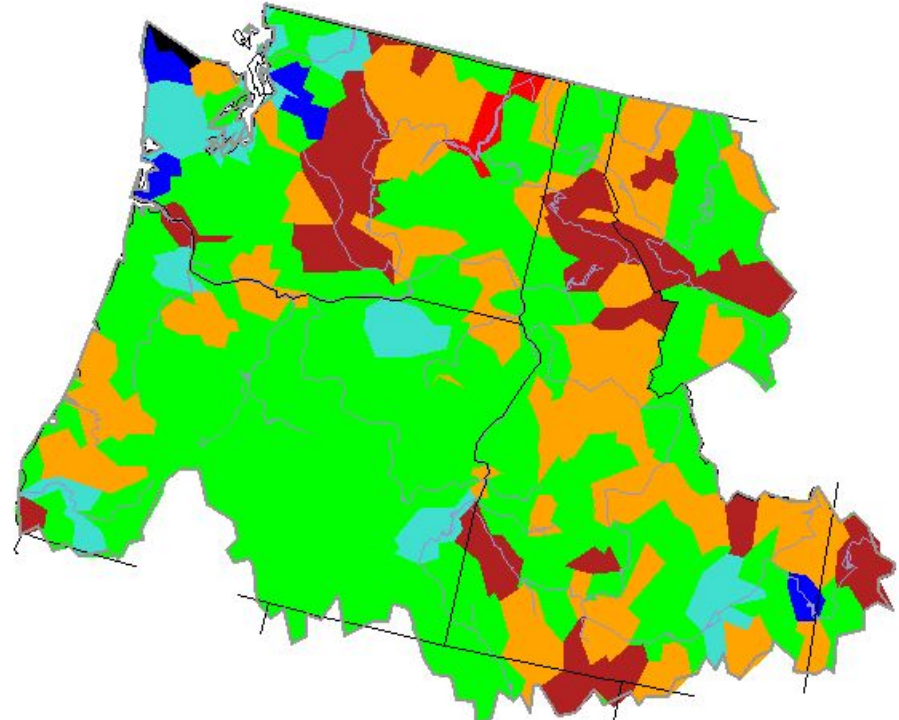




Hydrologic Conditions and Impacts

Tuesday, August 19, 2025

- Streamflows over the past 7 days have been below normal across the Okanogan Valley and Highlands and north-central Washington. Areas across the Idaho Panhandle have seen much below normal streamflows. The Cascades region streamflows are much below normal as well.



Explanation - Percentile classes							
Low	<10	10-24	25-75	76-90	>90	High	No Data
	Much below normal	Below normal	Normal	Above normal	Much above normal		

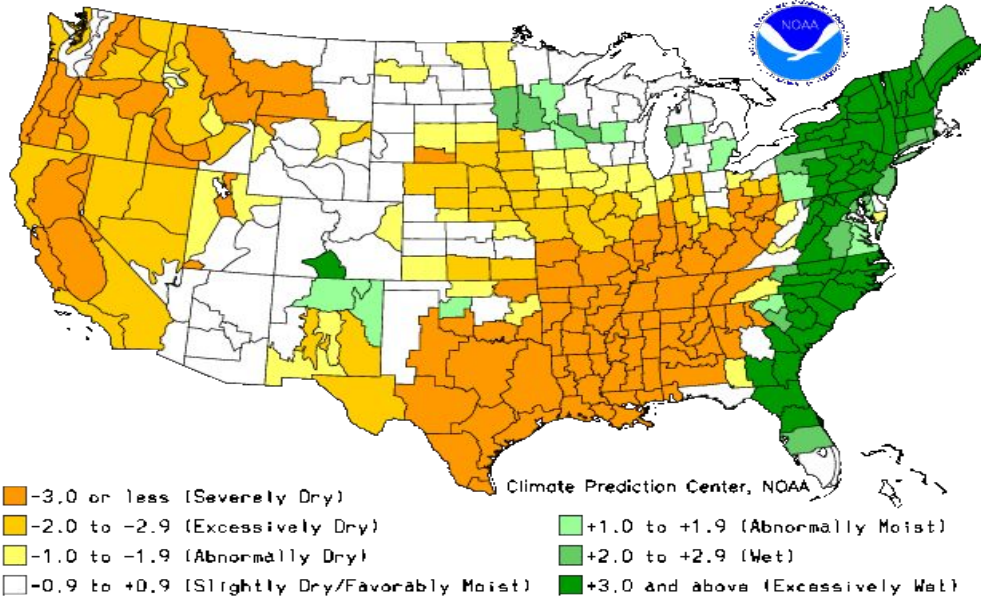
Image Caption: [USGS 7 day average streamflow HUC map](#) valid August 19, 2025





Agricultural Conditions and Impacts

Crop Moisture Index by Division
Weekly Value for Period Ending OCT 26, 2024
Short Term Need vs. Available Water in a Shallow Soil Profile



- Soil moisture remains drier than normal across much of the Inland NW, especially over the Cascades, eastern Washington, and the Idaho Panhandle.
- Winter Wheat harvesting in Idaho is up 3% this week compared to this week last year, and in Washington is down 4% compared to this week last year.
- Spring Wheat harvesting in Idaho is up 23% and in Washington is up 4%, compared to this week last year.
- Pasture and Rangeland conditions in Washington were Very Poor to Poor (43%) and Very Poor to Fair (67%) in Idaho over the past 7 days.

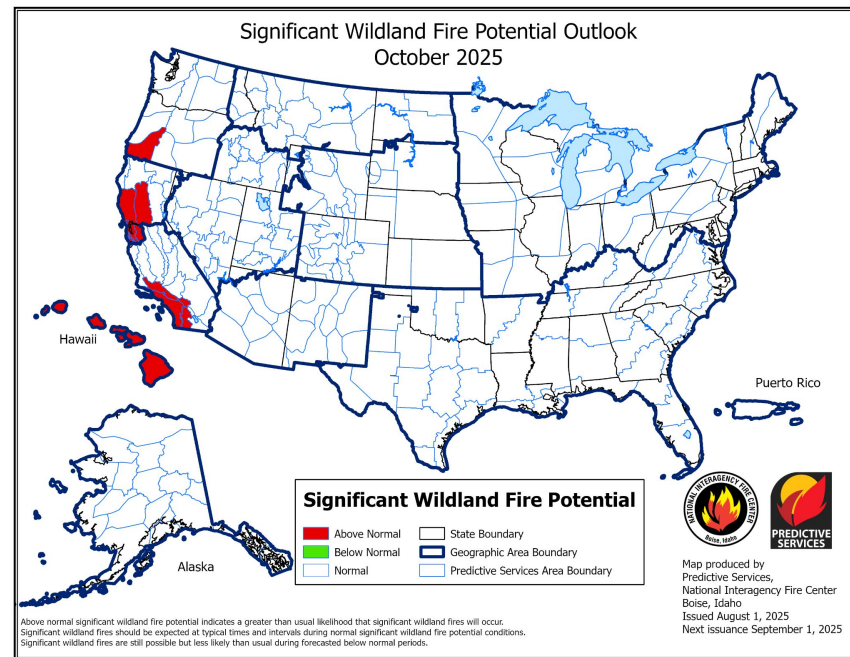
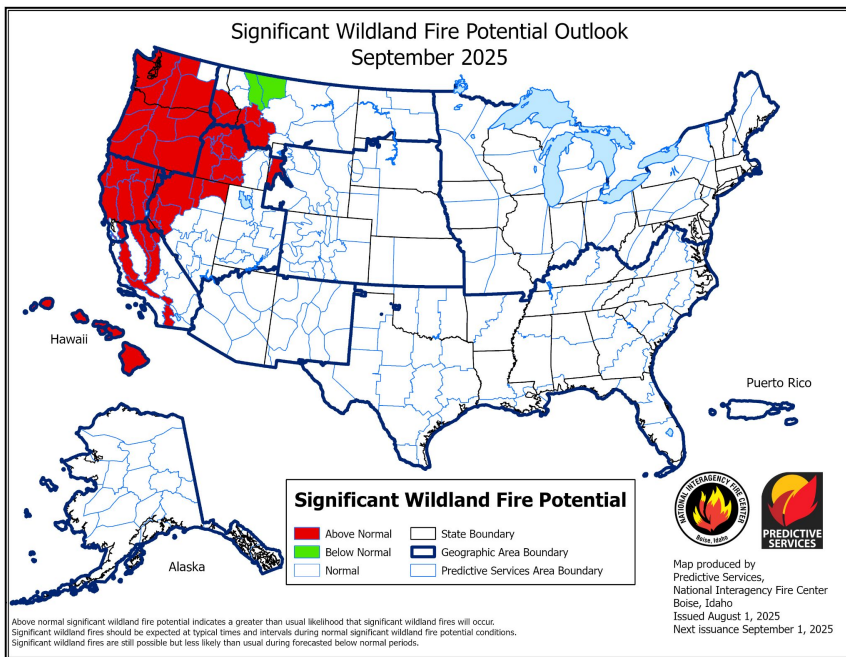




Fire Hazard Impacts

Link to [Wildfire Potential Outlooks from the National Interagency Coordination Center](#).

- Fuels remain dry at this time with some locations seeing near normal fuel moisture conditions for mid to late August.
- The significant wildland fire potential continues highlighting above normal risk for the Inland Northwest through September.

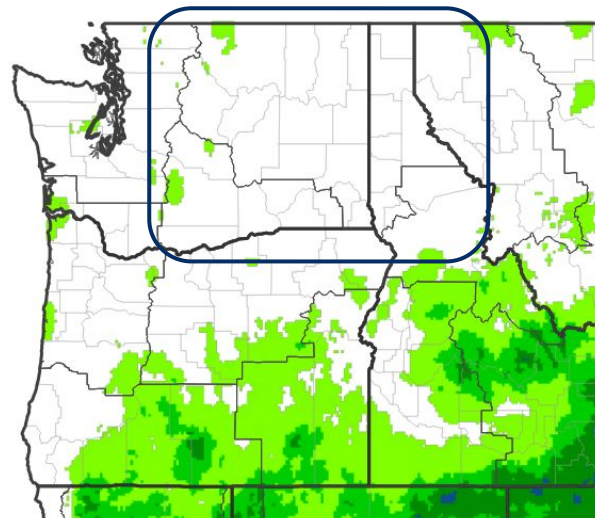




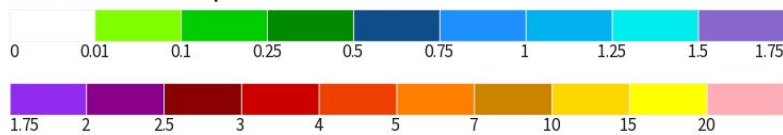
Seven Day Precipitation Forecast

- Little to no precipitation forecast for the Pacific NW for the next week.
- The 8-14 day outlook favors conditions-
 - 50-60% of **above normal temperatures**.
 - 40-60% of **above normal precipitation**.

7-Day Quantitative Precipitation Forecast for August 20, 2025–August 27, 2025



Predicted Inches of Precipitation



Source(s): National Weather Service Weather Prediction Center; image courtesy of Drought.gov

Last Updated: 08/20/25





September Outlook

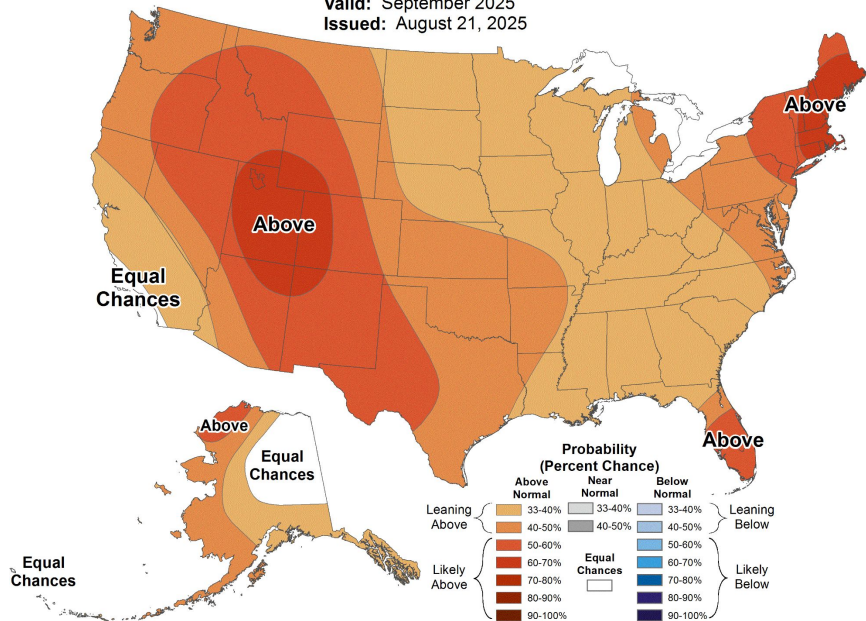
The latest monthly and seasonal outlooks can be found on the [CPC homepage](#)

September: Outlook favors warmer than normal temperatures. The precipitation outlook across the Inland NW favors equal chances for above or below normal precipitation for September.



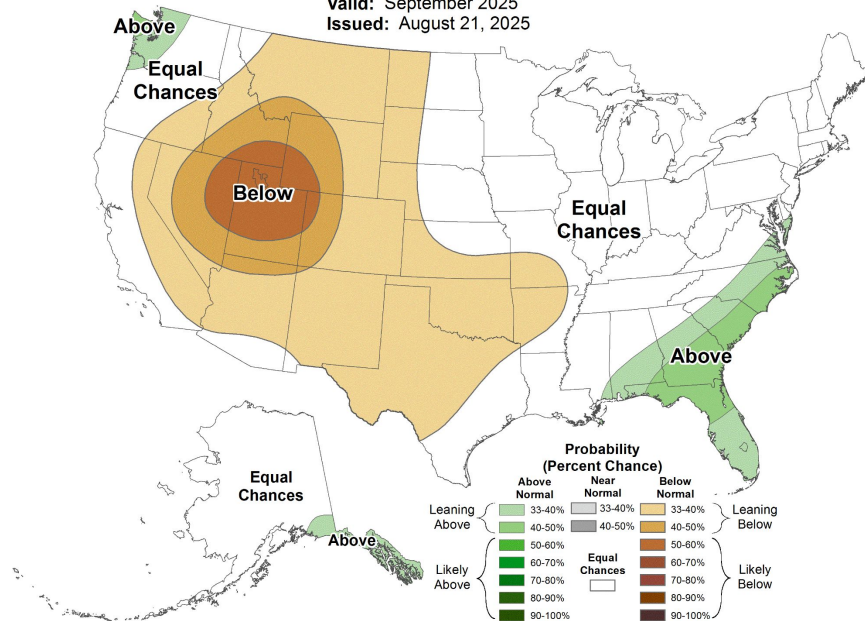
Monthly Temperature Outlook

Valid: September 2025
Issued: August 21, 2025



Monthly Precipitation Outlook

Valid: September 2025
Issued: August 21, 2025



National Oceanic and
Atmospheric Administration

U.S. Department of Commerce

National Weather Service
Spokane, WA



Seasonal Outlook

The latest monthly and seasonal outlooks can be found on the [CPC homepage](#)

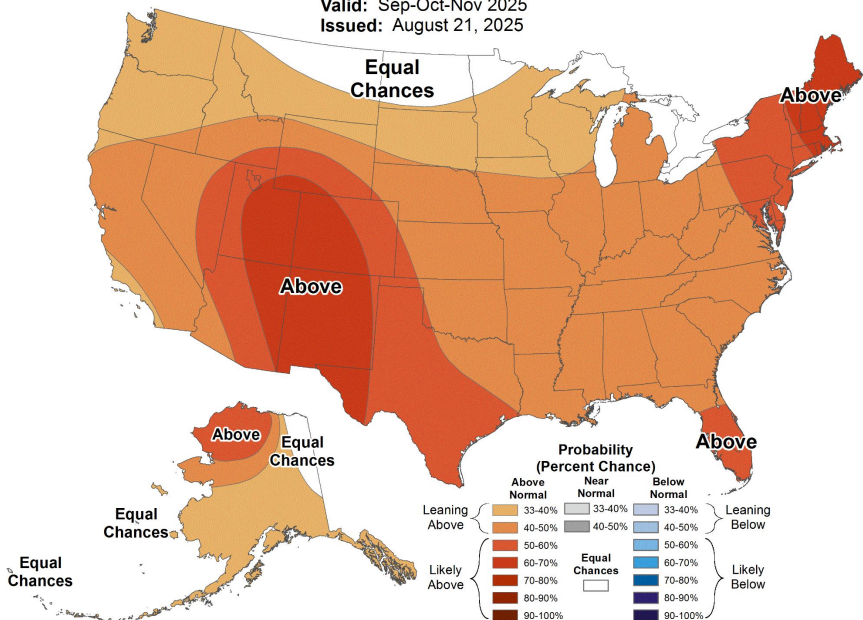
September, October, November: Outlook favors warmer than normal temperatures. The precipitation outlook across much of the Inland NW favors equal chances for above or below normal precipitation for Sep-Oct-Nov. There is a 33-40% chance of above normal precipitation near the Cascades.



Seasonal Temperature Outlook



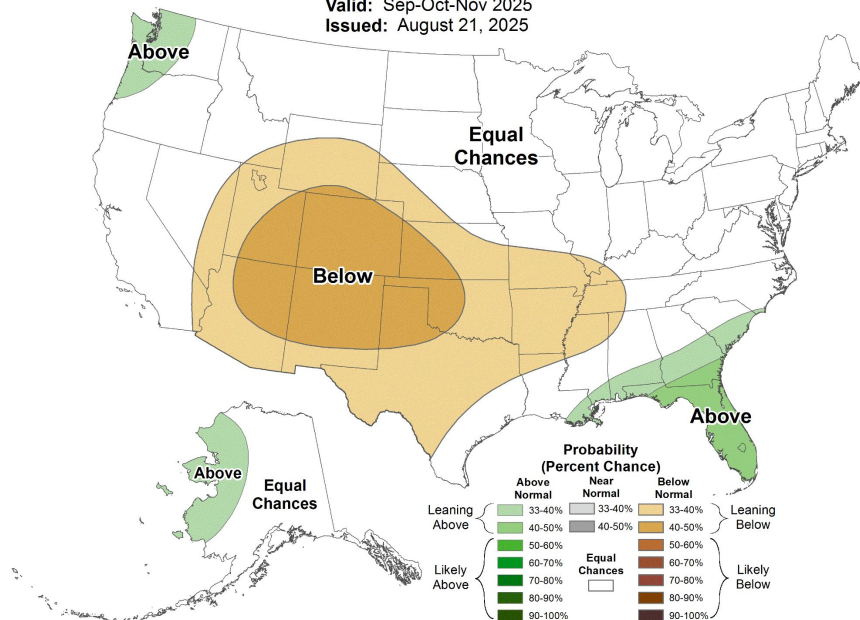
Valid: Sep-Oct-Nov 2025
Issued: August 21, 2025



Seasonal Precipitation Outlook



Valid: Sep-Oct-Nov 2025
Issued: August 21, 2025



National Oceanic and
Atmospheric Administration

U.S. Department of Commerce

National Weather Service
Spokane, WA

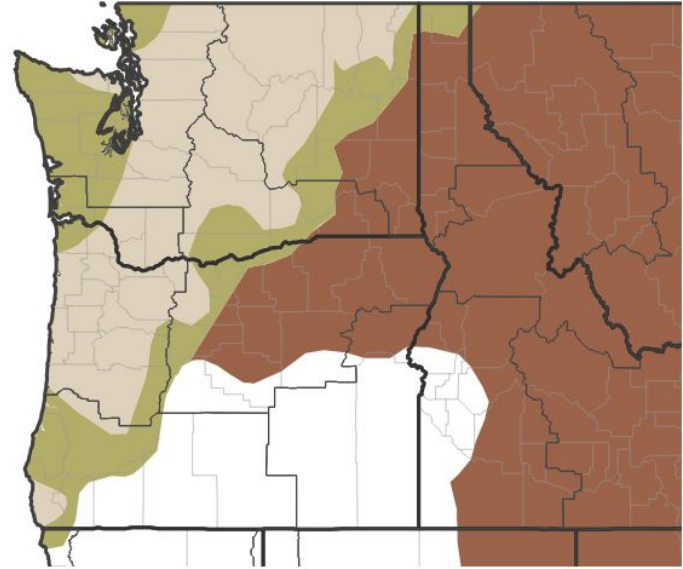


Drought Outlook

The latest monthly and seasonal outlooks can be found on the [CPC homepage](#)

- The Seasonal Drought Outlook shows where drought conditions will change over the next 3 months. Much of the drought across central and northeast Washington will improve or end. Drought in southeast Washington and much of the Idaho Panhandle will persist.

Seasonal (3-Month) Drought Outlook for August 21, 2025–November 30, 2025



Drought Is Predicted To...



Source(s): Climate Prediction Center; image courtesy of Drought.gov

Last Updated: 08/21/25

