



Activities to Improve WSR-88D Radar Rainfall Estimation in the National Weather Service

Richard Fulton

Hydrology Laboratory
Office of Hydrologic Development
National Weather Service
Silver Spring, Maryland

2nd Federal Interagency Hydrologic Modeling Conference
July 29, 2002
Las Vegas, Nevada

Outline

- Overview of operational NWS quantitative precipitation estimation (QPE) algorithms and products
- Near-term (0-2 yrs) scientific enhancements
- Long-term (3+ yrs) QPE science frontiers

Quantitative Precipitation Estimation in the National Weather Service

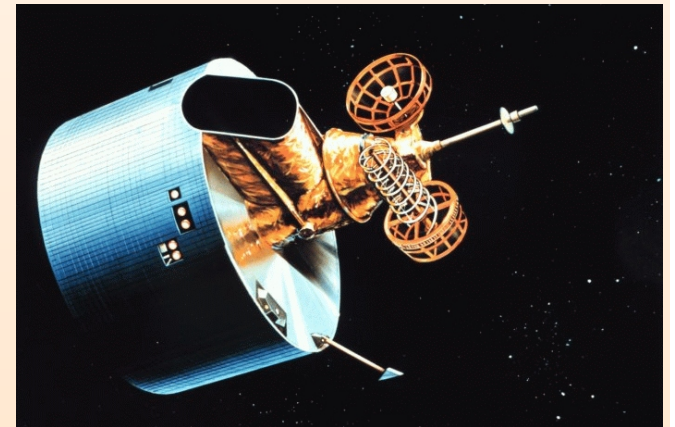
Multisensor Approach to Optimally Combine
Information from Multiple Sensors



WSR-88D Radar



Rain Gauges



Satellite

160 NWS WSR-88D Doppler Radars



UCAR/NCAR/RAP

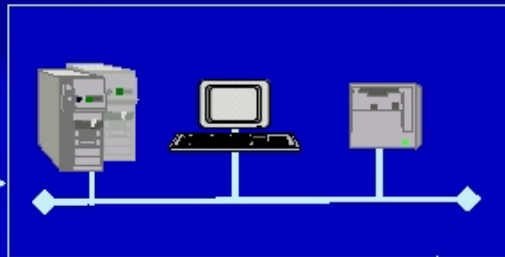
Quantitative Precipitation Estimation in the NWS

A Blend of **Automated & Interactive** Procedures

RDA: Radar Data Acquisition
(Transmit energy, receive data)



RPG: Radar Product Generator
(Scientific Processing)



AWIPS: NWS Forecast Office
(Forecaster Warnings)

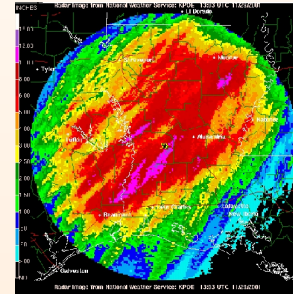


Quantitative Precipitation Estimation in the NWS

Multistep, Integrated Sequential Processing
from Local to Regional to National Levels

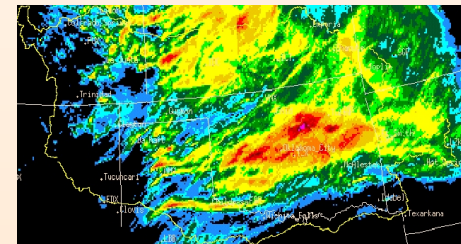
- *Local:* Weather Forecast Offices (WFO)

- ▶ Precipitation Processing System (PPS)



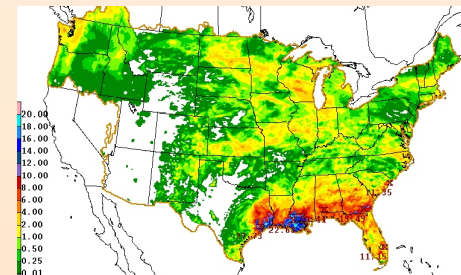
- *Regional:* River Forecast Centers (RFC)

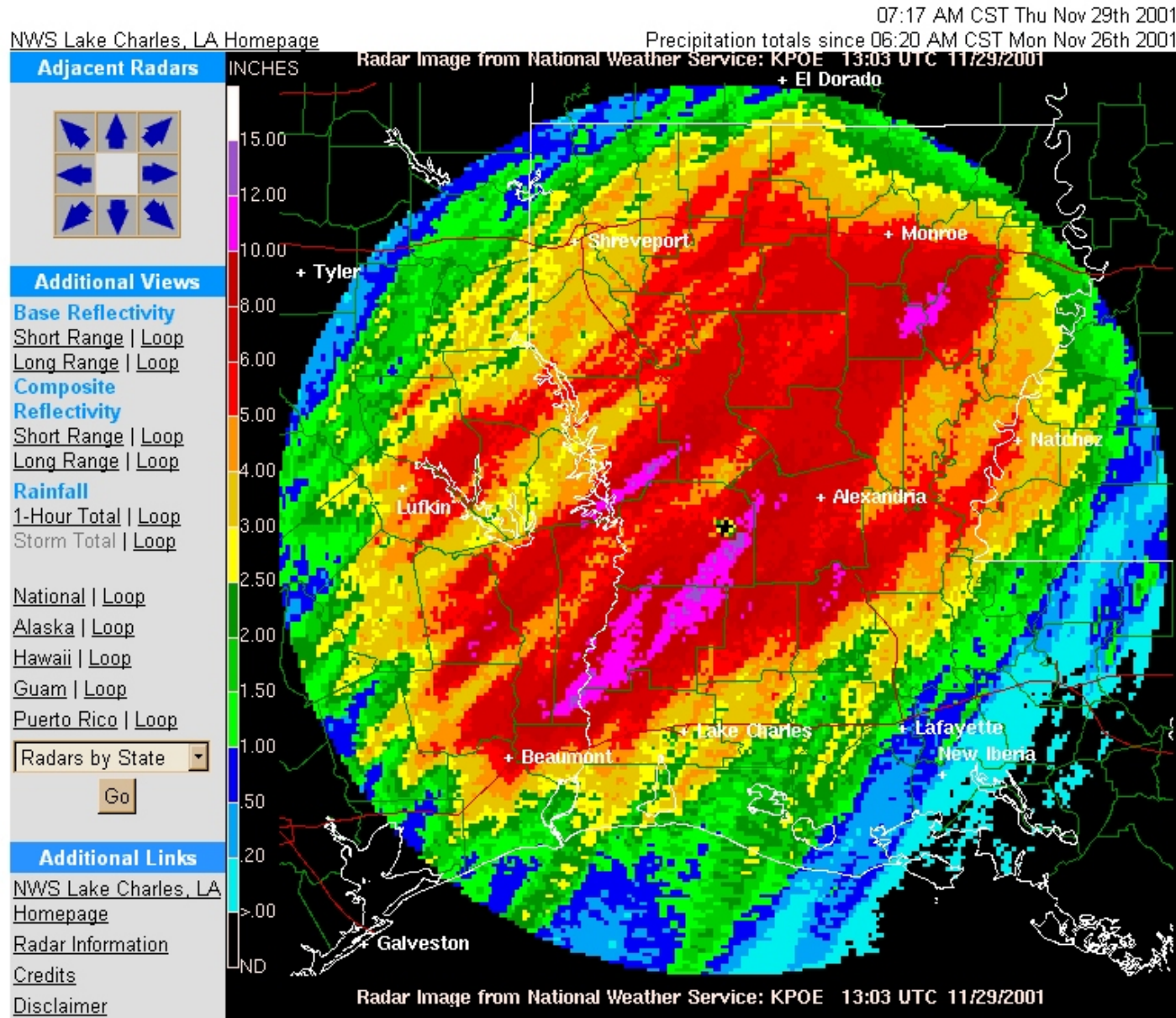
- ▶ Multisensor Precipitation Estimator (MPE)



- *National:* National Center for Environmental Prediction (NCEP)

- ▶ Stage IV Precipitation Processing





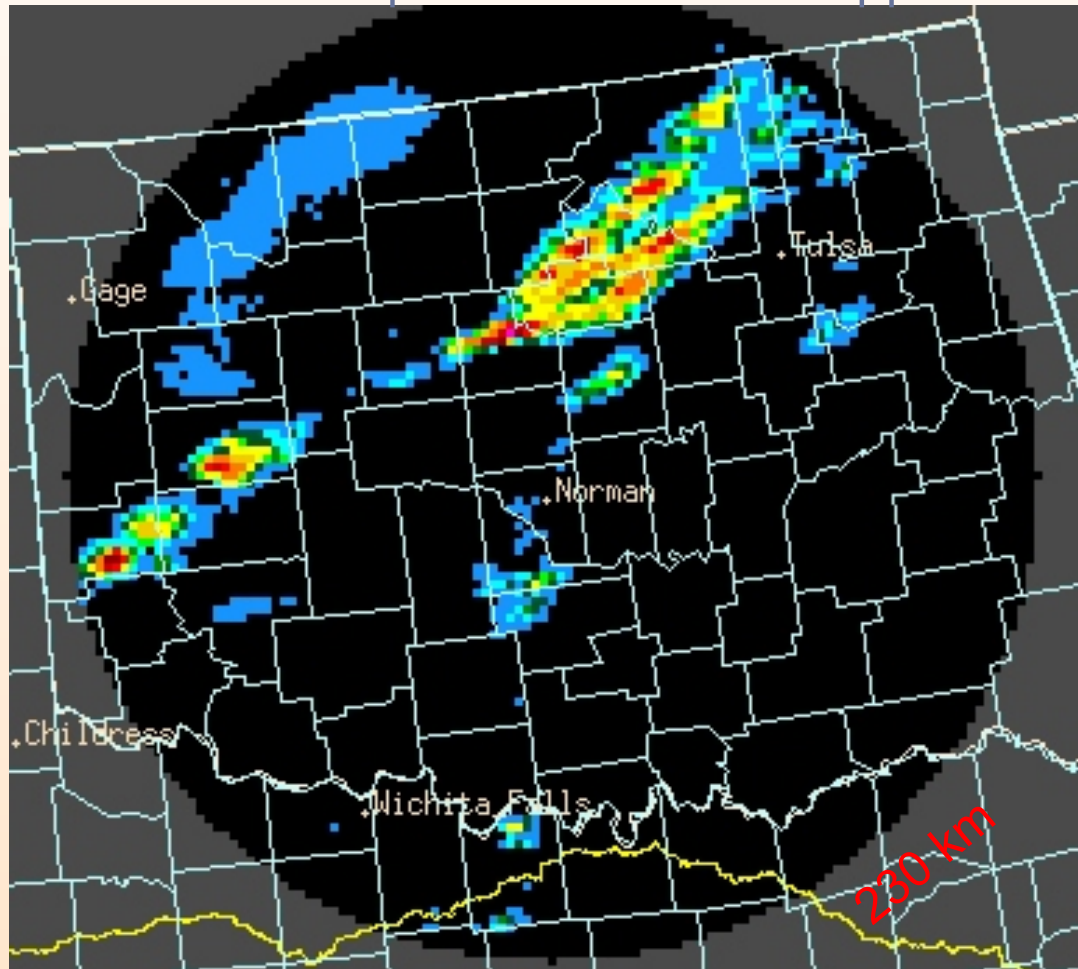
PPS generates graphical 16-level image products for each radar site

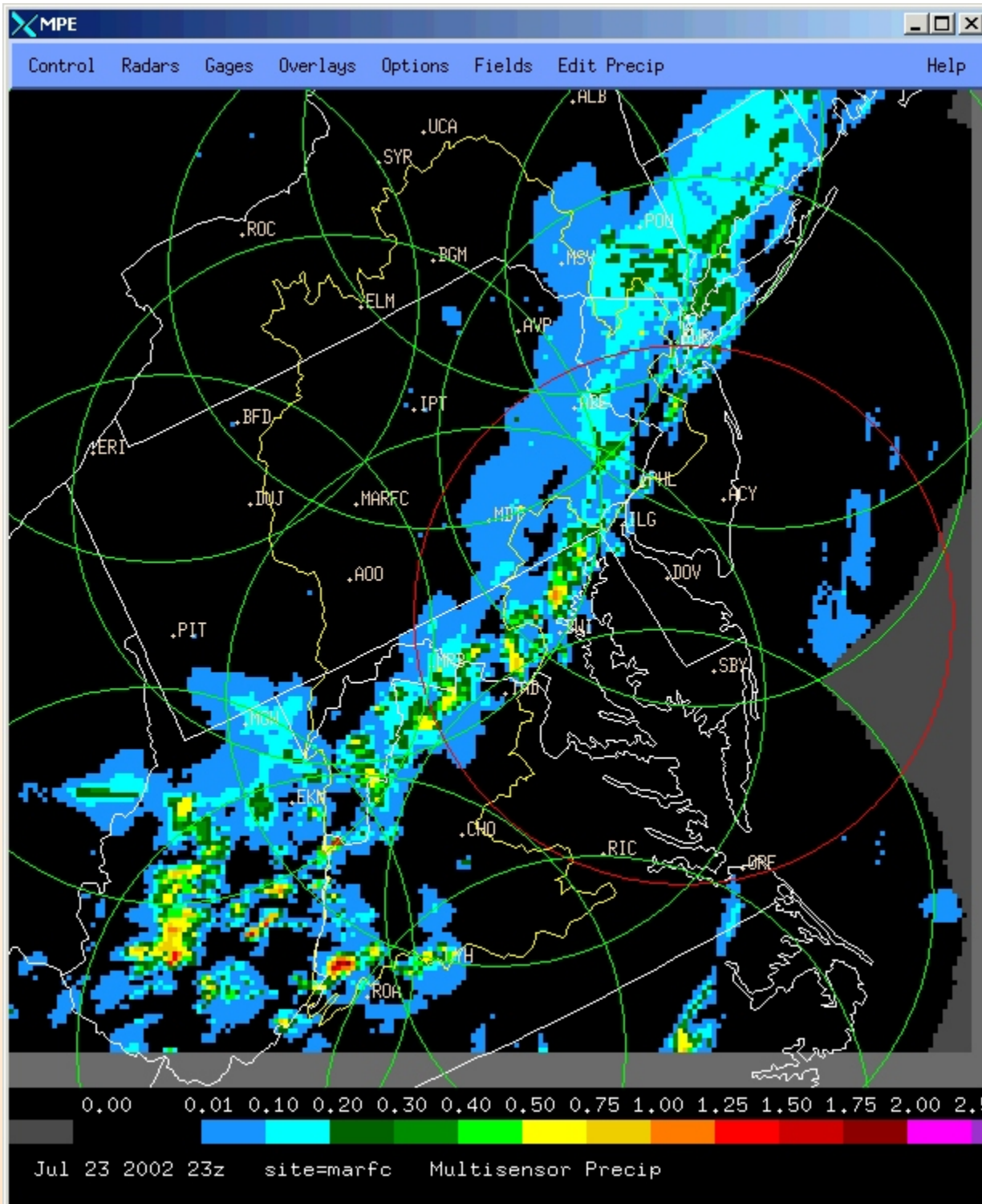
1-hr, 3-hr, storm-total, & user-defined accumulation periods

Time and date in red indicates image is at least one hour old.

PPS's Hourly Digital Precipitation Array (DPA) Product

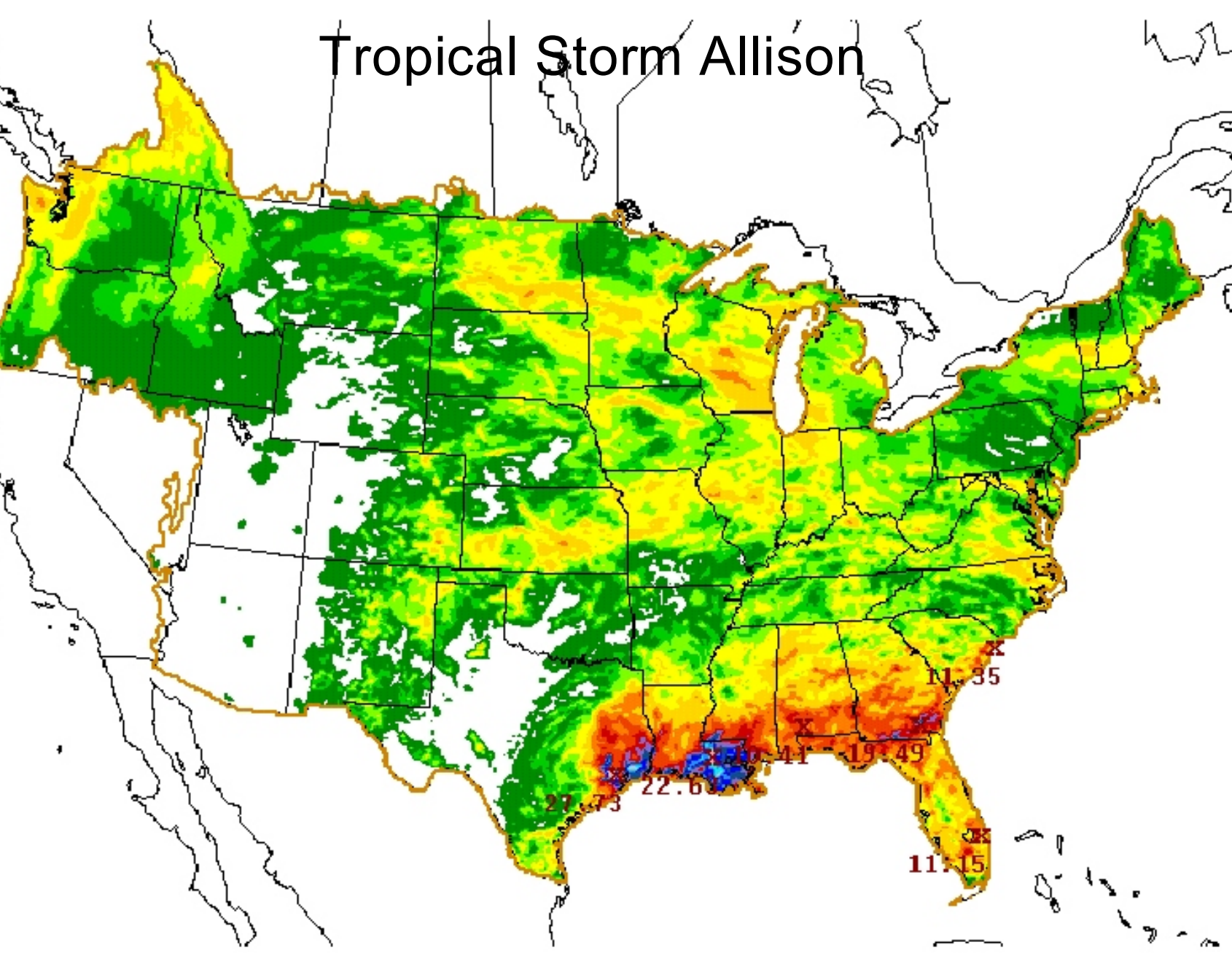
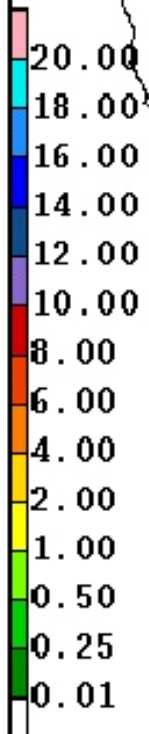
- Rectilinear 4-km national polar stereographic grid
 - 256 rainfall data levels
- Used in follow-on quantitative rainfall applications (MPE)





***Multisensor
Precipitation
Estimator
(MPE)***
**generates
one-hour
regional
radar + rain
gauge +
satellite
rainfall
accumulation
mosaics**

Tropical Storm Allison



RFC QPE from 12Z 05 June to 12Z 12 June 2001

22.73 22.60 11.11 19.49 11.35 11.15

Near-term PPS Enhancements

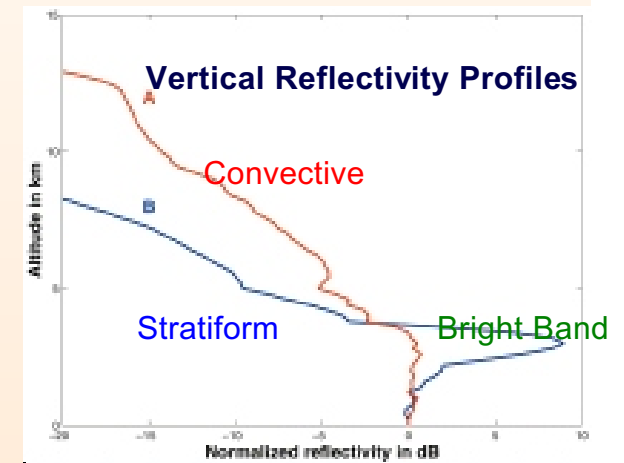
Nationwide Deployment beginning Spring 2003

- *New PPS product: Digital Storm-total Precipitation (DSP)*
 - ▶ 256-data-level, 0.01 inch resolution digital rainfall accumulation
 - ▶ Polar 2-km x 1-deg grid centered at each radar out to 230 km range
 - ▶ Generated and updated every 5 minutes
 - ▶ Differencing of consecutive products can produce accumulations of any arbitrary duration (e.g., 5-min, 30 min, 1.5-hr, 2-hr, 24-hr)
 - ▶ Available for use in hydrology applications outside of the WSR-88D to enhance flash flood services
 - **Flash flood monitoring and short-fuse forecast tools**
 - **Distributed hydrologic models**

Range Correction Algorithm (RCA)

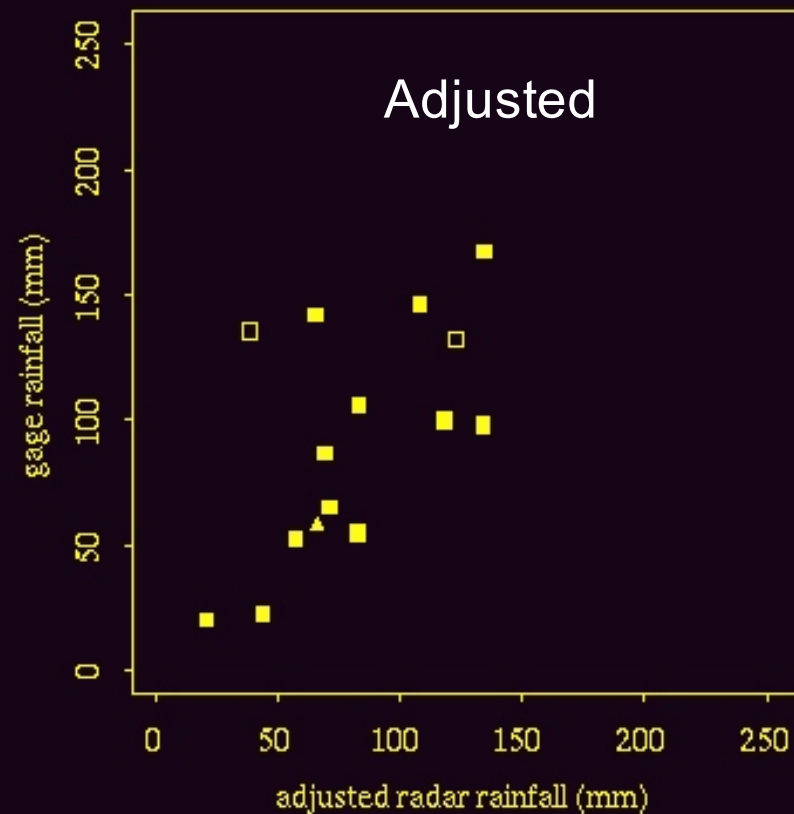
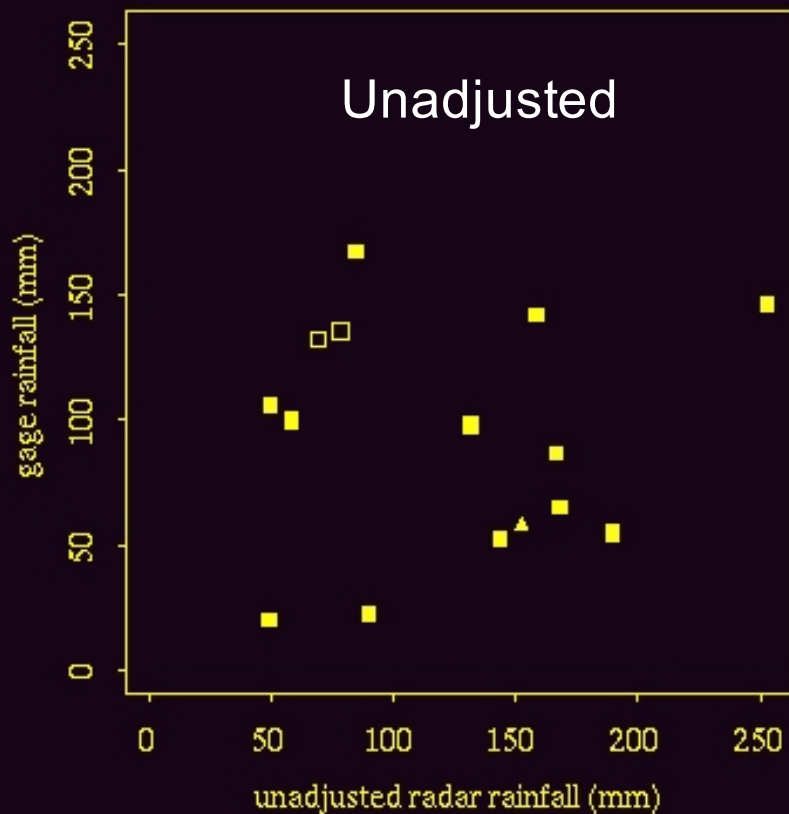
Field Deployment in Fall 2003

- One of the largest error sources for radar rainfall estimation is range-dependent bias due to vertical reflectivity gradients, including bright band
- Systematic underestimation biases...
 - ▶ Generally increase with range
 - ▶ Are greatest for stratiform rain events
 - ▶ Are greatest in cool seasons
 - ▶ Are greatest in northern latitudes
 - ▶ Are small for summer convection
- RCA will generate range- & elevation-dependent rainrate correction factors updated every 5 minutes and used to adjust PPS rainfall products



RCA produces rainfall estimates that better match rain gauge observations

Storm-total gauge-radar rainfall scatter plot



Seattle, WA WSR-88D Feb. 6-8, 1996

Multisensor Precipitation Estimator (MPE) Enhancements

- Incorporate satellite QPEs into MPE
 - ▶ Using optimal estimation, regression, or neural network multisensor merging techniques
- Deliver MPE to Weather Forecast Offices and enhance it to serve their flash flood monitoring needs
 - ▶ First version: Hourly 4-km regionally-mosaicked multisensor products (same as current RFC capability)
 - ▶ Future version: Shorter accumulation periods and update times (minutes) and higher spatial resolution (1 km)

Major NWS QPE-related Science Frontiers For Next 5-10 Years

- Probabilistic/Ensemble QPE algorithms
 - ▶ To provide uncertainty information to aid water managers in cost-benefit decision making
- Polarimetric QPE algorithms
 - ▶ Future dual-polarized NWS radars (~2007) will provide improved rainfall estimates
- Use of other observed meteorological data (soundings, surface observations, lightning) and atmospheric model analysis fields to improve QPE analyses (e.g., rain vs snow, freezing level ident.)
- Snowfall estimation algorithms (depth and liquid water equivalent)
- Higher spatial and temporal resolution QPE products to better support the NWS flash flood warning program