

J-3. adbpbg.pl

1.0 General Information

The adbpbg.pl application is new in ob7.2. It is a perl script that emulates the Informix ISQL forms feature for the Postgres RDBMS. Any user can run this application.

1.1 Enhancements/Bug Fixes/Changes

Build OB7.2

This application is new to this build and replaces an Informix feature that does not exist as a standard feature of the Postgres RDMS.

Known Limitation: the user cannot use wildcards when using the Query Button (i.e. the criteria the user has specified in one or more fields of the table cannot contain wildcards at this time).

2.0 Configuration Files

There is one file used by this perl script that helps define the proper environment variables need by this application. The file is called perl_env.pm and is located in /rfc_arc/lib.

3.0 User How-To

The user can access this database utility through *arcmenu --> Other Viewing/Extraction menu*, or on the command line by typing adbpbg.pl. In either case, a GUI window will pop-up on the screen (see Figure 1). The default database is set to the RFC Archive DB, but any database that resides in the Postgres RDBMS on the RAX can be accessed. The tables' names in the left-hand panel will default to the tables for the RFC Archive DB.

Before anything will display in the center panel, a table must be selected from the list in the left-hand panel. Note that the table names are preferenced by "public". Once a table is selected, the appropriate form will appear in the middle panel.

Once a form is displayed the user can pull data into this form by one of two ways:

- 1) click the "select *" button in the right-hand panel. This will retrieve all rows for this table, and the data for the first row will be displayed.

- 2) enter some information into one or more fields of the form, and then click the “Query” button. This will retrieve all rows for this table that meet the criteria the user defined. The data for the first row that matches the criteria will be displayed.

If multiple rows have been retrieved, the user can view other rows a couple different ways, these are:

- 1) use the “Next_row” and “Previous_row” buttons.
- 2) use the slider button to move to another row number, and then click the “Get Scale Value” button.

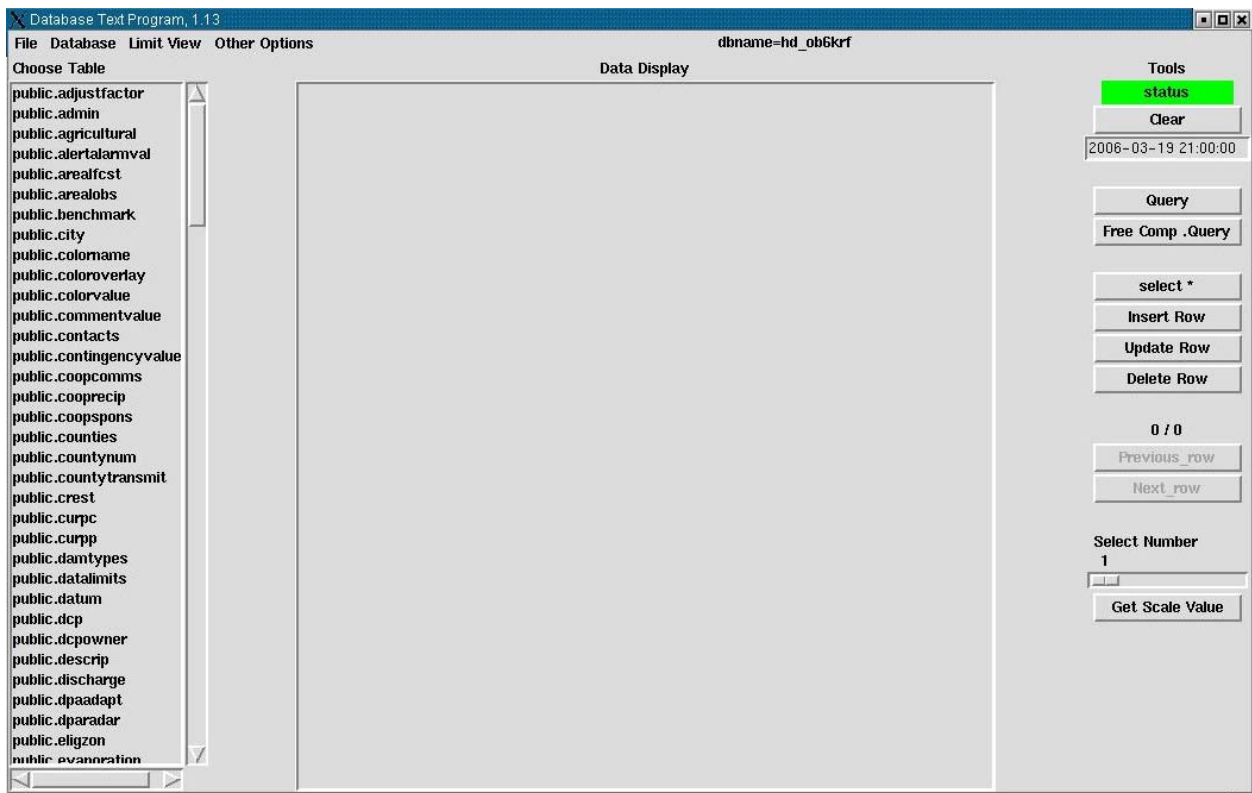


Figure 1. adbpg GUI window

Pull-Down Menus

File

To exit the database utility application, the user selects “Exit” from the File pull-down menu in the upper left-hand corner.

Database

This pull-down menu displays a list of all the databases the utility can see. The user can use this list to change to another database.

Limit View

There are two options in this pull-down menu, these are: 1) Limit to Public Tables (default) and 2) Show Views. Remember that data cannot be edited in Views, as these are not real tables.

Other Options

There are two options in this pull-down menu, these are: 1) Show Count for Tables and 2) Return is Query Button (default). What option 2 means, if the user enters some information in one of the fields of the table and then press the [Enter] key on the keyboard, the GUI will treat this as if the "Query" button had been clicked.

Tools (right-hand panel)

Status bar: Green indicates everything is O.K. Red indicates query found no rows or failed.

Clear button: clears any information that is in the form.

Date window: Displays the current date and time. User can use this to save some key-strokes, by cutting and pasting the portion of the date-time string the user would like in a date-time field in the form for a query.

Query button: Retrieves data based on the criteria specified in one or more fields of the table. If nothing is specified, a warning window pops up and tells the user no selection criteria was specified.

Free Comp. Query button: this opens a window where the user can compose complex queries and is the only way wildcards can be used. Once a query is created, the user executes it by clicking the Execute SQL button that is in the bottom middle of this window. Results will be displayed in a separate window not in the form. The free comp. Top-level window also has clear and close buttons. The clear button clears any sql from the composition window and the close button closes this window and returns the user to the main database utility window. This window also has a toggle, which is set as the default for full format output

Select * button: This button retrieves all the rows for the table that is in the middle panel.

Insert Row button: Once data is entered in the form, clicking this button will insert the data into the table if the data does not violate primary or foreign keys.

Update Row button: Once data is displayed in the form, the user can modify one or more fields and then update the row in the table by clicking on this button.

Delete Row button: Once a row of data is displayed in the form the user can click this button to delete the row from the table.

Previous Row and Next Row buttons: If multiple rows have been retrieved, these buttons can be used to move forward and backwards through the rows.

Select Number slider bar and Get Scale Value button: If multiple rows have been retrieved, the user can slide the bar to another row number and then click the Get Scale Value button to display the data in that particular row.

Up/down arrow keys and page up/page down keys: These keys on the keyboard also work like the previous row/next row buttons.

4.0 Troubleshooting Information

If for some reason the application fails, contact the RFC Support Group.