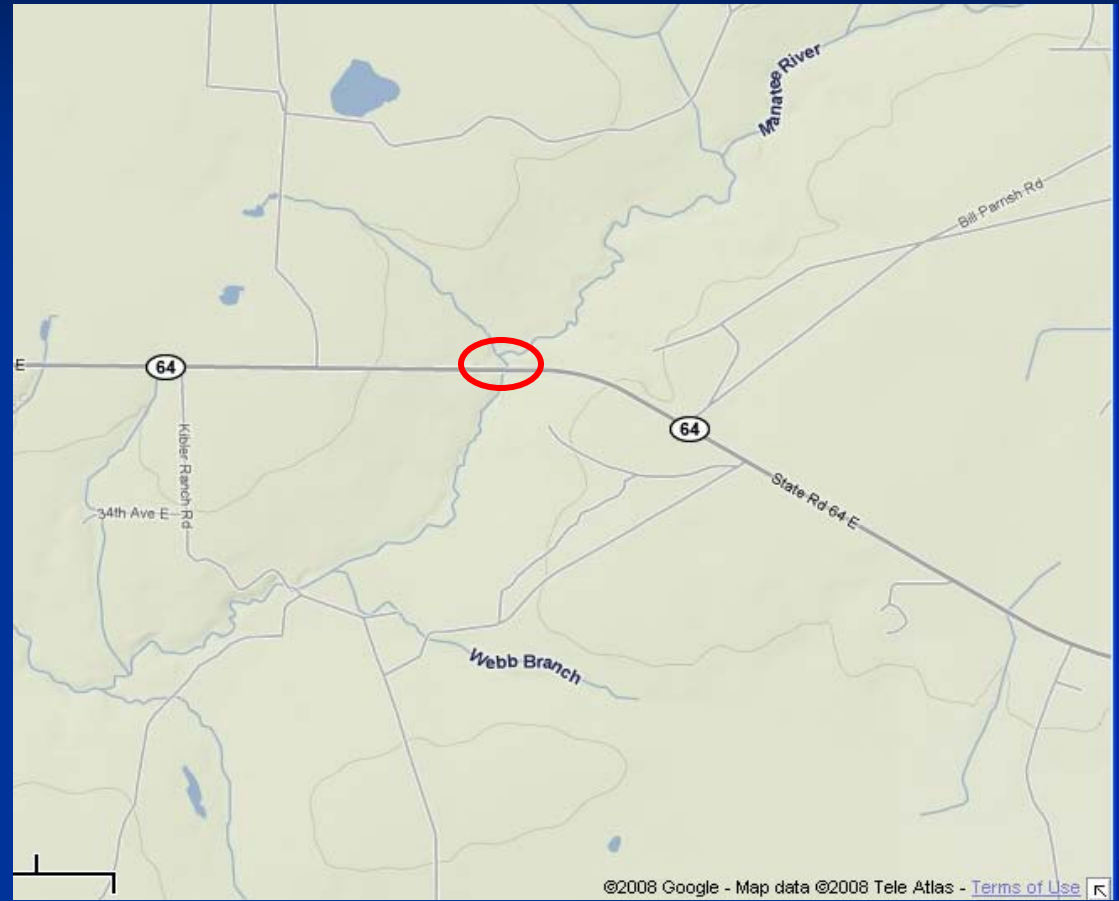
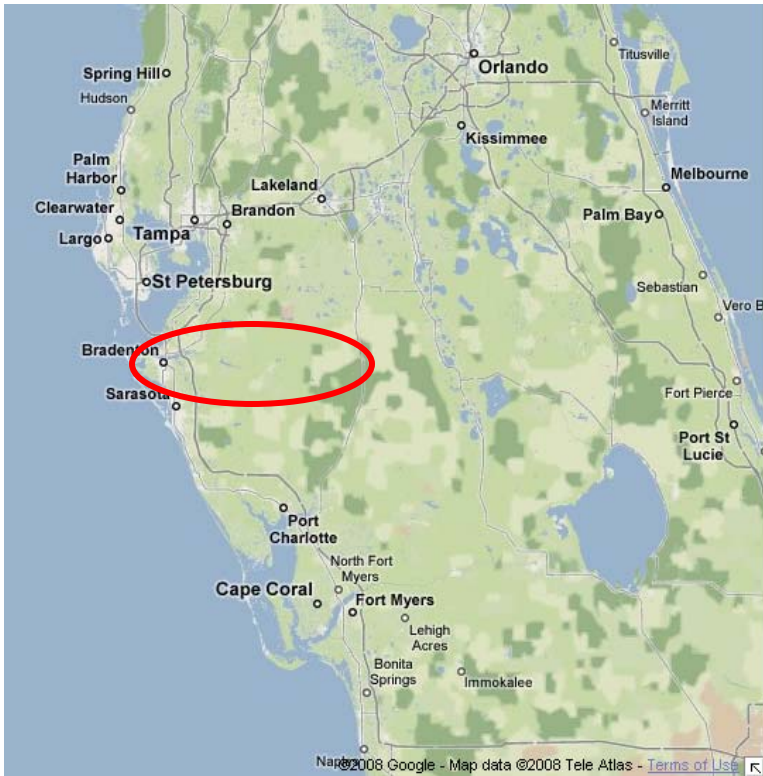


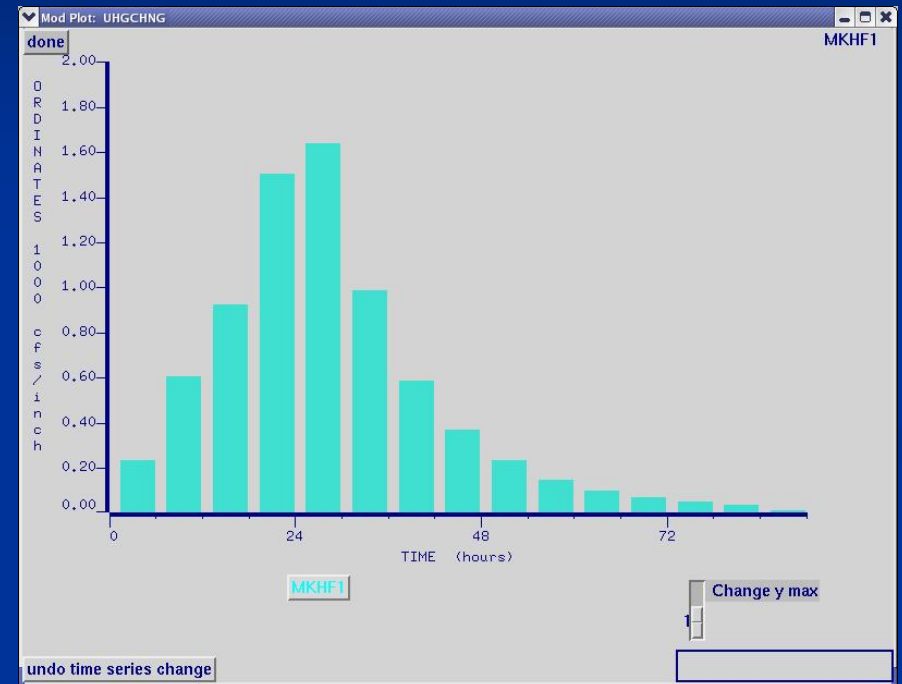
Verification of MKHF1  
(Manatee River near Myakka Head, FL)

Chris McGehee  
Southeast River Forecast Center



# Characteristics of MKHF1

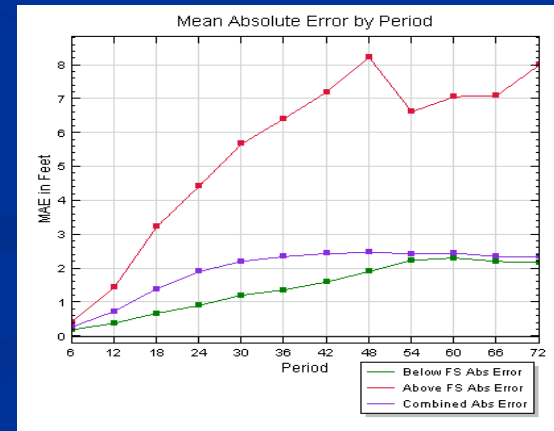
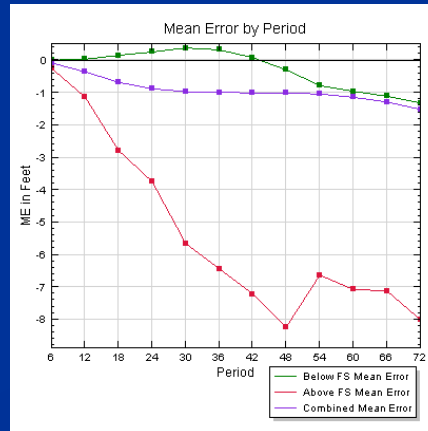
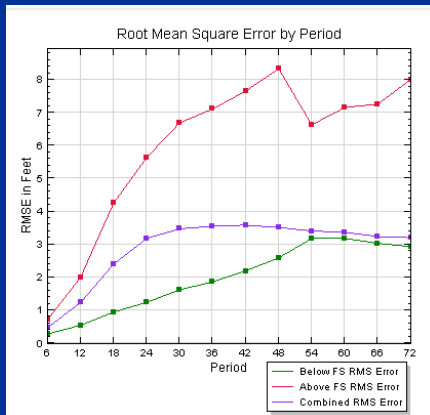
- Relatively flashy
- Flood-only location
- Generally 24-hour QPF
- Per SERFC policy, 60% of Day 2 QPF used for tropical systems
- Available data: Feb 2005 - present



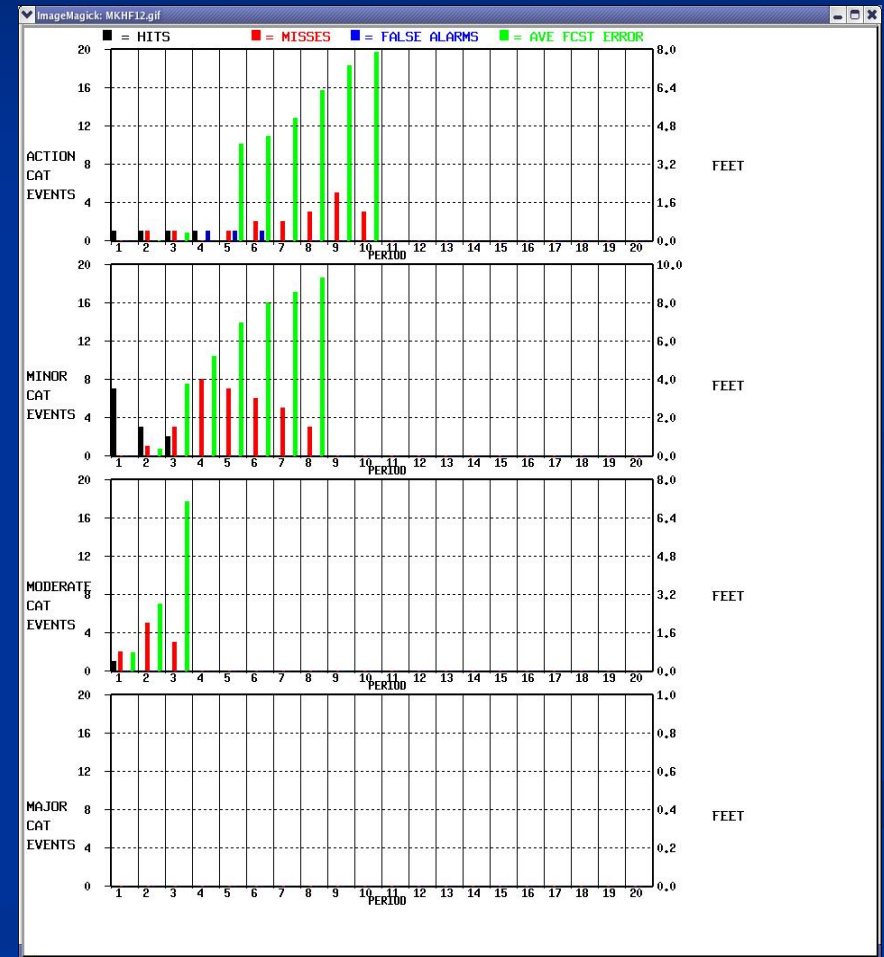
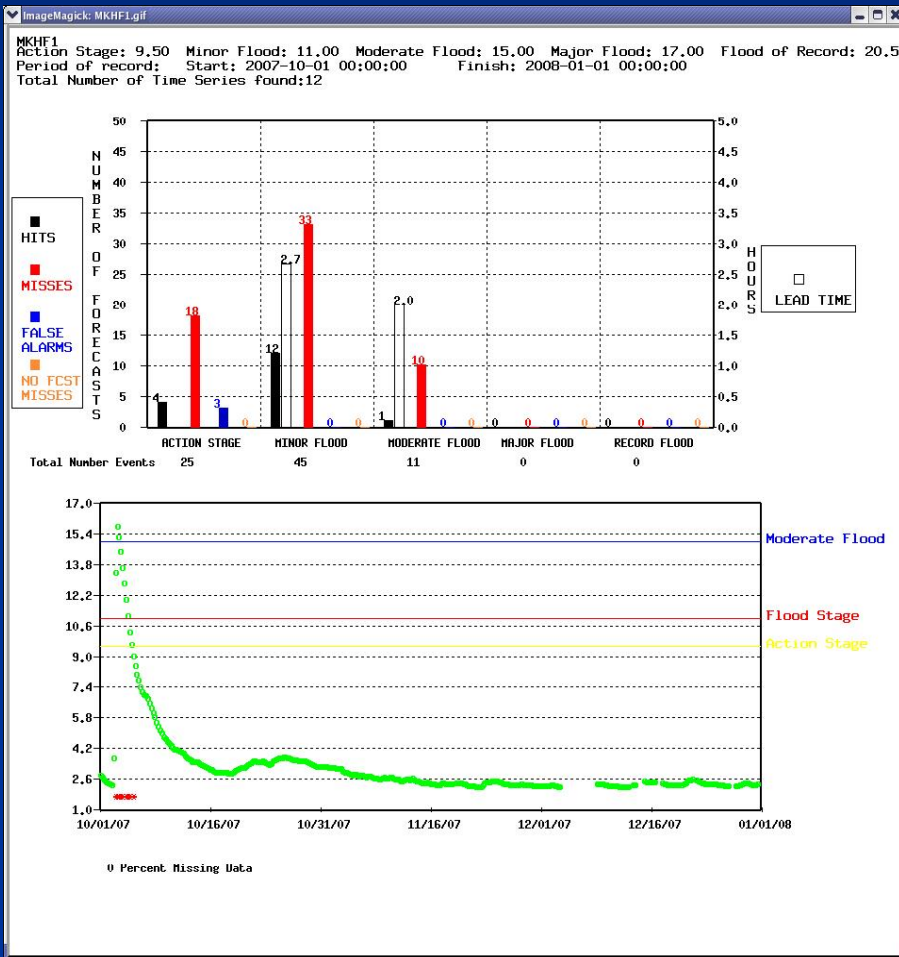
# National verification

Summary for: **MKHF1 - Manatee R at Myakka Head**

Flood Stage:	Below				Above				Combined			
Projection	RMSE	Mean Abs. Err	Mean Alg. Err	# Forecasts	RMSE	Mean Abs. Err	Mean Alg. Err	# Forecasts	RMSE	Mean Abs. Err	Mean Alg. Err	# Forecasts
6	0.285	0.198	0.012	41	0.716	0.428	-0.241	21	0.477	0.276	-0.074	62
12	0.547	0.390	0.038	44	2.000	1.441	-1.130	22	1.238	0.741	-0.352	66
18	0.950	0.681	0.159	48	4.258	3.233	-2.784	19	2.406	1.405	-0.676	67
24	1.243	0.912	0.260	48	5.639	4.437	-3.739	19	3.182	1.912	-0.874	67
30	1.626	1.216	0.385	52	6.694	5.683	-5.649	15	3.476	2.216	-0.966	67
36	1.868	1.373	0.328	54	7.116	6.429	-6.429	13	3.555	2.354	-0.983	67
42	2.198	1.607	0.085	57	7.662	7.209	-7.209	10	3.588	2.443	-1.004	67
48	2.597	1.912	-0.290	61	8.342	8.228	-8.228	6	3.517	2.477	-1.001	67
54	3.183	2.246	-0.774	64	6.633	6.627	-6.627	3	3.413	2.442	-1.036	67
60	3.184	2.313	-0.953	65	7.161	7.070	-7.070	2	3.372	2.455	-1.136	67
66	3.036	2.214	-1.103	65	7.262	7.110	-7.110	2	3.243	2.360	-1.282	67
72	2.938	2.175	-1.314	65	8.015	8.005	-8.005	2	3.208	2.349	-1.514	67
All	2.333	1.546	-0.334	664	5.361	4.037	-3.790	134	3.059	1.965	-0.914	798
Day1	0.860	0.562	0.123	181	3.596	2.301	-1.900	81	2.123	1.100	-0.502	262
Day2	2.126	1.543	0.111	224	7.285	6.597	-6.586	44	3.534	2.373	-0.988	268
Day3	3.087	2.237	-1.037	259	7.215	7.139	-7.139	9	3.310	2.402	-1.242	268



# Southern Region categorical verification

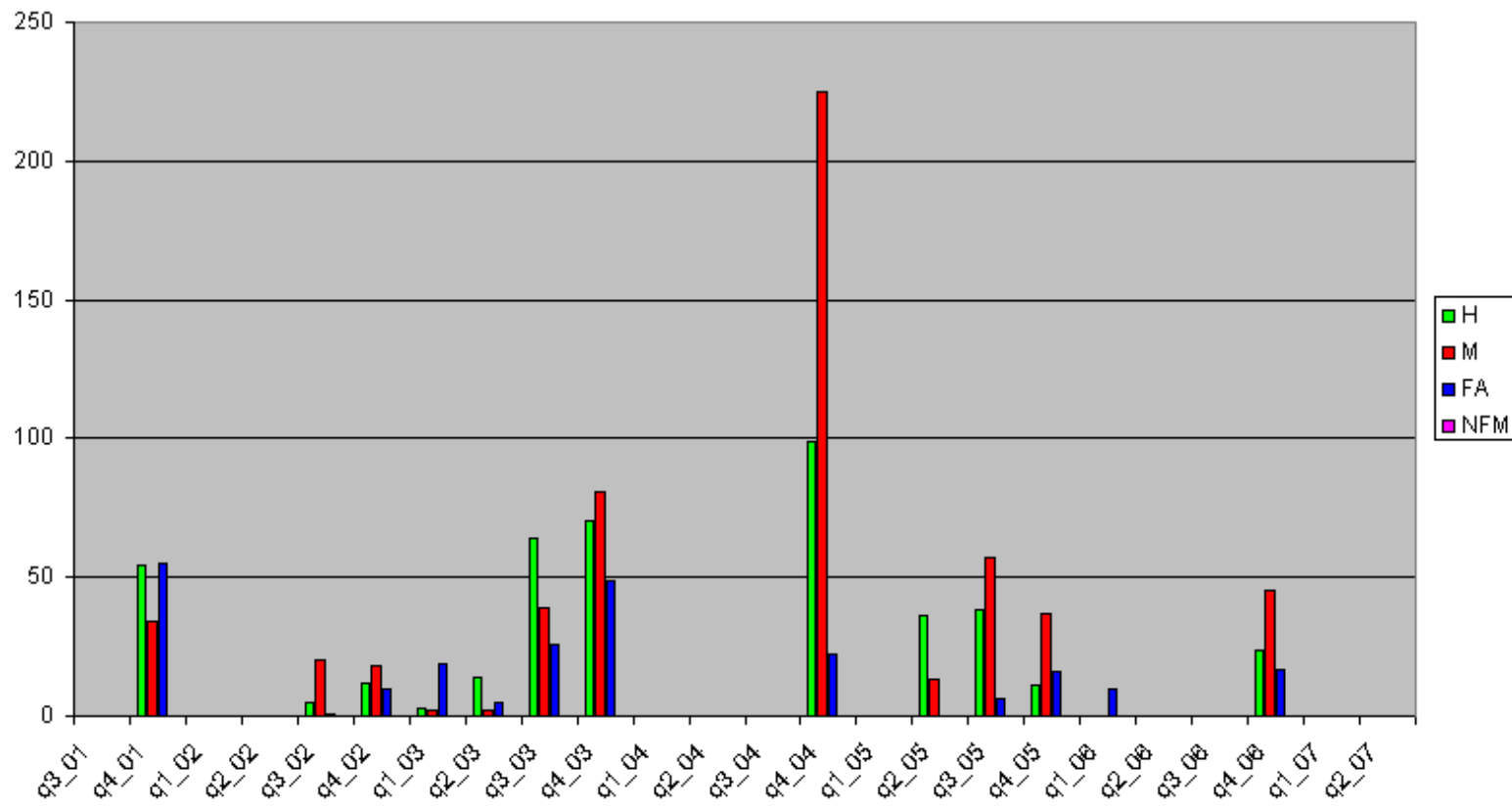


# Attempting to utilize results

## MKHF1

### Minor Flood Verification

H=Hits, M=Misses, FA=False Alarms, NFM='No Fcst' Misses

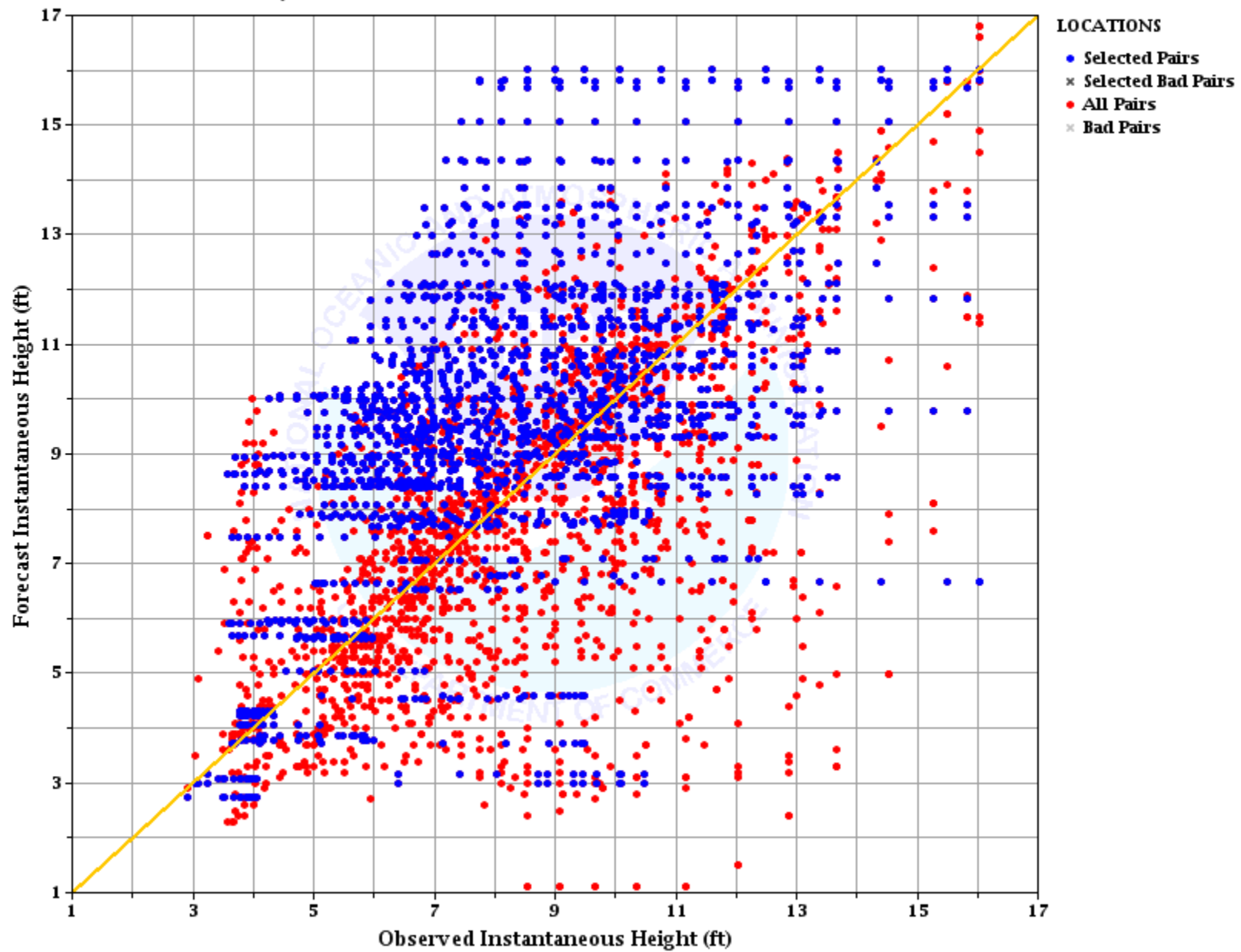


Plot of Forecast-Observed Instantaneous Height Data Pairs for SERFC

Time Period: 2005-01-01 00:00:00 GMT - 2008-10-01 00:00:00 GMT

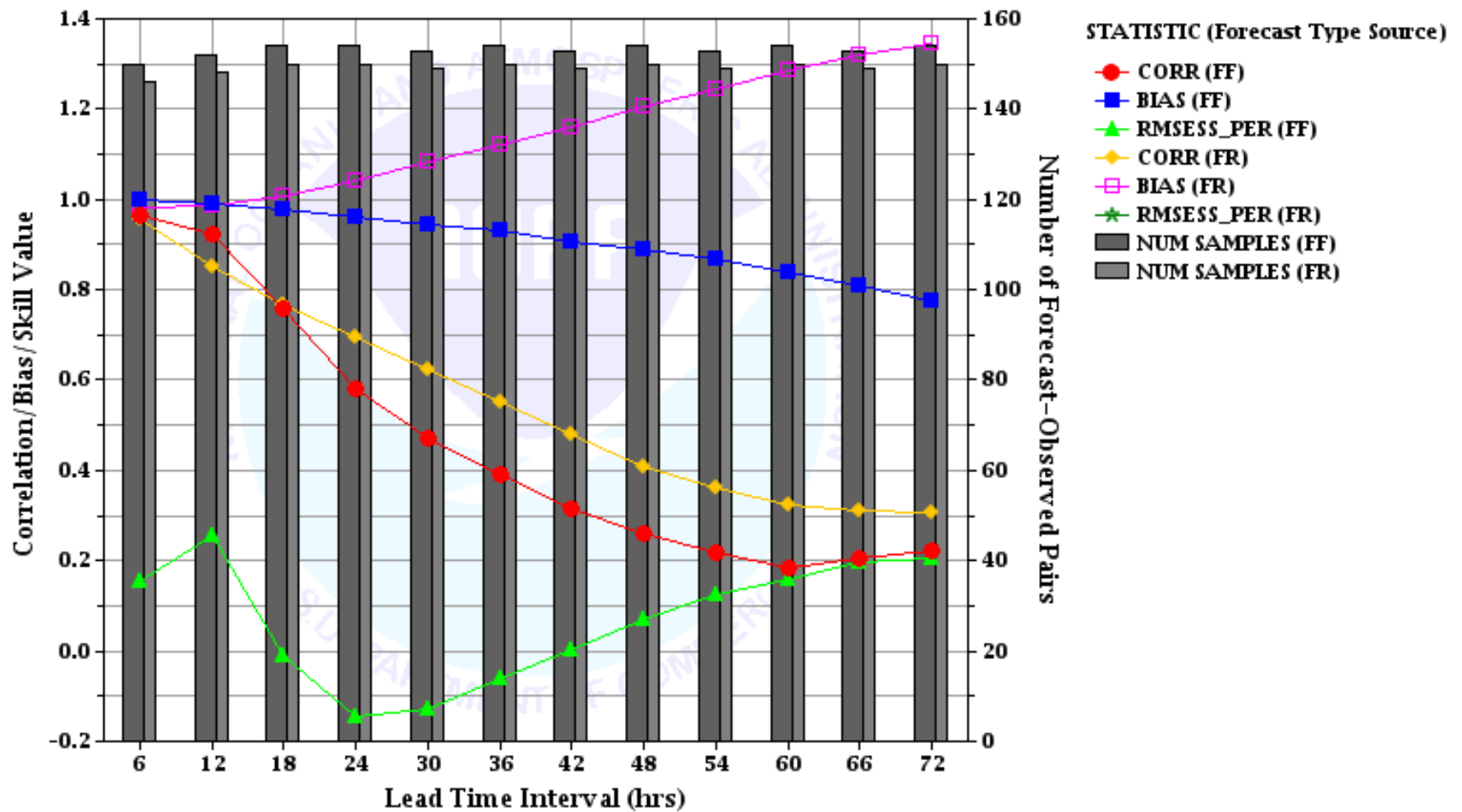
Lead times: 0 hours - 72 hours

Selected Location: Myakka Head 8 W [MKHF1(HGIFRZZ)]



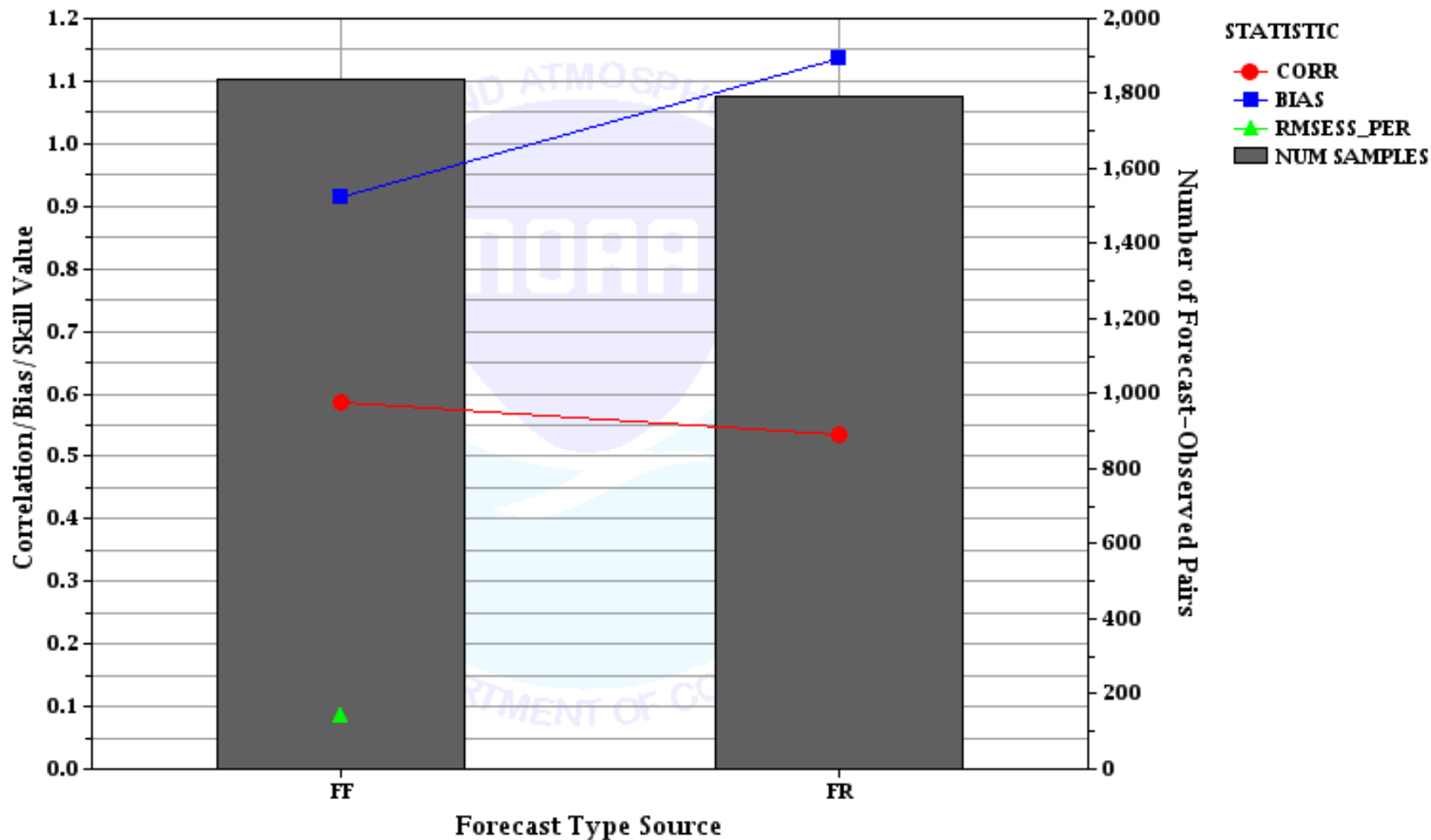


Plot of Instantaneous Height Correlation, Bias, and/or Skill against Leadtime Interval for SERFC  
 Compared Over Forecast Type Source  
 Time Period: 2005-01-01 00:00:00 GMT - 2008-10-01 00:00:00 GMT  
 Lead times: 0 hours - 72 hours  
 Locations: MKHF1





Plot of Instantaneous Height Correlation, Bias, and/or Skill against Forecast Type Source for SERFC  
Time Period: 2005-01-01 00:00:00 GMT - 2008-10-01 00:00:00 GMT  
Lead times: 0 hours - 72 hours  
Locations: MKHF1



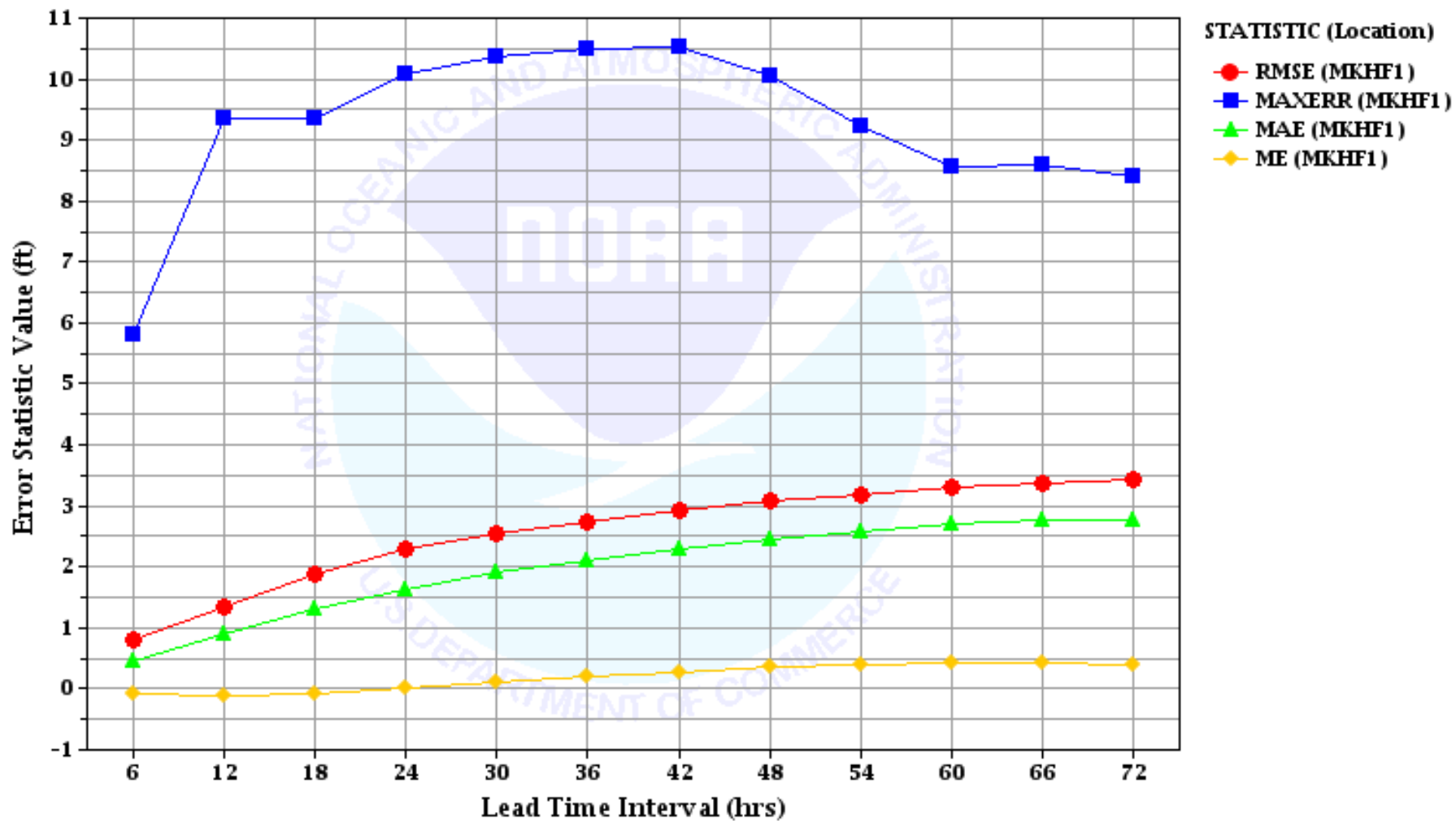
### Plot of Instantaneous Height Error Statistics against Leadtime Interval for SERFC

Compared Over Location

Time Period: 2005-01-01 00:00:00 GMT - 2008-10-01 00:00:00 GMT

Lead times: 0 hours - 72 hours

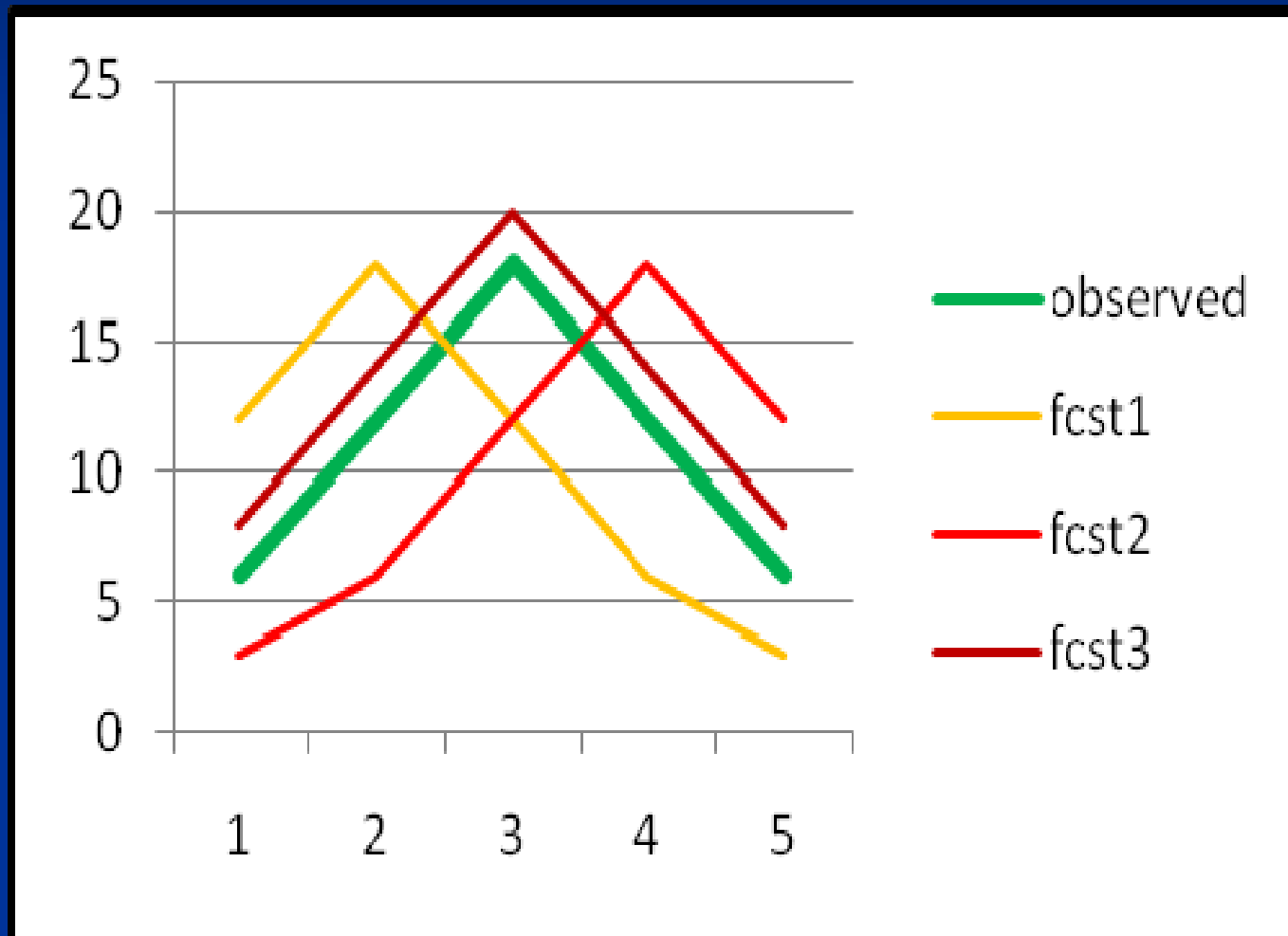
Locations: MKHF1



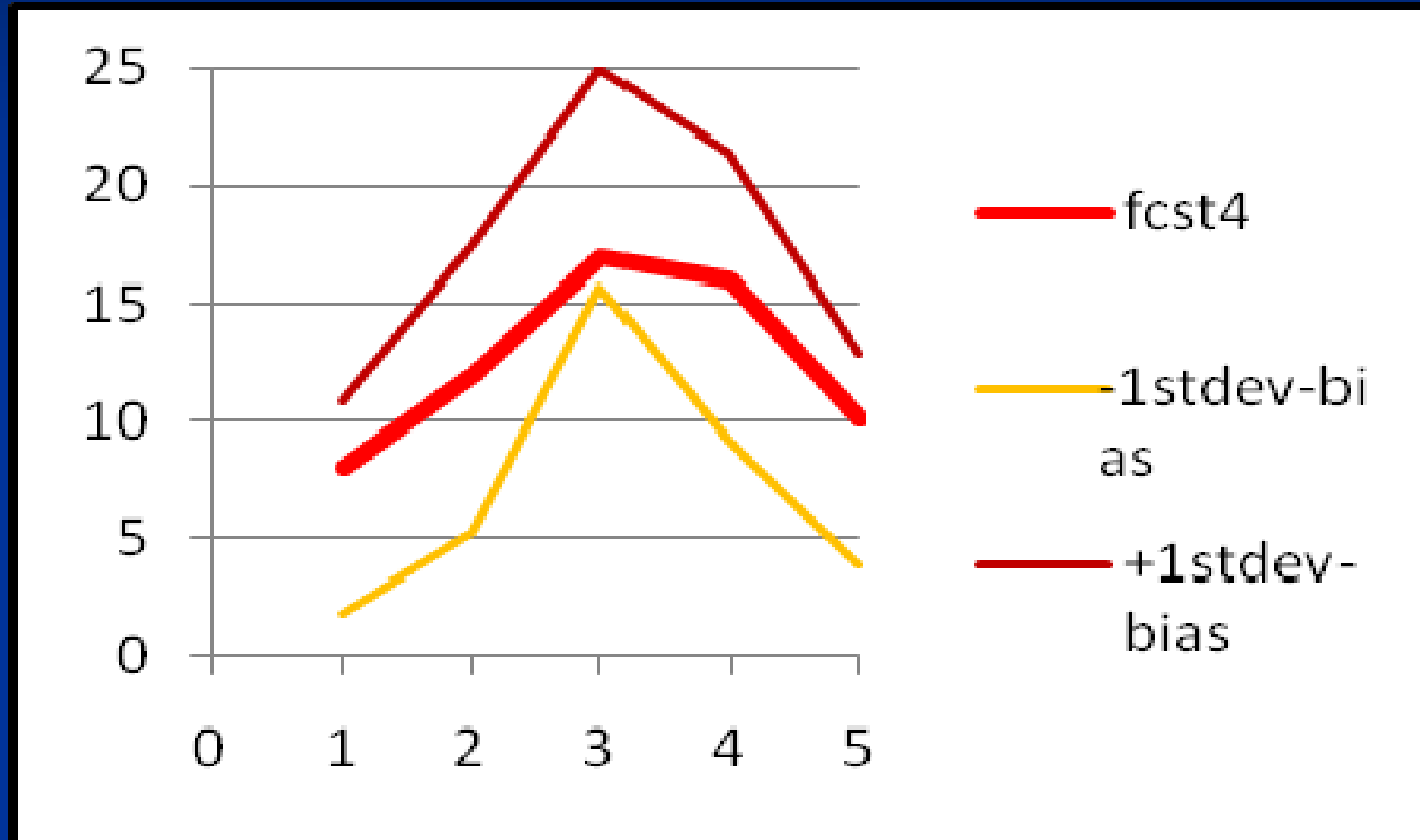
# New IVP

- Great for high-level summaries, etc.
- What about the local emergency manager?
- What about the hydrologist on the forecast desk?

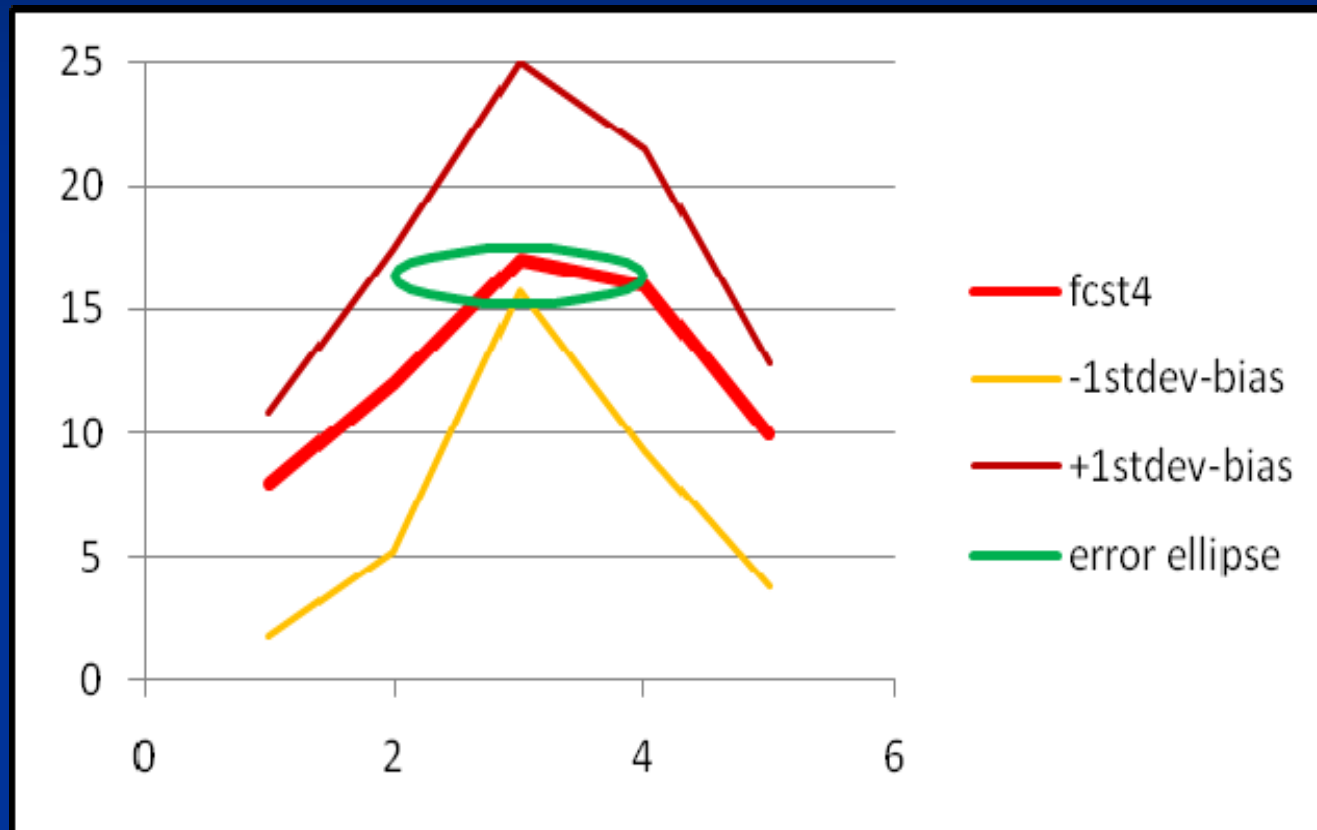
# How good are these forecasts?



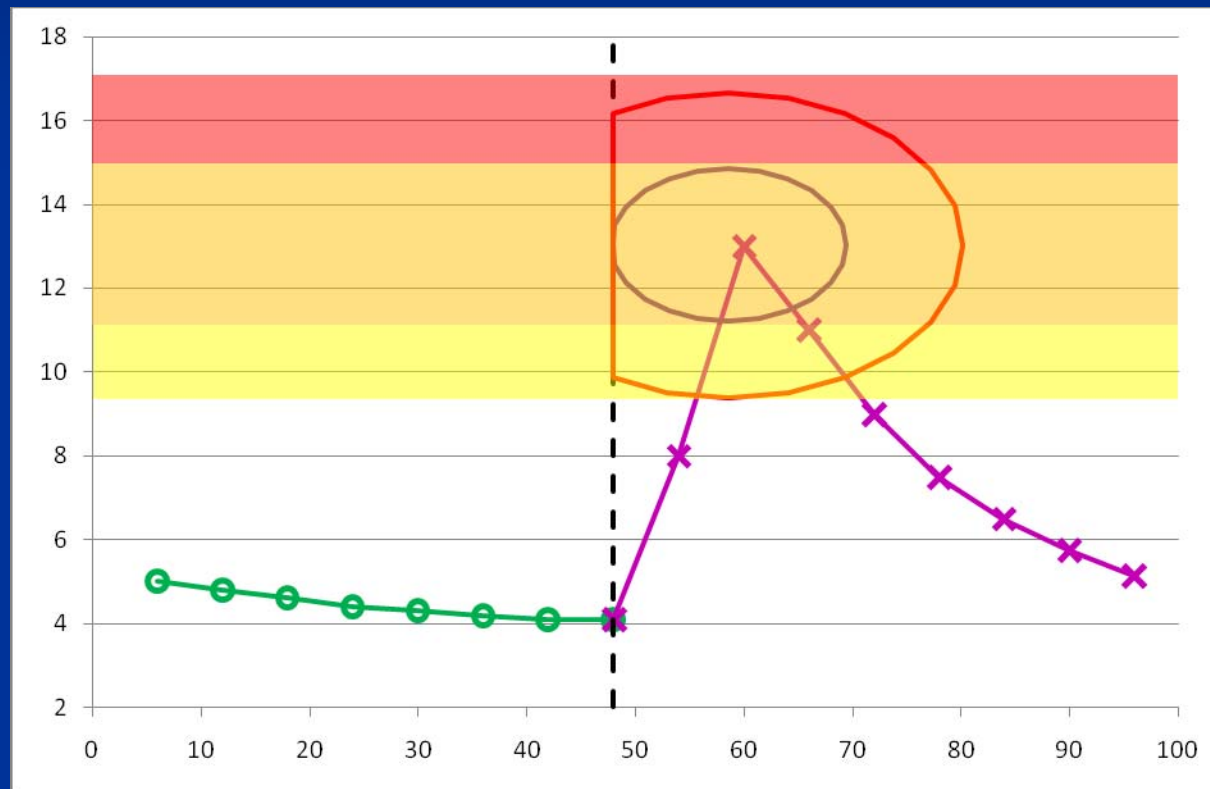
# How good are these forecasts?



# How good are these forecasts?



# Forecast error





Questions?